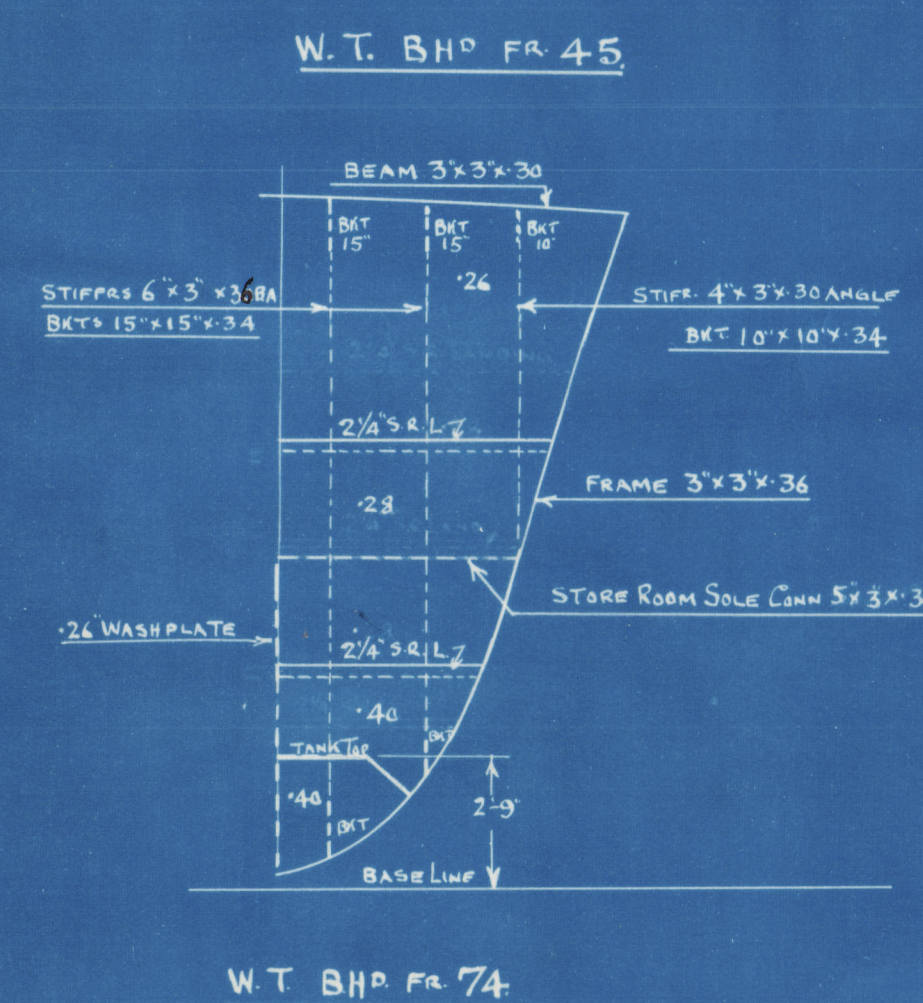
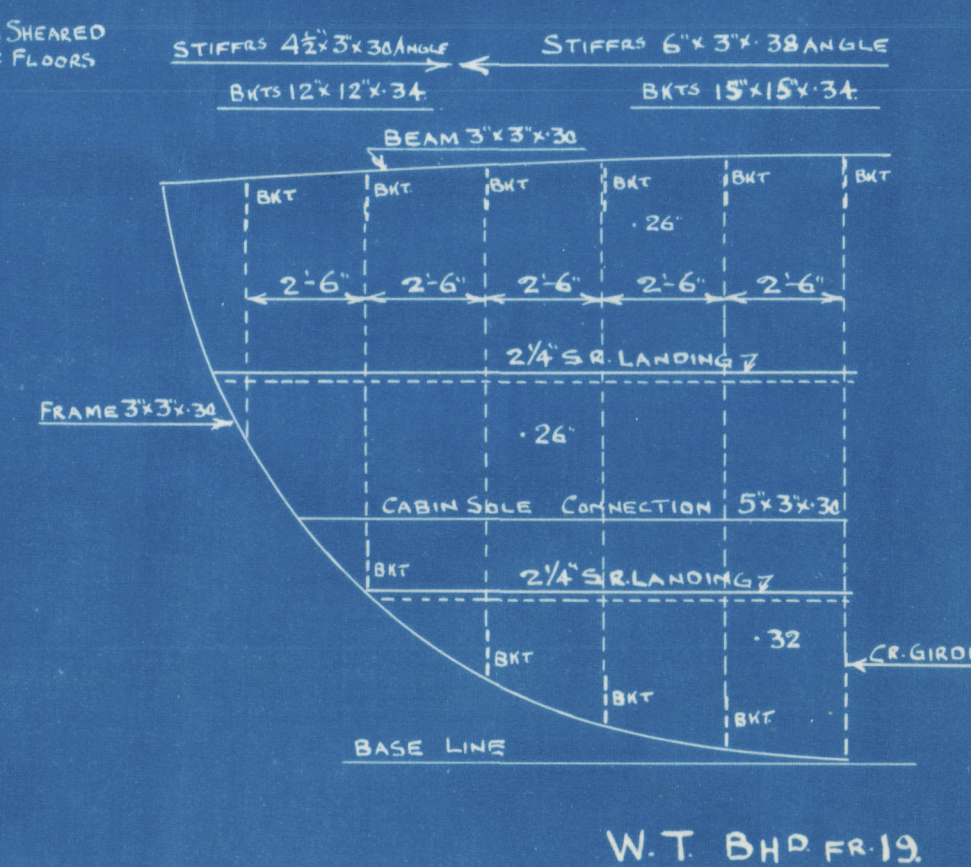
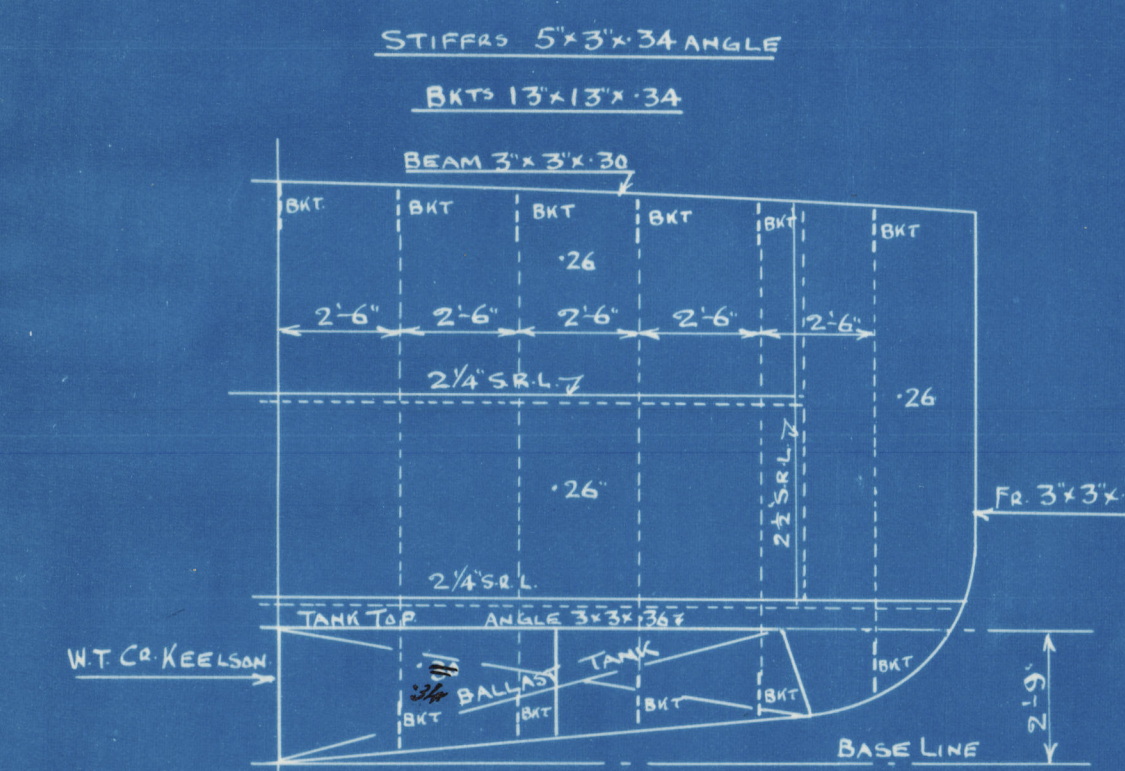
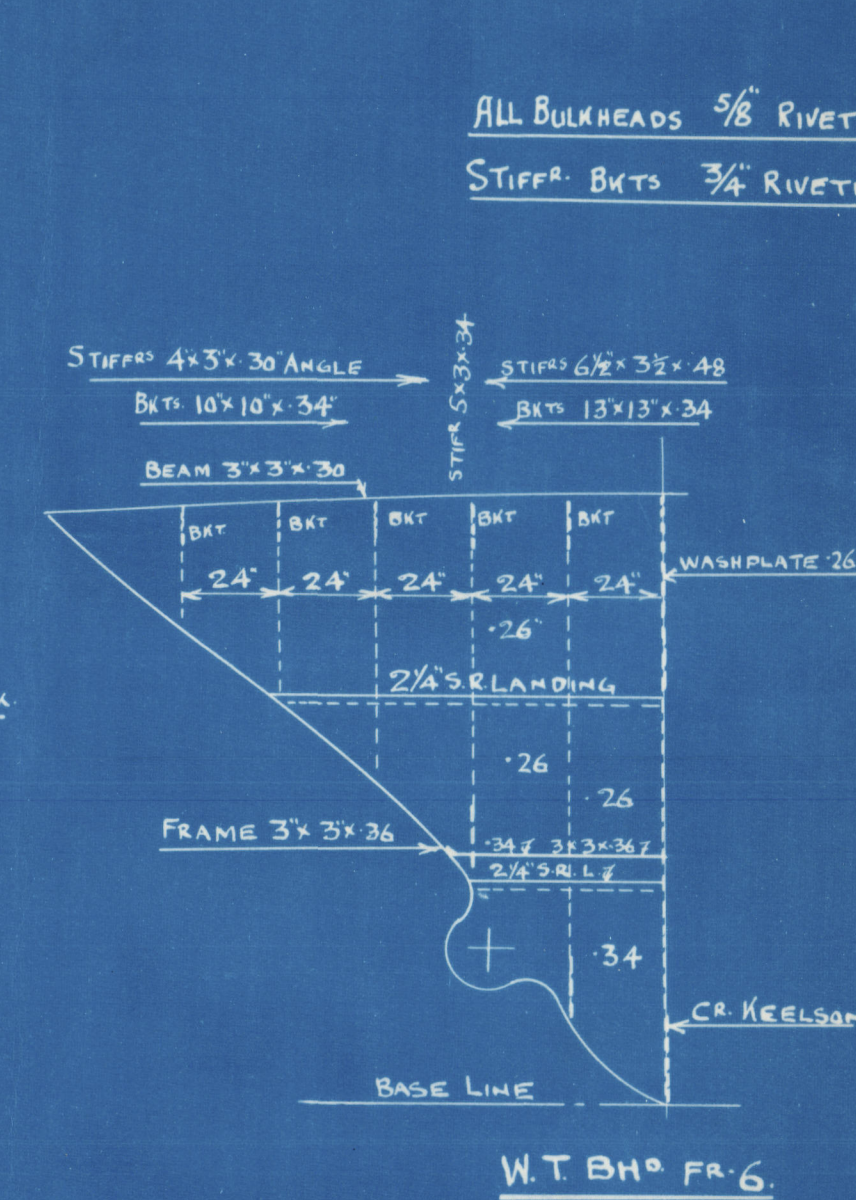


FERGUSON BROS.  
(PORT-GLASGOW) LTD  
SHIPBUILDERS & ENGINEERS



LLOYD'S CLASS A.1. WITH A FREEBOARD CORRESPONDING TO A  
MOULDED DRAFT OF 8'-6" "FOR COASTING SERVICE EAST AFRICA"

LIMITING PORTS  
MOBASA AT THE NORTH AND MIHANDANI AT THE SOUTH.

[illegible]

# T.S.S. "AZANIA".

## PROFILE & DECK PLAN.

SCALES.  $\frac{1}{8}" \& \frac{1}{4}" = 1 \text{ FOOT.}$

<u>DIMENSIONS.</u>	
<u>LENGTH</u>	150'-0"
<u>BREADTH</u>	29'-0"
<u>DEPTH</u>	11'-6"

YARD N° 277



Serguson Bros.  
(Partfledged) L<sup>rs</sup>.

T. S. S. JAZANIA

N<sup>o</sup> 277.

Profile & D<sup>r</sup>. plans  
as Built.

Grk. Rept. N<sup>o</sup>. 18505.

005141-005153-0243



© 2020

Lloyd's Register  
Foundation