

# Lloyd's Register of Shipping.

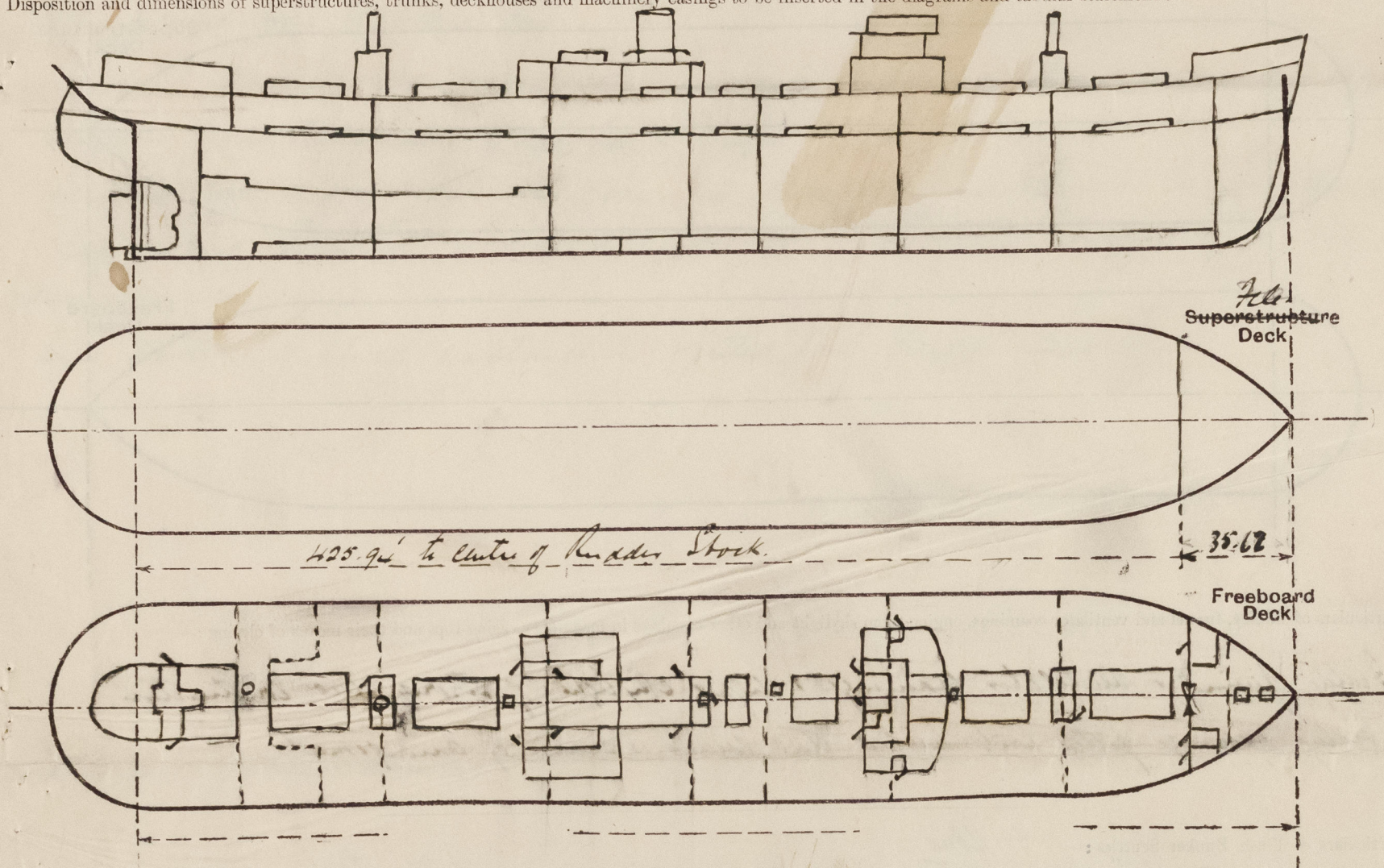
## SURVEYS FOR FREEBOARD.

(CONDITIONS OF ASSIGNMENT.)

23 FEB 1944

Ship's Name EMPIRE ABBEY ARDELLS Port of Survey NEWCASTLE-ON-TYNE  
 Official Number 169178 Surveyor's Signature [Signature]  
 Nationality and Port of Registry British Newcastle KONG Date of Survey During construction.

Disposition and dimensions of superstructures, trunks, deckhouses and machinery casings to be inserted in the diagrams and tabular statement:—



Particulars of Superstructures, Trunks, Casings, Deckhouses.

	Coaming	Plating	Stiffeners	Spacing	End Attachments of Stiffeners	Size of Openings	Height of Sills	Height of Casings
Poop Bulkhead ... ..								
Raised Quarter Deck Bulkhead ...								
Bridge, After Bulkhead ... ..								
Bridge, Forward Bulkhead ... ..								
Forecastle Bulkhead ... ..	30	30	4 x 3 x .82 L	30"	Reinforced to Boundary Ls.	{ 1-4 T.O. 4' x 1' 9" 1-7.0- 5' x 2' 2" 2-5.0. 5' x 2' 3" }	12" 9"	6'-9" ✓
Trunk, Aft ... ..								
Trunk, Forward ... ..								
Exposed Machinery Casings on Free- board or Raised Quarter Deck ...	35	30	2 1/2 x 3 x .80 L	31"	Both @ Top	(185) 4' 9" x 2' 3"	22"	7'-9 1/4"
Exposed Machinery Casings on Super- structure Decks ... ..								
Machinery Casings within Superstruc- tures not fitted with Class I Closing Appliances ... ..	34	30	5 x 3 x .38 with 465 P.S.	34"	} Both T.O.	20' 6" x 22"	24"	4'-6"
Deckhouses on Flush Deck Ships	25	25	5 x 3 x .38	36"		10' 5" x 4'		
	25	25	5 x 3 x .30	30"				

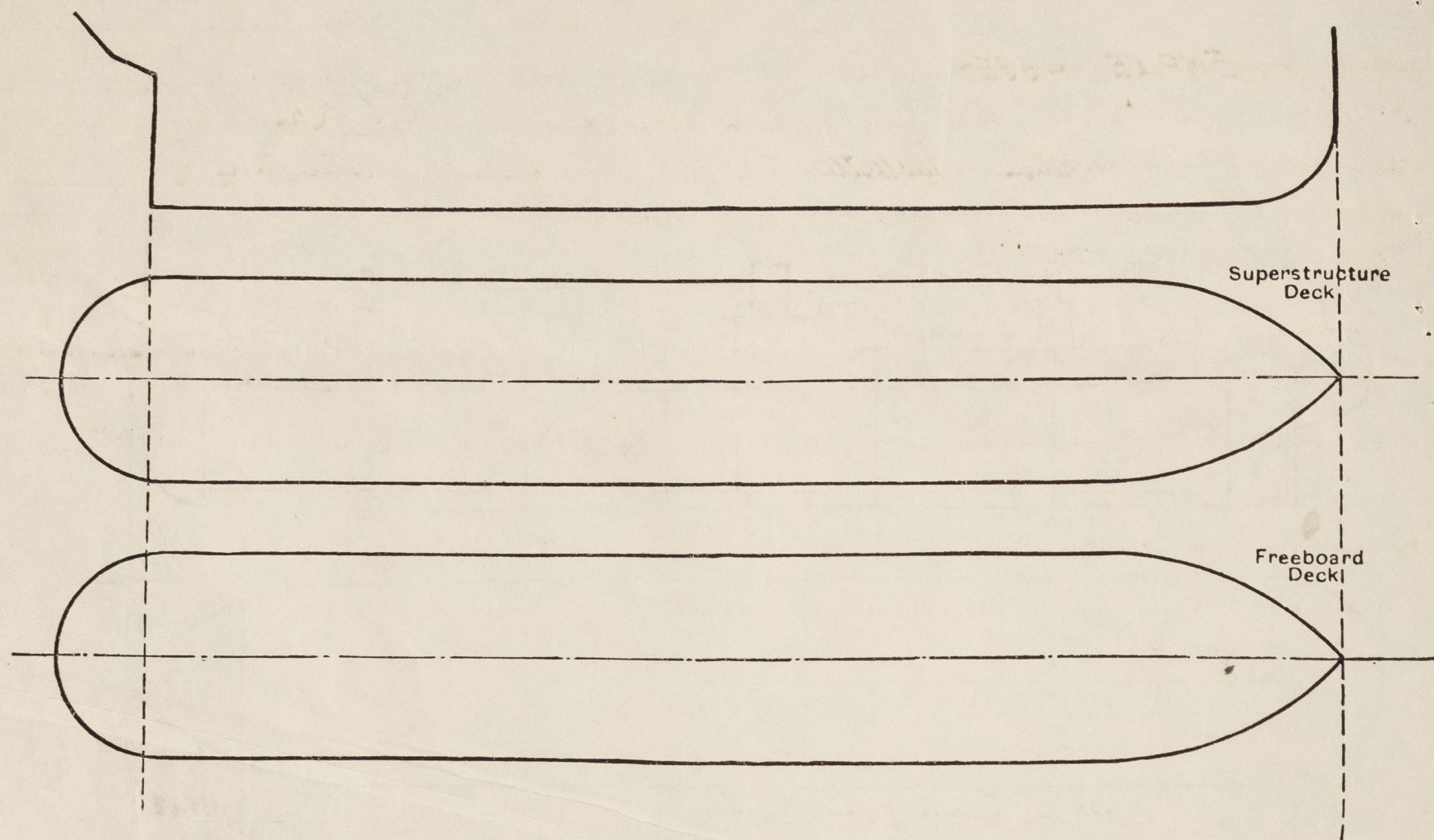
Particulars of Closing Appliances (state if capable of being manipulated from both sides).

Poop Bulkhead ...	
Raised Quarter Deck Bulkhead ...	
Bridge, After Bulkhead ...	
Bridge, Forward Bulkhead ...	
Forecastle Bulkhead ...	1-4 T.O. closed by turnbuckles, operated both sides. 1 Port side also closed by lock bolts spaced about 12" apart. 2-4 Blue doors operated both sides.
Exposed Machinery Casings on Freeboard or Raised Quarter Deck ...	
Exposed Machinery Casings on Superstructure Decks ...	
Machinery Casings within Superstructures not fitted with Class I Closing Appliances ...	
Deckhouses on Flush Deck Ships ...	2 H.S. W.M. doors & 1 H. Blue door in halves vertically, operable both sides.



# PARTICULARS OF PROTECTION TO OPENINGS, ETC.

The following diagrams should be used to indicate the positions of cargo and coaling hatchways, gangway, cargo and coaling ports, ventilators, companionways, etc., which would affect the seaworthiness of the ship:—



Particulars of fiddle, funnel and ventilator coamings, engine room skylight and other openings in machinery casing tops and their means of closing:—

Fiddle, funnel & ventilator coamings & engine skylight of strong steel construction.  
Fiddle openings fitted with hinged steel covers securing arrangements.

Particulars of Flush Bunker Scuttles:—

None.

Particulars of Companionways:—

Access to No. 1 Hatch in forward main house with hinged steel door 4'6" x 14'6". Side 30" x 4'6".  
Access to No. 2 Hatch through 2'2" x 2' hatch at aft end of No. 1 Hatch coaming 4' x 10' with hinged steel door secured by turnbuckles. Access to No. 3 Hatch through 2'2" x 2' hatch between No. 3 & No. 4 hatchways with hinged steel door secured by turnbuckles. Coaming 22' x 40'—Access to No. 4 Hatch in fore part of Main House through 1'5" x 1'5" door 3'6" x 14'. Side 24" x 4'6". Access to No. 5 Hatch through hatch at fore end of No. 5 Hatchway. Coaming 4' x 10' with 14' steel door secured by turnbuckles. Access to crew up to No. 5 Hatch house. 1'5" door Side 21". Doors open also both sides. Escape from crew up through 24" dia. Access to pattern scuttles No. 1 coaming 6' high—Access to lower space through Calson House scull (1'5") No. 1 Hatch door secured by turnbuckles. Side 24".

Particulars of Ventilators in exposed positions on freeboard and superstructure decks:—

Unit coamings on side & freeboard deck forward 2' x 36" high remainder 36" high.  
or Mast House tops 27" high, or casing top 21" high.

Coamings constructed of Rule scantlings & 4 Rule reinforcement, closed by wood plating & canvas covers.

Particulars of Air Pipes in exposed positions on freeboard, raised quarter, or superstructure decks:—

All air pipes on freeboard deck 36" in height, closed by canvas covers or with gauge screw at mouth.

Particulars of Gangway Cargo and Coaling Ports:—

None.

EMPIRE ABBEY

Particulars of Scuppers and Sanitary Discharge Pipes:—

Discharges from W.C. in crew space aft led to storm valves in Tween decks with storm valve at Pan.  
Discharges from wash basins & sink led to double storm valves in Tween decks, both accessible.  
Discharges from showers & scuppers in Tween decks aft led to second storm valve below 2<sup>nd</sup> deck operated from foreboard deck.  
Scuppers & discharges from spaces above foreboard deck led to storm valves in Tween decks.  
Scuppers from Tween deck spaces led to bulges.  
Scuppers from refrigerating machinery room led through engine room to bulges & fitted with self closing cocks.

Particulars of Side Scuttles:—

Side scuttles of strong construction fitted with hinged steel lights.

Vertical distance of Sill of lowest Side Scuttle above top of keel

3'4" 6" approx.

Particulars of Guard Rails:—

Steel bulwarks in way of midship accommodation  
Remainder clear of side on side. Open rails 3'6" in height, 3 rods in height—  
Stanchions about 4'6" apart.

Particulars of Gangways, Lifelines, etc.:—

Lifelines fitted forward & aft of midship deck houses.

## Particulars of Freeing Arrangements.

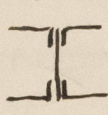
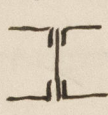
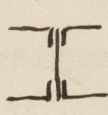
	Length of Bulwark	Height of Bulwark	Size of Freeing Ports	Number each side	Area each side	Rule area each side
After Well ... ..						
Forward Well ... ..						
State position of each freeing port ... .. { After Well:— (F. and A. position and height above deck edge) { Forward Well:—						
State whether the freeing ports are fitted with shutters, bars, or rails, and give particulars of such:—						
Additional area where sheer is less than standard.						



# PARTICULARS OF PROTECTION TO OPENINGS, ETC.

*Freeboard deck*

*Casing top.*

HATCHWAYS ON FREEBOARD AND SUPERSTRUCTURE DECKS.									
Description of Hatchway	No. 1	No. 2, 3, 5, 6	No. 4	Local Hatch	Freeboard Hatch	Chain Hatch	Local Hatch		
Dimensions of Hatchway	31'6" x 20'	31' x 20'	12'11" x 20'	15' x 5'	4' x 3'	2' x 2'6"	5'2" x 20'		
COAMINGS	Height above Deck	30"	30"	30"	30"	9"1/2"	9"1/2"	9"1/2"	
	Thickness	45"	45"	45"	45"	40"	40"	40"	
	Stiffeners	7 x 3 x 40	8 x 3 x 45	7 x 3 x 40	7 x 3 x 38	-	-	-	
	Brackets, Stays	3	3	1	1	-	-	-	
HATCH BEAMS	Number	5	5	6					
	Spacing	5'3"	5'2"	6'5"					
	Scantling and Sketch								
	Bearing Surface	3 1/2	3 1/2	3 1/2					
FORE AND AFTERS	Number								
	Spacing								
	Unsupported Lengths								
	Scantling and Sketch								
HATCH COVERS	Material	SP.	SP.	SP.	SP.	SP.	SP.	SP.	
	Thickness	2 1/2"	2 1/2"	2 1/2"	2 1/2"	2 1/2"	2 1/2"	2 1/2"	
	How fitted	FOR.	FOR.	FOR.	FOR.	FOR.	FOR.	FOR.	
	Bearing Surface	3	3	3	3	2 1/2	2 1/2	2 1/2	
Spacing of Cleats	24"	24"	24"	24"	24"	18"	24"		
Number of Tarpaulins	2	2	2	2	1	1	2		
<p>*Are wood fore and afters steel shod at all bearing surfaces? <i>Yes</i></p> <p>Are battens and wedges efficient and in good condition? <i>Yes</i></p> <p>Are tarpaulins in good condition and in accordance with rule requirements? <i>Yes</i></p> <p>Are lashings provided in accordance with rule requirements? <i>Yes</i></p>									

Particulars of any special features:—

*The scantlings of this vessel have been approved for an extreme draught of 26'9"*

*Deeper Loading: Allowed.*

*1. Efficient locking bars are fitted to the fore hatchway on the freeboard deck.*

*2. Inland deck bulkheads are either intact or fitted with hinged steel w.Y. doors.*

Endorsement at first survey and at surveys for renewal of Certificate:—

The fittings and appliances are in accordance with the particulars shown on this form (or as now modified) and are in good condition.



© 2020

Lloyd's Register Foundation