



# S. S. TEVIOT.

## OIL FUEL DEEP TANK.

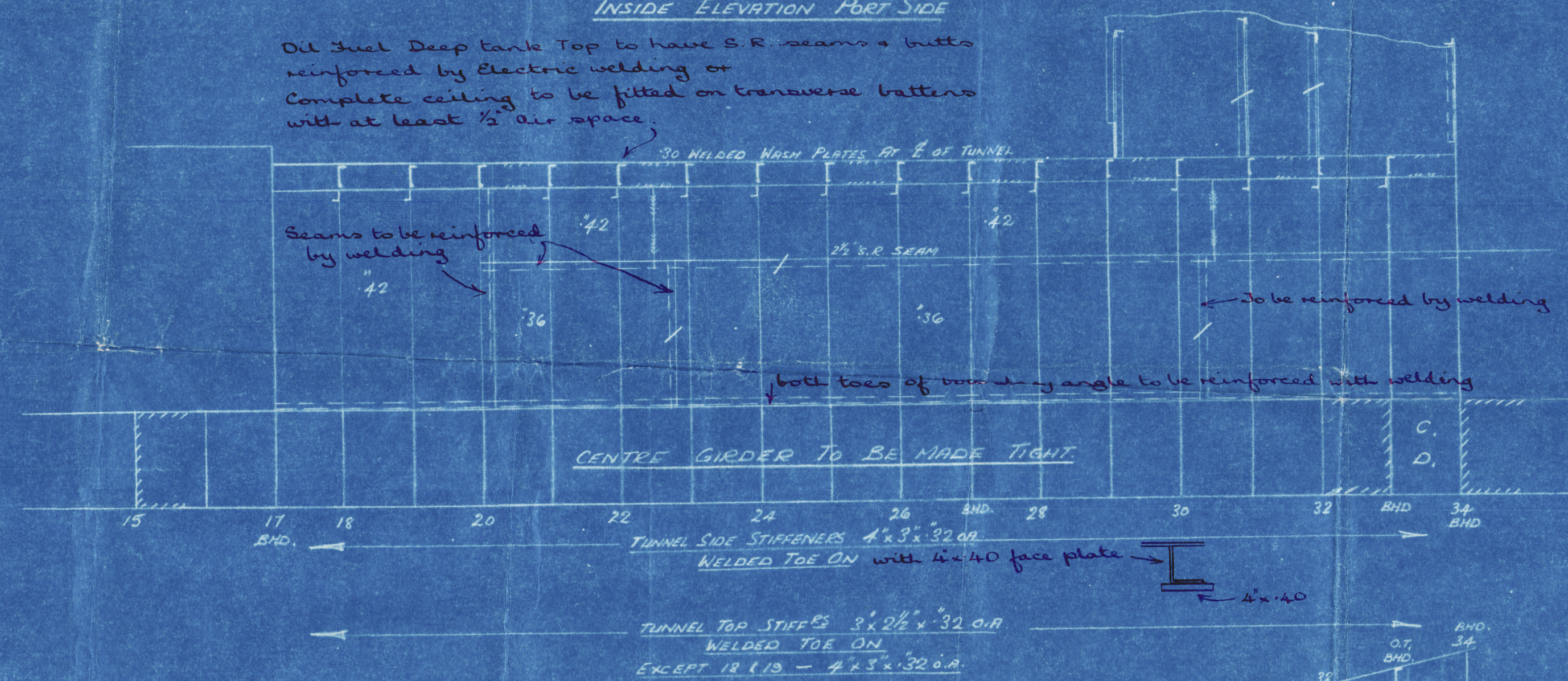
SCALES:  $\sim \frac{1}{4}'' = 1 \text{ FOOT}$  & AS SHOWN.



### SHAFT TUNNEL.

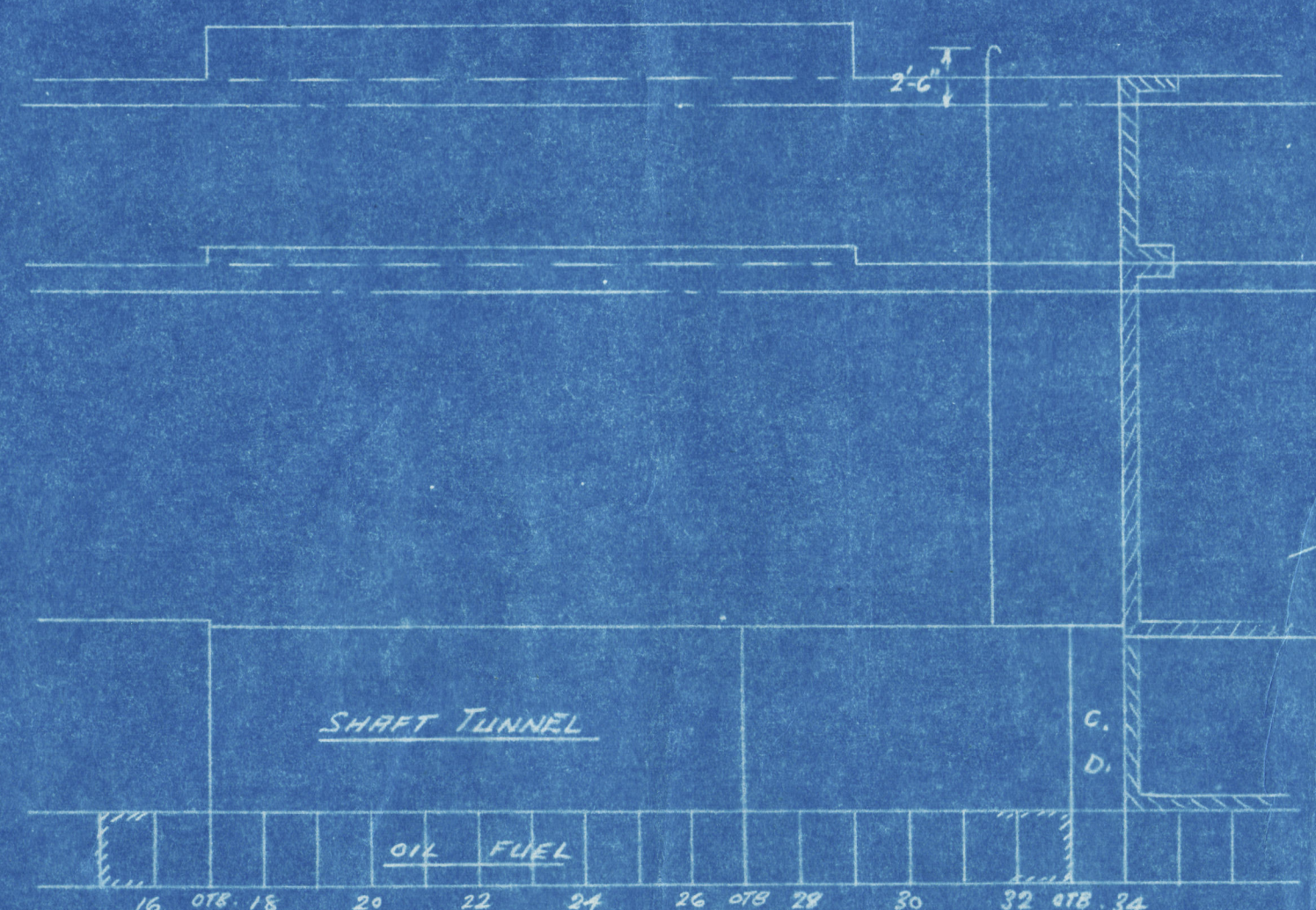
INSIDE ELEVATION PORT SIDE

Oil fuel Deep tank Top to have S.R. seams & butto reinforced by Electric welding or Complete ceiling to be fitted on transverse batten with at least  $\frac{1}{2}$  air space.



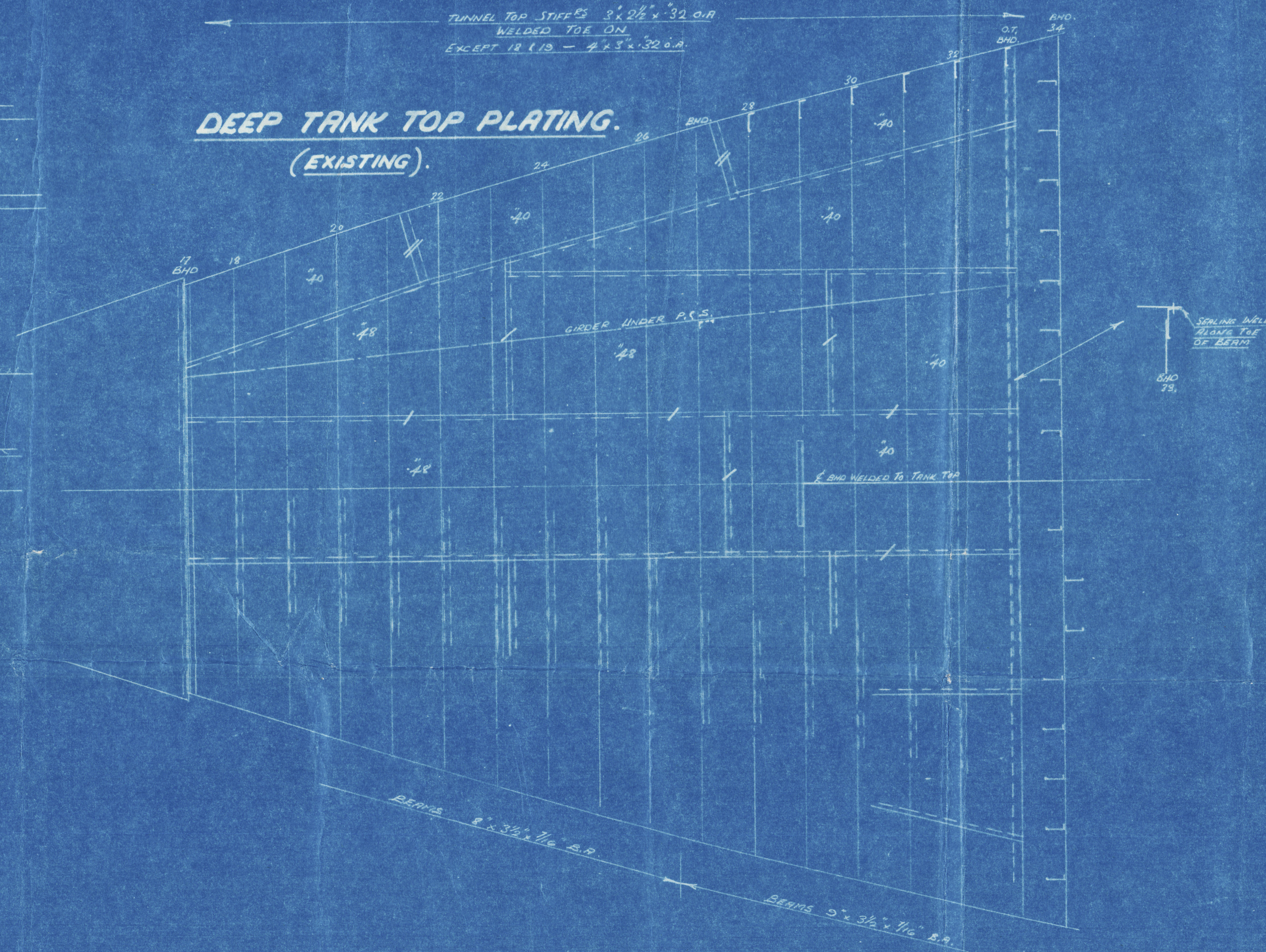
### KEY PLAN

SCALE:  $\sim \frac{1}{8}'' = 1'-0''$



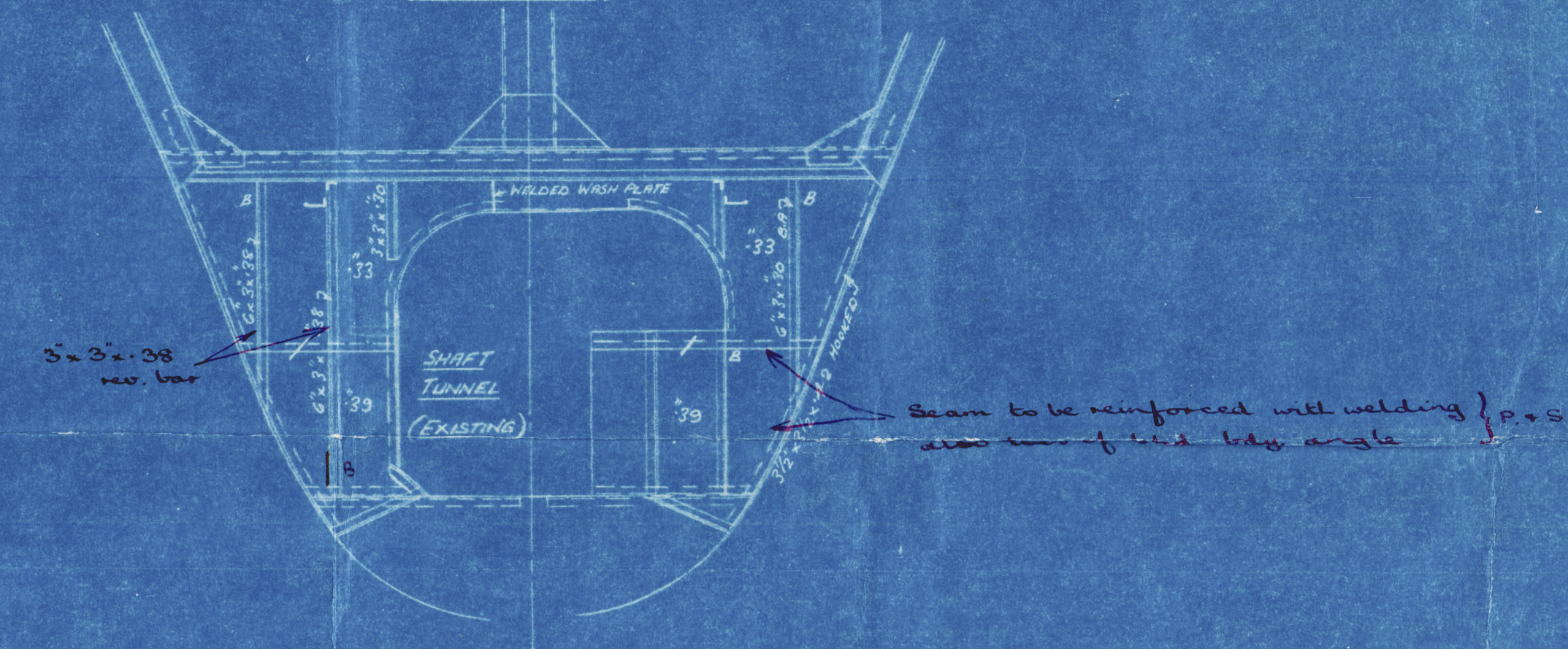
### DEEP TANK TOP PLATING.

(EXISTING).



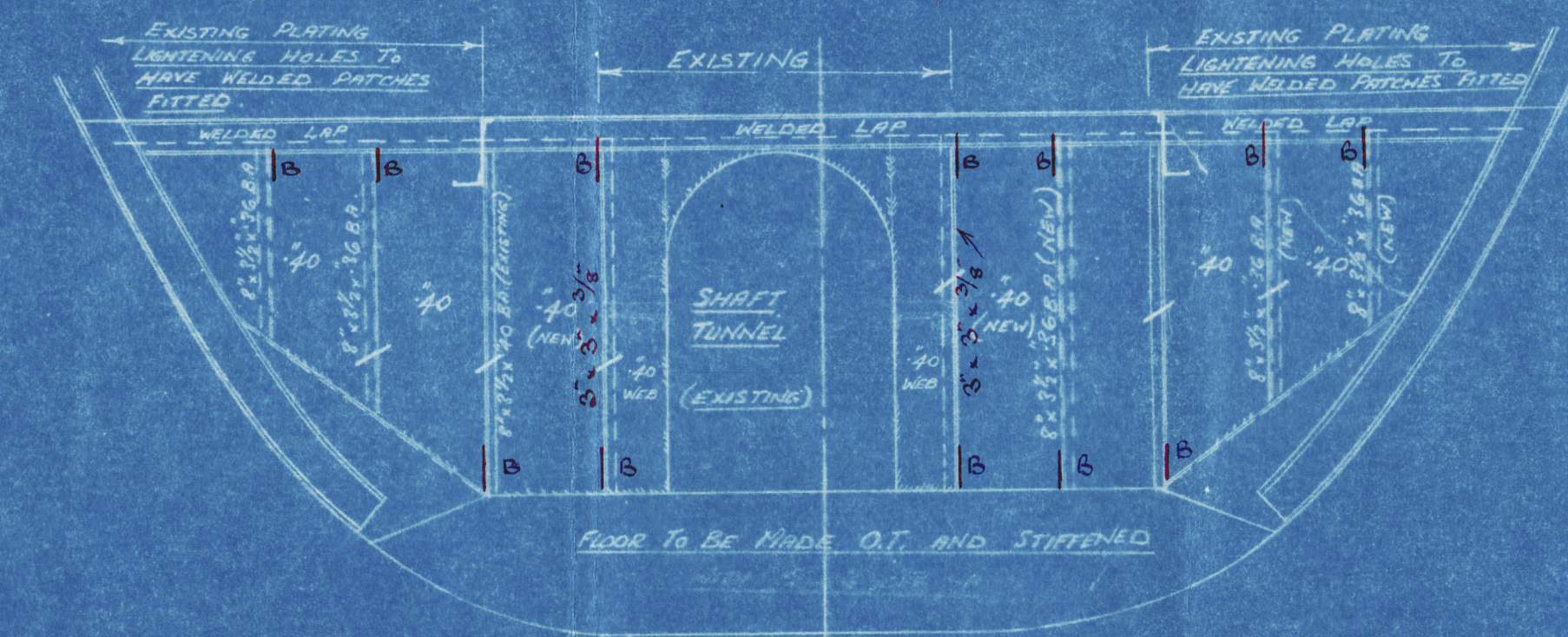
### BULKHEAD 17.

LOOKING AFT  
(EXISTING).



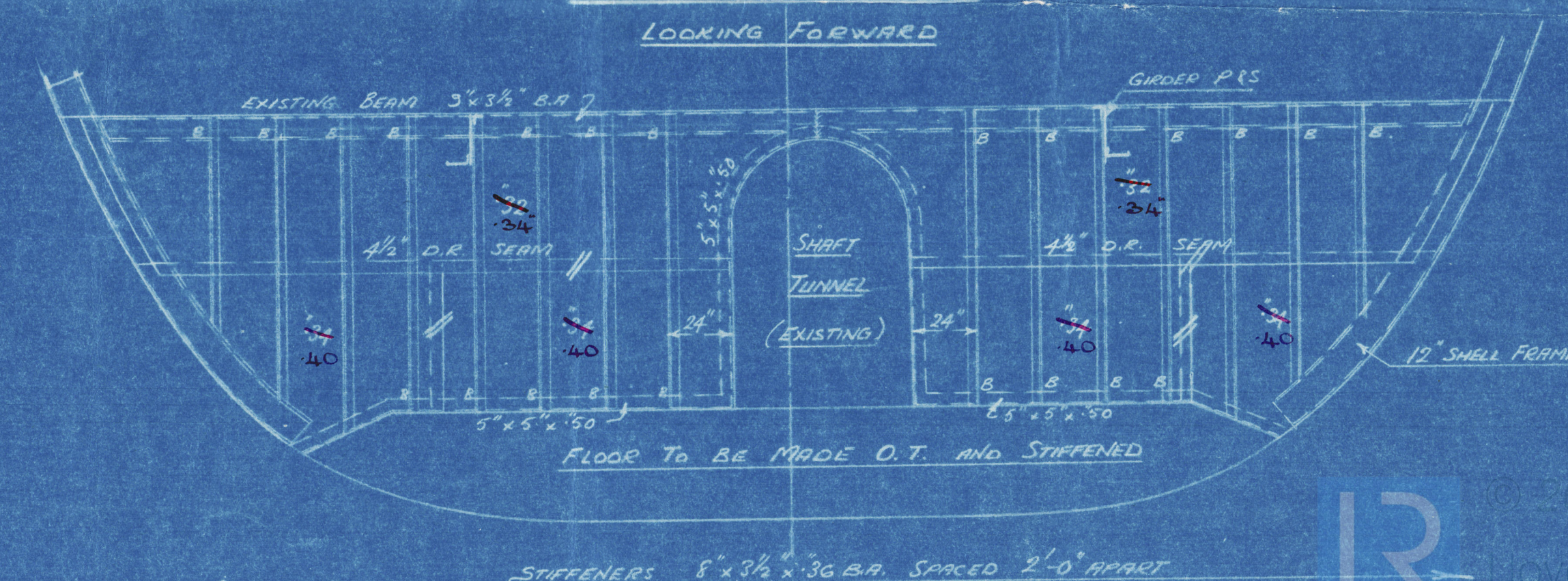
### BULKHEAD 27

LOOKING AFT.



### BULKHEAD 33

LOOKING FORWARD



4.7.47



LONDON

N/N 'TUNG AN' \*

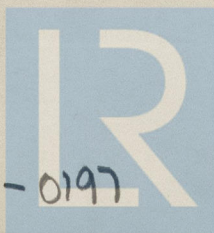
M/V 'TEVIOT'

OIL FUEL DEEP

TANK

NEWCASTLE-ON-TYNE, No. 105176.

005141-005153-0197



© 2020

Lloyd's Register  
Foundation