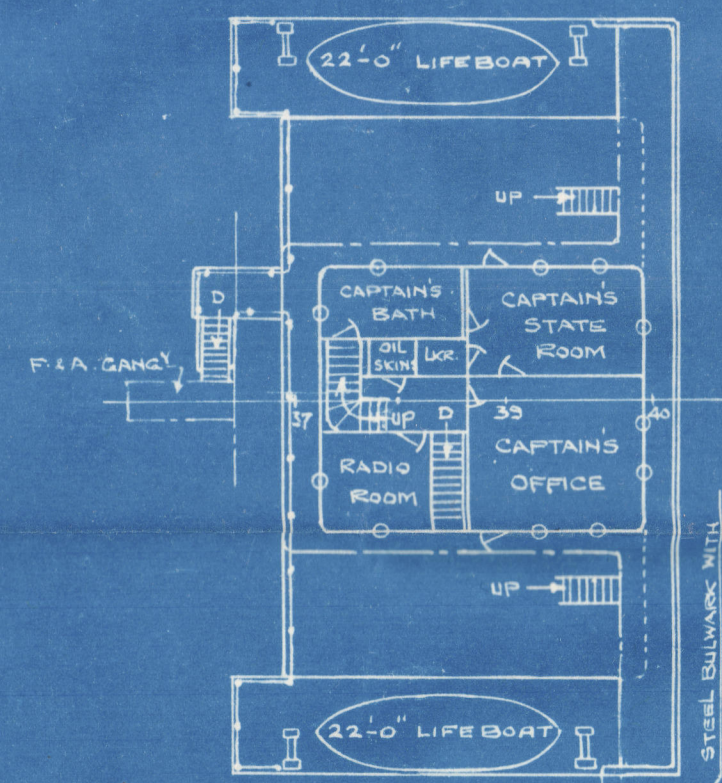
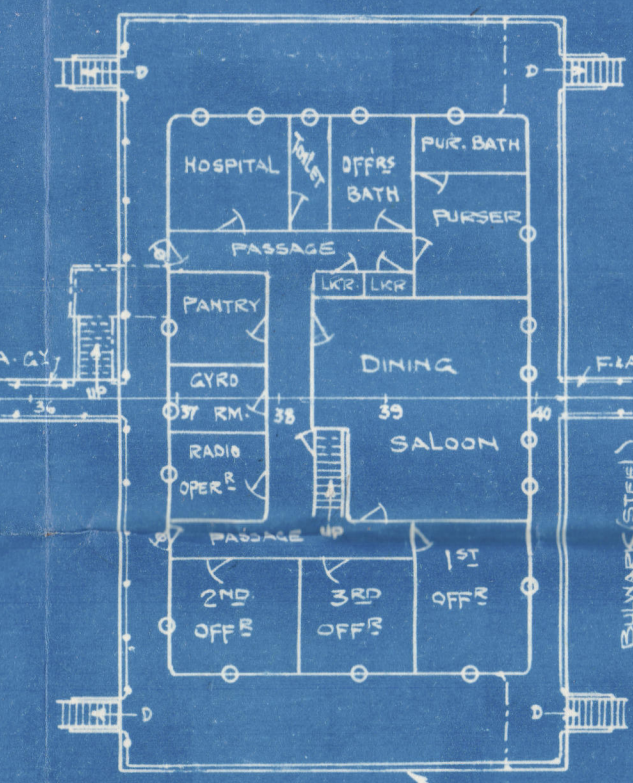


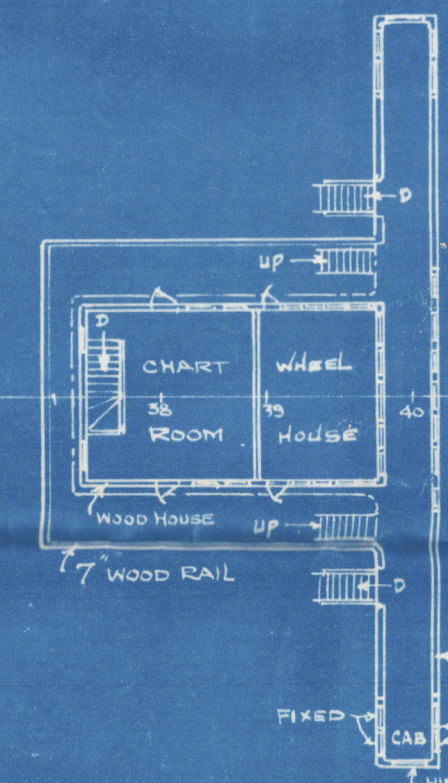
CASING TOP & HOUSE TOP



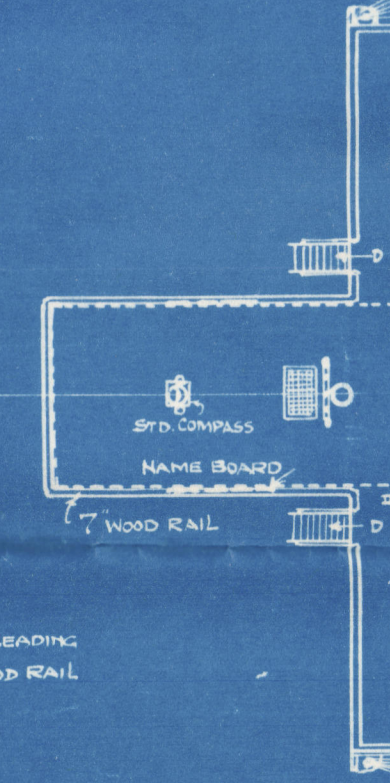
UPPER BRIDGE



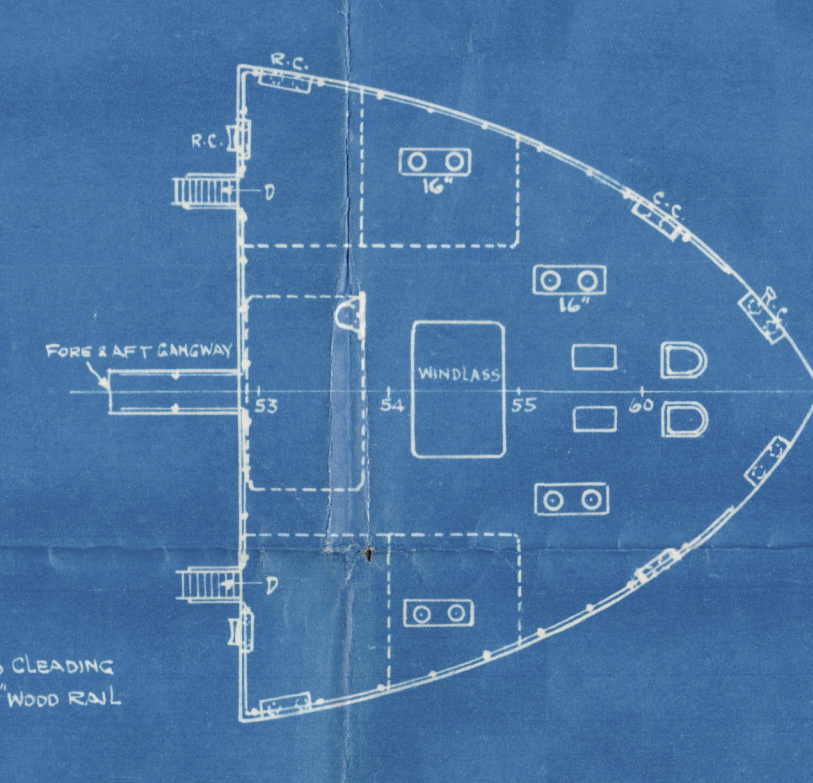
BRIDGE DECK



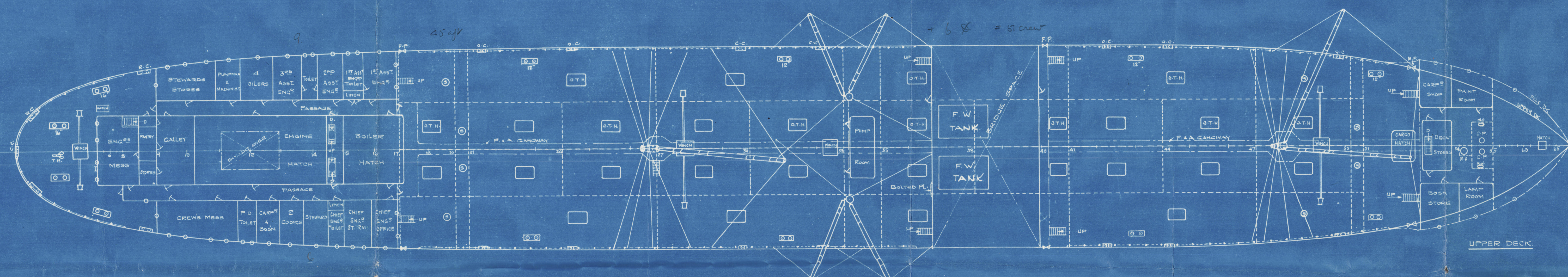
NAVIGATING BRIDGE



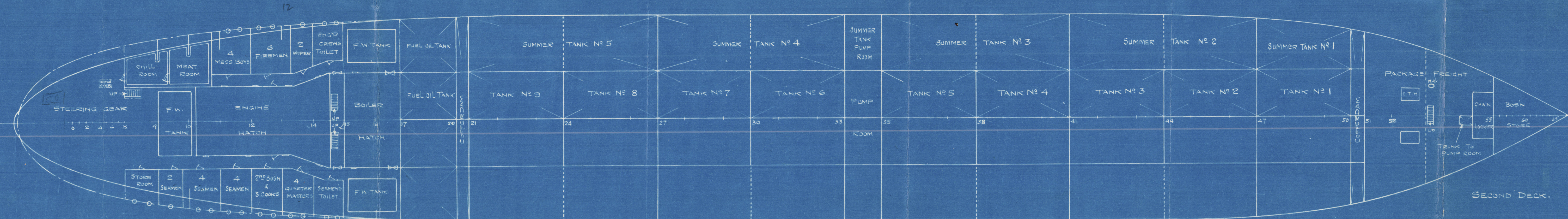
FLYING BRIDGE



FORE-CASTLE DECK



UPPER DECK



SECOND DECK

ALTERATIONS		
NO.	DATE	DESCRIPTION
1	3-13-33	INNER BOTTOM TANKS INDICATED
2		LIFE BOATS AT MIDSHIPS RELOCATED
3	4-23-33	WHEEL HOUSE CHANGED, REVISED TO DATE
4	11-16-33	INNER BOTTOM TANKS CORRECTED, (ART. 100 CORR. P. 100)

PRINCIPAL DIMENSIONS.

LENGTH BET. PERP'S.	480'-9"
BREADTH MOLDED.	65'-9"
DEPTH MOLDED.	37'-0"

CHARGE

ACTION

PLAN PRINTS

NO.	DEPT.	NO.	DEPT.	NO.	DEPT.	NO.	DEPT.	NO.	DEPT.
1	1	2	1	3	1	4	1	5	1
6	1	7	1	8	1	9	1	10	1
11	1	12	1	13	1	14	1	15	1
16	1	17	1	18	1	19	1	20	1
21	1	22	1	23	1	24	1	25	1
26	1	27	1	28	1	29	1	30	1
31	1	32	1	33	1	34	1	35	1
36	1	37	1	38	1	39	1	40	1
41	1	42	1	43	1	44	1	45	1
46	1	47	1	48	1	49	1	50	1
51	1	52	1	53	1	54	1	55	1
56	1	57	1	58	1	59	1	60	1
61	1	62	1	63	1	64	1	65	1

HULL DIVISION

GENERAL ARRANGEMENT.

SCALE - ARRANGEMENT	1" = 10'
SCALE - DETAIL	1" = 1'
DATE	JAN 10 1930
BY	W. H. H. H.
CHECKED	W. H. H. H.

SUN SHIPBUILDING & DRYDOCK CO.
CHESTER, PA., U. S. A.

DR. NO. 128-700 A-A.

General Arrangb (Profile)
Sun 23+0000cos Aull 128
SS. 'COMET'
Ihl Rpt. n° 6236

now: Brigit Maersk.

now BRIGITTE.

N/N

" TRANSPETROL "

2/2/86.

RETAIN



© 2021

Lloyd's Register
Foundation

005098-005106-0053