

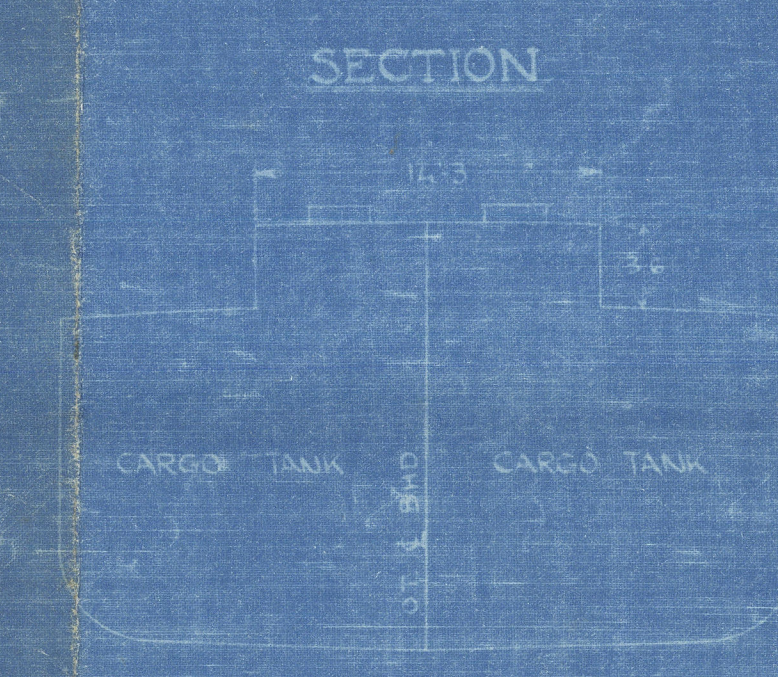
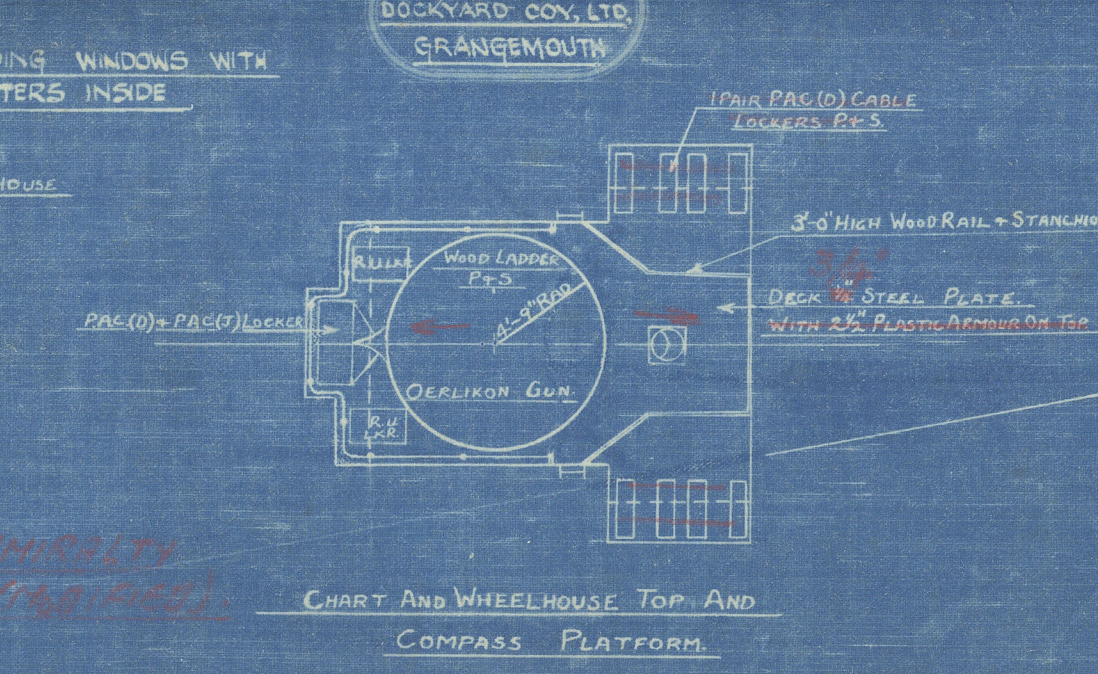
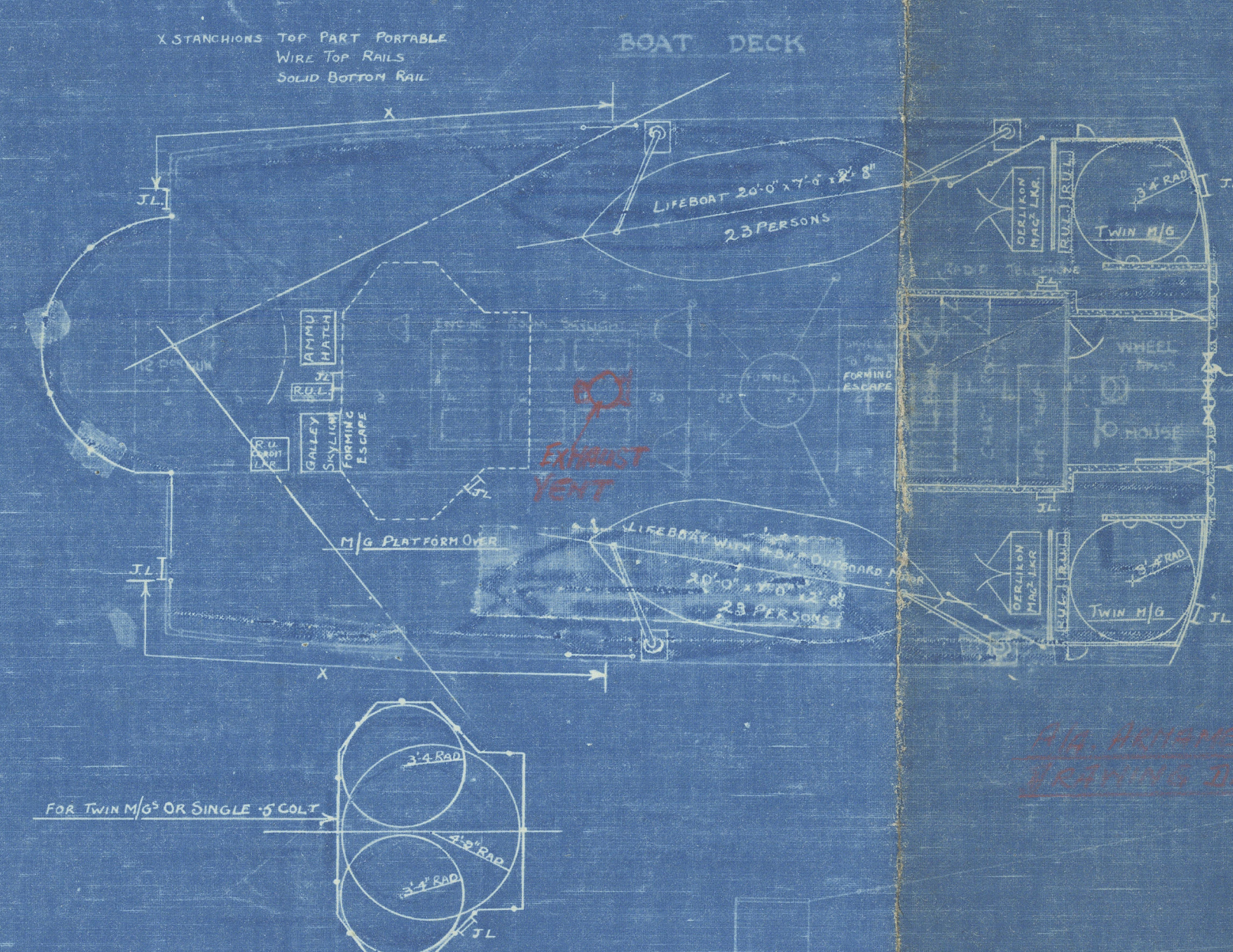
ARRANGED MODIFIED AFT PORT
 441-439 S.S. N° 441.
 A/MS 406.

GENERAL ARRANGEMENT.

DIMENSIONS: 190'0" BP x 30'6" ML x 14'0" MD

SCALE: 1/8" = 1 FOOT

THE GRANGEMOUTH DOCKYARD COY. LTD. GRANGEMOUTH



APPROXIMATE CAPACITIES

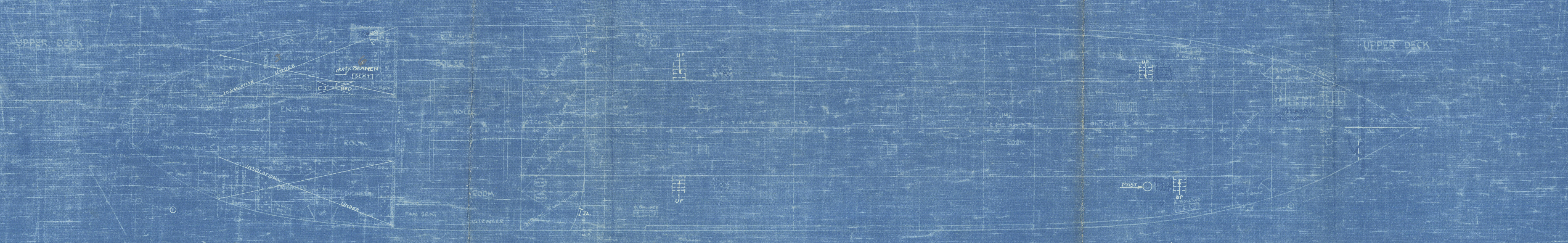
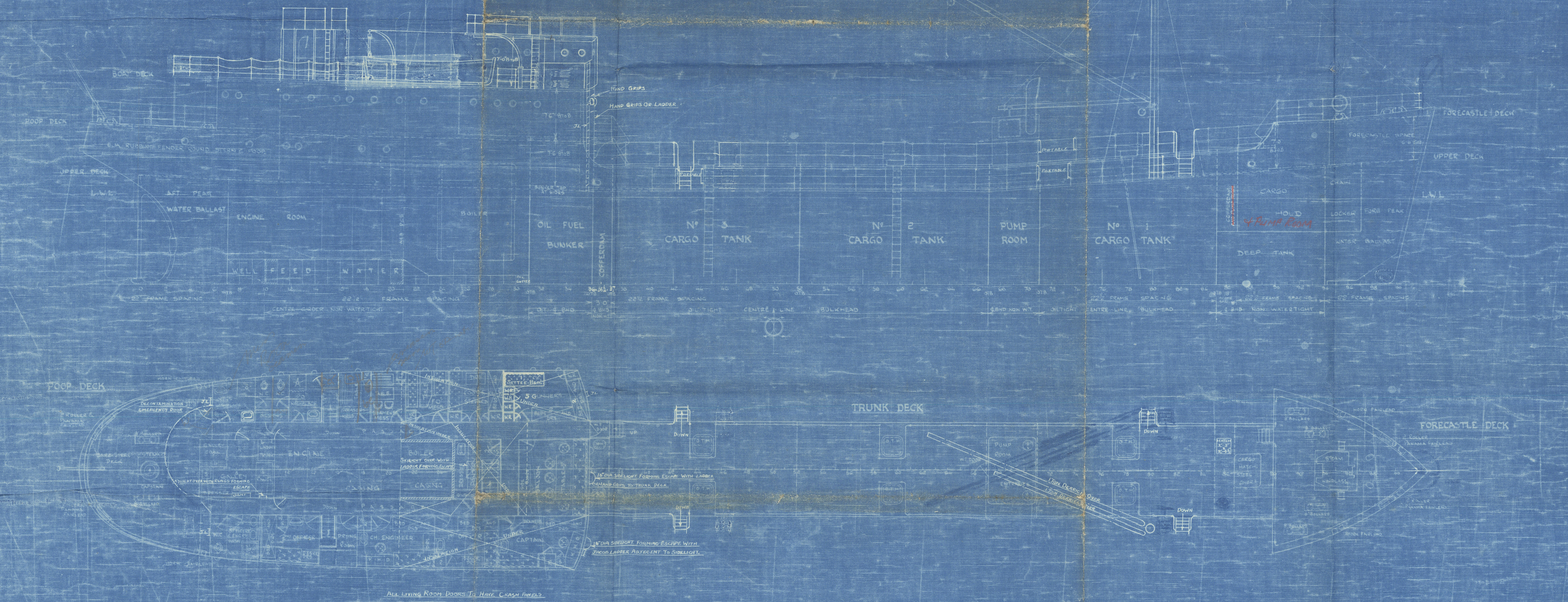
ON CARGO		CUBIC FT.	TONS
COMPARTMENT			
Nº 1 CARGO TANK	STAR	5,470	5.47
	PORT	5,470	5.47
Nº 2 CARGO TANK	STAR	5,470	5.47
	PORT	5,470	5.47
Nº 3 CARGO TANK	STAR	5,470	5.47
	PORT	5,470	5.47
TOTAL		31,020	31.02

370.0 x 710 TONS AT 52 CUBIC FEET PER TON

OIL FUEL BUNKERS		TONS
COMPARTMENT		
Nº 1 FUEL BUNKER	PORT	70
	STAR	70
Nº 2 FUEL BUNKER	PORT	70
	STAR	70
TOTAL		140

WATER BALLAST		TONS
COMPARTMENT		
Nº 1 WATER BALLAST	PORT	40
	STAR	40
Nº 2 WATER BALLAST	PORT	40
	STAR	40
TOTAL		160

FEED WATER TO B TANK 17 TONS
 TOTAL DEADWEIGHT
 ABOUT 840/850 TONS AT ABOUT 13'0" DRAFT



2

General Argt
Grangemouth Dkd.

No. 441.

Reference 6/11/42

PASS OF BALMAHA.

EX

EMPIRE DAMSEL.

General Argt
441.

