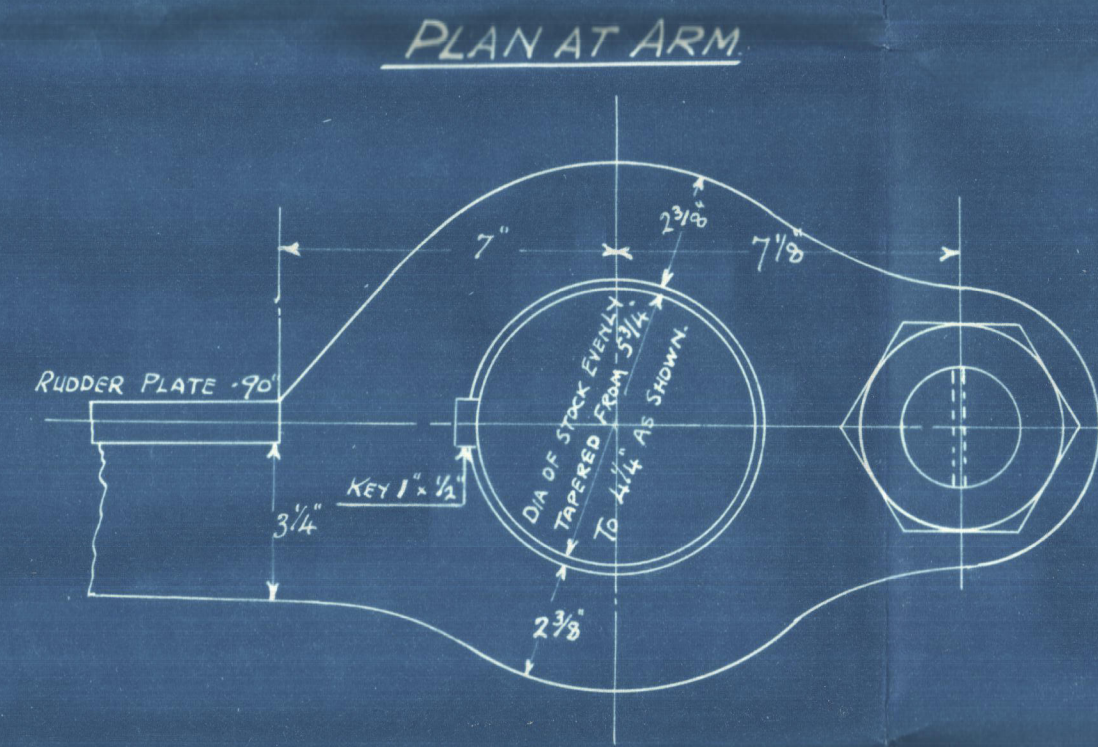
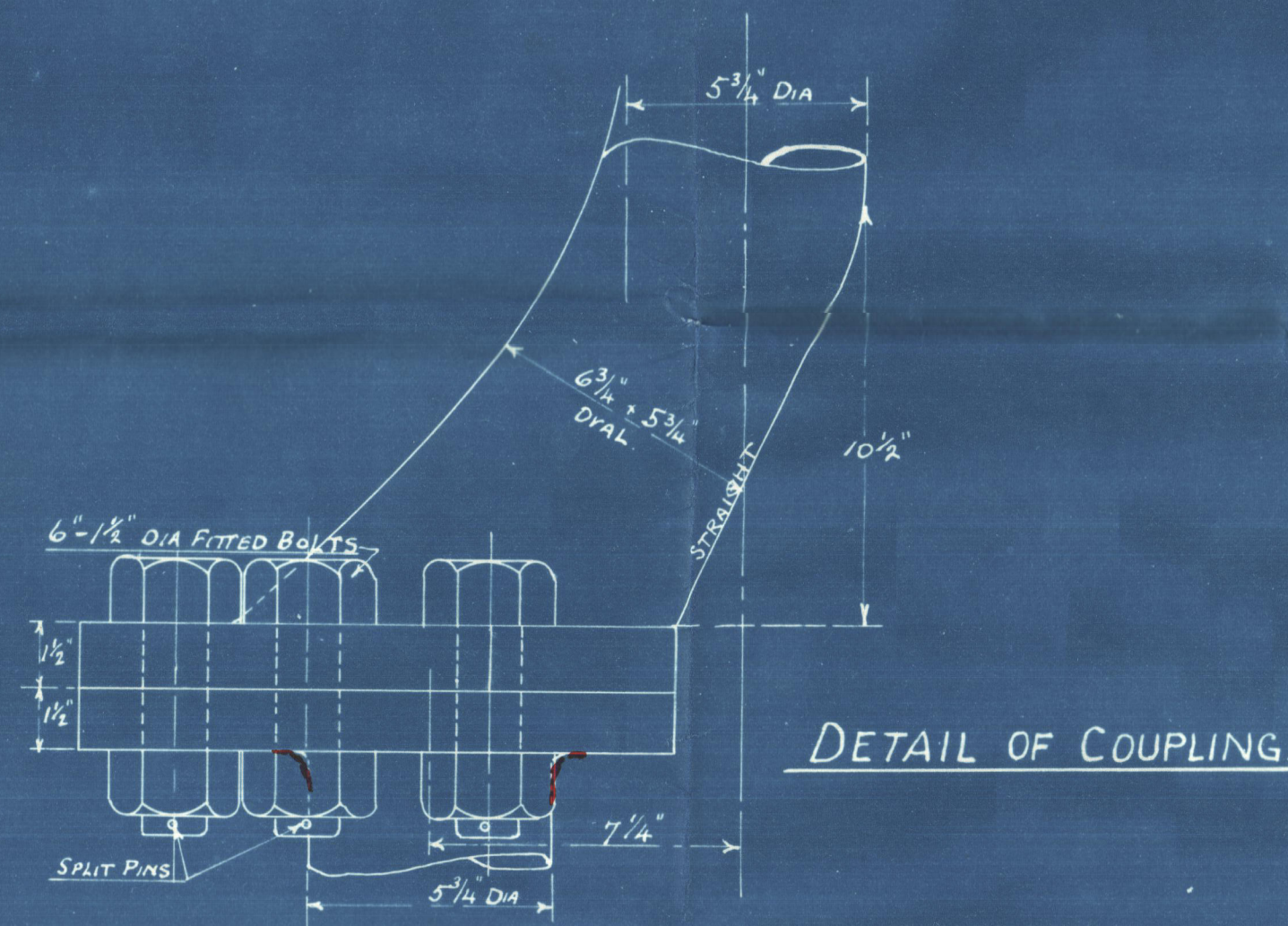
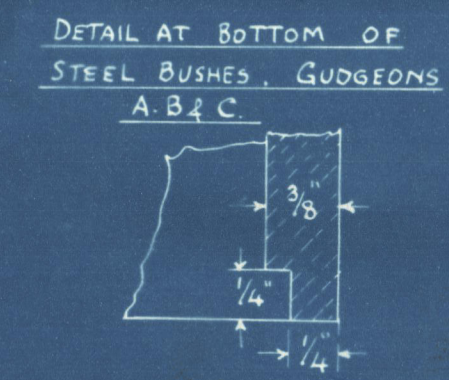
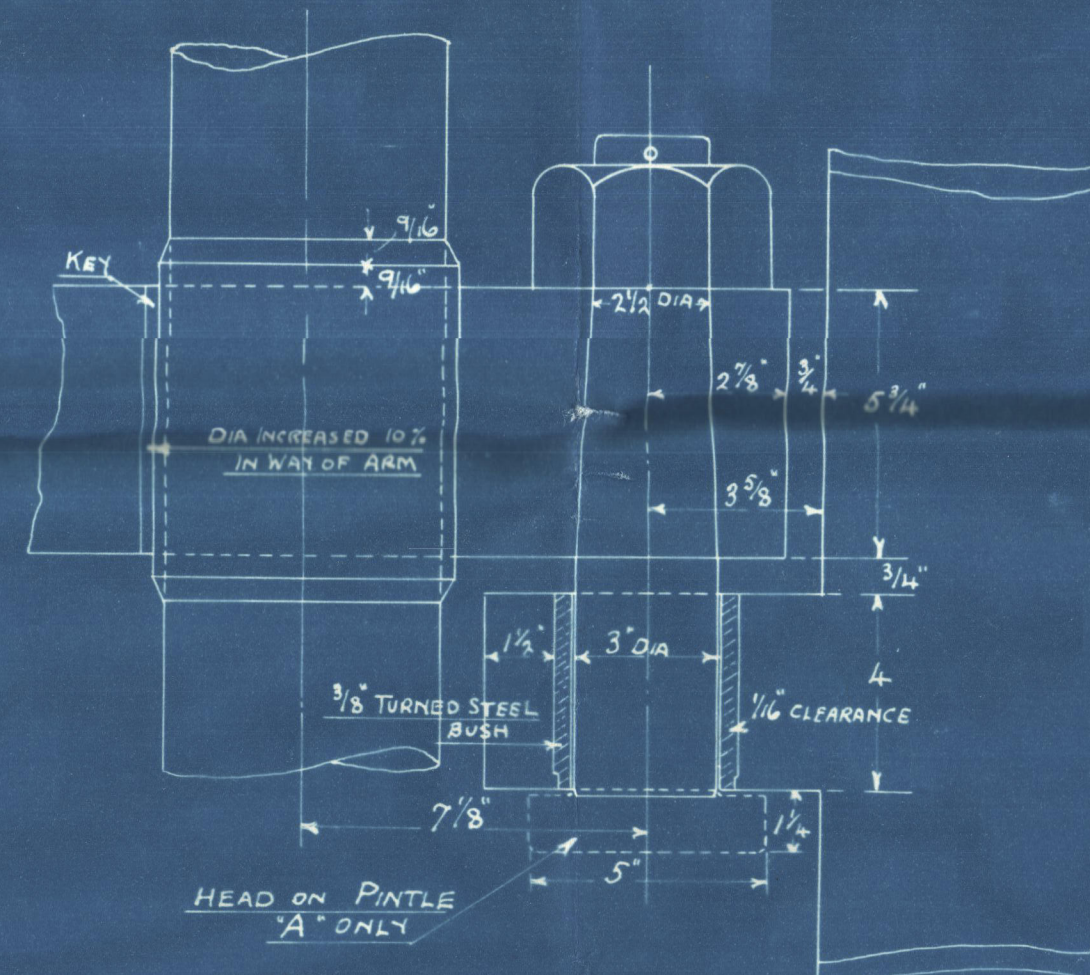


31/5/29

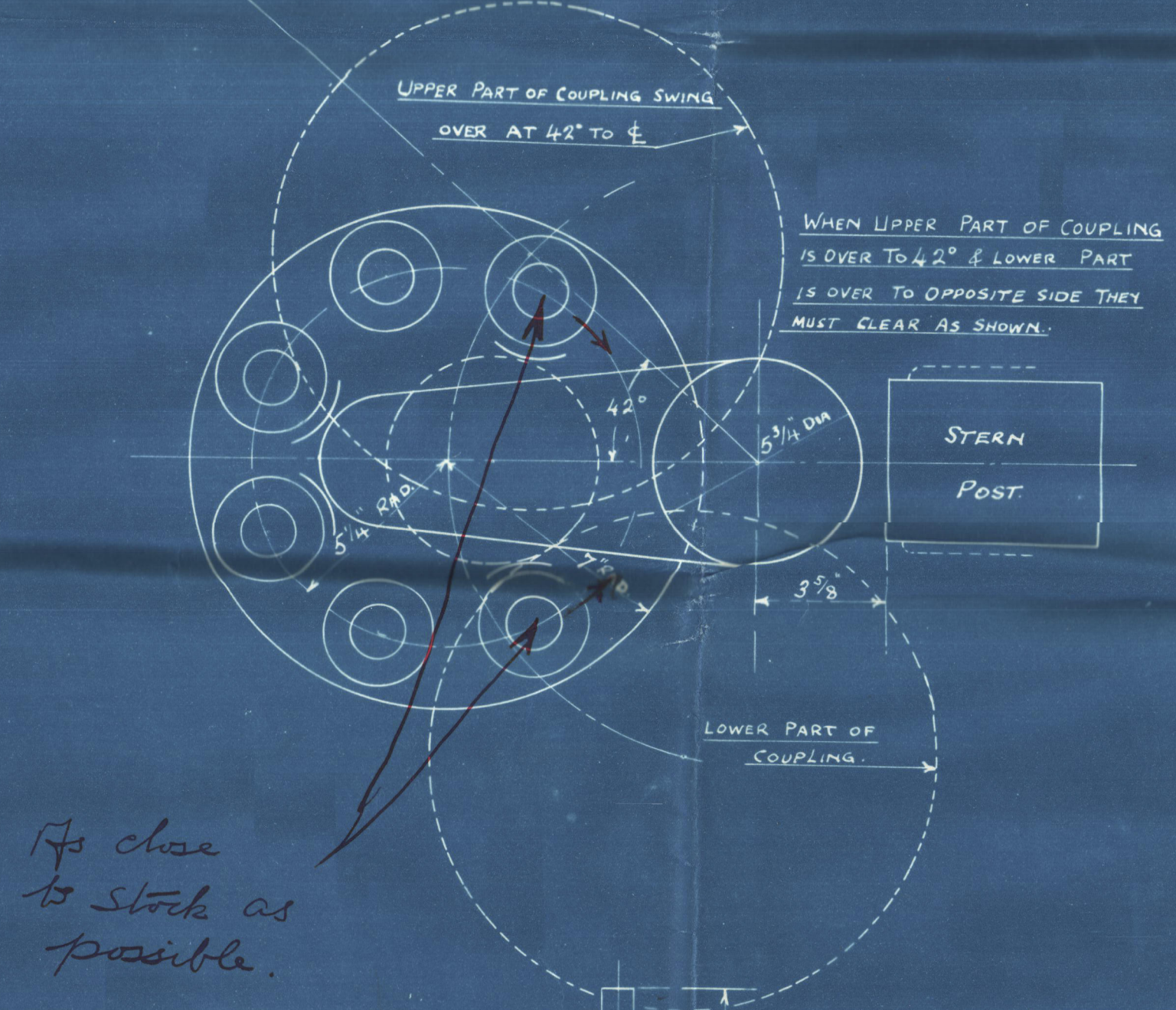


DETAIL AT "A"
"B" & "C" ARE SIMILAR



N^o 567 SHIP STERN FRAME

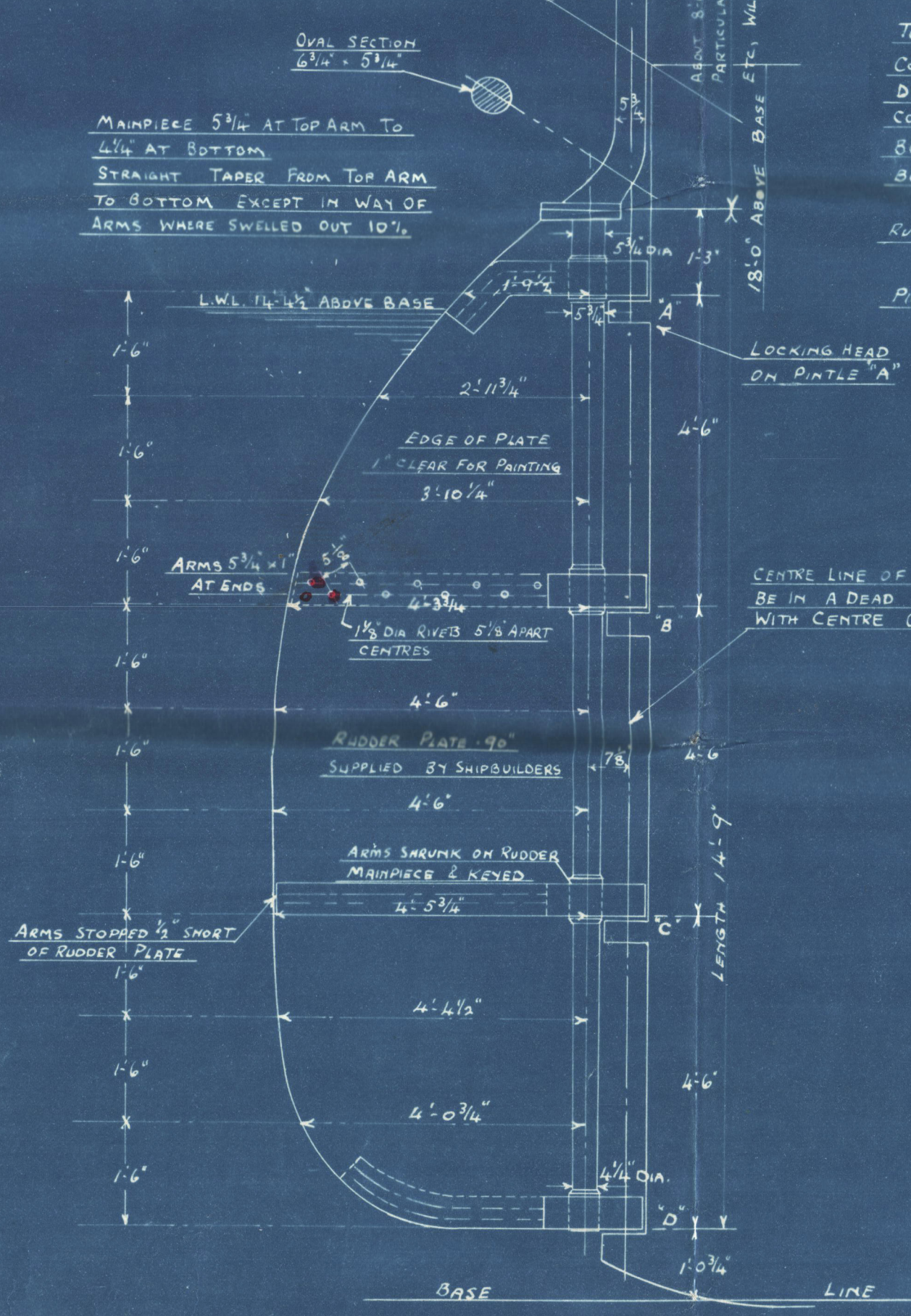
SCALES ARRGT: 1/2" = 1 FOOT
DETAILS 3" = 1 FOOT



As close to stock as possible.

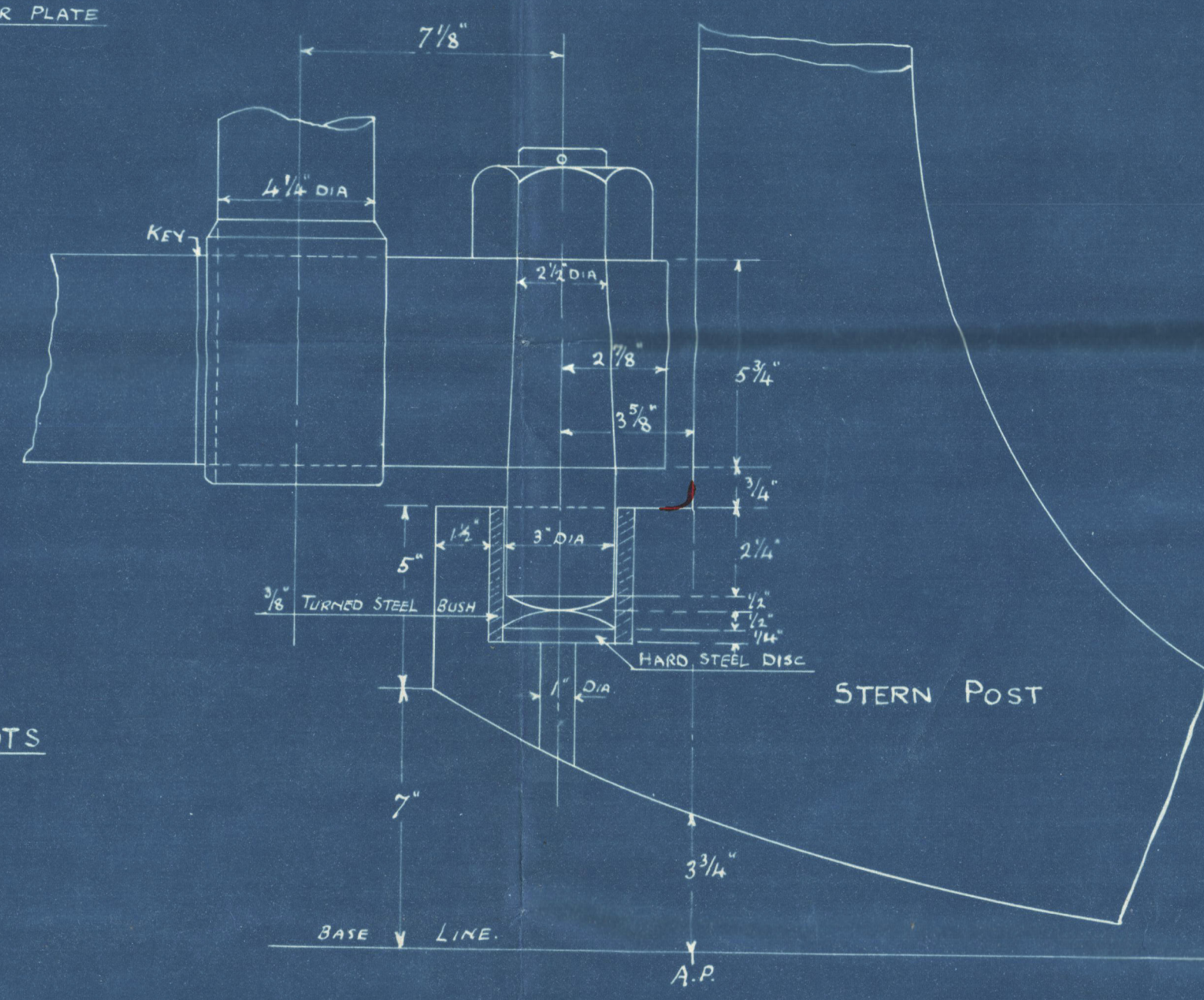
N^o 567 SHIP. RUDDER PLAN.

SCALES: ARRGT: 1/2" = 1 FOOT
DETAILS 3" = 1 FOOT



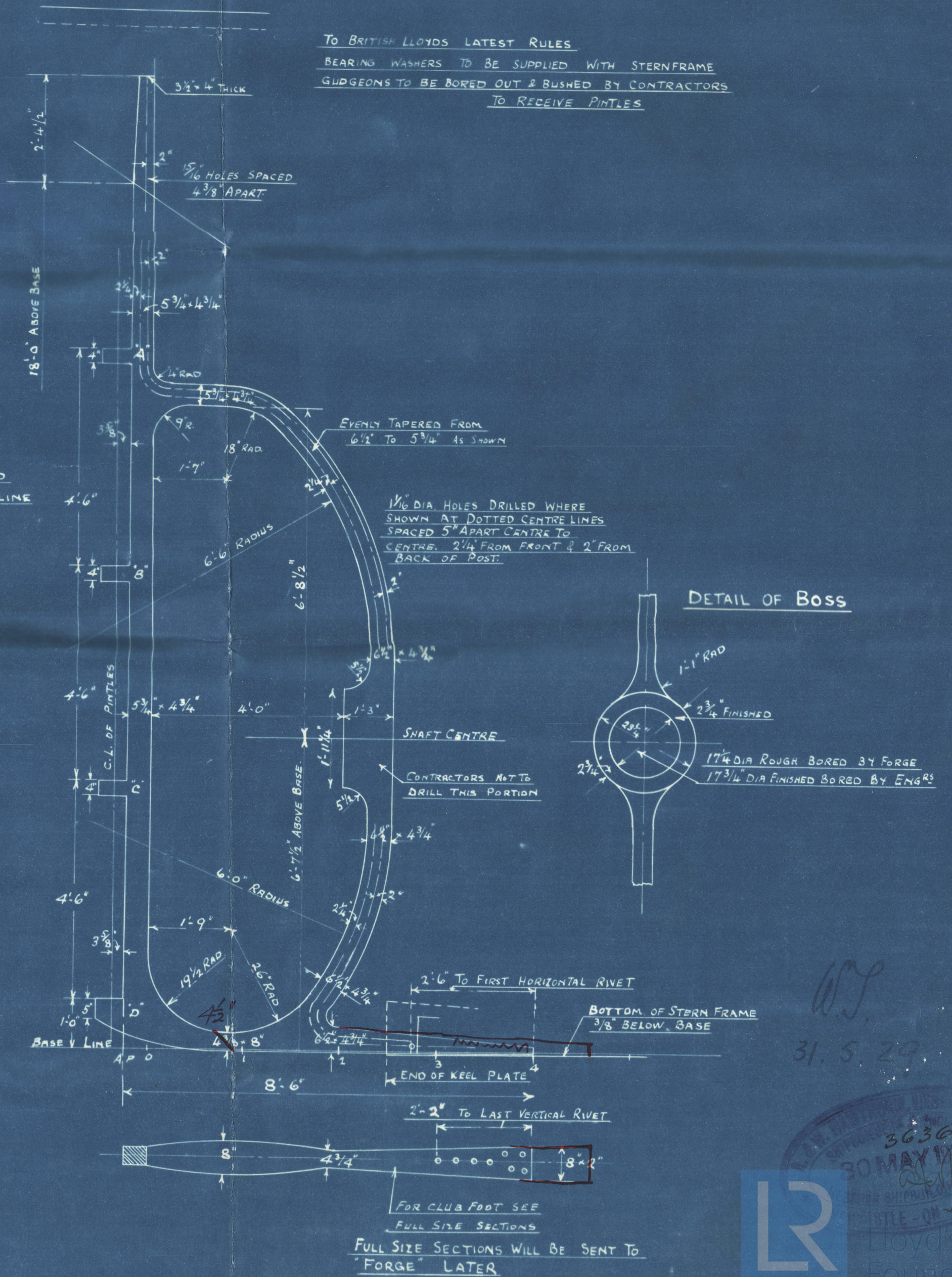
TO BRITISH LLOYD'S LATEST RULES
CONTRACTORS TO DRILL FOR RIVETS AS SHOWN
DIA OF HOLES TO BE 1/16" LARGER THAN RIVET AND TO BE COUNTERSUNK ON OUTSIDE OF RUDDER ARMS
BOLT HOLES TO BE DRILLED BY CONTRACTORS
BOLTS TO BE SUPPLIED BY CONTRACTORS & MARKED TO INDICATE WHERE FITTED
RUDDER FRAME TO BE DELIVERED COMPLETE WITH ARMS KEYS ON MAINPIECE
PINTLES FITTED BUT TO BE SUPPLIED LOOSE FROM ARMS AND MARKED AS TO WHERE FITTED
SPACING OF RUDDER ARMS TO BE VERIFIED FROM STERN FRAME
RUDDER STOCK TO BE ROUGH TURNED EXCEPT WHERE INDICATED TO BE SMOOTH TURNED
ARMS ARE TO BE ON ALTERNATE SIDES OF RUDDER PLATE

DETAIL AT "D"



AREA OF RUDDER = 57 SQ. FT
C.G. FROM C.L. PINTLES = 2.5 FT
A x D = 142.5
SPEED NOT EXCEEDING 10 KNOTS

GUDGEONS TO BE BORED IN A DEAD STRAIGHT LINE



DETAIL OF BOSS

31.5.29

ENCLOSURE TO

LLOYDS, NEWCASTLE

34/02742.

FROM R. & W. HAWTHORN, LESLIE & CO. LTD.,
HEBBURN-ON-TYNE.

1/2

Messrs. R & W. Hawthorn Leslie
& Co. Ltd.

Ship No. 567.

Stem & Rudder Frame.

W & R
S/S. "WILLIAM CASH".

84798



© 2020

Lloyd's Register
Foundation

005075-005081-0109 1/2