

# S.S. No 550-1 MIDSHIP SECTION.

SCALE: 1" = ONE FOOT.

DIMENSIONS 270'-0" BP x 38'-3" MLD x 18'-6" MLD. TO MAIN D<sub>5</sub>.

CLASS B.S.\*

DRAUGHT APPROX. 17'-0" (CARGO).

" " 16' 3" (PASSENGER)

PROPORTIONS -

DEPTH to BREADTH 18.5 = 48

LENGTH to DEPTH (M D<sub>5</sub>) 270 = 14.6

" " (POOP D<sub>5</sub>) 270 = 10.4

ALEXANDER STEPHEN & SONS LTD  
SHIPBUILDERS & ENGINEERS  
GLASGOW

24 JAN 1936

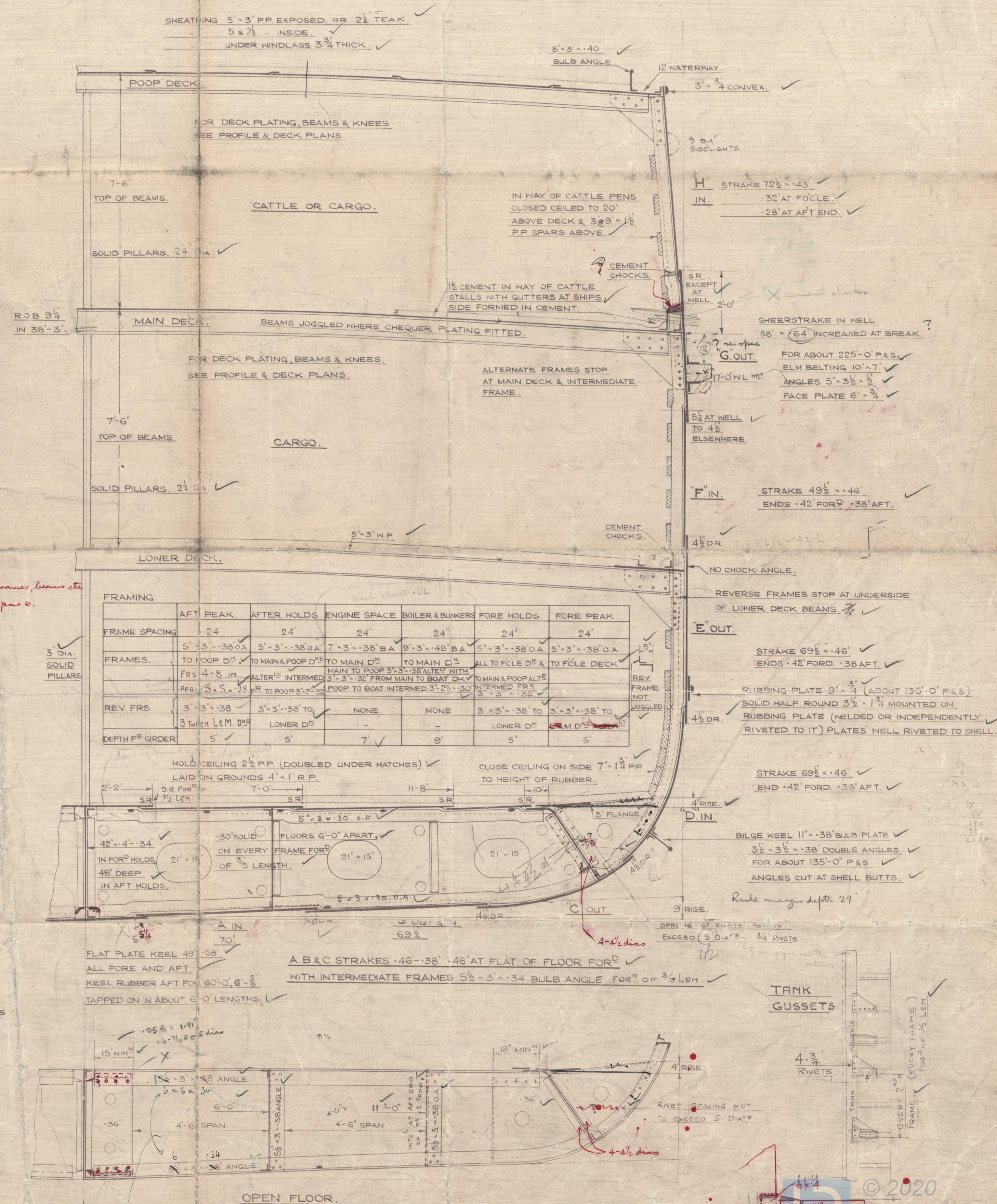
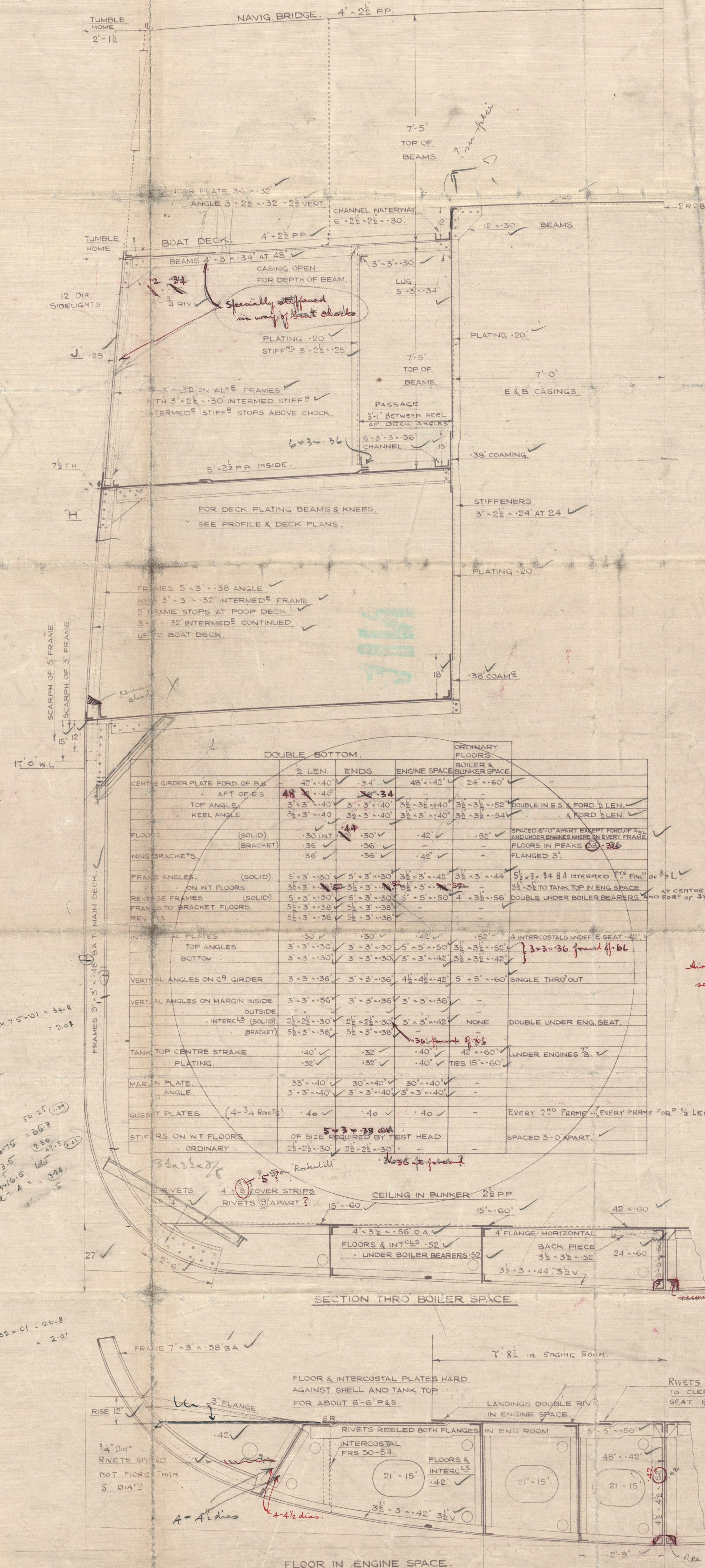
Approved  
30/1/36

FORGINGS.	
STEM	7 1/2" x 2" ROLLED STEEL BAR
STERN FRAME	PLAN WILL BE SUBMITTED
RUDDER	

EQUIPMENT NUMERAL	
UNDER DECK	270 x 38.25 x 18.5 = 1240
POOP & BRIDGE	176.65 x 38.25 x 7.5 = 254
FORECASTLE	44 x 38.25 x 7.5 = 62
UPPER BRIDGE	101 x 38.25 x 7.42 = 102
STEERING GEAR HOUSE	27 x 14 x 7.42 = 11
BRIDGE SHELTER	25 x 35.0 x 7.42 = 25
	1694 UPPER NUMBER = 1920

EQUIPMENT No 1634.	
2 BOMER ANCHORS EACH 34 CMTS. STOCKLESS.	
1	29
1 STREAM	11 1/2 EX STOCK.
240 FATHOMS 1 1/8 DIA. STUD CHAIN CABLE OR EQUIVALENT TAYCO 1 1/8"	
75	1" STREAM STUD CHAIN OR 3/8" DIA. S.W.R. OR 1 1/8" SHORT LINK CHAIN.
2 @ 90	6 1/2 HANSERS
2 @ 90	5 WARPS

WIDTH OF SHELL PLATES.	
1/2 BREADTH	19'-1 1/2"
DEPTH LESS RISE OF FLOOR.	17'-9"
SHELL ABOVE MAIN DECK.	38'-10"
LESS BILGE.	10'-11"
=	27'-11 1/2"
BILGE GIRTH	8'-10"
ALLONANCE	2'
LANDINGS @ 4 1/2	2'-3"
1 @ 5 1/2	5 1/2"
	39'-7 1/2"





1  
Midship Section.

A. Stephen & Sons.

N<sup>o</sup> 550/1.

20.1.36.

T.C. 11.3.36.

550. RATHLIN X

551. BEACHY. - SUNK

NY. GLENGARIFF

RETAIN

Midship Section.

A. Stephen & Sons. 550/1

Bag



© 2020

Lloyd's Register  
Foundation

005075-005081-0106