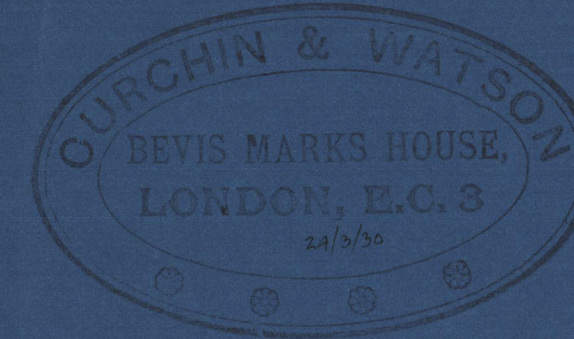


# PROFILE & DECK PLANS.

T.S. MOTOR TANKERS 450' B.P. x 61'-9" M. x 34' M.

SCALE 1/16" = 1 FOOT.

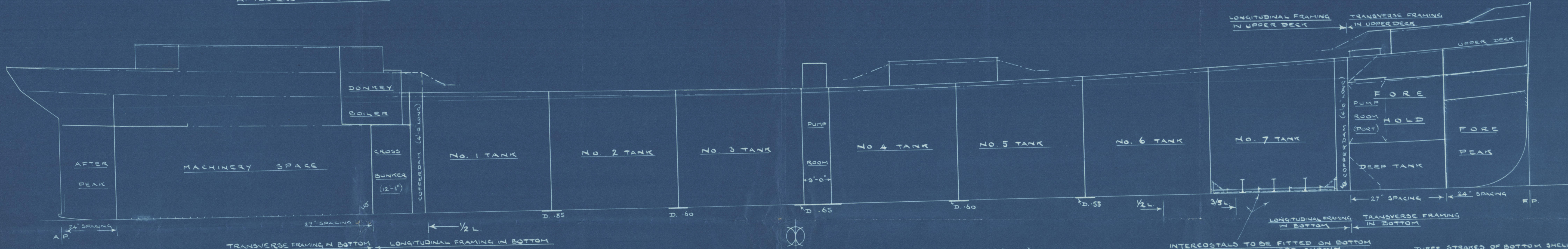
Fijenoord Co.



CURCHIN & WATSON,  
BEVIS MARKS HOUSE,  
BEVIS MARKS,  
LONDON E.C.3.

ARRANGEMENTS IN WAY OF  
AFTER END TO BE SUBMITTED.

ARRANGEMENTS IN WAY OF  
FORE END TO BE SUBMITTED.



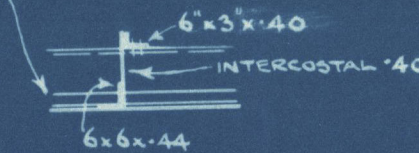
CONTINUITY OF STRENGTH TO BE  
MAINTAINED AT JUNCTION OF  
TRANSVERSE & LONGITUDINAL FRAMING.

DOUBLING PLATES (6' LONG) FITTED  
TO TWO STRAKES OF BOTTOM SHELL  
ON EACH SIDE OF THE CENTRE LINE  
WHERE MARKED 'D' ABOVE.

INTERCOSTALS TO BE FITTED ON BOTTOM  
IN CENTRE TANKS WHERE SHOWN  
BETWEEN THE LONGITUDINALS IN LIEU OF  
TAPERING THE SPACING OF THE LONGITUDINALS.

THREE STRAKES OF BOTTOM SHELL  
NEXT THE KEEL TO BE CARRIED  
FORWARD TO THE COLLISION  
BULKHEAD .65

BACK BARS 3 1/2" x 3 1/4" x .44 TO BE FITTED  
TO BOTTOM LONGITUDINALS IN FORWARD TANK.  
(STOPPED AT  
TRANSVERSE FLOORS)



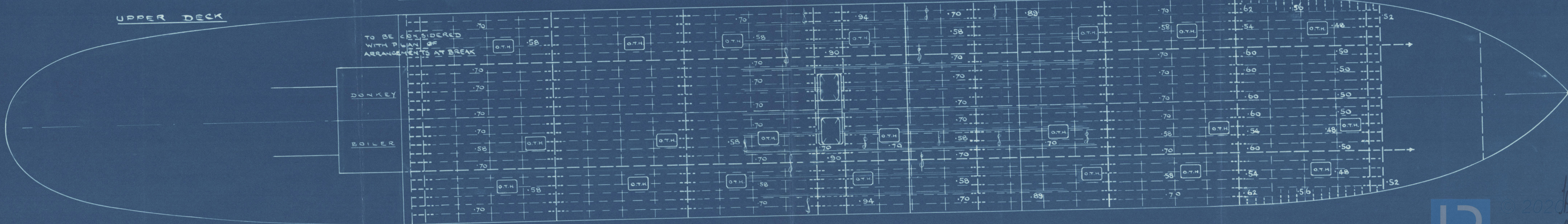
ARRANGEMENTS AT BREAK  
TO BE SUBMITTED.

SHEERSTRAKE AT  
POOP FRONT 1.16

SHEERSTRAKE AT BRIDGE ENDS  
1.16

CORNERS OF HATCHWAYS  
TO BE WELL ROUNDED.

UPPER DECK



© 2020 Lloyd's Register Foundation



~~GEN. ECKIN~~ 361

Profile & Dk.

"Malvinia"

RETAIN



© 2020

Lloyd's Register  
Foundation

1900-180500-560500