

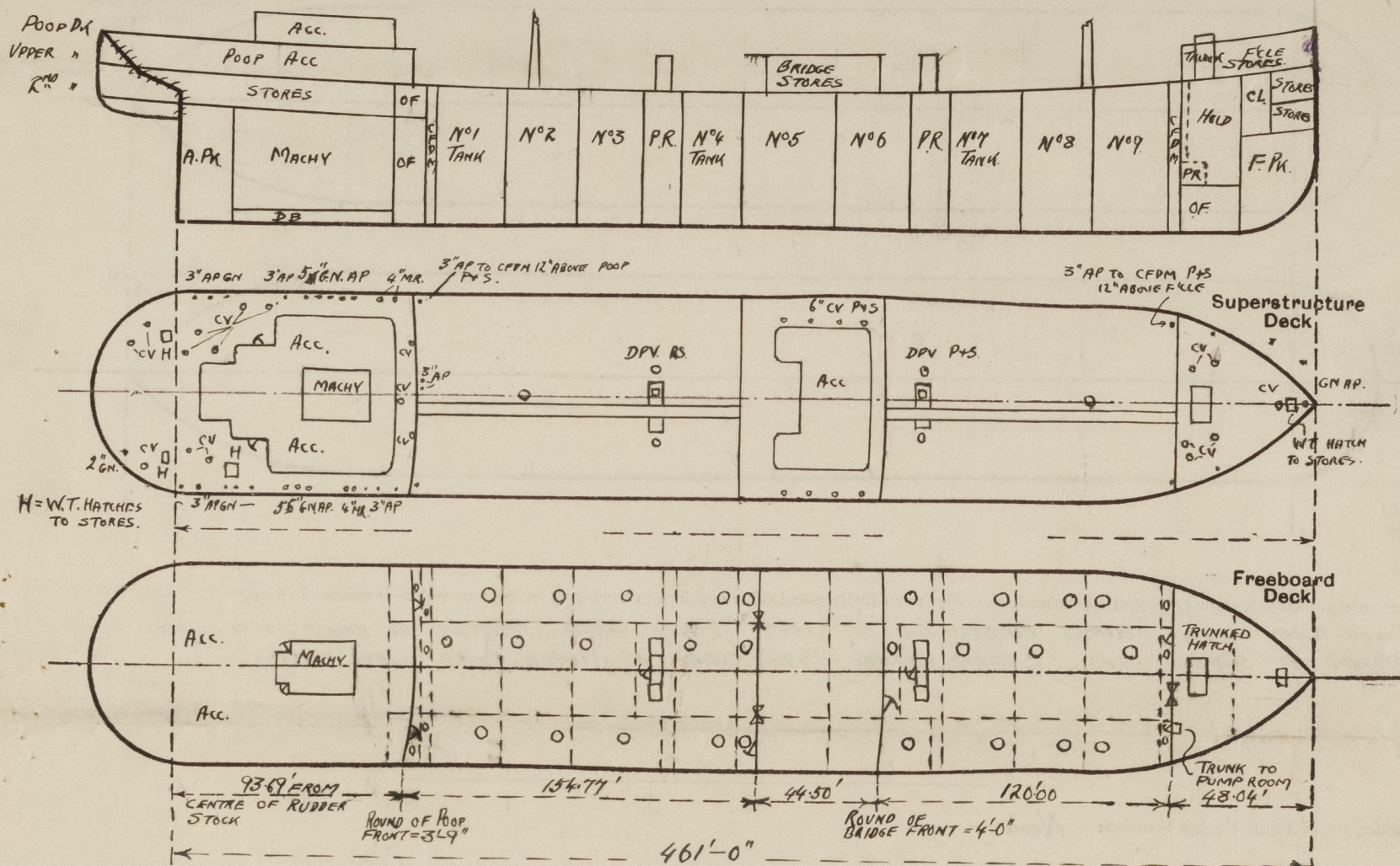
NEWCASTLE-ON-TYNE, No. 103004

Rpt. C.11.

## Lloyd's Register of Shipping.

Index No. 38041  
(For London Office only).SURVEYS FOR FREEBOARD.  
(CONDITIONS OF ASSIGNMENT.)Ship's Name EMPIRE NEPTUNE.Port of Survey NEWCASTLE-ON-TYNEOfficial Number 180222Surveyor's Signature A. HunterNationality and Port of Registry BRITISHDate of Survey 1945 DURING CONSTRUCTION

Disposition and dimensions of superstructures, trunks, deckhouses and machinery casings to be inserted in the diagrams and tabular statement:--



Particulars of Superstructures, Trunks, Casings, Deckhouses.

	Coaming	Plating	Stiffeners	Spacing	End Attachments of Stiffeners	Size of Openings	Height of Sills	Height of Casings
Poop Bulkhead ...	—	.44	11x4 1/2 x 40 B.A.	ABOUT 30"	TOP:— LUGS BTM:— BRACKETS	20'5"-0" x 2'-6"	18"	7'-6"
Raised Quarter Deck Bulkhead ...	—	—	—	—	—	—	—	—
Bridge, After Bulkhead ...	—	.32	5x3x30 O.A.	ABOUT 30"	RIVETED THRU BOUNDARY ANGLES	2@5'-1" x 3'-1"	18"	7'-6"
Bridge, Forward Bulkhead ...	—	.44	9x3 1/2 x 42 B.A.	" 33"	TOP:— BRACKETS BTM:—	1@5'-0" x 2'-6"	20"	7'-6"
Forecastle Bulkhead ...	—	.32	4x3 x 34 O.A.	" 30"	RIVETED THRU BOUNDARY ANGLES	1@5'-0" x 2'-6"	18"	7'-6"
Trunk, Aft ...	—	—	—	—	—	1@3'-8" x 2'-0"	24"	7'-6"
Trunk, Forward ...	—	—	—	—	—	—	—	—
Exposed Machinery Casings on Freeboard or Raised Quarter Decks ...	—	—	—	—	—	—	—	—
Exposed Machinery Casings on Superstructure Decks ...	.34	.30	3x3x30 O.A.	30 3/4"	BRKTS. AT TOP STIFFENERS CONTINUED BELOW	5'-0" x 2'-1"	21"	7'-6"
Machinery Casings within Superstructures not fitted with Class I Closing Appliances ...	—	—	—	—	—	—	—	—
ENTRANCES TO PUMP ROOMS	—	40 FRONT & SIDES	6x3x36 B.A.	30" x 33"	TOP:— BRACKETS	—	—	—
Deckhouses on Flush Deck Ships ON F.B.D. DECK.	—	.30 AFT.	4x3 x 32 O.A.	ABOUT 30"	BTM:— LUGS	4'-0" x 2'-3"	24"	7'-6"

Particulars of Closing Appliances (state if capable of being manipulated from both sides).

Poop Bulkhead ...	2-HINGED STEEL W.T. DOORS CLOSED BY CLIPS MANIPULATED BOTH SIDES
Raised Quarter Deck Bulkhead ...	—
Bridge, After Bulkhead ...	1-HINGED STEEL W.T. DOOR OPERATED BOTH SIDES 2-PORTABLE STEEL PLATES SECURED BY HOOK BOLTS SPACED 18"
Bridge, Forward Bulkhead ...	1-HINGED STEEL W.T. DOOR CLOSED BY CLIPS MANIPULATED BOTH SIDES
Forecastle Bulkhead ...	1-PORTABLE STEEL PLATE SECURED BY HOOK BOLTS SPACED 18"
Exposed Machinery Casings on Freeboard or Raised Quarter Decks ...	1-HINGED STEEL W.T. DOOR TO F.CLE CLOSED BY CLIPS MANIPULATED BOTH SIDES
Exposed Machinery Casings on Superstructure Decks ...	—
Machinery Casings within Superstructures not fitted with Class I Closing Appliances ...	HINGED STEEL DOORS, LOCKS & HANDLES, MANIPULATED BOTH SIDES.
PUMP ROOM ENTRANCES ON F.B.D. DK.	—
Deckhouses on Flush Deck Ships	HINGED STEEL DOORS, CLOSED BY CLIPS MANIPULATED BOTH SIDES.



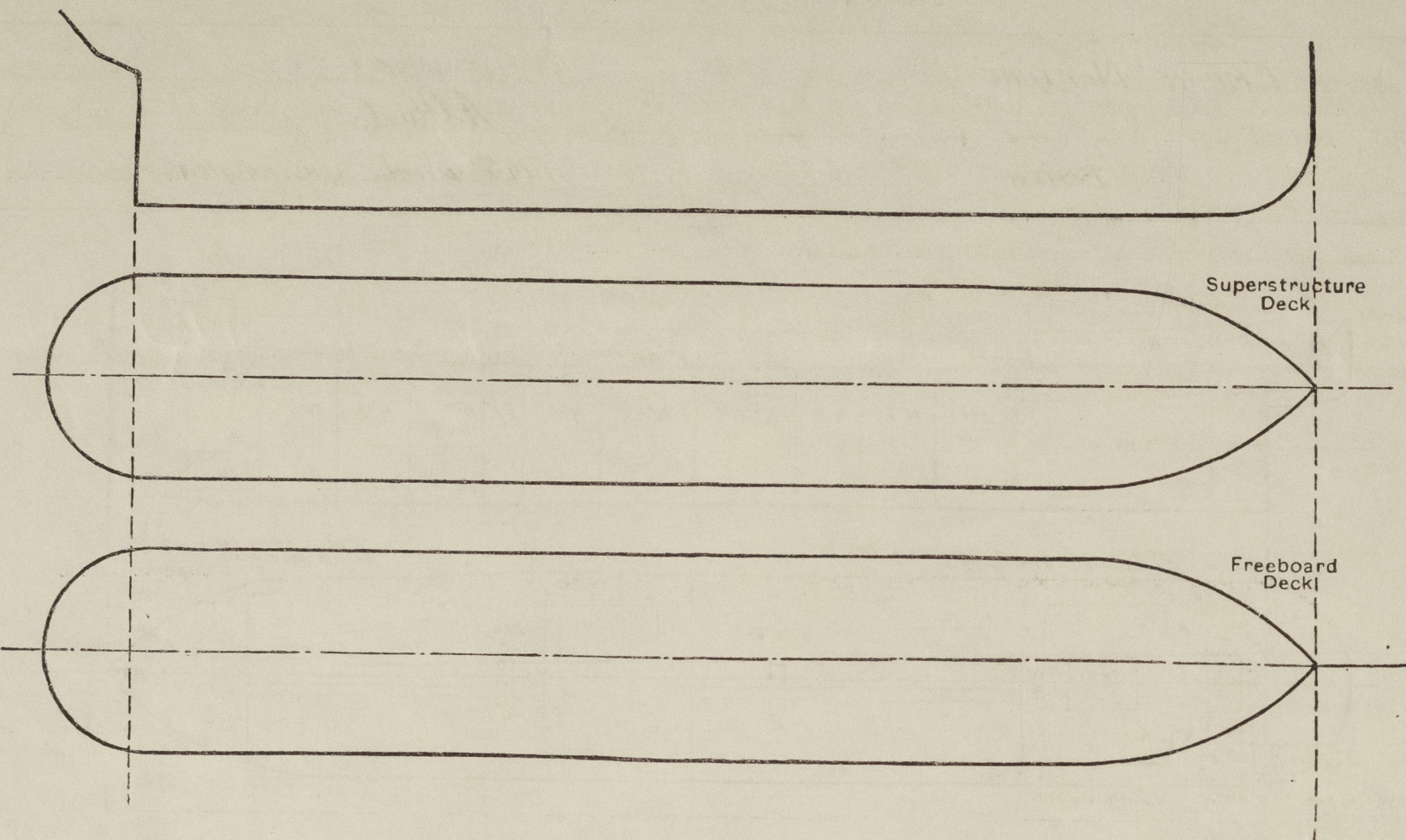
Name of Ship *SAN VIRGILIO*  
 Freeboard Report Examined  
 (Date) *19th 1957*

TO OPENINGS, ETC.

The following diagrams show which would affect the seaworthiness of the ship:—

Signed *[Signature]*

ys, gangway, cargo and coaling ports, ventilators, companionways, etc.,



Particulars of fiddle, funnel and ventilator coamings, engine room skylight and other openings in machinery casing tops and their means of closing:—  
*ENGINE ROOM SKYLIGHT, STRONGLY CONSTRUCTED OF STEEL. FIDLEY GRATINGS PROTECTED BY HINGED STEEL COVERS SECURED BY SCREWED CLIPS. 2 ESCAPE HATCHES 24" x 24" CLOSED BY CLIPPED HINGED STEEL COVER.*

Particulars of Flush Bunker Scuttles:— *NONE.*

Particulars of Companionways:—  
*ON UPPER DECK AT AFT END OF FORECASTLE TO AUXILIARY PUMP ROOM. OPENING IN TRUNK 3'-8" x 2'-0" SILL 24" DOOR: STEEL: HINGED SECURED BY CLIPS OPERATED BOTH SIDES.  
 ON POOP DECK TO POOP SPACE 2 STEEL HINGED W.T. DOORS TO POOP AND MACHINERY SPACE.*

Particulars of Ventilators in exposed positions on freeboard and superstructure decks:—  
*ON POOP DECK COWL VENTS. 6-6" DIA 30" HIGH 30" TH. 2-8" DIA 30" HIGH 32" TH. 2-10" DIA 30" HIGH 32" TH. MUSHROOM " 4-4" DIA 24" HIGH C.I. GOOSENECK " 8-5" " 30" "  
 BRIDGE DECK COWL VENTS. 6-6" DIA 30" HIGH 30" TH.  
 FORECASTLE " " 3-10" " 36" " 32" TH. 3-12" DIA 36" HIGH 34" TH.  
 UPPER DECK 4-24" DIA BERRK POST VENTS TO PUMP ROOMS EFFICIENTLY SUPPORTED.  
 WOOD PLUGS AND CANVAS COVERS SUPPLIED FOR COWL VENT COAMINGS. CANVAS COVERS SUPPLIED FOR G.N. VENTS.*

Particulars of Air Pipes in exposed positions on freeboard, raised quarter, or superstructure decks:—  
*POOP DECK C.I. GOOSENECKS. 8-3" DIA. 2-2 1/2" DIA OPENINGS 24" ABOVE DECK.  
 UPPER " 4-3" DIA " LED 12" ABOVE FORECASTLE DECK (2 OFF) & POOP DECK (2 OFF) EFFICIENTLY SUPPORTED  
 2-3" " MUSHROOM HEAD AIR PIPES LED 12" ABOVE POOP DECK  
 FORECASTLE " 1-4" " C.I. GOOSE NECK OPENING 18" ABOVE DECK  
 2-4" " MUSHROOM HEAD AIR PIPES " 24" " "*



Particulars of Gangway Cargo and Coaling Ports:—

EMERGENCY ESCAPE DOOR IN SHELL AT AFTER END OF POOP. OPENING 27"x28" CLOSED BY STEEL W.T. HINGED DOOR 40" THICK. SECURED BY STEEL STRONG BACK WITH SCREWED HANDLE. ✓

Particulars of Scuppers and Sanitary Discharge Pipes:—

SCUPPERS AND DISCHARGES FROM SPACES IN POOP DISCHARGE THROUGH TWO NON-RETURN STORM VALVES OR ONE NON RETURN STORM VALVE CONTROLLED FROM ABOVE <sup>POOP</sup> DECK ✓  
BRIDGE AND FORECASTLE SPACES DRAIN ONTO UPPER DECK THROUGH SCREWED HOLES WITH BRASS PLUGS ATTACHED BY CHAIN. ✓  
SCUPPERS THROUGH SHEER STRAKE ABOVE UPPER DECK 8"x3" 10P, 10S, 4 PIPE SCUPPERS (2P, 2S) AT POOP FRONT & BRIDGE FRONT THROUGH STRINGER AND SHEER STRAKE. ✓  
FROM FORECASTLE. 1-2 1/2" DISCHARGE EACH SIDE FITTED WITH SCREW PLUG AT UPPER DECK. ✓

Particulars of Side Scuttles:—

POOP SIDE.	23 P, 20 S	10" DIA	STRONG BRASS CONSTRUCTION.	CAST IRON DEADLIGHTS.	✓
" FRONT.	4-16" DIA.	1-10" DIA.	" " "	" " "	✓
BRIDGE SIDE.	4P, 5S	8"	" " "	" " "	✓
" FRONT	2-8" DIA	"	" " "	" " "	✓
" AFT	2-8" "	"	" " "	" " "	✓
FORECASTLE SIDE.	4P, 4S	8" DIA	" " "	" " "	✓
" FRONT.	3-8" DIA	"	" " "	" " "	✓

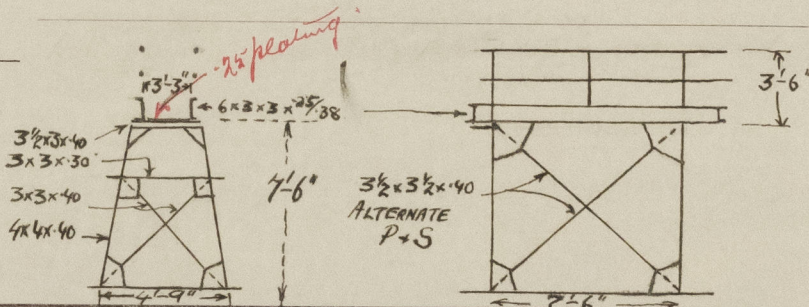
Vertical distance of Sill of lowest Side Scuttle above top of keel NO SIDE SCUTTLES BELOW FREEBOARD DECK. ✓

Particulars of Guard Rails:—

POOP, BRIDGE AND FORECASTLE. :- 3'-6" HIGH. 3 RAILS. STANCHIONS SPACED ABOUT 4'-9" (WELDED TO DECK) ✓  
FREEBOARD DECK:— 3'-6" " 3 " " " 5'-0" " " " ✓  
BULWARKS (SEE SKETCH) 3'-6" HIGH. 30" THICK. 7" B.A. RAIL BAR 6" B.A. STAYS SPACED ABOUT 6'-0". EXTRA STIFFENING ARRANGED IN VICINITY OF ERECTION BULKHEADS. ✓

Particulars of Gangways, Lifelines, etc.:—

NOTE. PLEASE SEE SECRETARY'S LETTER F DATED 13TH JUNE 1944



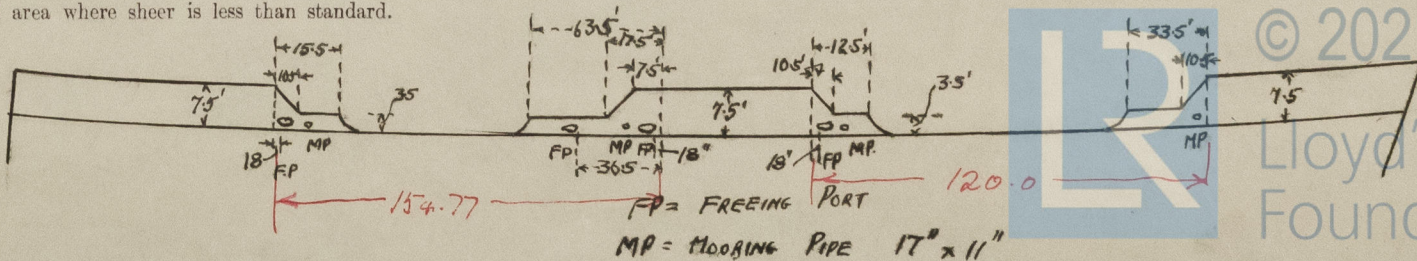
Particulars of Freeing Arrangements.

	Length of Bulwark	Height of Bulwark	Size of Freeing Ports	Number each side	Area each side	Rule area each side
After Well ... ..	154.77 79.0	SEE SKETCH	3'0" x 1'25"	3	10.25 Sq. Ft. 4 open rails	Tanker
Forward Well ... ..	120.0 46.0	SEE SKETCH	3'0" x 1'25"	1	3.417 Sq. Ft. 2 open rails	Tanker.

State position of each freeing port ... .. { After Well:—  
(F. and A. position and height above deck edge) { Forward Well:— } SEE SKETCH

State whether the freeing ports are fitted with shutters, bars, or rails, and give particulars of such:— 3 VERTICAL BARS AT EACH PORT SPACED 9" BOTTOM EDGE OF PORTS 15" ABOVE DECK.

Additional area where sheer is less than standard.



© 2021

Lloyd's Register Foundation

0174 3/3



# PARTICULARS OF PROTECTION TO OPENINGS, ETC.

HATCHWAYS ON FREEBOARD AND SUPERSTRUCTURE DECKS.										
Description of Hatchway	TO CARGO TANKS BY OFF	TO CARGO TANKS BY OFF	TO OIL FUEL BUNKERS BY OFF	IN FLE TO FORE PEAK STORES	TO CARGO HOLD (TRUNKED) TO U. DEK.	TO FLE STORES &c.	TO STORES IP IS	TO STORES IS.		
Dimensions of Hatchway	4'-0" DIA.	1'-6" x 2'-0"		2'-6" x 2'-6"	8'-0" x 8'-0"	1'-4" x 1'-10"	1'-4" x 1'-10"	2'-3" x 2'-3"		
COAMINGS	Height above Deck ... Thickness ... Stiffeners ... Brackets, Stays ...	10" 7 1/2" 7" INVERTED ANGLES WELDED TO DECK.	DITTO	9 x 3 1/2 x 42 B.A.	2'-10" 40" 40" 6 x 3 x 38 BA HORIZONTAL NONE	6" 40" 40" NONE	6" 40" 40" Do.	10" 40" 40" Do.		
HATCH BEAMS	Number ... Spacing ... Scantling and Sketch ... Bearing Surface ...	NONE	NONE	NONE	NONE	NONE	NONE	NONE		
FORE AND AFTERS	Number ... Spacing ... Unsupported Lengths ... Scantling* and Sketch ... Bearing Surface ...	NONE	NONE	NONE	NONE	NONE	NONE	NONE		
HATCH COVERS	Material ... Thickness ... How fitted ... Bearing Surface ...	STEEL 42 HINGED O.T. CLIPS	STEEL 50 BOLTED 7/8 @ 3 3/4	DITTO	STEEL 40 HINGED W.T. CLIPS.	STEEL 40 HINGED W.T. CLIPS, HEMP PACKING CLIPS SPACED 18" BOLTED W.T. HATCH ON LID 2'-3" x 3'-2"	STEEL 40 HINGED W.T. CLIPS.	Do.	Do.	
Spacing of Cleats										
Number of Tarpaulins										
<p>*Are wood fore and afters steel shod at all bearing surfaces?</p> <p>Are battens and wedges efficient and in good condition?</p> <p>Are tarpaulins in good condition and in accordance with rule requirements?</p> <p>Are lashings provided in accordance with rule requirements?</p>										

Particulars of any special features:—

Endorsement at first survey and at surveys for renewal of Certificate:—

The fittings and appliances are in accordance with the particulars shown on this form (or as now modified) and are in good condition.



© 2021

Lloyd's Register  
Foundation