

Lloyd's Register of Shipping.

SURVEYS FOR FREEBOARD.

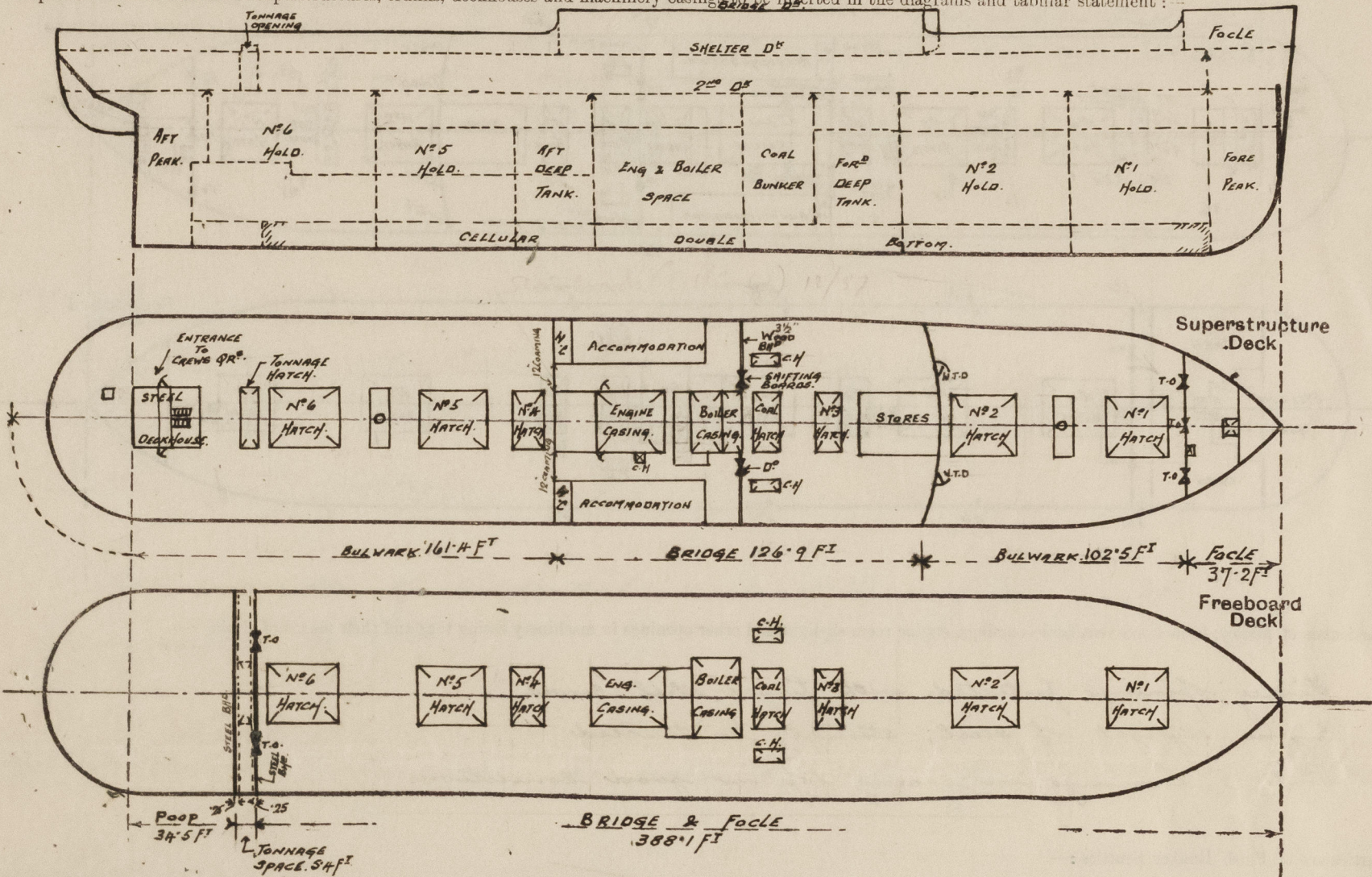
(CONDITIONS OF ASSIGNMENT.)

Ship's NameMANCHESTER PROGRESSPort of SurveyGlasgow.

Official Number147432Surveyor's SignatureP. Dunsmuir

Nationality and Port of RegistryBRITISH. MANCHESTERDate of Surveywhile building.

Disposition and dimensions of superstructures, trunks, deckhouses and machinery casings to be inserted in the diagrams and tabular statement :



Particulars of Superstructures, Trunks, Casings, Deckhouses.

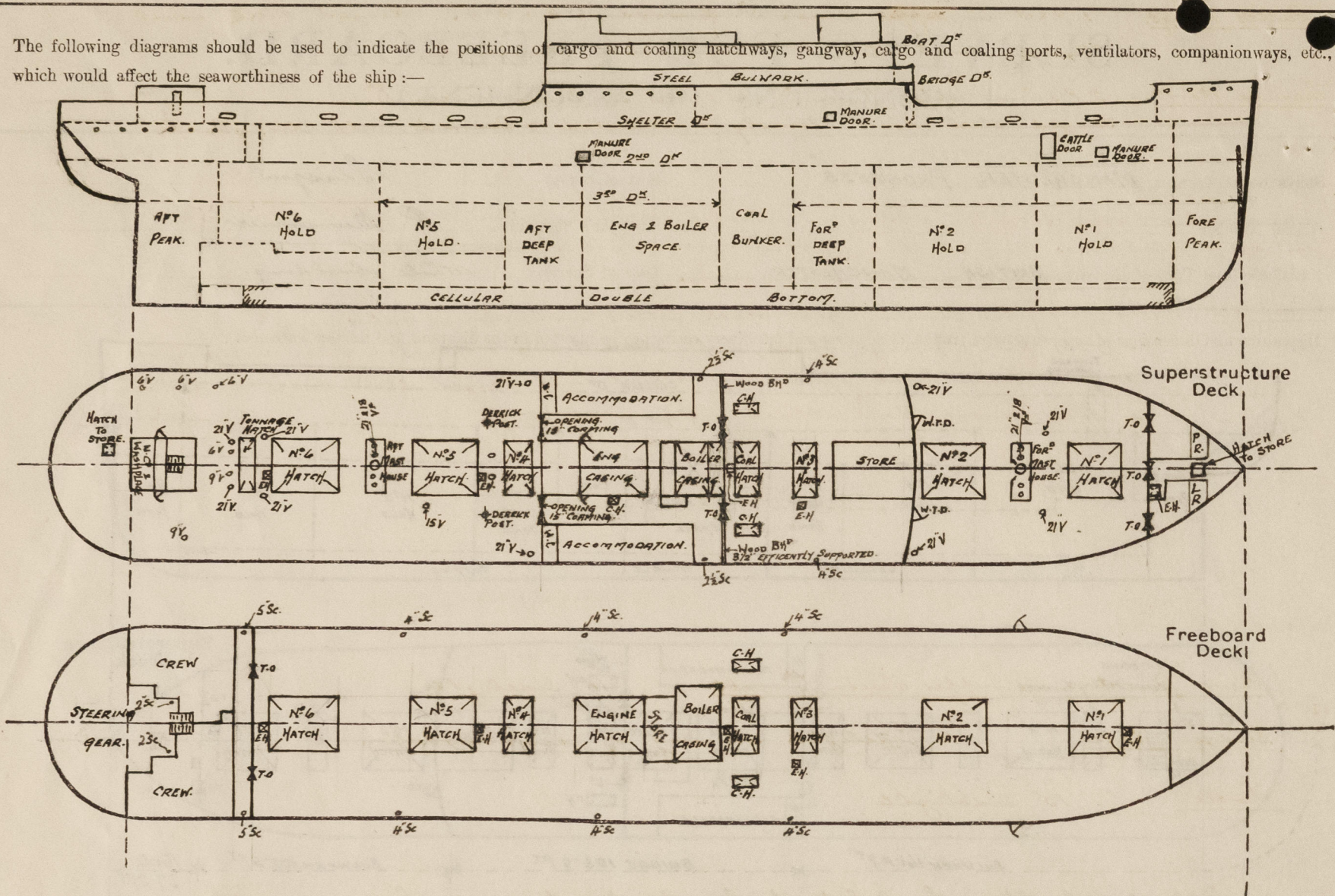
	Coaming	Plating	Stiffeners	Spacing	End Attachments of Stiffeners	Size of Openings	Height of Sills	Height of Casings
Poop Bulkhead	30	PLATING	FLANGED 3 1/2	36	NONE	NONE		8'-3"
Raised Quarter Deck Bulkhead								
Bridge, After Bulkhead	30	PLATING	FLANGED 3 1/2	36	NONE	2 2 5'-6" x 3'-1"	18"	8'-3"
Bridge, Forward Bulkhead								
Forecastle Bulkhead								
Trunk, Aft								
Trunk, Forward								
Exposed Machinery Casings on Freeboard or Raised Quarter Decks								
Exposed Machinery Casings on Superstructure Decks	15" x 40	34	3 x 3 x 30	32 1/2	BRACKETED AT CASING TOP	1 P&S 5'-3" x 2'-0"	15"	7'-6"
Machinery Casings within Superstructures not fitted with Class I Closing Appliances	18" x 42	26	3 x 3 x 30	32 1/2	NONE	NONE		8'-3"
Deckhouses on Flush Deck Ships								

Particulars of Closing Appliances (state if capable of being manipulated from both sides).

Poop Bulkhead	Intact
Raised Quarter Deck Bulkhead	
Bridge, After Bulkhead	3" Shifting boards full height of openings, fitted in channels riveted to bulkhead.
Bridge, Forward Bulkhead	
Forecastle Bulkhead	
Exposed Machinery Casings on Freeboard or Raised Quarter Decks	
Exposed Machinery Casings on Superstructure Decks	Hinged steel doors. Workable from both sides.
Machinery Casings within Superstructures not fitted with Class I Closing Appliances	No openings.
Deckhouses on Flush Deck Ships	

PARTICULARS OF PROTECTION TO OPENINGS, ETC.

The following diagrams should be used to indicate the positions of cargo and coaling hatchways, gangway, cargo and coaling ports, ventilators, companionways, etc., which would affect the seaworthiness of the ship:—



Particulars of fidley, funnel and ventilator coverings, engine room skylight and other openings in machinery casing tops and their means of closing:—

*Fidley openings protected with hinged steel covers.
Engine skylight of steel, strongly constructed.
Vents & coverings on casing top in good condition.*

Particulars of Flush Bunker Scuttles:—

None.

Particulars of Companionways:— Entrance to Crew's Quarters in Steel backhouse on Shelter Deck aft.

*Hinged teak door (P&S) 5'-3" x 2'-0". Sill 18" above wood deck.
Door workable from both sides.*

Particulars of Ventilators in exposed positions on freeboard and superstructure decks:—

*Focle D^e 4-18" V^s to Hold & L^s Deck, Laming 20" x 40"
SHELTER DECK FOR^d WELL 1-21" V (P&S) abreast mast house, Laming 36" x 40"; 1-21" V (P&S) at Bridge front, Laming 30" x 40"
TOP OF FOR^d MAST HOUSE 2-18" V^s & 2-21" V^s to Hold & L^s Deck, Laming 30" x 40"; TOP OF AFT MAST HOUSE 2-18" V^s & 2-21" V^s Laming 30" x 40"
BRIDGE DECK 1-21" V (P&S) to Hold & L^s Deck, Laming 21" x 40"; 1-15" V (P&S) to L^s Deck, Laming 21" x 36"; 1-10" V (P&S) to Deep Tank, Laming 21" x 32"
1-18" V (P&S) to Bridge Space, Laming 21" x 40"
SHELTER DECK AFT 1-21" V (P&S) at Bridge end, to Hold & L^s Deck, Laming 30" x 40"; 2-10" V^s between N^o 4 & 5 Hatches, to Deep Tank, Laming 30" x 32"
1-15" V (S) abreast N^o 5 Hatch, to L^s Deck, Laming 30" x 36"
1-21" V (P&S) abreast L^s Hatch & N^o 6 Hatch, to Hold & L^s Deck, Laming 30" x 40"
1-21" V (P&S) abreast L^s Hatch to Hold & L^s Deck, Laming 30" x 40"
1-12" V at Centre in front of Aft Backhouse, to Tunnel, Laming 30" x 34"
4-6" V^s to L^s Deck, Laming 36" x 30" & 2-9" V^s to L^s Deck, Laming 18" x 32"
BOAT DECK 1-21" V (P&S) & 1-18" V (P&S) abreast L^s Hatch to Hold & L^s Deck, Laming 21" x 40"; 2-12" V^s at aft end of N^o 3 Hatch to Hold, Laming 21" x 34"; 1-18" V (P&S) to Hold, Laming 21" x 40"
All vent laming to Rule requirements & fitted with wood plugs & Canvas covers.*

Particulars of Air Pipes in exposed positions on freeboard, raised quarter, or superstructure decks:—

*Focle D^e 1-4" to Fore Peak 1-4" (P) to double bottom 18" high.
SHELTER D^e FOR^d WELL 3-3 1/2" at Centre line in way of Mast House to double bottom. 22" high.
BRIDGE D^e 2-5" (P&S) 1-6" (P&S) 2-3 1/2" (P&S) 1-23" (P&S) in passage at deckhouse side, to double bottom & deep tank. 18" high.
SHELTER D^e AFT 1-2 1/2" (P&S) to afterdam in double bottom; 1-5" (P&S) to double bottom abreast N^o 4 Hatch.
1-3 1/2" (P&S) x 1-3 1/2" (P) abreast aft Mast House to double bottom.
1-3" (P&S) abreast aft deckhouse, to after Peak. all 22" high.*

All air pipes fitted with Canvas covers.

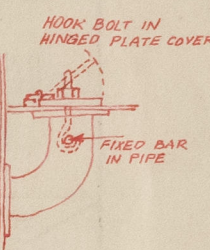
Manchester Progress

Particulars of Gangway Cargo and Coaling Ports:—

*Battle D^e 1 P&S in upper Tween D^e forward. 6'-4" x 4'-4". Hinged steel doors strongly constructed & secured with strongbacks.
L^s Hatch D^e 2 P&S in upper Tween D^e & 1 P&S in Bridge Tween D^e. Hinged steel doors strongly constructed & secured with strongbacks.*

Particulars of Scuppers and Sanitary Discharge Pipes:—

*Sanitary Discharges from W.C. & baths in midship accommodation & from W.C. & washplaces in after deckhouse, carried through ship's side above freeboard deck.
W.C. discharges only fitted with storm valve.
Scuppers 1-2" (P&S) from steering gear space, fitted with storm valve.
1-5" (P&S) from L^s Hatch space, with storm valve & operated from Shelter Deck.
3-4" from Tween Deck space (P&S) closed with hinged steel covers as approved.
1-4" from Bridge space, closed with wood plug.*



Particulars of Side Scuttles:—

*Crews Quarters in upper Tween D^e aft 10" sidelights
Bridge Space 10" sidelights in way of accommodation.
Lock 10" sidelights*

All sidelights of substantial construction & fitted with deadlights.

Vertical distance of Sill of lowest Side Scuttle above top of keel *No sidelights below freeboard deck.*

Particulars of Guard Rails:—

*Lock D^e Rails 3'-9" high with 3 rods & stanchions about 5'-0" apart.
Bridge D^e Steel bulwark 3'-6" high full length.
Shelter D^e Steel bulwark from Bridge front to Lock & from Bridge end to Stern. 3'-6" high, with 3 freeing ports 4'-9" x 9" forward (P&S) & 5 freeing ports 4'-9" x 9" aft (P&S).*

Particulars of Gangways, Lifelines, etc.:—

None.

Particulars of Freeing Arrangements.

	Length of Bulwark	Height of Bulwark	Size of Freeing Ports	Number each side	Area each side	Rule area each side
After Well <i>Tonnage Space</i>	...	NONE				
Forward Well	...					

State position of each freeing port ... After Well:—
(F. and A. position and height above deck edge) Forward Well:—

State whether the freeing ports are fitted with shutters, bars, or rails, and give particulars of such:—

Additional area where sheer is less than standard.

PARTICULARS OF PROTECTION TO OPENINGS, ETC.

HATCHWAYS ON FREEBOARD AND SUPERSTRUCTURE DECKS.															
FREEBOARD DECK.															
SUPERSTRUCTURE DECKS.															
IN BRIDGE															
Description of Hatchway	N ^o 1 HATCH	N ^o 2 HATCH	N ^o 3 HATCH	COAL HATCH	N ^o 4 HATCH	N ^o 5 HATCH	N ^o 6 HATCH	N ^o 1 HATCH	N ^o 2 HATCH	N ^o 3 HATCH	COAL HATCH	N ^o 4 HATCH	N ^o 5 HATCH	N ^o 6 HATCH	
Dimensions of Hatchway	27'-0" x 18'-0"	32'-4 1/2" x 18'-0"	13'-6" x 18'-0"	10'-9 3/4" x 18'-0"	16'-2 3/4" x 18'-0"	29'-8 3/4" x 18'-0"	24'-3 3/4" x 18'-0"	27'-0" x 18'-0"	32'-4 1/2" x 18'-0"	13'-6" x 18'-0"	10'-9 3/4" x 18'-0"	16'-2 3/4" x 18'-0"	29'-8 3/4" x 18'-0"	24'-3 3/4" x 18'-0"	
COAMINGS	Height above Deck	B.A. ✓	B.A. ✓	B.A. ✓	B.A. ✓	B.A. ✓	B.A. ✓	30" ✓	30" ✓	B.A. ✓	B.A. ✓	30" ✓	30" ✓	30" ✓	
	Thickness	9 x 3 x 1/2	9 x 3 x 1/4	9 x 3 x 1/2	9 x 3 x 1/2	9 x 3 x 1/2	9 x 3 x 1/2	1/4 ✓	1/4 ✓	1/4 ✓	1/4 ✓	1/4 ✓	1/4 ✓	1/4 ✓	
	Stiffeners	✓	✓	✓	✓	✓	✓	7 x 3 x 40 BA	7 x 3 x 40 BA	7 x 3 x 40 BA	7 x 3 x 40 BA	7 x 3 x 40 BA	7 x 3 x 40 BA	7 x 3 x 40 BA	
	Brackets, Stays	✓	✓	✓	✓	✓	✓	2 P & S.	3 P & S.	3 P & S.	3 P & S.	1 P & S.	2 P & S.	2 P & S.	
HATCH BEAMS	Number	5	6	2	1	3	5	4	6	2	1	3	5	4	
	Spacing	4'-6"	4'-7 1/2"	4'-6"	5'-4 1/2"	4'-0 1/2"	4'-11 3/8"	4'-10 1/4"	4'-6"	4'-7 1/2"	4'-6"	5'-4 1/2"	4'-0 1/2"	4'-11 3/8"	
	Scantling and Sketch	ROLLER WEBS PLATE ANG. T & B.	ROLLER WEBS	ROLLER WEBS	3/16" 3/16"	1/4" 3/4"	1/4" 3/16"	15 1/2 x 35	15 x 35	16 x 34	21 x 38	19 1/2 x 34	12 1/2 x 34	13 1/2 x 34	
	Bearing Surface	3" ✓	3" ✓	3" ✓	3" ✓	3" ✓	3" ✓	3" ✓	3" ✓	3" ✓	3" ✓	3" ✓	3" ✓	3" ✓	
FORE AND AFTERS	Number	ESCAPE HATCH 5 IN N ^o	TRIMMING HATCH (P & S) 20' x 30'	COAL HATCH AT SIDE OF CRANE (3) IN BRIDGE	ESCAPE HATCH IN BRIDGE	HATCH ON SHIP'S PEAK STORE.	HATCH IN FOCLE TO FORE PEAK STORE.	ESCAPE HATCH IN FOCLE TO TWEEN DECK	N ^o 3 COAL HATCH BOAT D ^{eck}	COAL HATCH BOAT D ^{eck}	TRIMMING HATCH (P & S) IN BRIDGE	Tonnage Hatch.			
	Spacing	20' x 30'	10'-9 3/4" x 3'-0"	2'-6" x 2'-6"	20' x 30'	3'-2" x 2'-6"	3'-6" x 3'-0"	20' x 30"	13'-6" x 10'-9 3/4"	13'-6" x 10'-9 3/4"	SPACE ABREAST COAL HATCH.	12' x 32' x 40 B.A.			
	Unsupported Lengths	9 x 3 x 40 BA	COMING 18" x 40	COMING 18" x 40	COMING 18" x 40	COMING 18" x 40	COMING 18" x 40	COMING 18" x 40	COMING 18" x 40	COMING 18" x 40	COMING 18" x 40	COMING 18" x 40	COMING 18" x 40		
	Scantling* and Sketch	2 1/2 PLUG COVERS BEARING 2 1/2" CLEATS 16"	2 1/2 PLUG COVERS BEARING 2 1/2" CLEATS 16"	2 1/2 PLUG COVERS BEARING 2 1/2" CLEATS 16"	2 1/2 PLUG COVERS BEARING 2 1/2" CLEATS 16"	2 1/2 PLUG COVERS BEARING 2 1/2" CLEATS 16"	2 1/2 PLUG COVERS BEARING 2 1/2" CLEATS 16"	2 1/2 PLUG COVERS BEARING 2 1/2" CLEATS 16"	2 1/2 PLUG COVERS BEARING 2 1/2" CLEATS 16"	2 1/2 PLUG COVERS BEARING 2 1/2" CLEATS 16"	2 1/2 PLUG COVERS BEARING 2 1/2" CLEATS 16"	2 1/2 PLUG COVERS BEARING 2 1/2" CLEATS 16"	2 1/2 PLUG COVERS BEARING 2 1/2" CLEATS 16"		
HATCH COVERS	Material	2 1/8" SOLID WOOD COVERS.	FITTED F & A.	3" BEARING ✓	2 1/8" SOLID WOOD COVERS.	FITTED F & A.	3" BEARING ✓	2 1/8" SOLID WOOD COVERS.	FITTED F & A.	3" BEARING ✓	2 1/8" SOLID WOOD COVERS.	FITTED F & A.	3" BEARING ✓	2 1/8" SOLID WOOD COVERS.	
	Thickness	2 1/8"	2 1/8"	2 1/8"	2 1/8"	2 1/8"	2 1/8"	2 1/8"	2 1/8"	2 1/8"	2 1/8"	2 1/8"	2 1/8"	2 1/8"	
	How fitted	2 1/8"	2 1/8"	2 1/8"	2 1/8"	2 1/8"	2 1/8"	2 1/8"	2 1/8"	2 1/8"	2 1/8"	2 1/8"	2 1/8"	2 1/8"	
	Bearing Surface	2 1/8"	2 1/8"	2 1/8"	2 1/8"	2 1/8"	2 1/8"	2 1/8"	2 1/8"	2 1/8"	2 1/8"	2 1/8"	2 1/8"	2 1/8"	
Spacing of Cleats	24" ✓	24" ✓	24" ✓	24" ✓	24" ✓	24" ✓	24" ✓	24" ✓	24" ✓	24" ✓	24" ✓	24" ✓	24" ✓	24" ✓	
Number of Tarpaulins	2	2	2	2	2	2	2	3	3	3	3	3	3	3	

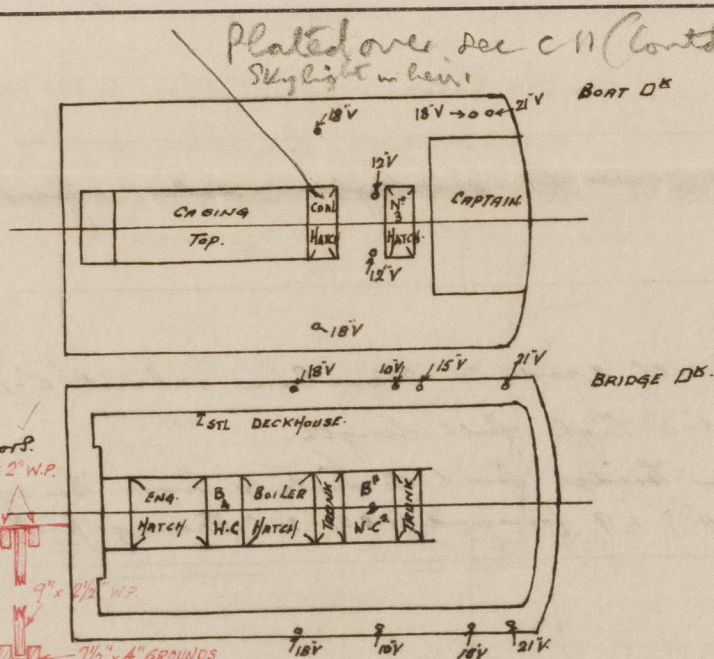
*Are wood fore and afters steel shod at all bearing surfaces? ✓

Are battens and wedges efficient and in good condition? YES.

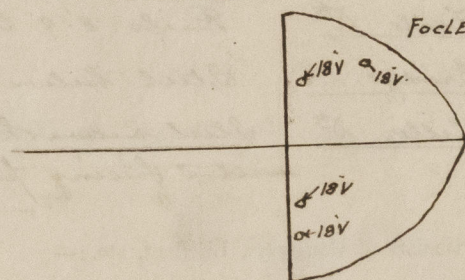
Are tarpaulins in good condition and in accordance with rule requirements? YES.

Are lashings provided in accordance with rule requirements? YES.

Particulars of any special features :—



The openings in Fore Hatch
are 1 (P25) 5'-6" x 3'-9" with 9" Sill
& 1 on Lth Line 5'-6" x 3'-1" with 9" Sill.
closed with shifting boards
fitted in channels welded
to bulkhead.



The openings in Bridge Front
 L^{ts} are 5'-6" x 3'-9" with 12" Sills
 & closed with Linged Steel W.T. Doors.
 Wood L^{ts} (P&S) in Bridge Space
 as indicated on sketch, with
 tonnage openings, fitted with
 lifting boards in accordance
 with approved plan.

The fittings and appliances are in accordance with the particulars shown on this form (or as now modified) and are in good condition.