

GOVT. COPY ISSUED

22 FEB 1954

NO. 3264.

29 SEP 1953

44185

Rpt. C.11. OWNERS' C.11 ISSUED

22 FEB 1954

Index No.
(For London Office only.)

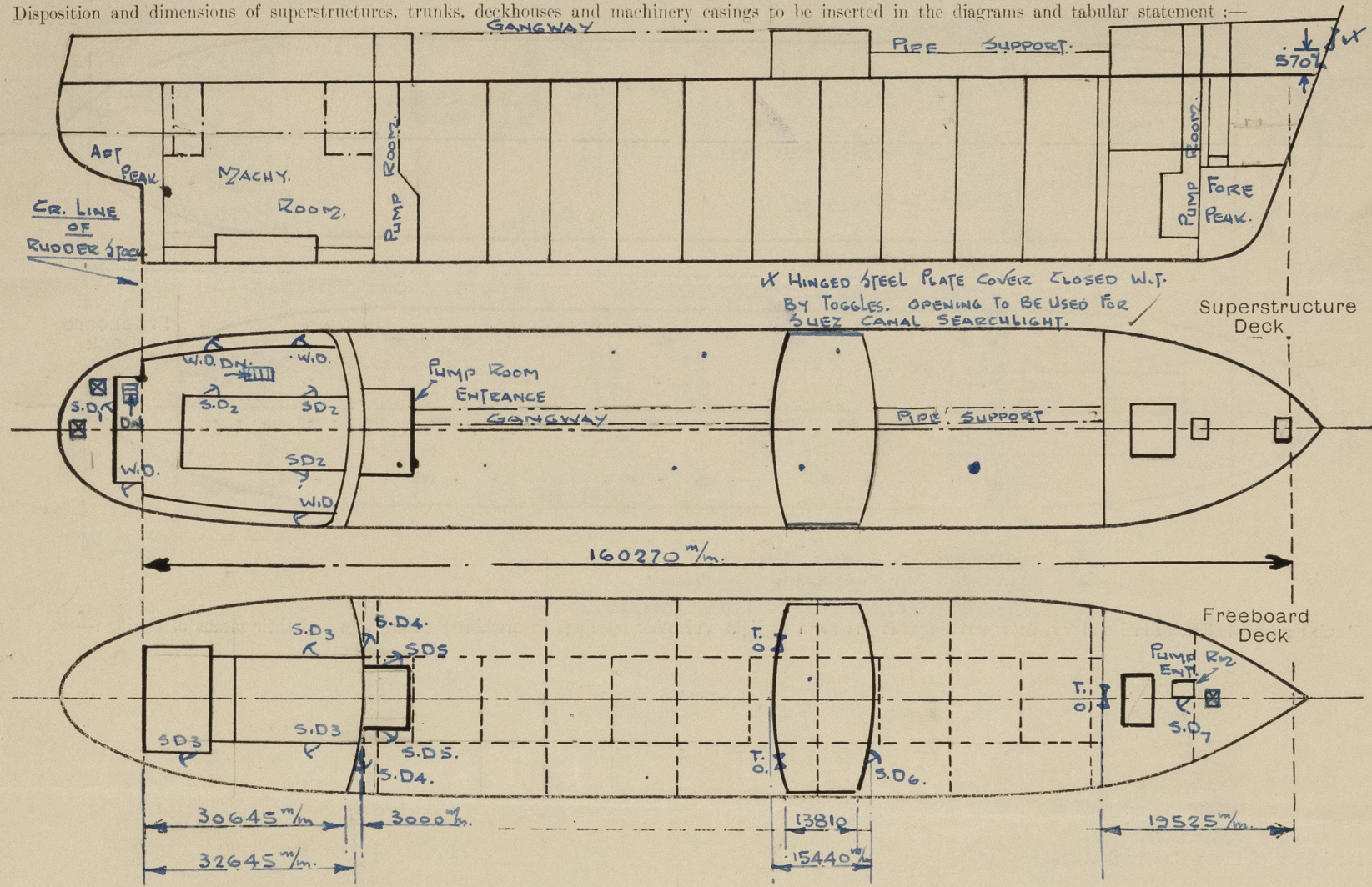
Lloyd's Register of Shipping.

SURVEYS FOR FREEBOARD.

(CONDITIONS OF ASSIGNMENT.)

Ship's Name t/t "SAXONSKY"Port of Survey Malmö.Official Number ---Surveyor's Signature James YoungNationality and Port of Registry Liberian, Monrovia.Date of Survey Whilst Building.

Disposition and dimensions of superstructures, trunks, deckhouses and machinery casings to be inserted in the diagrams and tabular statement:—



Particulars of Superstructures, Trunks, Casings, Deckhouses.

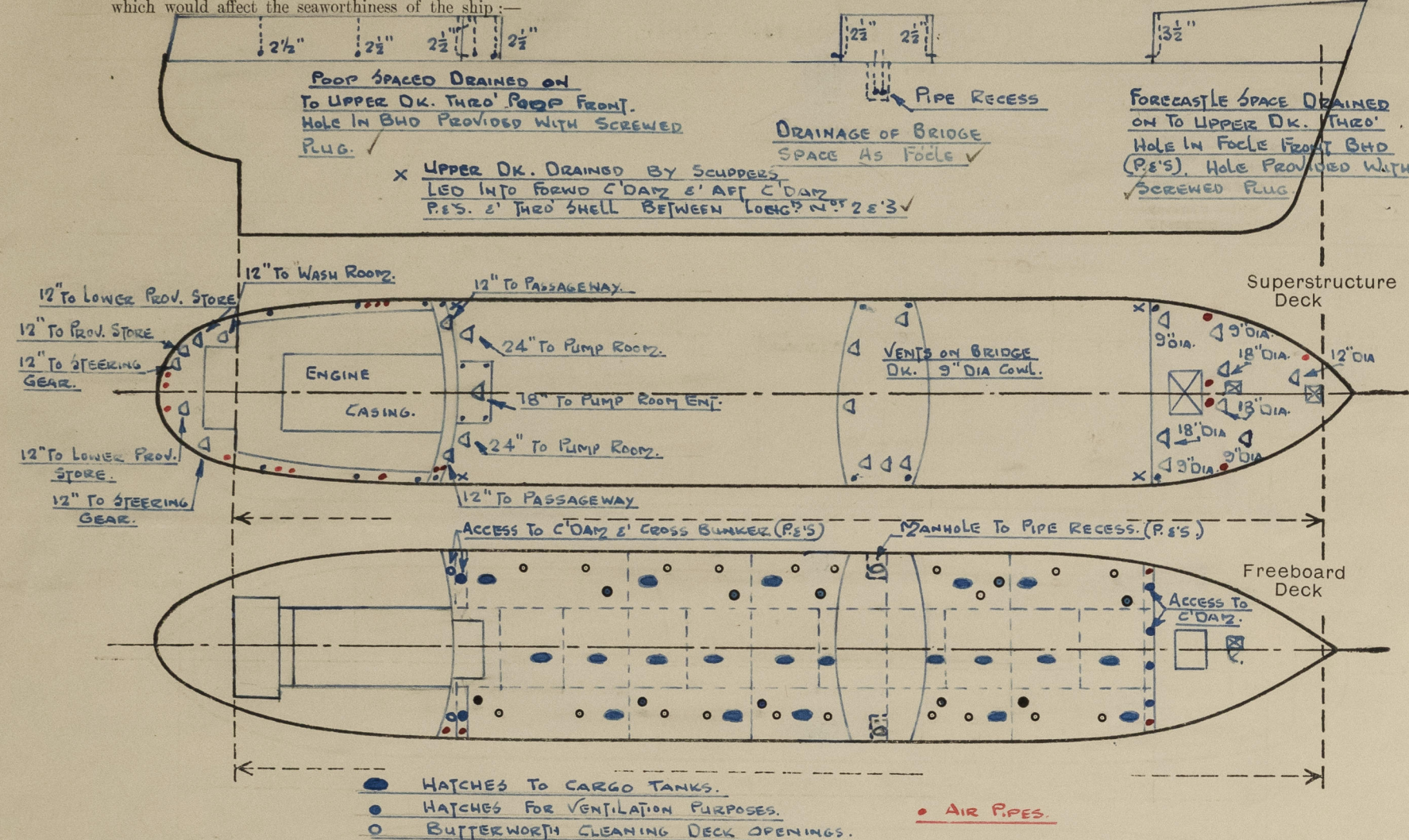
	Coaming	Plating	Stiffeners	Spacing	End Attachments of Stiffeners	Size of Openings	Height of Sills	Height of Casings
Poop Bulkhead55" ✓	10x3x.52" ✓	800 ✓	Riv. at top Weld. at bot. ✓	1530x640	640 ✓	2430 mm.
Raised Quarter Deck Bulkhead ...		-	-	-	-	-	-	-
Bridge, After Bulkhead50" ✓	5x3x.42" ✓	800 ✓	Bkt. at top ✓	1270x940	580 ✓	2390 mm.
Bridge, Forward Bulkhead58" ✓	10x3x.45" ✓	800 ✓	Bkt. top & bot.	1520x940	470 ✓	2390 mm.
Forecastle Bulkhead36" ✓	120x80x11mm ✓	800 ✓	Riv. at top ✓	1580x1250	430 ✓	2310 mm.
Trunk, After Main Pump Room55" ✓	250x90x15mm ✓	800 ✓	Riv. at top Weld. at bot. ✓	1530x700	660 ✓	2430 mm.
Trunk, Forward Pump Room Fwd. Exposed Machinery Casings on Freeboard or Raised Quarter Decks32" ✓	Corr. bulkhead	-	-	1610x650	330 ✓	2310 mm.
Exposed Machinery Casings on Superstructure Decks ...								
Machinery Casings within Superstructures, not fitted with Class I Closing Appliances ...								
Deckhouses on Flush Deck Ships ...								

Particulars of Closing Appliances (state if capable of being manipulated from both sides).

Poop Bulkhead ...	W.T. Steel Doors capable of being manipulated from both sides. ✓
Raised Quarter Deck Bulkhead ...	---
Bridge, After Bulkhead ...	Tonnage openings closed by wood boards 65 mm. thick in welded channels. ✓
Bridge, Forward Bulkhead ...	W.T. steel door capable of being manipulated from both sides. ✓
Forecastle Bulkhead ...	Tonnage opening closed by wood boards 85 mm. thick in welded channels and steel plate fitted by hook bolts. ✓
Exposed Machinery Casings on Superstructure Decks ...	W.T. steel door capable of being manipulated from both sides. ✓
Machinery Casings within Superstructures not fitted with Class I Closing Appliances ...	
Pump Room Forward. Deckhouses on Flush Deck Ships ...	W.T. steel door capable of being manipulated from both sides. ✓

PARTICULARS OF PROTECTION TO OPENINGS, ETC.

The following diagrams should be used to indicate the positions of cargo and coaling hatchways, gangway, cargo and coaling ports, ventilators, companionways, etc., which would affect the seaworthiness of the ship.



Particulars of fidley, funnel and ventilator coamings, engine room skylight and other openings in machinery casing tops and their means of closing :-

Ventilators, funnel and engine room skylight are of strong construction. ✓
Fidley openings fitted with strong steel hinged covers. ✓

Particulars of Flush Bunker Scuttles :-

NONE. ✓

Particulars of Companionways :-

Entrance to crews' accommodation thro' steel deckhouse.

W.D. = Wood Door, Sill = 450 mm.	✓
S.D.1 = Steel door, " = 460 mm.	✓
S.D.2 = Steel door, " = 400 mm.	✓
S.D.3 = Steel door, " = 350 mm.	✓
S.D.4 = Steel door, " = 640 mm.	✓
S.D.5 = Steel door, " = 660 mm.	✓
S.D.6 = Steel door, " = 470 mm.	✓
S.D.7 = Steel door, " = 330 mm.	✓

All doors capable of being manipulated from both sides. ✓

Particulars of Ventilators in exposed positions on freeboard and superstructure decks :-

All ventilators efficiently constructed. ✓
Coamings are 915 mm. high or above and supplied by efficient means of closing. ✓
Coamings over 915 mm. high are efficiently supported. ✓

Particulars of Air Pipes in exposed positions on freeboard, raised quarter, or superstructure decks :-

All air pipes are of gooseneck type and are 460 mm. high, or above, on superstructure decks and provided with means of closing. ✓
Air pipes on upper deck to cofferdams are 910 mm. high and provided with screw down closing appliances. ✓

Particulars of Gangway Cargo and Coaling Ports :-

None.

Particulars of Scuppers and Sanitary Discharge Pipes :-

Scuppers and sanitary discharges from deckhouse on poop carried down and thro' shell in engine room and fitted with screw down non-return valves in an easy accessible position. ✓
Scuppers and sanitary discharges from accommodation in poop carried down and thro' shell in engine room and fitted with screw down non-return valves in an easy accessible position. ✓
Scuppers & sanitary discharges from accommodation in Midship Deckhouse led into cofferdam built in No. 3 side tank p. & s. and thro' shell above L.W.L. ✓

Particulars of Side Scuttles :-

Side scuttles in tween deck aft are of substantial construction and fitted with hinged deadlights. ✓

Vertical distance of Sill of lowest Side Scuttle above top of keel About 44135 mm.

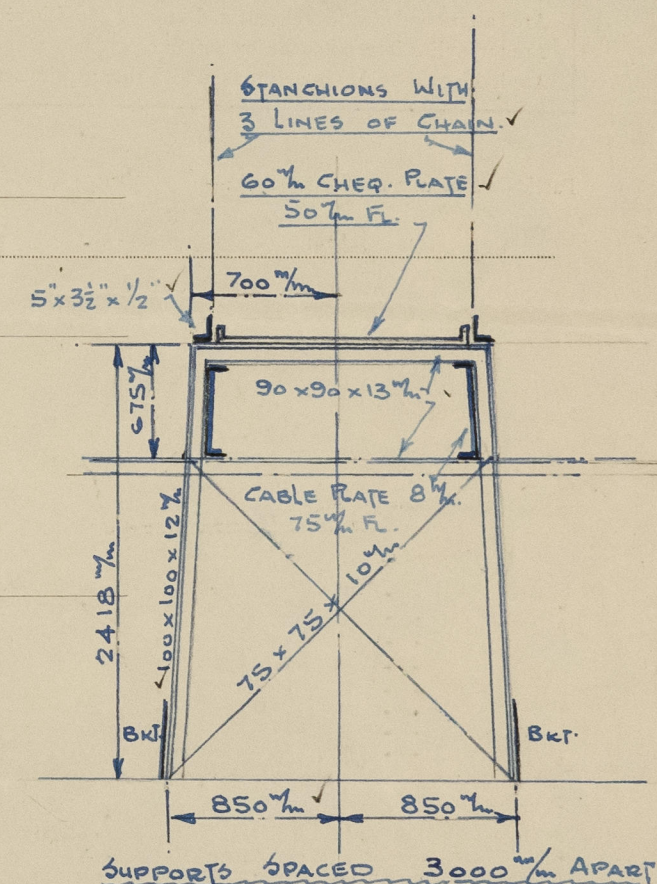
Particulars of Guard Rails :-

Guard rails fitted on Forecastle deck height 1050 mm. (3 rails) ✓
" stanchions fitted on upper deck " 1060 mm. ✓
" rails fitted on poop deck " 1050 mm. (3 rails) ✓

✓ Chains fitted thro' stanchions fore and aft. ✓

Particulars of Gangways, Lifelines, etc. :-

See sketch. ✓



Particulars of Freeing Arrangements.

	Length of Bulwark	Height of Bulwark	Size of Freeing Ports	Number each side	Area each side	Rule area each side
After Well ...						
Forward Well ...						

State position of each freeing port ... { After Well :-
(F. and A. position and height above deck edge) { Forward Well :-

State whether the freeing ports are fitted with shutters, bars, or rails, and give particulars of such :-

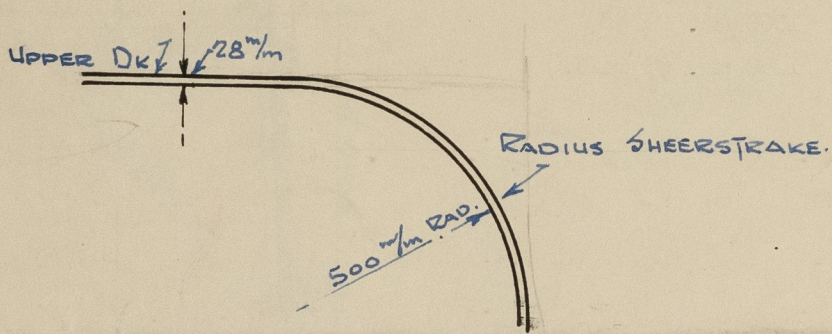
Additional area where sheer is less than standard.

PARTICULARS OF PROTECTION TO OPENINGS, ETC.

HATCHWAYS ON FREEBOARD AND SUPERSTRUCTURE DECKS.											
Upper deck						Forecastle deck.					
Description of Hatchway	Cargo oil	Dry cargo	Access	Access to	Butter-	Vents. to	To fwd.	To focle.	To pump	Dry cargo	
	Hatches	Hatch	to c'dams	bunkers	world	world	world	world	world	world	
Dimensions of Hatchway	1465x	3425x	610 mm.	760 mm.	317.5mm.	590mm.	1000x	1080x	630x	3425x	
	1070	4346	diam.	diam.	diam.	diam.	800	1280	530	4346	
COAMINGS	Height above Deck	815 mm.✓	230 mm.✓	610 mm.✓	655 mm.✓	25 mm.✓	210mm✓	920 mm.✓	920 mm.✓	610 mm.✓	825 mm.✓
	Thickness	.40"	.40"✓	10 mm.✓	10 mm.	Doubling	12.5✓	7 mm.✓	10 mm.✓	8 mm.✓	.44"✓
	Stiffeners	75x50x10	.5mm.✓	=	=	=	=	=	=	=	150x75x11
	Brackets, Stays										2 bkt. side fore side 1 bkt. p & s.
HATCH BEAMS	Number		1								
	Spacing		1712mm.✓								
	Scantling and Sketch										
	Bearing Surface		75mm.✓								
FORE AND AFTERS	Number										
	Spacing										
	Unsupported Lengths										
	Scantling* and Sketch										
HATCH COVERS	Material	Steel	Wood	Steel	Steel	Steel	Steel	Steel	Steel	Steel	Steel
	Thickness	.46"	70mm.	12.5mm.	12.5mm.	15mm.	15 mm.	5 mm.	8 mm.	8 mm.	.36"✓
	How fitted	Hinged	H. & A.	Hinged OT.	Hinged	Bolted	Hinged	Hinged	Hinged	Hinged	Stiffened
	Bearing Surface	O.T.✓	75 mm.✓	✓	O.T.✓	O.T.✓	O.T.✓	W.T.✓	W.T.✓	W.T.✓	W.T.✓
Spacing of Cleats	12 toggl.	521mm✓	5 toggl.	6 toggl.	12 bolts	5 toggl.	2 toggl.	6 toggl.	4 toggl.	38 toggl.	
Number of Taraulins...		1									
<p>*Are wood fore and afters steel shod at all bearing surfaces?</p> <p>Are battens and wedges efficient and in good condition?</p> <p>Are tarpaulins in good condition and in accordance with rule requirements?</p> <p>Are lashings provided in accordance with rule requirements?</p> <p>✓ Stiffeners on hatch cover 8"x3"x.44 O.A.✓</p>											

Particulars of any special features :—

Electrically welded. Longitudinally framed.



Poop deck

To prov. store.	To aft store.	
1020x1020	1020x695	
10 mm.	10 mm.	
400 mm. high	150 mm.	
Cover: Steel.	Steel.	
8 mm.	8 mm.	
Closed W.T.	Closed W.T.	
8 toggl.	8 toggl.	
	Hatch remains closed while vessel is at sea.	

Note:—

Opening cut in poop side plating for discharging rubbish.

Opening:— 550 mm. x 550 mm.

Height from upper deck to bottom of opening 850 mm.

Position:— Between frames "D" & "B".

Closed W.T. by strong hinged steel cover 11.5 mm. thick and stiffened. ✓



© 2021

Lloyd's Register Foundation