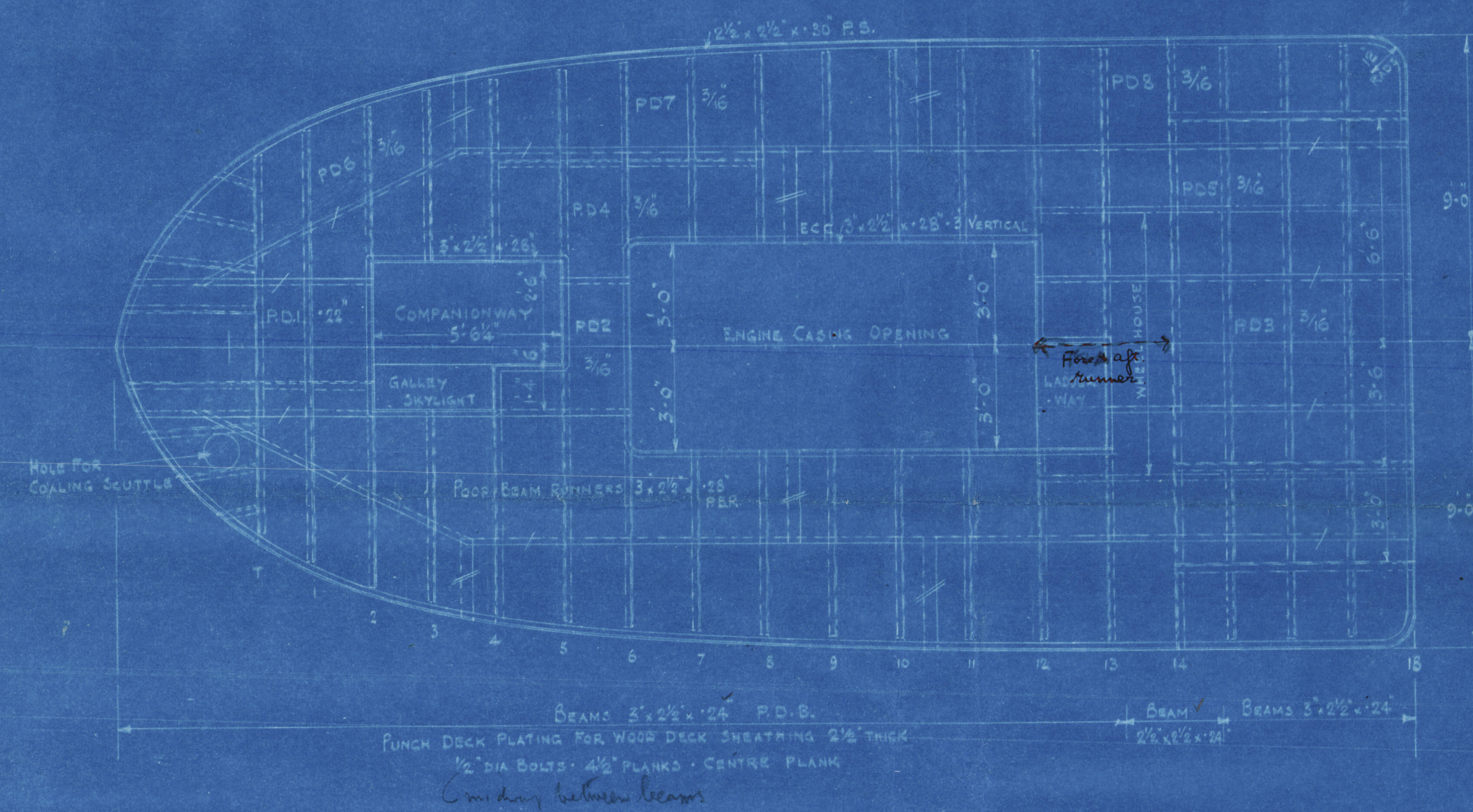
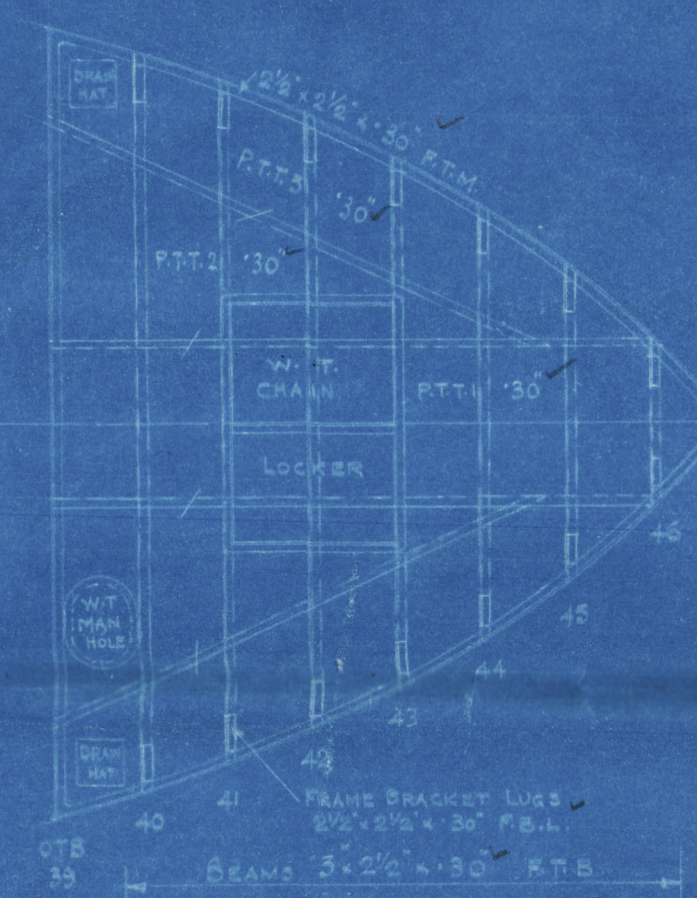


POOP DECK



FORE PEAK TANK TOP



4 FEB 1935

Approved J. L. A. for J. L.  
6-2-35

Equipment:-

$$\frac{90 \times 19 \times 8.75 \times 78}{100} = 112.2$$

$$\text{Pump} = \frac{34.4 \times 6.5 \times 19 \times 78}{150} = 21.2$$

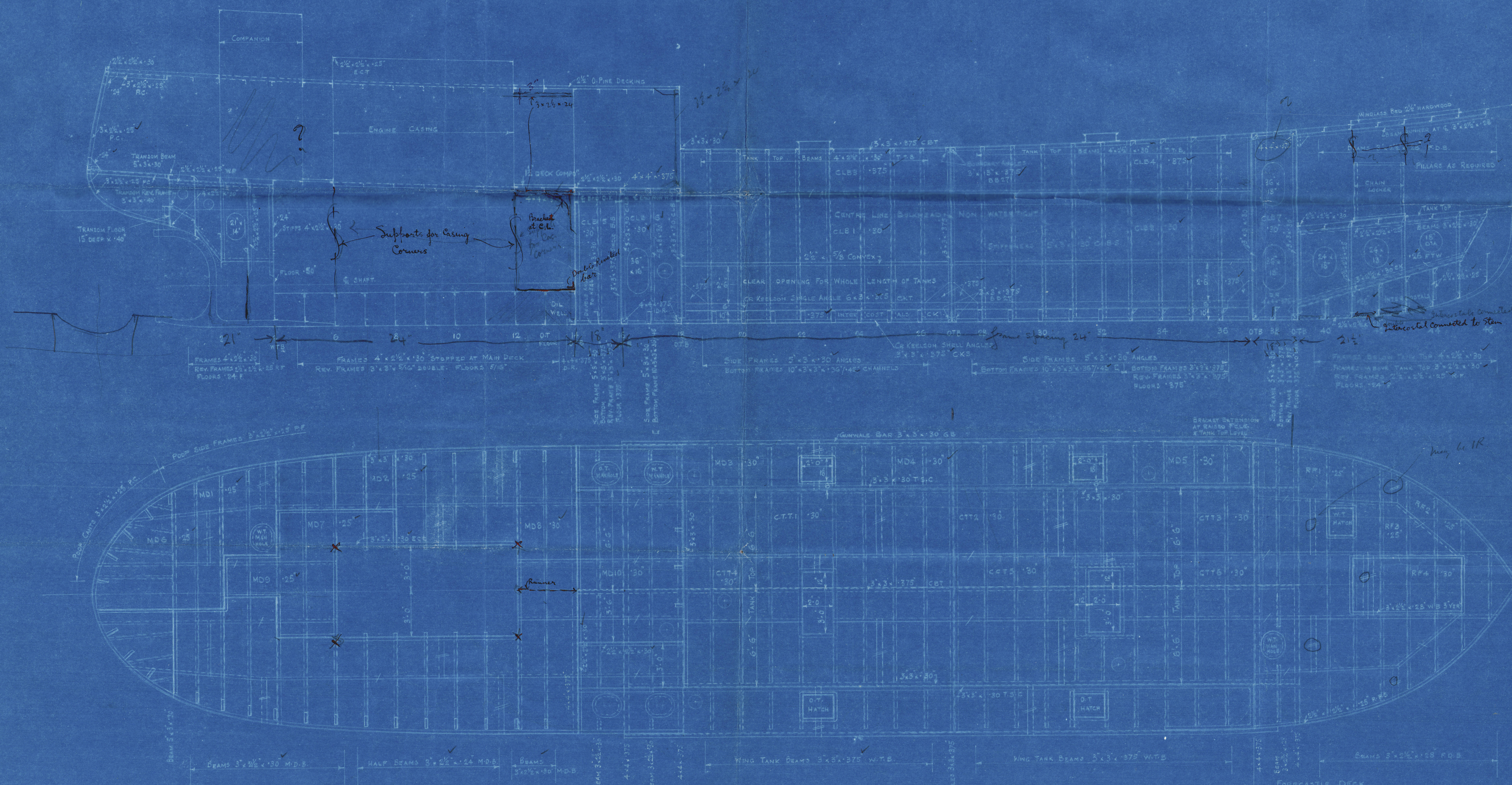
$$\text{Waste} = \frac{377 \times 13 \times 2.5 \times 78}{150} = 6$$

$$\text{Falls} = \frac{17 \times 19 \times 2.5 \times 78}{150} = 4$$

Equipment 150  
Grade Cd. 143

- 2 Bowers Each 5 Cuts (Stockless)
- 1 Stream 2 Cuts (Ex Stock)
- 60 fells 14/16" Steel Chain Cable
- 60 " 13/4" Steel Wire
- 60 " 1" Steel Wire

Approved per letter 21-2-35 J. L.



To class B-D \* Bulk Oil Carrier Coasting Service

S. 509

GENERAL STEELWORK ARRANGEMENT.

SCALE 1/4" = ONE FT

DIMS - 95'-0" OA, 90'-0" BP x 19'-0" MLD x 8'-9" MLD



005013-005019-0009



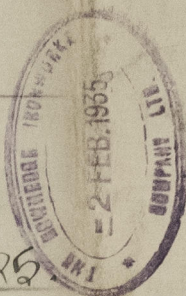
3  
9

Profile & Deck.

Showhedge Ironworks.

No 509.

L. D. 25.

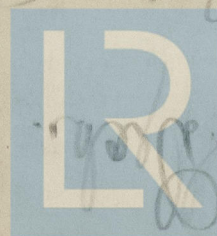


T.C. 27.2.55

BEN OLIVER.

RETAIN

Showhedge 509



© 2021

Lloyd's Register  
Foundation

005013-005019-0009