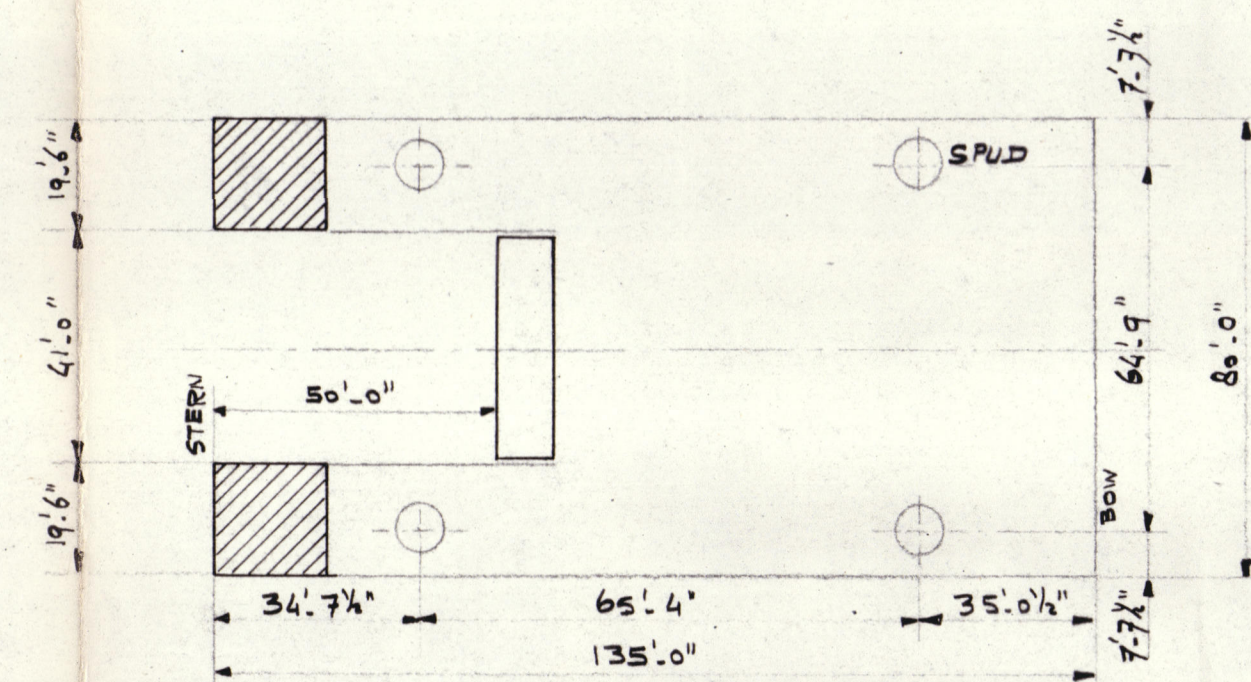
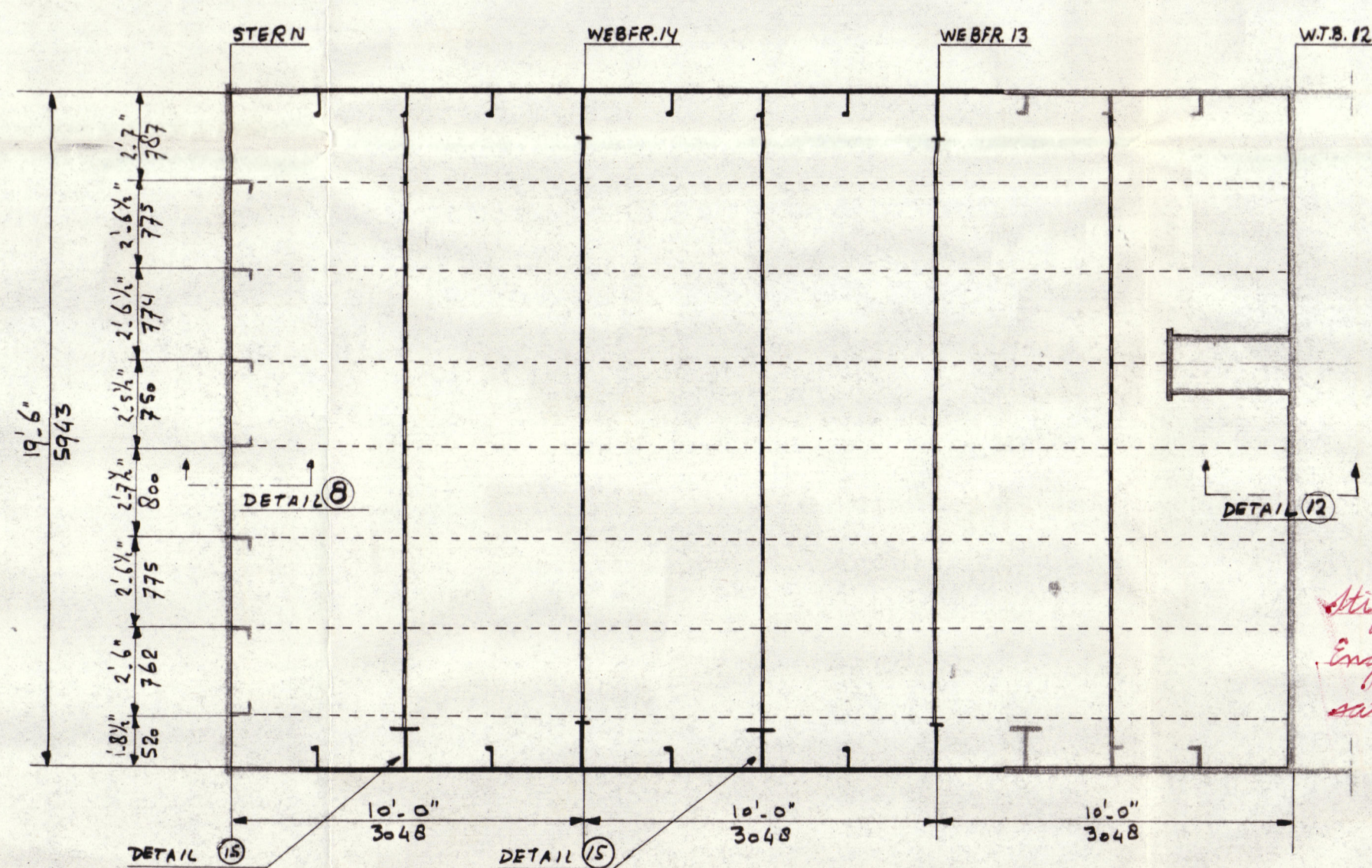


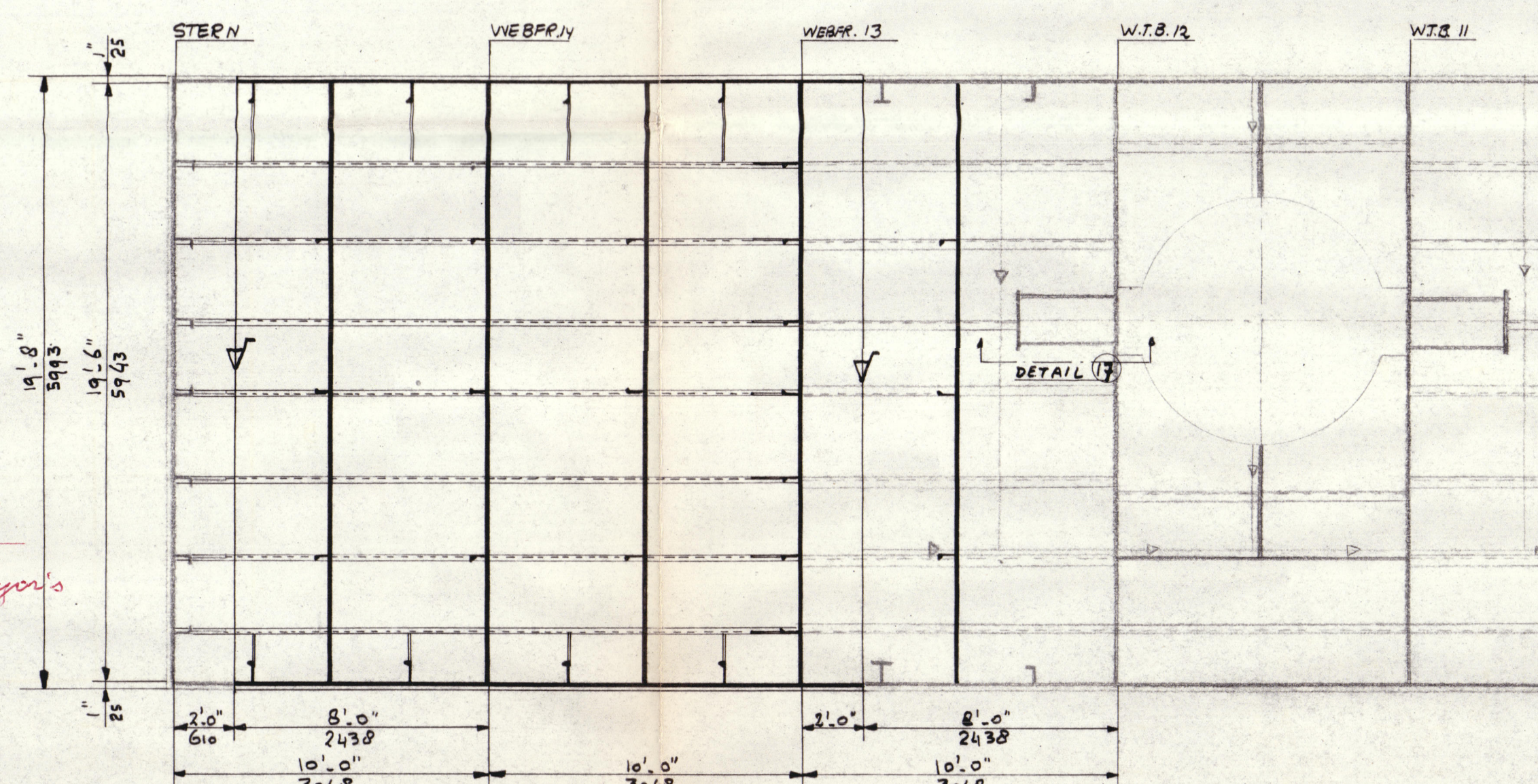
KEY PLAN



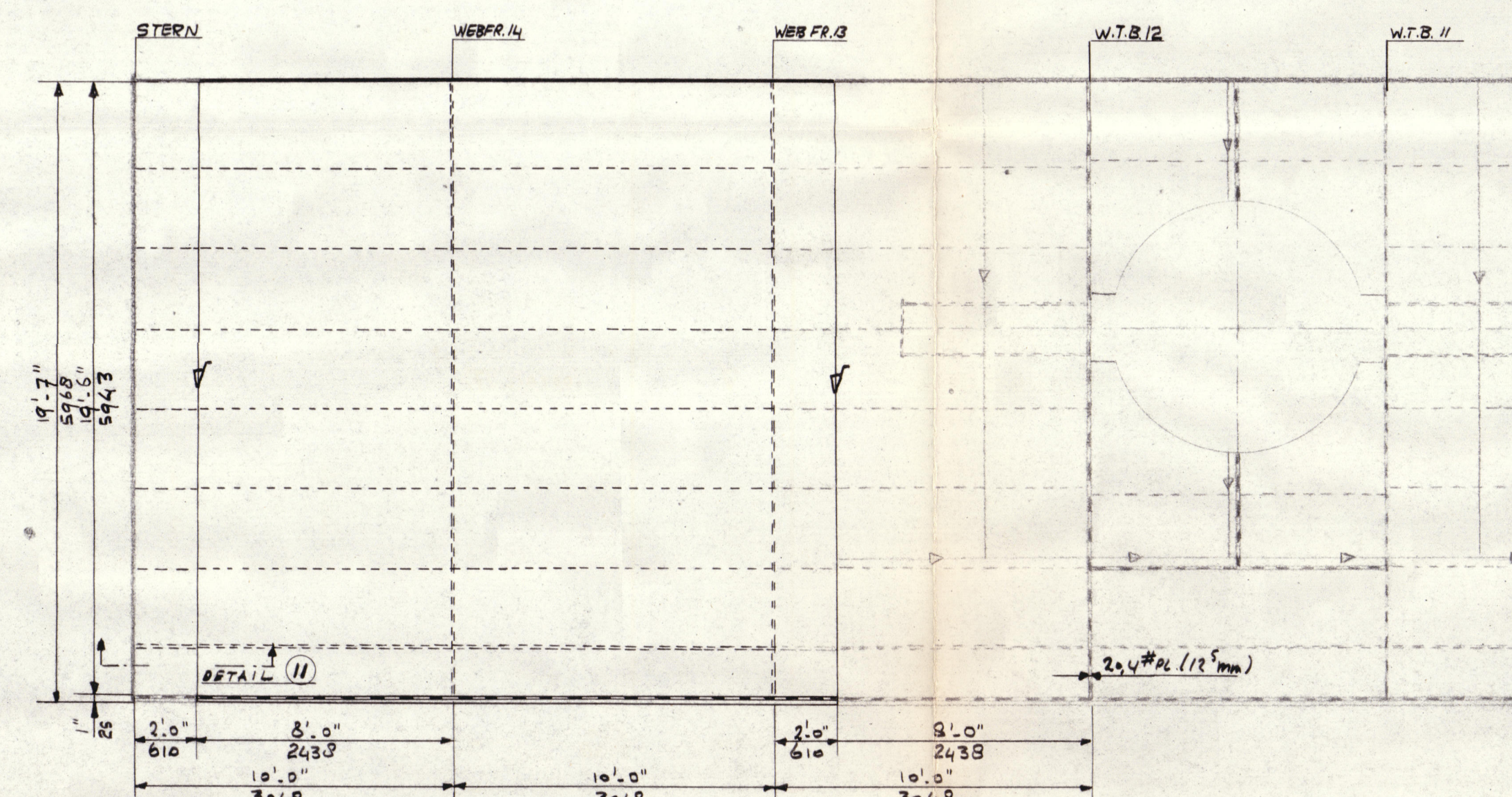
PLAN MACHINE FLOOR
P.S. SHOWN - S.B. SIMILAR TO OPP. HAND
PLATING 15.3# - 9.5mm



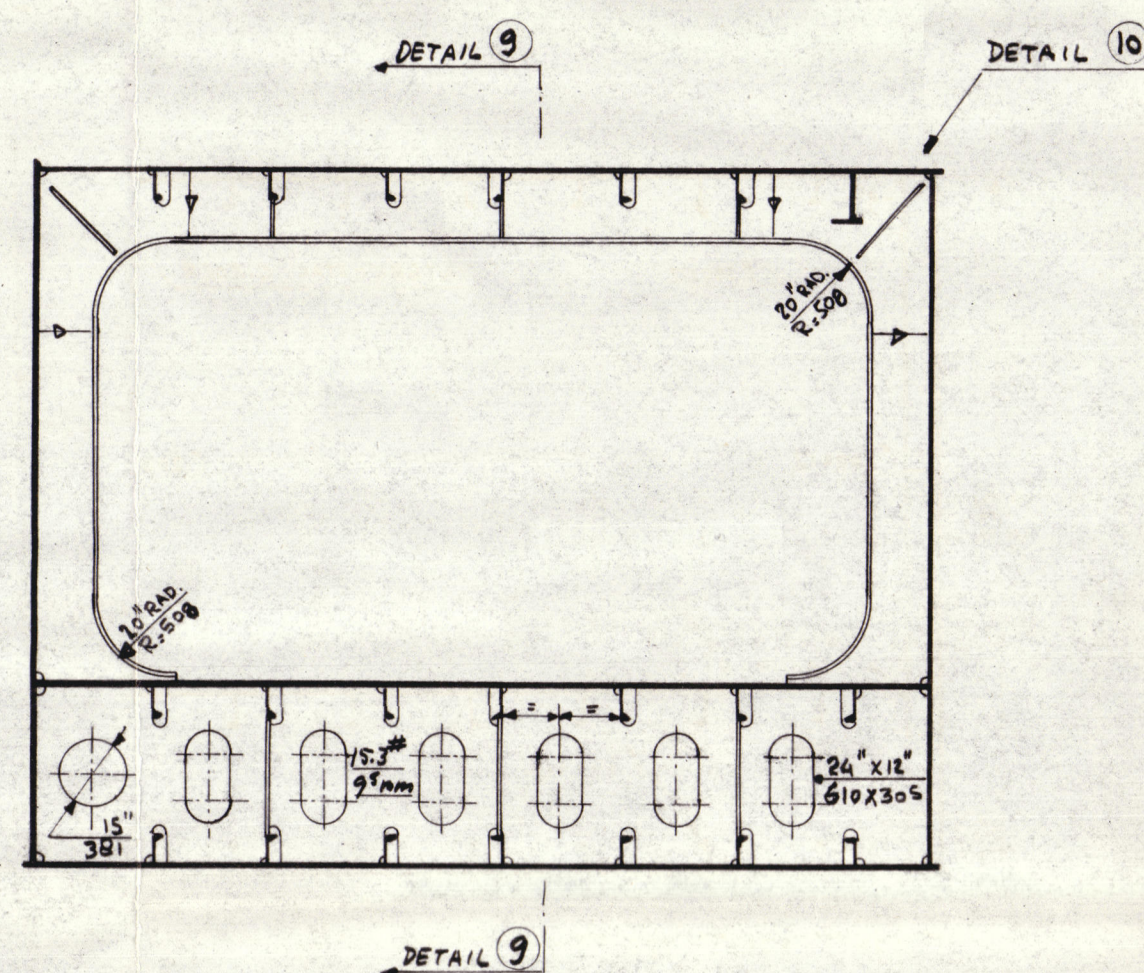
PLAN BOTTOM PLATING
P.S. SHOWN - S.B. SIMILAR TO OPP. HAND
PLATING 17.8# - 11mm



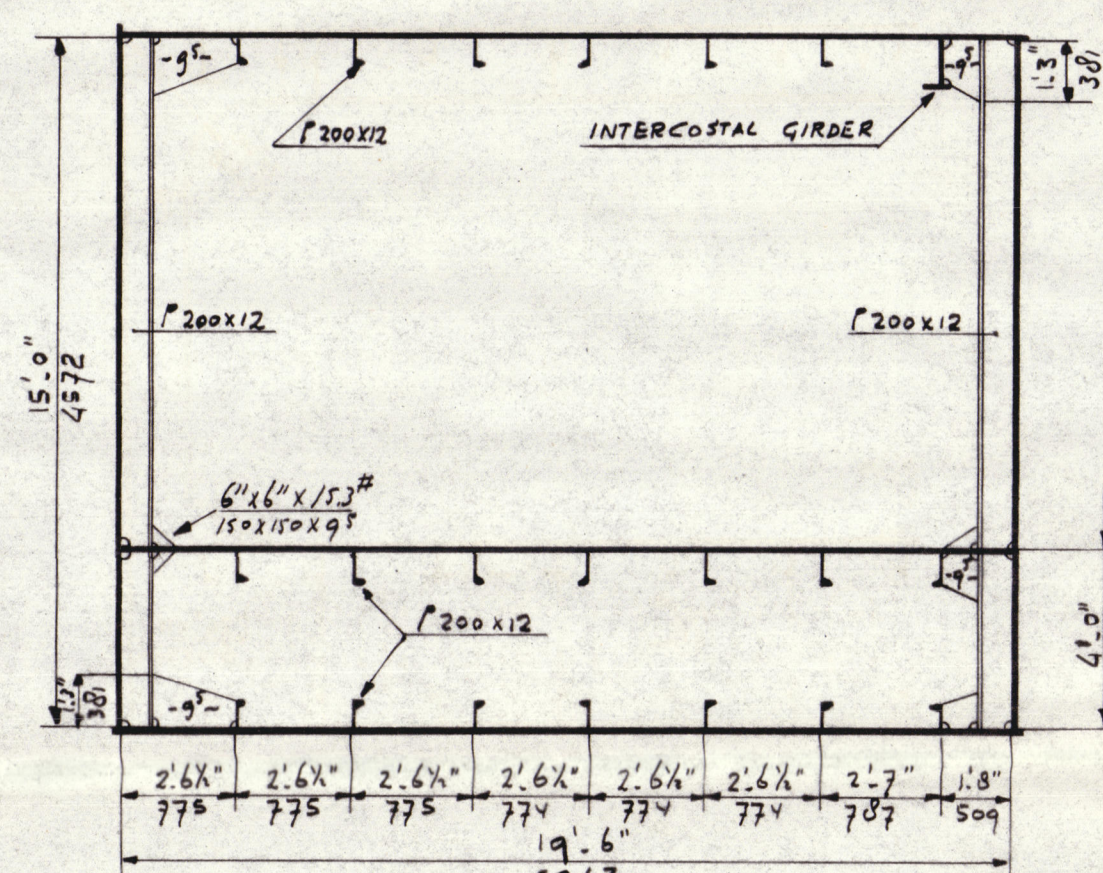
PLAN DECK PLATING
P.S. SHOWN - S.B. SIMILAR TO OPP. HAND
PLATING 15.3# - 9.5mm



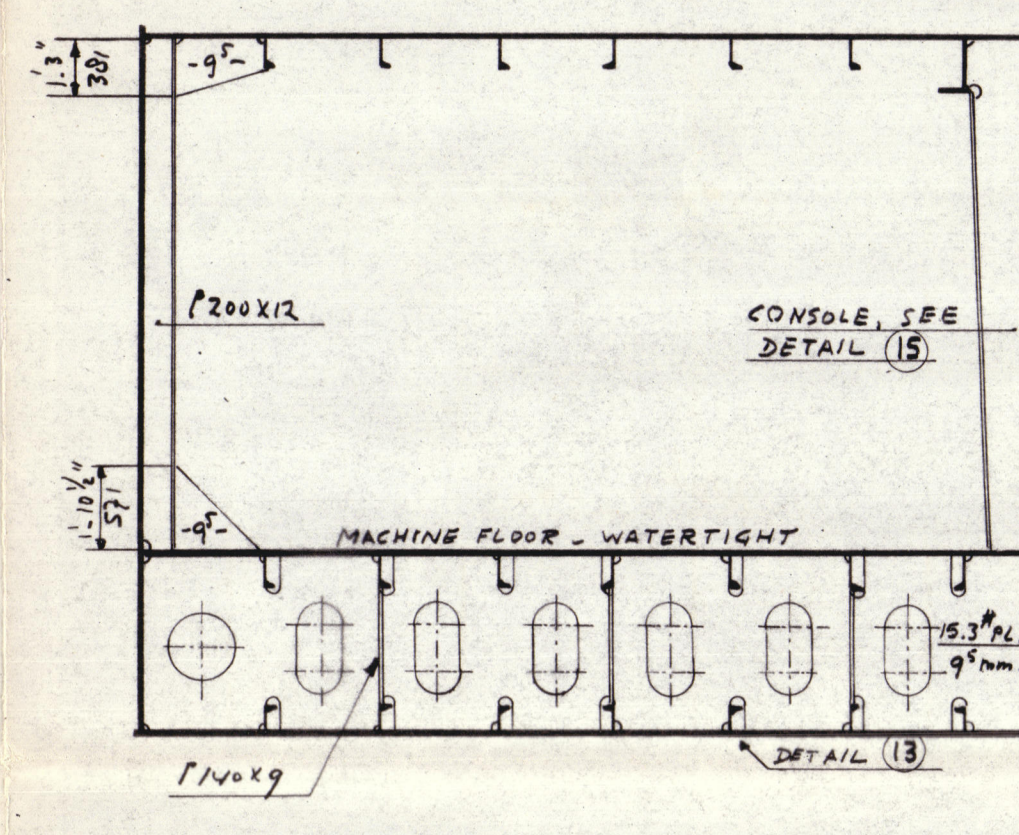
TRANSVERSE WEBFRAMES 13 AND 14
P.S. SHOWN - S.B. SIMILAR TO OPP. HAND



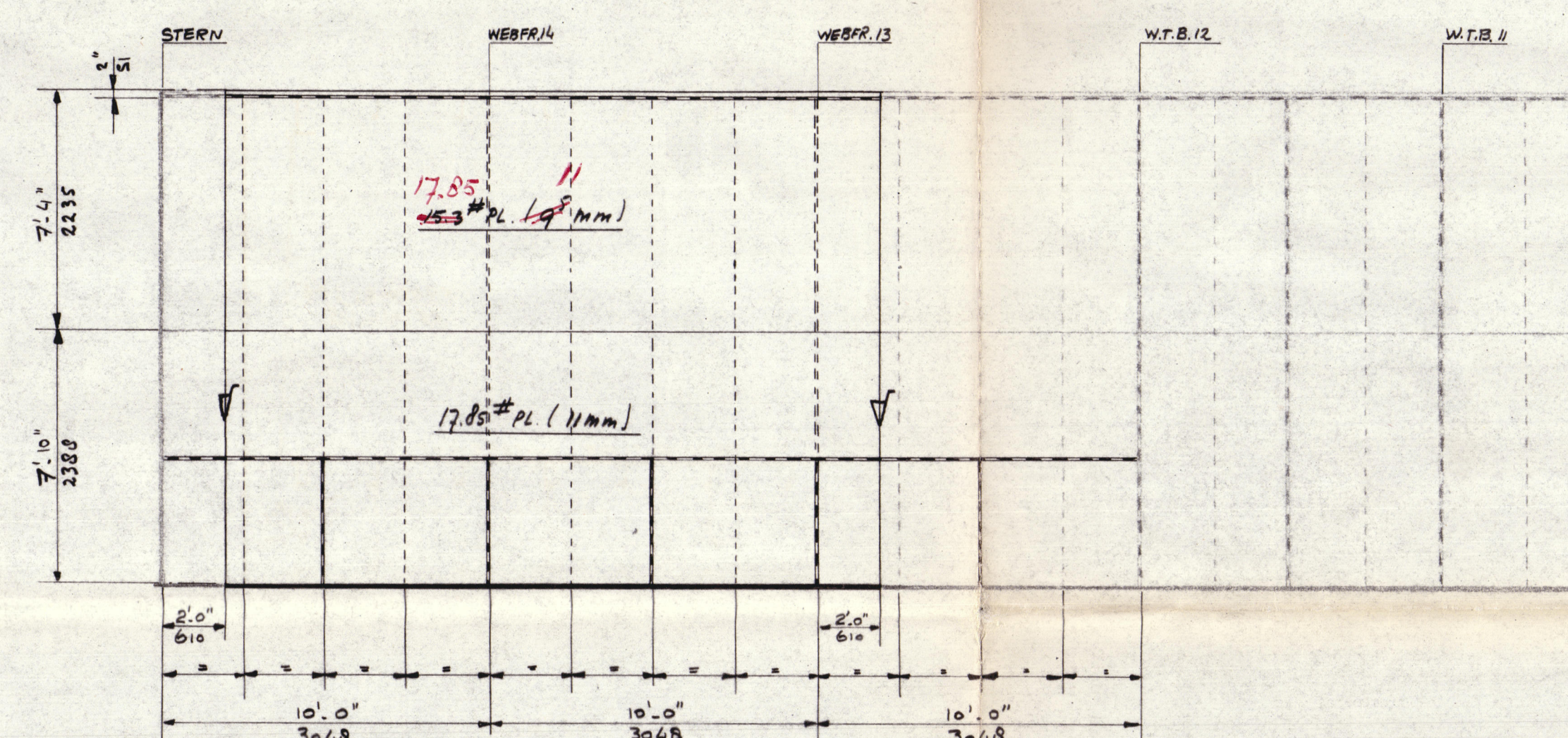
INTERMEDIATE FRAMES
P.S. SHOWN - S.B. SIMILAR TO OPP. HAND



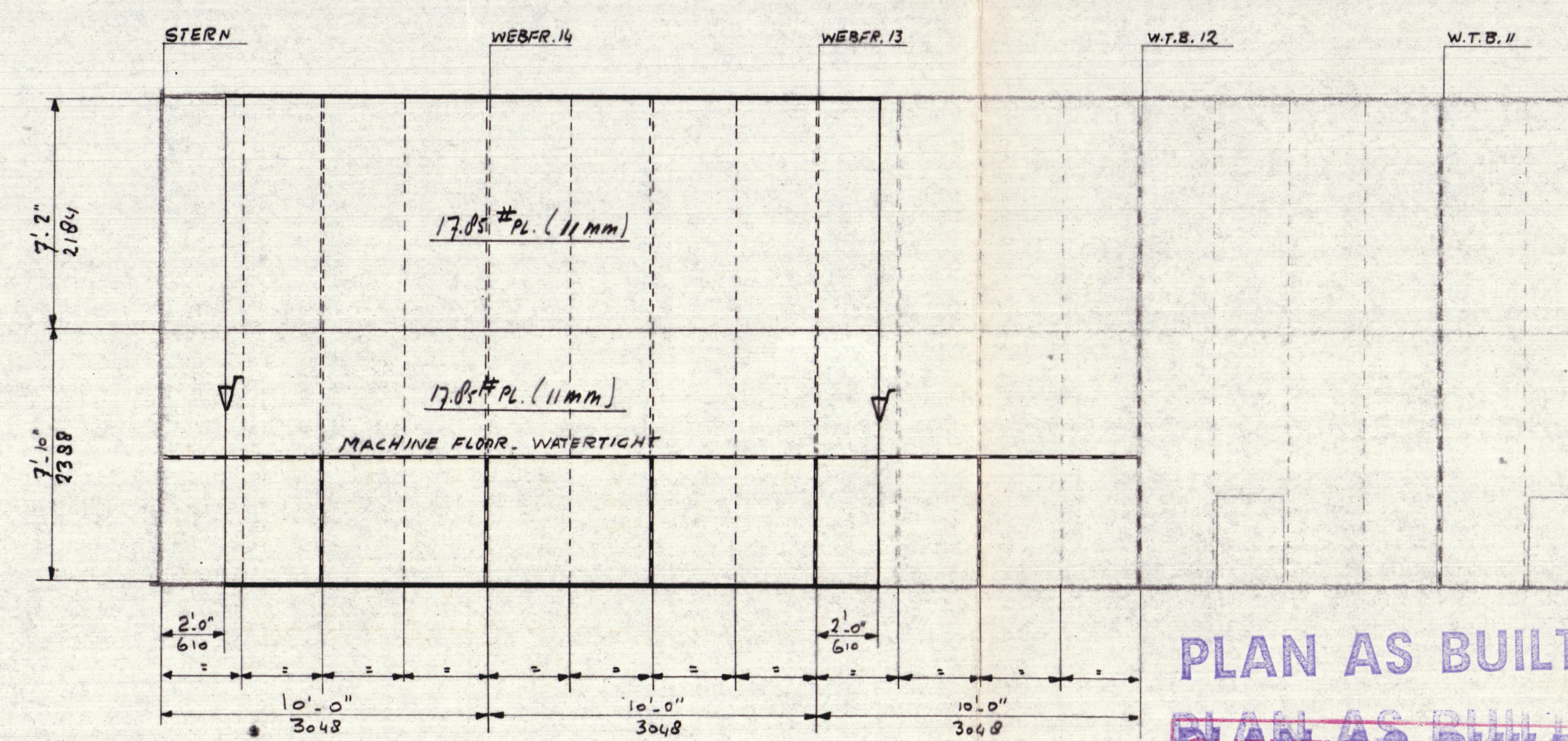
FRAME 13X AND 14X
P.S. SHOWN - S.B. SIMILAR TO OPP. HAND



SIDE SHELL PLATING
S.B. SHOWN - P.S. SIMILAR TO OPP. HAND



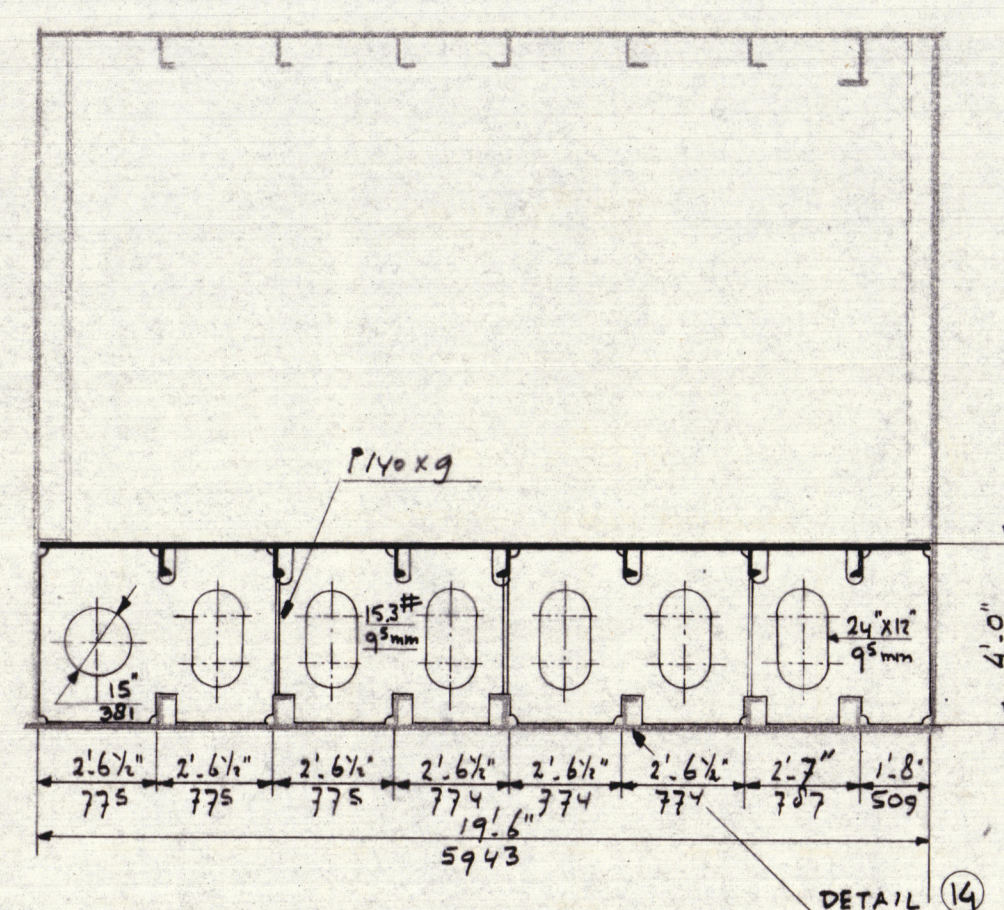
LONGITUDINAL W.T. BULKHEAD - 20' 6" OFF $\frac{1}{2}$
P.S. SHOWN - S.B. SIMILAR TO OPP. HAND



AT FRAME 13 PLAT BARS AND KNEES IN WAY OFF
ALL LONGITUDINAL BEAMS AND FRAMES.
NOTCHES TO BE OMITTED.

FOR DETAILS SEE DRAWING NR. 969 V. 9-S, REV. A.
FOR DETAILS OF MANHOLE IN MACH. FLOOR SEE DRAW. NR. 969 V. 10-S.

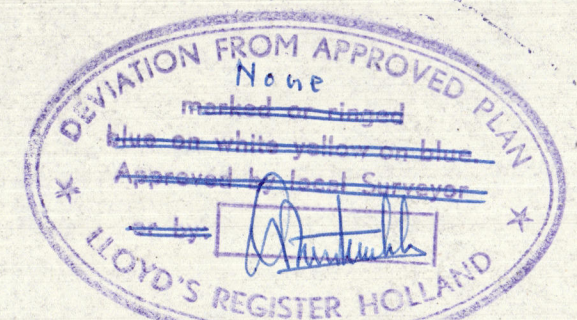
FRAME 12X
P.S. SHOWN - S.B. SIMILAR TO OPP. HAND



RETAIN

Signed London
OMC 5-1-61
8-1-61

PLAN AS BUILT
PLAN AS BUILT



HOLLAND SHIPBUILDING ASSOCIATION DRAWN BY INGENIEURSBUREAU VLIJGER N.V. AMSTERDAM - ROTTERDAM	
CONVERSION "TRITON" HF 0100/001 NAM/W/ROTTERDAM REPORT NO. 52343	
EXTENSION OF THE HULL	
SCALE 1:50 DATE: 1.12.1960 DR. BY: G.M. APPR.:	969V.7-S Boysen REV. A

PROJECT 969V