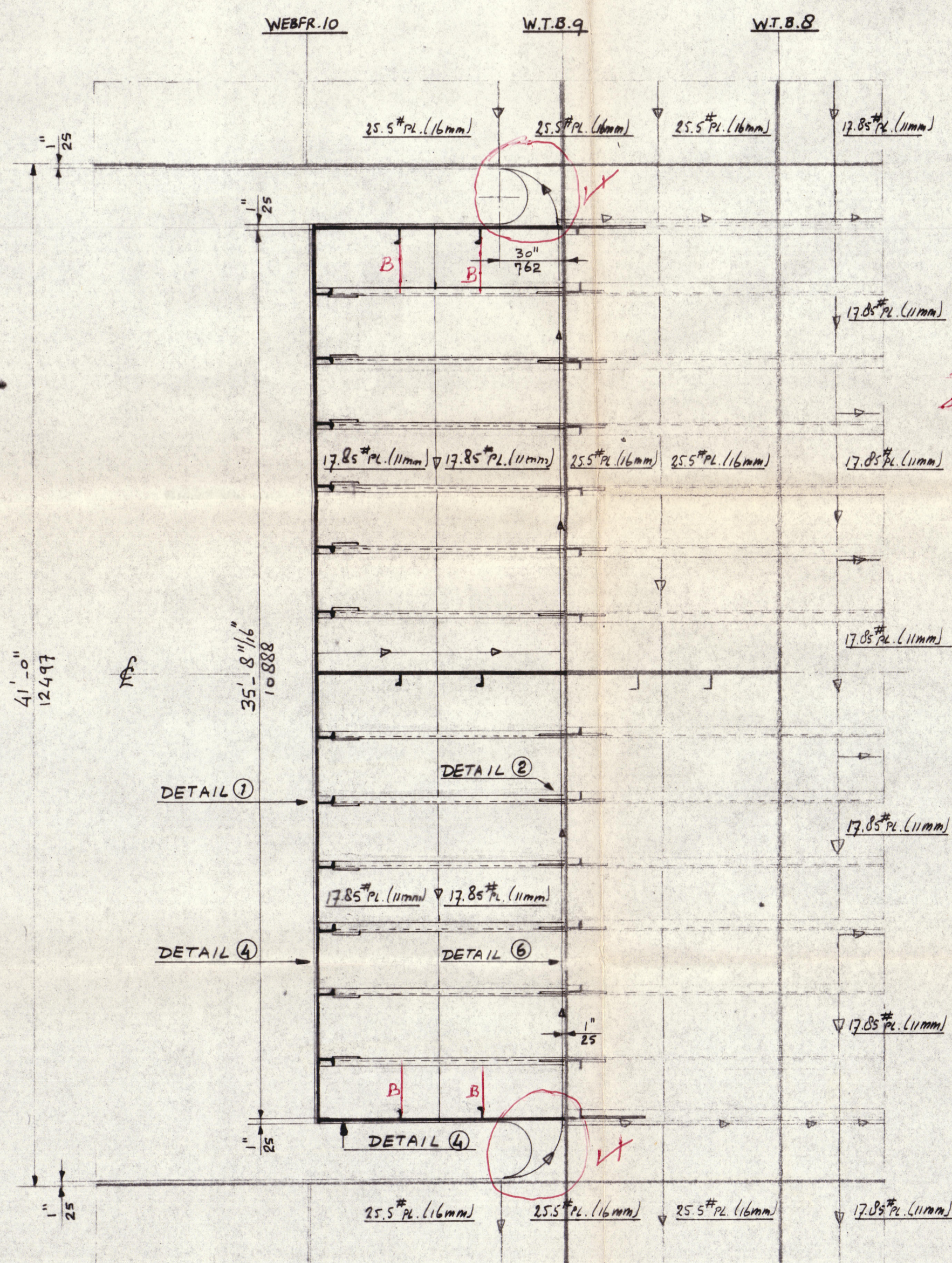


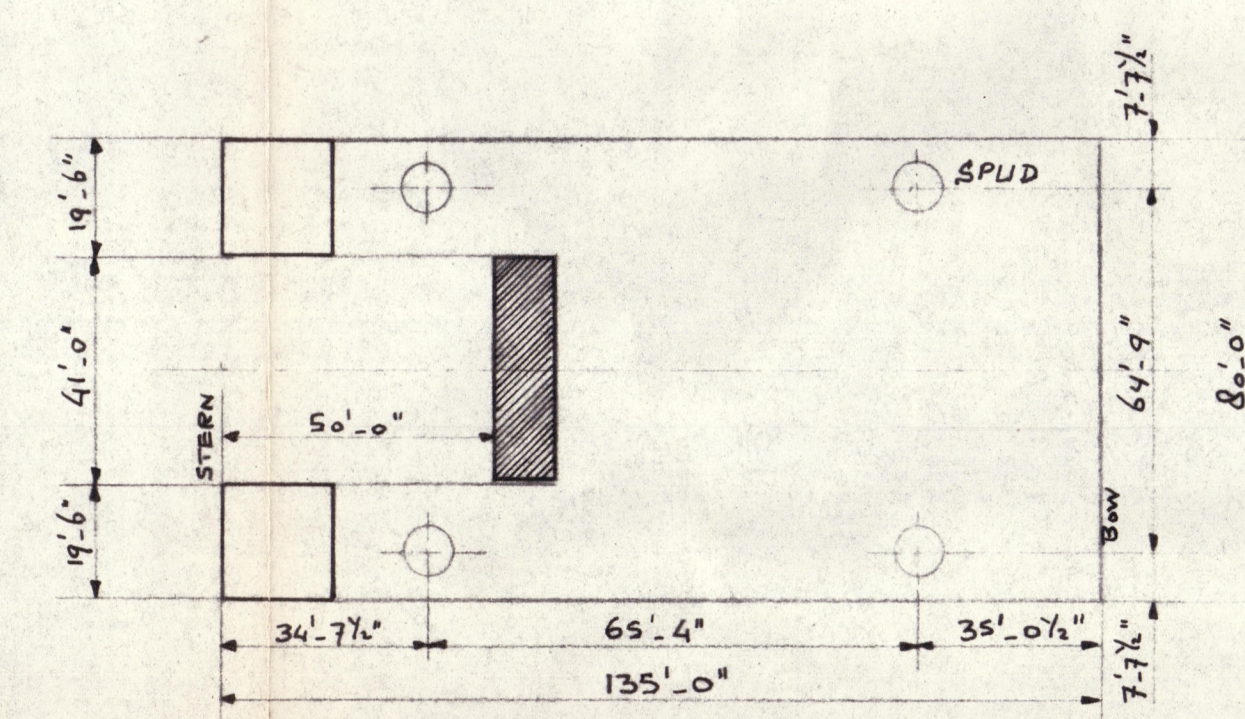
# PLAN BOTTOM PLATING



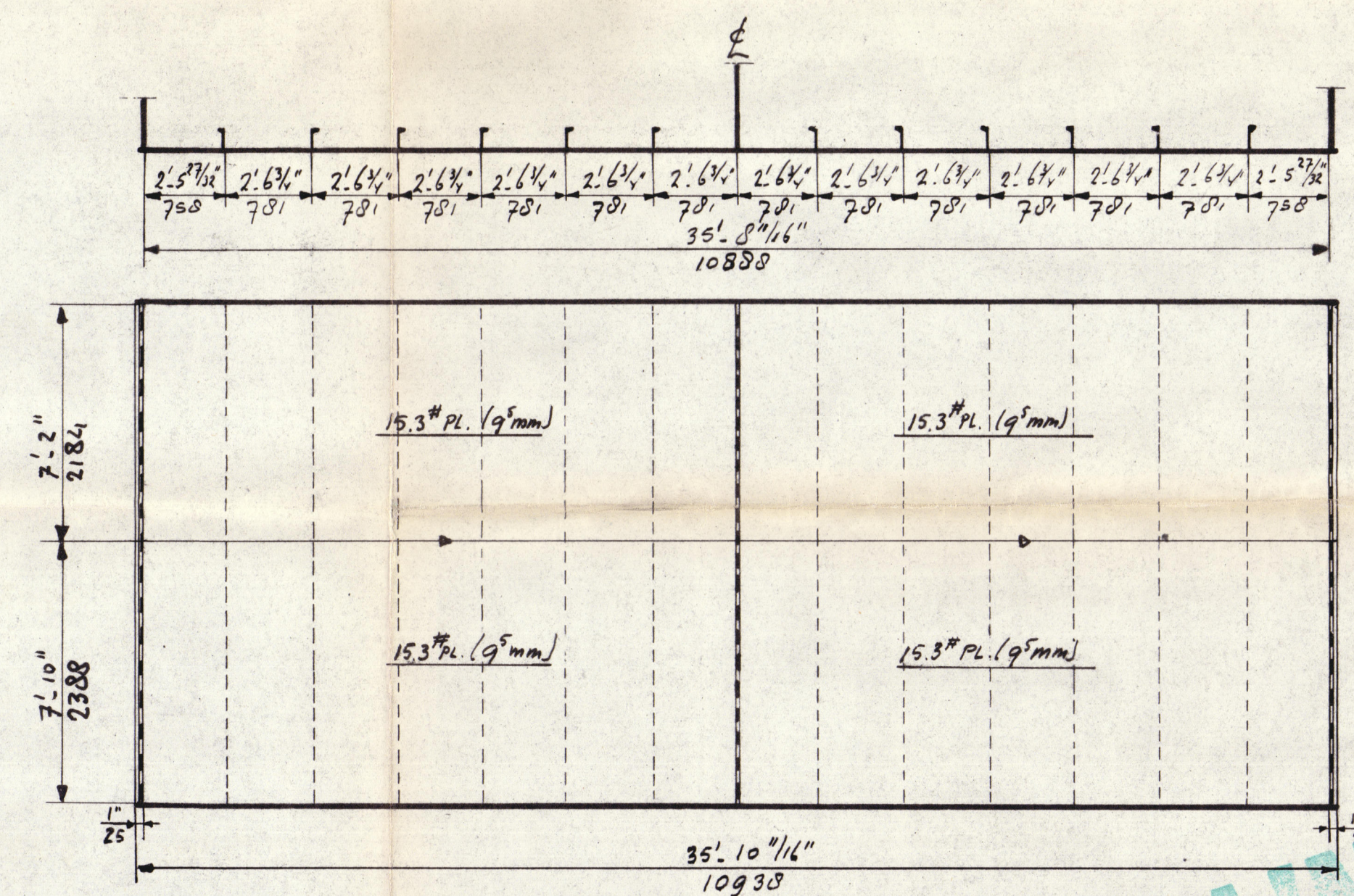
# PLAN DECK PLATING



# KEY PLAN

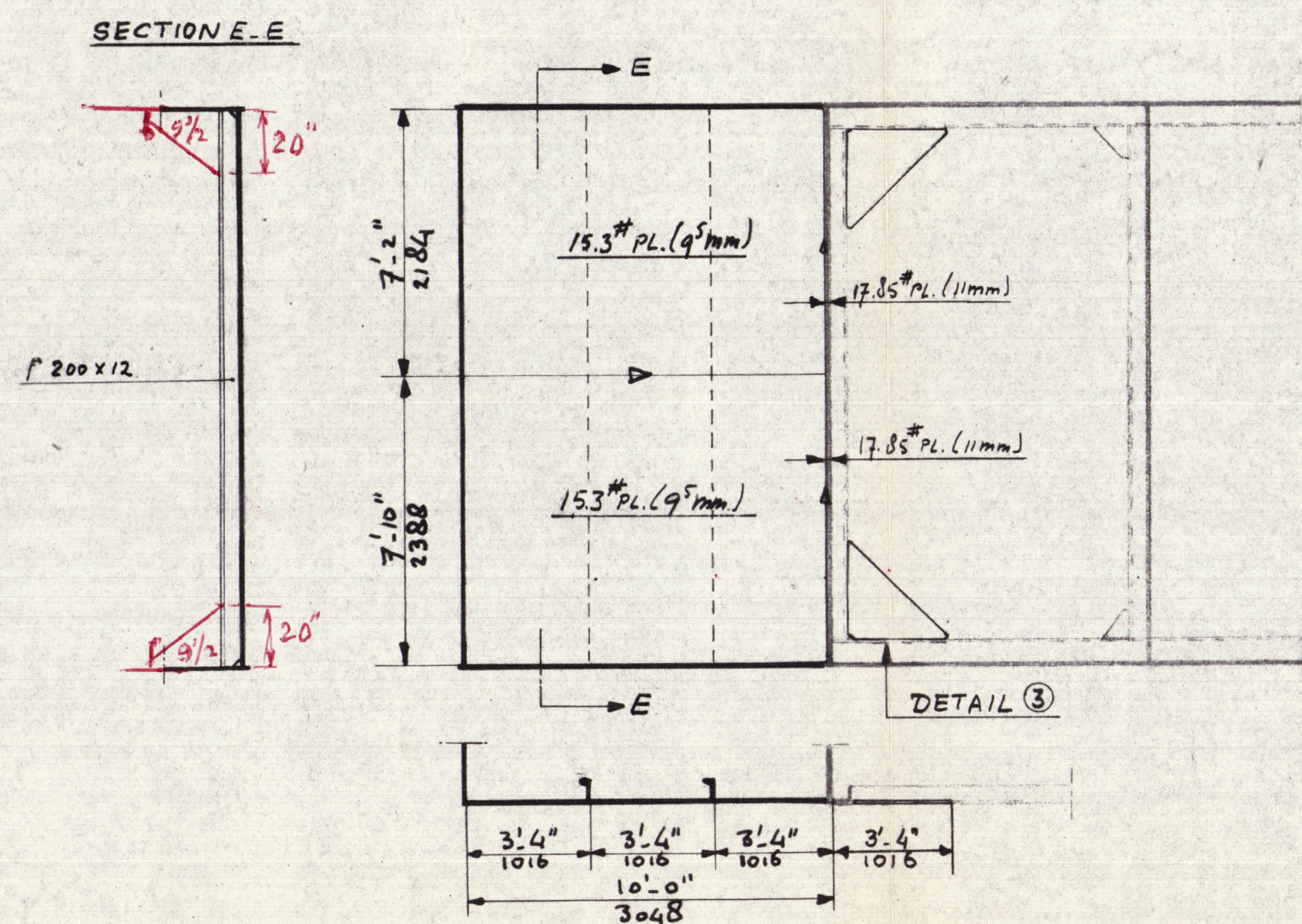


# TRANSVERSE SHELLPLATING - 50' OFF STERN

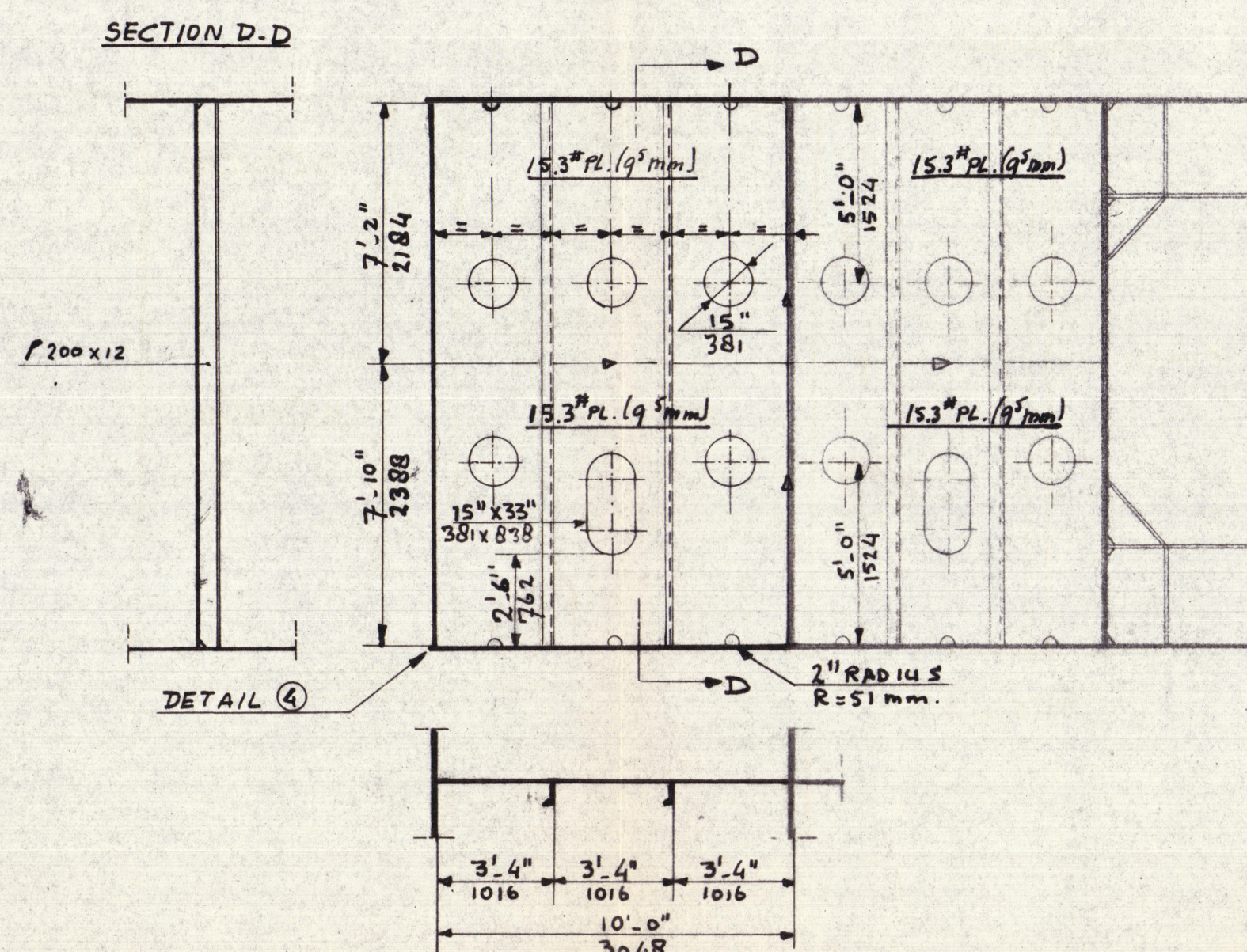


# SIDE SHELLPLATING

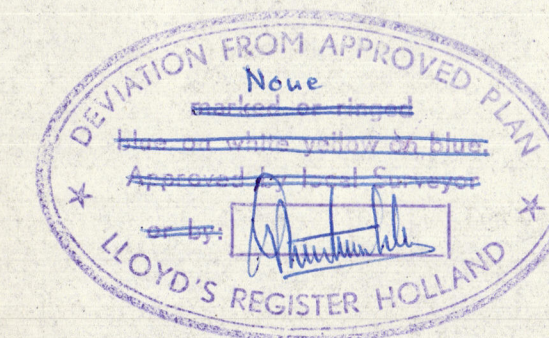
S.B. SHOWN - P.S. SIMILAR TO OPP. HAND



# SWASH BULKHEAD AT 6



ALL FRAMES, BEAMS AND STIFFENERS : P 200 x 12  
FOR DETAILS SEE DRAWING NR. 969 V-9-S, REV. A.  
FOR DETAILS OF MANHOLES SEE DRAW. NR. 969 V-10-S



PLAN AS BUILT

PLAN AS BUILT

BELONGS TO ROTTERDAM REPORT NO.

Signed London  
O.M.C. 5-1-'61  
Jel  
8-1-'61

52343

PROJECT 969V	HOLLAND SHIPBUILDING ASSOCIATION DESIGN INGENIEURSBUREAU Vlieger N.V. AMSTERDAM - ROTTERDAM	
	CONVERSION "TRITON" HF 0100/001 NAM/WW	
	EXTENSION OF THE HULL	
	SCALE: 1:50 DATE: 1-12-1960 DE BY: G.M. APPR:	969V-8-S REV. A