

21 SEP 1939

STERNFRAME. [REDACTED]

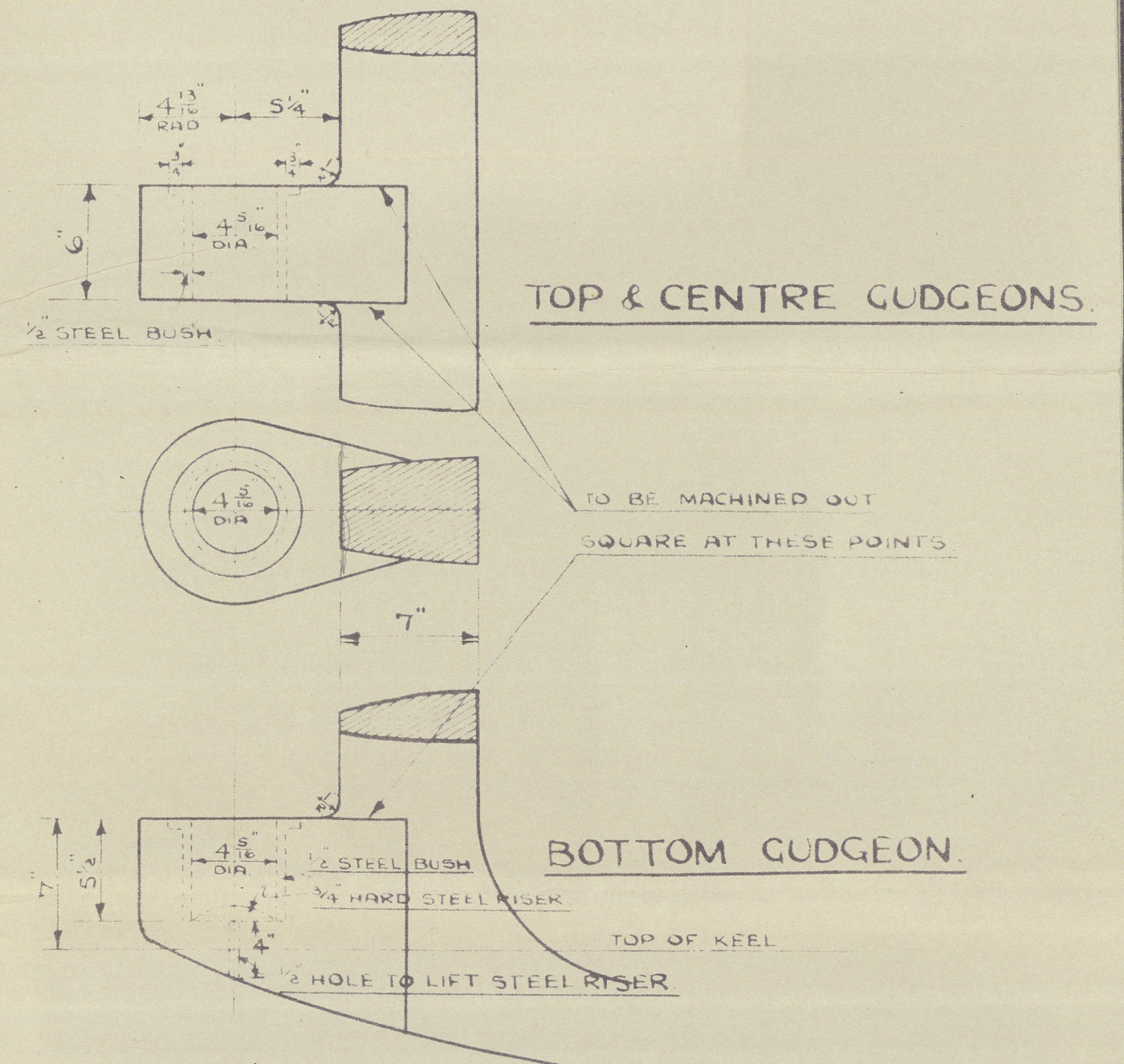
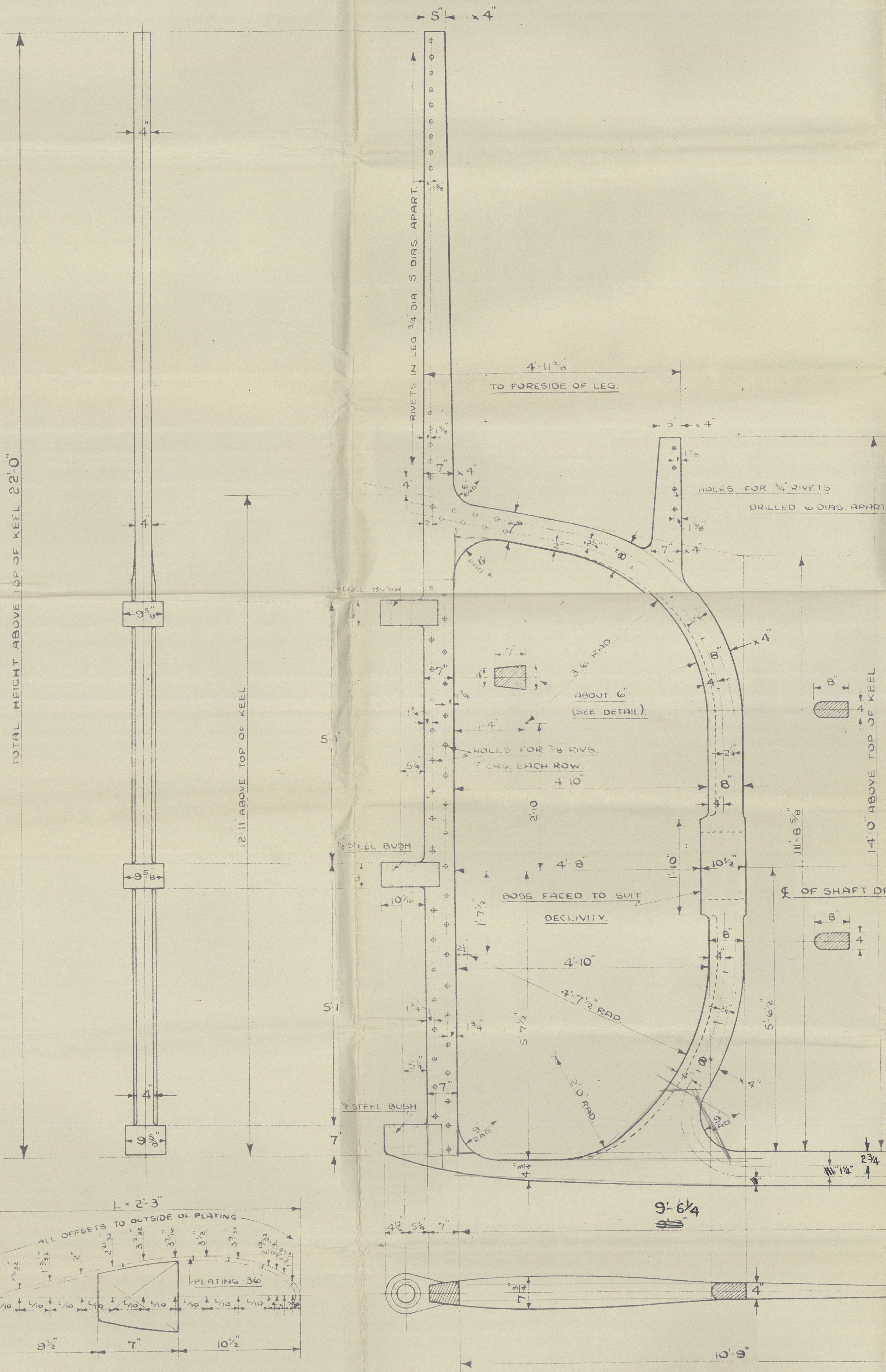
No 656

HOLES PITCHED 4" & 2 1/4" FROM INNER EDGE OF POST.

HOLES DRILLED FOR 1" RIVETS 5 DIAS. APART.

SCALE 3/4" = 1 FT.

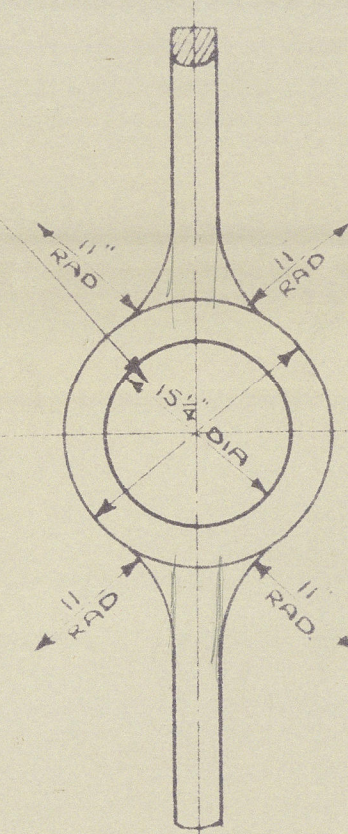
MATERIAL TO BE FORGED SCRAP STEEL.



DETAIL OF GUDGEONS.

SCALE 1 1/2" = 1 FT.

NOTE: HOLE BORED EXACTLY TO SIZE GIVEN
VIZ: - 15 1/4 DIA.



1/2 OF SHAFT.

1/2 OF SHAFT DROOPS FORWARD
10 PER FOOT

COOK, WELTON & GEMMELL LTD.
SHIPBUILDERS,
BEVERLEY.

SHAPE OF RUDDER POST.

SCALE 2" = 1 FT.

APPROVED BY LLOYD'S

HULL

Boat. Nelson Gemmell, Ltd.

B. S. S. S.

Yard No. 656

Stem name

"VIZALMA"

HULL REPORT No. 50837

© 2020

Lloyd's Register
Foundation

004962-004970-0106