

NAME OF VESSEL....."STUART PRINCE".....

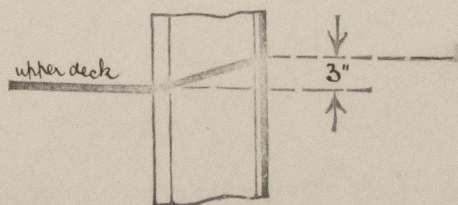
Extract from freeboard verification of marking form received
from theMIDDLESBROUGH..... Surveyors dated the
16th September, 1940.

Moulded depth	19 ft.	3 ins.
Corresponding draught	18 ft.	11½ ins.
Moulded depth as shewn on draught sheet	19 ft.	3 ins.
Tropical freeboard	0 ft.	5 ins.
Summer "	0 ft.	9 ins.
Winter "	1 ft.	1¾ ins.
W.N.A. "	1 ft.	3¾ ins.
Fresh Water Allowance		4¾ ins.

top of cant-up of
Marked from ~~wood~~ steel upper deck.

Checked by....*Ad.*.....

Date. 5th November, 1940.



© 2020

Lloyd's Register
Foundation

004946-004953-0223