

## Lloyd's Register of Shipping.

SURVEYS FOR FREEBOARD. *Vol. 6402**"KAYO MATAPAS"*

(CONDITIONS OF ASSIGNMENT.)

Ship's Name

*ex "JOHN HOLT"*

Port of Survey

*Liverpool*

Official Number

*151035*

Surveyor's Signature

*A. W. Jackson*

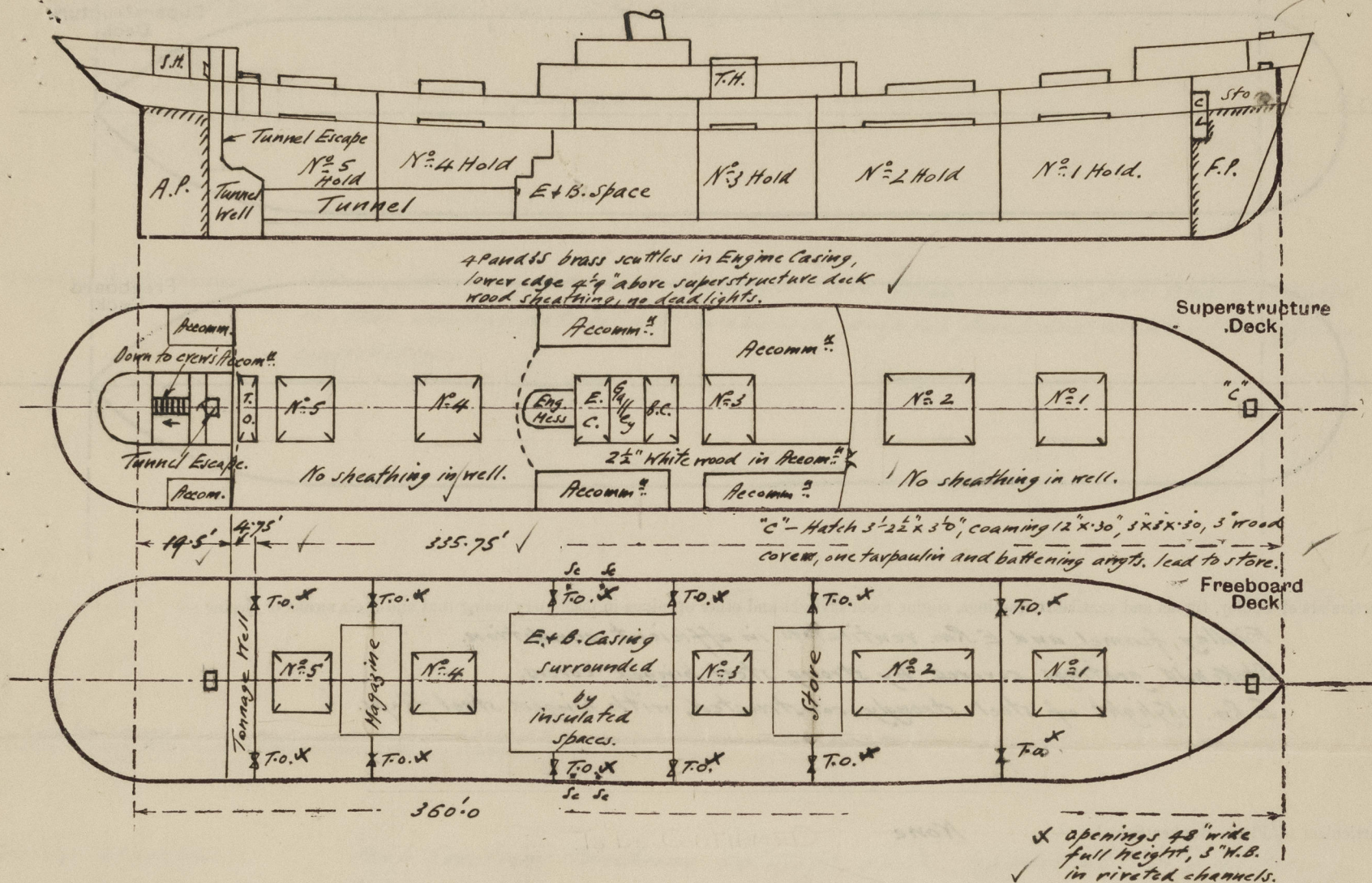
Nationality and Port of Registry

*British, Liverpool*  
*Liberian Monrovia*

Date of Survey

*During construction*

Disposition and dimensions of superstructures, trunks, deckhouses and machinery casings to be inserted in the diagrams and tabular statement:—



Particulars of Superstructures, Trunks, Casings, Deckhouses.

	Coaming	Plating	Stiffeners	Spacing	End Attachments of Stiffeners	Size of Openings	Height of Sills	Height of Casings
POOP BULKHEAD (AS C.S.D.)								
Poop Bulkhead ...	✓	.35 .25"	3 1/4" x 3 1/4" x .32" 4 x 3 x .12	2'-5 1/2" 2'-10 1/2"	BRACKETED. nil	58 1/4" x 1000 mm. none	22 3/4" ✓	7'-6" 8'-6" ✓
Raised Quarter Deck Bulkhead ...	✓	✓	✓	✓	✓	✓	✓	✓
Combined and Riser								
Bridge (After Bulkhead) ...	✓	.25"	4" x 3" x .32"	2'-10 1/2"	nil	20'4" x 5'-0"	18"	8'-6"
BRIDGE FORWARD BULKHEAD (AS C.S.D.)								
Bridge, Forward Bulkhead ...	✓	.35	8" x 3" x .35"	2'-5 1/2"	BRACKETED.	10'5" x 3'-0"	18"	7'-9"
FORECASTLE BULKHEAD (AS C.S.D.)								
Forecastle Bulkhead ... (see above)	✓	.35	4 1/4" x 3" x .35"	2'-5 1/2"	BRACKETED	10'5" x 3'-3"	33 1/2"	7'-6"
Trunk, Aft ...	✓	✓	✓	✓	✓	✓	✓	✓
Trunk, Forward ...	✓	✓	✓	✓	✓	✓	✓	✓
Exposed Machinery Casings on Freeboard or Raised Quarter Deck (AS D.)	✓	.33	3 1/2" x 2 3/4" x .33	2'-7 1/2"	CONTINUOUS	2 PORT 55 1/2" x 24" 2516	35 1/2"	✓
Exposed Machinery Casings on Superstructure Decks ...	.30"	.30"	3 1/2" x 2 1/2" x .30"	30" - 33"	nil	4 @ 2'0" x 5'-0 1/2"	18"	7'-9" ✓
Machinery Casings within Superstructures not fitted with Class I Closing Appliances ...	Totally enclosed by insulated stores, no means of access. O.S.D.							
Deckhouses on Flush Deck Ships ...	✓	✓	✓	✓	✓	✓	✓	✓

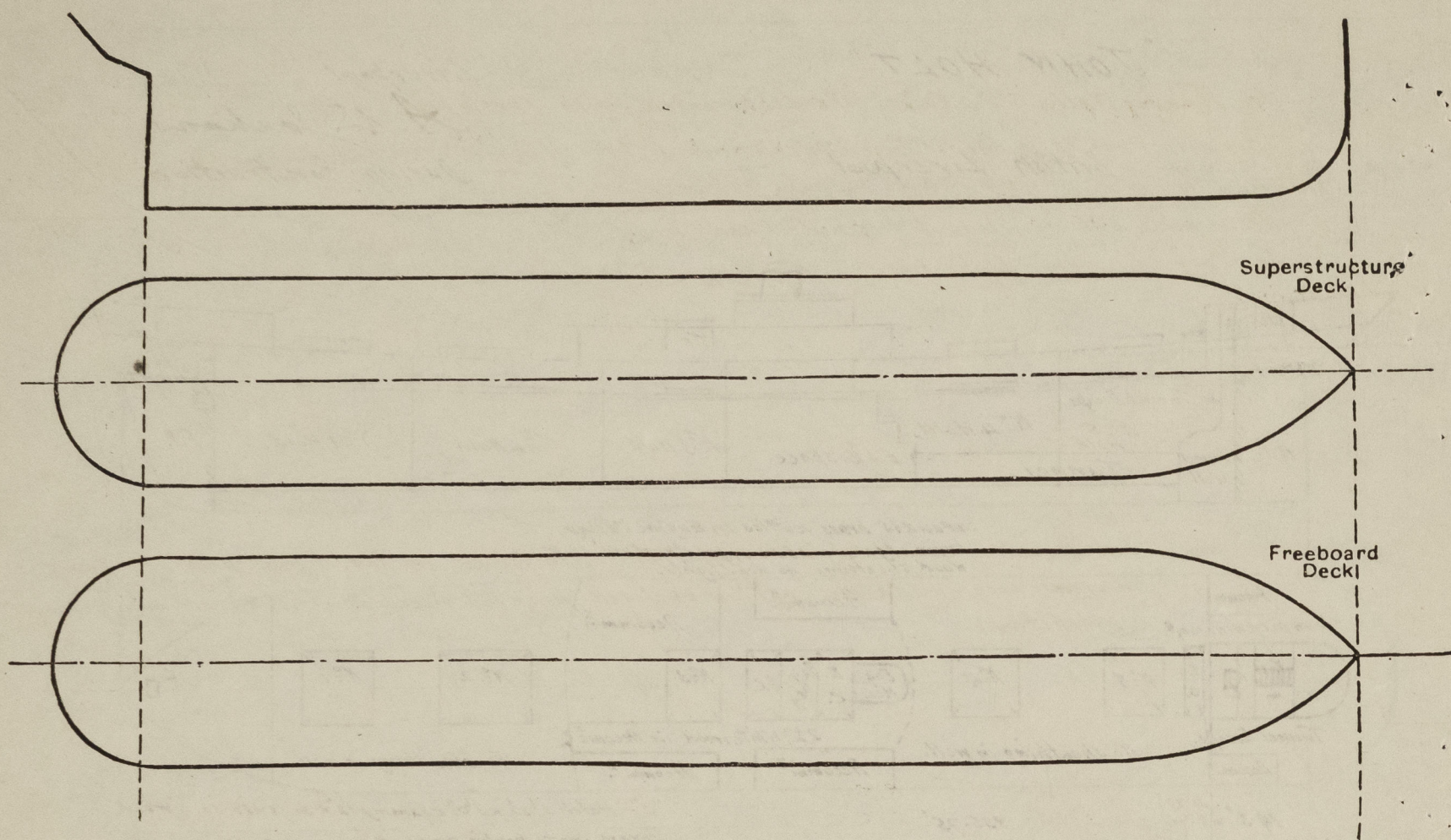
Particulars of Closing Appliances (state if capable of being manipulated from both sides).

POOP BULKHEAD AS C.S.D.	2. HINGED STEEL DOORS OPERABLE BOTH SIDES.
Poop Bulkhead ...	none
Raised Quarter Deck Bulkhead ...	✓
Combined and Riser	3" H.B. in riveted channels.
Bridge (After Bulkhead) ...	1. HINGED STEEL DOOR OPERABLE BOTH SIDES
BRIDGE FORWARD BULKHEAD (AS C.S.D.)	1 HINGED STEEL DOOR OPERABLE BOTH SIDES.
Bridge, Forward Bulkhead ...	4. HINGED STEEL DOORS OPERABLE BOTH SIDES.
FORECASTLE BULKHEAD (AS C.S.D.)	
Forecastle Bulkhead ...	
Exposed Machinery Casings on Freeboard or Raised Quarter Deck (AS D.)	
Exposed Machinery Casings on Superstructure Decks O.S.D. ...	Steel doors capable of being manipulated from both sides.
Machinery Casings within Superstructures not fitted with Class I Closing Appliances ...	✓
Deckhouses on Flush Deck Ships ...	✓



### PARTICULARS OF PROTECTION TO OPENINGS, ETC.

The following diagrams should be used to indicate the positions of cargo and coaling hatchways, gangway, cargo and coaling ports, ventilators, companionways, etc., which would affect the seaworthiness of the ship :—



Particulars of fiddley, funnel and ventilator coamings, engine room skylight and other openings in machinery casing tops and their means of closing :—

Fadley, funnel and E.Rm. ventilators in efficient condition. ✓  
Stokehold gratings covered by strong steel hinged covers. ✓  
E.Rm. skylight of steel strongly constructed, with hinged steel flaps. ✓

Particulars of Flush Bunker Scuttles:— *None*

Particulars of Companionways :— *None*

AS C.S.D. COMPANIONWAY ENCLOSED IN STRONG STEEL DECKHOUSE  
WITH 2" HINGED STEEL DOORS SILL, 23".

Particulars of Ventilators in exposed positions on freeboard and superstructure decks :—

No.	Position	Size	Height and Thkns.	Compartment	No.	Position	Size	Height + Thkns.	Compartment.
2	ford well bet erection	27 dia.	Derrick posts	N <sup>o</sup> 1 Hold + Trunk.	2	Afterwell bet Erection	24 dia.	39"x40"	N <sup>o</sup> 5 Hold + Trunk.
2	"	25 "	39"x40"	N <sup>o</sup> 2 " " "	2	under Prop erection	12 dia.	36"x36"	To Store Rm.
2	"	25 "	63"x40"	" " "					
2	after well bet. Erection	25 "	39"x40"	N <sup>o</sup> 4 " "					
2	"	15 "	39"x36"	Magnazine					
2	"	24 "	39"x40"	N <sup>o</sup> 5 Hold					
2	"	24 "	Derrick posts	" Trunk.					

Particulars of Air Pipes in exposed positions on freeboard, raised quarter, or superstructure decks :—

No.	Position	Size	Ht.	Compt.
✓ 1	Top Well. No. 1 Erection	5' 6" N.	35"	No. 2 & 3 D.B. Tanks.
✓ 2	After Well No. 2 Erection	5' 6" N.	36"	No. 8 D.B. Tank.
✓ 3	"	2' 6" N.	35"	Cofferdam
✓ 4	"	2' 2 1/2" N.	36"	Flt. A.F. Conn.
✓ 5	"	5' 6" N.	36"	Wing A.F. Tanks ab. Tower.

✓ - fitted with wire gauze protection.  
✗ - wood plugs. ✓

Particulars of Gangway Cargo and Coaling Ports:—

None

Savo Matapas.

Particulars of Scuppers and Sanitary Discharge Pipes :—

In Tonnage Well, 5 S.D. Valves (1 Panel) worked from Shelter DK. fitted with indicators  
Scuppers 2 Panel 25 in Shelter Tween DKs. draining those spaces to the machinery space bilges,  
fitted with traps at their lower ends as approved. & self closing cocks.  
Drain holes cut in wings of tween deck bulkheads where necessary. ✓  
Sanitary discharge pipes have G.M. fittings at ship's sides.

Particulars of Side Scuttles :—

Side scuttles complete with deadlights are fitted in shell port and starboard in crew's accommodation aft in enclosed poop (on freeboard deck) all of efficient construction.

Vertical distance of Sill of lowest Side Scuttle above top of keel..... 32'-6"

Particulars of Guard Rails :—

Poop Erection, stanchions 54" apart, 3 rails, top rail 46" above gutter way.  
 Bridge " " " 51"-54" " " " , top rail 44" " " "  
 Fiste " " " 53" " " " " 46" " " "

Particulars of Gangways, Lifelines, etc. :- *Lifelines fitted pas in wells between erections.*

Particulars of Freeing Arrangements.						
	Length of Bulwark	Height of Bulwark	Size of Freeing Ports	Number each side	Area each side	Rule area each side
After Well ... ..						
Forward Well ... ..						

State position of each freeing port ... .. { After Well :—  
(F. and A. position and height above deck edge) { Forward Well :—

State whether the freeing ports are fitted with shutters, bars, or rails, and give particulars of such :—

Additional area where sheer is less than standard.



PARTICULARS OF PROTECTION TO OPENINGS, ETC.

HATCHWAYS ON FREEBOARD AND SUPERSTRUCTURE DECKS.												
			Shelter DK.		Dr. DK. on Shelter DK.	Shelter DK.		Upper DK.				
			N <sup>o</sup> 1	N <sup>o</sup> 2	N <sup>o</sup> 3 Trunked	N <sup>o</sup> 4	N <sup>o</sup> 5	N <sup>o</sup> 1	N <sup>o</sup> 2	N <sup>o</sup> 3	N <sup>o</sup> 4	N <sup>o</sup> 5
Description of Hatchway ...			20'3" x 17'2"	25'1 1/2" x 17'2"	16'7 1/2" x 18'2 1/2"	23'9" x 17'2"	23'9" x 17'2"	24'7" x 17'2"	30'10 1/2" x 17'2"	21'4 1/2" x 18'2"	23'9" x 17'2"	23'9" x 17'2"
COAMINGS	Height above Deck ...	2'-9"	2'-9"	2'-9"	2'-9"	2'-9"	2'-9"	2'-9"	2'-9"	2'-9"	2'-9"	2'-9"
	Thickness ...	44"	44"	44"	44"	44"	44"	44"	44"	44"	44"	44"
	Stiffeners ...	7 x 3 x 40	7 x 3 x 40	7 x 3 x 40	7 x 3 x 40	7 x 3 x 40	7 x 3 x 40	7 x 3 x 40	7 x 3 x 40	7 x 3 x 40	7 x 3 x 40	7 x 3 x 40
	Brackets, Stays ...	1-2" diam.	2-2" diam.	1-2" diam.	2-2" diam.	2-2" diam.	2-2" diam.	2-2" diam.	2-2" diam.	2-2" diam.	2-2" diam.	2-2" diam.
HATCH BEAMS	Number ...	3	4	2	4	4	4	4	5	3	4	4
	Spacing ...	5'-0 3/4"	5'-2 3/4"	5'-6 1/2"	4'-9"	4'-9"	4'-9"	4'-9"	5'-1 1/4"	5'-4 1/8"	4'-9"	4'-9"
	Scantling and Sketch ...	Angles	Angles	Angles	Angles	Angles	Angles	Angles	Angles	Angles	Angles	Angles
	Bearing Surface ...	2@ 4 x 3 x 44 Plate 16" x 36" 7 x 3 1/2" x 50 ft. 3 1/2"	2@ 4 x 3 x 44 Plate 16" x 32" 7 x 3 1/2" x 40 ft. 3 1/2"	As N <sup>o</sup> 2 3 1/2"	As N <sup>o</sup> 2 3 1/2"	As N <sup>o</sup> 2 3 1/2"	As N <sup>o</sup> 2 3 1/2"	As N <sup>o</sup> 2 3 1/2"	As N <sup>o</sup> 2 3 1/2"	As N <sup>o</sup> 2 3 1/2"	As N <sup>o</sup> 2 3 1/2"	As N <sup>o</sup> 2 3 1/2"
FORE AND AFTERS	Number ...											
	Bearing Surface ...	None fitted										
HATCH COVERS	Material ...	M.P.	M.P.	M.P.	M.P.	M.P.	M.P.	M.P.	M.P.	M.P.	M.P.	M.P.
	Thickness ...	3"	3"	3"	3"	3"	3"	3"	3"	3"	3"	3"
	How fitted ...	F+A	F+A	F+A	F+A	F+A	F+A	F+A	F+A	F+A	F+A	F+A
	Bearing Surface ...	4"	4"	4"	4"	4"	4"	4"	4"	4"	4"	4"
Spacing of Cleats ...			24"	As N <sup>o</sup> 1	As N <sup>o</sup> 1	As N <sup>o</sup> 1	As N <sup>o</sup> 1	As N <sup>o</sup> 1	As N <sup>o</sup> 1	As N <sup>o</sup> 1	As N <sup>o</sup> 1	As N <sup>o</sup> 1
Number of Tarpaulins ...			2	As N <sup>o</sup> 1	As N <sup>o</sup> 1	As N <sup>o</sup> 1	As N <sup>o</sup> 1	As N <sup>o</sup> 1	As N <sup>o</sup> 1	As N <sup>o</sup> 1	As N <sup>o</sup> 1	As N <sup>o</sup> 1
<p>*Are wood fore and afters steel shod at all bearing surfaces? <input checked="" type="checkbox"/></p> <p>Are battens and wedges efficient and in good condition? <input checked="" type="checkbox"/></p> <p>Are tarpaulins in good condition and in accordance with rule requirements? <input checked="" type="checkbox"/></p> <p>Are lashings provided in accordance with rule requirements? <input checked="" type="checkbox"/></p>												

Tonnage Hatch on Superstructure DK. aft.

Opening 17'2 1/2" x 4'9", coaming 12' x 44", rest bar fore and aft; 16' x 3" Tyack Bar, after end 3' x 40", 3" wood covers; fitted fore and aft; no battening down aryls.

Fistle + Br. DK.

HATCH ON FORECASTLE: - 3'-0" x 3'-0" COAMING 27" x 44", 3" W.P. COVER, 2 TARPULINS, BATTENING ARRETS.

Particulars of any special features:—

HATCH ON FORECASTLE TO FP TANK.

HATCH: 3'-0" x 3'-0" ; HINGED STEEL W.T. COVER. 0.43" THICK.  
 SECURED BY 4 TUGGLES.

Endorsement at first survey and at surveys for renewal of Certificate:—

The fittings and appliances are in accordance with the particulars shown on this form (or as now modified) and are in good condition.



© 2020

Lloyd's Register Foundation