

24 JUL 1944

Index No. 37685
(For London Office only).

Lloyd's Register of Shipping.

SURVEYS FOR FREEBOARD.

(CONDITIONS OF ASSIGNMENT.)

"SUNLIGHT" ex

GRK. REPORT N° 22747

Ship's Name "EMPIRE BALFOUR"

Port of Survey GREENOCK.

Official Number

164514 3480 - H.K.

Surveyor's Signature

J. J. Jamieson

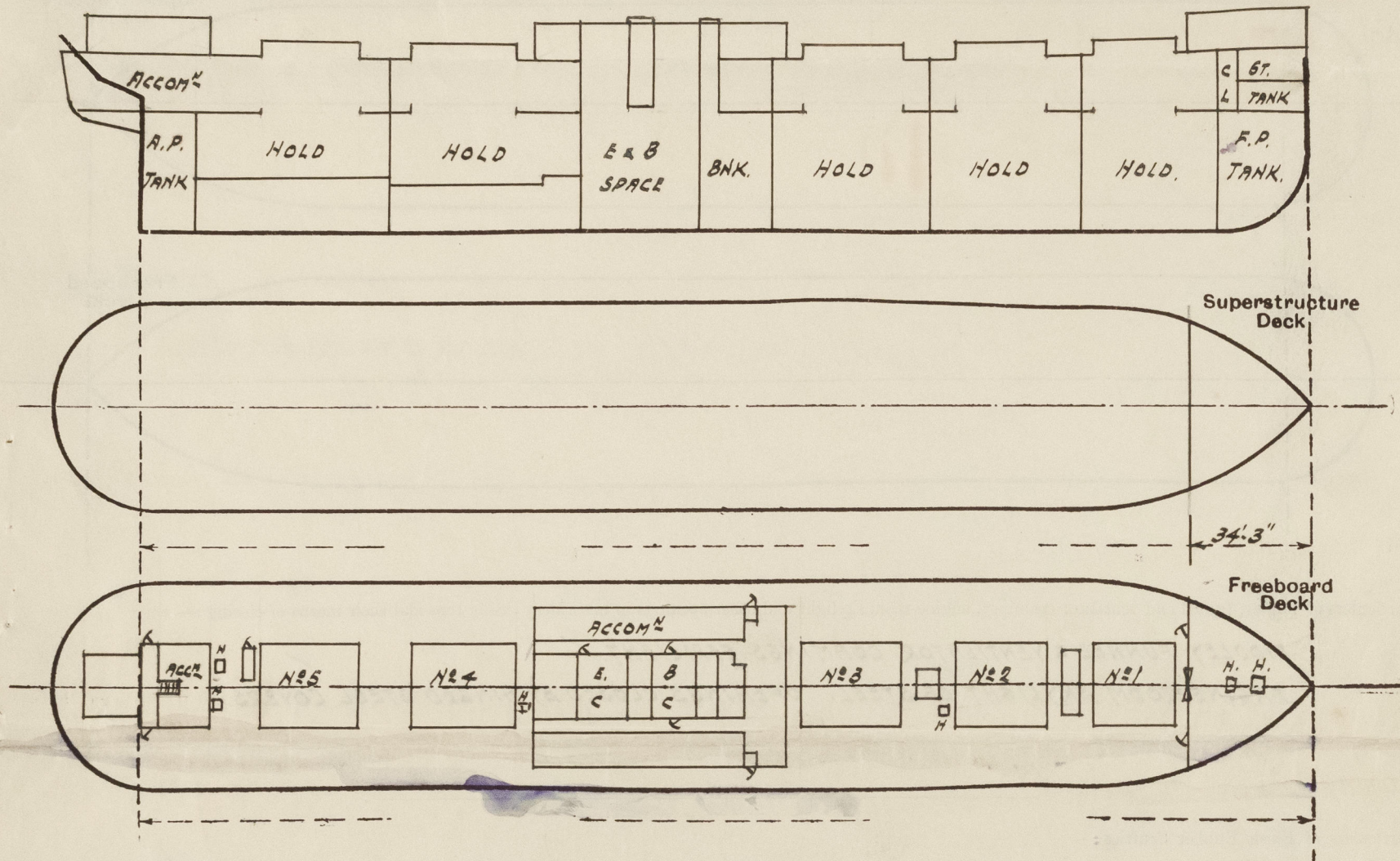
Nationality and Port of Registry

BRITISH GREENOCK
PANAMA

Date of Survey

WHILE BUILDING.

Disposition and dimensions of superstructures, trunks, deckhouses and machinery casings to be inserted in the diagrams and tabular statement : --

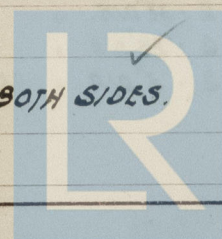


Particulars of Superstructures, Trunks, Casings, Deckhouses.

	Coaming	Plating	Stiffeners	Spacing	End Attachments of Stiffeners	Size of Openings	Height of Sills	Height of Casings
Poop Bulkhead ...	✓							
Raised Quarter Deck Bulkhead ...	✓							
Bridge, After Bulkhead ...	✓							
Bridge, Forward Bulkhead ...	✓							
Forecastle Bulkhead ...	30"	30"	5" x 3" x 30" O.A.	26" / 30"	NONE	2 @ 5'-0" x 2'-3" 1 @ 5'-0" x 4'-0"	18"	7'-6"
Trunk, Aft ...	✓							
Trunk, Forward ...	✓							
Exposed Machinery Casings on Freeboard or Raised Quarter Decks ...	✓							
Exposed Machinery Casings on Superstructure Decks ...	✓							
Machinery Casings within Superstructures not fitted with Class I Closing Appliances ...	40" x 30"	40" x 30"	3" x 3" x 30" O.A. 3 1/2" x 3" x 40" O.A.	30"	BKTS. AT TOP BOTTOM TO DK	2 @ 5'-0" x 2'-0" 2 @ 5'-0" x 2'-3"	18"	7'-6"
Deckhouses on Flush Deck Ships ...	✓							

Particulars of Closing Appliances (state if capable of being manipulated from both sides).

Poop Bulkhead ...	✓
Raised Quarter Deck Bulkhead ...	✓
Bridge, After Bulkhead ...	✓
Bridge, Forward Bulkhead ...	✓
Forecastle Bulkhead ...	BOLTED PLATE WITH HOOK BOLTS NOT PASSING THRU ² BND. SPACED 15" APART & TWO DOORS (WOOD).
Exposed Machinery Casings on Freeboard or Raised Quarter Decks ...	✓
Exposed Machinery Casings on Superstructure Decks ...	✓
Machinery Casings within Superstructures not fitted with Class I Closing Appliances ...	STEEL DOORS CAPABLE OF BEING MANIPULATED FROM BOTH SIDES.
Deckhouses on Flush Deck Ships ...	✓



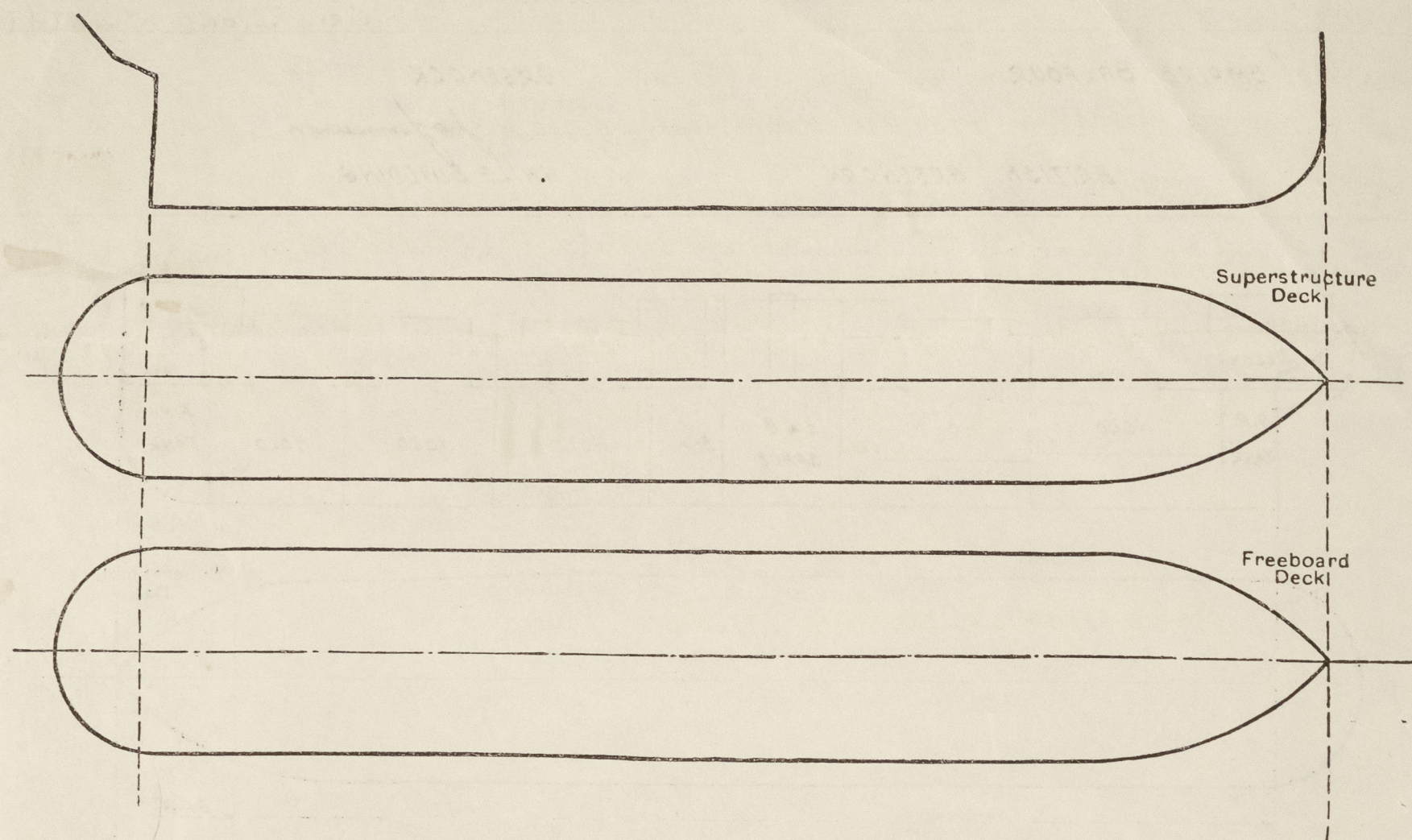
© 2020

Lloyd's Register
Foundation

004906-004917-0127 1/2

PARTICULARS OF PROTECTION TO OPENINGS, ETC.

The following diagrams should be used to indicate the positions of cargo and coaling hatchways, gangway, cargo and coaling ports, ventilators, companionways, etc., which would affect the seaworthiness of the ship:—



Particulars of fiddle, funnel and ventilator coamings, engine room skylight and other openings in machinery casing tops and their means of closing:—

FIDDLE, FUNNEL & VENTILATOR COAMINGS EFFICIENT.
ENGINE ROOM SKYLIGHT OF STEEL. OPENINGS CLOSED BY HINGED STEEL COVERS.

Particulars of Flush Bunker Scuttles:—

NONE.

Particulars of Companionways:—

ENTRANCE TO CREW ACCOM. AFT. FROM DECKHOUSE WITH WOOD DOORS. 21" COAMINGS.
" " GUNNERS FROM COMPANIONWAY WITH WOOD DOOR. 21" COAMINGS.
" " REFRIG. MACH. CABIN STORE (SS) AMIDSHIPS FROM TRUNK IN SIDE OF DECKHOUSE & FITTED WITH STEEL W.T. DOOR. 24" COAMINGS.

Particulars of Ventilators in exposed positions on freeboard and superstructure decks:—

F/CLE DK: 1-10" DIA. x 32' 36" COAMING. TO STORE
2-18" " x 40' 36" " TO HOLD.
UPPER DK: 8-15" " x 38' 36" " " "
6-15" " x 38' 36" " " "
2-18" " x 40' 36" " " "
2-12" " x 34' 36" " TO REFRIG.
2-12" " x 34' 36" " " J.W. DKS.
2-10" " x 34' 36" " " CROSS BUNKER.
2-10" " x 32' 36" " " HOLD.
4-10" " x 32' 36" " " PASSAGES.
4-9" " x 32' 36" " " RATINGS ETC.
9-8" " x 30' 36" " " CREW.
1-8" " x 30' 36" " " STEERING COMPI.
2-6" " x 30' 36" " " "
ON TOP OF MAST 1-18" x 40' 36" " " HOLD
HOUSE 1-10" x 32' 36" " " "

ALL VENTILATORS PROVIDED WITH WOOD PLUGS & CANVAS COVERS.
ALL VENTILATORS CONSTRUCTED IN ACCORDANCE WITH THE RULES.

Particulars of Air Pipes in exposed positions on freeboard, raised quarter, or superstructure decks:—

F/CLE DK: 4-3" DIA. TO FORE PEAK TANKS. 18" HIGH
1-4" DIA. TO DOUBLE BOTTOM TANK. 18" HIGH
UPPER DK: 10-4" DIA. " " 30" "
10-3" DIA. " " 30" "
2-3 1/2" DIA. " " 30" "
6-2 1/2" DIA. " " 30" "
2-3" DIA. " AFT. PEAK TANK. 30" "

ALL AIR PIPES FITTED WITH WOOD PLUGS.

Particulars of Gangway Cargo and Coaling Ports:—

NONE.

Particulars of Scuppers and Sanitary Discharge Pipes:—

SANITARY DISCHARGES FROM UPPER DECK LED OVERBOARD & FITTED WITH STORM VALVES 6'-0" BELOW UPPER DECK.
SANITARY DISCHARGES FROM SPACES BELOW UPPER DECK LED OVERBOARD ABOVE 2ND DECK & FITTED WITH 2 AUTOMATIC NON RETURN VALVES, BOTH VALVES BEING ACCESSIBLE.
PIPE SCUPPERS FITTED TO UPPER DECK & LED OVERBOARD.
NO SANITARY OR SCUPPER DISCHARGES LED OVERBOARD BELOW 2ND DECK.

Particulars of Side Scuttles:—

10" DIA. SIDELIGHTS TO CREW AFT. FITTED WITH DEADLIGHTS.

Vertical distance of Sill of lowest Side Scuttle above top of keel. NO SIDELIGHTS BELOW 2ND DECK.

Particulars of Guard Rails:—

FORECASTLE DECK: 2 RAILS. 3'-3" HIGH. STANCHIONS ABOUT 5'-0" APART.
UPPER DECK: 3 RAILS. 3'-6" HIGH. STANCHIONS ABOUT 5'-0" APART.
BULWARK AMIDSHIPS IN WAY OF HOUSE WITH 6 1/2" B.A. RAILS.
& STANCHIONS ABOUT 6'-0" APART. & FREEING PORTS P&S. 4'-0" x 9"

Particulars of Gangways, Lifelines, etc.:—

PROVISIONS MADE FOR FITTING LIFELINES ALL FORE & AFT.

Particulars of Freeing Arrangements.

	Length of Bulwark	Height of Bulwark	Size of Freeing Ports	Number each side	Area each side	Rule area each side
After Well ...	✓					
Forward Well ...	✓					
State position of each freeing port ... (F. and A. position and height above deck edge)						
State whether the freeing ports are fitted with shutters, bars, or rails, and give particulars of such:—						
Additional area where sheer is less than standard.						

EMPIRE BALFOUR.

PARTICULARS OF PROTECTION TO OPENINGS, ETC.

HATCHWAYS ON FREEBOARD AND SUPERSTRUCTURE DECKS.									
UPPER DECK.					BOAT DECK.				
Description of Hatchway	Nº1	Nº2	Nº3	Nº4	Nº5	COAL HATCHES.	SMALL HATCHES.
Dimensions of Hatchway	29'3" x 23'	36' x 23'	33' x 23'	36' x 23'	36' x 23'	9' x 18'	9' x 18'
COAMINGS	Height above Deck	...	30"	30"	30"	42"	42"	36"	15"
	Thickness	Sides	.50"	.50"	.50"	.50"	.50"	.40	.40
		Ends	.44"	.44"	.44"	.44"	.44"	.40	.40
	Stiffeners	...	7' x 3" x 40'	8' x 3" x 40'	8' x 3" x 40'	8' x 3" x 40'	8' x 3" x 40'	NONE	NONE
HATCH BEAMS	Number	...	5	6	6	6	6	4	4
	Spacing	...	4'-10 1/2"	5'-1 5/8"	4'-8 1/4"	5'-1 5/8"	5'-1 5/8"	4'-6"	4'-6"
	Scantling and Sketch	...	2 1/2" x 38"	4 5/8" x 40"	4 5/8" x 40"	5 7/8" x 40"	1 8/16" x 38"	1 6/16" x 34"	1 4/16" x 34"
	Bearing Surface	...	5' x 3" x 38"	3' x 3" x 36"	3' x 3" x 36"	3' x 3" x 36"	5' x 3" x 38"	3' x 3" x 50"	3' x 3" x 50"
FORE AND AFTERS	Number	...							
	Spacing	...							
	Unsupported Lengths	...							
	Scantling and Sketch	...							
HATCH COVERS	Material	...	WOOD	WOOD	WOOD	WOOD	WOOD	WOOD	WOOD
	Thickness	...	2 1/2"	2 1/2"	2 1/2"	2 1/2"	2 1/2"	2 1/2"	2 1/2"
	How fitted	...	F & A	F & A	F & A	F & A	F & A	F & A	F & A
	Bearing Surface	...	3"	3"	3"	3"	3"	3"	3"
Spacing of Cleats	24"	24"	24"	24"	24"	24"	24"
Number of Tarpaulins	2	2	2	2	2	2	2

*Are wood fore and afters steel shod at all bearing surfaces? YES.

Are battens and wedges efficient and in good condition? YES.

Are tarpaulins in good condition and in accordance with rule requirements? YES.

Are lashings provided in accordance with rule requirements? YES. (LOCKING BARS PROVIDED AT ALL HATCHES).

Particulars of any special features:—

Endorsement at first survey and at surveys for renewal of Certificate:—

The fittings and appliances are in accordance with the particulars shown on this form (or as now modified) and are in good condition.



© 2020

Lloyd's Register Foundation