

Nos. 39-40.

MIDSHIP SECTION.

SCALE 1/2" = 1 FOOT.

DIMENSIONS - 310'-0" S.P. x 45'-0" M.D. x 27'-1" A.I.D. TO UPPER DECK.

TO CLASS 100 A-1 WITH FREEBOARD CORRESPONDING TO A
SUMMER MOULDED DRAFT OF 18'-7 1/2" M.D.
SUB-DIVISION WITH BULKHEADS CARRIED TO UPPER DECK.

LLOYDS NUMERALS.

D = 27.68
L x D = 8395
L x (B-D) = 22345
PROPORTIONS TO UPPER DECK = 11.44
PROPORTIONS TO BRIDGE DECK = 8.8

FREEBOARD COEFFICIENT OF
FINENESS: .66

EQUIPMENT NUMERAL (RULE).

L x (B-D) = 22345
BRIDGE 200' x 8' x 1/2" = 1200
FORECASTLE 50' x 7 1/2' x 1/2" = 281
HOUSES 199' x 8' x 1/2" = 796
24622

3 BOWER ANCHORS 128 CENTS STOCKLESS
1 STREAM ANCHOR 12 CENTS EX STOCK
270 FATHOMS 1 1/8" STUD LINK CHAIN CABLE
90 FATHOMS 3/4" 6 x 12 FLEX. STEEL WIRE (STREAM)
100 FATHOMS 3/4" 6 x 12 FLEX. STEEL WIRE (TOWLINE)
2 C 90 FATHOMS 2 1/2" 6 x 12 FLEX. STEEL WIRE (HANKERS)
2 C 90 FATHOMS 2 1/4" 6 x 12 FLEX. STEEL WIRE (HANKERS)

PRINCIPAL SCANTLINGS.

STEM 8' x 24" POST 9' x 5 1/2" CRUISER STERN
FRAMES SPACED 27" APART 24" FORD OF 1/2" L TO FP BULB 18" FORD PEAK 28" AT PEAK
DECK FRAMES 32' x 5' x 40' S.A.
MAIN FRAMES 8' x 3' x 42' S.A. N.B.S. + 46' N.B.S. 62' x 5' x 38' S.A. IN WAY OF 2ND DECK
TWEEN DECK FRAMES IN UPPER TWEEN DECKS 5' x 3' x 38' S.A. EVERY FRAME
TWEEN DECK FRAMES IN POOP TWEEN DECKS 5' x 3' x 38' S.A. EVERY FRAME
BULKHEADS FOR 4 FRAMES SPACED AT END OF POOP CARGO CONTINUOUS FROM UPPER DECK
TWEEN DECK FRAMES IN FORECASTLE ON ALTERNATE FRAMES INTERMEDIATE ANGLE
FRAMES 32' x 5' x 32' SCARFED FITTED 1/2" L FROM AFT + 1/2" L FROM FORD (AFT + WIND REINFORCED)
TRANSOM PLATE 34 1/2' x 46'

CELLULAR DOUBLE BOTTOM (TO CARRY OIL FUEL) TO SUIT NUMBER OF RIVETS
AT PANTING FRAMES.

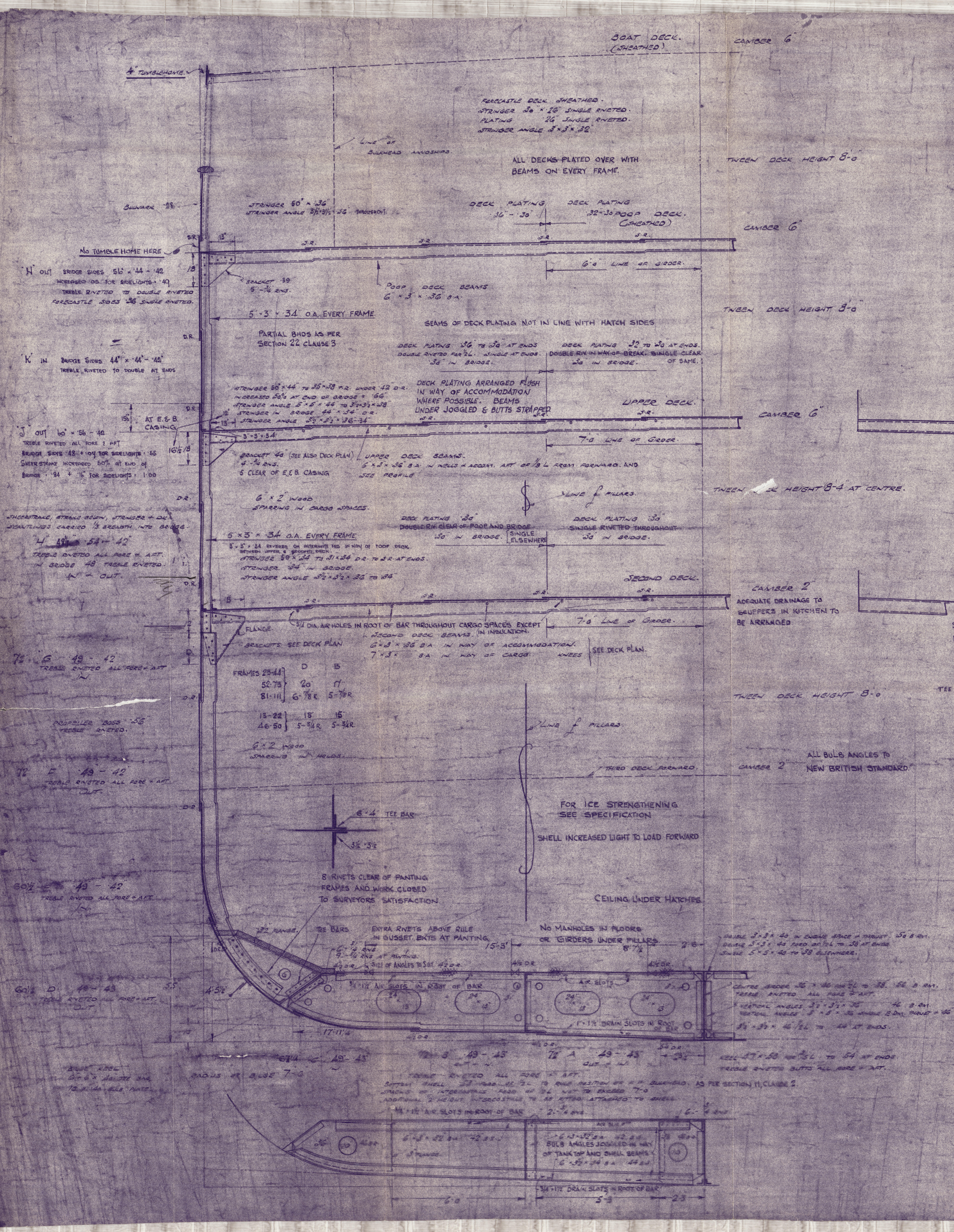
TEE BARS: TANK MARGIN VERTICAL OUTSIDE ANGLE 6' x 5' x 36" 46' B.S.
TANK MARGIN VERTICAL INSIDE ANGLE 3 1/2' x 3 1/2' x 36" 46' B.S.
MARGIN PLATE 26 1/2' x 42' DOUBLE RIVETED 52' B.S. DOUBLE RIVETED
MARGIN ANGLE AND AS PER PROFILE 4' x 3 1/2' x 44" 44' B.S.
SOLID FLOORS EVERY 4TH FRAME IN SOLID FLOORS EVERY FRAME IN ENGINE ROOM, UNDER
BULKHEADS, BOWER BEAMERS + FORD ON 1/2" L PARTIAL SOLID FLOORS UNDER THROUST
HEATING (SEE PROFILE FOR ARRANGEMENT OF SOLID & BUILT FLOORS)
FLOORS 36" 46" DOUBLE SPACE
N.T. ROOFS: INTERCOSTALS 34" 46" BULB SPACE 36" ENGINE SPACE 36" 46" IN LIEU OF BITUMASTIC
INTERCOSTALS 34" 46" BULB SPACE 36" ENGINE SPACE 36" 46" IN LIEU OF BITUMASTIC
MODELS LUG STRAPS 127' x 44' x 40" 52' BULB SPACE 110" TO D.R.
TANK TOP PLATING 126" FORD + AFT 82' BULB SPACE 44" ENGINE ROOM
SHEATHING ON TANK TOP UNDER HATCHES BUTTS + SEAMS DOUBLE RIVETED 44" IN WAY OF 2ND DECK
TANK KNEES 33' x 36" 46" N.B.S. BOWLER SPACES 34" IN WAY OF 2ND DECK
TANK FRAMES 3 1/2' x 3 1/2' x 36" 46" BULB SPACE DOUBLE FORD ON 1/2" L OR 5' x 5' x 36" SINGLE
TANK REVERSE FRAMES 3 1/2' x 3 1/2' x 36" 46" BULB SPACE DOUBLE IN BOW THIRST + 68" OR 5' x 5' x 36" SINGLE 46"
INTERCOSTAL TOP + BOTTOM ANGLES 3 1/2' x 3 1/2' x 36" 46" BULB SPACE DOUBLE 36" BOWLER SPACE BOTTOM ONE
INTERCOSTAL TOP BARS DOUBLE IN ENGINE ROOM AS PER RULE
ADDITIONAL GIRDERS UNDER ENGINE SEAT + THROUST

PLATE GUSSET EVERY 2ND FRAME ABOARD 1/2" L FROM STEM 36" 46' B.S. 6' x 1/4" RIVETS
CONTINUOUS GUSSET FORD 1/2" L FROM STEM 36" 46' B.S. 6' x 1/4" RIVETS
INTERCOSTAL VERTICAL ANGLES 3' x 3' x 36" 44" BOWLER SPACE
TANK ENDS TO HAVE DOUBLE SINGLE RIVETED BOUNDARY ANGLES.

SEE NOTE TO TABLE 6 CIRCULAR 1886 RE-SIZES
OF ANGLE FLANGES

NOTE: FLOORS, INTERCOSTALS AND ANGLES IN DOUBLE
BOTTOM REDUCED OR IN THICKNESS IN WAY OF
24" FRAME SPACING

SECTION 20 OF THE RULES TO BE COMPLIED WITH
FLASH POINT OF THE OIL FUEL TO BE ABOVE 150°F.



601077

Amherst

S.S. "FORT AMHERST"

BLYTHSWOOD S.B. CO'S N^o 39.

MIDSHIP SECTION

(AS BUILT).

JANUARY 1936

GLASGOW REPORT No. 56500



© 2020

Lloyd's Register
Foundation

004881-004886-0155