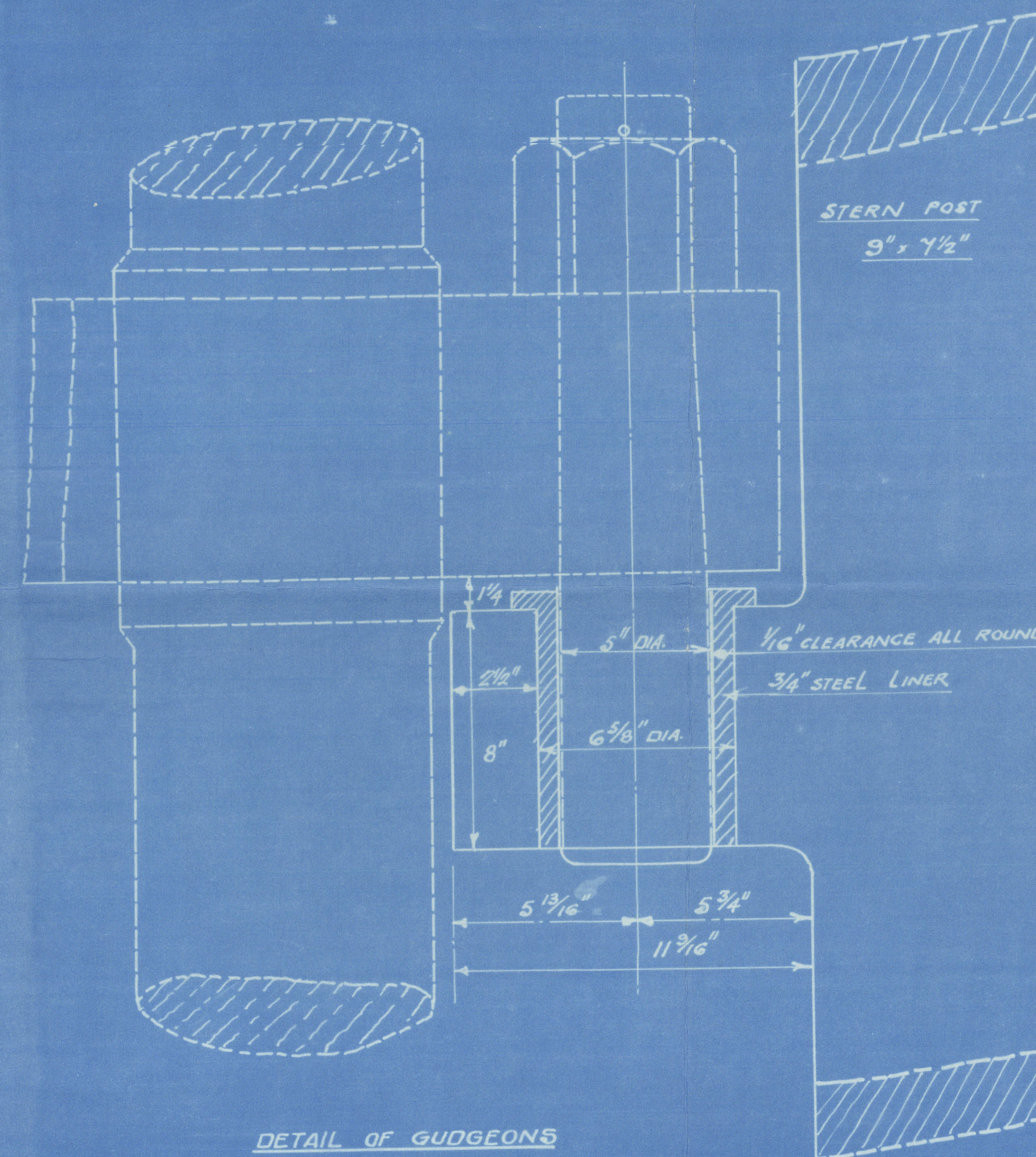
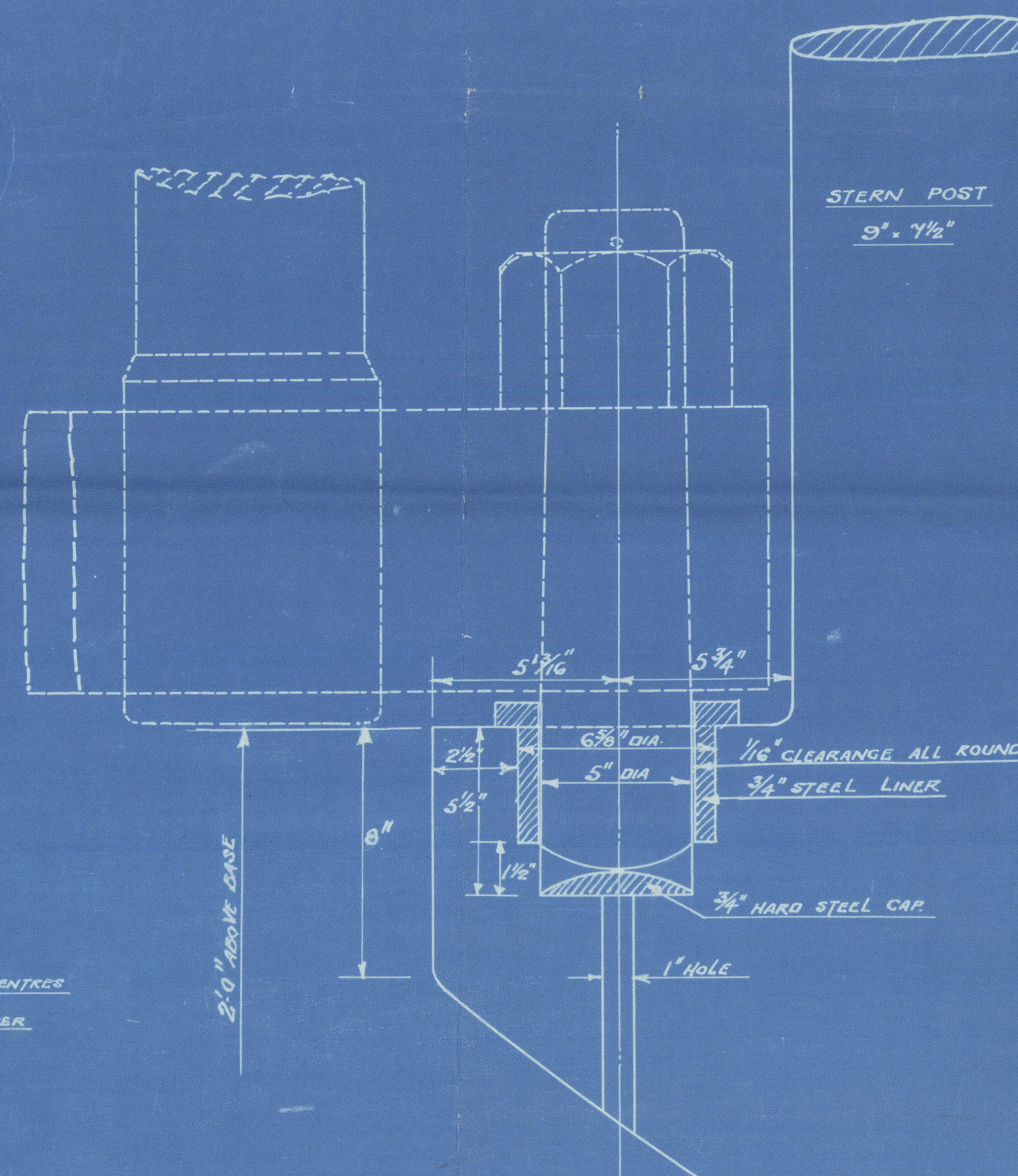
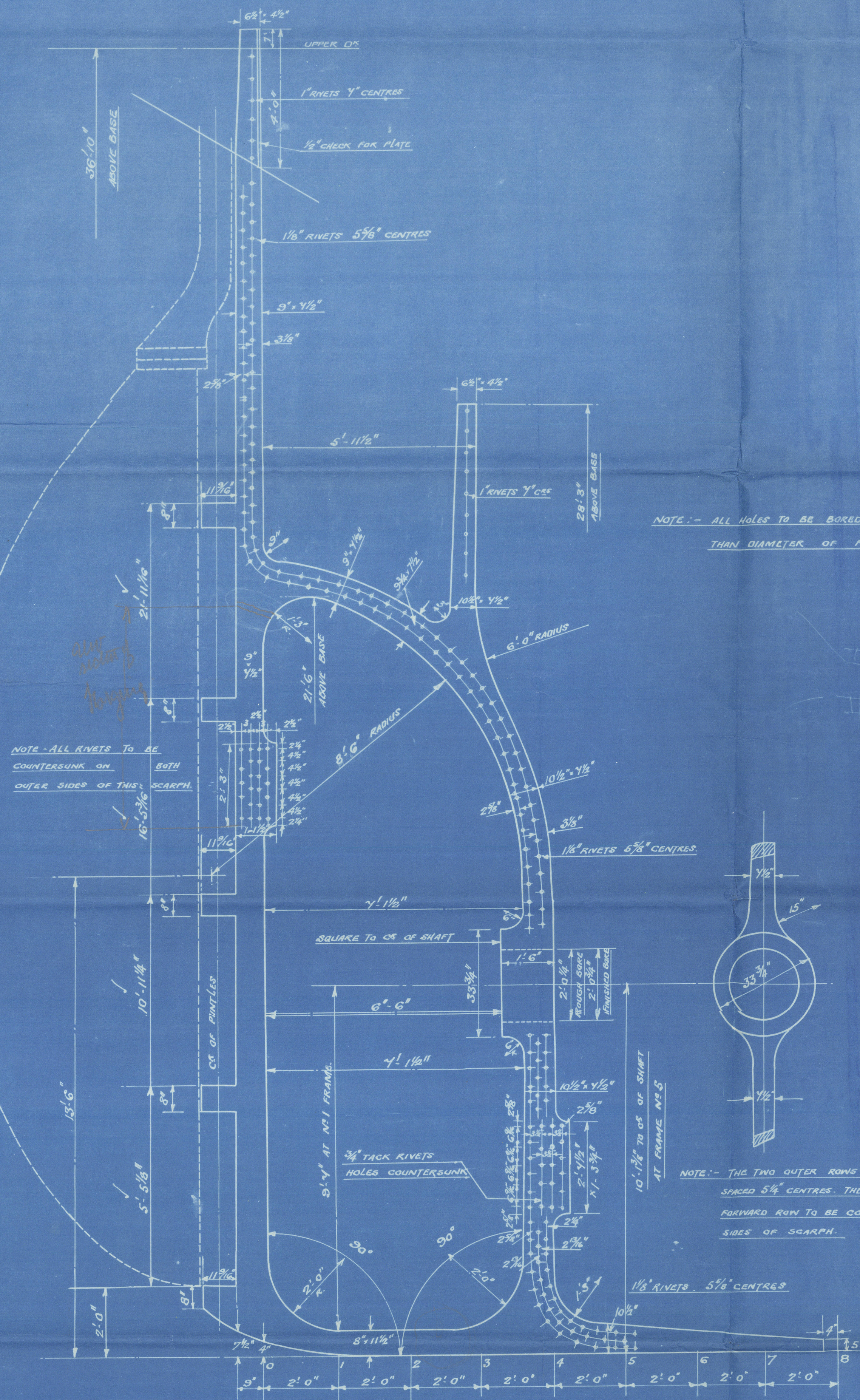


$L \times (S+D) = 400' \times (52+31) = 33,200$   
 PROPELLER POST  $10\frac{1}{2}'' \times 7\frac{1}{2}''$  RUDDER POST  $9'' \times 7\frac{1}{2}''$   
 $A \times D = 144 \times 310 = 45,840$   
 RUDDER HEAD  $10''$  DIA. PINTLES  $5''$  DIA.

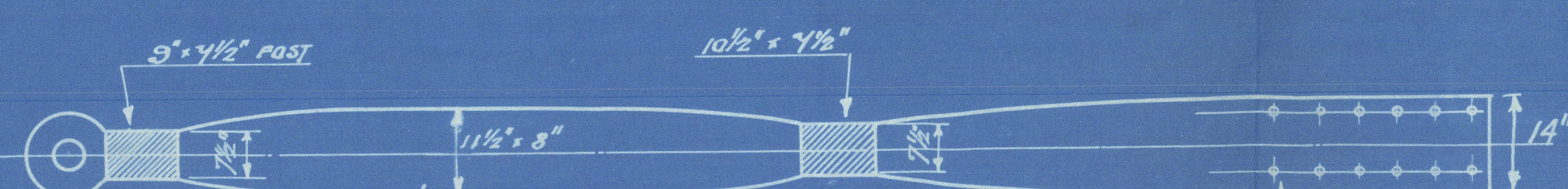


DETAIL OF GUDGEONS  
 SCALE 3" = 1 FOOT.

NOTE: - ALL HOLES TO BE BORED  $\frac{1}{16}''$  LARGER  
 THAN DIAMETER OF RIVETS.

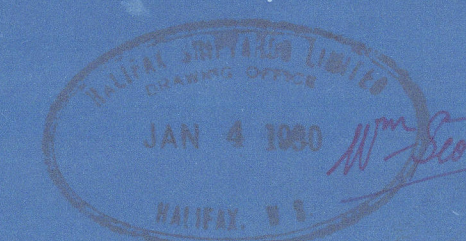


DETAIL OF BOTTOM GUDGEON  
 SCALE 3" = 1 FOOT.



DIMENSIONS LIFTED FROM RUDDER STOCK.

TRACED FROM PLAN NO 3188 DATED 3/12/29 SHIPS NO 631-2  
 EARLE'S SHIPBUILDING & ENG' CO LTD. HULL, ENG.



S.S. "GREY COUNTY"
STERNFRAME
HALIFAX SHIPYARDS LIMITED
HALIFAX NOVA SCOTIA
SCALES $\frac{1}{2}'' = 1$ FOOT
TRACED BY <i>ad</i>
DATE 17th DEC. 29



Sternframe

<sup>2/3</sup> "GREY COUNTY" NOW TITANIA

see report from Halifax. - Feb. 1930.

1930

<sup>2/3</sup> Grey County



© 2020

Lloyd's Register  
Foundation

004810-004816-0092