

EQUIPMENT			
2	STEELLESS BOWERS	34	CWTS EACH
1	STREAM ANCHOR	1 1/2	CWTS EX STOCK
180	FATHOMS OF 1 1/2" STUD CHAIN CABLE		
75	---	3 1/2	STEEL WIRE STREAM
105	---	3 1/2	---
2 AT 90	---	2 1/2	STEEL WIRE
2 AT 90	---	2 1/2	STEEL WIRE

N^o 91. MIDSHIP SECTION.

DIMENSIONS - 253'-0" B.P. - 43'-2" M^{LD} - 20'-0" M^{LD}.
TO CLASS-B.S* (GREAT LAKES AND RIVER S^t LAWRENCE.)

SCALE 1/2" = ONE FOOT
DRAFT 14'-0" F.W.

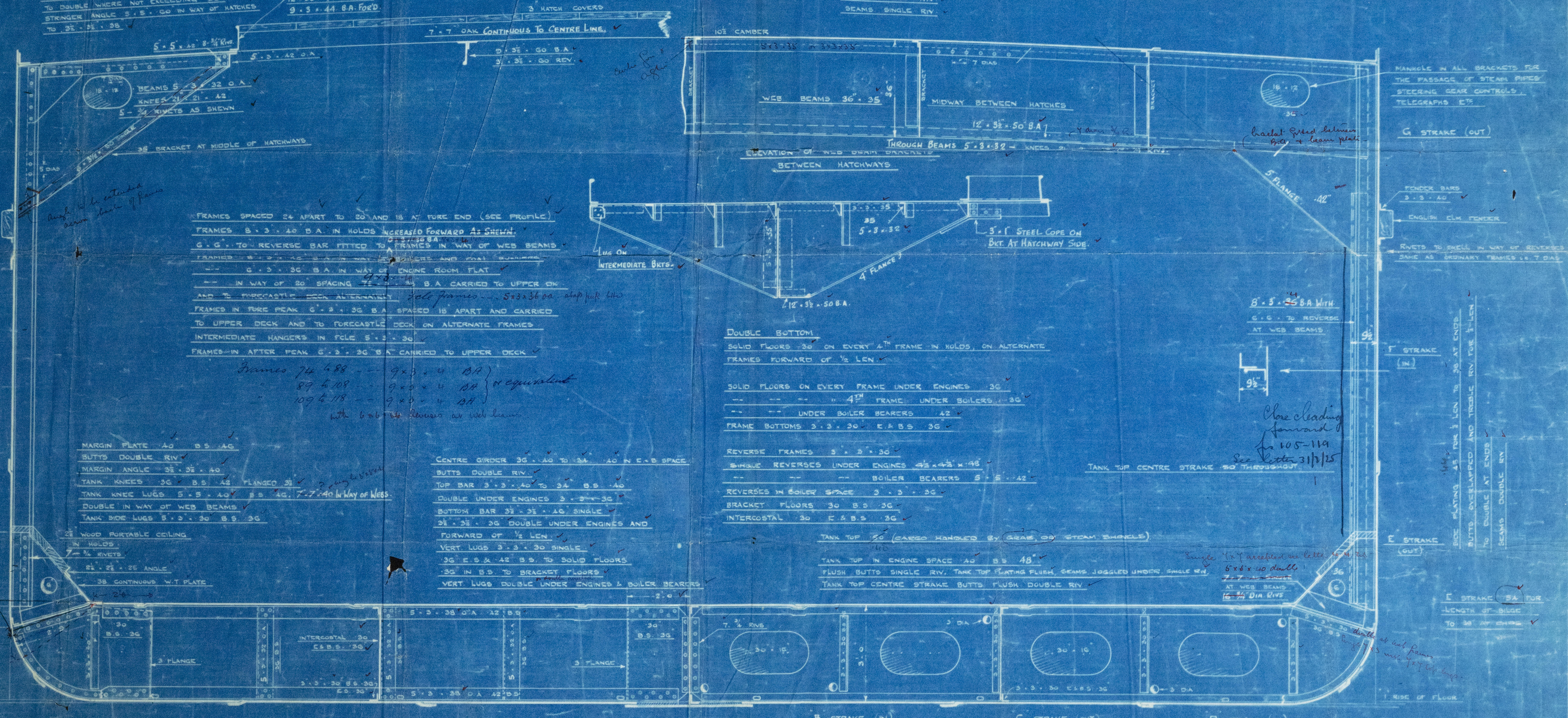
NOTE: RIVETING TO BE ARRANGED TO SUIT MULTIPLE WORK AS MUCH AS POSSIBLE.

- RIVETING**
- RIVETS THRO FRAMES TO SHELL 3/4" DIA SPACED 5 1/2" C" TO C"
 - DECK BEAMS 3/4" DIA -- 5 1/2" --
 - REVERSE FRAMES TO TANK TOP 3/4" DIA SPACED 5 1/2" C" TO C"
 - FLOORS TO FRAMES AND REVERSES 3/4" DIA SPACED 5 1/2" C" TO C"
 - 3/4" DIA RIVETS TO BE FITTED THROUGHOUT SHELL INCLUDING KEEL TO
 - OUT MULTIPLE WORK 7/8" DIA RIVS IN KEEL BUTTS
 - 7/8" RIVETS IN BUTTS OF STRANGER WHERE GO
 - RIVETS THRO FRAMES WITH REVERSES SAME AS ORDINARY FRAMES I.E. 7 DIA

STRONGER 8" x 10" GO TO 38 BEYOND HATCHES.
BUTTS OVERLAPPED AND QUAD RIV WHERE GO
TO DOUBLE WHERE NOT EXCEEDING 38
STRONGER ANGLE 5" x 5" GO IN WAY OF HATCHES
TO 38" x 5" x 38"

12" x 5 1/2" x 44" B.A. AFF.
9" x 5" x 44" B.A. FORD

STEEL DECK 25" BETWEEN HATCHES AND AT ENDS
BUTTS SINGLE RIV
BEAMS SINGLE RIV



MARGIN PLATE 40" B.S. 40"
BUTTS DOUBLE RIV
MARGIN ANGLE 3 1/2" x 3 1/2" x 40"
TANK KNEES 36" x 36" x 42" PLANGED 31"
TANK KNEE LUGS 5" x 5" x 40" B.S. 40" 7" x 40" IN WAY OF KNEES
DOUBLE IN WAY OF WEB BEAMS
TANK SIDE LUGS 5" x 2" x 30" B.S. 30"

CENTRE GIRDER 36" x 40" TO 134" x 40" IN E.B. SPACE
BUTTS DOUBLE RIV
TOP BAR 3" x 3" x 40" TO 34" B.S. 40"
DOUBLE UNDER ENGINES 3" x 3" x 36"
BOTTOM BAR 3 1/2" x 3 1/2" x 40" SINGLE
3 1/2" x 3 1/2" x 36" DOUBLE UNDER ENGINES AND
FORWARD OF 1/2 LEN
VERT LUGS 3" x 3" x 30" SINGLE
36" E.S. x 42" B.S. TO SOLID FLOORS
36" IN B.S. TO BRACKET FLOORS
VERT LUGS DOUBLE UNDER ENGINES & BOILER BEARERS

DOUBLE BOTTOM
SOLID FLOORS 30" ON EVERY 4TH FRAME IN HOLDS, ON ALTERNATE FRAMES FORWARD OF 1/2 LEN
SOLID FLOORS ON EVERY FRAME UNDER ENGINES 30"
UNDER 4TH FRAME UNDER BOILERS 30"
UNDER BOILER BEARERS 42"
FRAME BOTTOMS 3" x 3" x 30" E.B.S. 36"
REVERSE FRAMES 5" x 2" x 36"
SINGLE REVERSES UNDER ENGINES 4 1/2" x 4 1/2" x 48"
BOILER BEARERS 5" x 5" x 42"
REVERSES IN BOILER SPACE 3" x 3" x 36"
BRACKET FLOORS 30" B.S. 36"
INTERCOSTAL 30" E.B.S. 36"

TANK TOP 50" (CARGO HANDLED BY GRAB OR STEAM SHOVEL)
TANK TOP IN ENGINE SPACE 40" B.S. 48"
FLUSH BUTTS SINGLE RIV. TANK TOP PLATING FLUSH BEAMS JOGGED UNDER SINGLE RIV
TANK TOP CENTRE STRAKE BUTTS FLUSH DOUBLE RIV

Close chanding forward to 105-114
See Notes 211/25

STEM 7 1/2" x 18"
STERN POST AROUND BORE 7" x 58"
BELOW 7 1/2" x 58" x 28"

KEEL 40" x 50" TO 50" FORWARD

BUTTS OVERLAPPED AND TREBLE RIV
WHERE 1/4" DOUBLE ELSEWHERE 1/2" WIDER
ONE BUTT AT AFTER END STREAFT
SINGLE OUTSIDE STREAFT 7/8" THICK

BOTTOM PLATING 45 FOR 1/2 LEN TO 38 AT AFT END
45 FORWARD
BUTTS OVERLAPPED AND TREBLE RIV FOR 1/2 LEN TO DOUBLE AT ENDS
BEAMS DOUBLE RIV
EXTRA INTERCOSTALS TO BE FITTED FORWARD

Approved 9/10/1925
See notes 211/25

3 P.V.
x 7 1/2"
x 25"

Hurms S. Co.

9.

Miss. Seal

D.B. HANNA

T.C. 24/2/26 for 103.

I.C. 20/3/25

Hurms S. Co. £5,

917103.

Midships Section

16. 6. 25

"D. B. Hanna"

"Geo. R. Donnan"

RETAIN



© 2021

Lloyd's Register
Foundation

004769-004777-0112

1
Midship Section.

Furness S. S. Co. Ltd.

N^{os} 91 - 103 + 138

16 " 4 " 25.

91. "D. H. Hanna" *bolingdoc*

103. "Geo. H. Donovan" *tenordoc*

138 "William Schupp" *mundoc*

V. 6. - 20. 5 - 25 for N^o 91.

" 24 " 2 " 26 " N^o 103.

" 16 " 5 - 28 " N^o 138.

004769-004777-0112

SHEER STRAIN
1/2 LEN TO
BUTTS OVER
TREBLE RIV
WHERE NOT



Lloyd's Register
Foundation