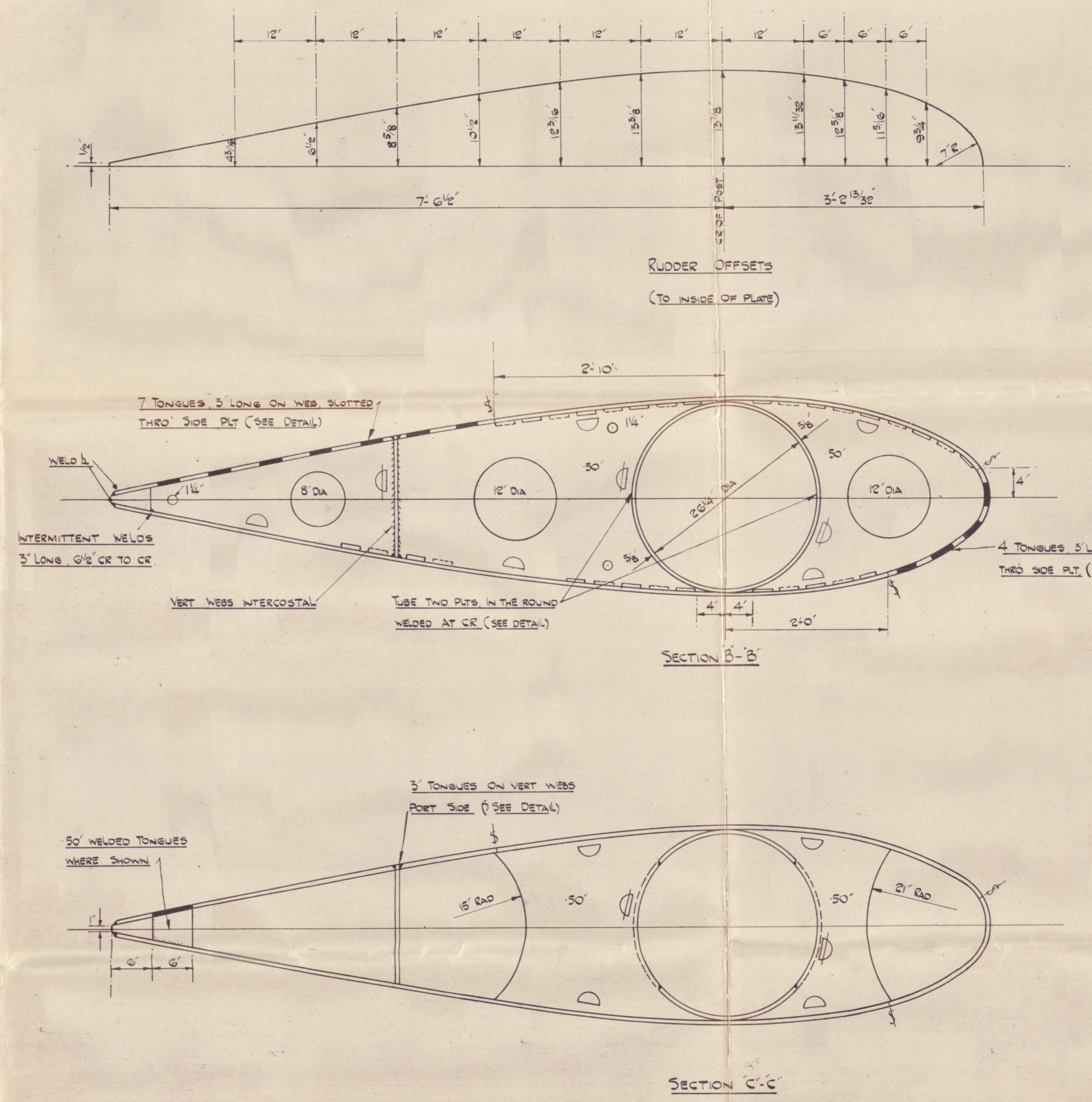
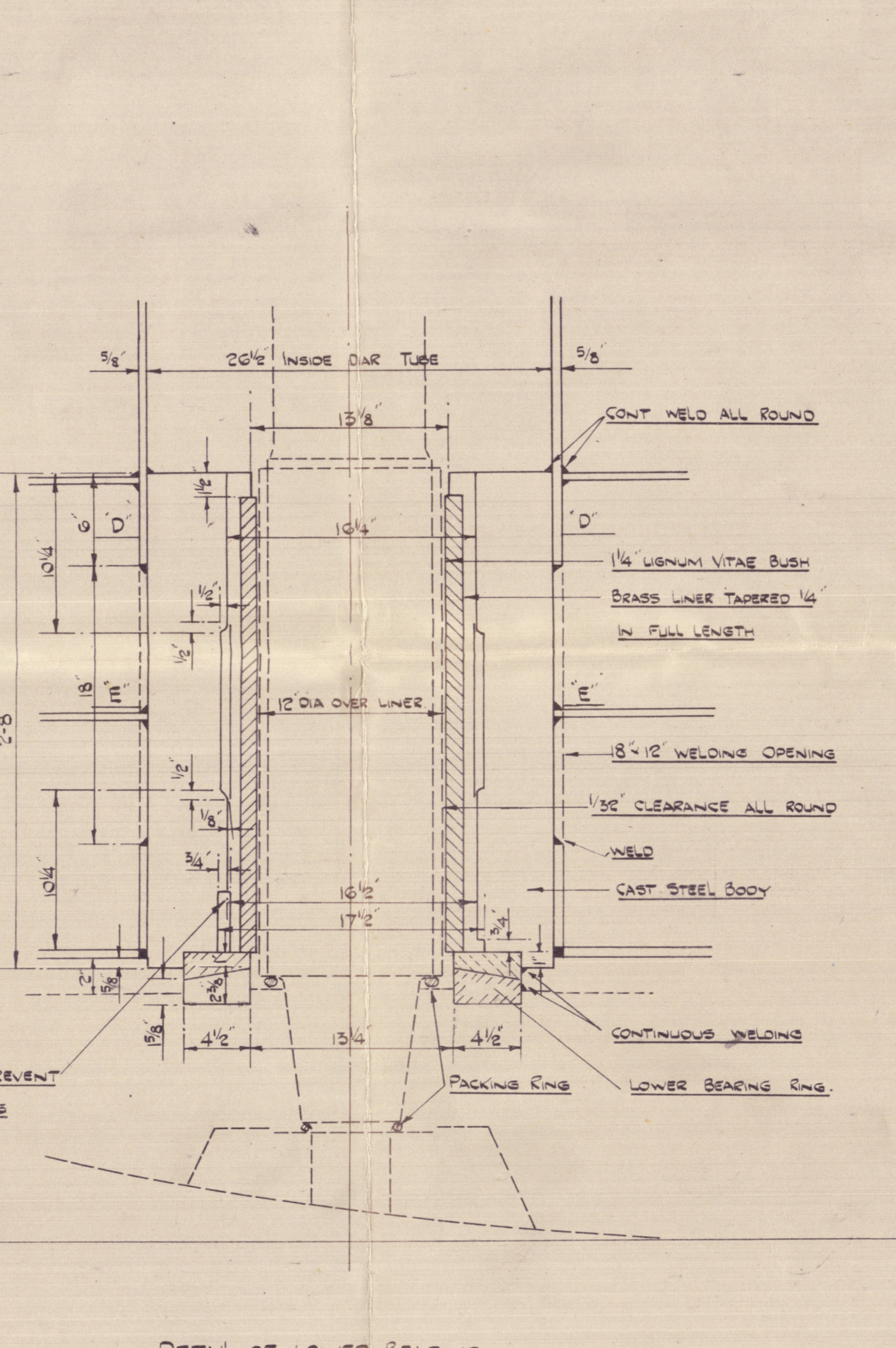
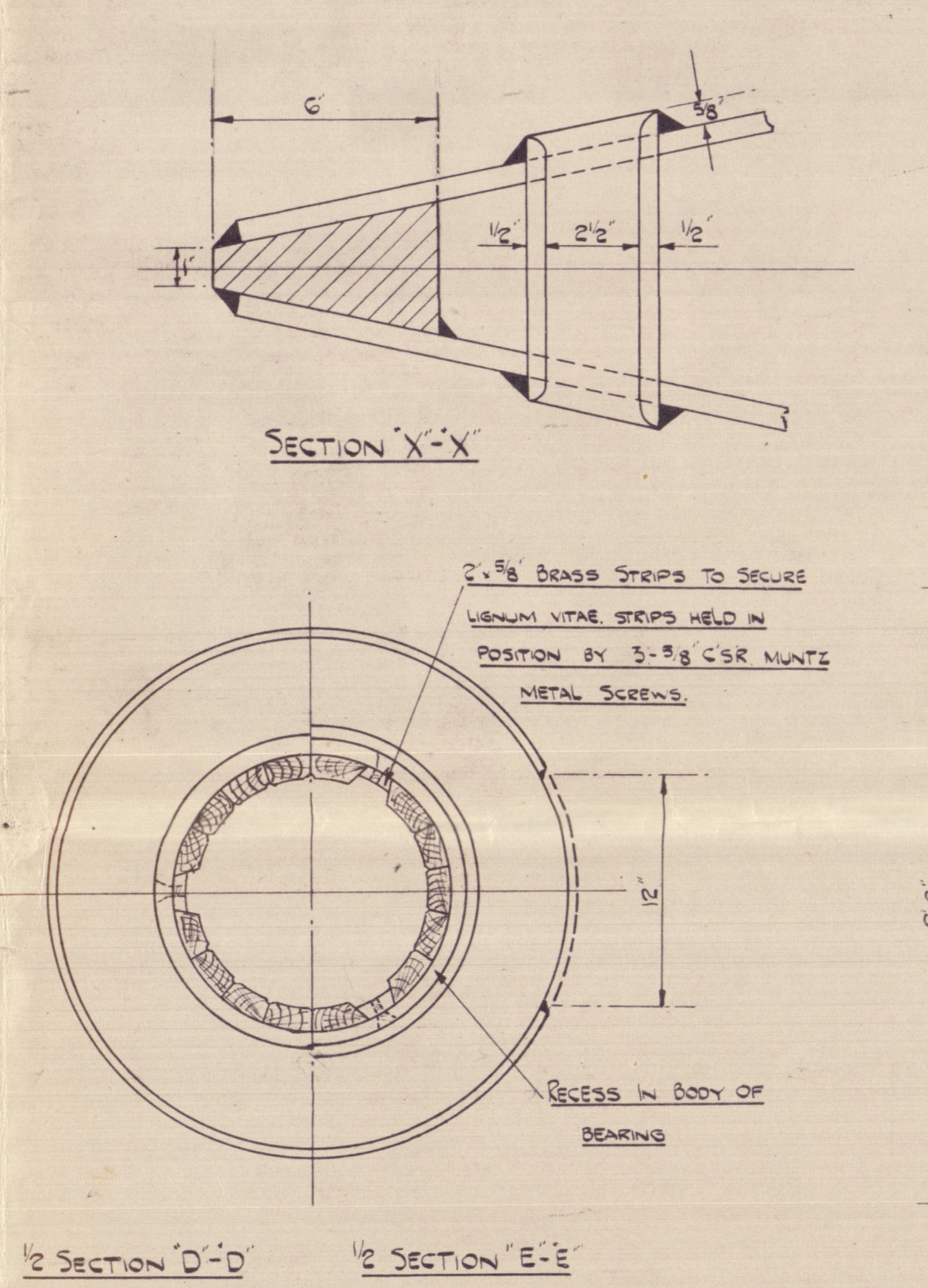
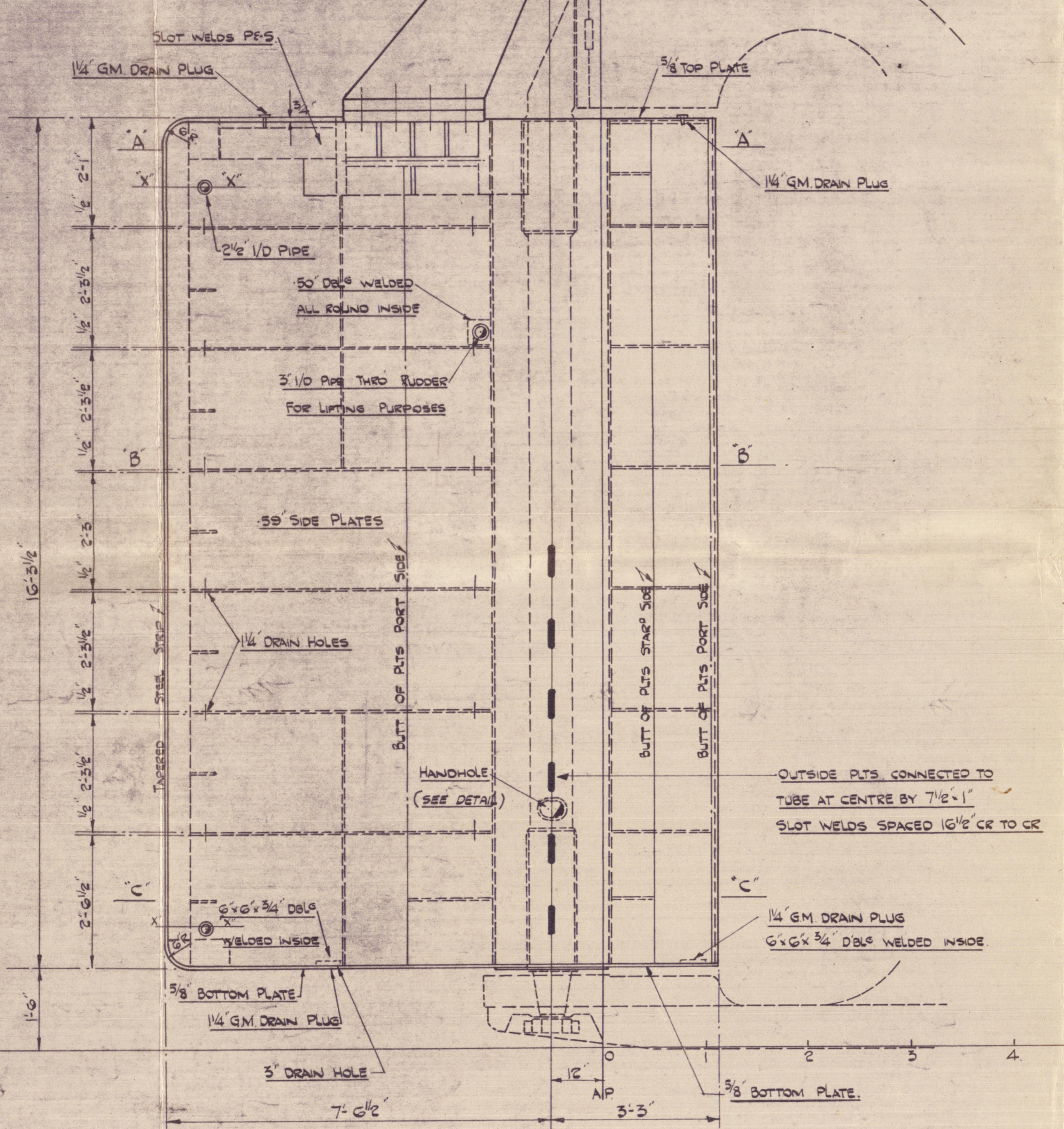
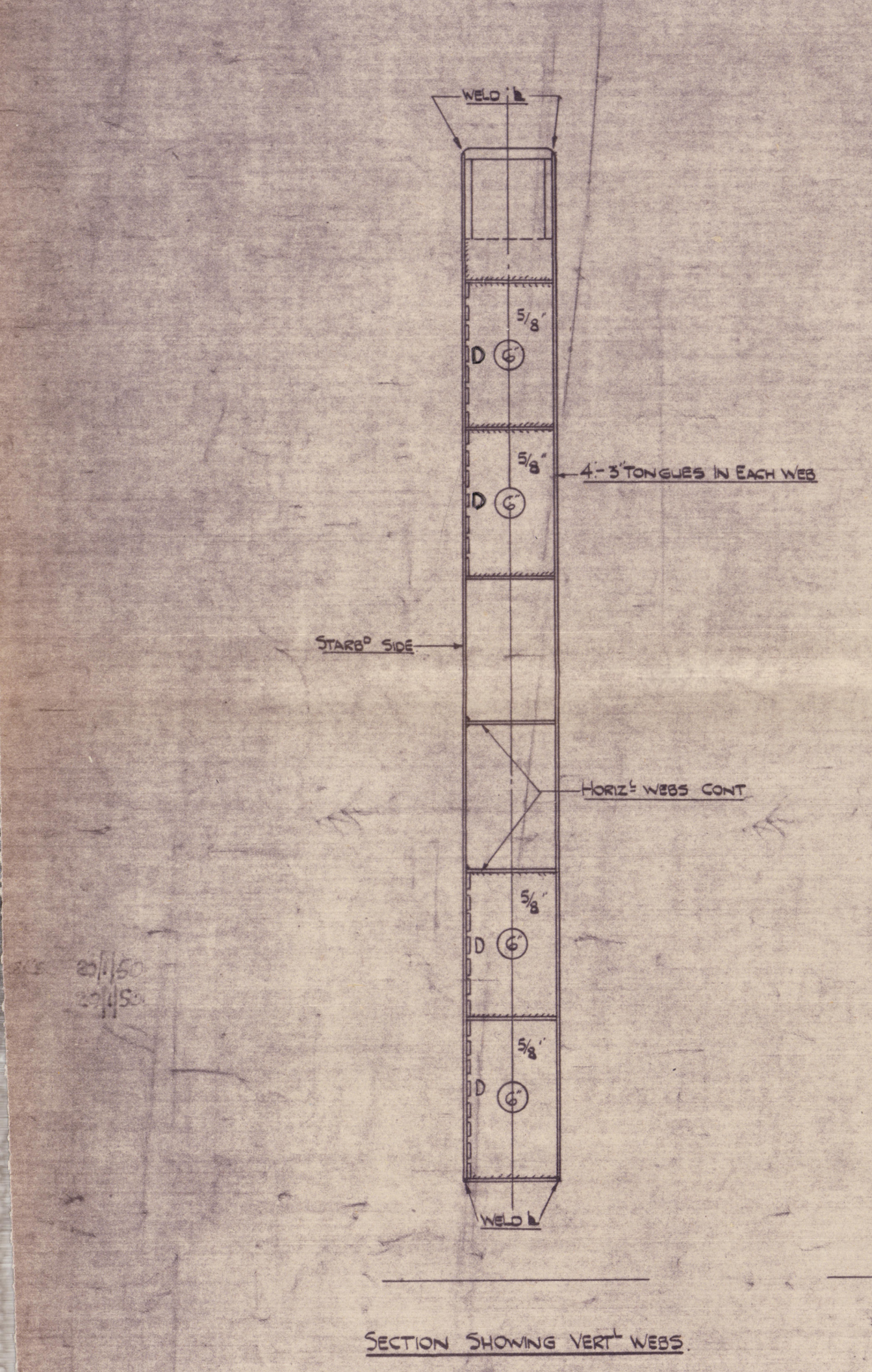


SHIP NO 97.
RUDDER PLAN.

SCALES - 1/2" = ONE FOOT & AS MARKED.

MATERIAL.
 RUDDER STOCK - FORGED INGOT STEEL.
 RUDDER BODY - MILD STEEL.
 RUDDER BEARING - AS MARKED.
 ALL TO LLOYD'S TESTS & REQUIREMENTS.

PARTICULARS.
 DIMENSIONS - 43'-0" x 6'-6" x 3'-0" MLD.
 LLOYD'S AND 384.
 SPEED OF VESSEL = 11 1/2 KNOTS.
 EFFECTIVE RUDDER AREA = 176 sq ft.
 RUDDER ANGLE = 37°
 RUDDER STOCK R&E DIA (1/16" FOR TANKERS) 10 1/2"
 ACTUAL DIA OF STOCK FITTED = 11"



WELDING.
 FULL THROAT INTERMITTENT WELDING
 ON ALTERNATE SIDES WHERE MARKED.

FULL THROAT WELDING BOTH SIDES
 CONTINUOUS WHERE MARKED.

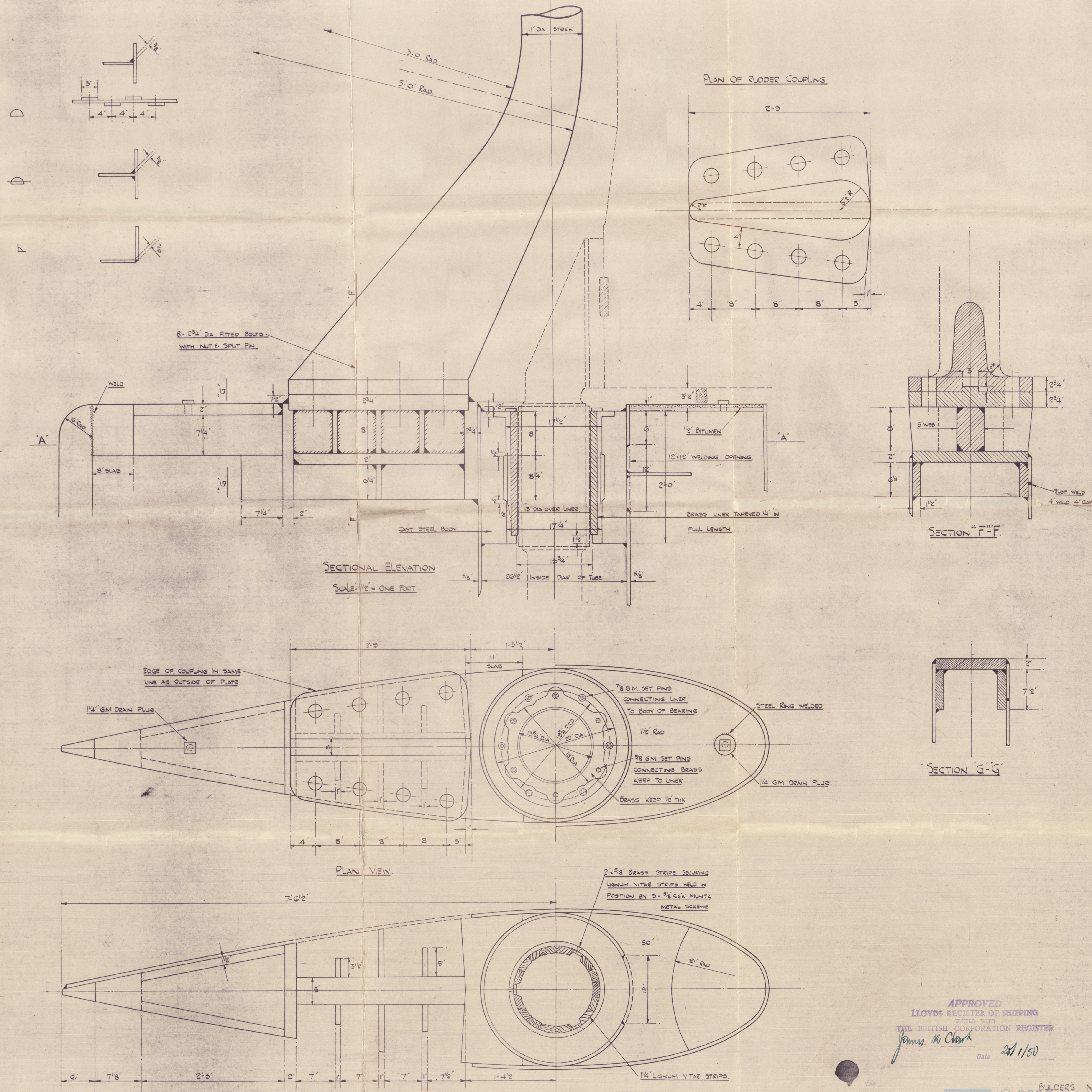
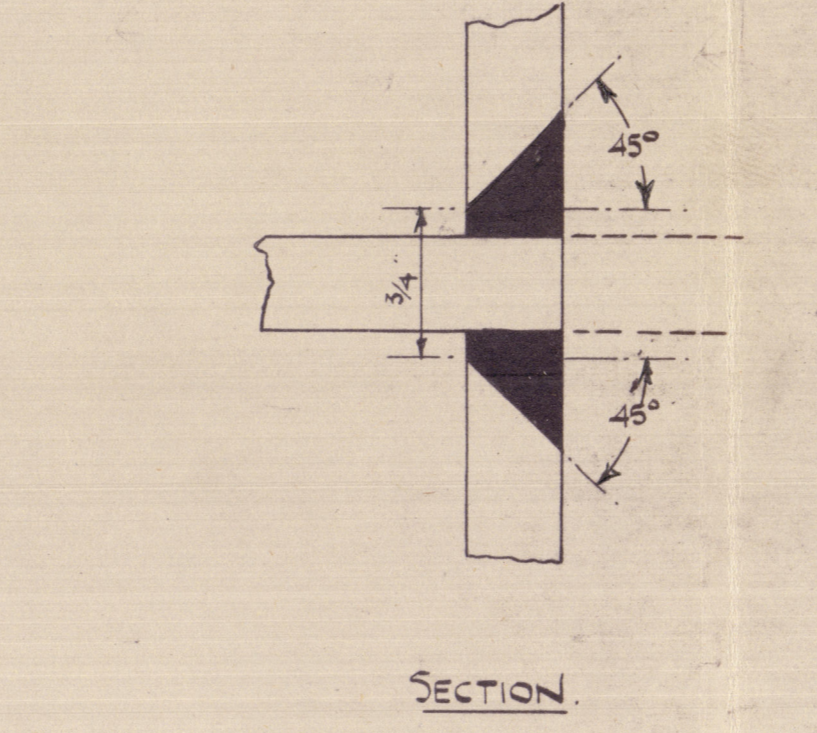
FULL THROAT WELDING ONE SIDE
 CONTINUOUS WHERE MARKED.

WELDING OF TUBE & OUTSIDE PLATES

DETAIL OF HANDHOLE
 CUT ON BOTH SIDES OF RUDDER

WELDING OF TONGUES

ELEVATION



14

BLYTHSWOOD S. B. C. L. D.

Nº 97

RUDDER

BRITISH PIONEER ★

781.
GLASGOW REPORT NO. 76849.

GLASGOW REPORT NO. 77697

BLYTHSWOOD

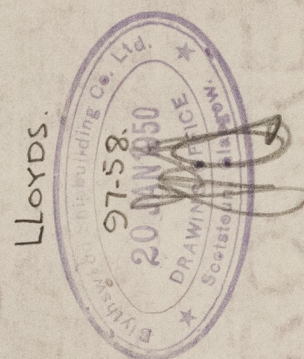
SHIP 97.

RUDDER

RECORDS DEPT.,
LONDON

7

004745, 004754-0126



SHIP Nº 97.

RUDDER PLAN.

SCALES - 1/2" = ONE FOOT & AS MARKED.

MATERIAL.

RUDDER STOCK - FORGED INGOT STEEL.