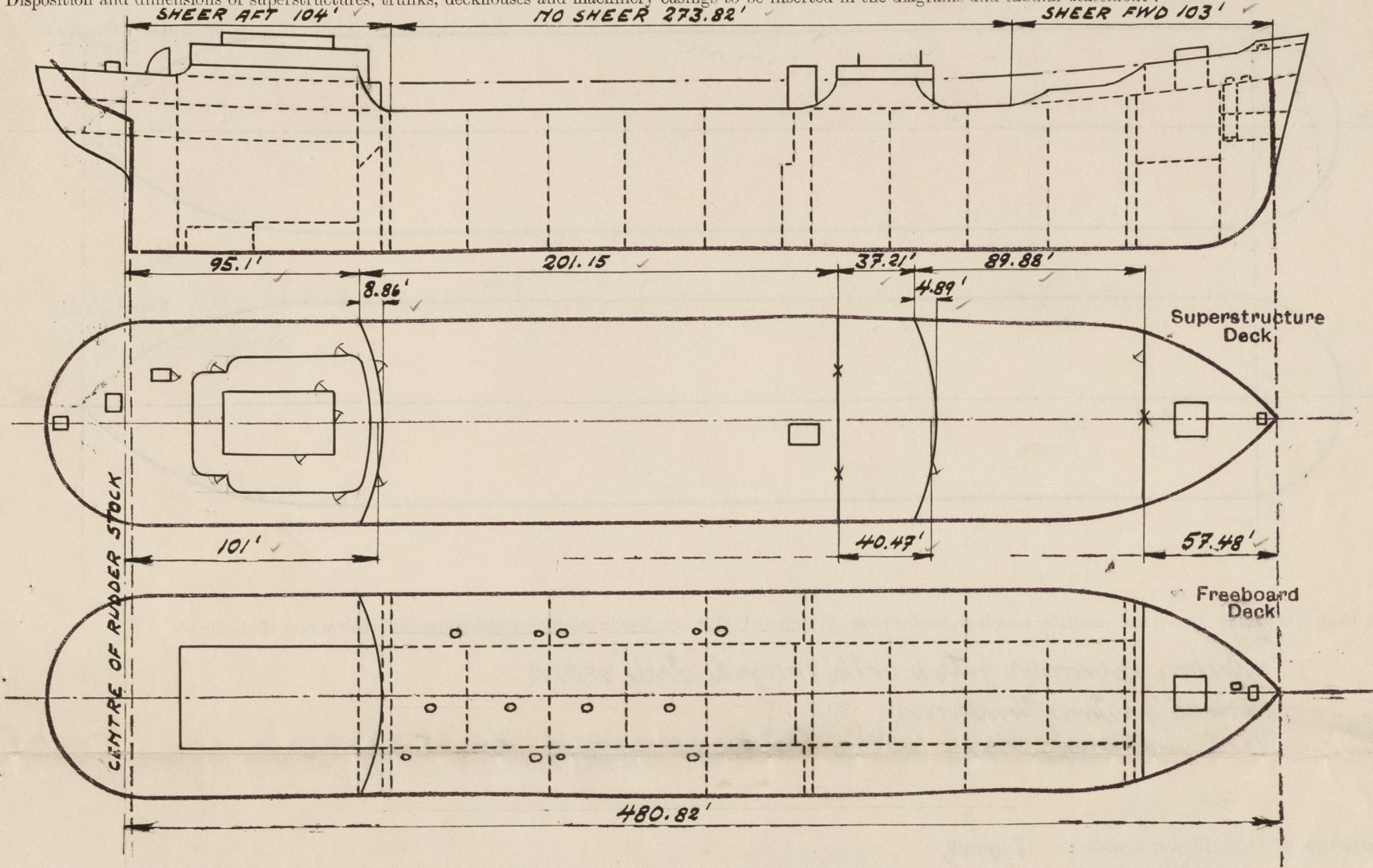


Lloyd's Register of Shipping.  
SURVEYS FOR FREEBOARD.  
(CONDITIONS OF ASSIGNMENT.)

Ship's Name *M/T "FALSTERBOHUS"* Port of Survey *Malmö*  
Official Number \_\_\_\_\_ Surveyor's Signature *Adunden A. Barring*  
Nationality and Port of Registry *Swedish, Tralleborg* Date of Survey *Whilst building*

Disposition and dimensions of superstructures, trunks, deckhouses and machinery casings to be inserted in the diagrams and tabular statement:

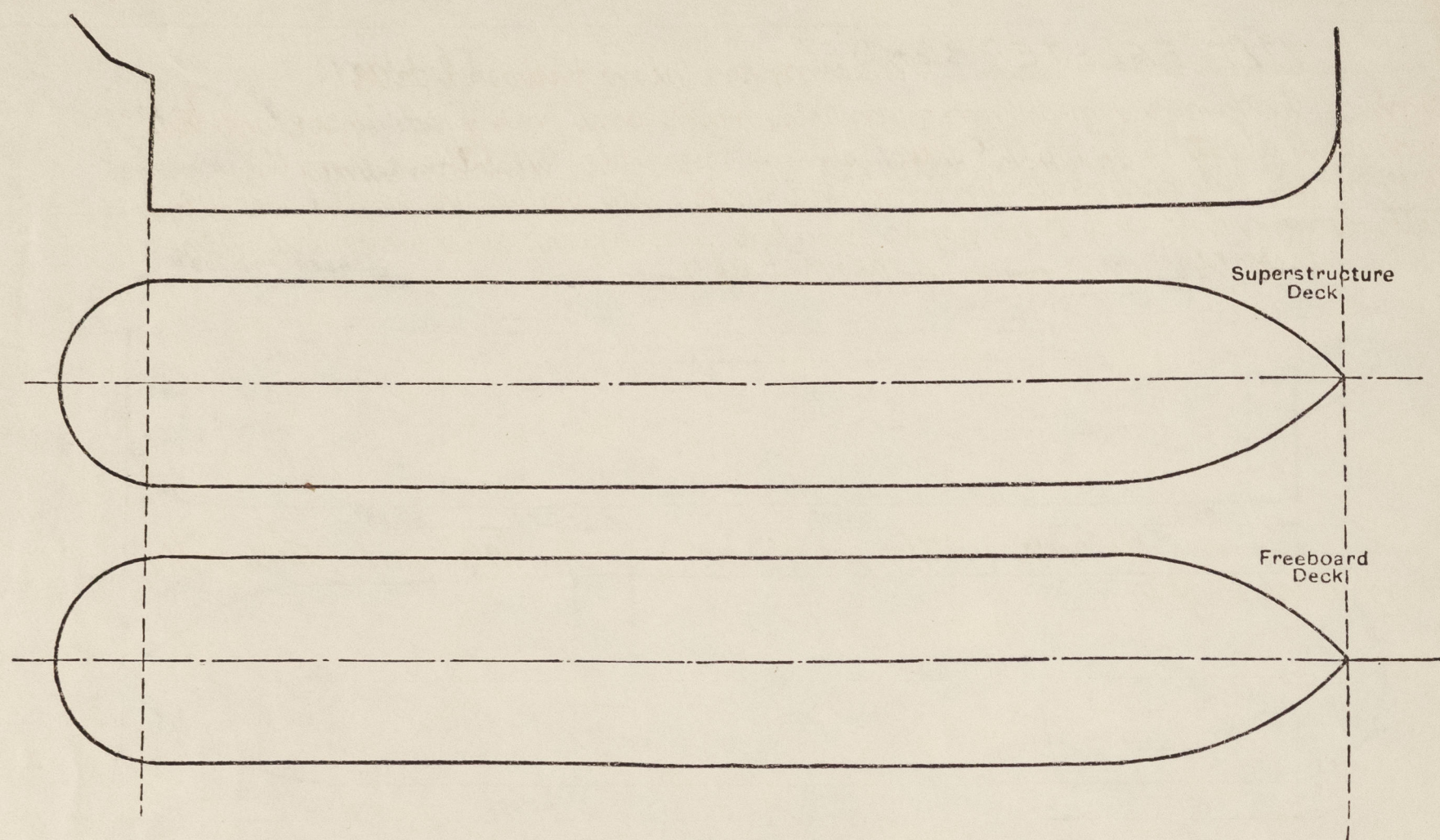


Particulars of Superstructures, Trunks, Casings, Deckhouses.								
	Coaming	Plating	Stiffeners mm.	Spacing mm.	End Attachments of Stiffeners	Size of Openings mm.	Height of Sills mm.	Height of Casings
Poop Bulkhead ... <i>slides centre</i>	<i>Pl. to W. to dk.</i>	.45" ✓	250×90×11 L	800	<i>skts. top to W. to dk. mid.</i>	1520×635	640	7.75' ✓
Raised Quarter Deck Bulkhead ...	" "	.48" ✓	250×90×14 "	800	<i>skts. T &amp; B Conn. to bridge</i>	None	✓	7.75' ✓
Bridge, After Bulkhead ...	" "	.32" - .34" ✓	75×50×8 "	830	<i>deck long. to long. top</i>	1245×940	585	7.75' ✓
Bridge, Forward Bulkhead ...	" "	.46" - .48" ✓	250×90×11.5 "	830	<i>to W. to dk. mid. to long. top</i>	1520×965	460	7.75' ✓
Forecastle Bulkhead ...	" "	.32" ✓	90×75×8.5 "	838	<i>to long. top</i>	1545×1245	410	8.25' ✓
Trunk, <i>Main Pump Room</i>	" "	.32" ✓	90×60×8 "	500 - 600	<i>to W. top</i>	1370×840	1220	9.75' ✓
Trunk, Forward ...								
Exposed Machinery Casings on Freeboard or Raised Quarter Decks ...	<i>See centre part of poop bulkhead!</i>							
Exposed Machinery Casings on Superstructure Decks <i>great deck</i>		.28" ✓	75×60×8 L	820	<i>skts. top Carr. down.</i>	None	✓	4.5' ✓
Machinery Casings within Superstructures not fitted with Class I Closing Appliances ...								
Deckhouses on <i>Poop</i> Deck Ship	<i>E</i>	.32" - .34" ✓	100×10 FB	680 - 780				
	<i>S</i>	.30" ✓	75×8.5 "	630 - 700	✓	1545×630	460	7.75' ✓
Particulars of Closing Appliances (state if capable of being manipulated from both sides).								
Poop Bulkhead ...	<i>Hinged W.T. steel door, manipulated from both sides. ✓</i>							
Raised Quarter Deck Bulkhead ...								
Bridge, After Bulkhead ...	<i>3 1/4" shifting boards in welded channels, full height. ✓</i>							
Bridge, Forward Bulkhead ...	<i>Hinged W.T. steel door, manipulated from both sides. ✓</i>							
Forecastle Bulkhead ...	<i>3 1/2" shifting boards in welded channels, full height. ✓</i>							
Exposed Machinery Casings on Freeboard or Raised Quarter Decks ...	<i>Hinged W.T. steel door, manipulated from both sides. ✓</i>							
Exposed Machinery Casings on Superstructure Decks ...	<i>(Pump room fwd.) (tele. space.)</i>							
Machinery Casings within Superstructures not fitted with Class I Closing Appliances ...	<i>(Main pump room.)</i>							
Deckhouses on <i>Poop &amp; Bridge</i> Deck Ship	<i>2" thick, solid teak doors, manipulated from both sides. ✓</i>							



# PARTICULARS OF PROTECTION TO OPENINGS, ETC.

The following diagrams should be used to indicate the positions of cargo and coaling hatchways, gangway, cargo and coaling ports, ventilators, companionways, etc., which would affect the seaworthiness of the ship :-



Particulars of fiddle, funnel and ventilator coamings, engine room skylight and other openings in machinery casing tops and their means of closing :-

Fiddle openings fitted with hinged steel covers.  
 Tunnel plating thickness .20".  
 Vent. coamings diam. 24"-36" thickness .20"-36" height 4.4'-8.6'

Particulars of Flush Bunker Scuttles :- None.

Particulars of Companionways :- Poop deck:- steel casing to rd. to poop deck plating. Door opening 1400 x 630 mm. Height of sill above steel deck 500 mm. Steel door capable of being manipulated from both sides. At sides of poop deck house:- Door opening 1545 x 630 mm. Height of sill above steel deck 460 mm. 50 mm. thick teak door, manipulated from both sides.

Particulars of Ventilators in exposed positions on freeboard and superstructure decks :-

Poop deck:- diam. 6"-9"-12". Thickness .32"-36". Height 30".  
 Fore deck:- Derrick posts of strong construction.  
 " " diam. 12". Thickness .36"-26". Height 12". Hinged to fore bulkhead.  
 Side deck:- diam. 12". Thickness .36". Height 36".  
 All vent. coamings are connected to deck plating by means of electric welding and all are provided with means for closing.

Particulars of Air Pipes in exposed positions on freeboard, raised quarter, or superstructure decks :-

Poop deck:- Gross height 30" in height.  
 Fore deck:- " 40" " " "  
 Side deck:- " 30"-36" " " "  
 All pipes provided with means for closing.

Particulars of Gangway Cargo and Coaling Ports :- None.

Falsterbohus.

Particulars of Scuppers and Sanitary Discharge Pipes :- No scuppers below freeboard deck.

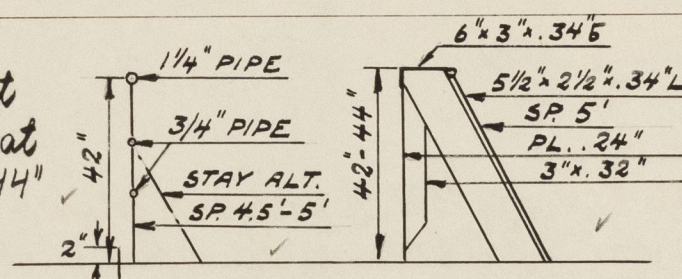
Sanitary discharge pipes from poop deck house and from poop space are led overboard about 12" above 2nd deck. (always accessible) and those from the bridge deck house led overboard above freeboard deck. All discharge pipes are fitted with storm valves and drain pipes from the poop space, also provided with non-detachable screw plugs at their inner ends.

Particulars of Side Scuttles :- All side scuttles are of strong construction and fitted with hinged deadlights.

Vertical distance of Sill of lowest Side Scuttle above top of keel About 43'.

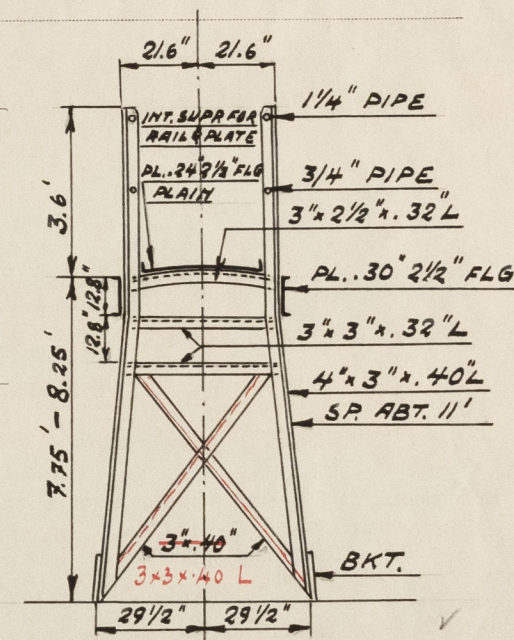
Particulars of Guard Rails :-

Ornamental on bridge deck, at fore part of poop deck and at fore end of fore well 42"-44" in height. Open rail elsewhere. See sketch.



Particulars of Gangways, Lifelines, etc. :-

The gangway supports have been reinforced by means of flat bars and the ends are well attached to the main supports.



## Particulars of Freeing Arrangements.

	Length of Bulwark	Height of Bulwark	Size of Freeing Ports	Number each side	Area each side	Rule area each side
After Well ...	Open rails.					
Forward Well ...	38' at fore end, 52' open rails.	42"-44"	2 (2 x 75)	2 Pairs	60' ✓	✓

State position of each freeing port ... (After Well :-

(F. and A. position and height above deck edge) Forward Well :- From fore bulk. 10' x 25'. Height above deck edge 2'-3'.

State whether the freeing ports are fitted with shutters, bars, or rails, and give particulars of such :-

Additional area where sheer is less than standard.



# PARTICULARS OF PROTECTION TO OPENINGS, ETC.

HATCHWAYS ON FREEBOARD AND SUPERSTRUCTURE DECKS.									
Description of Hatchway		Freeboard decks			Poop decks		Side decks		
		Cargo tanks	O.F.B. and side tanks	Cofferd.	Chain lockers and F.P.	Floors	Cargo	Side space	
Dimensions of Hatchway		5' x 3.5'	2' φ	16' x 18'	3' x 2'-8"	3'-8" x 3'-11"	4' x 2'-9"	11'-3" x 11'	2'-6" x 3'-6"
COAMINGS	Height above Deck	32 1/2"	9"	4 1/2"	9"	35"	6"	32"	15"
	Thickness	40"	46"	44"	26"	40"	40"	44"	28"
	Stiffeners	40"			26"	40"	40"	44"	28"
	Brackets, Stays	3' x 2" x 40"						6' x 3' x 44" / 7	1. 2 at FE.
HATCH BEAMS	Number								
	Spacing								
	Scantling and Sketch								
	Bearing Surface								
FORE AND AFTERS	Number								
	Spacing								
	Unsupported Lengths								
	Scantling* and Sketch								
HATCH COVERS	Material		Steel		Wood	Steel			
	Thickness	46" stamp	54"	40"	26"	34"	36"	34"	
	How fitted	3' x 2" x 40"			Hinged		Hinged		
	Bearing Surface								
Spacing of Cleats		14"-16"	17"	4"	17"	17"	12"-16 3/4"		
Number of Tarpaulins					2				
<p>*Are wood fore and afters steel shod at all bearing surfaces? <i>None</i></p> <p>Are battens and wedges efficient and in good condition? <i>Yes</i></p> <p>Are tarpaulins in good condition and in accordance with rule requirements? <i>Yes</i></p> <p>Are lashings provided in accordance with rule requirements? <i>Yes</i></p>									

Particulars of any special features:— *The vessel is longitudinally framed and all welded.*

Endorsement at first survey and at surveys for renewal of Certificate:—

The fittings and appliances are in accordance with the particulars shown on this form (or as now modified) and are in good condition.



© 2020

Lloyd's Register Foundation