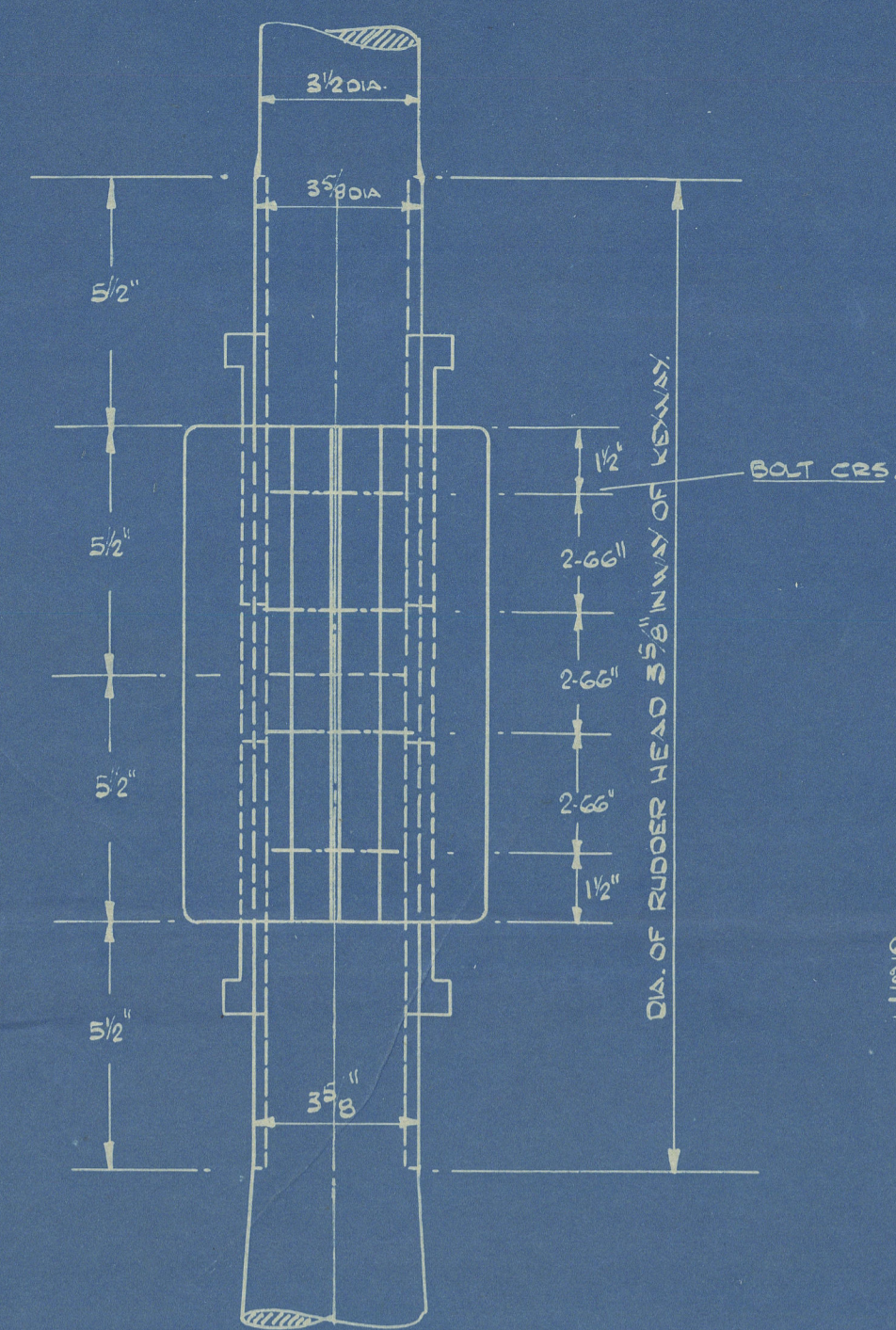
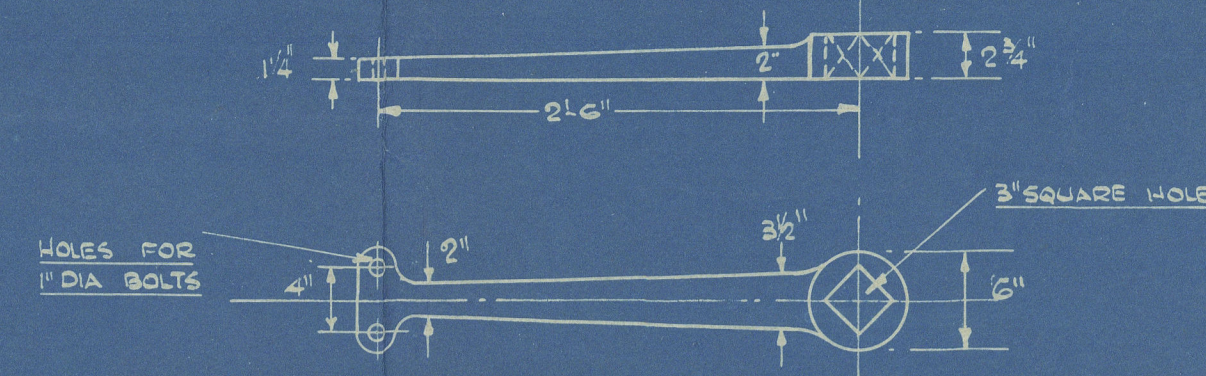


100A1 Coastal Service  
Great Britain & Ireland

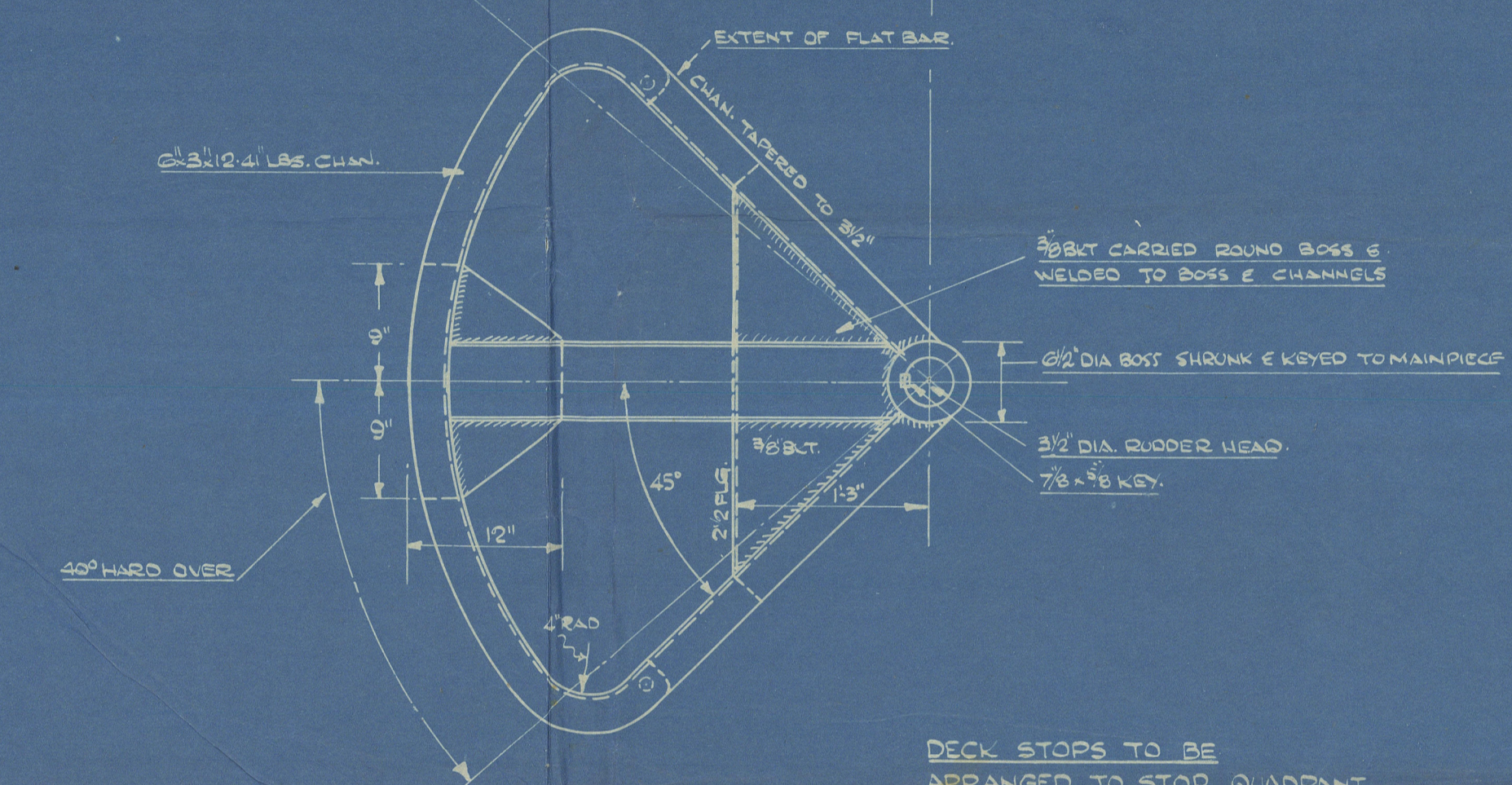
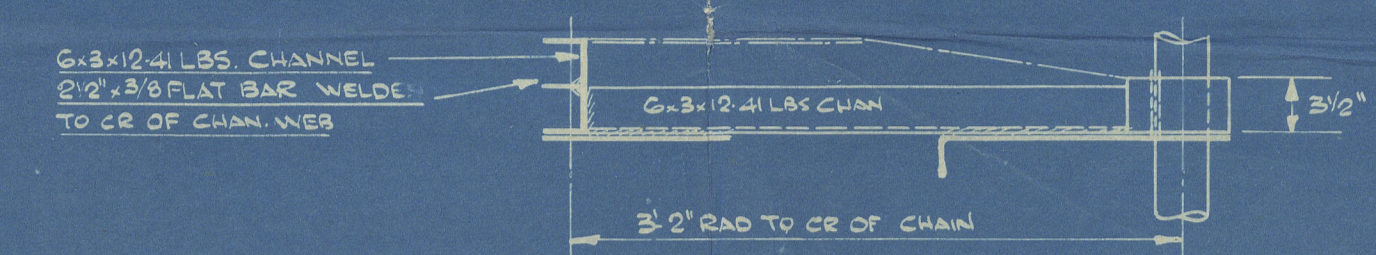
DETAIL OF MUFF COUPLING  
FOR RUDDER HEAD



DETAIL OF SPARE TILLER



DETAIL OF RUDDER QUADRANT

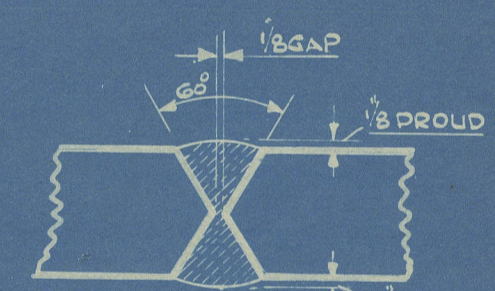


DECK STOPS TO BE  
ARRANGED TO STOP QUADRANT  
40" EACH SIDE OF CR LINE

MATERIALS

RUDDER, MAINPIECE, MUFF COUPLING	MILD STEEL
JUMPING COLLAR & QUADRANT	MILD STEEL
QUADRANT BOSS & SPARE TILLER	FORGED IRON OR MILD STEEL
STERNFRAME	MILD STEEL
PROPELLER BOSS	CAST STEEL

WELDING OF STERNFRAME BUTTS



A x D = 30.80 x 1.29	= 39.76
SPEED	9 - 10 KNOTS
DIAM OF RUDDER HEAD	3 1/2
STEERING CHAIN	9 1/8
STEERING ROD	5/8
RAD. OF QUADRANT 3'-2" TO C.R. OF CHAIN	

TO LLOYD'S REQUIREMENTS TESTS & CERTIFICATES  
FOR SURVEY CLASS 100A1+ FOR RIVER & ESTUARY SERVICE

THE STERNFRAME TO BE COMPLETELY ELECTRIC WELDED, & AFTER  
COMPLETION THE FRAME TO BE ANNEALED, ALL TO THE  
SATISFACTION OF THE SOCIETY'S SURVEYORS.

31.3.42

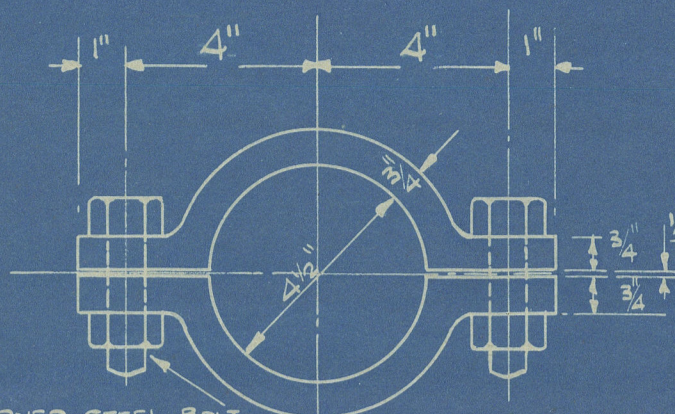
RICHARD DUNSTON LTD.  
SHIPBUILDERS,  
THORNE, YORKSHIRE

DRAWN BY	<i>mg</i>	DATE	27-3-42
TRACED BY		DATE	
CHECKED BY		DATE	
REVISIONS			
No.	DATE	PARTICULARS	

YARD No. T 393-6 DRG. No. 3225  
TITLE: STERNFRAME & RUDDER.  
SCALE: 1" = 6'-3" TO ONE FOOT

Lloyd's Register  
Foundation

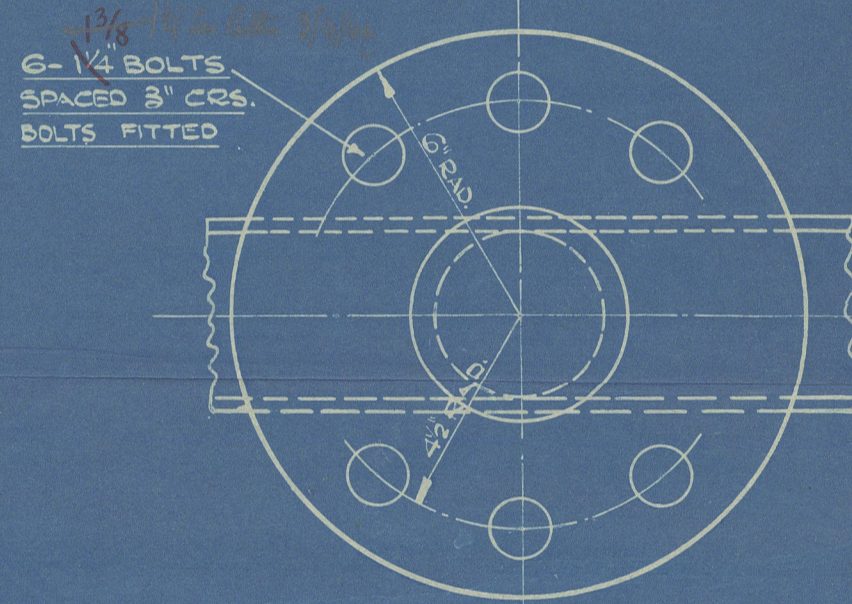
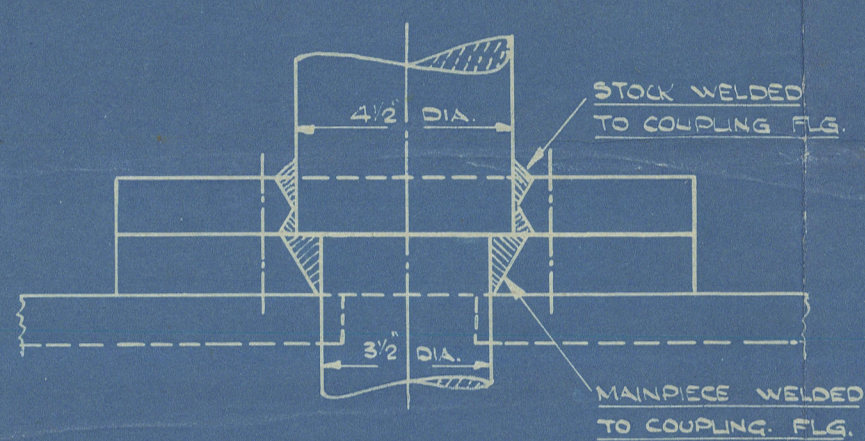
CAST IRON RUDDER BEARING  
FIXED BY 4-1/2" BOLTS  
(FITTING SHEET 80)  
GUN METAL BUSH  
IN HALVES



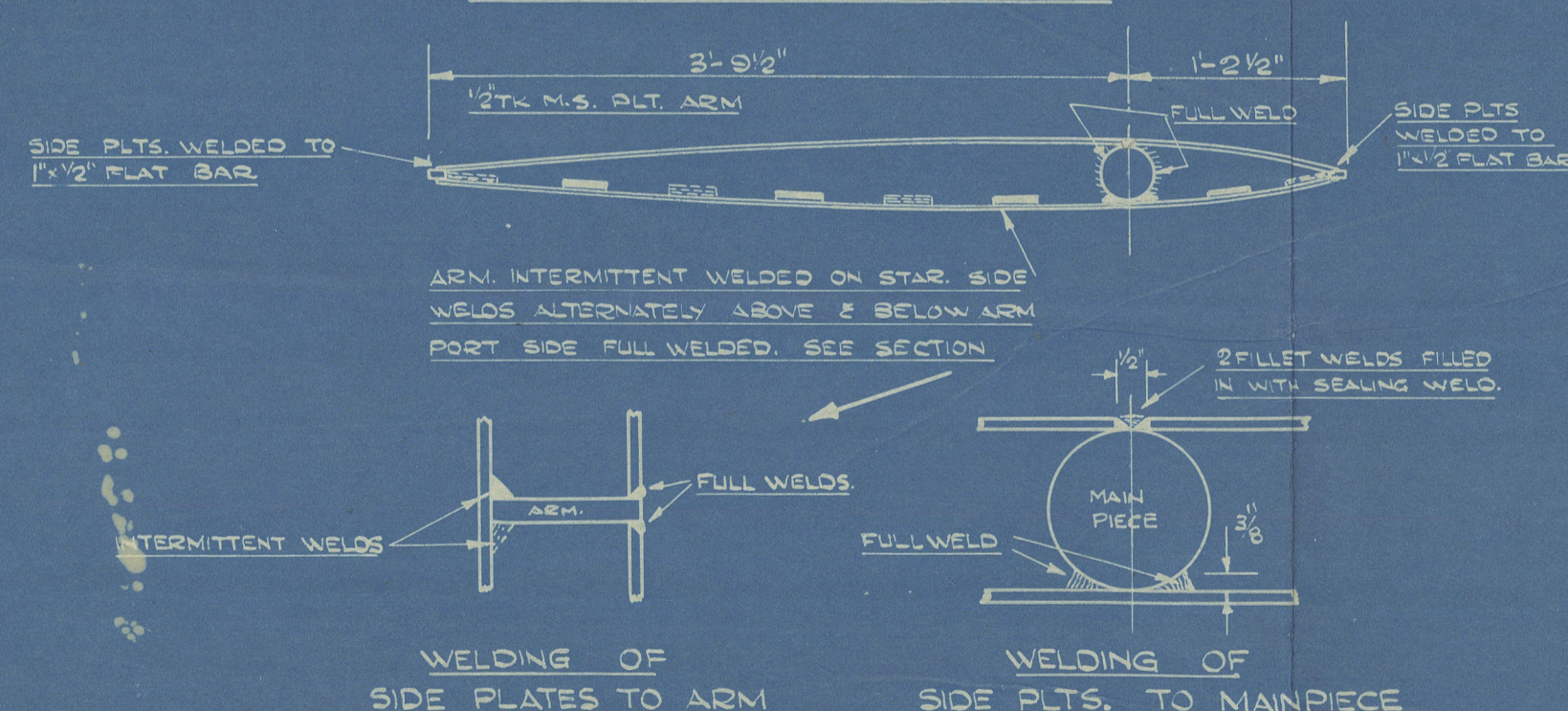
PLAN VIEW OF COLLAR

DETAIL OF W.T. BOX TO  
HOUSE RUDDER BEARING

DETAIL OF RUDDER COUPLING

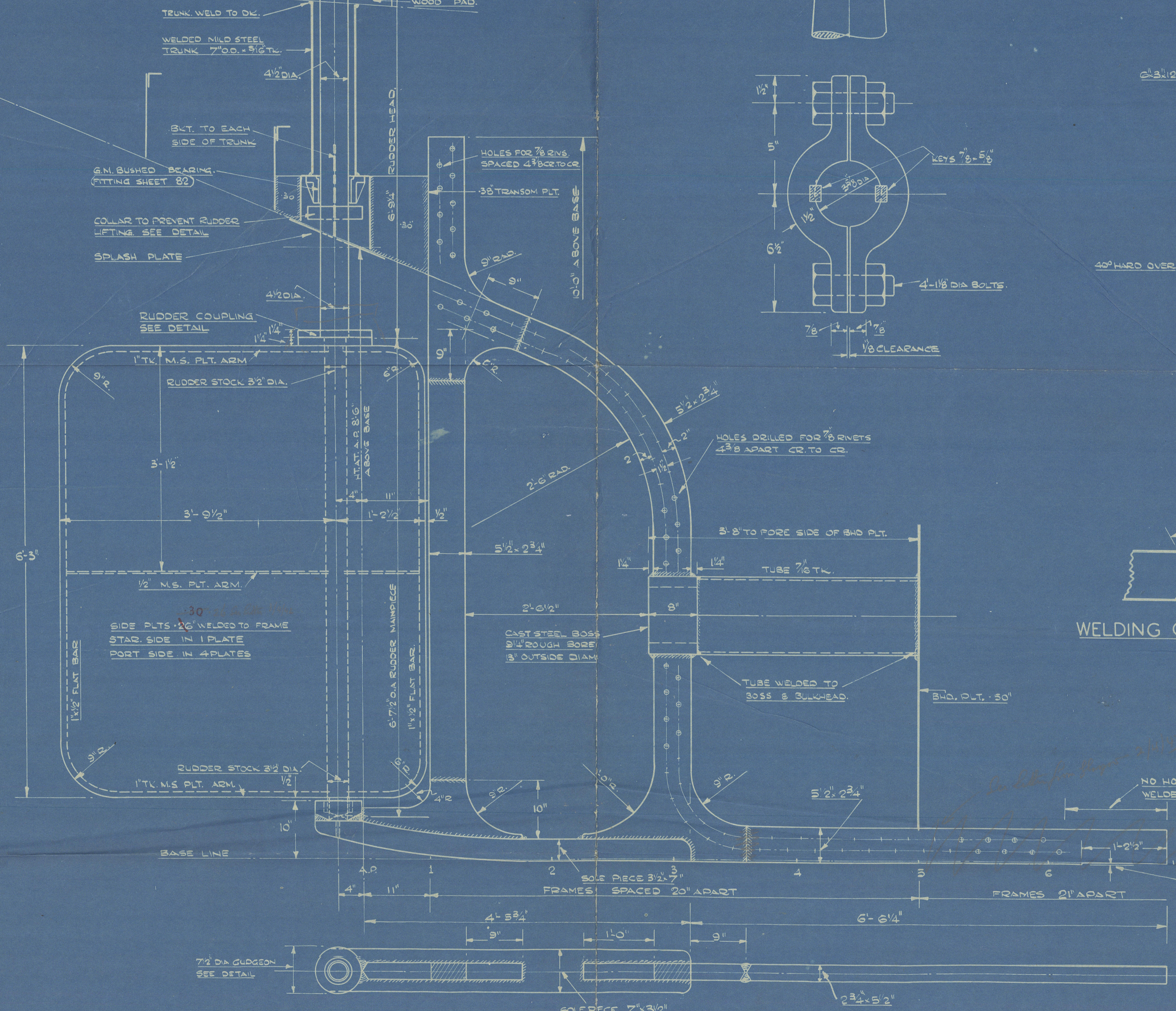


DETAIL OF RUDDER ARM

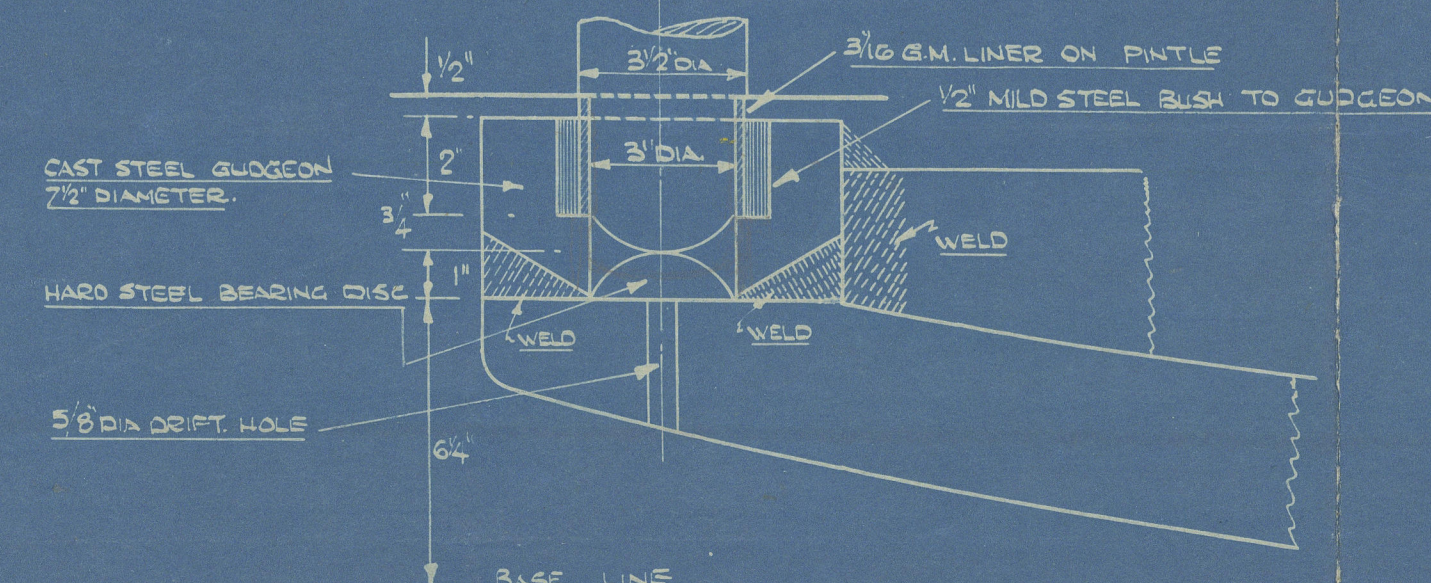


WELDING OF  
SIDE PLATES TO ARM

WELDING OF  
SIDE PLTS. TO MAINPIECE



DETAIL OF BOTTOM PINTLE & GUDGEON



Monktonombe

Transfer vessel to Land Runner

HALRONELL

EX

Sternframe & rudder.

"

"

Halronell

004727-004735-0159



© 2020

Lloyd's Register  
Foundation