

LLOYD'S REGISTER OF SHIPPING

SURVEYS FOR FREEBOARD

(CONDITIONS OF ASSIGNMENT)

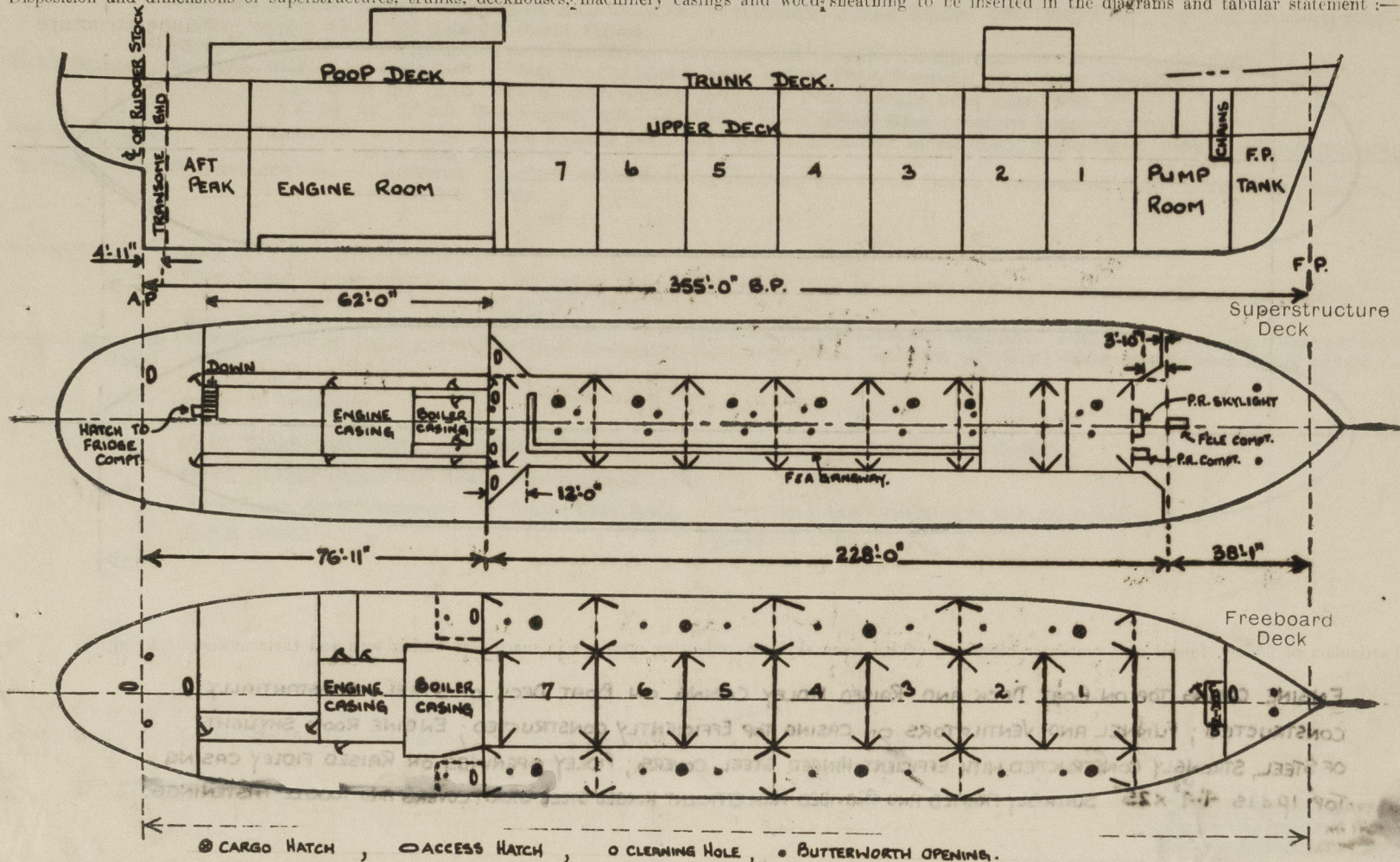
NEWCASTLE-ON-TYNE, No. 114231

Index No. 46756
(For London Office only.)46577
46587

MISC

Ship's Name **"ESSO WANDSWORTH"** Port of Survey **SOUTH SHIELDS**
 Official Number **187594** Surveyor's Signature **W.B. Dugdale.**
 Nationality and Port of Registry **BRITISH. LONDON.** Date of Survey **DURING CLASSIFICATION.**

Disposition and dimensions of superstructures, trunks, deckhouses, machinery casings and wood sheathing to be inserted in the diagrams and tabular statement:—



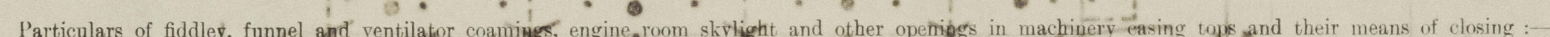
Particulars of Superstructures, Trunks, Casings, Deckhouses.

	Coaming	Plating	Stiffeners	Spacing	End Attachments of Stiffeners	Size of Openings	Height of Sills	Height, Beam to Beam
Poop Bulkhead	NONE	VERTICAL PLATING 40	6"x4"x40" I.A.E.W.	32 1/2"	BRACKETED AT TOP & BOTTOM	NONE	NONE	8'-0"
Raised Quarter Deck Bulkhead								
Bridge, After Bulkhead			NONE		BRIDGE HOUSE DETACHED FROM MAIN STRUCTURE			
Bridge, Forward Bulkhead			NONE					
Forecastle Bulkhead	NONE	VERTICAL PLATING 35	5"x3 1/2"x30" I.A.E.W.	30"	NONE	NONE	NONE	8'-0"
Trunk, Aft		LONG BULKHEADS	5"x3 1/2"x38" I.A.E.W.	24"	BRACKETED AT TOP	NONE	NONE	8'-0" AT SIDE
Trunk, Forward		POOP TO FORE	CONTINUED INTO CARGO TANKS.					
Exposed Machinery Casings on Freeboard or Raised Quarter Decks			NONE					
Exposed Machinery Casings on Superstructure Decks (IN POOP HOUSE)	35	28	3"x2 1/2"x30" I.A.E.W.	30"	BRACKETED AT TOP	5'-3"x26"	15"	7'-6"
Machinery Casings within Superstructures not fitted with Class I Closing Appliances	35	28	3"x2 1/2"x30" I.A.E.W.	30"	BRACKETED AT TOP	5'-3"x26"	12"	8'-0"
Deckhouses and Pump Room Entrances	50	40	3"x2 1/2"x28" I.A.E.W.	24"	NONE	5'-4"x26"	24"	7'-6"

Particulars of Closing Appliances. (state if capable of being manipulated from both sides)

Poop Bulkhead	NONE
Raised Quarter Deck Bulkhead	
Bridge, After Bulkhead	BRIDGE HOUSE DETACHED FROM MAIN STRUCTURE
Bridge, Forward Bulkhead	
Forecastle Bulkhead	NONE
Exposed Machinery Casings on Freeboard or Raised Quarter Decks	NONE
Exposed Machinery Casings on Superstructure Decks (IN POOP HOUSE)	4 HINGED STEEL W.T. DOORS CAPABLE OF BEING OPERATED FROM BOTH SIDES.
Machinery Casings within Superstructures not fitted with Class I Closing Appliances	4 HINGED STEEL W.T. DOORS CAPABLE OF BEING OPERATED FROM BOTH SIDES.
Deckhouses and Pump Room Entrances	1 HINGED STEEL W.T. DOOR CAPABLE OF BEING OPERATED FROM BOTH SIDES.

The following diagrams should be used to indicate the positions of cargo and coaling hatchways, gangway, cargo and coaling ports, side scuttles, scuppers, ventilators, companionways, etc., which would affect the seaworthiness of the ship :—



Particulars of Flush Bunker Scuttles :—

NONE. ✓

Particulars of Ventilators in exposed positions on freeboard and superstructure decks:—

UK ALL VENTILATORS MARKED THUS, PROVIDED WITH A HINGED STEEL W.T. COVER WITH SCREW FASTENINGS, THE REMAINDER WITH WOOD PLUGS AND CANVAS COVERS. ALL VENT COMMINGS OVER 36" HIGH SUITABLY SUPPORTED. X

Particulars of Air Pipes in exposed positions on freeboard, raised quarter, or superstructure decks :—

All air pipes fitted with wood plugs and canvas covers except those from oil fuel tanks which have wire gauze diaphragms and automatic closing arrangements.
Air pipes ~~to~~ over 36" high are suitably stayed.

Particulars of Gangway Cargo and Coaling Ports :—

NONE.

Particulars of Scuppers and Sanitary Discharge Pipes :—

SANITARY DISCHARGES :-

FROM AFTER ACCOMMODATION :- DISCHARGE THROUGH PROPSIDE PPS ABOVE UPPER DECK, FITTED WITH G.M. STORM VALVES
AT OUTER END. ✓
FROM MIDSHIP ACCOMMODATION :- 1 @ 2" P AND 1 @ 4" S, 1 @ 2" S, DISCHARGING THROUGH SHELL IN NO. 1 WING TANK ABOVE L.W.L.
PROVIDED WITH G.M. GATE VALVES AT SHELL, CAPABLE OF BEING CONTROLLED FROM UPPER DECK TOGETHER WITH 2 N.R. VALVES IN EACH LINE ABOVE UPPER DECK.

Particulars of Side Scuttles and Deadlights :—

NONE BELOW THE LEVEL OF UPPER DECK. NONE BELOW THE LEVEL OF FO'LE AND POOP DK.

NONE IN POOP FRONT AND FOCLE FRONT BULKHEADS

PUMP ROOM COMPANIONWAY ON TRUNK DECK FORD 2~10" DIA FIXED LIGHTS WITH HINGED DEADLIGHTS.

FOCAL SPACE " " " " " 2~10" " ✓ " " " "

Vertical distance of Sill of lowest Side Scuttle above top of keel

Distance from amidships to centre of lowest Side Scuttle

Particulars of Guard Rails and Bulwarks :—

BULWARKS FITTED AT SIDES OF FORECASTLE DECK EXTENDING FOR FULL LENGTH OF FO'CLE, TAPERED IN HEIGHT FROM 6'-0" AT STEM TO 3'-6" AT AFTER END, SUITABLY SUPPORTED WITH BRACKETS AT AFTER END AND INTERMEDIATE BRACKETS ABOUT 6'-0" APART. OPEN RAILS FITTED AT SIDES OF UPPER DECK AND TRUNK DECK EXTENDING FROM POOP FRONT TO FO'CLE FRONT, AROUND THE EXPOSED PORTIONS OF POOP DECK AND AT THE AFTER END OF FO'CLE DECK, FOUR TIER RAILS 3'-6" HIGH, STANCHIONS SPACED ABOUT 4'-6" APART.

Particulars of Gangways, Lifelines, etc. :—

FORE & AFTER GANGWAY (AS PER SKETCH) POOL TO MIDSHIP ACCOMMODATION DECKHOUSE
SITUATED ON TRUNK DECK. GANGWAY PROVIDED WITH 2 TIER RAILS 3'-0" HIGH.
VERTICAL SUPPORTS AS SHOWN IN SKETCH, ABOUT 10'-0" APART, WITH LONGITUDINAL
STRUTS 3"x2"x $\frac{3}{8}$ " FITTED EVERY FOURTH BAY.

SECTION THRO' FORECAST GANGWAY
ON TRUNK DK. EXTENDING FROM POOP
FRONT TO MIDSHIP ACCOMMODATION

Particulars of Freeing Arrangements.

State whether the freeing ports are fitted with shutters, bars, or rails, and give particulars of such:—

Additional area where sheer is less than standard.

{ After Well :—
{ Forward Well :—

(ALL OPEN RAILS)

ters, bars, or rails, and give particulars of

NONE

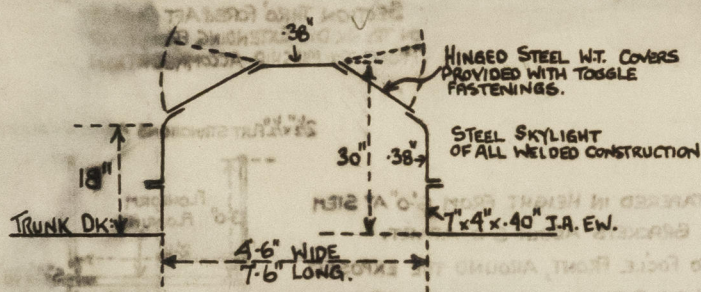
PARTICULARS OF PROTECTION TO OPENINGS, ETC.

HATCHWAYS ON FREEBOARD AND SUPERSTRUCTURE DECKS.								
			TRUNK DK: OIL CARGO	UPPER DK: OIL CARGO	TRUNK DK: COFFERDAM	POOP DK: POOP TWEEN DECK	POOP DK: STEERING GEAR COMPT.	FO'LE DK: REFRIG. COMPT.
Description of Hatchway			7 OFF CIRCULAR	8 OFF MANHOLE	2 OFF MANHOLE	2 OFF CIRCULAR	1 OFF CIRCULAR	1 OFF MANHOLE
Dimensions of Hatchway			2'-9" DIA.	25" x 19"	25" x 19"	24" DIA.	31" DIA.	32" x 36"
COAMINGS	Height above Deck	...	24" ✓	8" ✓	8" ✓	24" ✓	24" ✓	24" ✓
	Thickness	Sides	.44	.44	.44	.44	.44	.44
	Stiffeners	Ends	NONE	NONE	NONE	NONE	NONE	NONE
	Brackets, Stays	Ends	NONE	NONE	NONE	NONE	NONE	NONE
HATCH BEAMS	Number	...	NONE	NONE	NONE	NONE	NONE	NONE
	Spacing	...	NONE	NONE	NONE	NONE	NONE	NONE
	Seantling and Sketch	...	NONE	NONE	NONE	NONE	NONE	NONE
	Bearing Surface	...	NONE	NONE	NONE	NONE	NONE	NONE
FORE AND AFTERS	Number	...	NONE	NONE	NONE	NONE	NONE	NONE
	Spacing	...	NONE	NONE	NONE	NONE	NONE	NONE
	Unsupported Lengths	...	NONE	NONE	NONE	NONE	NONE	NONE
	Seantling and Sketch	...	NONE	NONE	NONE	NONE	NONE	NONE
HATCH COVERS	Material	...	HINGED STEEL	HINGED STEEL	HINGED STEEL	HINGED STEEL	HINGED STEEL	HINGED STEEL
	Thickness44	.46	.40	.42	.40	.44
	How fitted	...	O.T. ✓	O.T. ✓	W.T. ✓	W.T. ✓	W.T. ✓	W.T. ✓
	Bearing Surface	...	NONE	NONE	NONE	NONE	NONE	NONE
Spacing of Cleats			21" APART	12" APART	12" APART	26" APART	18" APART	12" APART
Number of Tarpaulins			—	—	—	—	—	—

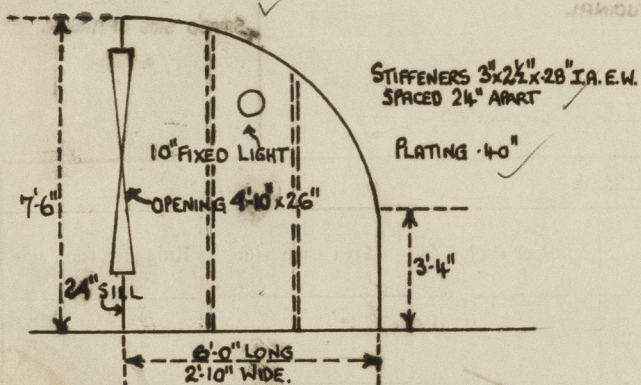
*Are wood fore and afters steel shod at all bearing surfaces?
 Are battens and wedges efficient and in good condition?
 Are tarpaulins in good condition and in accordance with rule requirements?
 Are lashings provided in accordance with rule requirements?
 Are wood covers fitted with galvanised end bands?

Particulars of any special features:— (Timber Deck-cargo Fittings, Skylights, Sewage Systems, Ash Ejectors, Rubbish Shoots, etc.)

~ PUMP ROOM SKYLIGHT ~ ON TRUNK DECK FORWARD.



~ PUMP ROOM COMPANIONWAY ~ ON TRUNK DECK FORWARD.



~ COMPANIONWAY TO FORECASTLE SPACE ~ SIMILAR TO ABOVE WITH EXCEPTION THAT OPENING IS 4'-6" x 2'-6" WITH 24" SILL.

MISCELLANEOUS DOORS:~

CHAIN LOCKER (IN FO'LE SPACE) 1 OPENING 3'-0" x 2'-4" WITH 25" SILL. FITTED WITH HINGED STEEL W.T. DOOR CAPABLE OF BEING OPERATED FROM BOTH SIDES. ✓

ACCESS DOOR TO STEERING GEAR COMPT (IN POOP SPACE)
 1 OPENING STARBOARD 5'-6" x 2'-6" WITH 12" SILL. FITTED WITH HINGED STEEL W.T. DOOR CAPABLE OF BEING OPERATED FROM BOTH SIDES. ✓

MISCELLANEOUS HATCHWAYS:~

HATCHES ON UPPER DK IN POOP SPACE:~
 OIL FUEL BUNKERS:~ 1 P & 1 S MANHOLES 25" x 19" HEIGHT OF COAMING 8" x .44" AND PROVIDED WITH A HINGED STEEL O.T. COVER WITH TOGGLE FASTENINGS. ✓

AFTER PEAK TANK:~ 1 OFF MANHOLE 25" x 19", HEIGHT OF COAMING 8" x .44" AND PROVIDED WITH A HINGED STEEL W.T. COVER WITH TOGGLE FASTENINGS. ✓

TRANSOME SPACE:~ 1 OFF MANHOLE 25" x 19", HEIGHT OF COAMING 8" x .44" AND PROVIDED WITH A HINGED STEEL W.T. COVER WITH TOGGLE FASTENINGS. ✓

HATCHES ON UPPER DK IN FO'LE SPACE:~
 FORE PEAK TANK:~ 1 OFF MANHOLE 25" x 19", HEIGHT OF COAMING 8" x .44" AND PROVIDED WITH A HINGED STEEL W.T. COVER WITH TOGGLE FASTENINGS. ✓

BUTTERWORTH OPENINGS:~

TRUNK DK (CENTRE CARGO TANKS)	14 OFF	12 1/2" DIA	.85" COVER	10-3/4" BOLTS.
(COFFERDAM)	2 OFF	"	"	"
UPPER DK (WING CARGO TANKS)	14 OFF	"	"	"
UPPER DK (IN POOP SPACE)	2 OFF	"	"	"

TANK CLEANING HOLES:~

FORECASTLE DK (TO F.P. TANK)	2 OFF	10 1/2" DIA	.85" COVER	10-3/4" BOLTS.
UPPER DK (" " ")	2 OFF	"	"	"
UPPER DK (TO P.T. TANK)	2 OFF	"	"	"