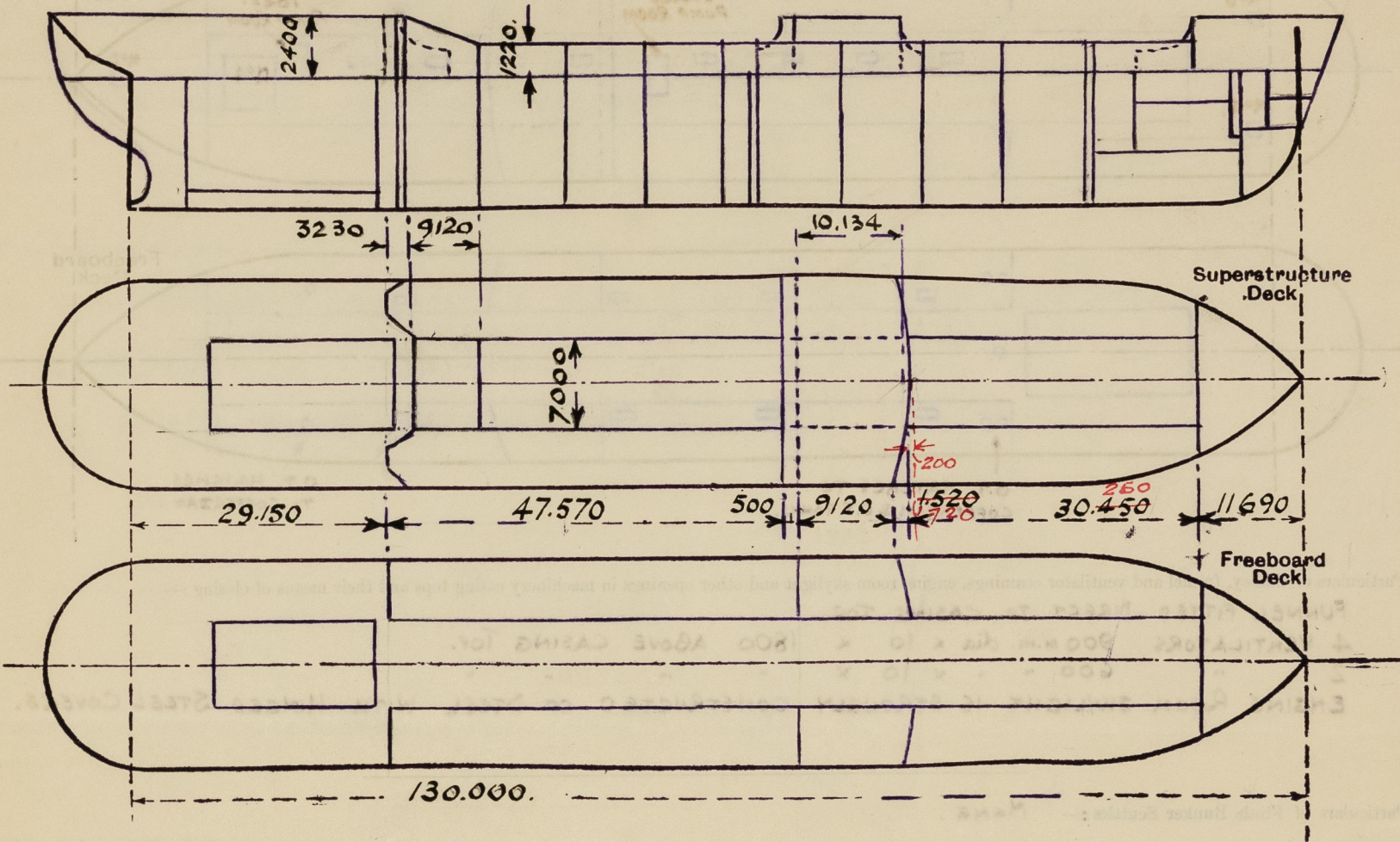


Lloyd's Register of Shipping.
SURVEYS FOR FREEBOARD.
(CONDITIONS OF ASSIGNMENT.)

Ship's Name M/T. "SAMEIRO" Port of Survey LISBON (ARSENAL DO ALFETTE.)
Official Number Surveyor's Signature J. Simon.
Nationality and Port of Registry PORTUGUESE LISBON Date of Survey WHILE BUILDING.

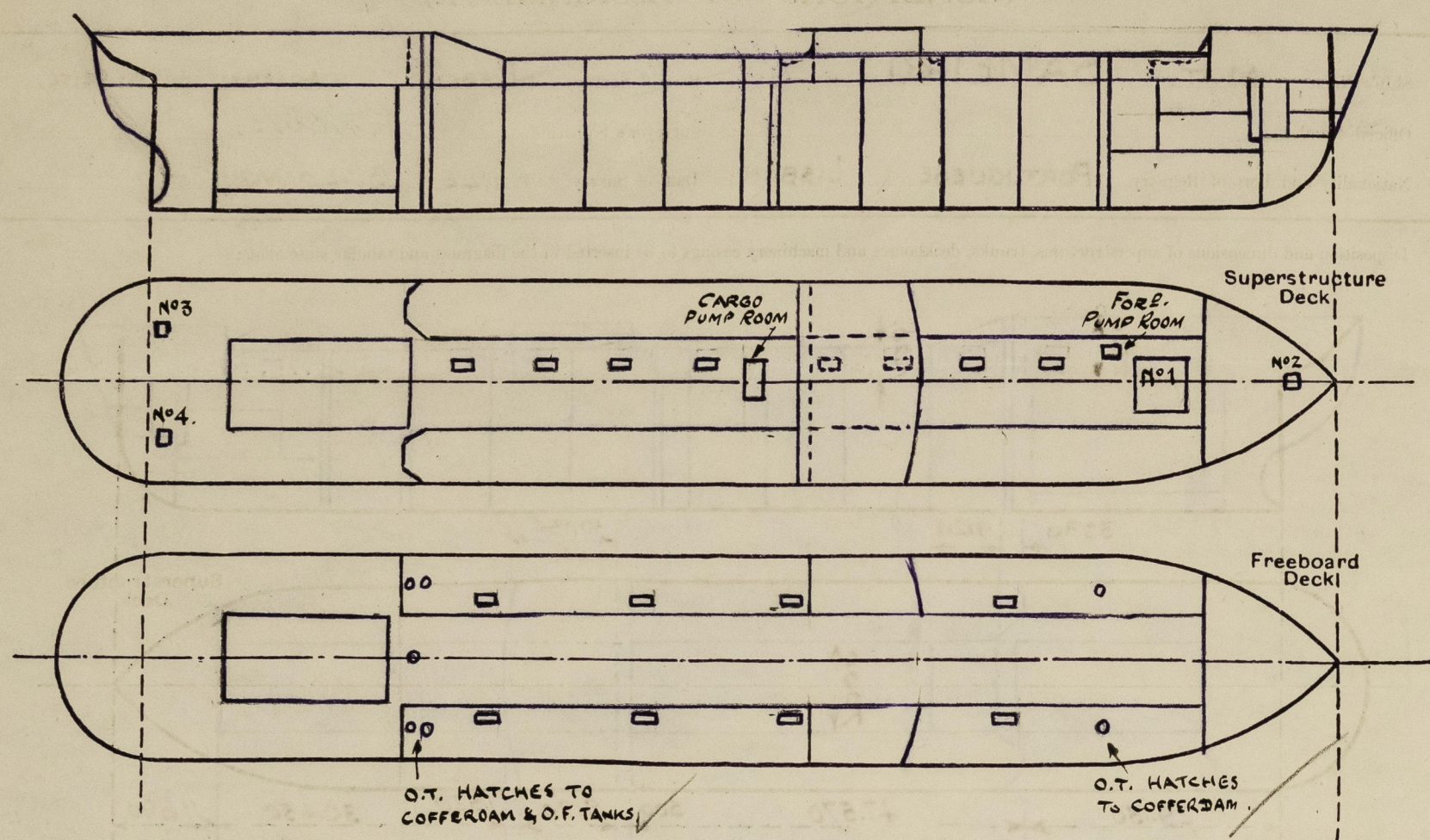
Disposition and dimensions of superstructures, trunks, deckhouses and machinery casings to be inserted in the diagrams and tabular statement :—



Particulars of Superstructures, Trunks, Casings, Deckhouses.								
	Coaming	Plating	Stiffeners	Spacing	End Attachments of Stiffeners	Size of Openings	Height of Sills	Height of Casings
Poop Bulkhead ...	12	11	B.A. 229 x 89 x 13	760	LUGGED TOP WELDED TO DK. AT BOTT.	X	X	2400.
Raised Quarter Deck Bulkhead ...	X							
Bridge, After Bulkhead ...	10	7.5	O.A. 100 x 75 x 8	740 AT SIDES, 700 AT CENTRE TO LONG'S TOP	FULL HEIGHT CORR. TO LONG'S TOP	2-1220 x 915	610	2400.
Bridge, Forward Bulkhead ...	12	11	B.A. 203 x 89 x 13	do. do. do.	CONN. TO LONG'S TOP WELDED TO DK. BOTT.	2-1620 x 610	380	2400.
Forecastle Bulkhead ...	10	7.5	O.A. 100 x 75 x 8	760	NONE	2-1220 x 915	610	2400.
Trunk, Aft ... SEE SKETCH...	17.5	17.5	LONG. B.A. 203 x 89 x 11	610	BRACKETS AT ENDS EA. TANK	NONE	X	1220
Trunk, Forward " " ...	"	"	"	"	"	"	"	"
Exposed Machinery Casings on Freeboard or Raised Quarter Decks ...	X							
Exposed Machinery Casings on Superstructure Decks ...	8.5	7.5	O.A. 120 x 75 x 8	760	BRACKETS TOP	NONE	X	3400
Machinery Casings within Superstructures not fitted with Class I Closing Appliances ...	X							
Deckhouses on Flush Deck Ships ...	X							
Particulars of Closing Appliances (state if capable of being manipulated from both sides).								
Poop Bulkhead ...	NO OPENINGS							
Raised Quarter Deck Bulkhead ...	X							
Bridge, After Bulkhead ...	TWO - WOOD STORM BOARDS IN WELDED CHANNELS.							
Bridge, Forward Bulkhead ...	TWO - W.T. STEEL HINGED DOORS. opening both sides							
Forecastle Bulkhead ...	TWO - WOOD STORM BOARDS IN WELDED CHANNELS.							
Exposed Machinery Casings on Freeboard or Raised Quarter Decks ..	X							
Exposed Machinery Casings on Superstructure Decks ...	X							
Machinery Casings within Superstructures not fitted with Class I Closing Appliances ...	X							
Deckhouses on Flush Deck Ships ...	X							

PARTICULARS OF PROTECTION TO OPENINGS, ETC.

The following diagrams should be used to indicate the positions of cargo and coaling hatchways, gangway, cargo and coaling ports, ventilators, companionways, etc., which would affect the seaworthiness of the ship:—



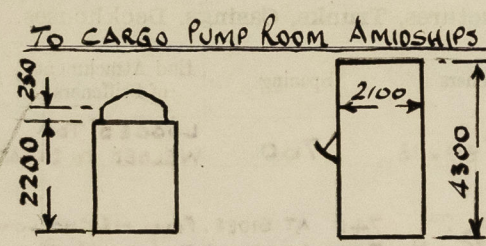
Particulars of Riddle, funnel and ventilator coamings, engine room skylight and other openings in machinery casing tops and their means of closing:—

- FUNNEL FITTED DIRECT TO CASING TOP.
- 4 VENTILATORS 900 M.M. DIA X 10 X 1800 ABOVE CASING TOP.
- 2 " 600 " X 10 X " " " " " " " "
- ENGINE ROOM SKYLIGHT IS STRONGLY CONSTRUCTED OF STEEL WITH HINGED STEEL COVERS.

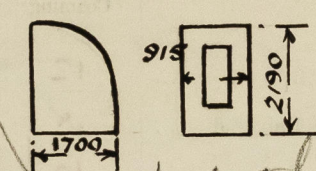
Particulars of Flush Bunker Scuttles:— NONE.

Particulars of Companionways:—

- PLATING 6 M.M.
- STIFFENERS 75 X 70 X 6
- SPACED ENDS 750
- " SIDES 840



TO FORWARD PUMP ROOM



Particulars of Ventilators in exposed positions on freeboard and superstructure decks:—

- | Deck | Position | Dimensions | Notes |
|-----------------|----------|--------------------------|--|
| FORECASTLE DECK | ONE | 300 DIA. X 10 X 915 HIGH | TO STORE ROOM FORWARD. |
| " | ONE | 600 " X 11 X 915 " | TO CARGO HOLD. |
| FREEBOARD DECK | ONE | 500 " X 10 X 915 " | TO FORWARD PUMP ROOM. |
| " | TWO | 750 " X 10 X 8.600 " | TO CARGO PUMP ROOM (SAMSON POSTS - EFF. SUPPORTED) |
| TRUNK TOP | ONE | 600 " X 11 X 915 " | TO CARGO HOLD. |
| BRIDGE DECK | FIVE | 150 " X 7.5 X 760 " | TO BRIDGE SPACE STORES. |
| POOP DECK | 25 | 150 " X 7.5 X 760 " | ACCOM. IN POOP SPACE. (EXTRACTOR TYPE.) |
| " | 5 | 150 " X 7.5 X 760 " | " " " " " " |
| " | 4 | 250 " X 8.5 X 760 " | STEERING ENG. RM. AND STORES AFT. IN POOP SPACE |
| " | ONE | 250 " X 8.5 X 760 " | STORE ON 2 ND DECK. |

— ALL PROVIDED WITH WOOD PLUGS AND CANVAS COVERS. —

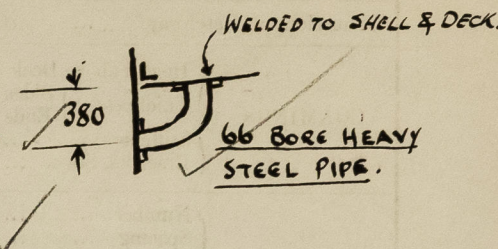
Particulars of Air Pipes in exposed positions on freeboard, raised quarter, or superstructure decks:—

- AIR PIPES FROM CARGO TANKS LED UP MASTS.
- AIR PIPES FROM O.F. TANKS & COFFEROAMS 75 DIA X 1000 HIGH. ON FREEBOARD DECK.
- AIR PIPES FROM O.F., FW. & PEAK TANKS 75 DIA X 500 " ON SUPERSTRUCTURE DECKS.
- AIR PIPES FROM STERN TANK, D.B. COFF. & COFF. ABAFT CHAIN LOCKER 50 DIA. X 500 HIGH.
- O.F. TANK AIR PIPES FITTED WITH GAUZE WIRE
- REMAINDER WITH WOOD PLUGS.

Particulars of Gangway Cargo and Coaling Ports:— NONE

Particulars of Scuppers and Sanitary Discharge Pipes:—

- SCUPPERS FROM FREEBOARD DECK DISCHARGE THROUGH SHIP'S SIDES AS PER SKETCH
- SCUPPERS FROM POOP & FOLE DECKS DISCHARGE THROUGH SIDE PLATING ABOVE FREEBOARD DECK.



ALL SANITARY DISCHARGES FROM AMIDSHIP ACCOMMODATION DISCHARGE THROUGH BRIDGE SIDE PLATING ABOVE FREEBOARD DECK AND ARE FITTED WITH BRASS NON-RETURN VALVES.

SANITARY DISCHARGES FROM W.C.'S & WASHPLACES IN POOP SPACE DISCHARGE BELOW THE FREEBOARD DECK AND ARE FITTED WITH BRASS NON-RETURN VALVES.

Particulars of Side Scuttles:—

- IN POOP, BRIDGE & FORECASTLE SIDES ARE OF STRONG CONSTRUCTION AND FITTED WITH DEADLIGHTS.
- NONE FITTED BELOW FREEBOARD DECK.

Vertical distance of Sill of lowest Side Scuttle above top of keel ABOUT 11.684.

Particulars of Guard Rails:—

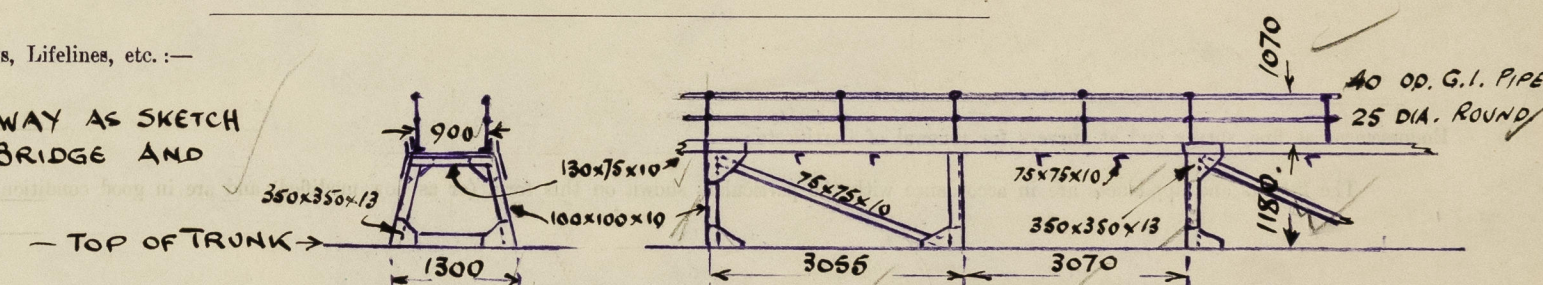
- 40 O.D.
- 25 DIA.
- 25 DIA.



- ON FREEBOARD DECK 1.115 HIGH
- ON POOP & FOLE " 1.070 "
- STANCHIONS SPACED 1500 APART.

Particulars of Gangways, Lifelines, etc.:—

FORE & AFT GANGWAY AS SKETCH BETWEEN FOLE & BRIDGE AND BRIDGE & POOP.



Particulars of Freeing Arrangements.

	Length of Bulwark	Height of Bulwark	Size of Freeing Ports	Number each side	Area each side	Rule area each side
After Well ...	OPEN	RAILS				
Forward Well ...	OPEN	RAILS				

State position of each freeing port ... (After Well:— ✓)
(F. and A. position and height above deck edge) (Forward Well:— ✓)

State whether the freeing ports are fitted with shutters, bars, or rails, and give particulars of such:— ✓

Additional area where sheer is less than standard.

PARTICULARS OF PROTECTION TO OPENINGS, ETC.

HATCHWAYS ON FREEBOARD AND SUPERSTRUCTURE DECKS.											
← FREEBOARD DK → TRUNK TOP →											
		O.T. SIDE CARGO TANKS		O.T. CENTRE CARGO TANKS		Nº 1. CARGO HOLD.		Nº 2 STORE RM.		Nº 3 & 4 STORE ROOMS	
Description of Hatchway ...		1345 x 1000		do -		3425 x 3500		700 x 700		1000 x 900	
Dimensions of Hatchway ...		850		do -		F = 820 A = 1100		460		460	
COAMINGS	Height above Deck ...	10		do -		11		9		9	
	Thickness ...	10		do -		11		9		9	
	Sides ...	VERTICAL ONE		do -		178 x 76 x 10.5		X		X	
	Ends ...	EACH SIDE		do -		1 EACH END		X		X	
HATCH BEAMS	Brackets, Stays ...	90 x 75 x 9		do -		2 " SIDE		X		X	
	Number ...	ONE		do -		ONE		X		X	
	Spacing ...	1712		do -		1712		X		X	
	Scantling and Sketch ...	X		do -		X		X		X	
FORE AND AFTERS	Bearing Surface ...	X		do -		254 x 89 x 4		X		X	
	Number ...	X		do -		75		X		X	
	Spacing ...	X		do -		X		X		X	
	Unsupported Lengths ...	X		do -		X		X		X	
HATCH COVERS	Scantling* and Sketch ...	X		do -		X		X		X	
	Bearing Surface ...	X		do -		X		X		X	
	Material ...	O.T. HINGED STEEL		do -		STEEL PLATE		STEEL PLATE		STEEL PLATE	
	Thickness ...	PLATE COVER 12.5		do -		9.5		9		9	
HATCH COVERS	How fitted ...	2 STIFFENERS		do -		ONE PIECE		ONE PIECE		ONE PIECE	
	Bearing Surface ...	100 x 75 x 10		do -		W.T. JOINT		HINGED		HINGED	
	Spacing of Cleats ...	3 - 1" HINGED		do -		5 HINGED SCREWS		2 - 1"		2 - 1"	
	Number of Tarpaulins ...	SCREWS EACH SIDE & END		do -		EACH SIDE 1" DIA. SPACED 640.		HINGED BOLTS		HINGED BOLTS	
*Are wood fore and afters steel shod at all bearing surfaces? X Are battens and wedges efficient and in good condition? X Are tarpaulins in good condition and in accordance with rule requirements? X Are lashings provided in accordance with rule requirements? X											

Particulars of any special features :—

Endorsement at first survey and at surveys for renewal of Certificate :—

The fittings and appliances are in accordance with the particulars shown on this form (or as now modified) and are in good condition.



© 2020

Lloyd's Register Foundation