

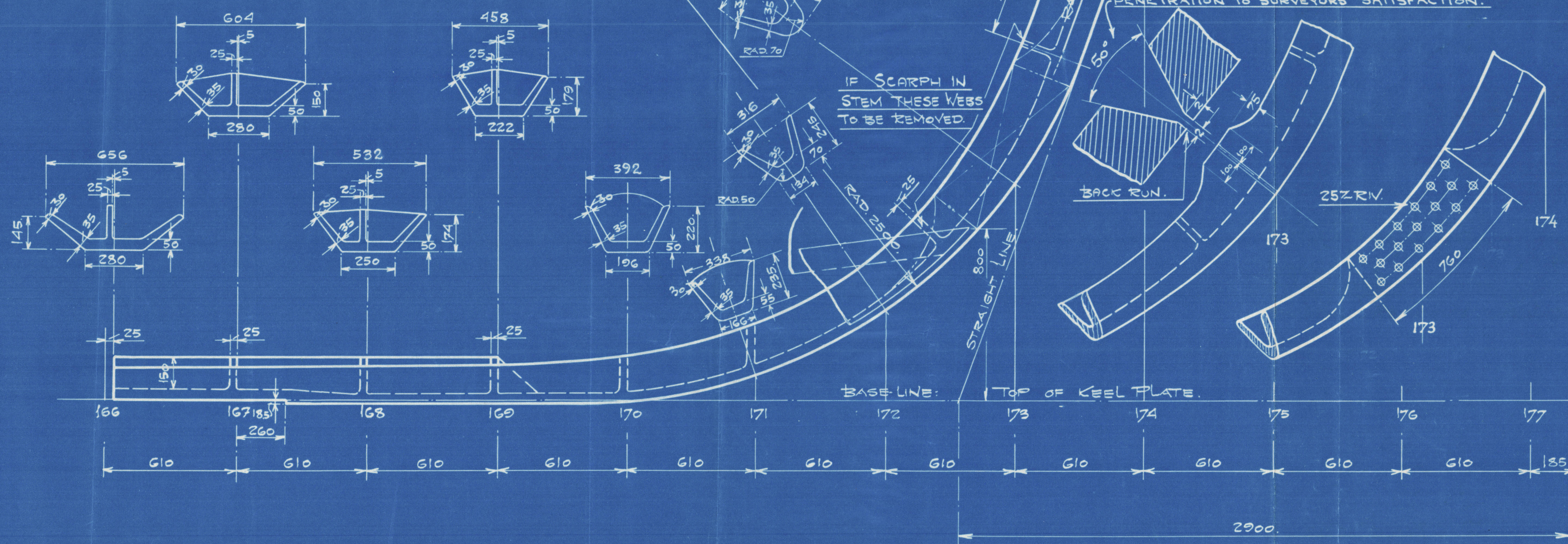
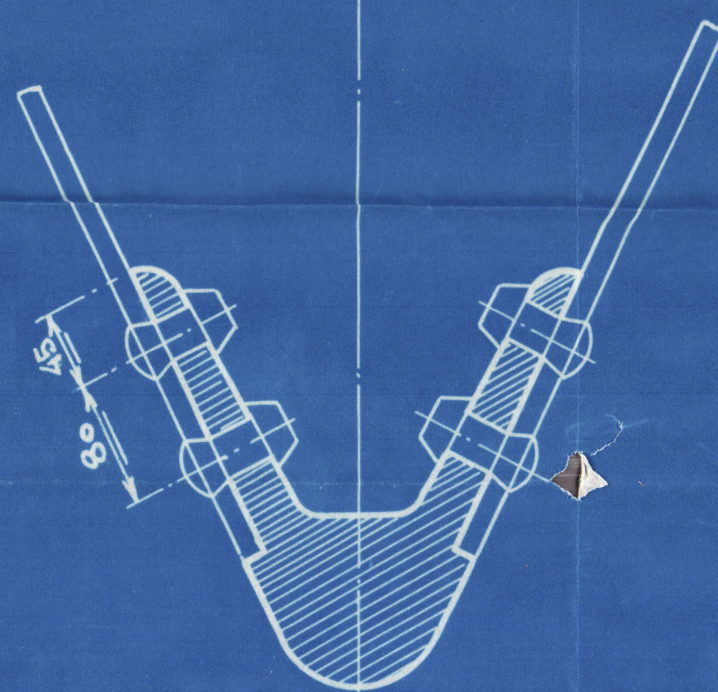
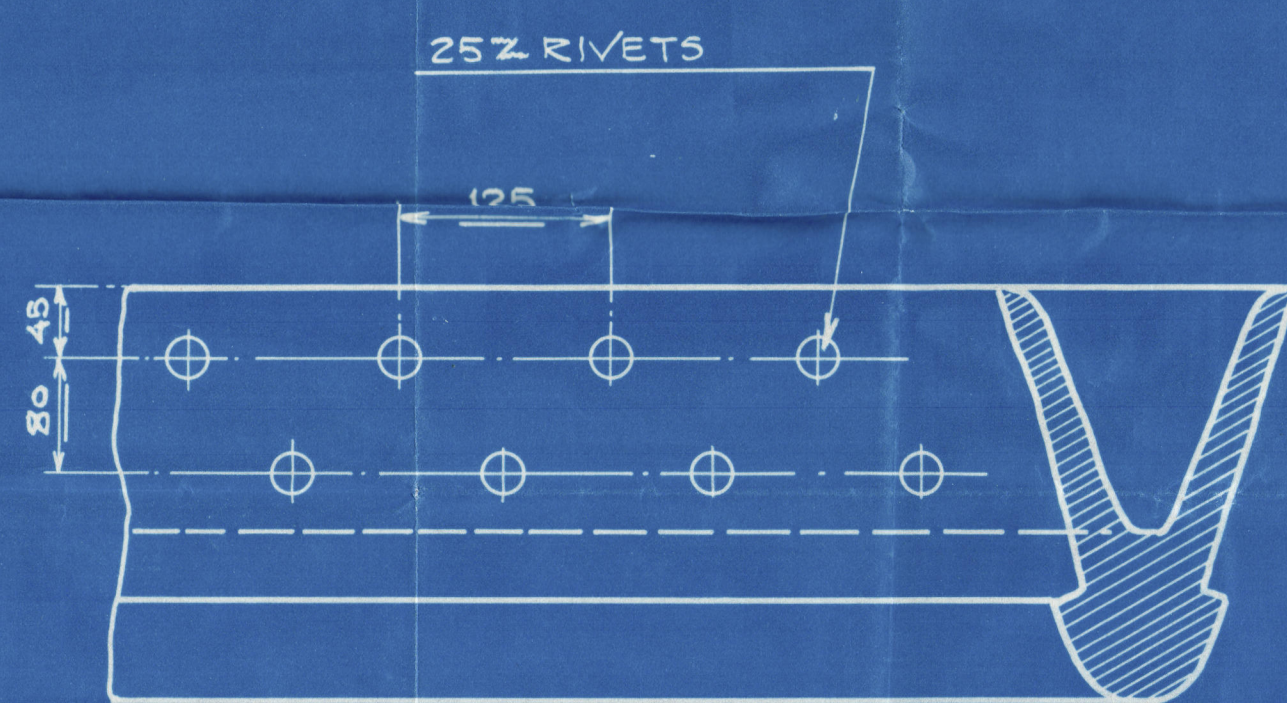
ARSENAL II.

STEM

SCALE: 1:15.

MATERIAL: CAST STEEL.

IF BUTT WELDED THE RULES FOR THE APPLICATION OF ELECTRIC ARC WELDING TO BE COMPLIED WITH.



FORWARD PERPENDICULAR.

THE LENGTH OF THE STEM TO BE DETERMINED AS SHOWN FROM THE POSITION OF SEAM IN SHELL PLATING. = 4100

ARSENAL DO ALFONSO
YARD N° C15

ARSENAL II
K. 7849.
J. K.
MC.
24. 7. 42.
1: 15
STEM.
W. W. W.

CORRECTED IN ACCORDANCE WITH LLOYD'S APPROVED COPY OF THIS PLAN DATED: 1/8-1942.

Lloyd's Register
Foundation

GLASGOW

004718-004726-0171



© 2020

Lloyd's Register
Foundation

"SAMEIRO" ★

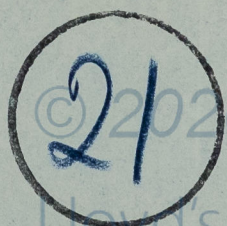


Arsenal do Alfeite

10,000 Yon Yankee

C. 15

Stern



© 2020

Lloyd's Register
Foundation

004718-004726-0171