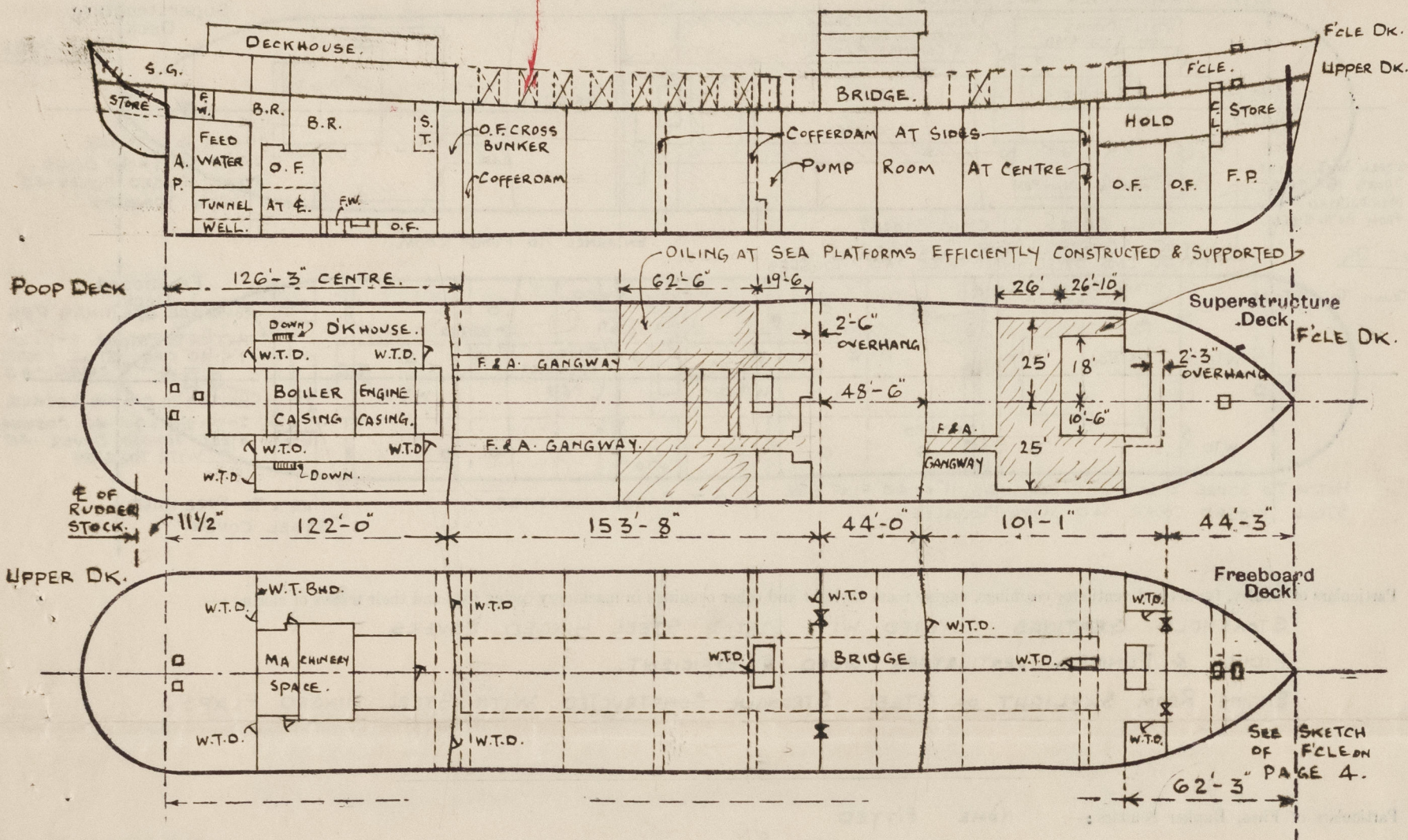


7/ab 17976

Disposition and dimensions of superstructures, trunks, deckhouses and machinery casings to be inserted in the diagrams and tabular statement :—

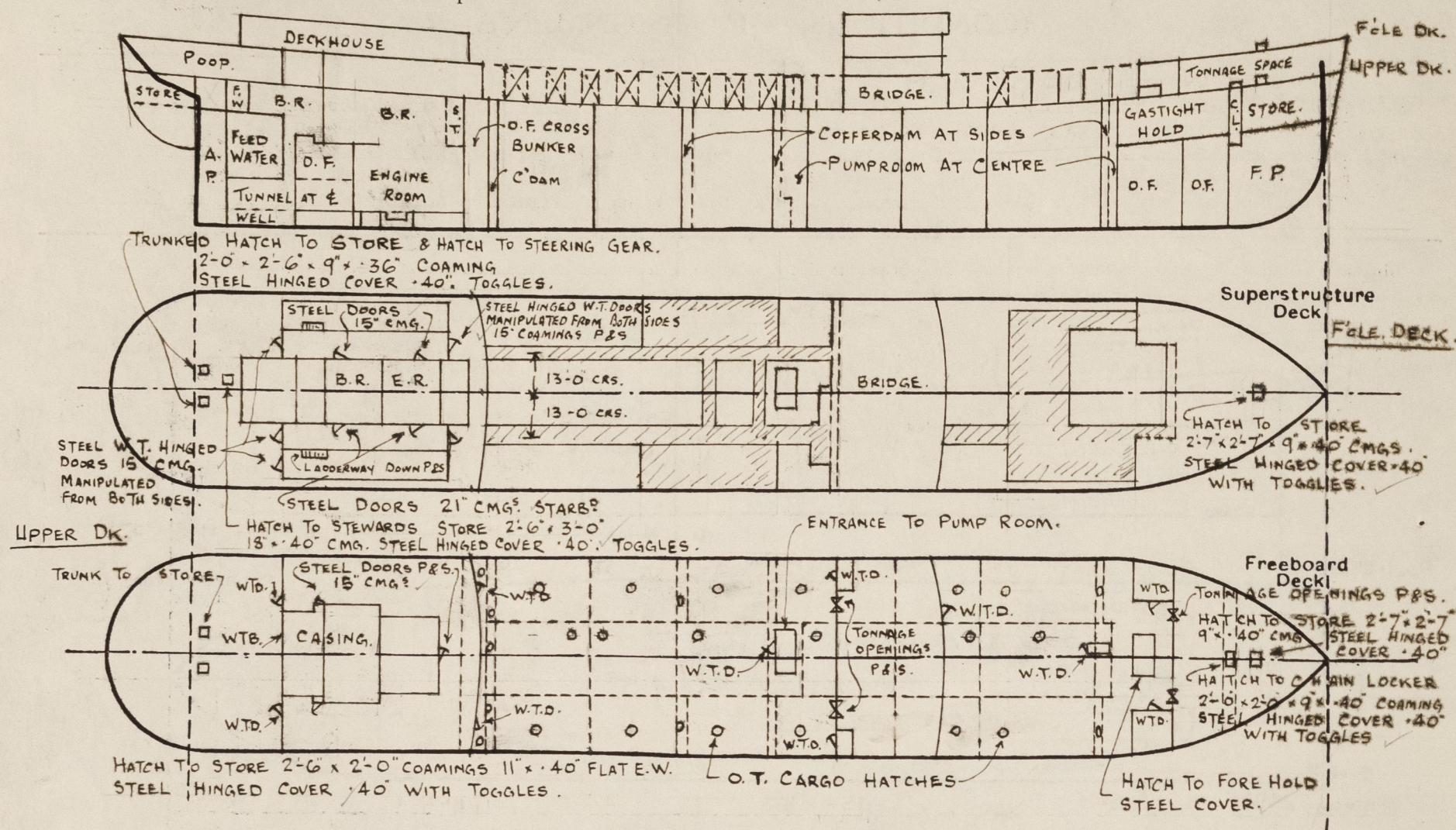


Particulars of Superstructures, Trunks, Casings, Deckhouses.								
	Coaming	Plating	Stiffeners	Spacing	End Attachments of Stiffeners	Size of Openings	Height of Sills	Height of Casings
Poop Bulkhead	44"	44"	10" x 3½" x 40"	30"	LUGS TOP. E.W. BOTT.	2 OFF W.T.D. 5'-0" x 2'-6"	18"	7'-6"
Raised Quarter Deck Bulkhead ...	✓							
Bridge, After Bulkhead	34"	34"	5" x 3" x 36"	36"	BRKT'S TOP. JOINTER BOTT.	2 OFF W.T.D. 5' x 2' 2 OFF T.O. 5'-1" x 3'	18"	7'-6"
Bridge, Forward Bulkhead	50"	50"	10" x 3½" x 44"	36"	BRKT'S TOP. E.W. BOTT.	1 OFF W.T.D. 5'-3" x 2'-9"	15"	7'-6"
Forecastle Bulkhead	30"	30"	5" x 3" x 30" OA.	30"	JOINTER.	2 OFF T.O. 4'-6" x 3'-0½"	18"	7'-6"
Trunk, Aft	✓							
Trunk, Forward	✓							
Exposed Machinery Casings on Free- board or Raised Quarter Decks ...	✓							
Exposed Machinery Casings on Super- structure Decks	✓							
Machinery Casings within Superstruc- tures not fitted with Class I Closing Appliances	✓							
Deckhouses on Flush Deck Ships ...	PUMP	ROOM	ENTRANCES.					

Particulars of Closing Appliances (state if capable of being manipulated from both sides).	
Poop Bulkhead	HINGED STEEL W.T. DOORS P&S, MANIPULATED FROM BOTH SIDES.
Raised Quarter Deck Bulkhead ...	✓
Bridge, After Bulkhead	HINGED STEEL W.T. DOORS P&S, MANIPULATED FROM BOTH SIDES. PORTABLE PLATES WITH HOOK BOLTS P&S, BOLTS 14" APART.
Bridge, Forward Bulkhead	HINGED STEEL W.T. DOOR (PORT) MANIPULATED FROM BOTH SIDES. PORTABLE PLATES WITH HOOK BOLTS P&S, BOLTS 14" APART.
Forecastle Bulkhead	HINGED STEEL W.T. DOORS P&S, MANIPULATED FROM BOTH SIDES.
Exposed Machinery Casings on Free-board or Raised Quarter Decks ...	✓
Exposed Machinery Casings on Super-structure Decks	✓
Machinery Casings within Superstructures not fitted with Class I Closing Appliances	✓
Deckhouses on Flush Deck Ships ...	PUMP ROOM ENTRANCE MIDSHIPS, HINGED STEEL W.T. DOOR, MANIPULATED FROM BOTH SIDES. " " " FORWARD, " " " " " " " " " " " "

PARTICULARS OF PROTECTION TO OPENINGS, ETC.

The following diagrams should be used to indicate the positions of cargo and coaling hatchways, gangway, cargo and coaling ports, ventilators, companionways, etc., which would affect the seaworthiness of the ship:—



Particulars of fiddley, funnel and ventilator coamings, engine room skylight and other openings in machinery casing tops and their means of closing :—

STAKEHOLD GRATINGS COVERED WITH STRONG STEEL HINGED COVERS.

FIDLEY & FUNNEL VENTILATORS GOOD & EFFICIENT.

ENGINE ROOM SKYLIGHT OF STEEL STRONGLY CONSTRUCTED WITH STEEL HINGED FLAPS.

Particulars of Flush Bunker Scuttles:— NONE FITTED

Particulars of Companionways:—

FORWARD PUMP ROOM ENTRANCE:— 4'-6" x 2'-9" x 6'-6" HIGH.
PLATING .30", 1 STIFF ON EACH SIDE 3" x 3/8" FLAT E.W. ✓
W.T. DOOR ON AFTER END 4'-6" x 2'-3" x 18" x .30" COAMING, MANIPULATED FROM BOTH SIDES. ✓
MIDSHIP PUMP ROOM ENTRANCE:— 7'-6" x 13'-0" x 7'-6" HIGH, COAMING 7/2" x .40 FLAT E.W., PLATING .30". ✓
STIFFS: FORE END 4" x 3/2" x .30" TOE E.W. SPACED 2'-0". AFT END & SIDES 3" x .30" FLAT E.W. ✓
TOP .30" PLATING, 4' x 3' x .32 BEAMS TOE E.W., W.T. DOOR AFT END 4'-6" x 2'-3" WITH
24" x .30 COAMING, MANIPULATED FROM BOTH SIDES. ✓

Particulars of Ventilators in exposed positions on freeboard and superstructure decks :—

Particulars of Forecastle Deck Led To				Calculators in exposed positions on freeboard and superstructure decks —			
		FORE HOLD	3' 0"	6' DIA.	36" x 25"	COAMING, W.I.	X.
		TWEEN DK STORES	1 "	10 "	36" x 32"		X. ✓
		FORE STORE BELOW UPPER DECK	1 "	8 "	36" x 32"		X.
		TWEEN DK OVER COMPRESSOR	1 "	15 "	36" x 30"		X.
					36" x 36"		X.
UPPER		MIDSHIP PUMP ROOM	2 "	24 "	36" x 40"		X
		FORE	1 "	12 "	36" x 32"		X. ✓
		FORE HOLD	1 "	12 "	36" x 32"		X. ✓
POOP		STEERING GEAR	2 "	16 "	39 1/2" x 38"	MUSHROOM.	
		REFRIG MACHINE	1 "	10 "	30" x 25"	W.I.	X.
		POOP PASSAGEWAYS	2 "	16 "	36" x 32"		X.
		REFRIG MACHINE.	2 "	16 "	30" x 35"		X.
			1 "	9 "	8'-9" x 38"		X.
					30" x 32"	MUSHROOM.	

STAYED AT BOAT DK.

ALL VENTILATORS CONSTRUCTED IN ACCORDANCE WITH THE RULES & COAMINGS :-	
CLOSED WITH GASTIGHT PACKED COVERING PLATES.	MARKED ✓
" " WOOD PLUGS & CANVAS COVERS.	X
" " GASTIGHT HINGED VALVES.	X

Particulars of Air Pipes in exposed positions on freeboard, raised quarter, or superstructure decks :—

Particulars of Air Pipes in exposed positions on foreboard, raised quarter, or superstructure decks —					
AIR PIPE ON POOP DECK	LEO TO RUBBER TRUNK (P).	3' DIA.	GOOSENECK.	18"	HIGH WOOD PLUGS
"	PEAK AFT P.S.	4'	"	18"	"
"	FEED WATER TANK P.S.	3'	"	18"	"
"	O.F. UNDER B.R. FLAT P.S.	4'	BELLMOUTH	18"	DOUBLE GAUZE & SCREW-UP COVER.
"	F.W. ad. TANK 30-35 S.	3'	GOOSENECK	18"	WOOD PLUGS
"	C'DAM 30-1 & 35-40 S.	S. 2 1/2	"	18"	OPEN END
BELOW UPPER DK.	O.F. ad. TANK 40-49 P.S.	4'	BELLMOUTH	18"	DOUBLE GAUZE & SCREW-UP COVER.
ON POOP	O.F. BUNKERS 49-53 P.S.	4'	G-O	"	"
UPPER	C'DAM 53-54.	P.S. 4'	G-O	"	"
"	147-8	P.S. 4'	G-O	"	"
"	F.C.L.E.	O.F. 149-162	P.S. 4'	18"	"
"	"	O.F. 162-170	P.S. 3'	18"	"
"	"	FORE PEAK	P. 4'	GOOSENECK.	18"
"	"	"	"	"	WOOD PLUGS.

SOUNDING PIPE. DECK PIECES 10" HIGH WITH FLANGE TO TAKE EJECTORS, BRASS SCREW PLUGS CHAINED ON PIPE.
 " " TO O.F. d. b. TANKS & FEED WATER TANK. 4 OFF 2" DIA. 4-0" ABOVE TANKS, FITTED WITH SELF CLOSING VALVES.
 " " TO COFFERDAMS IN d. b. TANKS. 2 OFF 1 1/2" 4-0" " NON-DETACHABLE SCREW PLUGS.

Particulars of Gangway Cargo and Coaling Ports :—

NONE FITTED

Wave Sovereign

Particulars of Scuppers and Sanitary Discharge Pipes :—

SCUPPERS FROM STEERING GEAR COMPT 2 1/2" DIA. DISCHARGING OVERBOARD 1'-0" BELOW UPPER DECK.
P & S, & 4 AFT. FITTED WITH CHAINED SCREW PLUG.
SANITARY DISCHARGES FROM POOP ACCOM^{TD} 4' & 4 1/2" DIA. DISCH^{RG} OVERBRD. 5'-0" BELOW UPPER DECK (P & S) } FITTED WITH M.R.S.D.
" " " " 4", 3", 2 1/2" & 2" DIA. " 2'-0" " " " } VALVES ON SHIPS
" " " " " " " " " " " " " } SIDE & EFFICIENT
" " " " " " " " " " " " " } TRAP ON INNER END.

SCUPPERS FROM BOILER ROOM W.T. DECK 2" DIA SCUPPER TO BILGES WITH SELF CLOSING VALVES. P&S.
" " " " " " 2" " " " " IN TUNNEL ESCAPE NO VALVE. P&S.

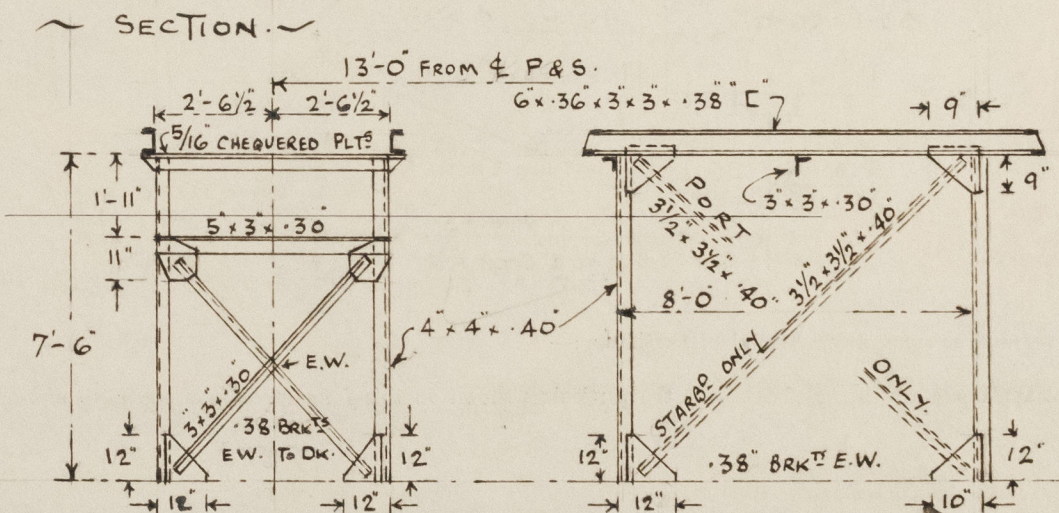
SCUPPER TO BILGES IN FORWARD ALLEYWAY TO POOP. FITTED WITH CHAINED SCREWED PLUG.

Particulars of Side Scuttles:—

SIDE SCUTTLES ON POOP, BRIDGE & FORECASTLE OF
SUBSTANTIAL CONSTRUCTION. FITTED WITH HINGED DEADLIGHTS.

Vertical distance of Sill of lowest Side Scuttle above top of keel 40'-3"
 GUARD RAILS ON POOP BRIDGE & F'CLE. 3 RDS, 3'-6" HIGH. } WITH STANCHIONS
 " " FREEBOARD DECK 3 " 3'-6" " " } SPACED ABOUT 5'-0"
 PART STEEL BULWARKS AT ENDS OF ERECTIONS 3'-6" HIGH EFFICIENTLY CONSTRUCTED & SUPPORTED.

Particulars of Guard Rails :—



Particulars of Gangways, Lifelines, etc. :—

Particulars of Freeing Arrangements.						
	Length of Bulwark	Height of Bulwark	Size of Freeing Ports	Number each side	Area each side	Rule area each side
After Well ^{FORM^d OF POOP} AFT OF BRIDGE	10'-0" 13'-0"	3'-6" 3'-6"	NONE "	✓	✓	✓
Forward Well ^{FORM^d OF BRIDGE} AFT OF FLE.	10'-0" 10'-0"	3'-6" 3'-6"	" "	✓	✓	✓

State position of each freeing port	{ After Well :— <i>NONE.</i> { Forward Well :— <i>NONE.</i>
(F. and A. position and height above deck edge)		

State whether the freeing ports are fitted with shutters, bars, or rails, and give particulars of such:—

Additional area where sheer is less than standard.

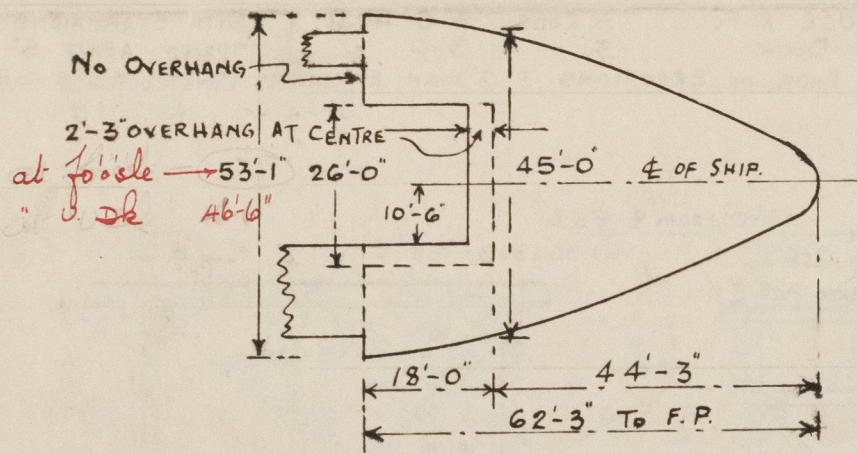
PARTICULARS OF PROTECTION TO OPENINGS, ETC.

HATCHWAYS ON FREEBOARD AND SUPERSTRUCTURE DECKS.									
Description of Hatchway		W.T. HATCHES ON UPPER DECK.							
Dimensions of Hatchway									
COAMINGS	Height above Deck								
	Thickness								
	Stiffeners								
	Brackets, Stays								
HATCH BEAMS	Number								
	Spacing								
	Scantling and Sketch								
	Bearing Surface								
FORE AND AFTERS	Number								
	Spacing								
	Unsupported Lengths								
	Scantling* and Sketch								
HATCH COVERS	Material								
	Thickness								
	How fitted								
	Bearing Surface								
Spacing of Cleats									
Number of Tarpaulins									

*Are wood fore and afters steel shod at all bearing surfaces?
 Are battens and wedges efficient and in good condition?
 Are tarpaulins in good condition and in accordance with rule requirements?
 Are lashings provided in accordance with rule requirements?

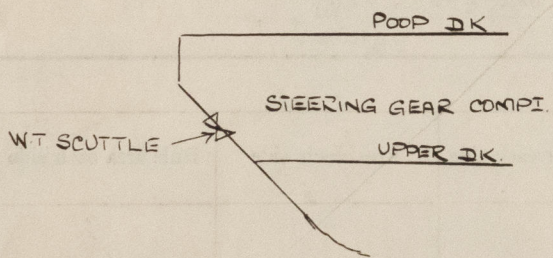
Particulars of any special features:—

FORECASTLE DECK.



Endorsement at first survey and at surveys for renewal of Certificate:—

The fittings and appliances are in accordance with the particulars shown on this form (or as now modified) and are in good condition.



21" W.T. SCUTTLE IN STERN ABOUT 42'-0" ABOVE BASE.
 STEEL COVER .38" SECURED BY SCREW DOWN TOGGLES, MANIPULATED FROM INSIDE VESSEL