

SHIPS Nos. 191-2. - Nos 214-5.

For Nos 214-5 see also separate Plans of Profile & Decks as built - E.L.

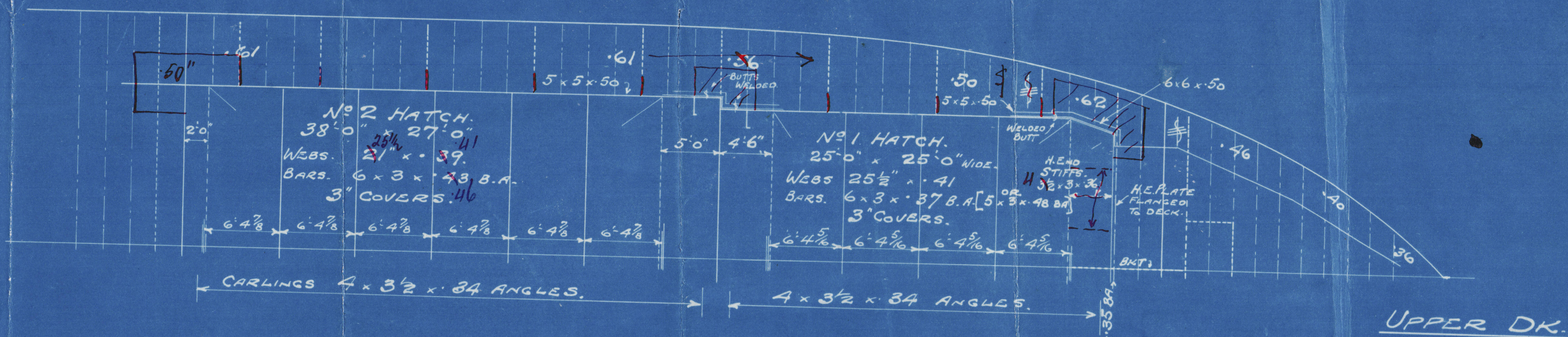
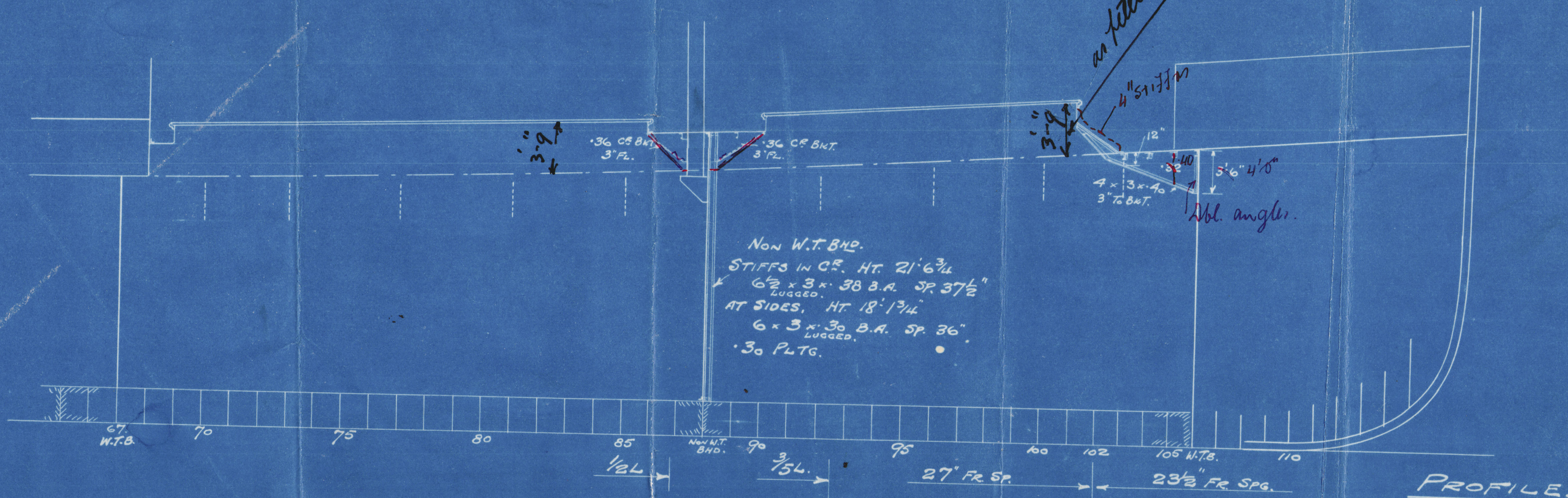
MODIFICATIONS TO PROFILE & DKS.

as built Nos 191-2

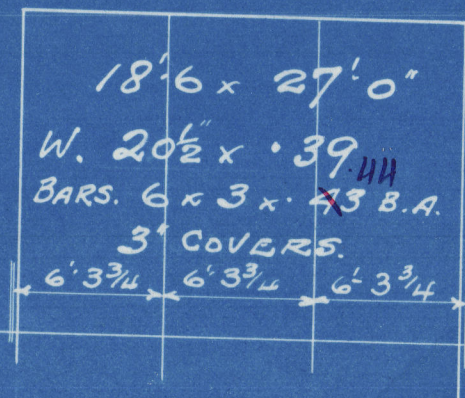
$\frac{1}{8}'' = 1 \text{ FOOT}$

ALL BULB ANGLES ARE N.B.S.

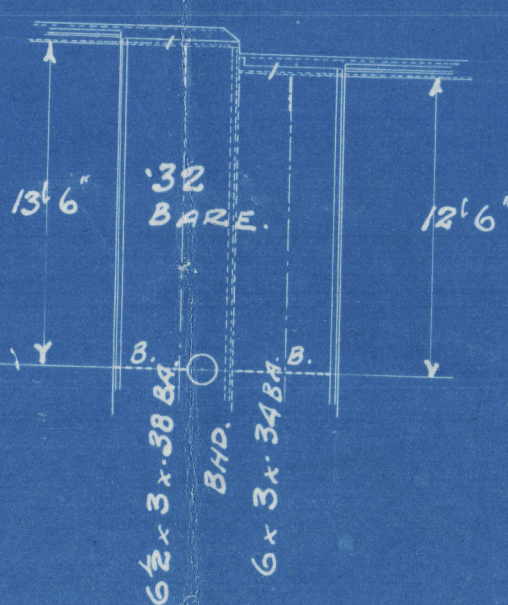
OTHER SCANTLINGS AS PREVIOUSLY SUBMITTED.



No 4. HATCH.
ALTERNATIVE WEBS.



PLATFORM
BETWEEN HATCHES.



APPROVED
LLOYD'S REGISTER OF SHIPPING
Date 24.5.35

APPROVED for 214-5
LLOYD'S REGISTER OF SHIPPING
Date 19/3/37

004703-004709-0204

BURNTISLAND S.B. CO

N^o 191 - 2 214-5

MODIFICATION TO
PROFILE T DECK

as fitted.

(4)

N/N WHITFLEET

ss "Corbicae"



Lth. Rpt. No. 18947.

s/s "Corburn"

Lth. Rpt. No. 19000

s/s^d "Corfield"^b

Lth. Rpt. No. 19369

ss "Corferry"

Lth. Rpt. No. 19441

For N^o 214 & 5 see
also plan of Profile &
Decks as built.

Lloyd's Register
Foundation

004703 - 004709 - 0204