

DVT. COPY ISSUED 20 MAY 1953
OWNERS' C.11 ISSUED 20 MAY 1953



NEWCASTLE-ON-TYNE, No 109820

Index No. 48731
(For London Office only.)

Lloyd's Register of Shipping.

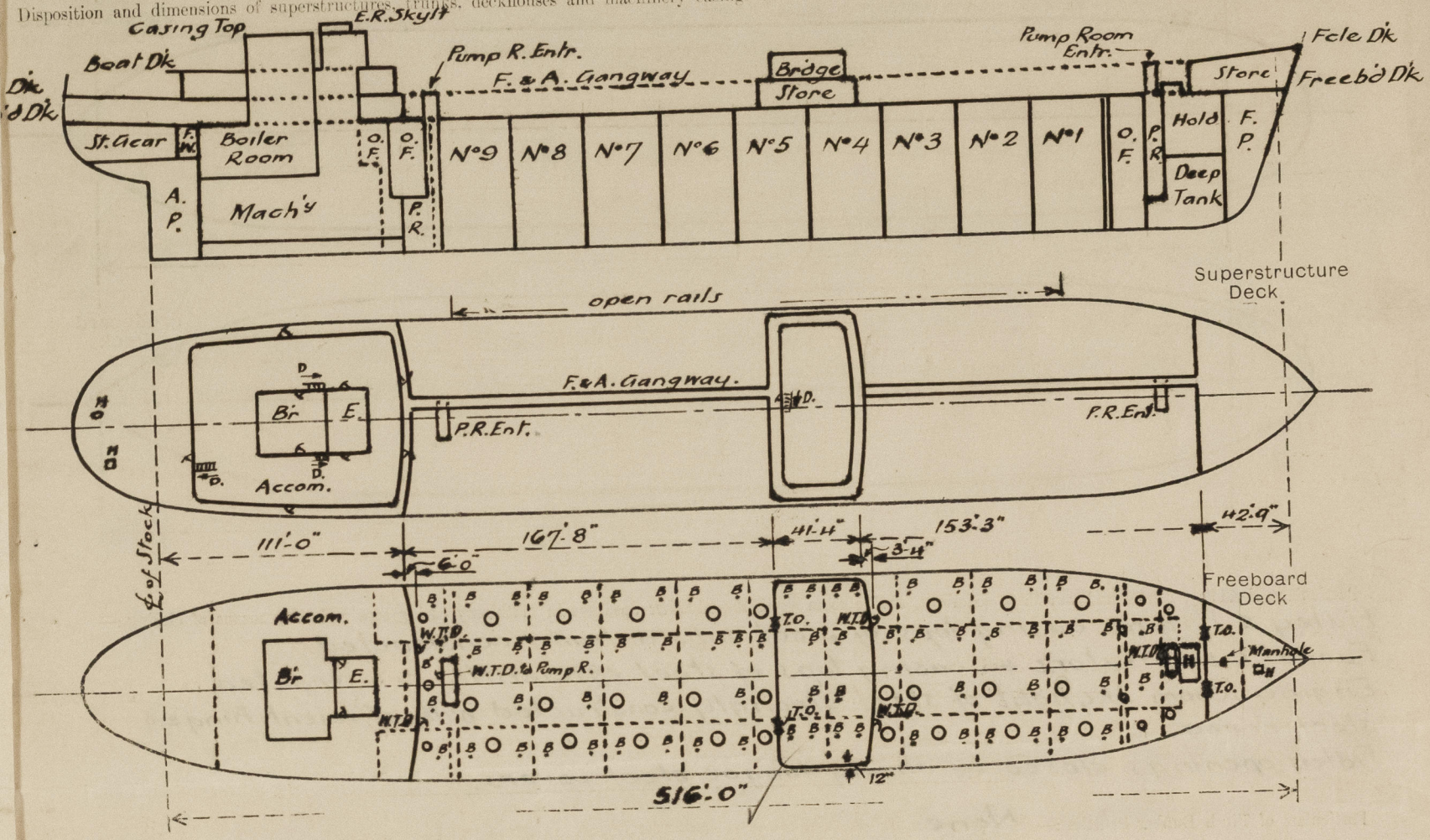
SURVEYS FOR FREEBOARD.

(CONDITIONS OF ASSIGNMENT.)

6 - OCT 1952

Ship's Name "CALTEX LIVERPOOL" Port of Survey Newcastle upon Tyne
Official Number 184737 Surveyor's Signature W. Robinson
Nationality and Port of Registry British, London. Date of Survey During Construction.

Disposition and dimensions of superstructures, trunks, deckhouses and machinery casings to be inserted in the diagrams and tabular statement :-



Particulars of Superstructures, Trunks, Casings, Deckhouses.

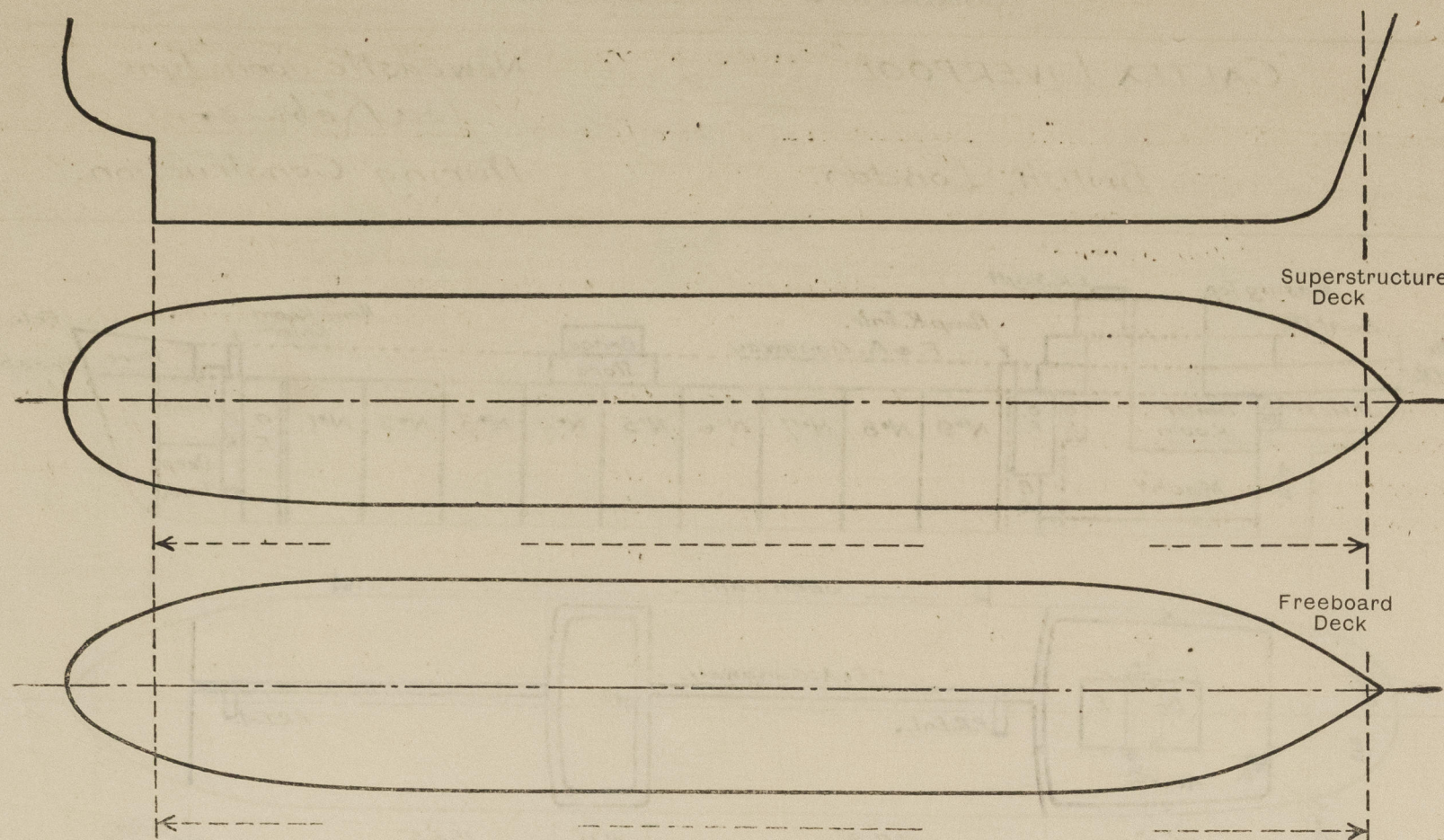
	Coaming	Plating	Stiffeners	Spacing	End Attachments of Stiffeners	Size of Openings	Height of Sills	Height of Casings
Poop Bulkhead	✓	.44	11x42 B.P.	29" & 31 1/2"	Bk'ts & EW top, EW bottom	2a 5'-0" x 27"	18"	8'-0"
Raised Quarter Deck Bulkhead	none				Brack'ts top	2a	✓ 19"	8'-0"
Bridge, After Bulkhead	✓	.30	3 1/2 x 2 1/2 x 30 toe w.	30"	EW bottom	4'-1" x 37"	18"	8'-0"
Bridge, Forward Bulkhead	✓	.44	10x40 BP	30"	Brack'ts top	2a	✓ 19"	8'-0"
Forecastle Bulkhead	✓	.30	4x3x32 toe w.	30" & 34"	EW bottom	5'-0" x 30"	✓ 19"	9'-0"
Pump Room	✓	.40	4x3 1/2 x 40 toe w.	31"	EW top & bottom	2a 5'-0" x 37"	✓ 24"	8'-0"
Trunk, Forward						1a 4'-9" x 27"		
Machinery Casings on Freeboard	✓	.20	3x30 flat	30"	none	(p.s.) 5'-3" x 24"	✓ 15"	8'-0"
Exposed Machinery Casings on Superstructure Decks	✓	.30	4x36 flat	30"	Bk'ts a top	Br Cas. (p.s.) 5'-3" x 24"	✓ 9"	10'-0"
Machinery Casings within Superstructures not fitted with Class I Closing Appliances	✓	.20	3x30 flat	30"	none	2(p.s.) 5'-9" x 24"	✓ 9"	8'-0"
Deckhouses on Flush Deck Ships								

Particulars of Closing Appliances (state if capable of being manipulated from both sides).

Poop Bulkhead	✓ Hinged steel W.T. door (p.s.) operated from both sides.
Raised Quarter Deck Bulkhead	PORTABLE STEEL PLATES SECURED BY HOOK BOLTS.
Bridge, After Bulkhead	Tonnage opening (p.s.) closed by 3 stormboards in welded channels.
Bridge, Forward Bulkhead	Hinged steel W.T. door (p.s.) operated from both sides.
Forecastle Bulkhead	PORTABLE STEEL PLATES SECURED BY HOOK BOLTS.
Machinery Casings on Freeboard	Tonnage opening (p.s.) closed by 3 stormboards in welded channels.
Exposed Machinery Casings on Superstructure Decks	Hinged steel door (p.s.) operated from both sides.
Machinery Casings within Superstructures not fitted with Class I Closing Appliances	Hinged steel door operated from both sides, fore end Br Room, aft end Eng. Room.
Pump Rooms, forward & aft.	2 hinged steel doors (p.s.) operated from both sides.
Deckhouses on Flush Deck Ships	Hinged steel W.T. door operated from both sides in each.

PARTICULARS OF PROTECTION TO OPENINGS, ETC.

The following diagrams should be used to indicate the positions of cargo and coaling hatchways, gangway, cargo and coaling ports, ventilators, companionways, etc., which would affect the seaworthiness of the ship:—



Particulars of fiddle, funnel and ventilator coamings, engine room skylight and other openings in machinery casing tops and their means of closing:—

- ✓ Fiddle & Engine casing tops of steel substantially constructed.
- ✓ Funnel & ventilators on casing tops of steel efficiently constructed.
- ✓ Engine Room Skylight of steel strongly constructed with efficient hinged steel covers.
- ✓ Fiddle openings closed by strong hinged steel covers.

Particulars of Flush Bunker Scuttles:— None

Companionways:— Steel deckhouse on Bridge Deck strongly constructed enclosing ladderway to Bridge space with opening 4' 9" x 24" & 18" sill closed by strong hinged wood door operated from both sides.

Steel house on Poop Deck strongly constructed enclosing ladderways to Poop tween decks. 2 openings in front & 1 (pass) 4' 9" x 27" & 18" sill closed by strong hinged wood doors operated from both sides & opening in after end 4' 9" x 30" & 18" sill closed by hinged steel door in halves.

Particulars of Ventilators in exposed positions on freeboard and superstructure decks:—
 Poop Dk:— 1-13" diar x 30" x 36"
 Fcile Dk:— 2-18" diar x 36" x 40" W.T. SCREW DOWN M.V.
 2-8" " x 36" x 30" " " " "
 2-6" " GN x 36" " " " "
 Upper Dk:— 2-24" diar x 12' 0" x 40" efficiently stayed
 2-18" " x 12' 0" x 40" -do- -do-
 2-24" " x 12' 0" x 40" -do- -do-
 Bridge Dk:— 4-8" " x 30" x 30"
 2-6" " GN x 30"
 All vents supplied with canvas covers.
 All cow/vents supplied with wood plugs.

Particulars of Air Pipes in exposed positions on freeboard, raised quarter, or superstructure decks:—

Fcile Dk:— 2-3 1/2" diar GN x 36" high
 2-7" " Auto Top x 36"
 Upper Dk:— 2-7" " " x 36"
 2-3 1/2" " GN x 36"
 1-7" " Auto Top x 8' 0" Efficiently
 2-7" " " x 10' 6" stayed.
 Poop Dk:— All air pipes 30" high G.N.

All air pipes except for Auto Tops supplied with wood plugs & canvas covers.

Particulars of Gangway Cargo and Coaling Ports:— None.

Calter Liverpool.

Particulars of Scuppers and Sanitary Discharge Pipes:— 10-6" 2" oval scuppers (pass.) cut thro' gunwale bar on exposed freeboard deck.

Fcile Deck - drained by 2 1/2" diar scupper (pass.) led thro' Fcile Front to Upper Dk thro open ended pipe. by 1 1/2" diar scupper (pass.) led overboard thro' open ended pipe above freeboard deck (windlass space).
 Fcile Space - 2-1" diar screwed drain plugs (pass.) thro' Fcile Front secured by keep chains.
 Bridge Space - 1" diar screwed drain plug (pass.) thro' Bridge End secured by keep chains.
 Poop Deck - exposed scuppers (pass.) led overboard thro' open ended pipes above freeboard deck.
 Poop Space - scuppers (pass.) led overboard below freeboard deck & 18" above L.W.L. & fitted with G.M. storm valves at outer ends.

Sanitary discharges from Poop deckhouses & Poop tween decks led overboard below freeboard deck & 18" above L.W.L. & fitted with G.M. storm valves at outer ends.
 Scuppers & Sanitary discharges from inside Bridge deckhouses led overboard below freeboard deck & 18" above L.W.L. G.M. storm valves fitted immediately above freeboard deck & with discharge passing thro' oil cargo tanks of heavy quality tube.

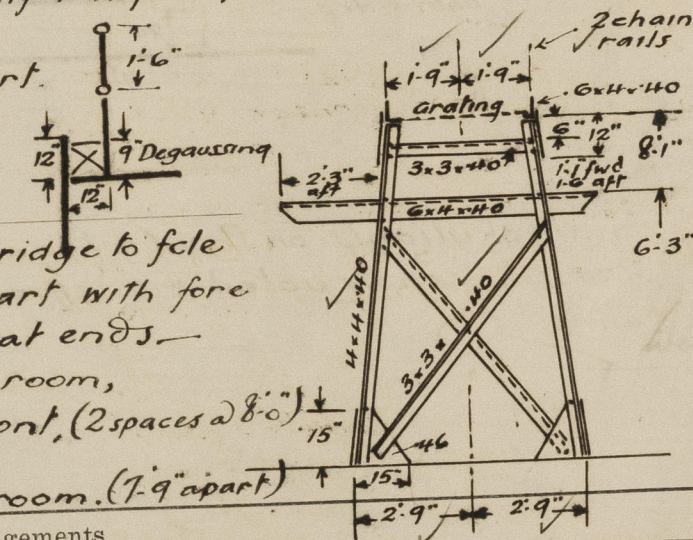
Particulars of Side Scuttles:—

12" diar sidelights in Fcile & Bridge spaces & 12" x 10" diar lights in Poop spaces efficiently constructed with substantial deadlights permanently attached.

Vertical distance of Sill of lowest Side Scuttle above top of keel:— All above freeboard deck.

Particulars of Guard Rails:— Open rails fitted for more than half length of exposed freeboard deck. 2 chains 2' 0" x 3' 6" high with stanchions 4' 3" apart.
 Poop's Fcile - 3 rails, 3' 6" high, stanchions 3' 9" x 4' 3" apart.

Particulars of Gangways, Ladders, etc.:— Gangway poop to bridge & bridge to fcle (2 chain rails) with vertical supports as sketch 9' 0" apart with fore & aft bracing (3 1/2" x 3 1/2" x 40") every 2nd support except at ends.
 5 supports without bracing (fca) aft of forward pump room, forward of bridge front, (2 spaces @ 8' 0")
 4 -do- aft of bridge end & forward of after pump room. (7' 9" apart)
 5 -do-
 4 -do-



Particulars of Freeing Arrangements.

	Length of Bulwark	Height of Bulwark	Size of Freeing Ports	Number each side	Area each side	Rule area each side
After Well ...			NONE.			
Forward Well ...						

State position of each freeing port ... { After Well:—
 (F. and A. position and height above deck edge) { Forward Well:—

State whether the freeing ports are fitted with shutters, bars, or rails, and give particulars of such:—

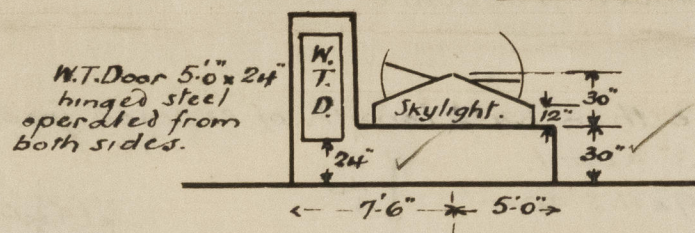
Additional area where sheer is less than standard.

PARTICULARS OF PROTECTION TO OPENINGS, ETC.

HATCHWAYS ON FREEBOARD AND SUPERSTRUCTURE DECKS.										
			Within Supers. On Poop Super.							
Description of Hatchway	Fore Hold	Oil Cargo 2' off	Oil Fuel 7' off	Forward Cofferdm 2' off	Butterwith Opens 6' 9" off	Fore Store	Chain Locker	Cold Store
Dimensions of Hatchway	9'0" x 16'0"	14'1" diar	2'3" diar	2'0" dia.	12' dia.	3'3" x 3'9"	21" x 15"	3'6" x 4'2"
COAMINGS	Height above Deck	...	30" ✓	30" ✓	30" ✓	24" ✓	✓	9" ✓	✓	21" ✓
	Thickness	Sides	.44	.75	.50	.40		.40	✓	.40
	Stiffeners	Ends	9 x 50 B.P.	✓	✓	✓		✓	✓	✓
	Brackets, Stays	{ Sides Ends	2	✓	✓	✓		✓	✓	✓
HATCH BEAMS	Number	...	6 x 3 1/2 x 36							
	Spacing	...	6'0"							
	Seantling and Sketch	...	welded to cover with small access hatch							
	Bearing Surface	...	hatch							
FORE AND AFTERS	Number	...	2-9 x 33	2-3 1/2 x 75	As Cargo Hatches	As Cargo Hatches				
	Spacing	...	6'0"	3'0"						
	Unsupported Lengths	...	coaming .50	flat bar stiff on cover						
	Seantling* and Sketch	...	hinged steel W.T. cover toggles 21" apart.							
HATCH COVERS	Material	...	steel	steel	steel	steel	brass	steel	steel	steel
	Thickness50	.50	.40	.50	.75	.50	.50	.30
	How fitted	...	hinged W.T.	hinged	hinged	hinged	bolted	hinged	hinged	hinged
	Bearing Surface	...	✓	O.T.	O.T.	W.T.	W.T.	W.T.	W.T.	W.T.
Spacing of Cleats	toggles 21"	2 toggles	2 toggles	2 toggles	4 1/2" apart	21"	bolts 3 1/2" apart	20"
Number of Tarpaulins	✓	✓	✓	✓	7/8 bolts	✓	✓	✓
*Are wood fore and afters steel shod at all bearing surfaces? ✓ Are battens and wedges efficient and in good condition? ✓ Are tarpaulins in good condition and in accordance with rule requirements? ✓ Are lashings provided in accordance with rule requirements? ✓										

Particulars of any special features:—

Sketch of Forward Pump Room Entrance.



Small skylights on ^{Boat Deck} Poop (4 to galleys) & on Pump Room Entrances of steel strongly constructed with efficient hinged steel covers (Water Tight over Pump rooms.)