

Lloyd's Register of Shipping.

SURVEYS FOR FREEBOARD.

(CONDITIONS OF ASSIGNMENT.)

8 MAR 1950

Ship's Name "SOYA CHRISTINA"

Port of Survey SUNDERLAND.

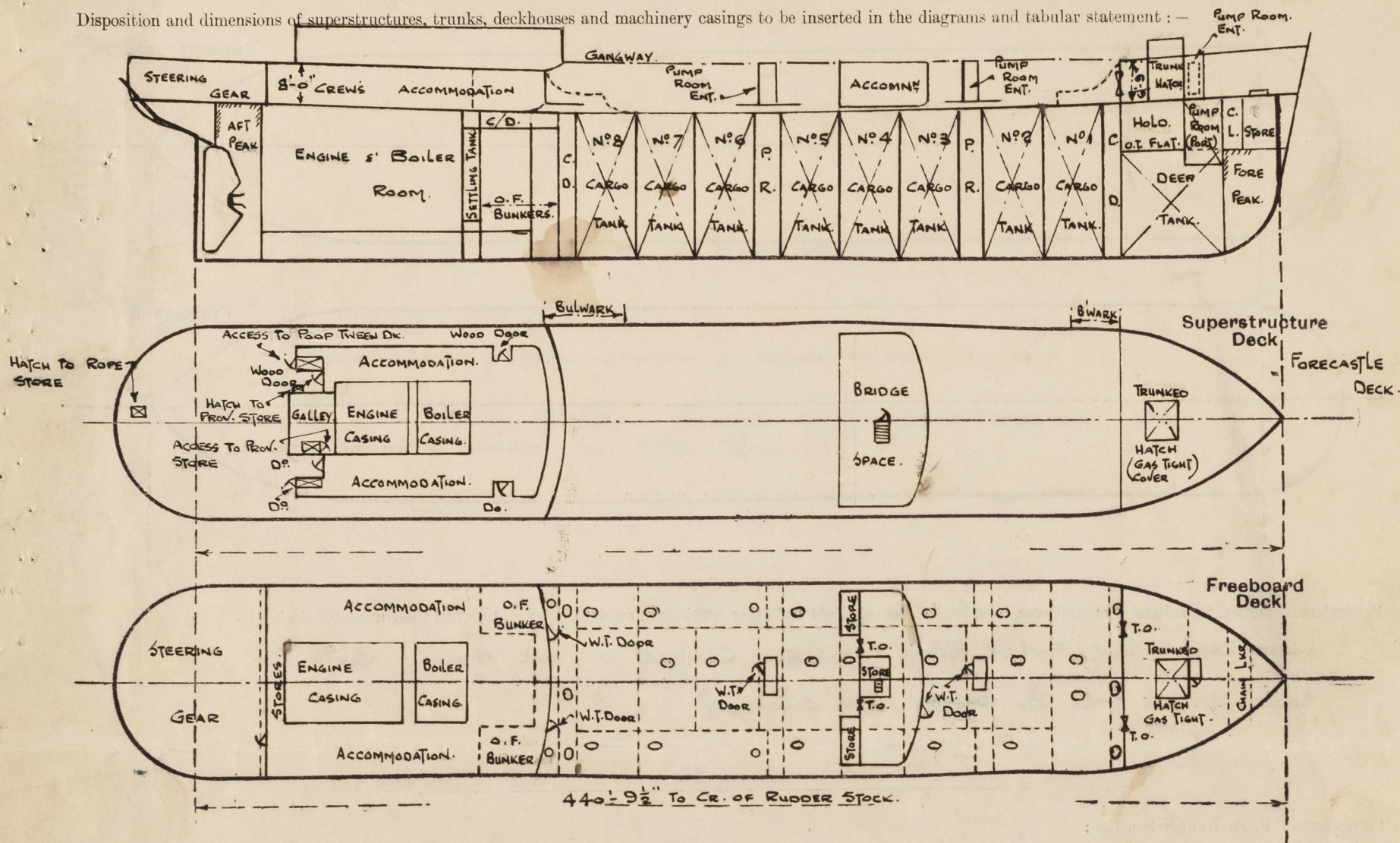
Official Number 9142.

Surveyor's Signature James K Young.

Nationality and Port of Registry STOCKHOLM: SWEDISH.

Date of Survey

Disposition and dimensions of superstructures, trunks, deckhouses and machinery casings to be inserted in the diagrams and tabular statement: -



Particulars of Superstructures, Trunks, Casings, Deckhouses.

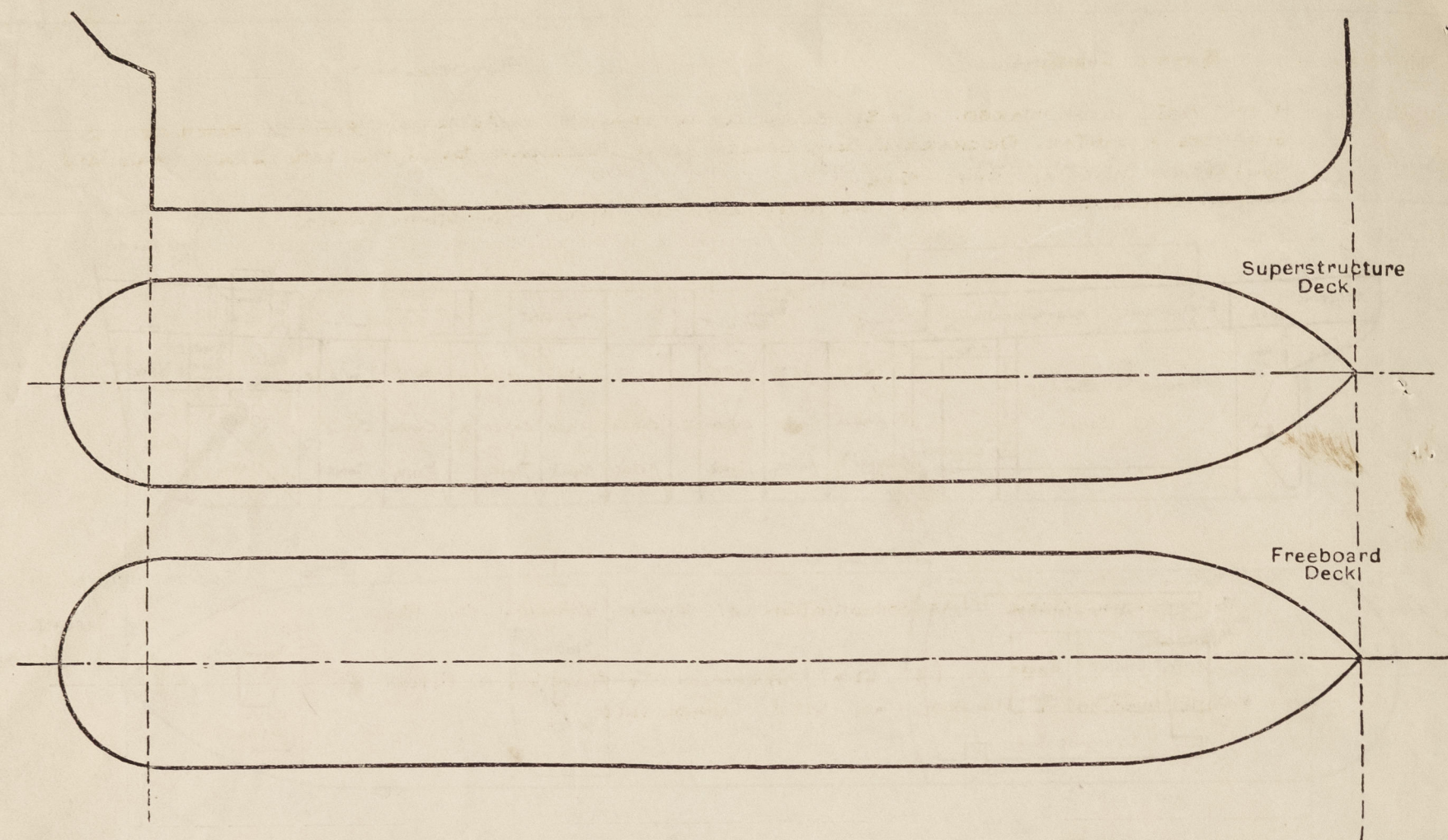
	Coaming	Plating	Stiffeners	Spacing	End Attachments of Stiffeners	Size of Openings	Height of Sills	Height of Casings
Poop Bulkhead ...	✓	44"	10" x 3 1/2" x .43 B.A.	30"	Bkts. AT TOP LUGGED AT BOTTOM	2 @ 57" x 28" 1 @ 42" x 30"	18"	8'-0"
Raised Quarter Deck Bulkhead ...	✓	✓	✓	✓	✓	✓	✓	✓
Bridge, After Bulkhead ...	30"	30"	4" x 3" x .40"	30"	Bkts. AT TOP	2 @ 66" x 37"	24"	8'-0"
Bridge, Forward Bulkhead ...	44"	44"	10" x 3 1/2" x .43 B.A.	30"	Bkts. TOP & BOTTOM	1 @ 60" x 28"	18"	8'-0"
Forecastle Bulkhead ...	✓	31" - 30"	4" x 3" x .30" O.A. 6" x 3" x .30" B.A.	32" - 30"	✓	2 @ 3'-11" x 3'-1"	24"	6'-9"
Trunk, Aft ...	✓							
Trunk, Forward ...	✓							
Exposed Machinery Casings on Freeboard or Raised Quarter Decks ...	✓							
Exposed Machinery Casings on Superstructure Decks ...	✓							
Machinery Casings within Superstructures not fitted with Class I Closing Appliances ...	✓							
Deckhouses on Flush Deck Ships ...	✓							

Particulars of Closing Appliances (state if capable of being manipulated from both sides).

Poop Bulkhead ...	3 - HINGED STEEL W.T. DOORS; 2 OPENING FROM BOTH SIDES; 1 OPERATED FROM OUTSIDE ONLY (DOOR TO PIPE TRUNK)
Raised Quarter Deck Bulkhead ...	✓
Bridge, After Bulkhead ...	2 STEEL PORTABLE PLATES FITTED WITH HOOKED BOLTS. ✓
Bridge, Forward Bulkhead ...	1 - HINGED STEEL W.T. DOOR: OPERATED FROM BOTH SIDES. ✓
Forecastle Bulkhead ...	2 STEEL PORTABLE PLATES FITTED WITH HOOKED BOLTS. ✓
Exposed Machinery Casings on Freeboard or Raised Quarter Decks ...	✓
Exposed Machinery Casings on Superstructure Decks ...	✓
Machinery Casings within Superstructures not fitted with Class I Closing Appliances ...	✓
Deckhouses on Flush Deck Ships ...	✓

PARTICULARS OF PROTECTION TO OPENINGS, ETC.

The following diagrams should be used to indicate the positions of cargo and coaling hatchways, gangway, cargo and coaling ports, ventilators, companionways, etc., which would affect the seaworthiness of the ship:—



Particulars of fiddley, funnel and ventilator coamings, engine room skylight and other openings in machinery casing tops and their means of closing:—

ENGINE ROOM SKYLIGHT, FIDLEY, FUNNEL & VENTILATOR COAMINGS OF STEEL, STRONGLY CONSTRUCTED. ✓
FIDLEY OPENINGS FITTED WITH HINGED STEEL COVERS. ✓

Particulars of Flush Bunker Scuttles:—

NONE. ✓

Particulars of Companionways:—

MIDSHIP & FORWARD PUMP ROOM ENTRANCES: RATING. 38" STIFFERS. 4" x 3" x 38" O.A. WELDED TOE ON. SPACED 32 1/2" APART, BXTS. TOP & BOT. ✓
DECK OPENING: 6'-10" x 3'-6"; STEEL SKYLIGHTS 6'-0" x 5'-0"; W.T. DOORS (OPERATED FROM BOTH SIDES) 4'-6" x 2'-0" ✓
COAMING 24" HIGH: ✓ ENTRANCE TO FORWARD PUMP ROOM IN FORE, 5'-0" x 2'-0" GAS TIGHT DOOR 18" COAMING OPERATED FROM BOTH SIDES. ✓
ENT. TO POOP DK TWEEN DK GREEN SPACE 2-5'-0" x 2'-2" WOOD DOORS 18" COAMING. OPERATED FROM BOTH SIDES. ✓

Particulars of Ventilators in exposed positions on freeboard and superstructure decks:—

1 @ 13" DIA.	COWL VENT.	COAMING.	36" x 34" To FOCLE TWEEN DK WITH 9" TUBE TO BOSUN'S STORE.	FORECASTLE DECK
2 @ 18"	"	"	36" x 34" To FORWARD PUMP ROOM.	
2 @ 12"	"	"	36" x 34" To CARGO TWEEN DECK	
1 @ 9"	"	"	36" x 32" To FOCLE TWEEN DECK	
2 @ 18"	COWL VENTS	"	108" x 36" To No. 2 PUMP ROOM. (STAYED) ✓	UPPER DECK
2 @ 18"	DERECK POST VENTS.	"	29'-0" x 30" (DOUBLED FOR 9'-6" AT BOTTOM BY 30") (STAYED) ✓	AN PUMP ROOM ENT. TOP
1 @ 20"	COWL VENTS	"	36" x 40" To FORWARD PUMP ROOM ✓	
1 @ 20"	"	"	36" x 40" To AFT PUMP ROOM ✓	
2 @ 9"	"	"	30" x 32" To STEERING GEAR COMPT. ✓	
2 @ 9"	"	"	30" x 32" To REFRIG. MACH. ROOM. ✓	
2 @ 9"	"	"	30" x 32" To WASHROOMS ✓	
1 @ 8"	"	"	30" x 30" To LAUNDRY. ✓	
1 @ 6"	GOOSENECKS	"	18" To OPENING TO DRYING ROOM ✓	
2 @ 5"	"	"	18" To OPENING TO W.C. ✓	

ALL VENTS FITTED WITH WOOD PLUGS & CANVAS COVERS. ✓

Particulars of Air Pipes in exposed positions on freeboard, raised quarter, or superstructure decks:—

1 - 6" DIA.	AIR PIPE	18" To MOUTH	To FORE PEAK W.B. TANK.	ON FOCLE DK.
2 - 6"	"	18" ✓	" OIL FUEL DEEP TANK.	
2 - 5"	"	36" ✓	" FORMO. COFFERDAM.	
2 - 5"	"	36" ✓	" AFTER "	ON MAIN DK
2 - 3"	"	36" ✓	" OIL FUEL BUNKER	
2 - 4"	"	36" ✓	" " D.B. TANK.	
2 - 2 1/2"	"	18" ✓	" " BETTLING TANKS	
2 - 2"	"	18" ✓	" D.B. COFFERDAM.	ON POOP DK.
2 - 3"	"	18" ✓	" " FEED TANK	
2 - 3"	"	18" ✓	" AFT PEAK W.B. TANK	
1 - 3"	"	18" ✓	" RUDDER TRUNK	

ALL AIR PIPES FITTED WITH WOOD PLUGS, GAUZE & OR CANVAS COVERS ✓

Particulars of Gangway Cargo and Coaling Ports:—

NONE.

Particulars of Scuppers and Sanitary Discharge Pipes:—

11 OFF PORT 11 OFF STARBD. 6" x 3 1/2" SLOTS CUT IN STRINGER ANGLE TO DRAIN EXPOSED FREEBOARD DK. ✓
SCUPPERS & SANITARY DISCHARGES FROM SPACES ABOVE FREEBOARD DK. FITTED WITH BRASS AUTOMATIC
NON-RETURN VALVES AT SHIPS SIDE. ✓
SANITARY DISCHARGES FROM SPACES ON FREEBOARD DK. FITTED WITH STORM VALVES. ✓

Particulars of Side Scuttles:—

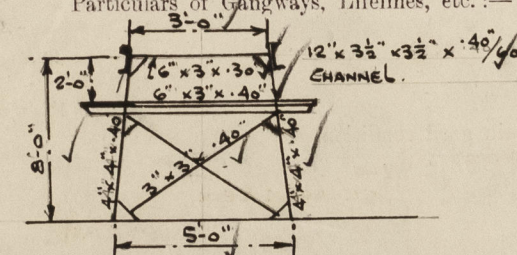
TO STEERING GEAR; ACCOMMODATION & STORE SPACES. IN POOP BRIDGE:—
12" & 14" DIA. STRONGLY CONSTRUCTED & FITTED WITH SUBSTANTIAL HINGED CAST STEEL DEADLIGHTS. ✓

Vertical distance of Sill of lowest Side Scuttle above top of keel 38'-0 1/2" (FORE END OF POOP DECK) 38'-2" (MIDSHIP HOUSE)
NO SIDELIGHTS FITTED BELOW FREEBOARD DECK. ✓

Particulars of Guard Rails:—

STRONGLY CONSTRUCTED STEEL BULWARKS. EFFICIENTLY STAYED, FITTED ON FREEBOARD DK. FOR ABOUT 26'-0" ABOARD FORECASTLE END & 18'-0" FORWARD OF POOP FRONT. ELSEWHERE ON FREEBOARD DK STRONG STEEL STANCHIONS 3'-6" IN HEIGHT ABOVE DK. SPACED ABOUT 5'-0" APART WITH 3 RAILS. AT BRIDGE DK. SIDES, EFFICIENT STEEL BULWARKS 3'-6" HIGH & ELSEWHERE. ✓

Particulars of Gangways, Lifelines, etc.:—



FORE & AFT GANGWAY FROM FOCLE TO BRIDGE & BRIDGE TO POOP. 8'-0" IN HEIGHT. SUPPORTS SPACED APPROX 6'-0" TO 7'-0" APART. FORE & AFT BRACING: 3 OFF FORWARD & 5 OFF AFT. ✓ FINE PLATFORM 2 1/2" THICK, WITH STRONG STEEL STANCHIONS 3'-2" IN HEIGHT SPACED ABOUT 4'-6" APART WITH 3 RAILS. ✓

Particulars of Freeing Arrangements. CLEAR OF OPEN RAILS						
	Length of Bulwark	Height of Bulwark	Size of Freeing Ports	Number each side	Area each side	Rule area each side
ABFT. FOCLE...	25'-10 1/2"	3'-6"	7'-0" x 9"	1	5 1/4 sq Ft.	✓
FORWD. OF POOP.	17'-11"	3'-6"	3'-6" x 9"	1	2 1/2 sq Ft.	✓

State position of each freeing port ...

(F. and A. position and height above deck edge)

HEIGHT ABOVE DK EDGE 9"

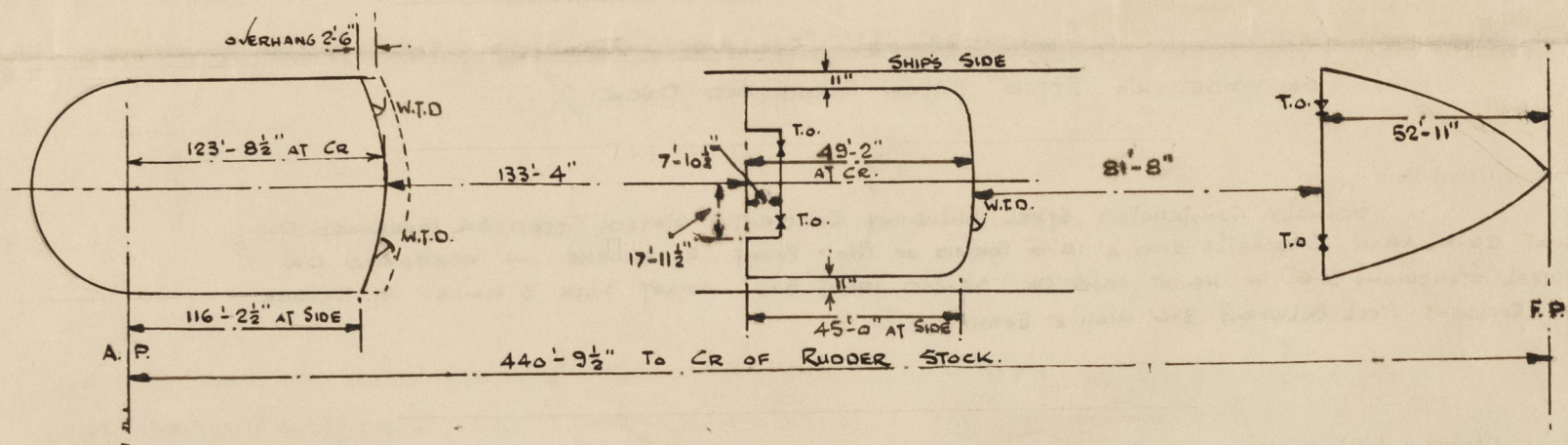
State whether the freeing ports are fitted with shutters, bars, or rails, and give particulars of such:— NONE.

Additional area where sheer is less than standard. ✓

PARTICULARS OF PROTECTION TO OPENINGS, ETC.

HATCHWAYS ON FREEBOARD AND SUPERSTRUCTURE DECKS.											
Description of Hatchway		O.T. HATCHES TO CARGO TANKS (CENTRE)	O.T. HATCHES TO CARGO TANKS (WINGS)	OIL FUEL BUNKERS	O.T. HATCHES TO CARGO TANKS (WINGS)	ACCESS TO FORE HOLD	ACCESS TO C/DAMS.	HATCH ON TOP OF COVER TO FORE HOLD.	ACCESS TO FIDDLE TWEEN DK.	ACCESS TO STEERING GEAR	ACCESS TO PROVISION STORE.
Dimensions of Hatchway		9 OFF 4'-1" x 2'-3"	10 OFF 4'-1" x 2'-7"	2 OFF 2'-1" DIA.	2 OFF 2'-7" DIA.	1 OFF. 9'-1" x 10'-5"	6 OFF 18" x 12"	1 OFF. 24" x 17"	1 OFF 3'-9" x 2'-6"	1 OFF. 2'-0" x 2'-0"	1 OFF. 2'-6" x 2'-7"
COAMINGS	Height above Deck	3 1/2"	3 1/2"	3 1/2"	3 1/2"	3 1/2"	6"	6"	9" B.A.	18"	18"
	Thickness	40"	40"	40"	40"	50"	52"	38"	40"	44"	44"
	Stiffeners	✓	✓	✓	✓	✓	✓	✓	✓	✓	✓
	Brackets, Stays	✓	✓	✓	✓	✓	✓	✓	✓	✓	✓
HATCH BEAMS	Number										
	Spacing										
FORE AND AFTERS	Number										
	Spacing										
	Unsupported Lengths										
	Scantling* and Sketch										
	Bearing Surface										
HATCH COVERS	Material	STEEL	STEEL	STEEL	STEEL	STEEL	STEEL	STEEL	STEEL	STEEL	STEEL
	Thickness	60"	60"	50"	50"	50"	52"	✓	✓	✓	✓
	How fitted	HINGED	HINGED	HINGED	HINGED	TOGGLED	BOLTED	TOGGLED	TOGGLED	TOGGLED	TOGGLED
	Bearing Surface										
Spacing of Cleats		14 TOGGLES	14 TOGGLES	8 TOGGLES	8 TOGGLES	28 TOGGLES	16 BOLTS.	4 TOGGLES.	TOGGLES	TOGGLES	TOGGLES
Number of Tarpaulins		✓	✓	✓	✓	✓					

Particulars of any special features :—



Endorsement at first survey and at surveys for renewal of Certificate :—

The fittings and appliances are in accordance with the particulars shown on this form (or as now modified) and are in good condition.

