

86 MAY 1942

Nº 1161.

# STERNFRAME & BOSS ARMS.

SCALES:  $\frac{1}{2}$ " &  $1\frac{1}{2}$ " = 1 FOOT.

MATERIALS: STERNPOST CASTING - CAST STEEL.

HEEL PIECE - CAST STEEL.

BOSS EYE - CAST STEEL.

ALL TO LLOYD'S LATEST TESTS AND REQUIREMENTS.

PARTICULARS OF SHAFTING:

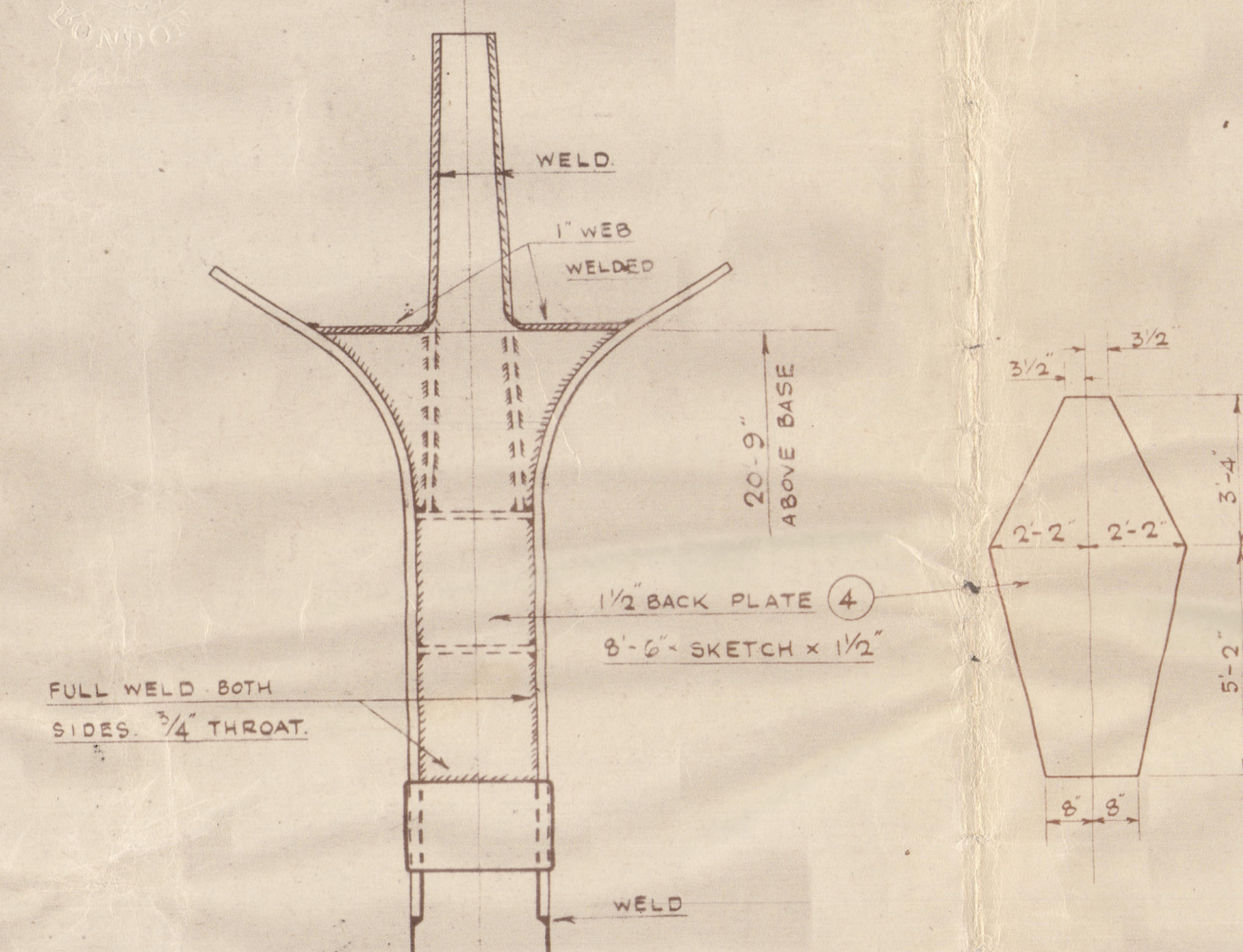
HEIGHT TO CR LINE OF SHAFT AT 3'-0" AFT OF FR. 87	5'-8 $\frac{3}{4}$ "
HAIR BOTH	9'-1 $\frac{1}{2}$ "
HEIGHT	9'-6"
HAIR BOTH	12'-0"
RAKE PER FOOT DOWN FROM PROPELLER	0.424"
INBOARD	15.915'

BOSS ARMS TO BE WORKED IN CONJUNCTION WITH AFTER SECTIONS.

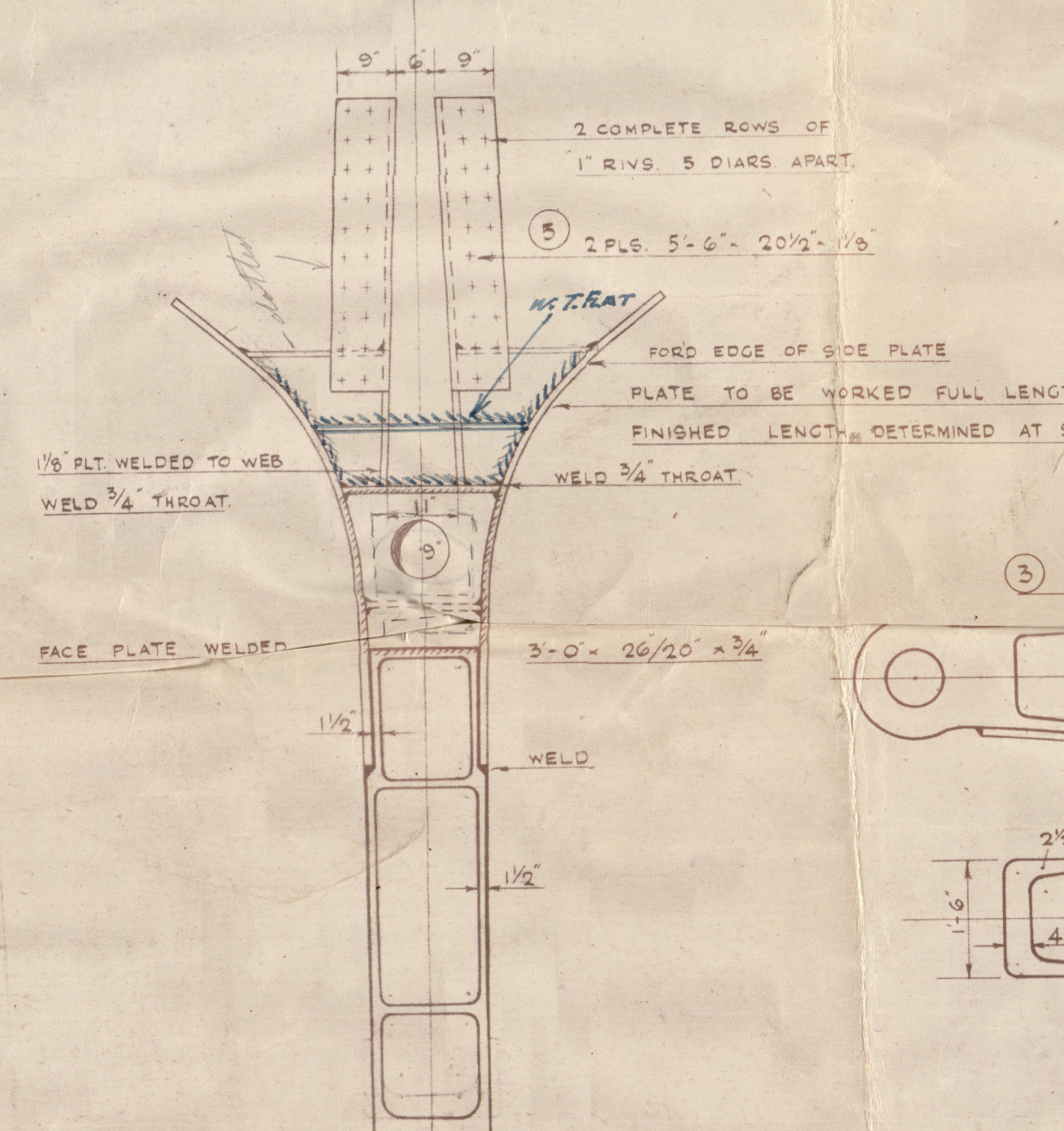
STERNFRAME CODE Nº 105.

BOSS ARMS CODE Nº 107.

SEE ALSO PLAN OF STERNFRAME CASTINGS & FORGINGS.

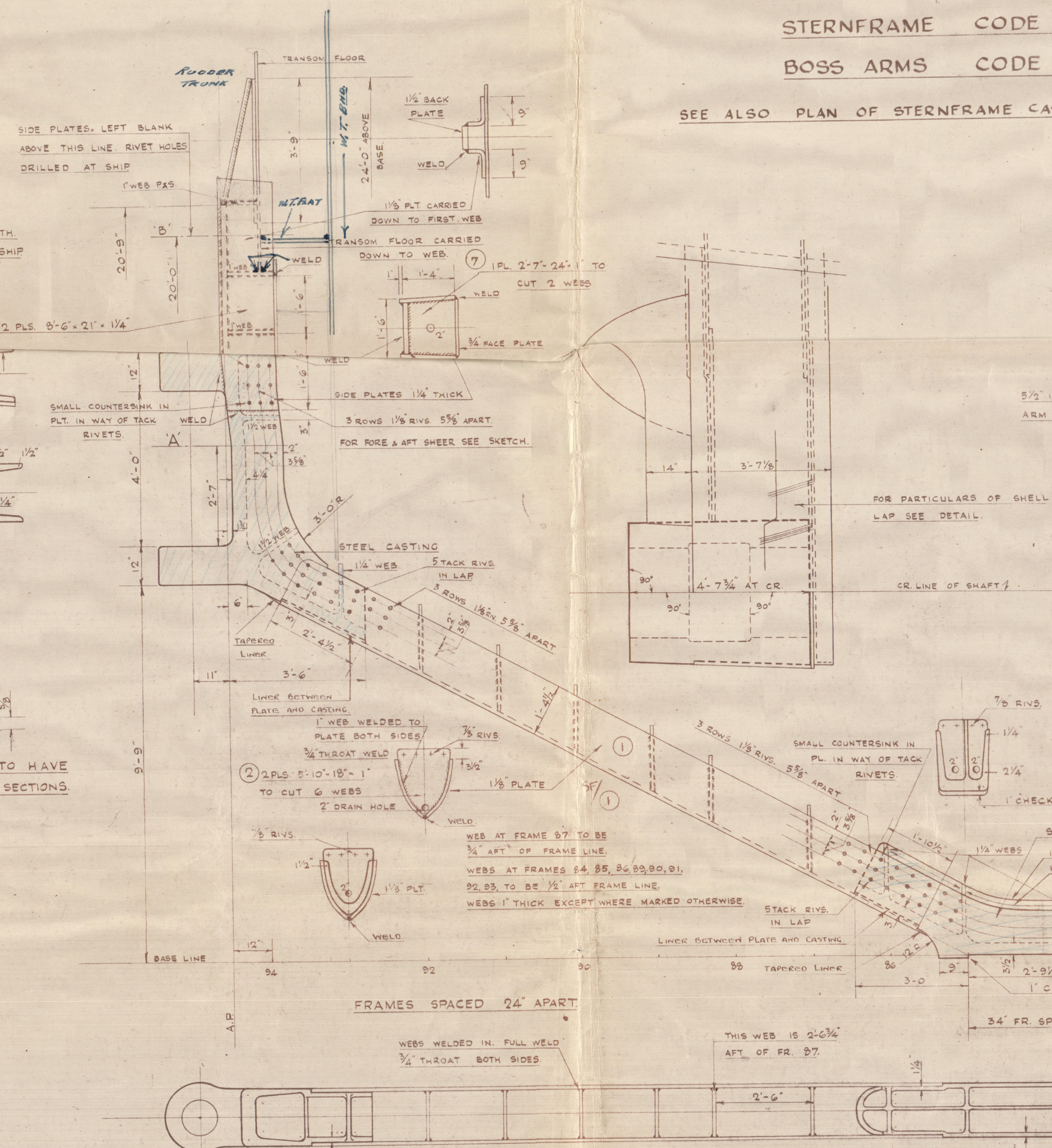


AFTER SIDE OF STERNFRAME  
LOOKING FORWARD

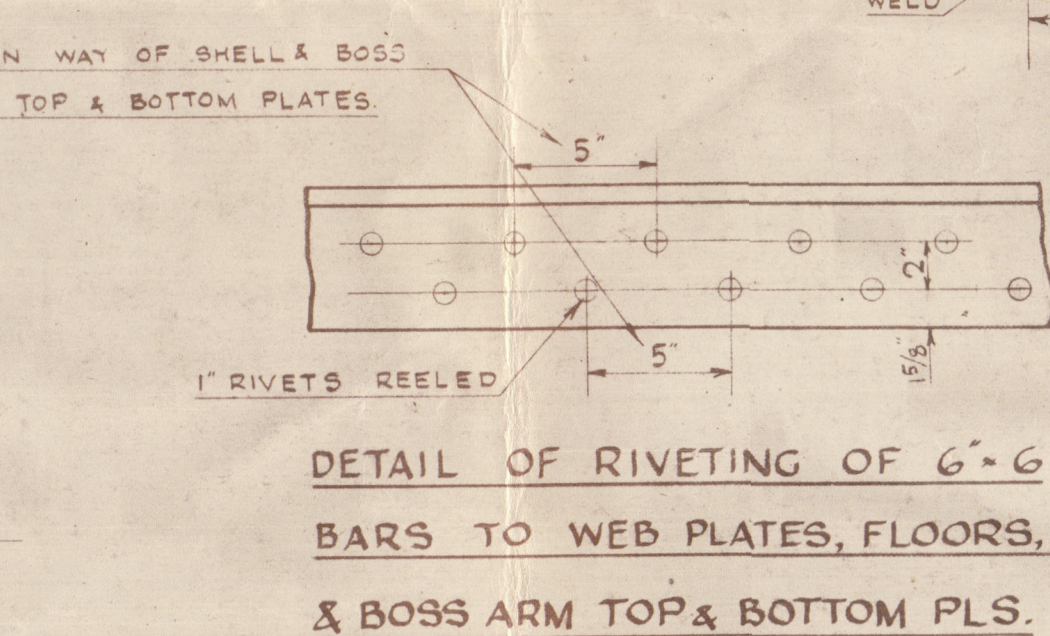


FORWARD SIDE OF STERNFRAME  
LOOKING AFT

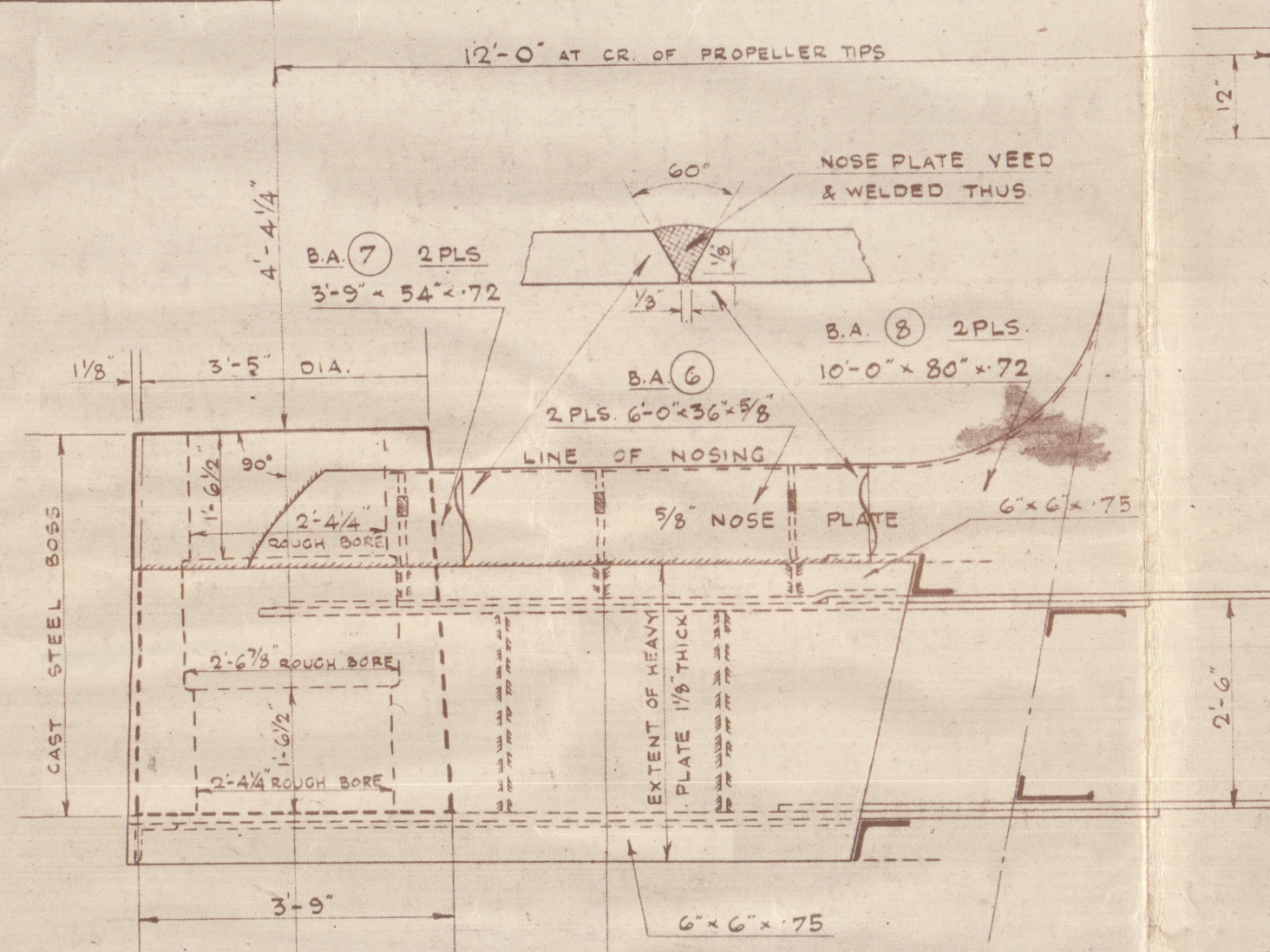
HOLES IN BACK POST TO HAVE  
 $\frac{1}{8}$ " SHEER BETWEEN A&B SECTIONS.



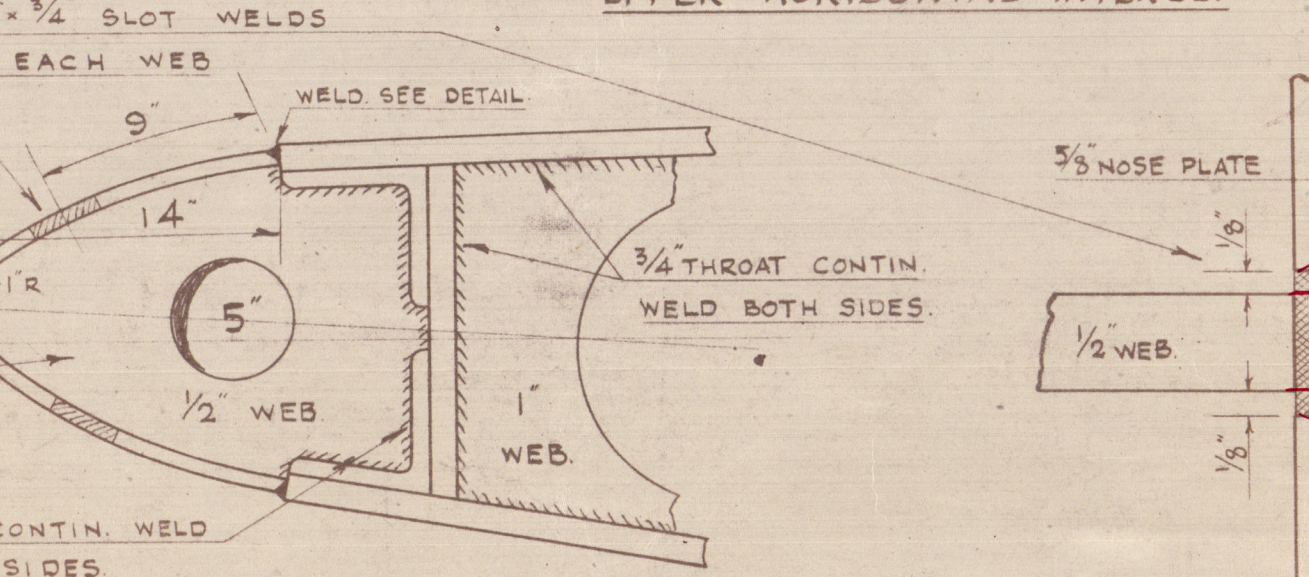
PLAN VIEW



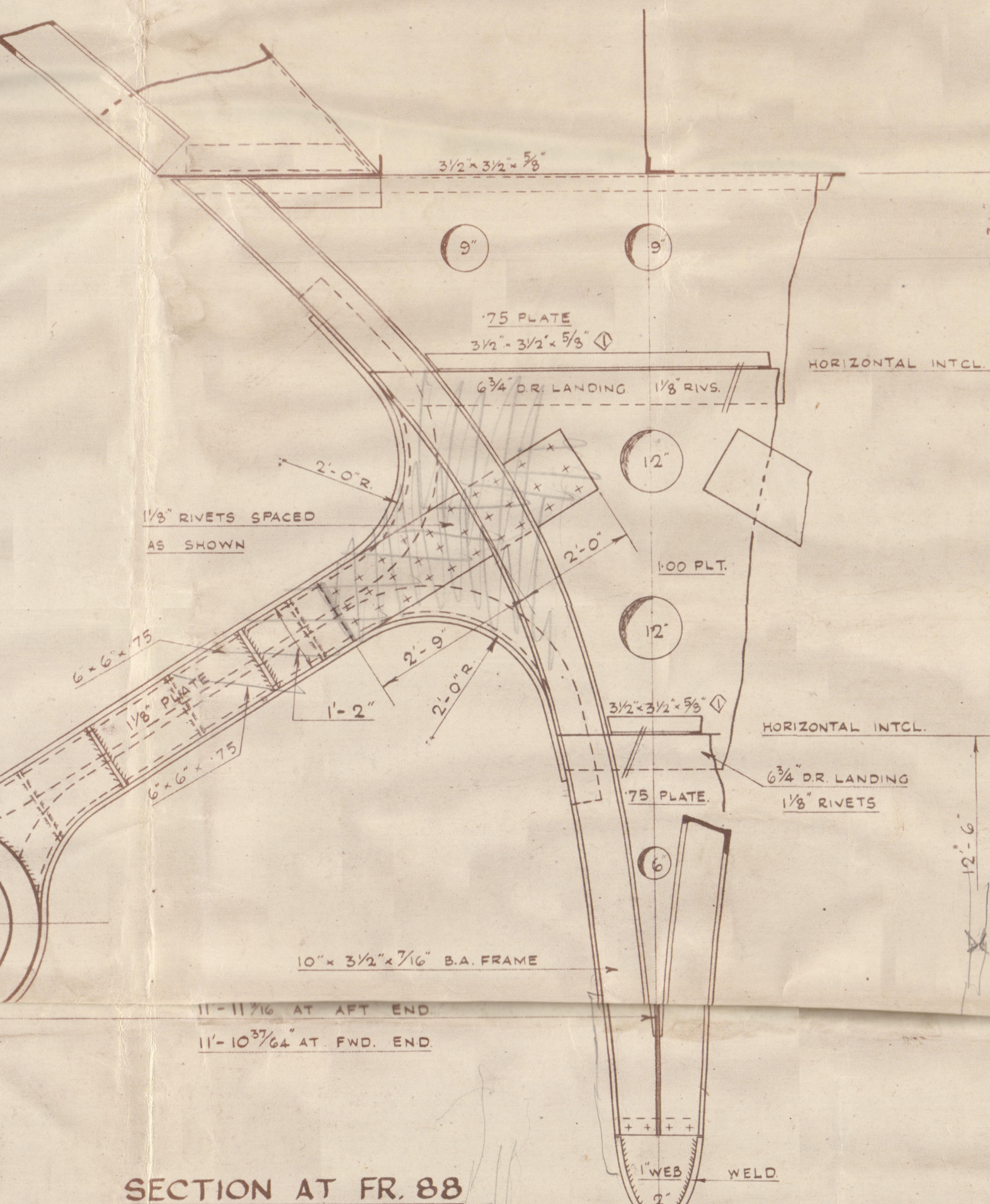
DETAIL OF RIVETING OF 6" x 6"  
BARS TO WEB PLATES, FLOORS,  
& BOSS ARM TOP & BOTTOM PLS.



SECTION AT FR. 87  
LOOKING AFT

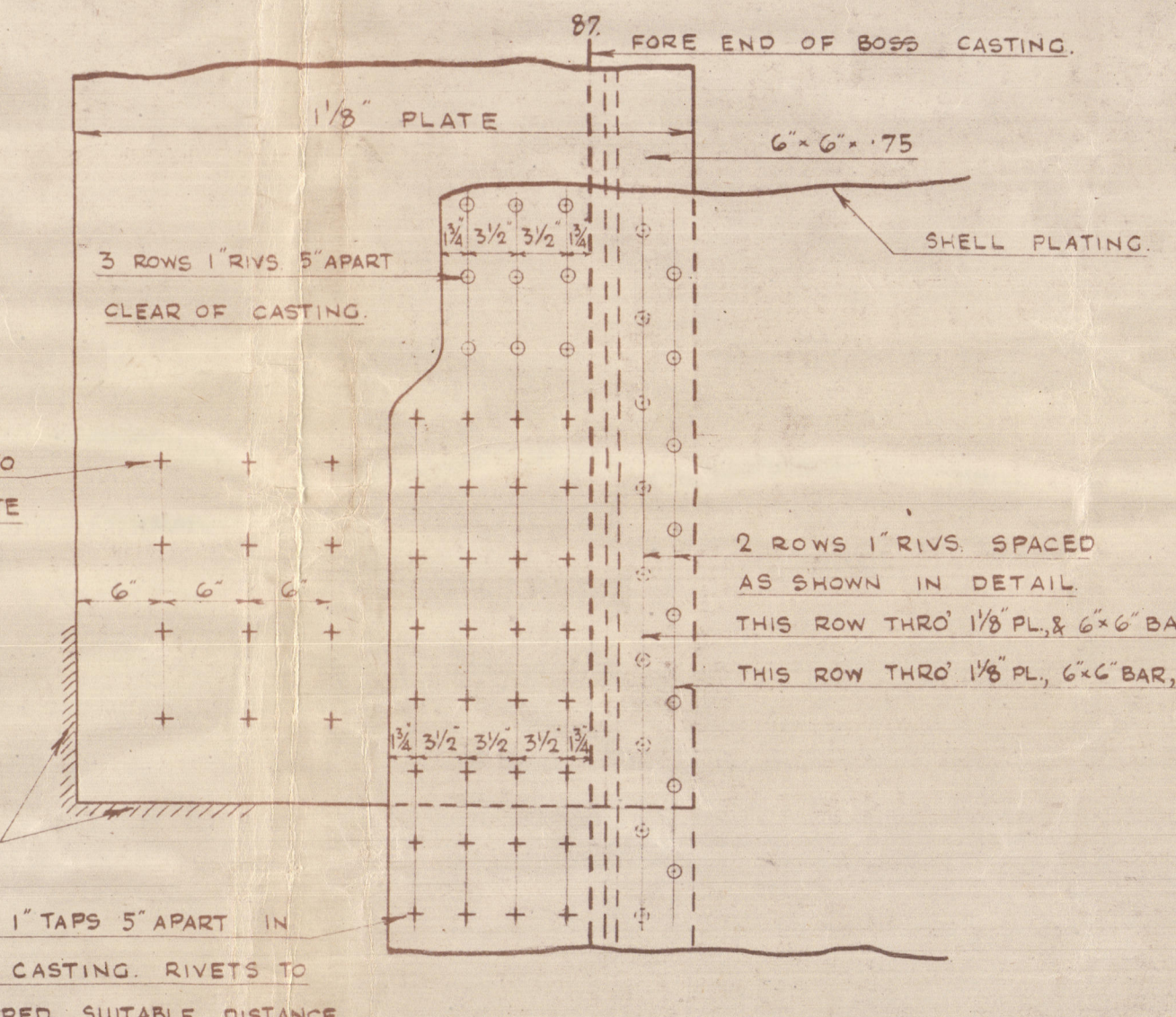


DETAIL OF WELDING OF NOSE  
PLATE TO BOSS ARMS.

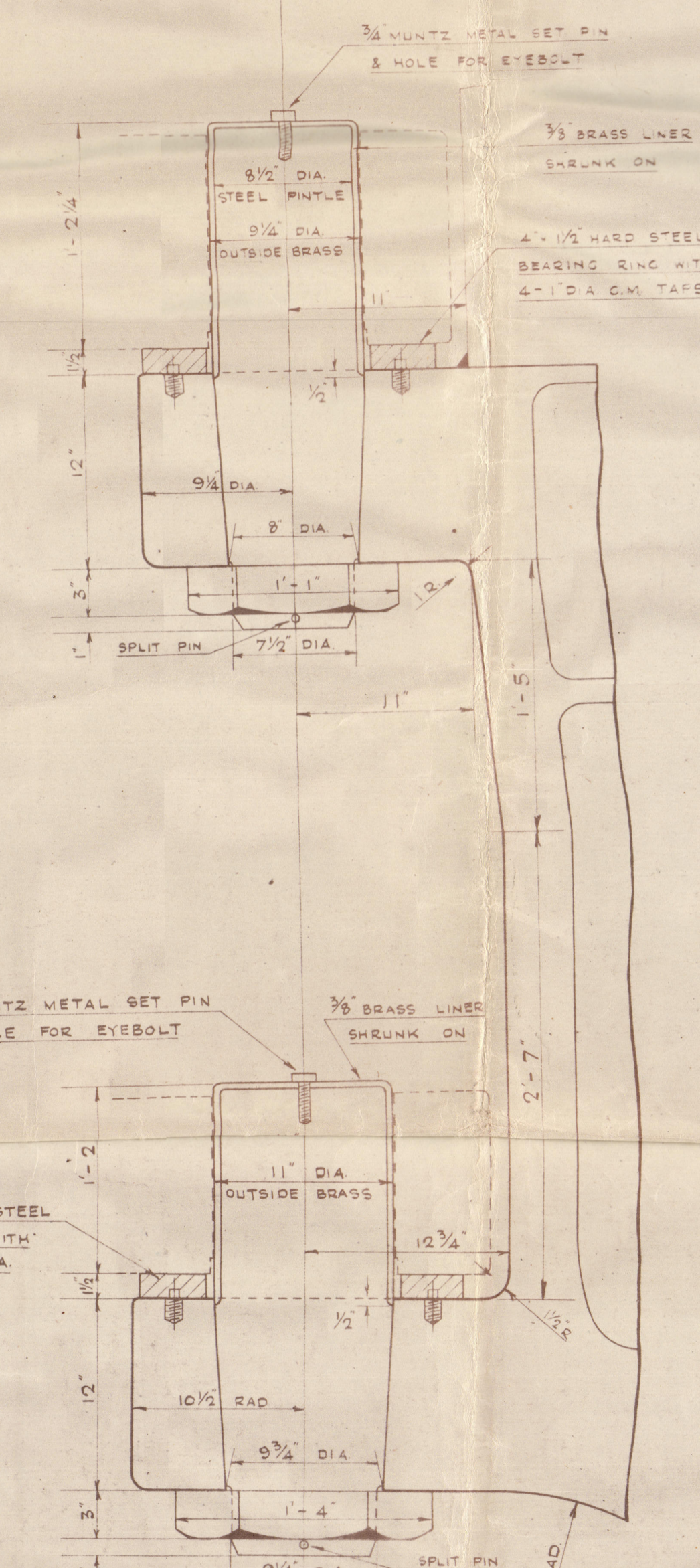


SECTION AT FR. 88  
LOOKING AFT

ELEVATION SHOWING  
SET BACK OF FR. 88.



DETAIL OF CONNECTION OF SHELL,  
& BOSS ARM TOP & BOTTOM PLATES  
TO BOSS CASTING.



DETAIL OF PINTLES & GUDGEONS.



15.5.42.

1004653-004661-00444





HW/3 MF 2S



© 2020

Lloyd's Register  
Foundation



17  
HARLAND & WOLFF LTD.  
BELFAST

No. 1161

TITLE *Stemfame + Boss arms*

DATE APPROVED 16.5.42.

JULIA

M/M 4656

5

EX  
"Waiwera" Bel. pl. No. 13856  
WAIWERA

004653 - 004661 - 0044



© 2020

Lloyd's Register  
Foundation