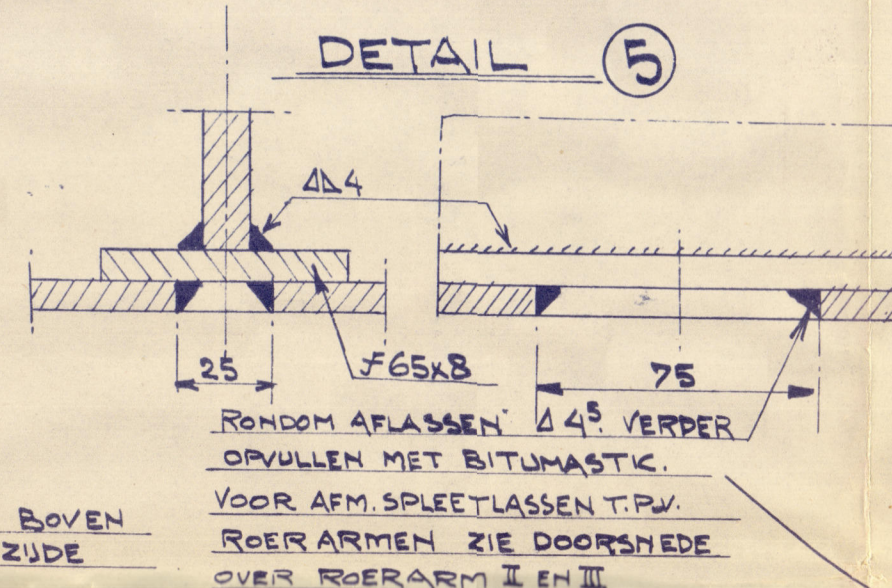
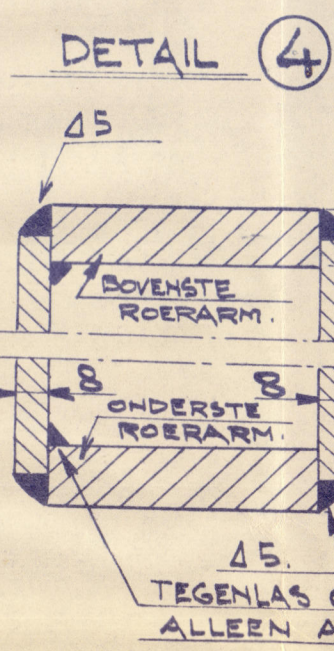
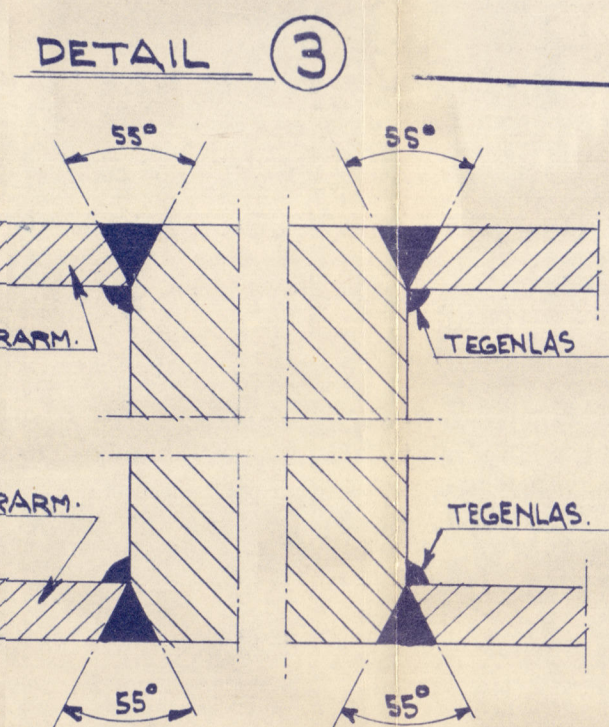
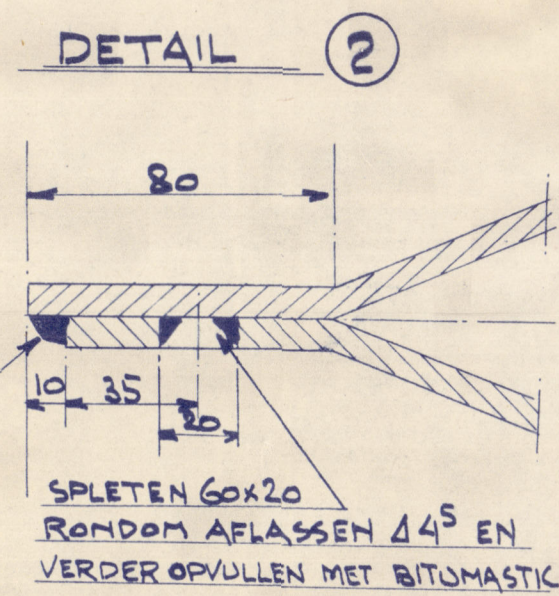
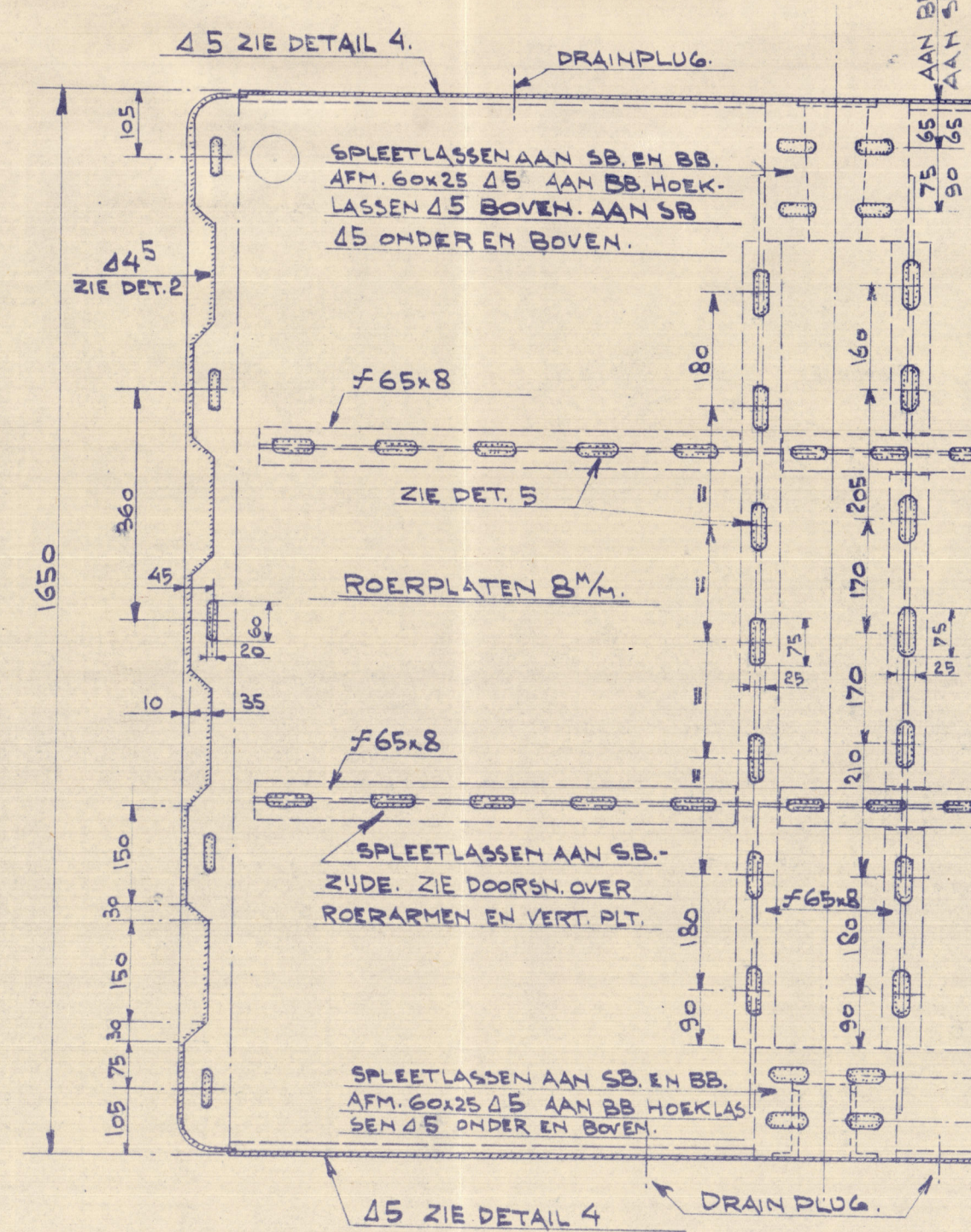
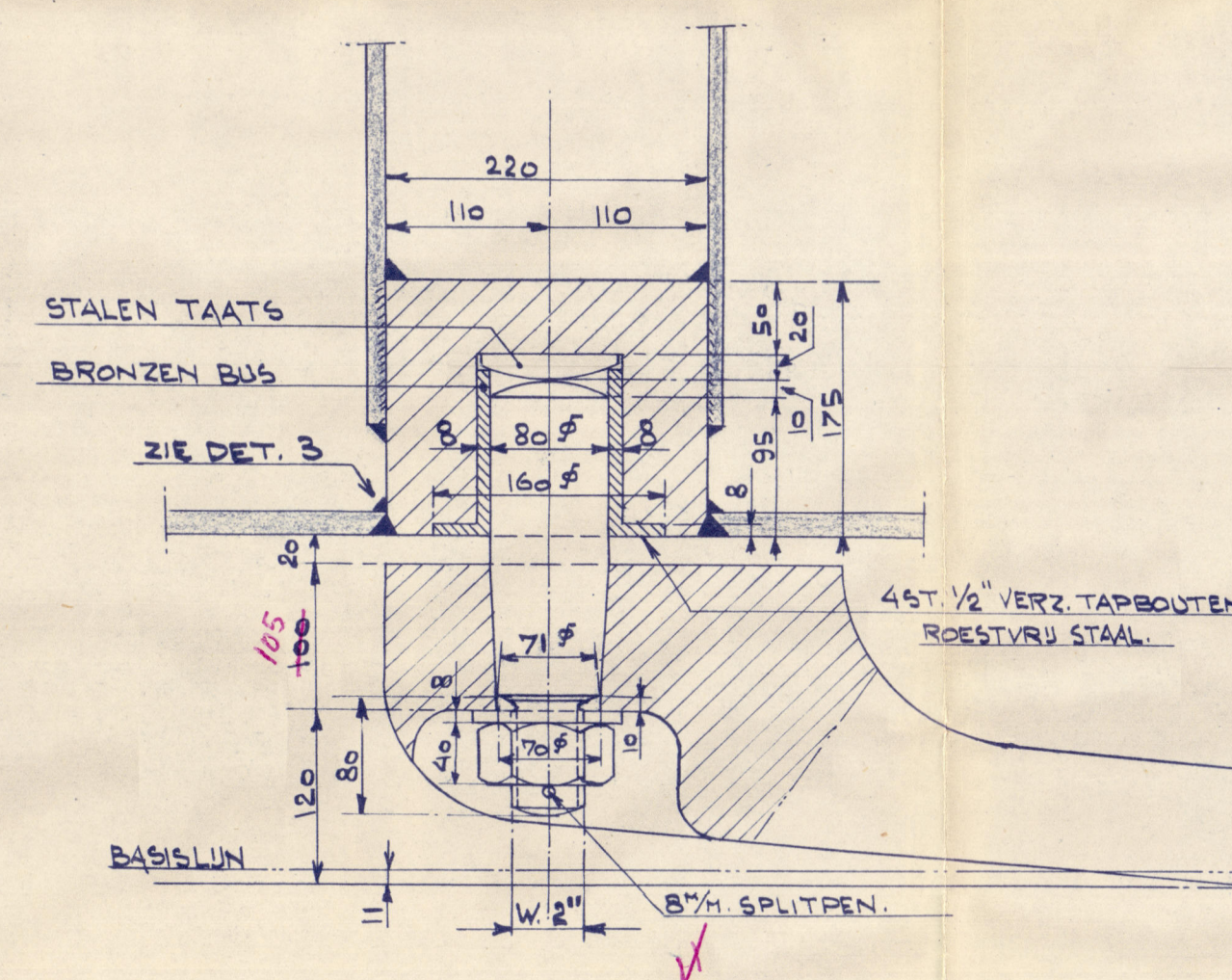
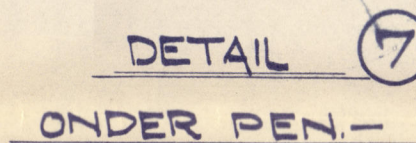
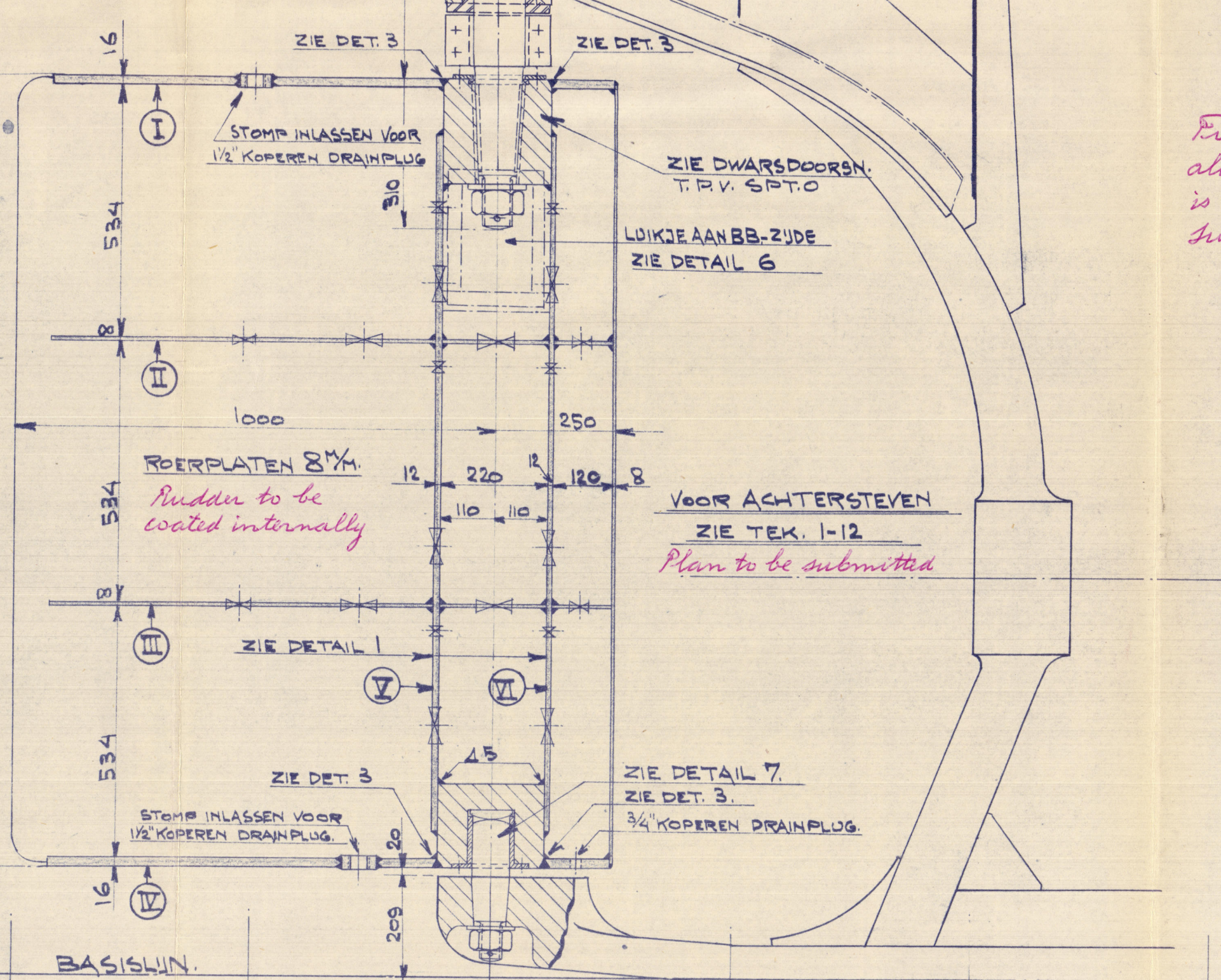
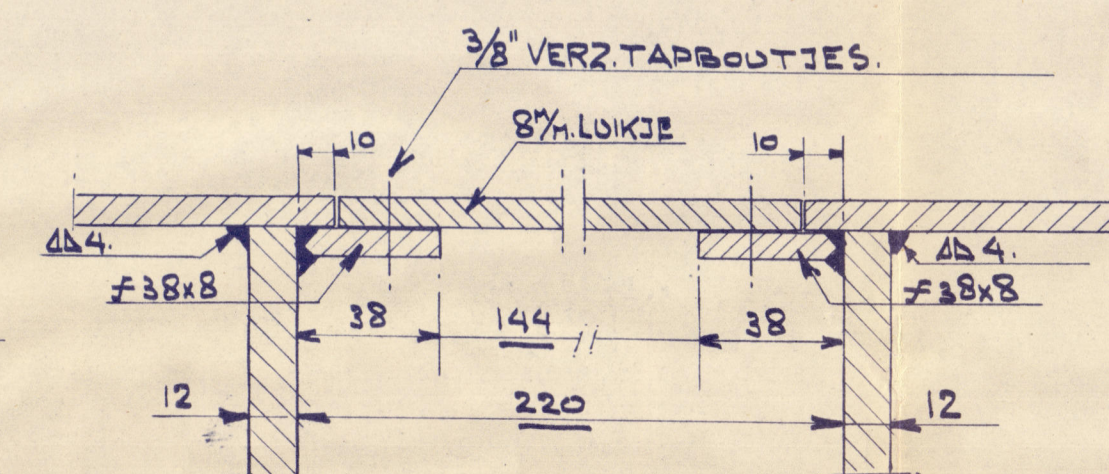
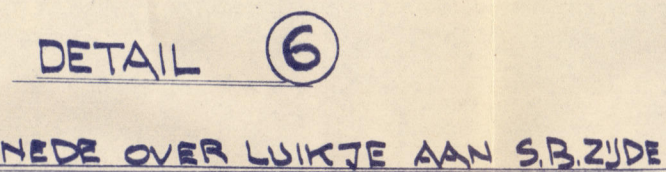
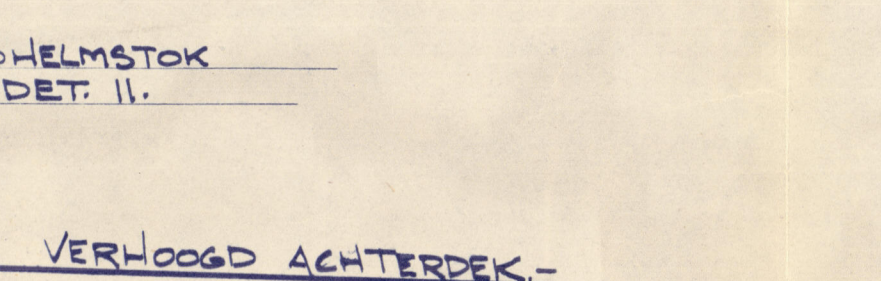
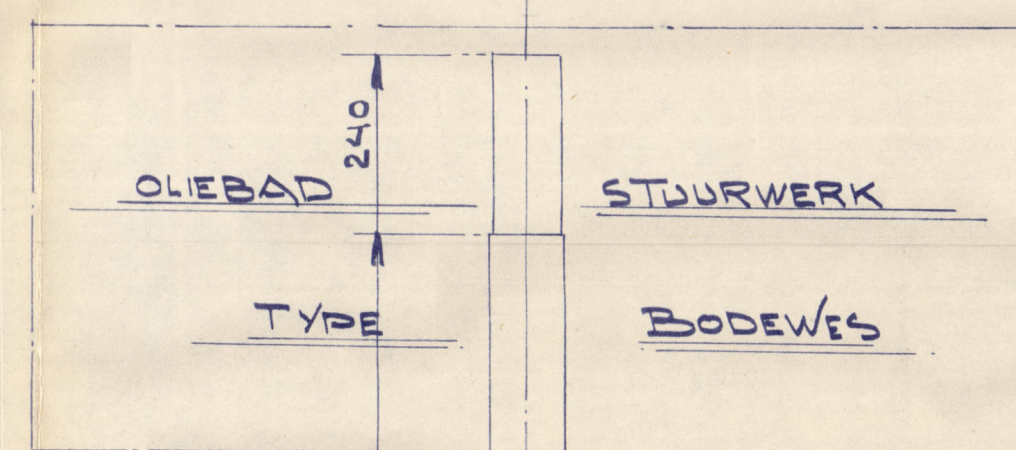


DETAIL ①

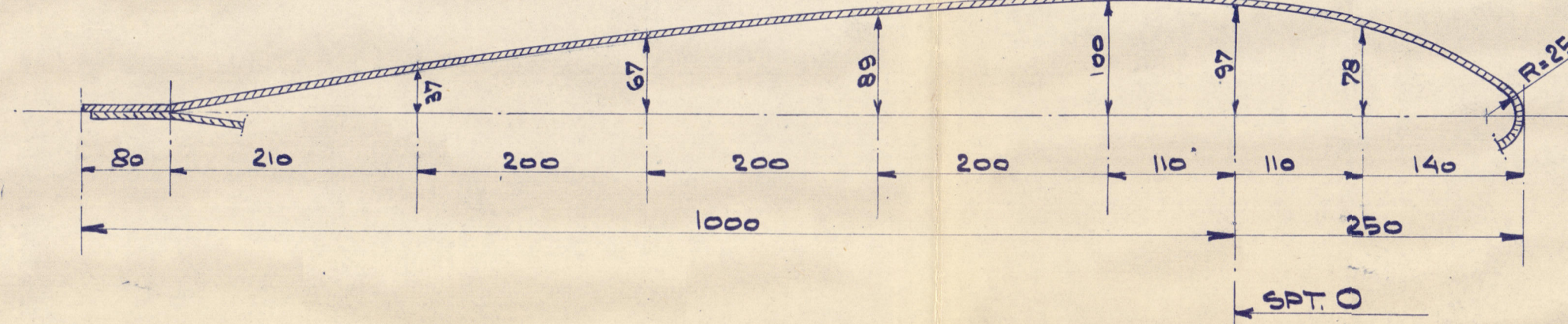
ZIJ-AANZICHT ROER

DOORSNEDE OVER ROER EN KONING
OP H.S.

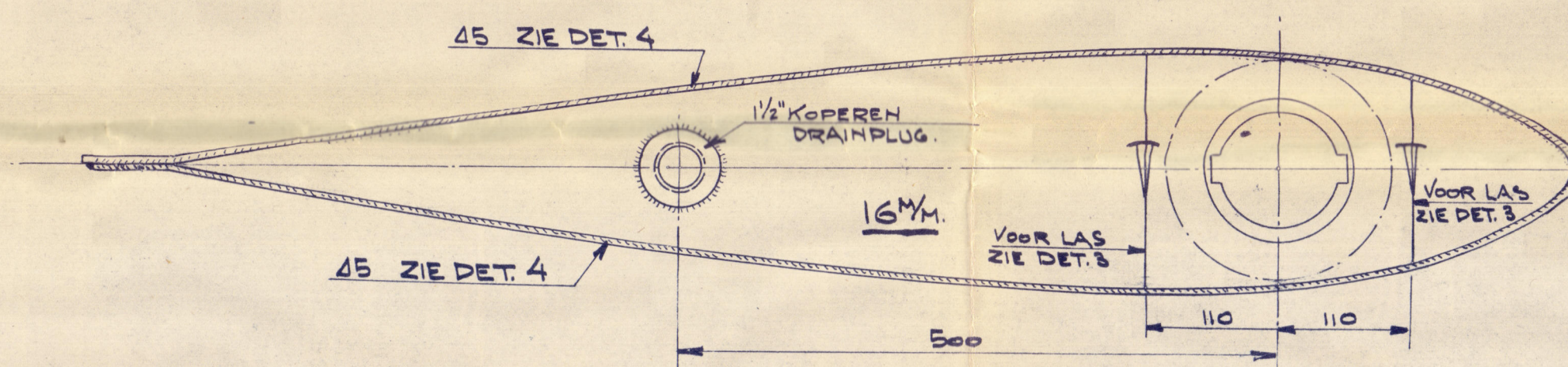


X Nuts of pintle & mudderhead
locked to Surveyors
satisfaction

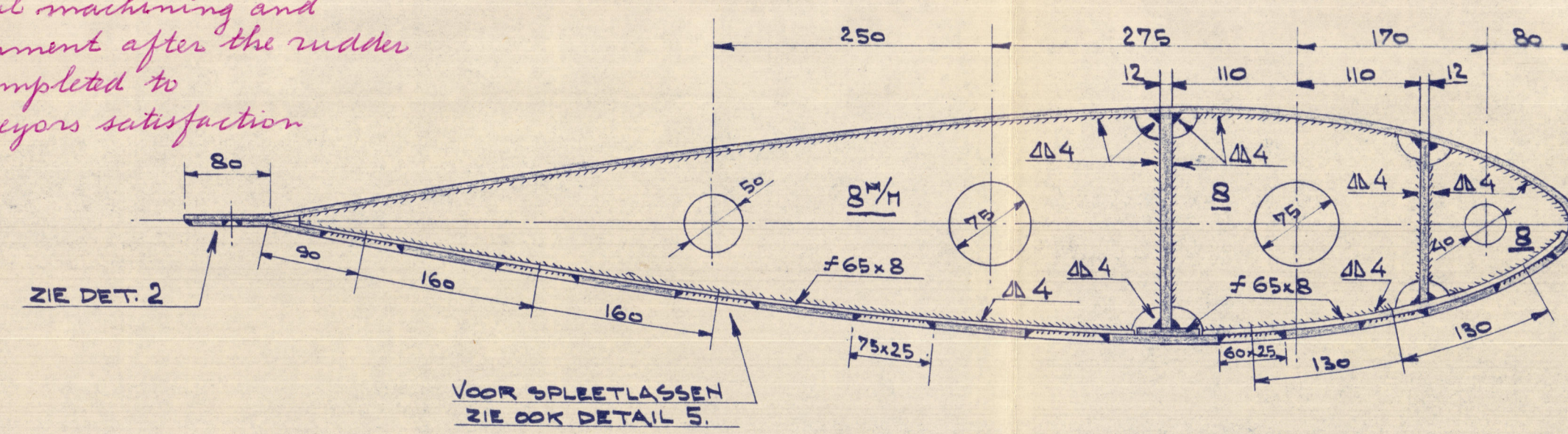
MAATSCHETS ROERVORM.-



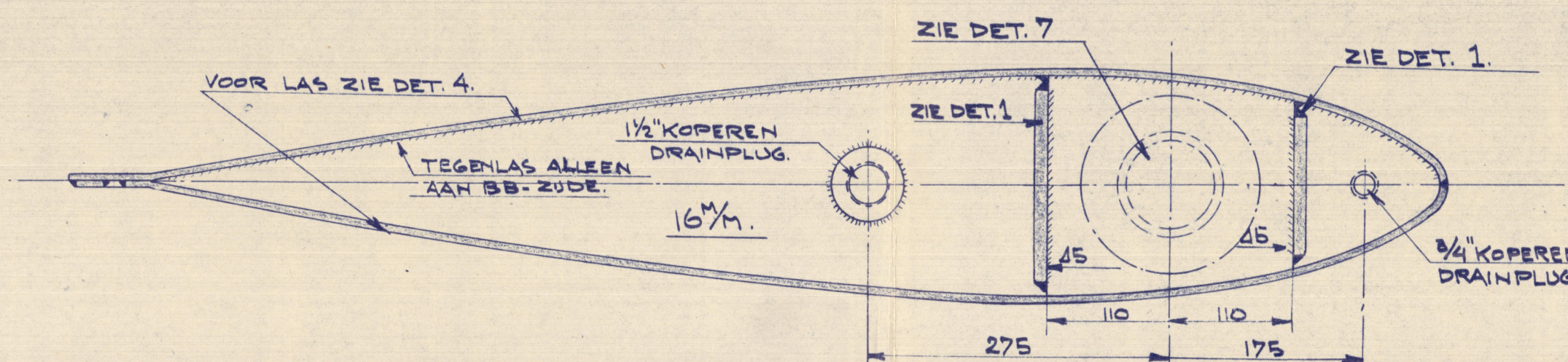
DOORSNEDE OVER BOVENSTE ROERARM GEMERKT "I"



DOORSNEDE OVER ROERARMEN GEMERKT "II" EN "III"

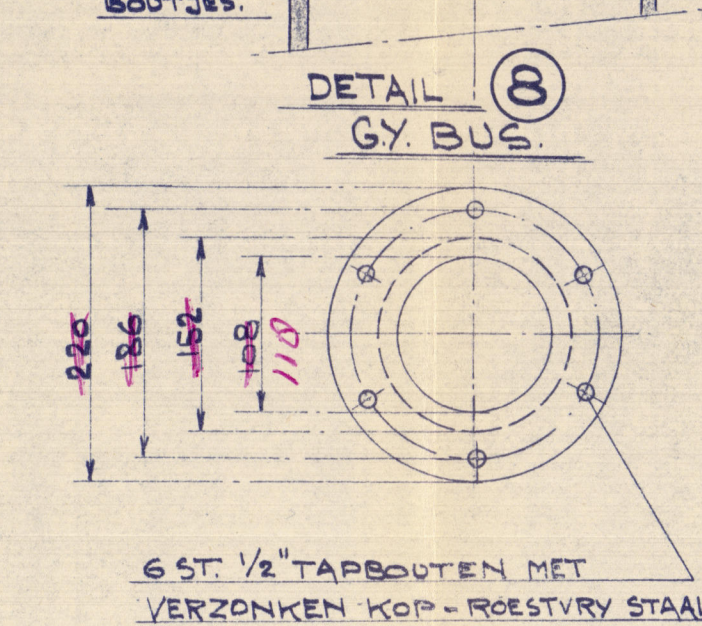
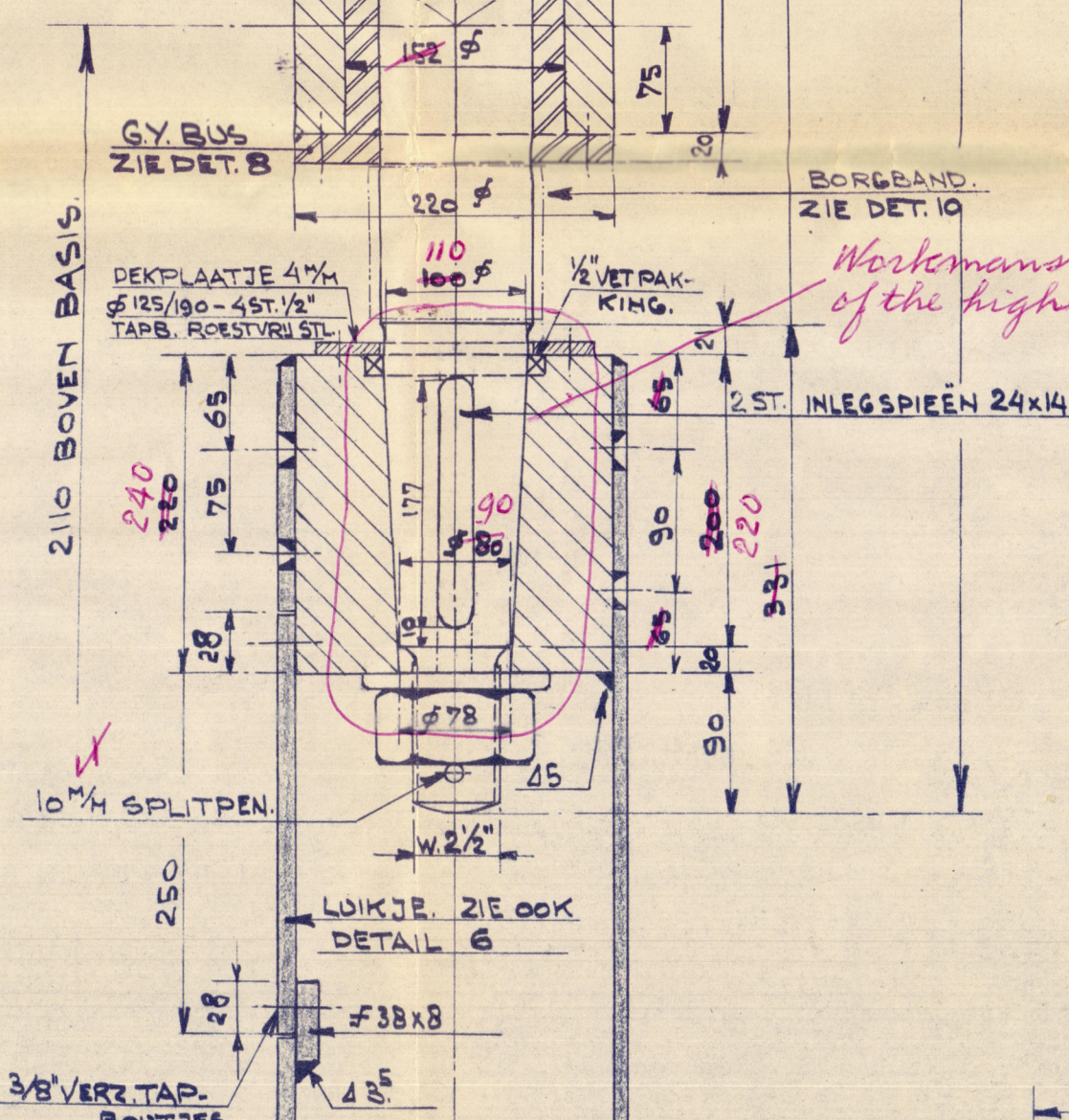
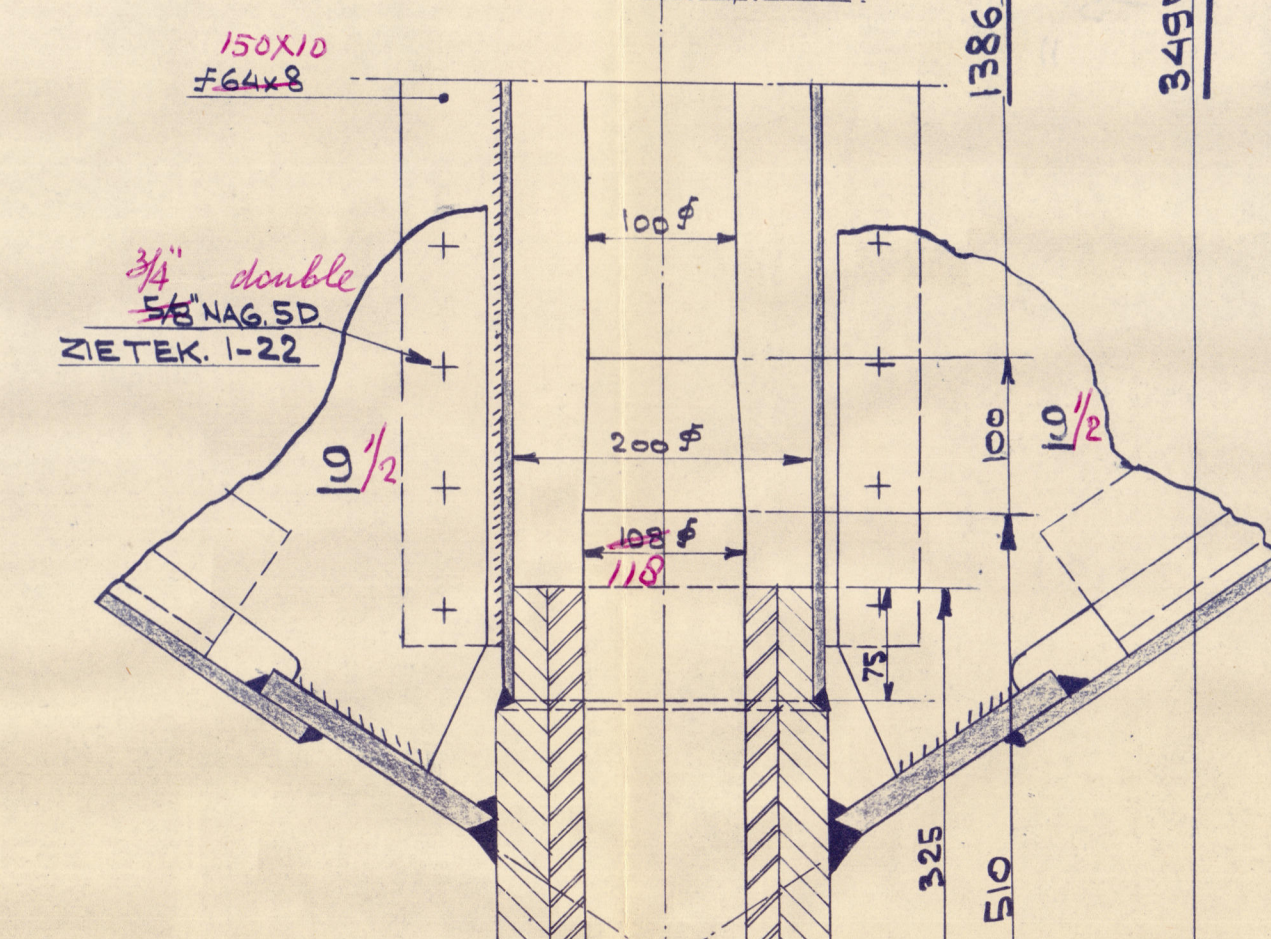
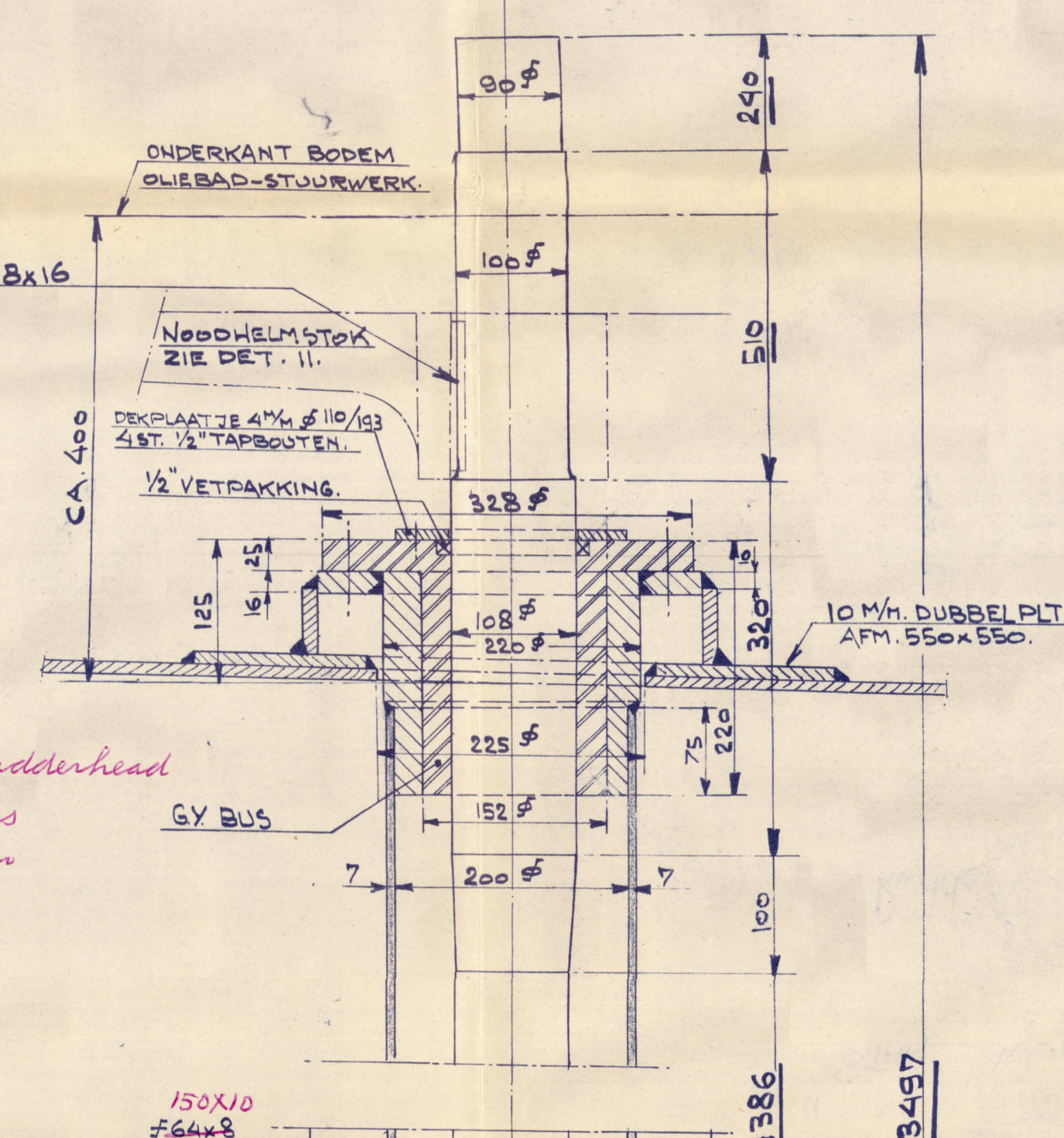


DOORSNEDEN OVER ONDERSTE ROERARM GEMERKT "IV"

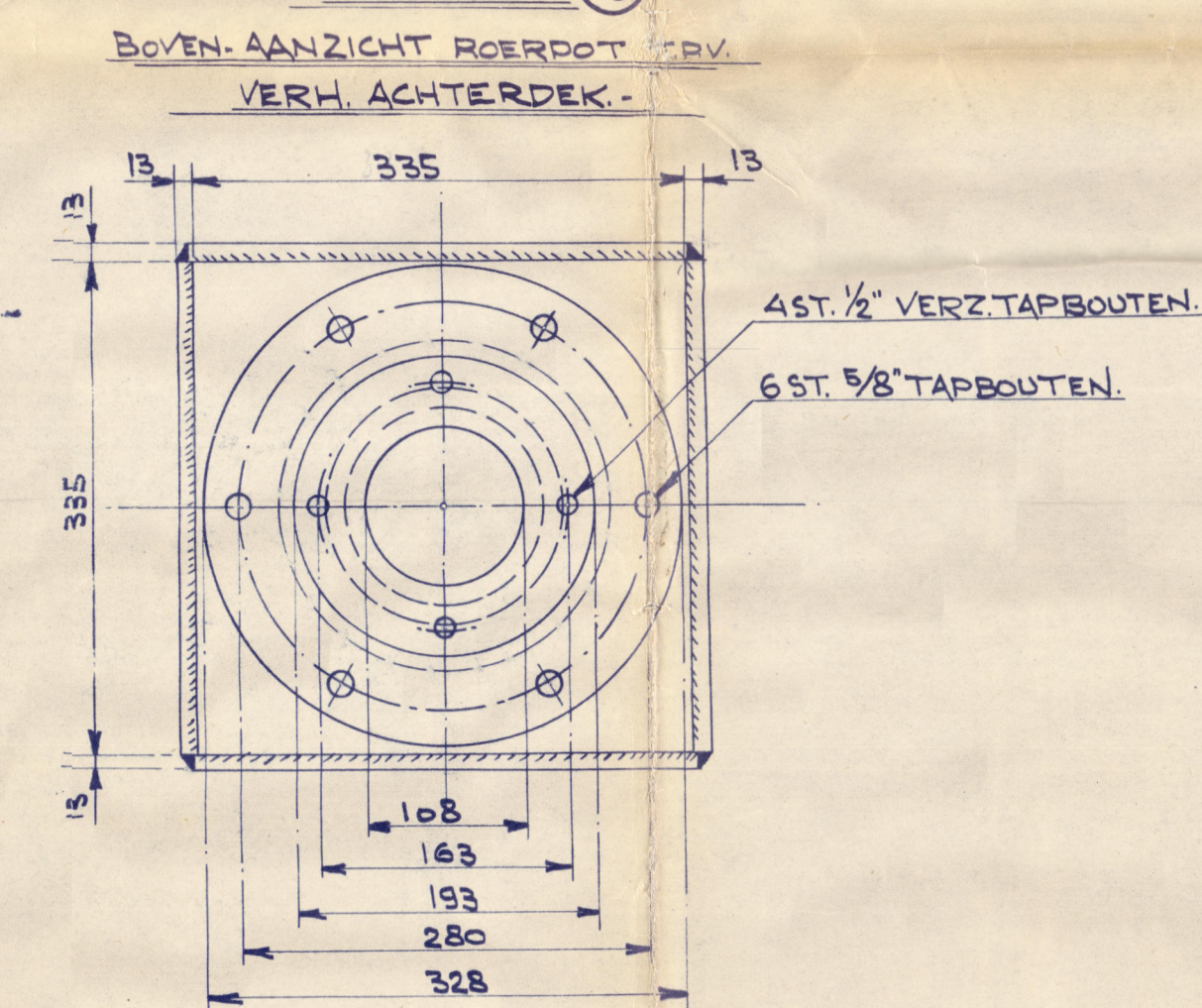


ROER INWENDIG CONSERVEREN MET BITUMASTIC.

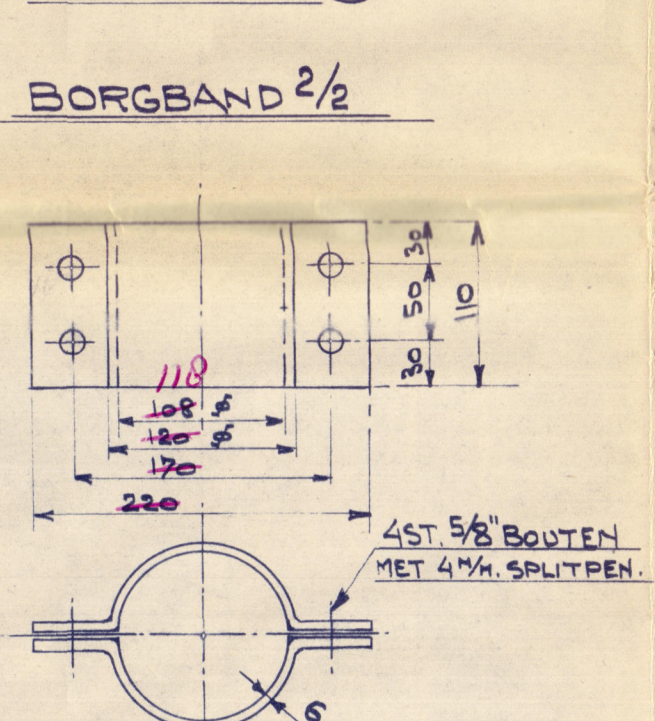
DWARSDOORSNEDE T.P.V. SPT. O.



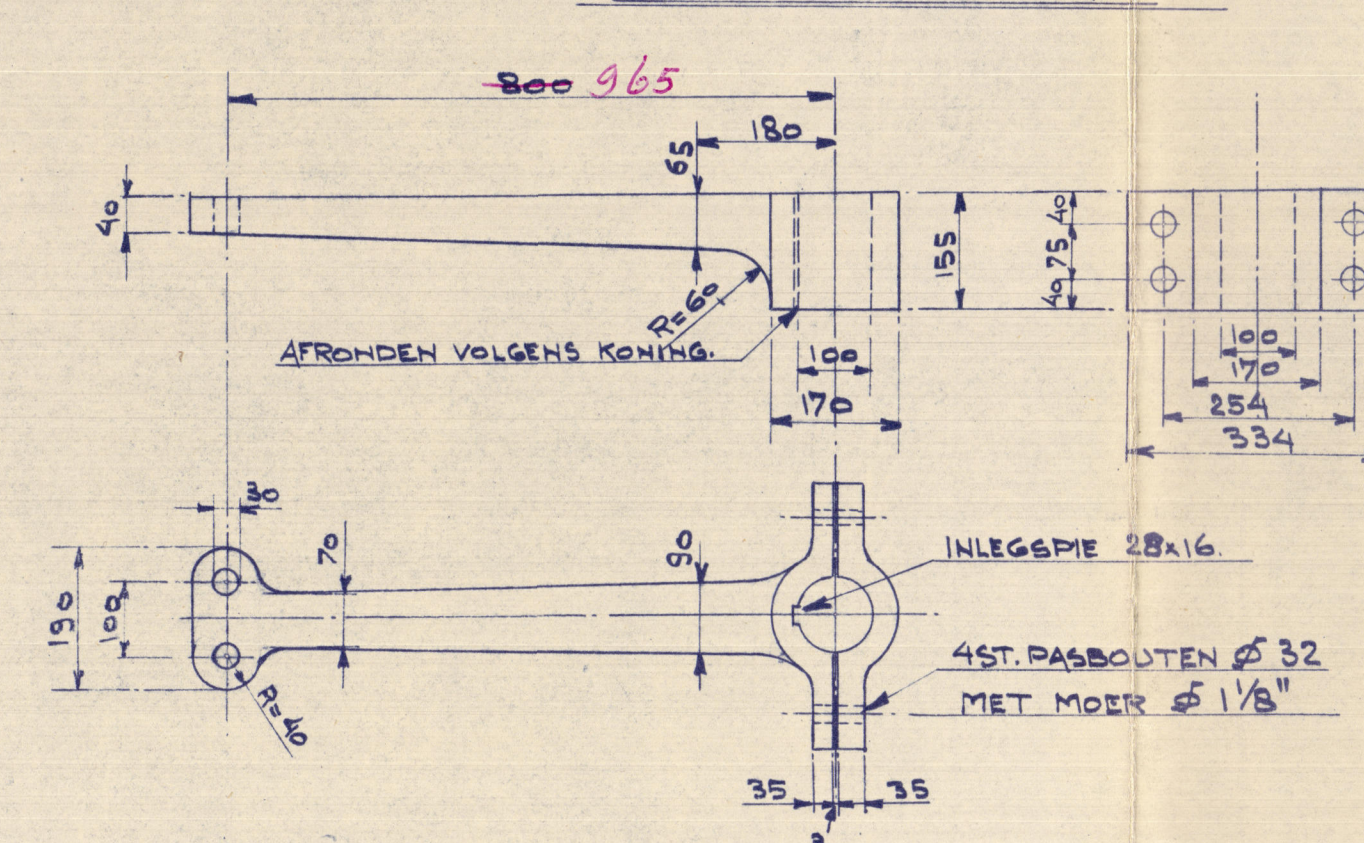
DETAIL (9)



DETAIL (10)



DETAIL (11)
WOOD HELMSTOK.



HOOFD AFMETINGEN:

LENGTE O.A. : _____ 43,56 m.
 " L.L. : _____ 40, — "
 BREEDTE OP SPANTEN : _____ 7,95 "
 HOLTE 1/6. ZUDE : _____ 2,60 "
 DIEPGANG : _____ 2,20 "

SPANT AFSTAND VAN VOOR TOT ACHTER
= 500 m/m.

MOTOR:

"LISTER BLACKSTONE" TYPE "E.V.M.G.R. 6"
243 B.H.P. 600 %/m. REDUCTIE 2:1
SCHROEF 300 %/m. DIAM. 1440 %/m.
V = 7 1/2 KN./OOR.

CLASS: LLOYD'S REGISTER OF SHIPPING 100A.I.
"HOPPER DREDGER" FOR SERVICE IN THE "BRISTOL CHANNEL"
AND FITTED FOR CARRYING AND PUMPING SAND.-

STAN WOOLAWAY

Q/H
1970

BELONGS TO
ROTTERDAM REPORT No. 40798A

| | | | |
|----------------------|----------|----------------------|--------------|
| N.V. SCHEEPSWERF | | GEBR. VAN DER WERF | |
| DEEST IN NIMEGEN | | — HOLLAND | |
| SCHAAL | 1:10-5-2 | ROER | MET DETAILS. |
| GETEKEND | 1890 | | |
| GECALQUEERD | | | |
| DATUM | 6-6-55 | | |
| ALGEMEEN VERPONDEN | 6-6-55 | | |
| ONTWIKEN | | | |
| GEWUZZIGD | | | |
| TEEK. N ^o | 1-13 | BOLW. N ^o | 261 |

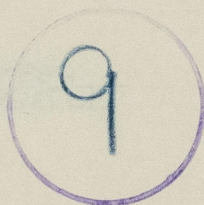
0014/11/6 0014/6 S2, 017

"STAN WOOLAWAY"



Rudder

RECORDS DEPT.,
LONDON.



© 2021

Lloyd's Register
Foundation

004646-004652-0173