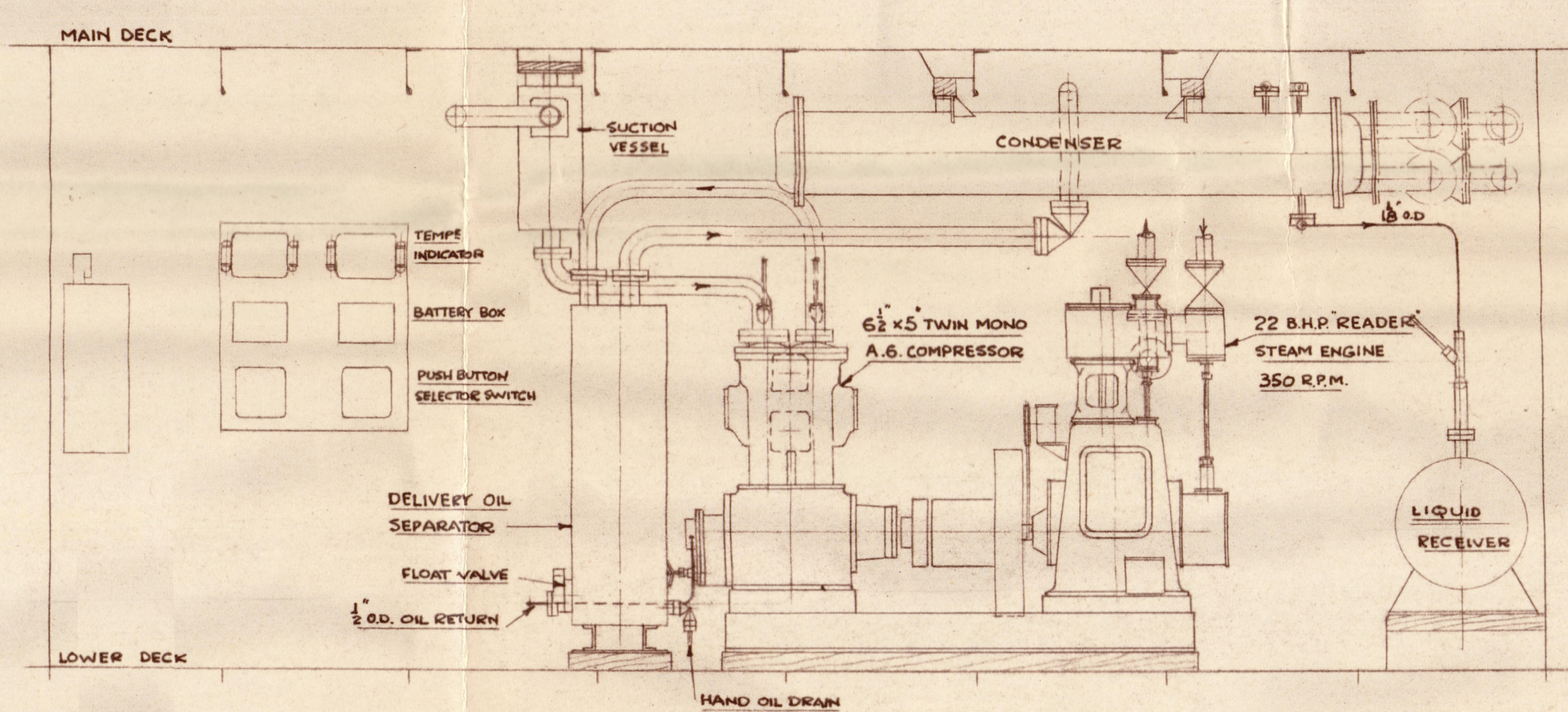
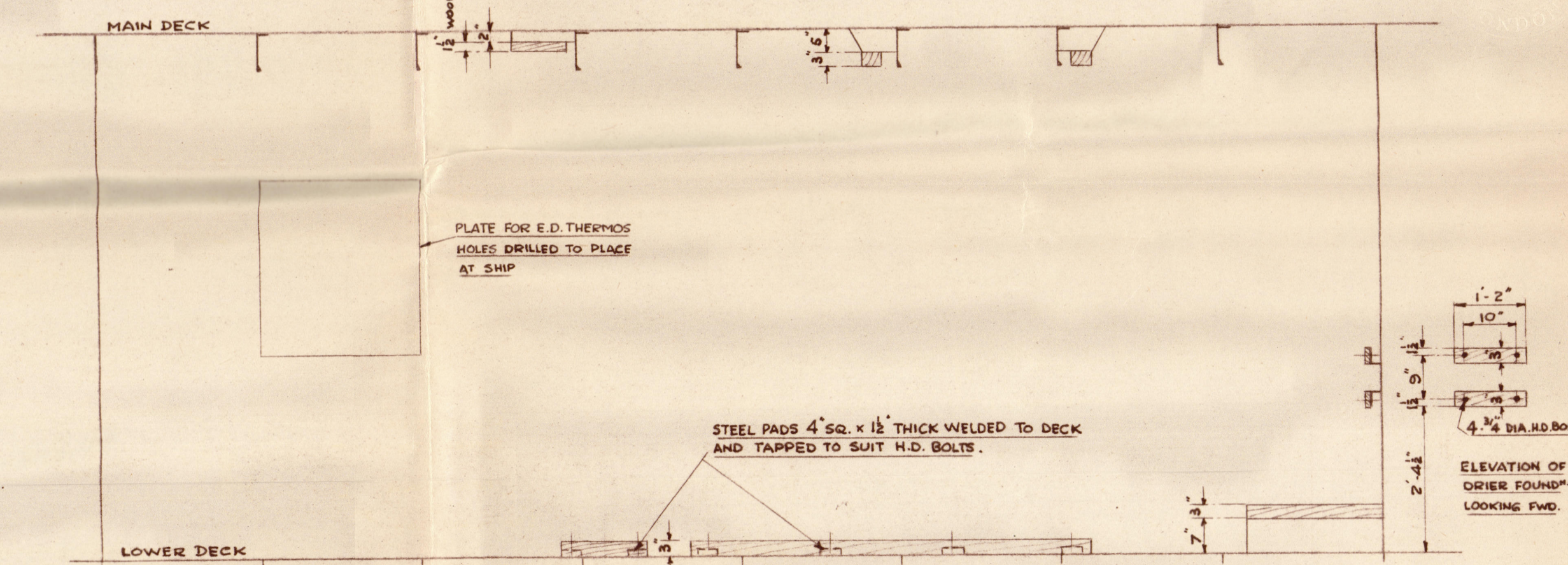


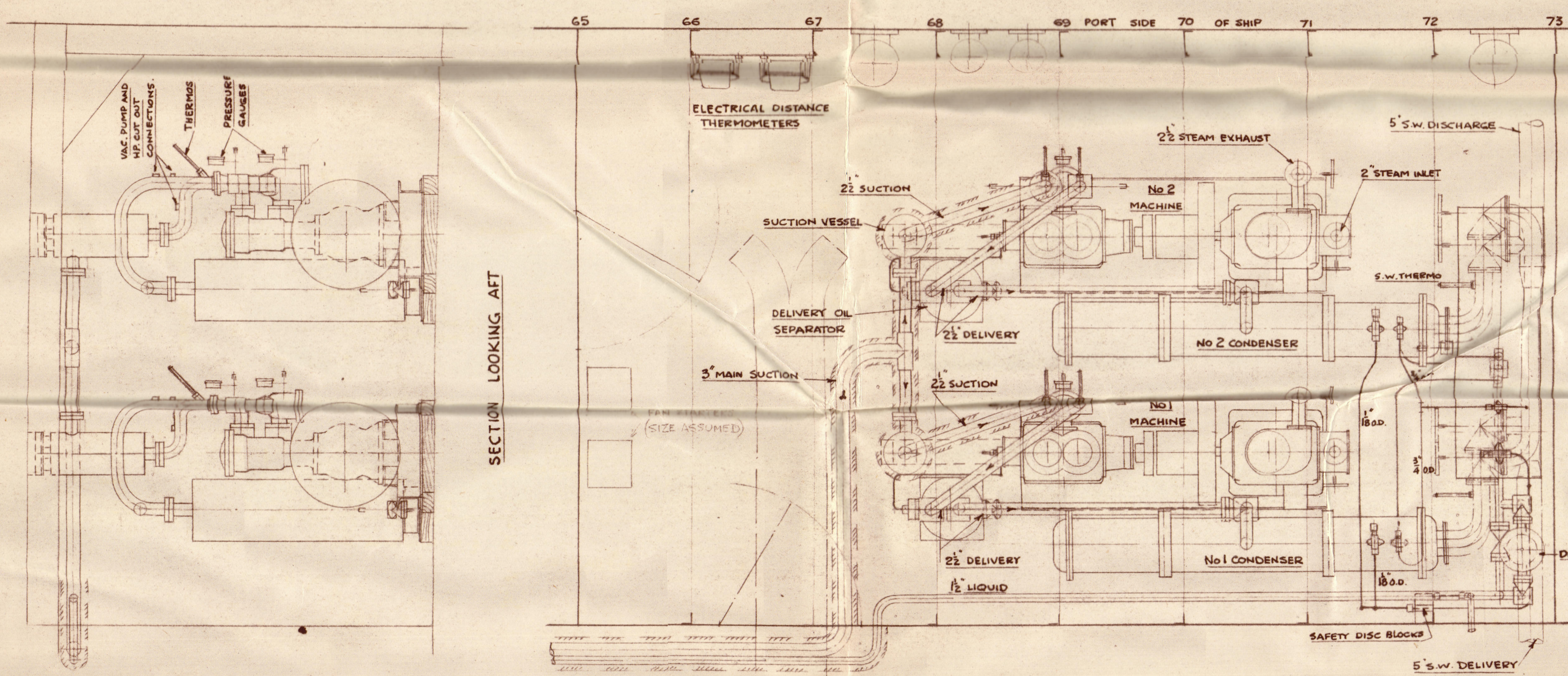
22 OCT 1957



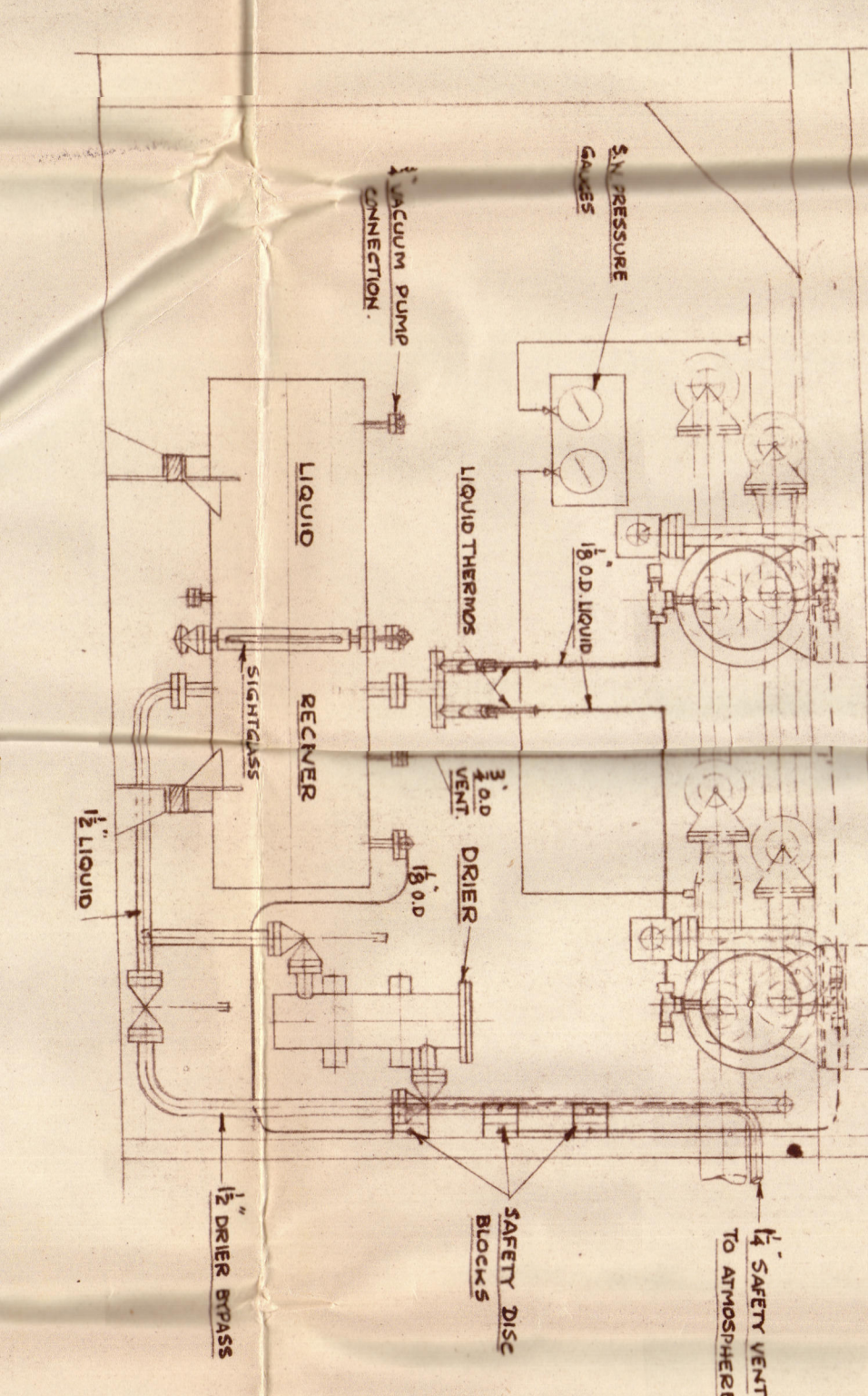
ELEVATION LOOKING TO PORT



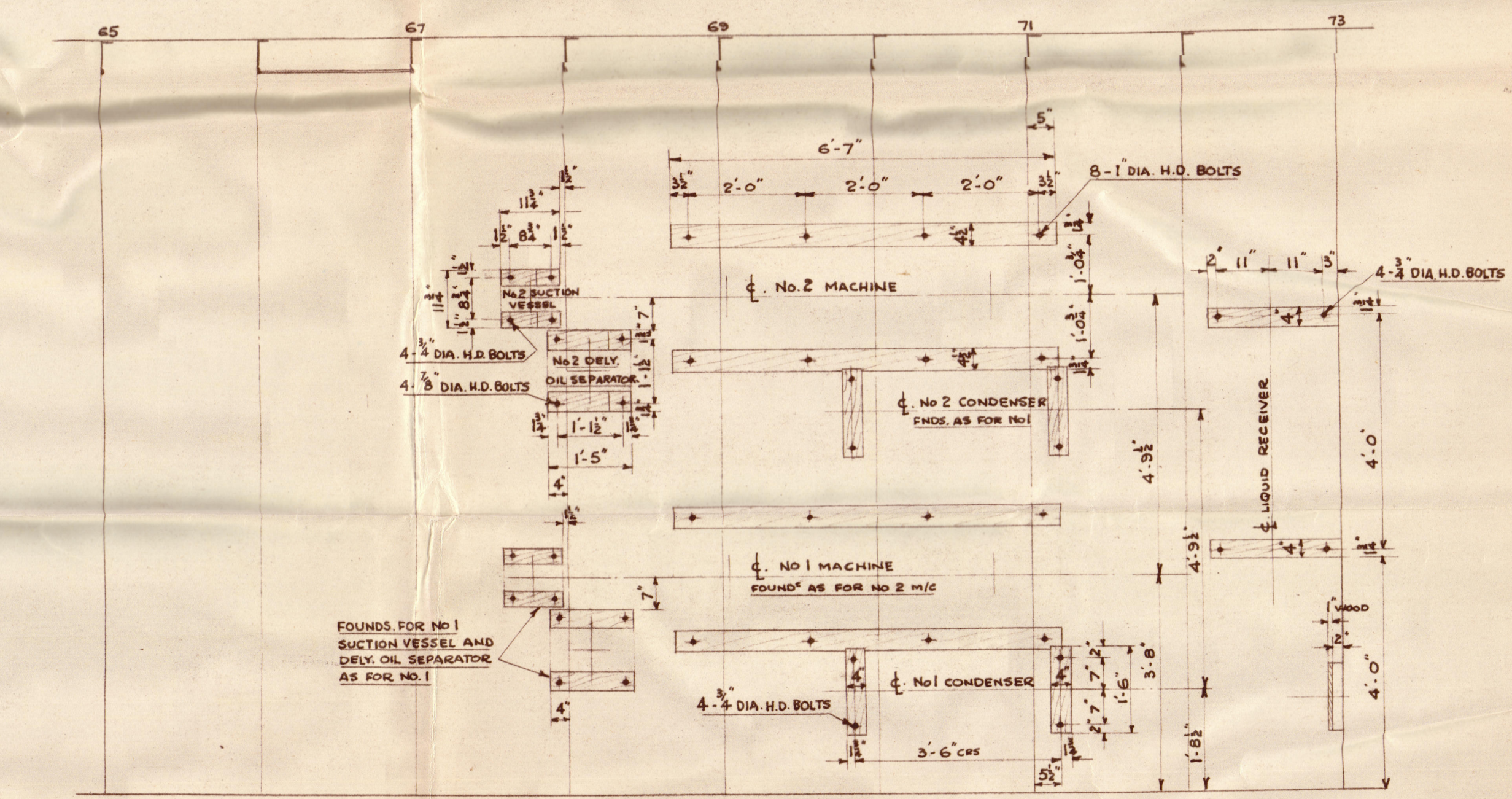
ELEVATION LOOKING TO PORT



SECTION LOOKING AFT



SECTION LOOKING FWD



PLAN OF FOUNDATIONS

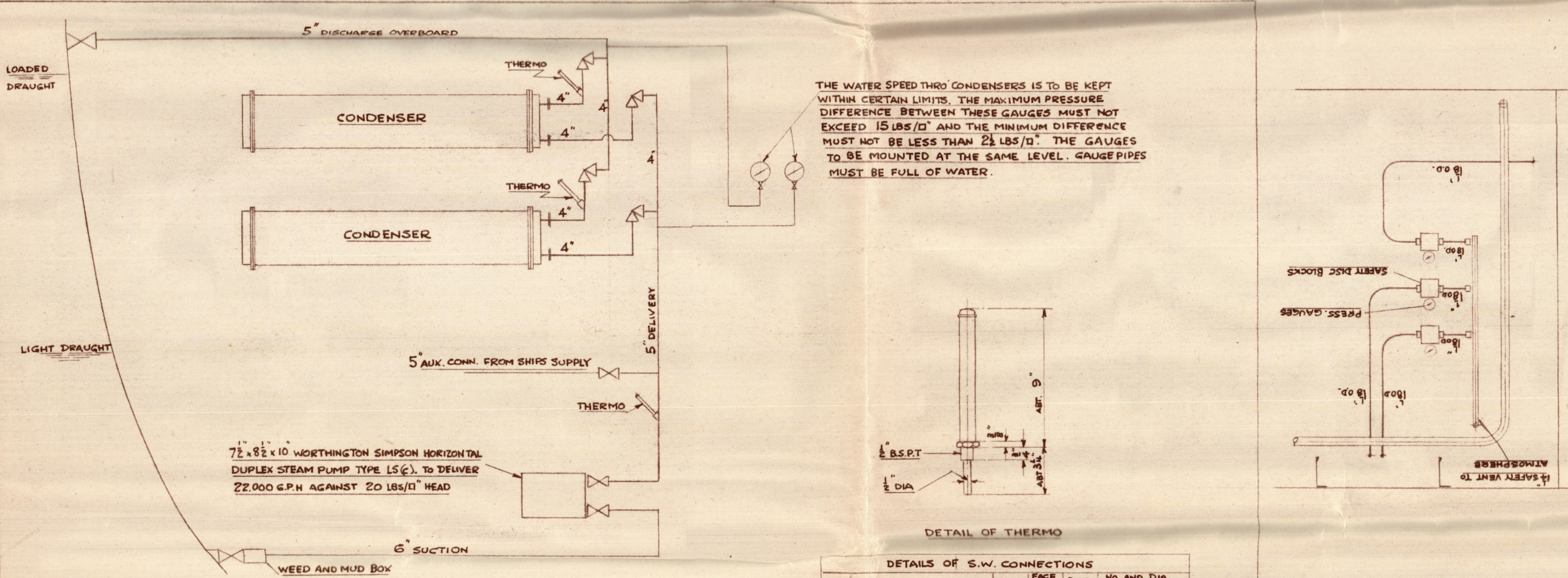


DIAGRAM OF SEA WATER CIRCULATION

| DETAILS OF S.W. CONNECTIONS | | | | |
|-----------------------------|-----------|-----------|--------|-----------------------|
| FLANGE | BORE DIA. | FACE DIA. | P.C.D. | NO. AND DIA. OF BOLTS |
| CONDENSER INLET | 4" | 8 1/2" | 7" | 4 - 5/8" |
| " OUTLET | 4" | 8 1/2" | 7" | 4 - 5/8" |
| PUMP SUCTION | 6" | 11" | 5 1/2" | 8 - 5/8" STUDS |
| " DELIVERY | 5" | 10" | 8 1/2" | 8 - 5/8" STUDS |

NOTE.
WATER PUMP, CONDENSERS, THERMOS AND PRESSURE GAUGES SUPPLIED BY J. & E. HALL LTD.
WATER PIPING, VALVES AND BOSSES FOR THERMOS, NOT SUPPLIED BY J. & E. HALL LTD.
IF STEEL PIPING IS USED THE INLET PIPES TO THE CONDENSERS ARE TO BE UNGALVANISED FOR AT LEAST 6 FT. FROM THE CONDENSER INLET.
PUMP TO BE FITTED BELOW LIGHT DRAUGHT LINE.

| | | | |
|----------|---|---------|--------------|
| CHECKED | 5 | | |
| | 4 | | |
| TRACED | 3 | | |
| | 2 | | |
| DRAWN | | | |
| L. J. C. | 1 | 9.10.57 | MODIFICATION |

NOTES.
GAS PIPING TO BE THOROUGHLY CLEANED AND DRIED OUT BEFORE ERECTION AND ALL PIPING TO BE EFFICIENTLY CLIPPED AND SUPPORTED.
SUCTION PIPES AND VESSELS TO BE INSULATED WITH 1 1/2" THICK CORK SHELL OR EQUIVALENT. INSULATION NOT SUPPLIED BY J. & E. HALL LTD.
STEAM INLET AND EXHAUST VALVES FOR COMPRESSOR STEAM ENGINES AND S.W. PUMP SUPPLIED BY J. & E. HALL LTD.
NO OTHER STEAM PIPING SUPPLIED BY J. & E. HALL LTD.
SHIPS STEAM SUPPLY 120 LBS P.S.I.
LLOYD'S REQUIREMENTS FOR ARCTON & GAS PIPING.
THE NUMBER OF JOINTS IN THE SYSTEM TO BE KEPT TO A MINIMUM AND TO BE WELDED EXCEPT WHERE FLANGES ARE REQUIRED FOR ACCESS OR OVERHAUL OF UNITS. PIPE LINES AFTER WELDING AND COMPLETING AND BEFORE THE WELDS ARE PAINTED, TO BE SUBJECT TO LLOYD'S TESTS (500 P.S.I. WITH OIL AND 200 P.S.I. WITH NITROGEN WITH ARCTON G ADDED TO ENABLE A TEST LAMP TO BE APPLIED TO EXPOSE ANY POROSITY IN THE WELDS), IN THE PRESENCE OF THEIR SURVEYOR. ALL GAS PIPING REQUIRING INSULATION TO BE EXTERNALLY GALVANISED. GALVANISING TO BE LEFT OFF OR STRIPPED FOR A MAXIMUM OF 1 1/2" EACH SIDE OF EACH WELDED JOINT. AFTER TESTING THIS UNGALVANISED PORTION TO BE COATED WITH PROTECTION SUCH AS GOLD SIZE, WRAPPED WITH INSULATING TAPE AND RECOATED. A RED RING TO BE PAINTED ON THE OUTSIDE OF THE INSULATION IN WAY OF WELD. FLANGES OF INSULATED PIPES TO BE LEFT EXPOSED.

NOTES.
PROVISION TO BE MADE FOR SHIPPING MACHINERY INTO POSITION.
WOOD SEATINGS TO BE OF PITCH PINE OR TO OWNER'S REQUIREMENTS AND TO BE LEVEL IN ALL DIRECTIONS.
HOLES FOR HOLDING DOWN BOLTS TO BE MARKED OFF FROM UNITS OR DRILLED AFTER UNITS ARE IN POSITION.
SCUPPERS TO BE ARRANGED BY SHIPBUILDERS.
SUNDRY STRAPS, ANGLES AND CHANNELS ETC. FOR SUPPORTING PURPOSES TO BE SUPPLIED AND ARRANGED BY BUILDERS, POSITIONS TO BE ARRANGED IN CONJUNCTION WITH J. & E. HALL'S ERECTOR.
STEELWORK, WOOD SEATINGS AND H.D. BOLTS NOT SUPPLIED BY J. & E. HALL LTD.

| DETAILS OF STEAM CONNECTIONS | | | | |
|------------------------------|--------|-----------|--------|-----------------------|
| FLANGE | BORE | FACE DIA. | P.C.D. | NO. AND DIA. OF BOLTS |
| COMPRESSOR ENGINE INLET | 2" | 6 1/2" | 5" | 4 - 5/8" |
| " " EXHAUST | 2 1/2" | 6 1/2" | 5" | 4 - 5/8" |
| S.W. PUMP INLET | 1 1/2" | 5 1/2" | 4 1/2" | 4 - 5/8" |
| " " EXHAUST | 2" | 5 1/2" | 4 1/2" | 2 - 5/8" STUDS |

| APPROXIMATE WEIGHTS | | | |
|---|------|------|-----|
| ITEM | TONS | CWTS | QES |
| COMPRESSOR WITH STEAM ENGINE & BASEPLATE EACH | 2 | 10 | 0 |
| CONDENSER, WORKING WEIGHT, EACH | | 14 | 0 |
| LIQUID RECEIVER, MAX. WORKING WEIGHT | | 17 | 1 |
| DELIVERY OIL SEPARATOR, EACH | | 5 | 0 |
| SUCTION VESSEL, EACH | | 3 | 0 |
| DRIER | | | |

The remaining requirements of the Rules for Refrigerated Cargo Installations to be complied with so far as they are applicable.

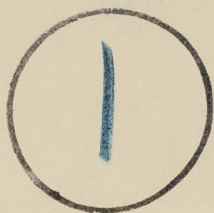
REFRIG. DRAWING
OFFICE
J. & E. HALL LTD.
J. & E. HALL LTD.

S.S. "HILARY"

ARRANGEMENT OF REFRIGERATING
MACHINERY

LIV Rpt No. 148760

RECORDS DEPT.,
LONDON.



© 2020

Lloyd's Register
Foundation

004642-004645-0159