

PLAN OF STERNFRAME AND RUDDER.

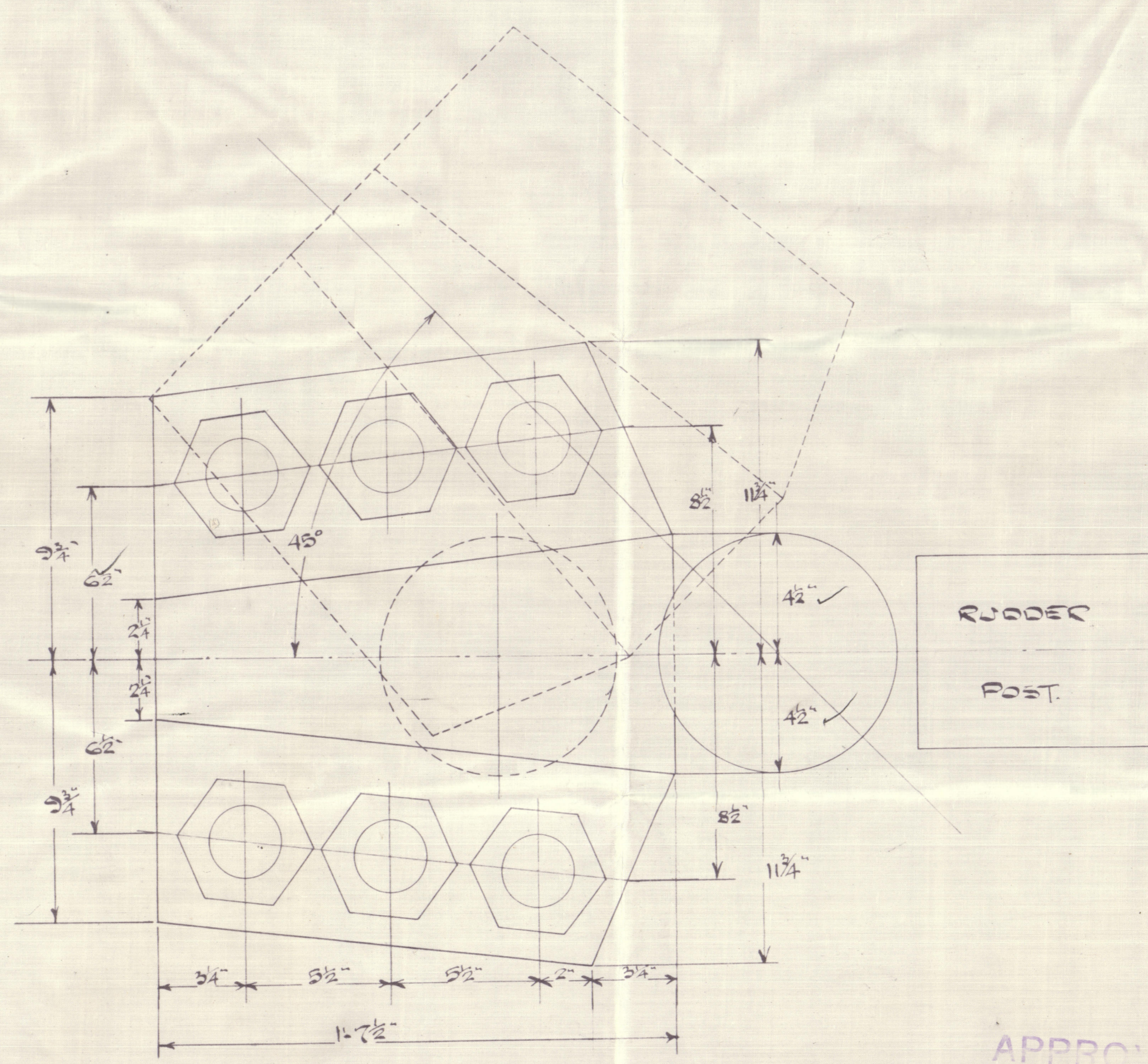
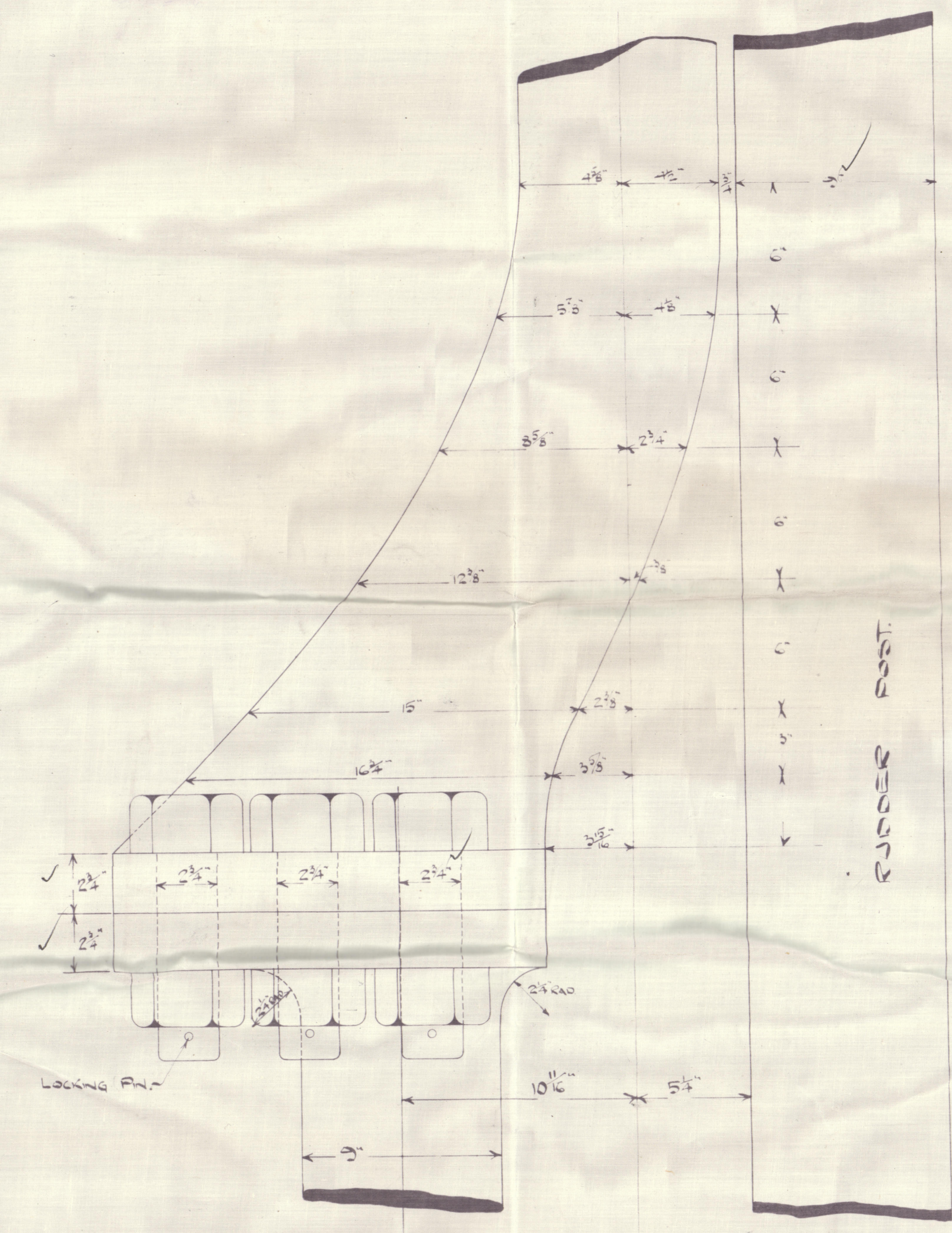
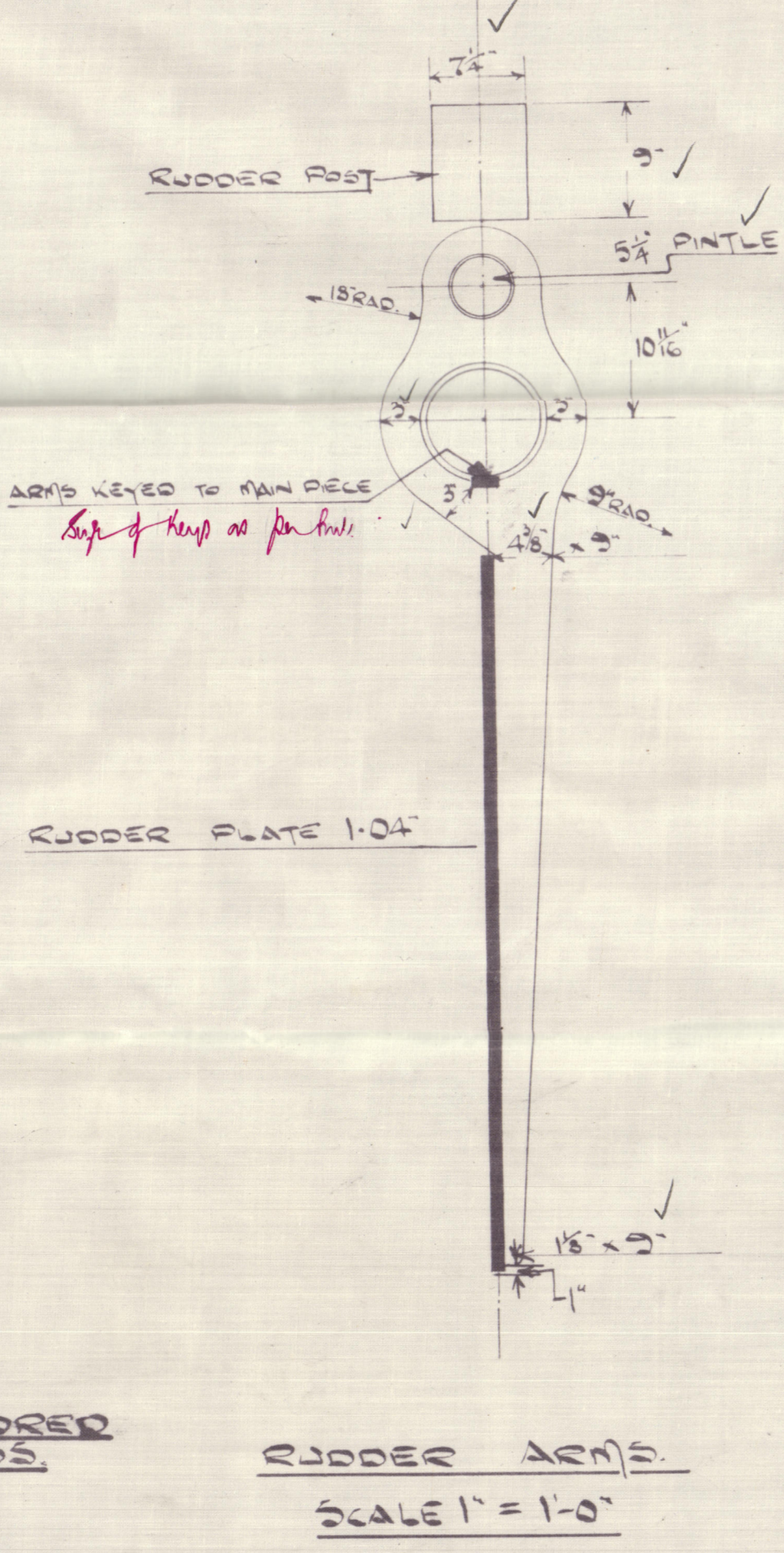
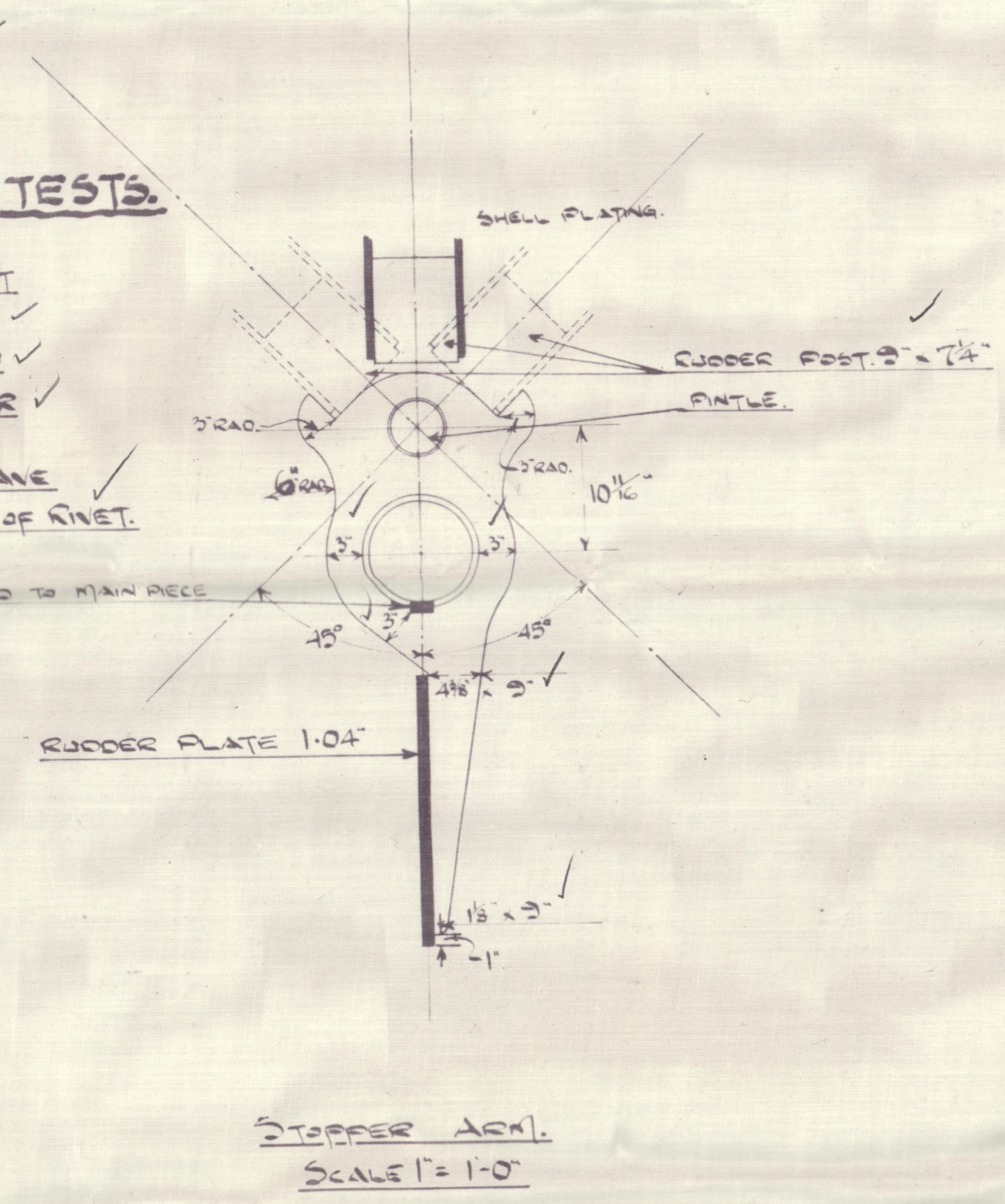
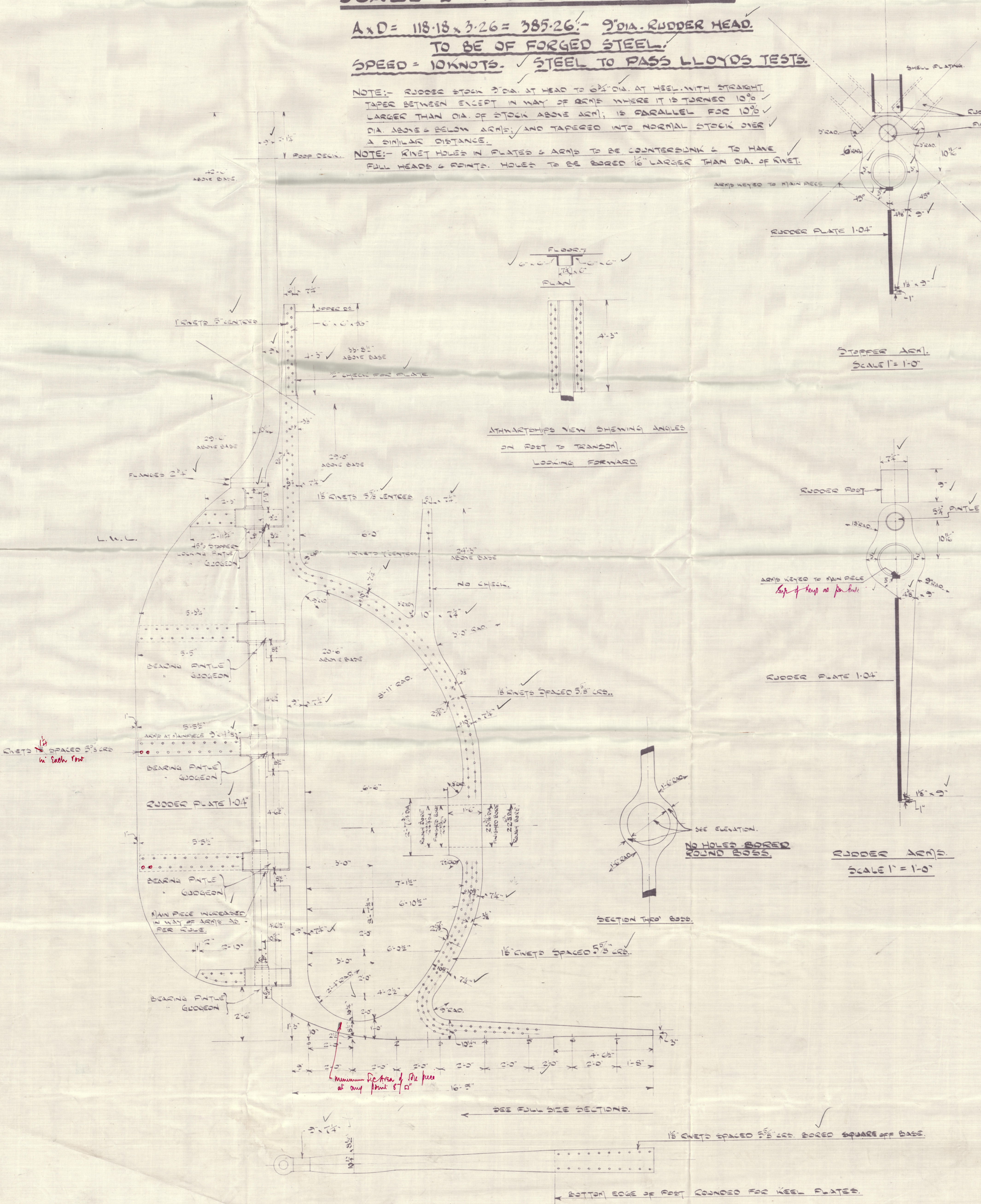
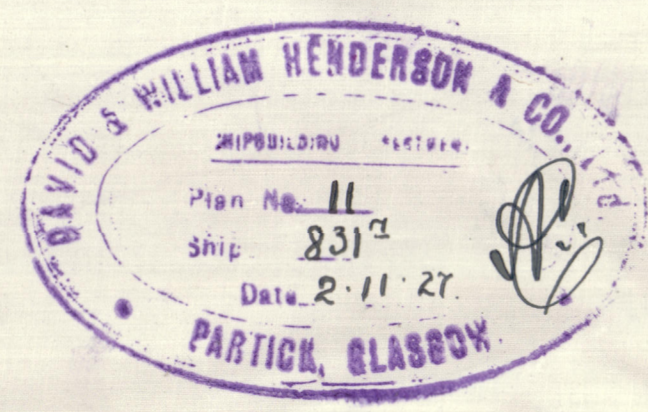
S.S. N<sup>o</sup> 831 M.

SCALE 1/2" = 1'-0" OR AS MARKED.

A<sub>1</sub>D = 118.18 x 3.26 = 385.26' - 3" DIA. RUDDER HEAD.

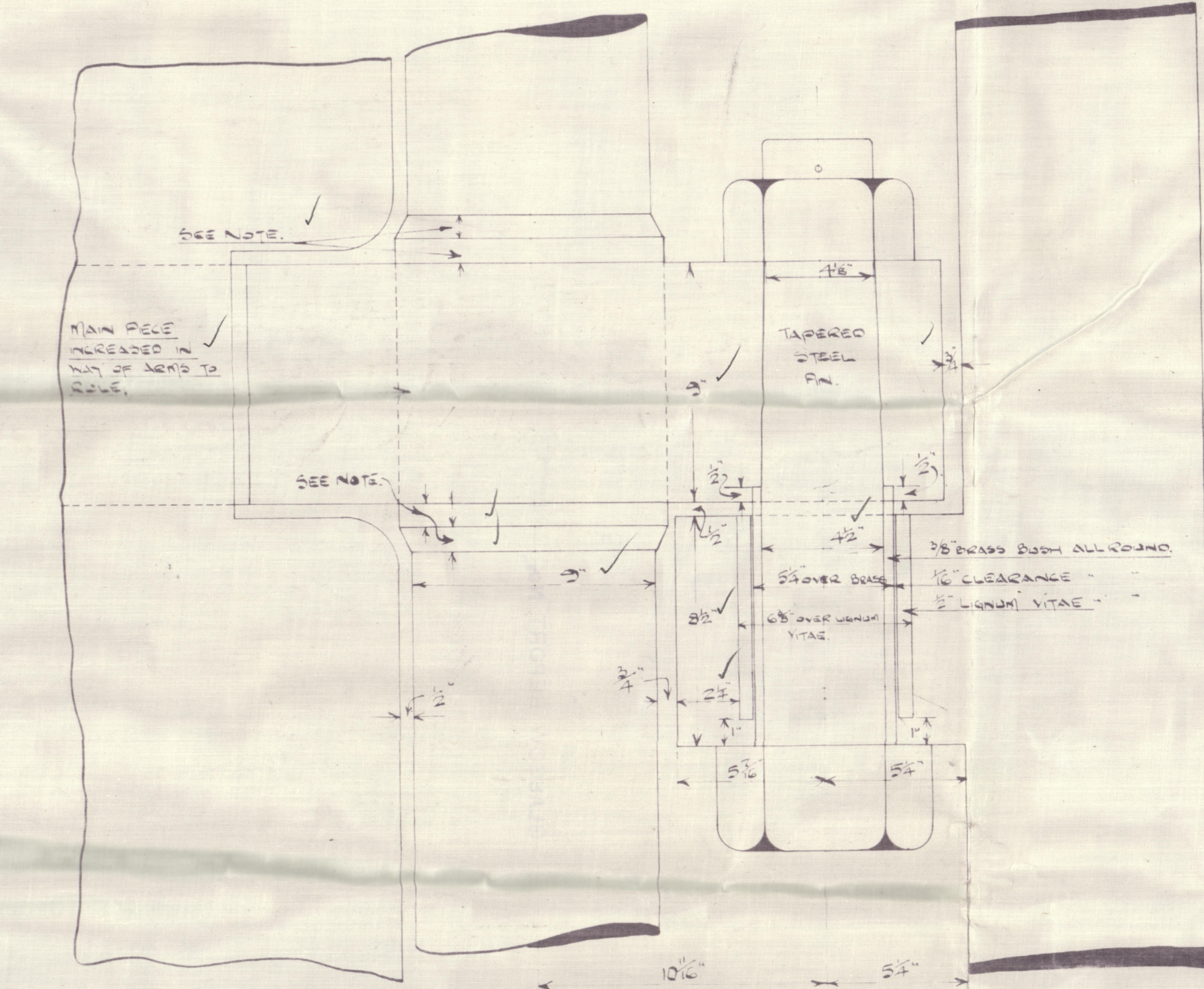
TO BE OF FORGED STEEL.  
SPEED = 10 KNOTS. ✓ STEEL TO PASS LLOYD'S TESTS.

NOTE: RUDDER STEEL 3" DIA. AT HEAD TO 6 1/2" DIA. AT BASE WITH STRAIGHT TAPER BETWEEN EXCEPT IN WAY OF ARMS WHERE IT IS TAPERED 10% LARGER THAN DIA. OF STEEL ABOVE ARM, IS PARALLEL FOR 10% DIA. ABOVE & BELOW ARMS AND TAPERED INTO NORMAL STEEL DIA. A SIMILAR DISTANCE.  
NOTE: KINET HOLES IN PLATES & ARMS TO BE COUNTERSUNK & TO HAVE ROLL HEADS & POINTS. HOLES TO BE BORED 1/8" LARGER THAN DIA. OF KINET.

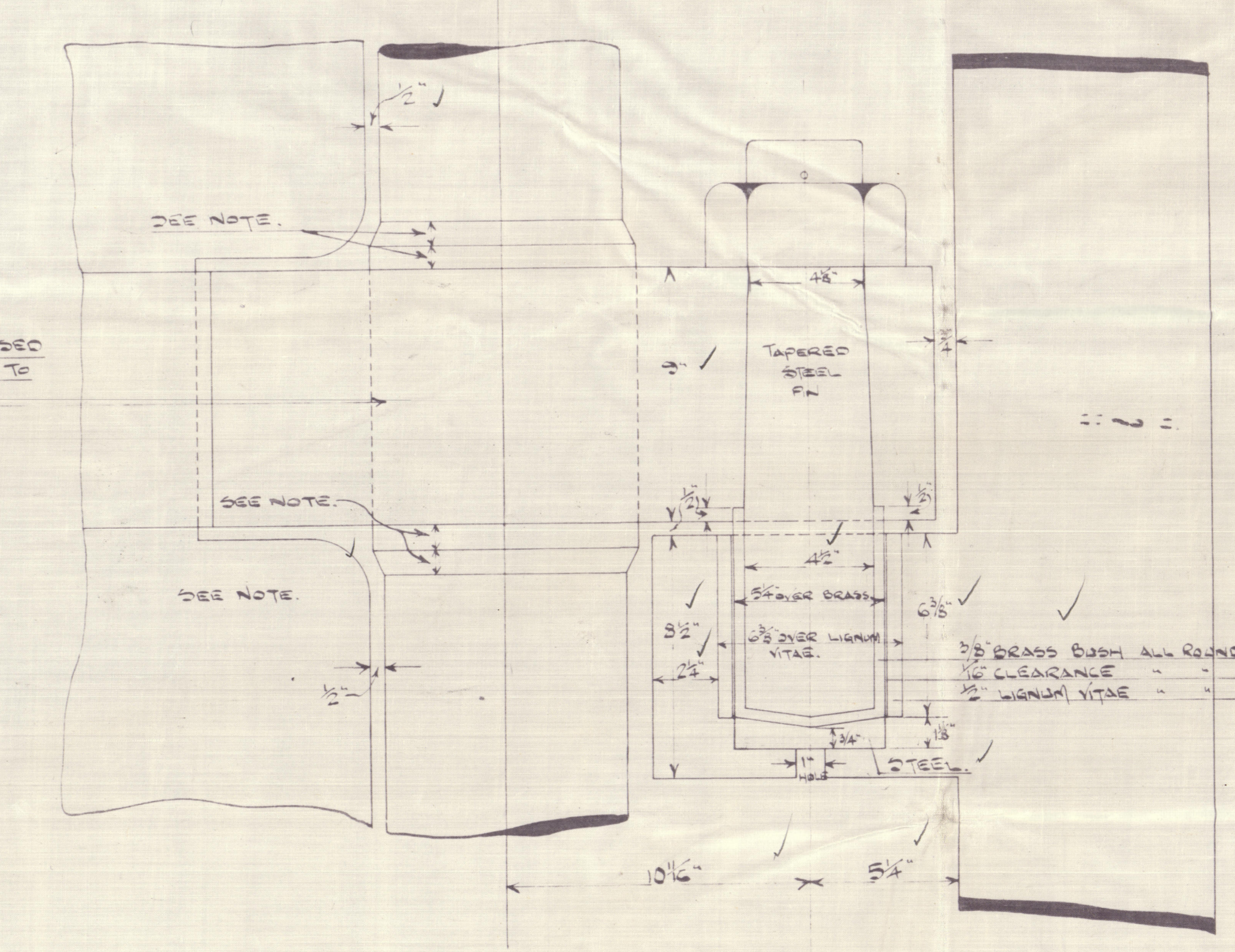


PLAN OF COUPLING.  
SCALE 3" = 1'-0"

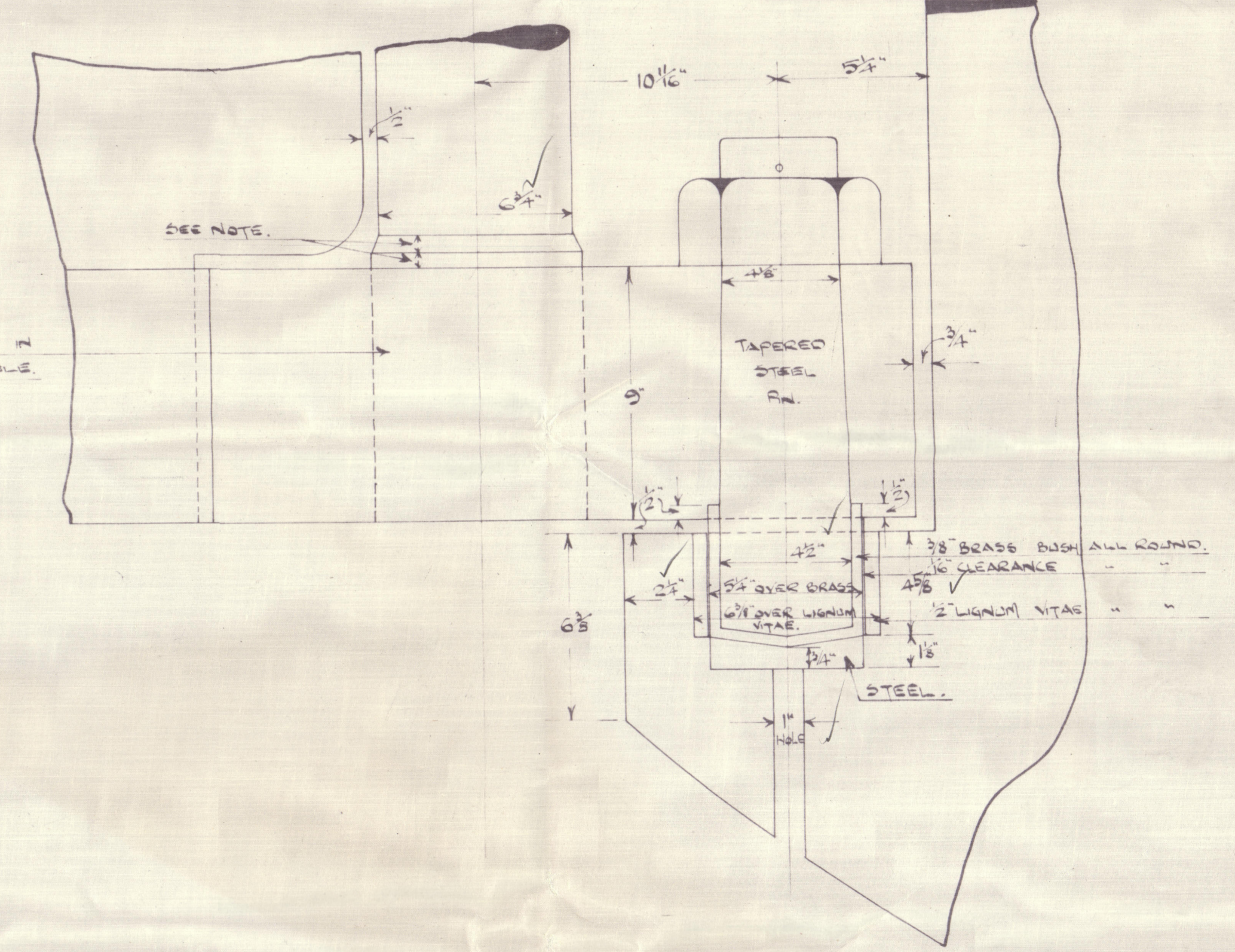
APPROVED BY  
LLOYD'S REGISTER OF SHIPPING  
DATE 8.11.27



DETAIL OF LOWER PART OF RUDDER HEAD & PLATE (OFF).  
SCALE 3" = 1'-0"



DETAIL OF UPPER PART OF RUDDER HEAD & PLATE (OFF).  
SCALE 3" = 1'-0"



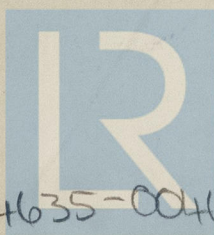
DETAIL OF LOWER PART OF RUDDER HEAD & PLATE (OFF).  
SCALE 3" = 1'-0"

004635-004644-0228

N<sup>o</sup> 831. M  
Stern frame & Rudder  
J. W. Anderson

GLASGOW REPORT No. 48411

"Skema"



© 2020

Lloyd's Register  
Foundation

004635-004641-0228