

M.O. "PETER JON"
(Ex - JULIET) 11th sept No. 21982.

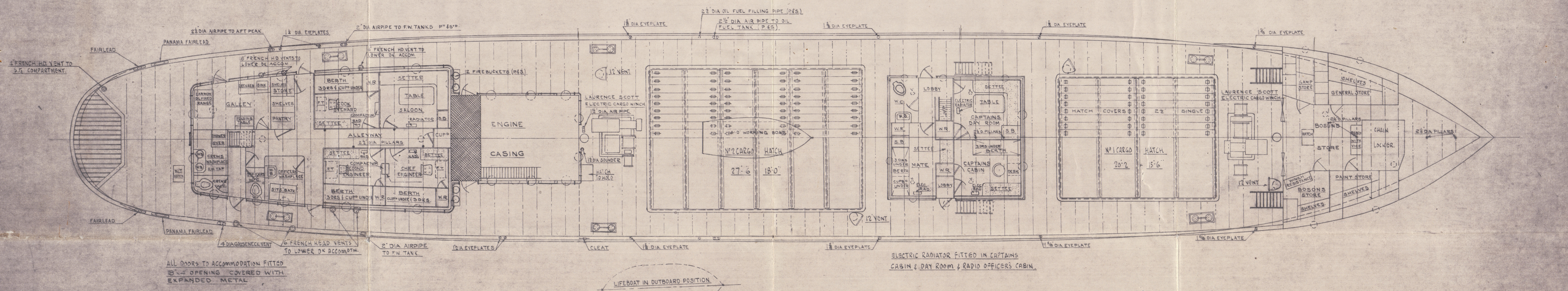
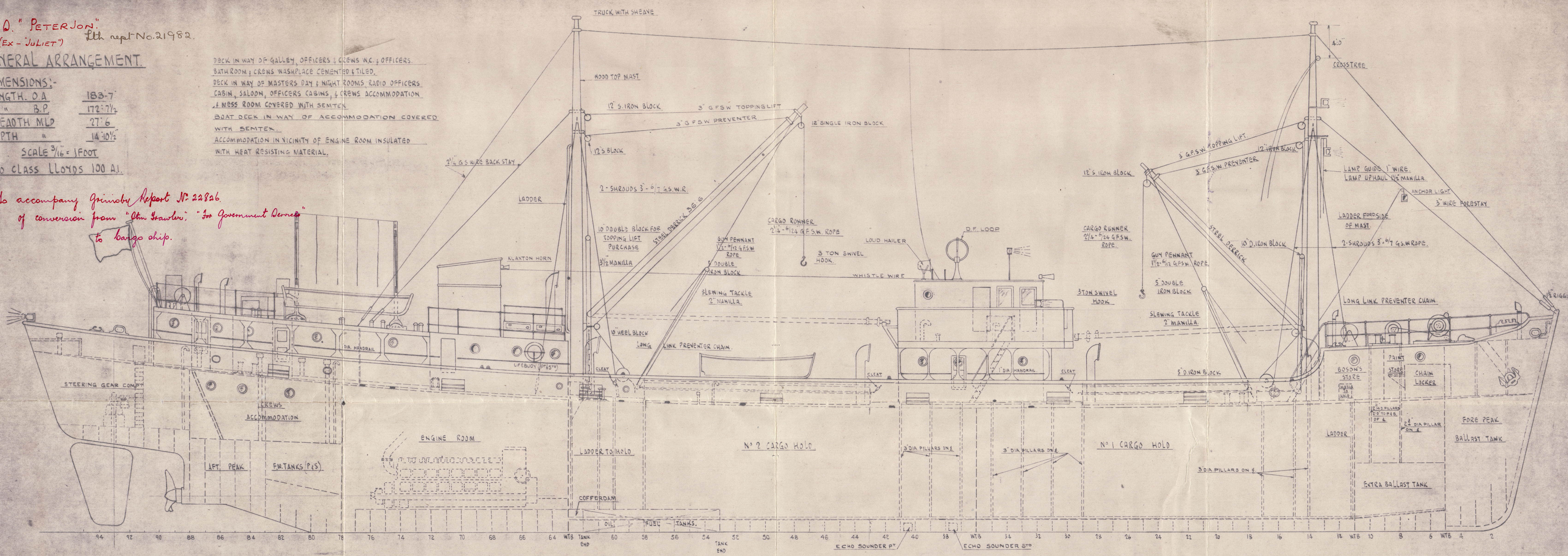
GENERAL ARRANGEMENT.

DIMENSIONS:-
LENGTH O.A. 183'-7"
" B.P. 172'-7 1/2"
BREADTH MLD 27'-6"
DEPTH " 14'-10 1/2"

SCALE 3/16" = 1 FOOT
TO CLASS LLOYDS 100 A1.

to accompany Grimsby Report No. 22826.
of conversion from "Olin Stawler", "for Government Service"
to cargo ship.

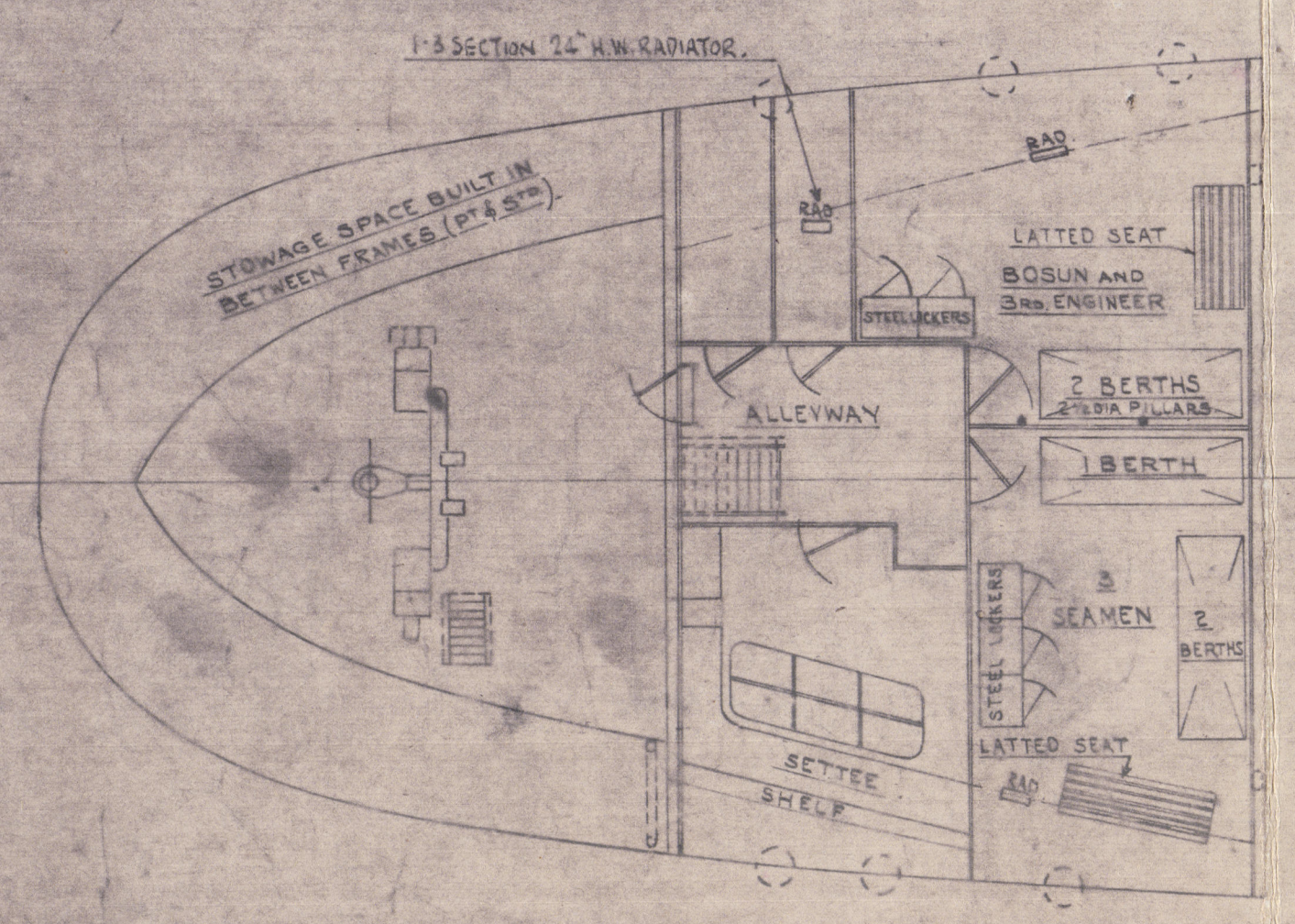
DECK IN WAY OF GALLEY, OFFICERS & CREWS W.C. & OFFICERS.
BATH ROOM; CREWS WASH PLACE CEMENTED & TILED.
DECK IN WAY OF MASTERS DAY & NIGHT ROOMS RADIO OFFICERS.
CABIN, SALOON, OFFICERS CABINS, & CREWS ACCOMMODATION.
MESS ROOM COVERED WITH SEMTEX.
BOAT DECK IN WAY OF ACCOMMODATION COVERED
WITH SEMTEX.
ACCOMMODATION IN VICINITY OF ENGINE ROOM INSULATED
WITH HEAT RESISTING MATERIAL.



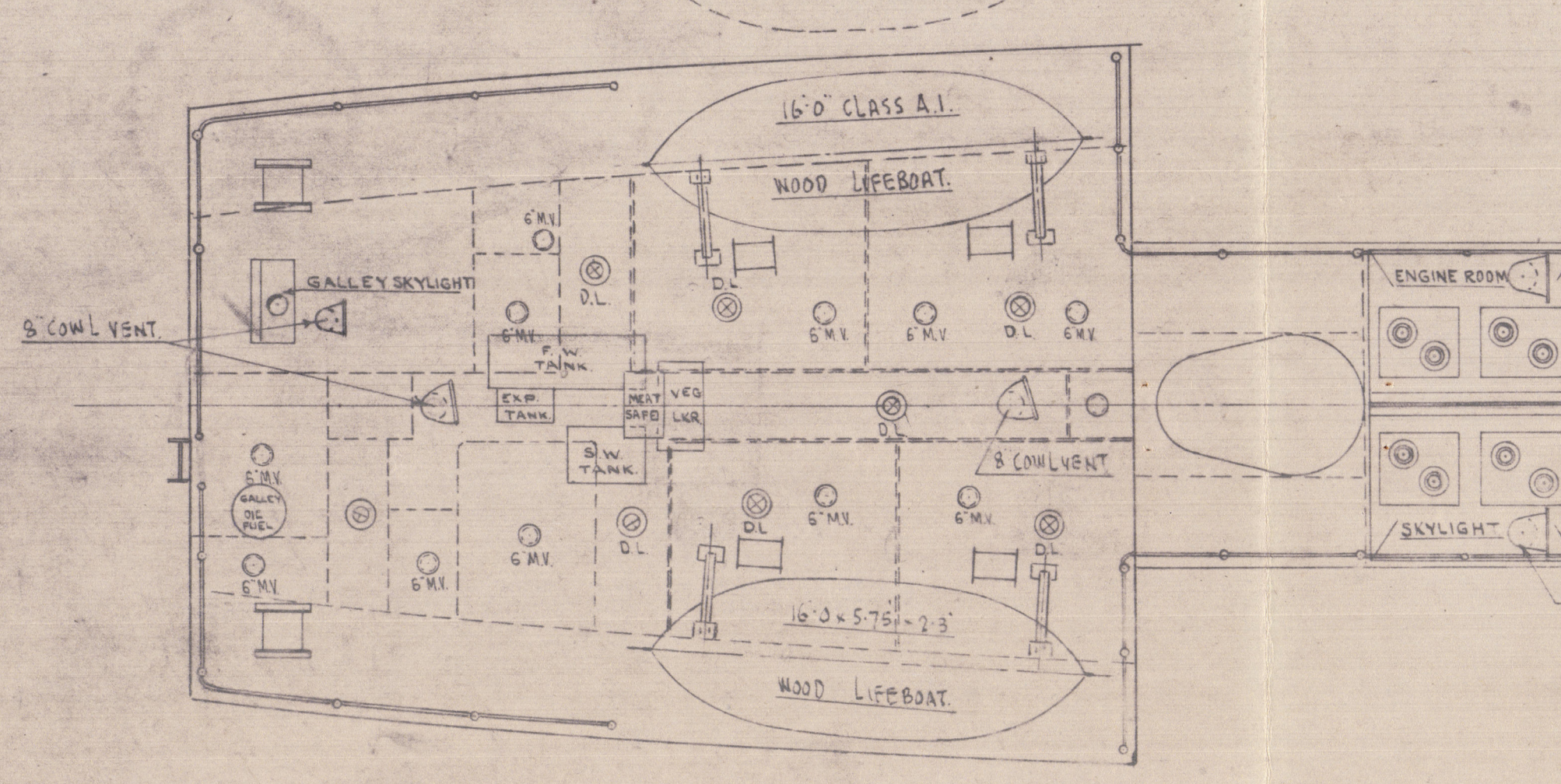
ALL DOORS TO ACCOMMODATION FITTED
WITH OPENING COVERED WITH
EXPANDED METAL.

ELECTRIC RADIATOR FITTED IN CERTAINS
CABIN & DAY ROOM & RADIO OFFICERS CABIN.

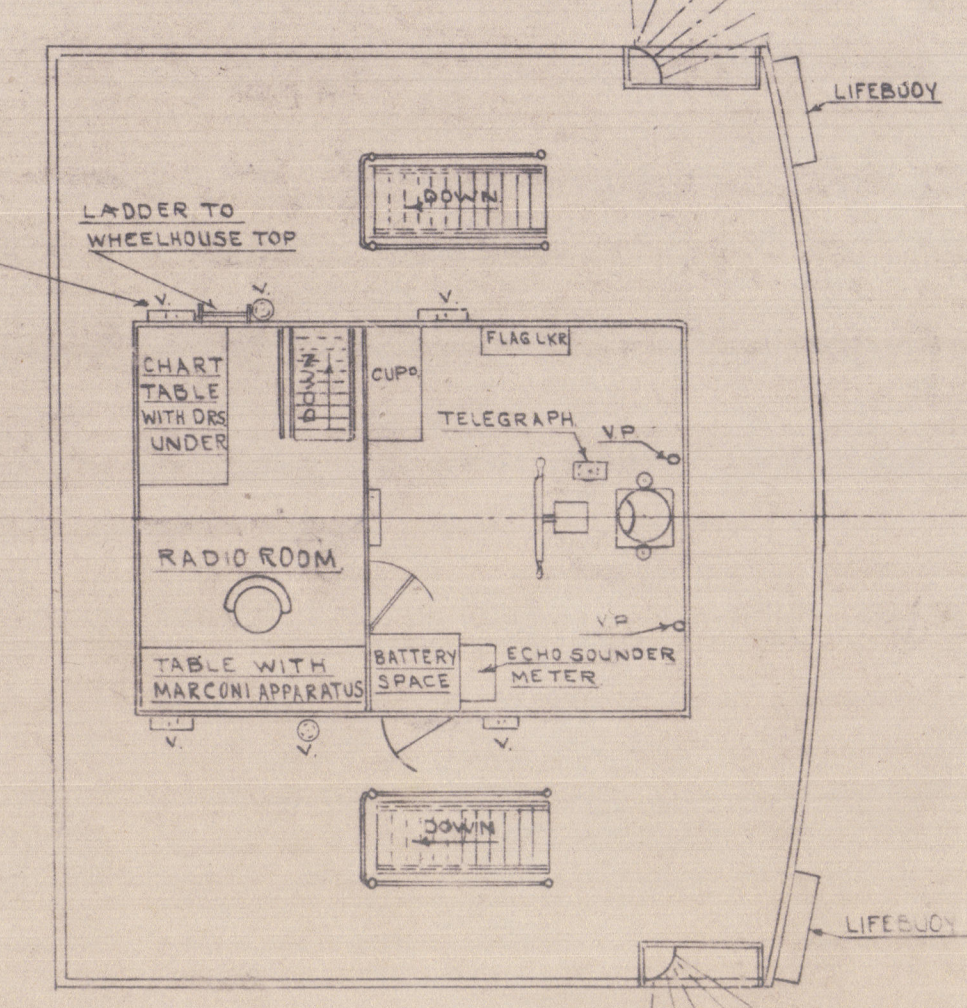
LIFEBOAT IN OUTBOARD POSITION



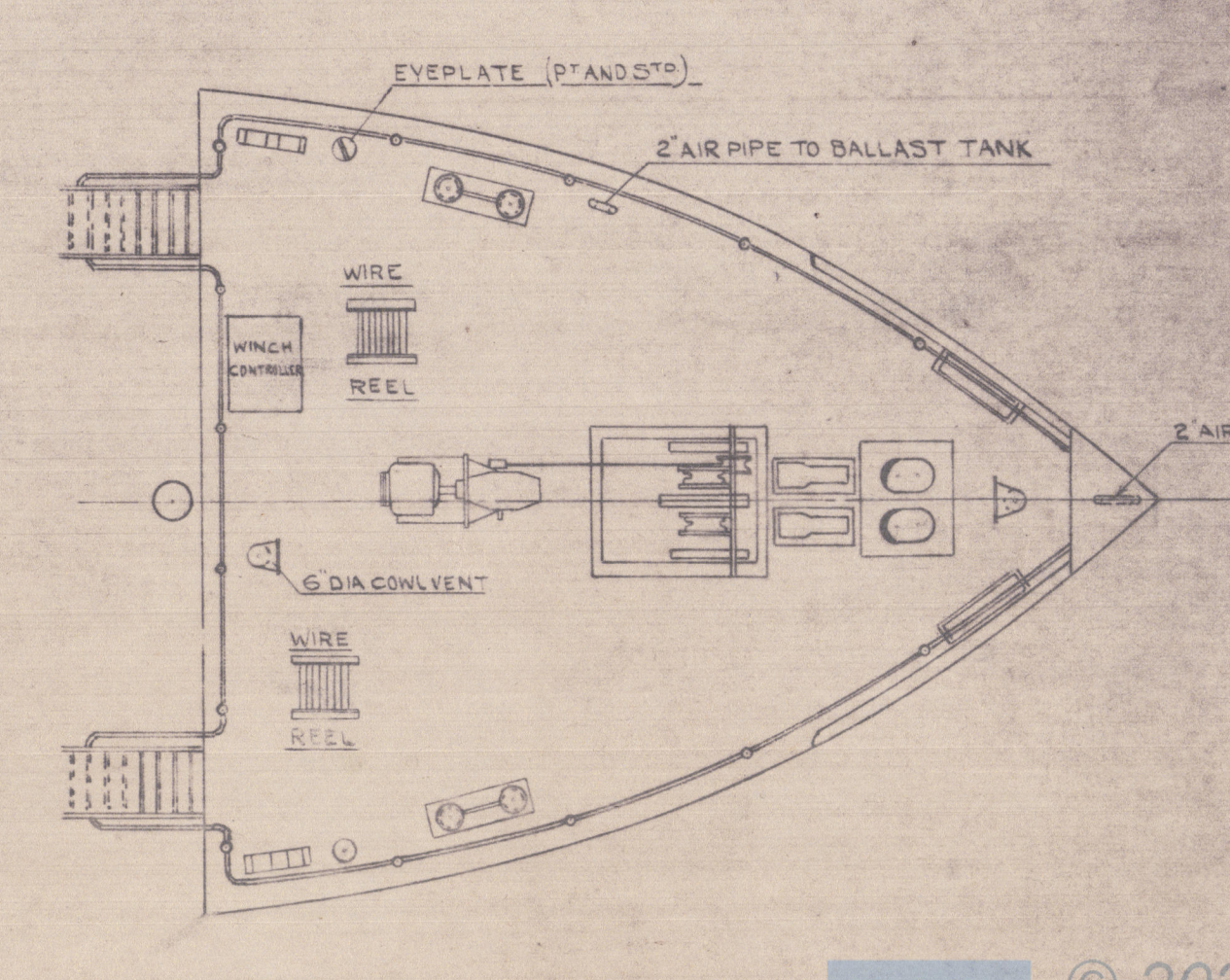
LOWER DECK ACCOMMODATION.



BOAT DECK, ENGINE CASING TOP



BRIDGE DECK & WHEELHOUSE



FORECASTLE DECK

J.S. DOUGLAS GRIMSBY LTD
SHIPBUILDERS & ENGINEERS
GRIMSBY