

N<sup>o</sup> 299.

# MIDSHIP SECTION

SCALE 1/2" = 1 FOOT.

## OIL TANK MOTOR BARGE.

140'-0" x 24'-0" x 13'-0"

CLASS A.I. FOR RIVER & HARBOUR PURPOSES ONLY.

CARRYING OIL FUEL IN BULK F.P. ABOVE 150° F.

### EQUIPMENT

NUM. CAL.		
L x (B + D)	5180.00	
DECK ERECTIONS	3.75 x 25	46.87
		5226.87
2 BOWERS EX STOCK	5 1/2 CWT. EACH	
1 STREAM	2 1/4	
80 FATHOMS	14" STUD CHAIN CABLE	
45 "	19" SHORT LINK CHAIN OR	
	2 1/4" STEEL WIRE.	
75 "	7" HEMP OR 2 1/2" STEEL WIRE TOWLINE	
5" HAWSERS AND WARPS.	EACH 90 FATHOMS	

$$L \times (B + D) = 5180$$

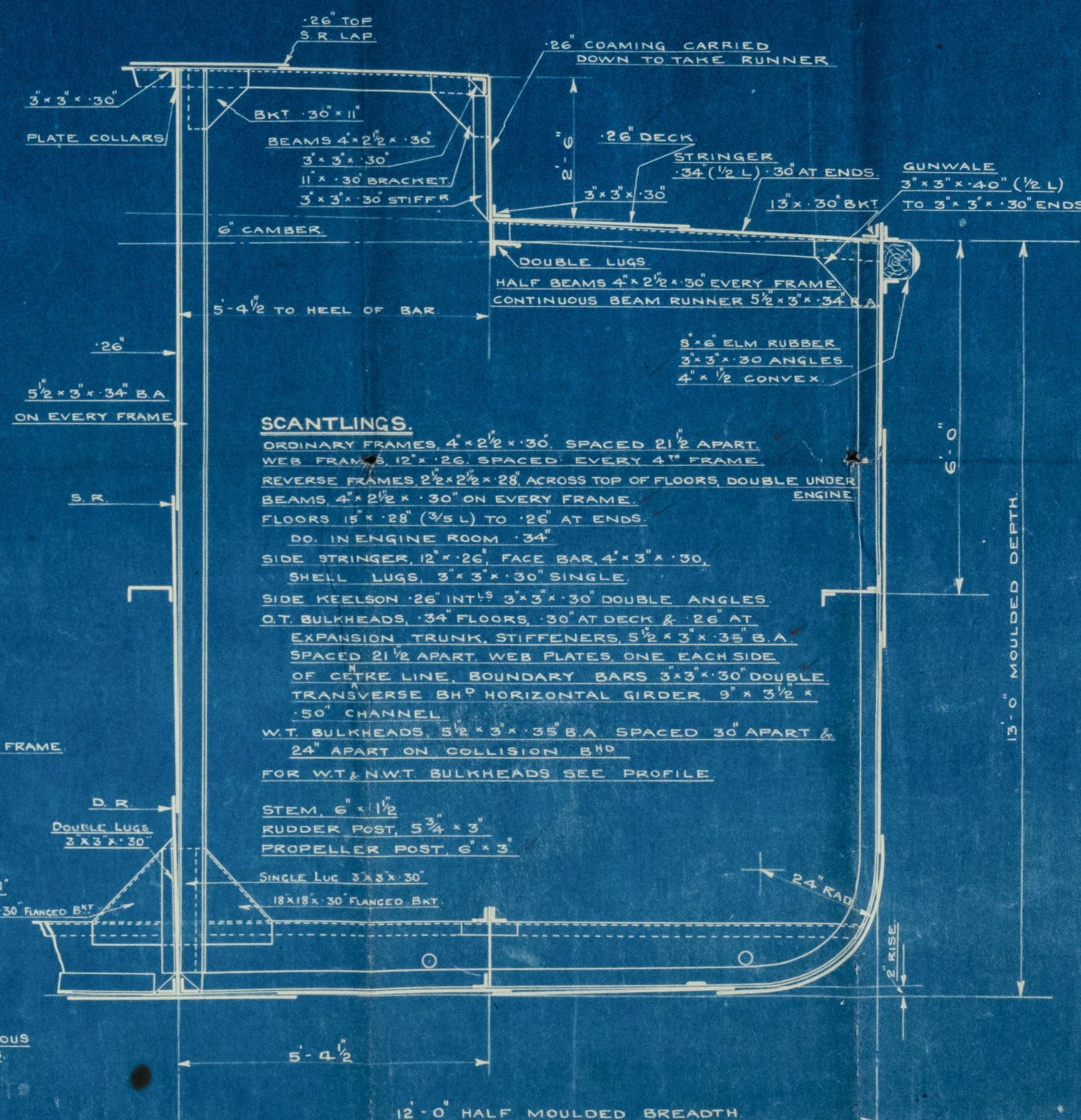
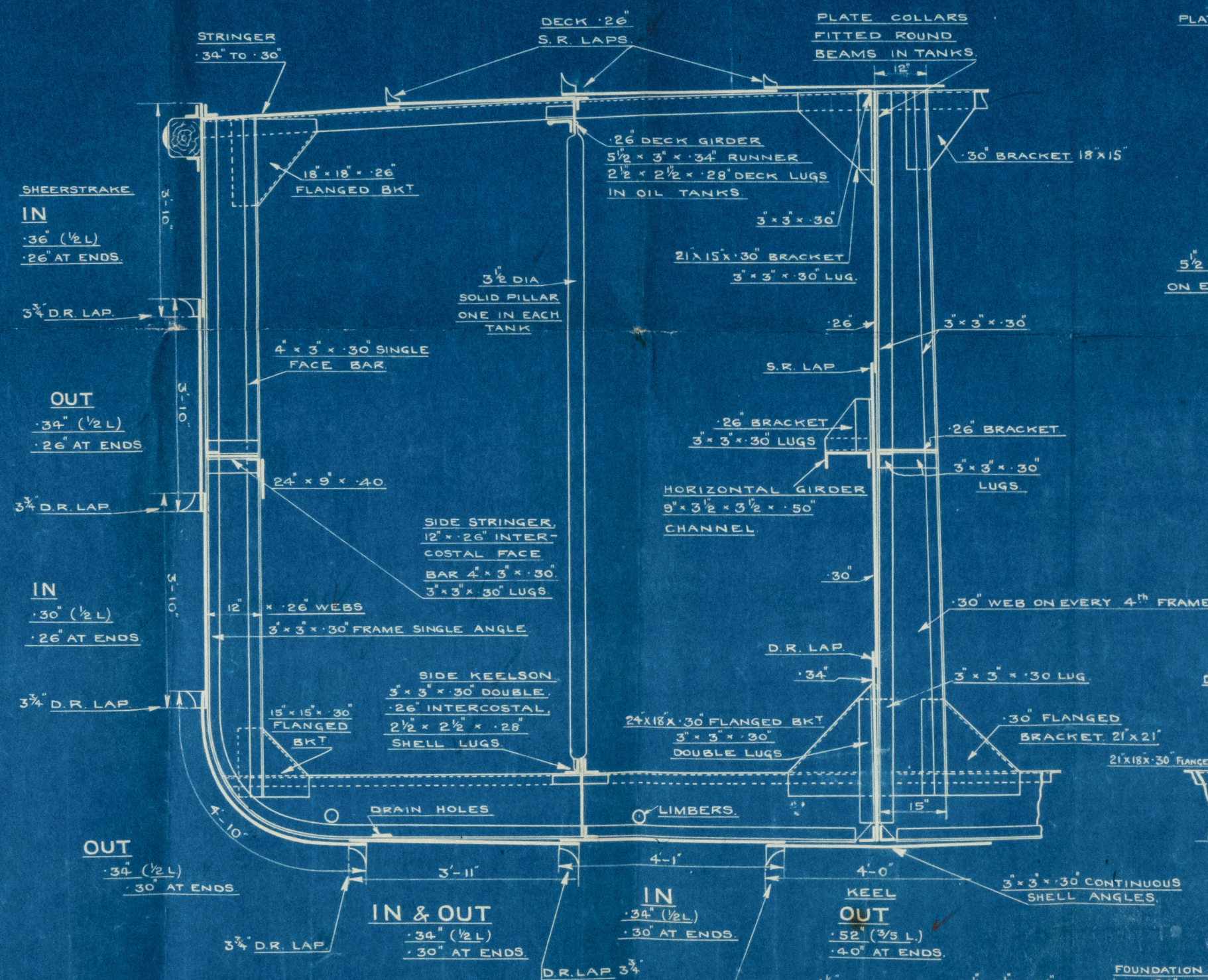
$$B + D = 37$$

$$L/D = 10.77$$

$$d = 11'-9"$$

### RIVETTING

RIVETTING 5/8" DIAM. THROUGHOUT EXCEPT KEEL WHERE RIVETS ARE 3/4"	
BUTTS OF SHELL PLATING OVERLAPPED AND DOUBLE RIVETTED.	
SEAMS " " " " " "	
BUTTS OF DECK PLATING " " " "	
SEAMS " " " " " SINGLE	
BUTTS OF O.T. BULKHEADS " " " " DOUBLE	
SEAMS " " " " " "	
SEAM OF EXPANSION TRUNK " " " " SINGLE	



### SCANTLINGS.

ORDINARY FRAMES 4\"/>

STEM 6\"/>

SINGLE LUG 3\"/>

18\"/>



CAMPER & NICHOLSON LTD.  
GOSPORT.  
DRAWING OFFICE  
No. 1239  
Date 11.12.20

21.12.20.

004603-004611-0181



14  
messrs Camper Nicholson  
Spart.

mid - Section for Jan N° 299.

Oil Barge for River Purposes.

M.V. "PHIRO"

Sou Rep N° 11075.

---



© 2021

Lloyd's Register  
Foundation

004603 - 004611 - 0181