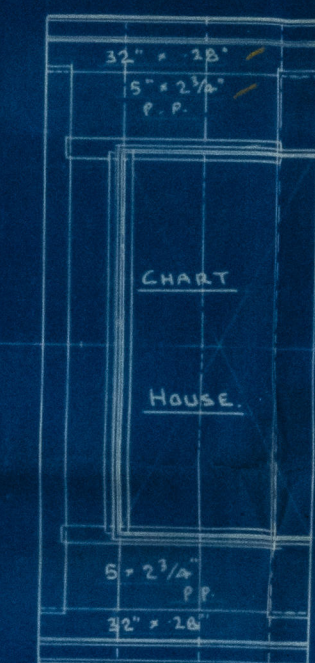


YARD N° 290. PROFILE & DECKS.

SCALE $\frac{1}{8}$ " = 1 FOOT.

LENGTH B.P. = 205'-0"
BREADTH MLD = 32'-0"
DEPTH MLD TO MAIN DECK 14'-0"
TO LLOYDS CLASS 100 A.I. +.

BRIDGE DECK.
STRINGER PLATE 32" x 28"
TIE PLATES 7" x 28"
STRINGER ANGLE 3" x 3" x 28"
WATERWAY BAR 2 1/2" x 3/4" x 28"
BEAMS 6" x 3" x 36" O.A. ON
ALTERNATE FRAMES
KNEES 16 1/2" x 32" 4-3/4" RNS.



702
290
1-10-29 HJ

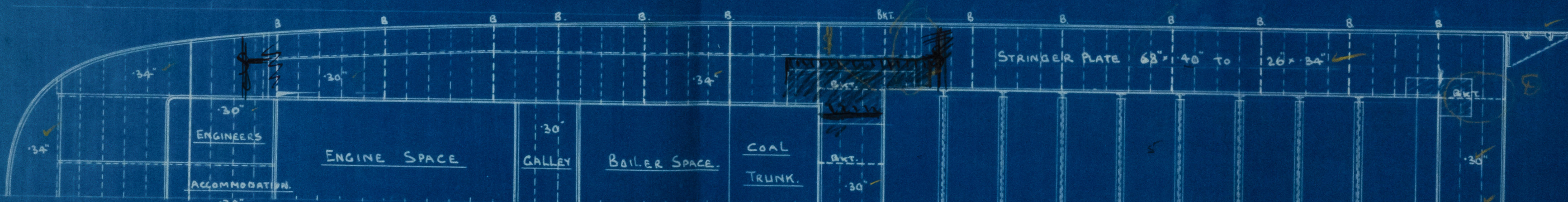
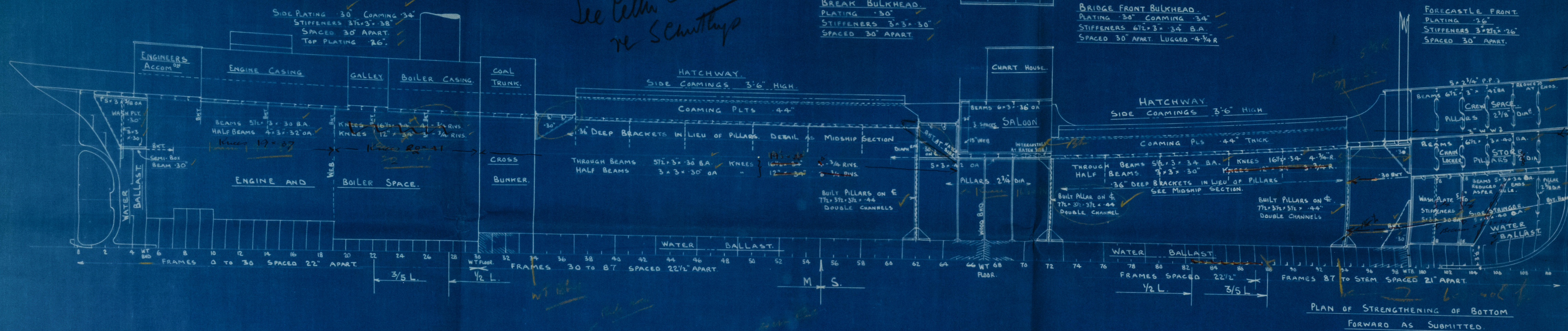
WATERTIGHT BULKHEAD N° 99.
PLATING 13/8" TO 3/8"
STIFFENERS BELOW FLAT 7 1/2" x 3" x 36" BKT TO FLAT
ABOVE FLAT 3" x 3" x 30" NO BKT. SPACED 24" APART.
FRAME ANGLE 3" x 3" x 30"
DECK ANGLE 3" x 3" x 30"

BREAK BULKHEAD
PLATING 3/8"
STIFFENERS 3" x 3" x 30"
SPACED 30" APART.

BRIDGE FRONT BULKHEAD
PLATING 3/8" COAMING 3/4"
STIFFENERS 6 1/2" x 3" x 34" B.A.
SPACED 30" APART. LUGGED 4-1/4" R.

FORECASTLE FRONT
PLATING 3/8"
STIFFENERS 3" x 3" x 26"
SPACED 30" APART.

See Letter 31-10-29
re Schmitts



RAISED QUARTER DECK.

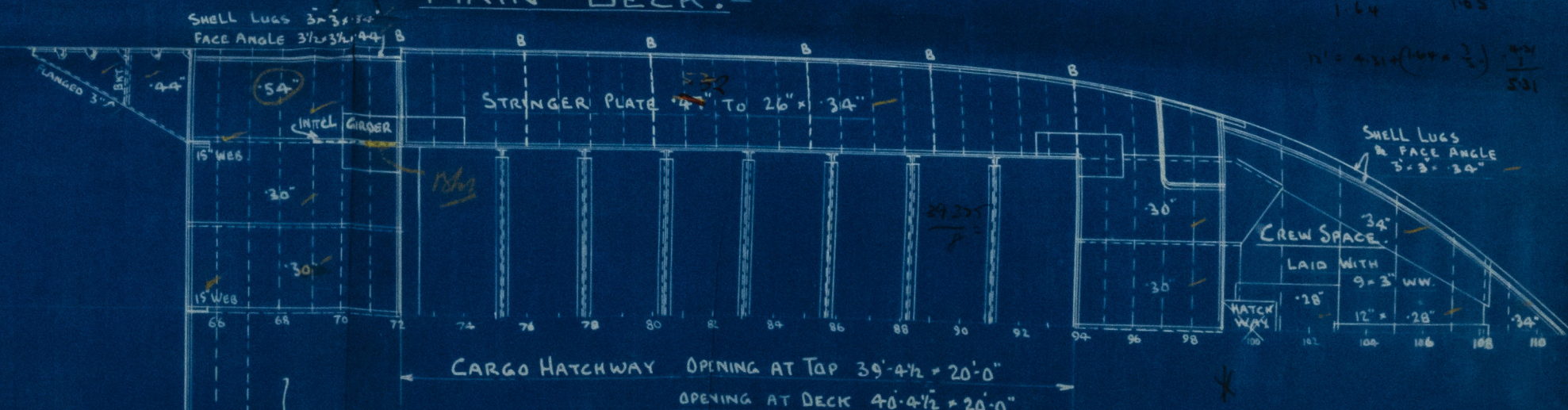
W.T. BULKHEAD N° 5.
PLATING 3/8" TO 26" INCR. TO 70" IN WAY OF STERN TUBE.
STIFFENERS 7" x 3" x 36" B.A. REDUCED AS PER RULE.
SPACED 24" APART BRACKETS AT TOP.
FRAME 3" x 3" x 30" NO
BEAM 3" x 3" x 36"

Non W.T. BULKHEAD N° 30
PLATING 3/8" TO 28"
STIFFENERS 6" x 3" x 34" O.A.
SPACED 36" APART

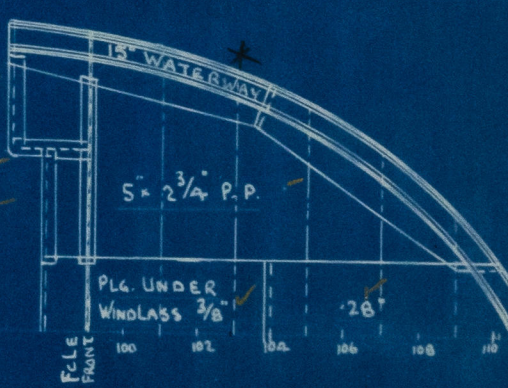
W.T. BULKHEAD N° 34.
PLATING 40" TO 26"
STIFFENERS 7" x 3" x 36" B.A.
SPACED 30" APART BKT. TOP & BTM.
FRAME 3" x 3" x 30" NO
BEAM 3" x 3" x 36"

THE GOOLE SHIPBUILDING & REPAIRING CO. LTD.,
GOOLE.

MAIN DECK.



FORECASTLE DECK.
STRINGER PLT 18" x 28"
TIE PLTS 7" x 28"
STRINGER ANGLE 3" x 3" x 28"
WATERWAY 2 1/2" x 3/4" x 36"



004603-004611-0058

N. 290

Profile & Deck

Goole S.B. & R. Co. Ld.

~~W. 492~~

S.S. "Sanfay"
W/R

PORTELET X



© 2021

Lloyd's Register
Foundation

004603-004611-0058