

Lloyd's Register of Shipping.

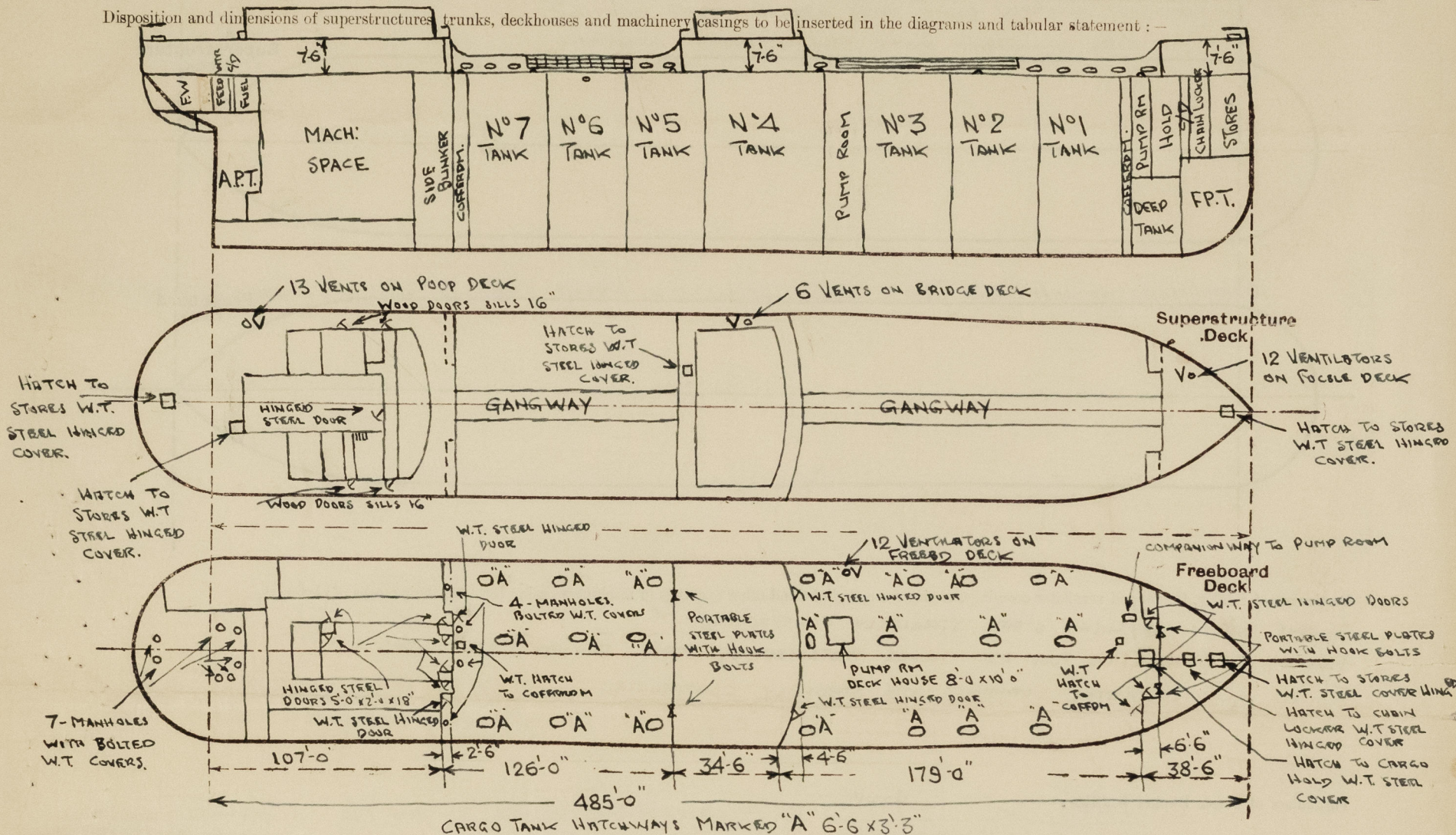
SURVEYS FOR FREEBOARD.

(CONDITIONS OF ASSIGNMENT.)

M.N. PANELLA

Ship's Name **EMPIRE JAGONA** EX HYDRA EX HENNING MAERSKI Port of Survey **HAMBURG (KIEL DISTRICT)**Official Number **TAGANAX 180878**Surveyor's Signature *J. J. J. J.*Nationality and Port of Registry **BRITISH LONDON**Date of Survey **8th - 11th APRIL 1946**

Disposition and dimensions of superstructures, trunks, deckhouses and machinery casings to be inserted in the diagrams and tabular statement:—



Particulars of Superstructures, Trunks, Casings, Deckhouses.

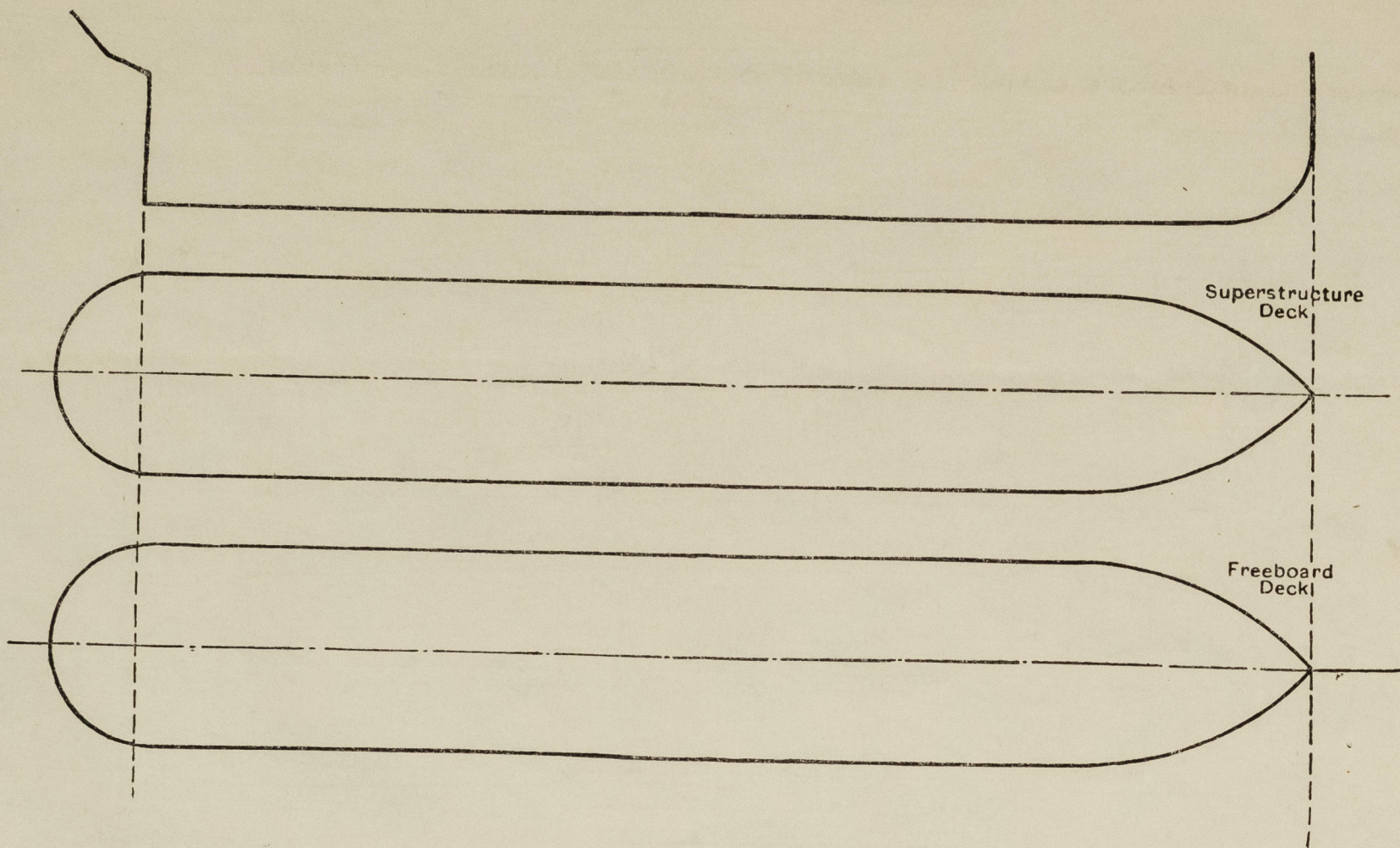
	Coaming	Plating	Stiffeners	Spacing	End Attachments of Stiffeners	Size of Openings	Height of Sills	Height of Casings
Poop Bulkhead	FULL HEIGHT	.45"	P 11" x 3 1/2" x .50"	28"	BRACKETED	5'-0" x 2'-0"	18"	7'-6"
Raised Quarter Deck Bulkhead ...								
Bridge, After Bulkhead	4'-0" x .35"	.35"	L 4 x 3" x .40"	30"	BRACKETED	5'-0" x 3'-4"	18"	7'-6"
Bridge, Forward Bulkhead	4'-0" x .45"	.45"	P 10 x 3 1/2" x .50"	30"	BRACKETED	5'-0" x 2'-4"	18"	7'-6"
Forecastle Bulkhead	FULL HEIGHT	.38"	L 4" x 3" x .38"	30"	WELDED TO DECK	5'-0" x 2'-6"	18"	7'-6"
Trunk, Aft								
Trunk, Forward								
Exposed Machinery Casings on Freeboard or Raised Quarter Decks ...	17" x .38"	.32"	L 3 x 3 x .38"	24"	NONE	5'-0" x 2'-0"	18"	7'-6"
Exposed Machinery Casings on Superstructure Decks	16" x .38"	.32"	L 3 x 3 x .38"	24"	NONE	5'-0" x 2'-0"	8"	7'-6"
Machinery Casings within Superstructures not fitted with Class I Closing Appliances								
Deckhouses on Flush Deck Ships To MIDSHIP PUMP ROOM 8'-0" x 10'-0"	FULL HEIGHT	.40"	L 4 x 2 1/2 x .38"	24"	NONE	5'-0" x 2'-0"	18"	7'-6"

Particulars of Closing Appliances (state if capable of being manipulated from both sides).

Poop Bulkhead	2- W.T. STEEL HINGED DOORS OPERATED FROM BOTH SIDES. ✓
Raised Quarter Deck Bulkhead ...	
Bridge, After Bulkhead	2- PORTABLE STEEL PLATES SECURED BY HOOK BOLTS ✓
Bridge, Forward Bulkhead	2- W.T. STEEL DOORS HINGED OPERATED FROM BOTH SIDES ✓
Forecastle Bulkhead	2- PORTABLE STEEL PLATES SECURED BY HOOK BOLTS - 3- W.T. STEEL HINGED DOORS OPERATED BOTH SIDES ✓
Exposed Machinery Casings on Freeboard or Raised Quarter Decks ...	STEEL HINGED DOORS OPERATED BOTH SIDES
Exposed Machinery Casings on Superstructure Decks	STEEL HINGED DOORS OPERATED BOTH SIDES
Machinery Casings within Superstructures not fitted with Class I Closing Appliances	
Deckhouses on Flush Deck Ships To MIDSHIP PUMP ROOM	W.T. STEEL HINGED DOORS OPERATED BOTH SIDES.

PARTICULARS OF PROTECTION TO OPENINGS, ETC.

The following diagrams should be used to indicate the positions of cargo and coaling hatchways, gangway, cargo and coaling ports, ventilators, companionways, etc., which would affect the seaworthiness of the ship:—



Particulars of fiddley, funnel and ventilator coamings, engine room skylight and other openings in machinery casing tops and their means of closing :

ENGINE ROOM SKYLIGHT STEEL STRONGLY CONSTRUCTED.

FIDDLEY OPENINGS ON POOP DECK HOUSE PROTECTED BY STRONG HINGED STEEL COVERS

FUNNEL AND VENTILATOR CHIMNEYS ARE STRONGLY CONSTRUCTED.

Particulars of Flush Bunker Scuttles:—

NONE

Particulars of Companionways :- ON FREEBOARD DECK TO FORWARD PUMP ROOM STEEL RIVETED TO DECK 1 W.T. DOOR 4'-0" X 2'-0" X 18" SILL OPERATED BOTH SIDES. / ON MIDSHIP PUMP ROOM DECK HOUSE STEEL RIVETED 1 W.T. DOOR 5'-0" X 2'-0" OPERATED BOTH SIDES /

4 MANHOLES ON EXPOSED PORTION OF FREEBOARD DECK TO AFT COFFERDAM AND BUNKERS 14" X 18" CORNING 6" X 38 SUNK FITTED WITH BOLTED W.T. COVERS. /

7 MANHOLES ON FREEBOARD DECK IN POOP SPACE TO TWEEN DECK FRESH WATER AND FUEL TANKS 14" X 12" FITTED WITH BOLTED W.T. COVERS. /

Particulars of Ventilators in exposed positions on freeboard and superstructure decks :—

ON FOCSE DRCK

TO FOCUS SPACE ABOVE FOREPEAK
TANK TOP :- 3-12" DIA 18" CORNING $\frac{3}{8}$ " THK
4- 6" DIA 24" CORNING $\frac{1}{4}$ " THICK
2- 3" DIA X 18" GOOSE NECKS.
3- 4" DIA X 26" CORNING X $\frac{1}{4}$ " THICK

- 2 TO CARGO HOLD 12' DIA X 10'-0" HIGH X 1/2" BRACKETED.
- 1 TO FORWARD PUMP ROOM 12' DIA X 2'-0" CORNICE 1/2" THICK.
- 1 TO FORWARD PUMP ROOM FITTED ON TOP OF COMPANIONWAY 12' DIA X 3'-6" CORNICE X 1/2" THICK.
- 2 TO FORWARD COFFERDAM 4' DIA X 7'-0" CORNICE X 3/8" THK.
- 2 TO MIDSHIP PUMP ROOM 12' DIA X 20'-0" HIGH X 3/8" THK STAYED.
- 2 TO AFT COFFERDAM 4' DIA X 4'-0" CORNICE X 3/8" THK.
- 2 TO AFT SIDE BUNKERS 6' DIA X 2'-0" CORNICE X 3/8" THK.

ON BRIDGE DECK

To Accommodate
4 - 6" DIA x 16" CORNING 5/16" Thick
2 - 9" DIA x 2'-0" CORNING 3/8" Thick

ON POOP DECK

TO POOP SPACES.
11- 6" DIA 2' 0" CORNING 3/8" TUB

2-12" DIA 2'-0 CORNING 1/2" THICK

VENT. COAMINGS OVER 3'0" IN
HEIGHT SPECIALLY SUPPORTED.

WOOD PLUGS AND CANVAS COVERS OR HINGED STEEL COVERS ^{W.T.} ARE PROVIDED FOR CLOSING OPENINGS

Particulars of Air Pipes in exposed positions on freeboard, raised quarter, or superstructure decks:—

ON FORECASTLE DECK

TO F.P. TANK 1- 4' DIA X 18" HIGH
TO COFFERDAM 1- 1 1/2' DIA X 18" HIGH
TO DEED TANK 2- 6' DIA X 18" HIGH

ON POOP DECK

TO LUB: OIL D.B. TANKS 4 - 2" DIA X 3'-0" HIGH
TO ENG: ROOM D.B. COFFERDAM 2 - 2" DIA X 3'-0" HIGH
TO OIL FUEL D.B. TANKS. 2 - 4 1/2" DIA X 3'-0" HIGH
TO D.B. TANK FRESHWATER. 2 - 2 1/2" DIA X 3'-0" HIGH
TO TWELVE DK OIL FUEL TANKS 2 - 3" DIA X 3'-0" HIGH
TO TWELVE DK COFFERDAM 2 - 1 1/2" DIA X 3'-0" HIGH
TO TWELVE DK F.W. TANKS 2 - 2 1/2" DIA X 3'-0" HIGH
TO DRY TANK 1 - 2 1/2" DIA X 3'-0" HIGH
TO F.W. TANKS AFT. 2 - 2 1/2" DIA X 3'-0" HIGH
TO. AFT PEAK TANK 1 - 2 1/2" DIA X 3'-0" HIGH

HINGED STEEL W.T. COVERS ARE PROVIDED FOR CLOSING OPENINGS ^{TO AFT PEAK TANK}

Particulars of Gangway Cargo and Coaling Ports :—

NONE

Empire Taganax.

Particulars of Scuppers and Sanitary Discharge Pipes :—

7 P.S. 2 T.S. OPEN SCUPPERS THROUGH GUNWHALE BAR IN WELLS. 5" X 4"
1 P.S. 2 I.S. OPEN SCUPPERS DISCHARGING 12" BELOW DECK THROUGH PIPE 3" DIA.

SCUPPERS FROM POOP SPACE W.C'S AND WASHBASINS DRAIN OVERBOARD BELOW FREEBOARD DECK ARE FITTED WITH STORM VALVES ✓

SCUPPERS FROM BRIDGE DECK HOUSE WC³ AND WASH BASINS DRAIN
OVERBOARD THROUGH PIPES ABOVE FREEBOARD DECK ✓

Particulars of Side Scuttles :—

SIDE SCUTTLES FITTED IN SUPERSTRUCTURES FITTED WITH TANGLED DEAD LIGHTS.

Vertical distance of Sill of lowest Side Scuttle above top of keel

Particulars of Guard Rails :—
ON FREEBOARD DECK

AFT END OF BRIDGE AND FOCSE.

Particulars of Gangways, Lifelines, etc. :—

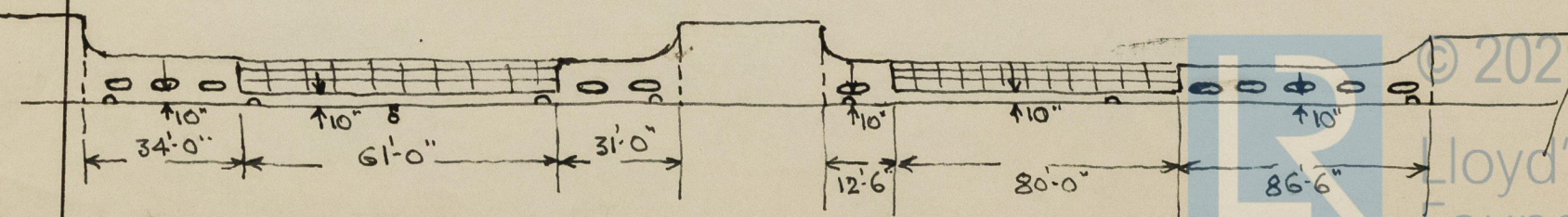
Particulars of Freeing Arrangements.

	Length of Bulwark	Height of Bulwark	Size of Freeing Ports	Number each side	Area each side	Rule area each side
After Well	65'-0"	3'-9"	48" x 10"	5	16.70'	13.00'
Forward Well	99'-0"	3'-9"	48" x 10"	6	20.040'	19.80'

State position of each freeing port { After Well :—
(F. and A. position and height above deck edge) { Forward Well :— } SEE SKETCH HEIGHT OF FREEING PORTS ABOVE DECK 10"

State whether the freeing ports are fitted with shutters, bars, or rails, and give particulars of such:— NONE FITTED

Additional area where sheer is less than standard.



PARTICULARS OF PROTECTION TO OPENINGS, ETC.

HATCHWAYS ON FREEBOARD AND SUPERSTRUCTURE DECKS.											BRIDGE
← FREEBOARD DECK →											POOP DECK
← DECK →											POOP DECK
Description of Hatchway	TO CENTRE AND WING CARGO TANKS	CARGO HOLD	TO CHAIN LOCKER	TO FORE PEAK STORE	TO FORWARD COFFERDAM	TO AFT COFFERDAM	TO FORE STORE	TO POOP STORE	TO POOP STORE	TO POOP STORE	TO BRIDGE STORES
Dimensions of Hatchway	6'-6" x 3'-3"	9'-0" x 10'-6"	3'-0" x 3'-6"	3'-0" x 3'-0"	2'-0" x 2'-0"	2'-0" x 2'-0"	2'-6" x 2'-6"	3'-6" x 4'-0"	2'-0" x 3'-0"	2'-4" x 2'-0"	
COAMINGS	Height above Deck ... 3'-0"	3'-0"	9"	4"	19"	19"	21"	30"	10"	—	
	Thickness48" ✓	.48" ✓	.38"	.38"	.38"	.38"	.40"	.40"	.38"	—	
	Sides ...	7" x 3" BULB	—	—	—	—	—	—	—	—	
	Stiffeners ...	2-7 x 3" BULB	—	—	—	—	—	—	—	—	
	Brackets, Stays ...	—	—	—	—	—	—	—	—	—	
HATCH BEAMS	Number ...	NONE									
	Spacing ...	NONE									
	Scantling and Sketch ...	NONE									
	Bearing Surface ...	NONE									
FORE AND AFTERS	Number ...	NONE									
	Spacing ...	NONE									
	Unsupported Lengths ...	NONE									
	Scantling* and Sketch ...	NONE									
	Bearing Surface ...	NONE									
HATCH COVERS	Material ...	STEEL ✓	STEEL ✓	STEEL ✓	STEEL ✓	STEEL ✓	STEEL ✓	STEEL ✓	STEEL ✓	STEEL ✓	
	Thickness48" ✓	.48"	.38"	.38"	.38"	.38"	.40"	.40"	.38"	
	How fitted ...	W.T. HINGED COVERS									
	Bearing Surface ...	SEE ENDORSEMENT JOINTED - WATER TIGHT									
Spacing of Cleats	NONE										
Number of Tarpaulins	NONE										
*Are wood fore and afters steel shod at all bearing surfaces? Are battens and wedges efficient and in good condition? Are tarpaulins in good condition and in accordance with rule requirements? Are lashings provided in accordance with rule requirements?											

Particulars of any special features:—

Endorsement at first survey and at surveys for renewal of Certificate:—

The fittings and appliances are in accordance with the particulars shown on this form (or as now modified) and are in good condition.

VESSEL HAS BEEN EXAMINED IN DRY DOCK AND AFLOAT AND SPECIAL SURVEY CARRIED OUT WITH A VIEW TO VESSEL BEING CLASSED IN THE REGISTER BOOK 100A1 AND RECEIVE A NOTATION OF S.S (HAMBURG) 4.46. THE FITTINGS AND APPLIANCES ARE IN ACCORDANCE WITH THE PARTICULARS ON THIS FORM AND ARE IN GOOD CONDITION EXCEPT CARGO TANK AND CARGO HOLD HATCH COVERS WHICH REQUIRE JOINTING TO BE MADE WATER TIGHT, IT IS SUBMITTED THAT THE LOAD LINE CERTIFICATE BE ISSUED FOR THE MAXIMUM PERIOD WHEN THIS REQUIREMENT HAS BEEN COMPLIED WITH.



© 2021

Lloyd's Register Foundation