

**SHEERSTRAKE**  
4'0" x 15' FOR 3/4" L FROM AFT  
END OF ENG. ROOM TO 18' AT  
ENDS. BUTTS LAPPED & TR.  
RIV. 1/2" LAP. 1/8" RIV.

**H STRAKE**  
13 1/2" x 19' FOR 3/4" L AMIDSHIP TO 16' AT ENDS  
BUTTS LAPPED & T.R. 1" LAP. 3/4" RIV.

**G STRAKE**  
13 1/2" x 19' FOR 3/4" L AMIDSHIP TO 16' AT ENDS  
BUTTS LAPPED & T.R. 1" LAP. 3/4" RIV.

**F STRAKE**  
13 1/2" x 19' FOR 3/4" L AMIDSHIP TO 16' AT ENDS  
BUTTS LAPPED & T.R. 1" LAP. 3/4" RIV.

**E STRAKE**  
14" x 19' FOR 3/4" L AMIDSHIP TO 17'5" AT ENDS  
BUTTS LAPPED & T.R. 1 1/4" LAP. 3/4" RIV.

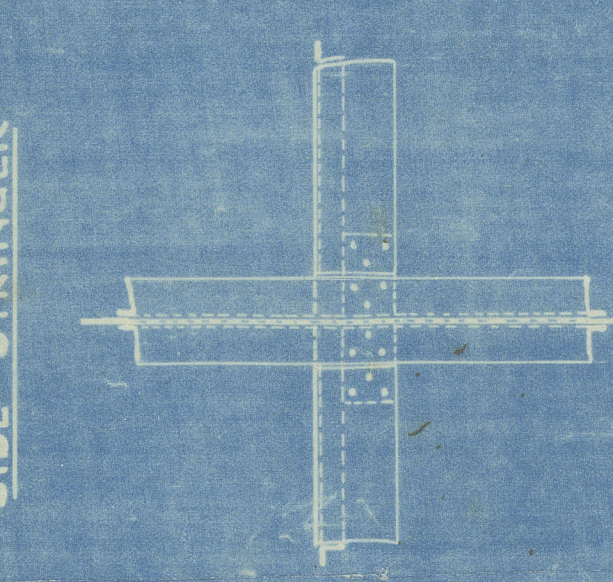
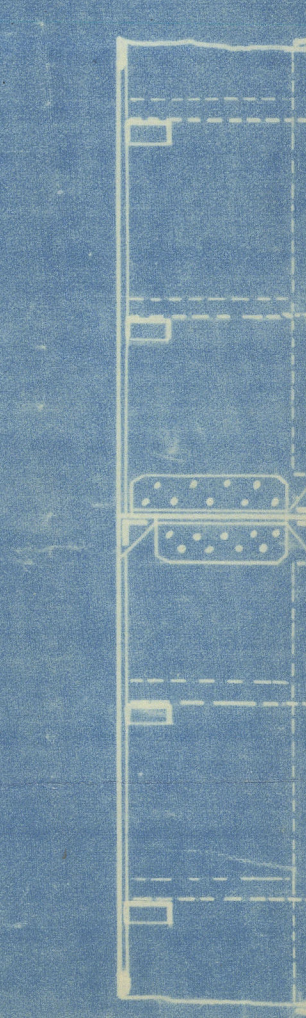
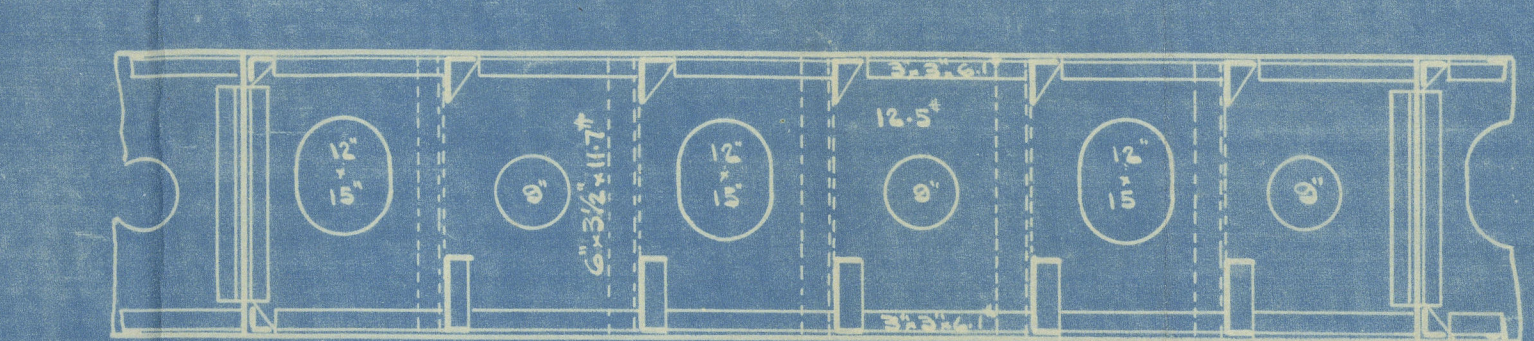
**D STRAKE**  
13' FOR 3/4" L AMIDSHIP TO 17'5" AT ENDS  
BUTTS LAPPED & T.R. 1 1/4" LAP. 3/4" RIV.

| RIVETING OF SECTIONAL MATERIAL |        |                             |        |
|--------------------------------|--------|-----------------------------|--------|
|                                | PITCH  |                             | PITCH  |
| C/L KEELSON UPPER ANGLE        | 4 1/2" | WEB FRAMES TO SHELL         | 5 1/2" |
| LOWER                          | 4 1/2" | FRAME FACE ANGLE            | 6"     |
| VERTICAL                       | 5"     | SIDE TANK STIFFERS          | 6"     |
| SIDE TO FLOORS                 | 5 1/2" | TOP ANGLES                  | 5"     |
| TO TANK TOP SHELL              | 6"     | W.T. BHD. BOUNDARY BARS     | 4 1/2" |
| TANK MARGIN ANGLE              | 4 1/2" | BHD. STIFFERS IN HOLDS      | 7"     |
| BILGE FRAMES TO BRKT.          | 5"     | SHOWN AFT PEAK & BILGE ROOM | 6"     |
| SHELL                          | 6"     | DECK BEAMS EVERY FRAME      | 7"     |
| TANK TOP STIFFENERS            | 6"     | ALT.                        | 8"     |
| FRAMES TO SHELL                | 6"     | GUNWALE BAR                 | 4 1/2" |
| FLOORS                         | 8"     | HATCH COAMING TO DECK       | 4 1/2" |
| IN MACHINERY SPACE             | 6"     | HOUSE                       | 4 1/2" |
|                                |        | STIFFENERS                  | 7"     |

**EQUIPMENT**  
2 STOCKLESS ANCHORS 3800 LBS. EACH  
1 STERN ANCHOR 1900 LBS.  
150 FATHOMS 1 1/2" STUD CHAIN CABLE  
150 FATHOMS 1 1/2" DIA. STEEL WIRE ROPE HAWSE

**BULKHEADS**  
COLLISION BULKHEAD PLATING 14" STIFFERS 6" x 3 1/2" x 15' C  
VERTICAL & HORIZ. SPACED 30" x 48" RESPECTIVELY  
SCREEN BULKHEAD PLATING 12" x 12" x 14" WING PLATE  
STIFFENERS 5" x 3 1/2" x 15' C SPACED 30" VERT.  
W.T. BULKHEAD 21" PLATING 12" x 12" STIFFERS 5" x 3 1/2" x 15' C  
SPACED 30"  
AFT PEAK BHD. PLATING 14" STIFFERS 5" x 3 1/2" x 15' C  
VERTICAL & HORIZ. SPACED 30" x 48" RESPECTIVELY  
W.T. BULKHEAD BOUNDARY BARS 5" x 5" x 14' 3"

**STEM** 8" x 2 1/2"  
**STERNPOST** 8" x 4 1/2"  
**RUDDER STOCK** 8 1/4" DIA.



16 CLASS AMERICAN BUREAU OF SHIPPING  
"GREAT LAKES DEPARTMENT"  
**MIDSHIP SECTION**

CANAL SIZE SELF UNLOADER  
LENGTH S.F. 246.0  
WIDTH 43.0' MIN  
DEPTH 25.0' MIN

MIDLAND SHIPBUILDING CO. LIMITED  
MIDLAND, ONTARIO

SCALE 1/2" = 1' FOOT HULL NO. 11  
DRAWN BY RACED BY DCM CHECKED BY JMC  
DRAWING NO. DATE June 8th 1920  
PRINT NO. SHEET OUT

SEE PLAN OF ALTERATIONS  
ATTACHED TO MTL RIT 10599  
4.55



Midland S.B. Co.

No 11

Section

S.S. "Glenelg"

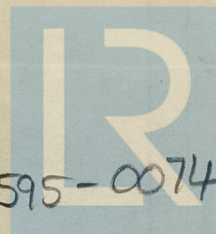
Midland S.B. Co.

No 11

Mid. Section

S.S.

"Glenelg"



© 2020

Lloyd's Register  
Foundation

004591-004595-0074