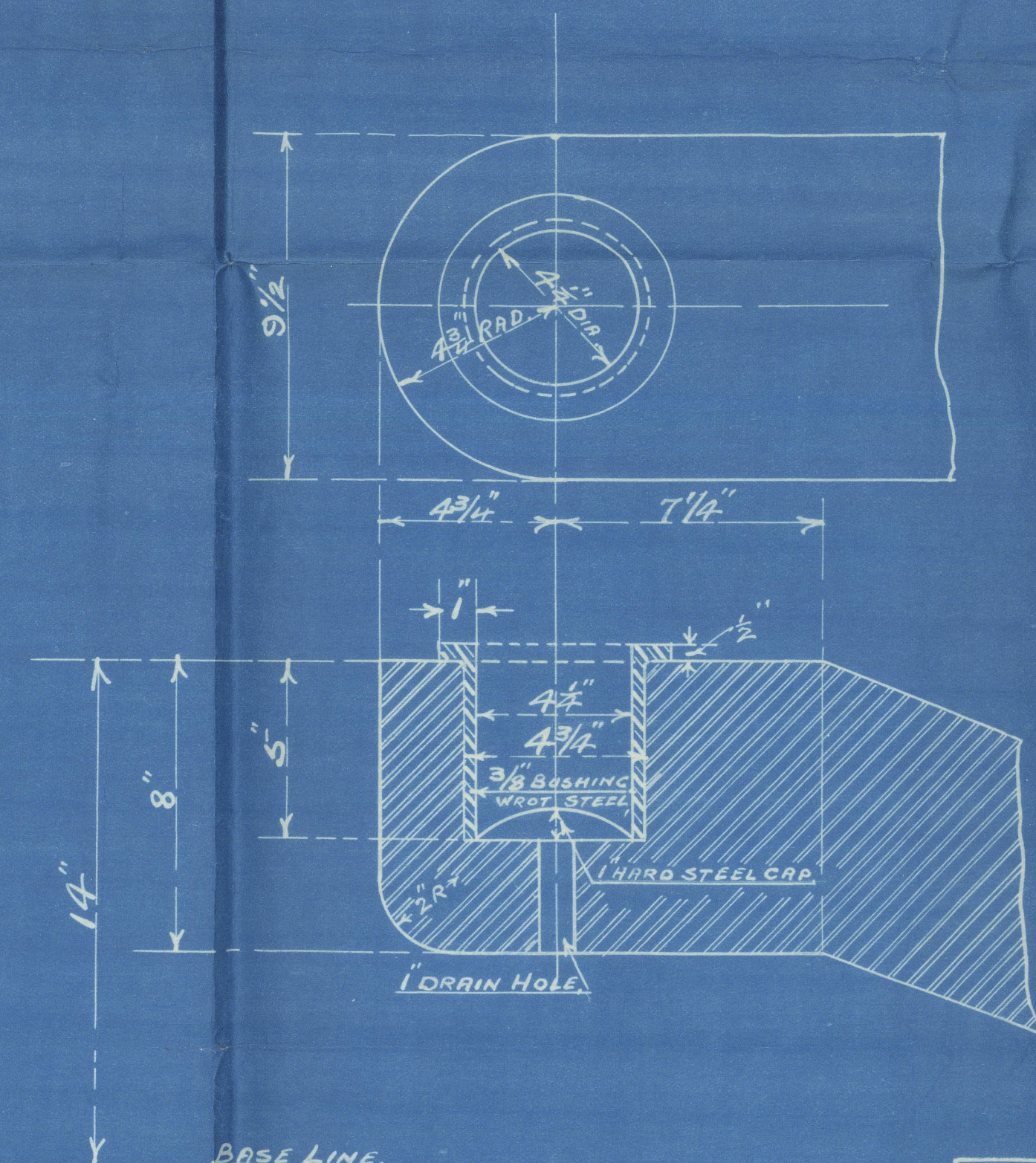


SPARE TILLER.
1 OFF. CAST STEEL. PAT. NO. M-138.
SCALE 1"=1 FOOT.



DETAIL AT HEEL.
3'-1 FOOT.

MATERIAL TO REQUIREMENTS OF AMERICAN BUREAU OF SHIPPING.

- 1 RUDDER STOCK - WROT IRON.
- 1 RUDDER POST - WITH ARMS
CAST STEEL - 16' 2 1/2" LONG.
- 1 STERN FRAME - CAST STEEL.
- 1 BEARING - CAST STEEL.

STERN FRAME & RUDDER.	
MIDLAND SHIPBUILDING CO. LIMITED MIDLAND, ONTARIO	
SCALE 3/4"=1 FOOT.	HULL NO. 11.
DRAWN BY A.C.	DATE 11/19/20/22
CHECKED BY A.C.	PRINT NO. 64-9
APPROVED BY	NOTED BY

APPROVED
JUL 12 1922
AMERICAN BUREAU OF SHIPPING
W. H. W. W. W.

299.



Madame

B. II.

Sturfrance
Ruadan

004591-004595-0073



© 2020

Lloyd's Register
Foundation

Glenelg Midland SB No 11

Rudder plan rec^d in
connection with questions
affecting Midland No 12

Bag

S. S. Glenelg
Stemframe & Rudder

Midland No 11
Stemframe & Rudder

Glenelg
Received in connection with
No 12.

*Received in connection with
No 12.*

