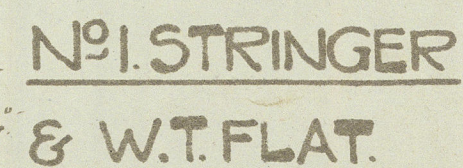


BEAMS COR
CHIPPED W
AND WELD



WATERTIGHT FLAT SE				
MARK	N ^O FF	LENGTH	SCANTLING	
F.P. ⁸	1 BA	20'-0"	8" x 3 1/2" x 7/16 BA	
	82 1 "	18'-10"	"	
	83 1 "	17'-0"	"	
	84 1 "	14'-9"	"	
	85 1 "	12'-9"	"	
	86 1 "	10'-7"	"	
87/88	1 "	15'-0"	"	
89/90	1 "	13'-0"	3" x 3" x 3/8"	FL
FORE END FRAMING				
EEF/1	2 ANG	18'-0"	3 1/2" x 3 1/2" x 7/8"	FOR
	2 3 "	26'-0"	4" x 4" x 7/8"	VE
	3 1 ANG	12'-0"	"	
	4 1 "	10'-0"	3 1/2" x 3 1/2" x 7/8"	W
	5 1 "	22'-0"	3" x 3" x 3/8"	VT
	6 1 "	22'-0"	6" x 6" x 1/2"	P
	7 2 ANG	25'-0"	7 1/2" x 3 1/8"	

№ 2 STRINGER.

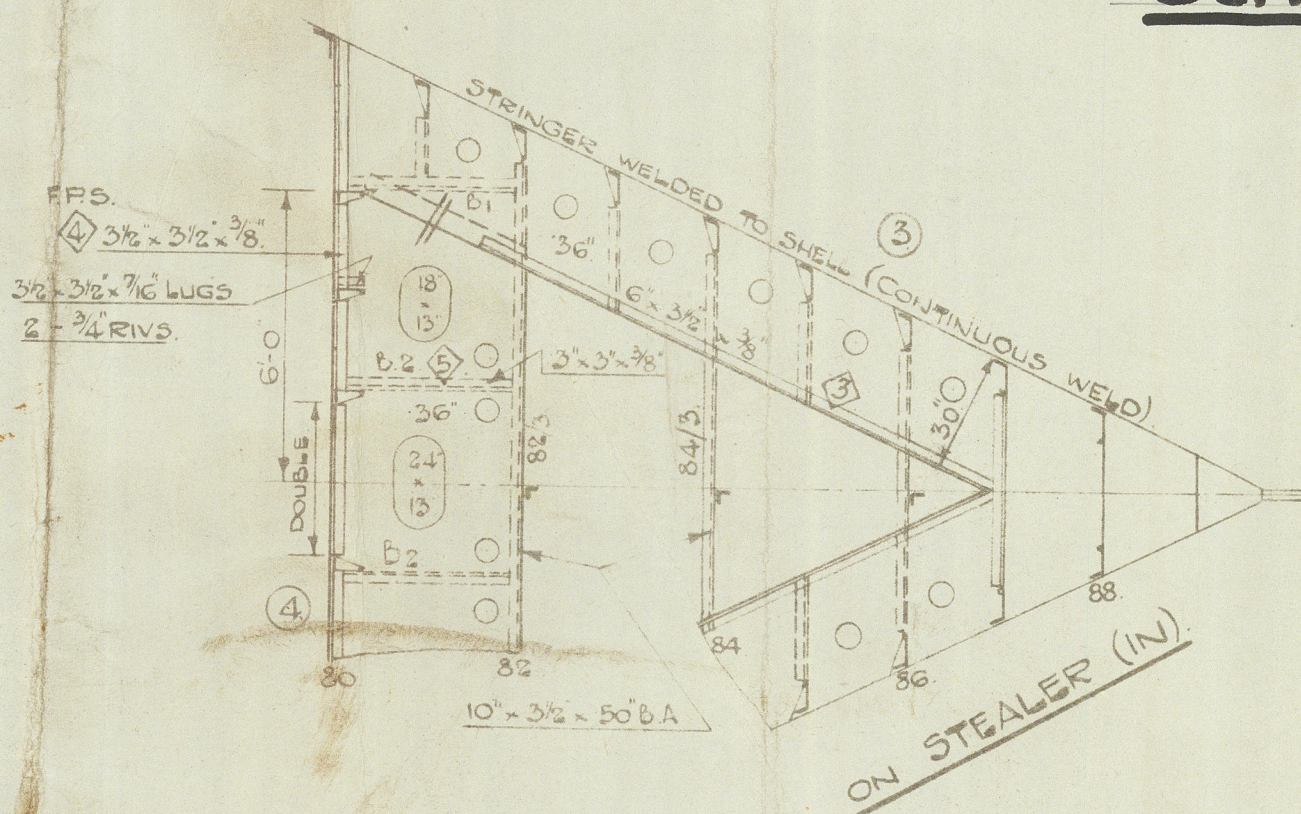
FORE END FRAMING				
MARK	N° OFF	LENGTH	BREADTH	TKS.
FEF/1	1 PL	18'-3"	55 1/2"	30"
2.	1 "	12'-6"	23 3/4"	40"
3	2 PLs	11'-0"	22"	48"
4.	1 PL	8'-0"	24 1/2"	40"
5.	2 PLs	11'-8"	39"	36"
6.	2 "	13'-0"	30"	50"
7	1 PL	5'-3"	24"	48"
8	2 PLs	12'-0"	21 1/2"	48"
9	1 PL	4'-4"	15"	34"

Nº 3 STRINGER

FORE END FRAMING

Nos 1194 + 1195

SCALE 1/4 INCH = ONE FOOT



No 4. STRINGER

Lloyds
5.131



004573- 004578- 0176

~~1194~~
3

HARLAND & WOLFF LTD.
BELFAST

No. S. 1194 / 5

TITLE Fore End Framing

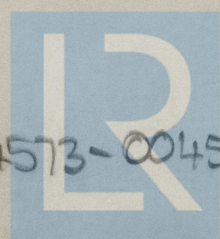
DATE APPROVED 12. 12. 42

Belfast Ref No 13626 - 1194 - Harland

1195

13662 - Nassarius

2



© 2021

Lloyd's Register
Foundation