

23 NOV 1928

NOS 629 & 630 (BARCLAY CURLE) 631-635
No 1381 (SOUTHWICK) 1356
Nos 1383-1385. (WALLSEND) 87, 91, 93, 95

MIDSHIP SECTION.

DIMENSIONS:- 253'-0" B.P. x 43'-4" EXT. x 20'-0" M.L.

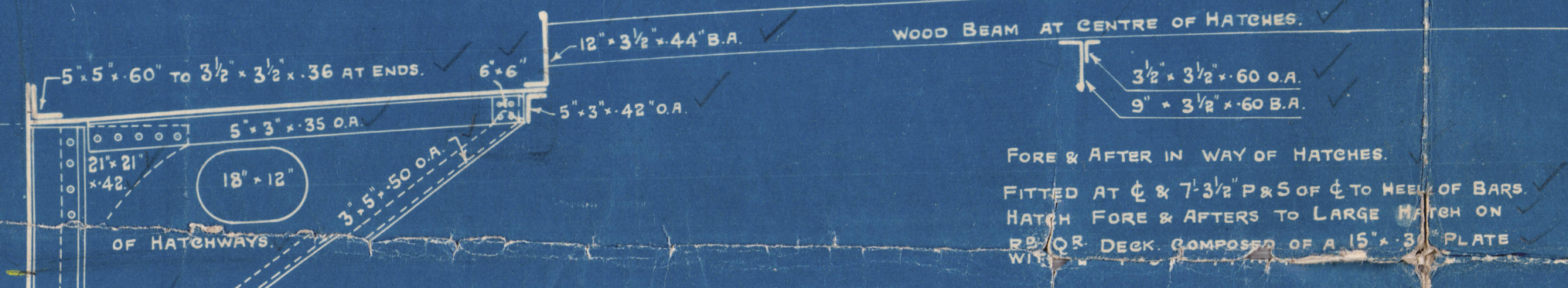
TO CLASS B.S. FOR SERVICE ON GREAT LAKES AND RIVER ST. LAWRENCE.

SCALE:- 1/2" = 1 FOOT.

- EQUIPMENT.
- 2 BOWER ANCHORS STOCKLESS EACH 36 CWT.
 - 1 STREAM EX-STOCK 11 1/4"
 - 210 FTHS. 1 1/16" STOD CHAIN CABLE.
 - 75 " 3 1/2" STEEL STREAM WIRE.
 - 105 " 3 1/2" WIRE TOWLINE.
 - 2-90 " 6 1/2" HAWSERS.
 - 2-90 " 5 " "

253 x 43.25 x 20.0 x 75 = 1641
100 x 43.25 x 4.75 = 130
38.0 x 4.75 x 6.0 x 150 = 45.5
48.5 x 6.0 x 8.0 x 135 = 48.5
1580

STRINGER PLATE 8 1/2" x 62" to 36" AT ENDS BEYOND HATCHWAYS.
QUAD. RIV. BUTTS. TO BE CLEAR OF HATCHWAYS.



FRAME SPACING:- A.P. - 108 = 24' APART.
108 - 119 = 20' "
119 - 130 = 18' "

FRAMES IN AFT PEAK.

ENGINE ROOM	8' x 3' x 36" B.A.
BOILER ROOM	8' x 3' x 42" "
Nº 2 HOLD	8' x 3' x 36" "
Nº 1 HOLD	9' x 3' x 38" B.A. (FRM 75-97)

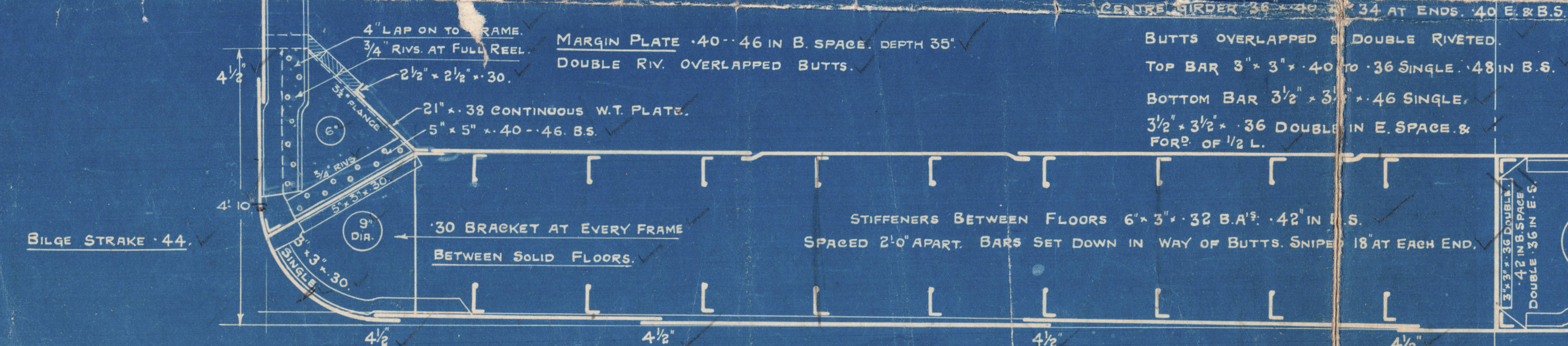
WAY OF DEEP BEAMS TO HAVE 8' x 3' x 36" B.A. WITH 6' x 6" x 70 REV. BAR FORMING 9' GIRDER.

FORE PEAK 6' x 3' x 36" B.A. TO UPPER D.K.

FORECASTLE 5' x 3' x 30" O.A. KNEED TO UPPER D.K.

Nº 1 HOLD (FRMS. 98-118) 8' x 3' x 36" B.A. WITH 6' x 3' x 40 REV. BAR ON EVERY FRAME FORMING 9' GIRDER. (SEE SECTION.)

SHELL - 44" TO 38."
BUTTS LAPPED & TREBLE 4 1/2"
RIV. FOR 1/2 L. TO DOUBLE AT ENDS.
Boss Plate .52.



BOTTOM PLATING .44 TO .38 AFT. .44 FOR P.
BUTTS LAPPED & TREBLE RIV. FOR 1/2 L.
TO DOUBLE AT ENDS.

KEEL PLATE 42" x 60"
TO .52 FOR P.
TREBLE RIV. OVERLAP BUTTS.

UPPER D.K. THRO' BEAMS 5' x 3' x 30" O.A. 5' x 3' x 42" AT HATCH ENDS.
" HALF BEAMS 5' x 3' x 30" O.A.
BEAMS ABREAST MACH'Y SPACE & AFT 6' x 3' x 36" O.A.
BEAMS FOR P. SEE PROFILE.

STEM BAR 7' x 2"
PROPELLER POST 7 1/8" x 5 1/8"
RUDDER HEAD 7' DIA.
RUDDER PLATE .87.

"Starwell" cut as shown - 23-6-32.
"Portwell" " " See letter 97-32.

TANK TOP PLATING .48 IN B. SPACE.
" " " 40 IN E. SPACE.
FLUSH BUTTS SINGLE RIV. IN HOLDS.
SEAMS " " " "

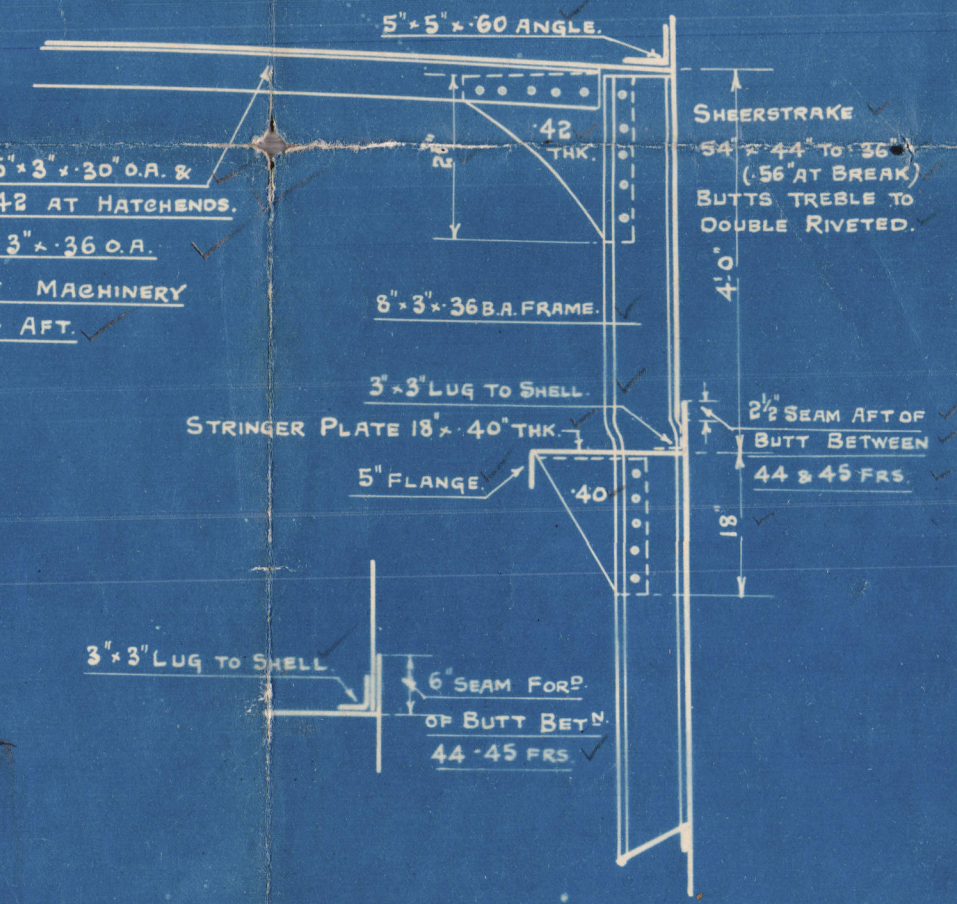
3' x 3' x 30" SINGLE .36 IN E.S. .42 IN B.S.
3' HOLES.
SOLID FLOORS EVERY 3' (SEE PROFILE)
FLOORS .30 IN HOLDS.
36 UNDER BOILERS .42 B.P.

Rº Dº BEAMS.
BEAMS 5' x 3' x 30" O.A. & 5' x 3' x 42" AT HATCH ENDS.
AND 6' x 3' x 36" O.A.
ABREAST MACHINERY SPACE & AFT.

FORECASTLE:-
BEAMS 7 1/2" x 3' x 40" B.A. ON ALT. FRG.
DECK PLATING .30.
SIDE PLATING .32.
BEAM KNEES 21" x 40". 5-3/4" RIVS.
SEE PROFILE FOR BEAMS AT ENDS.

UPPER D.K. PLATING .25 BETWEEN HATCHES & AT ENDS.
BUTTS OVERLAPPED & SINGLE RIV. AT ENDS.
SEAMS SINGLE RIVETED.

STRINGER PLATE 8 1/2" x 54" to 36"
RAISED Qº DECK PLT. .25. BUTTS TREBLE RIVETED



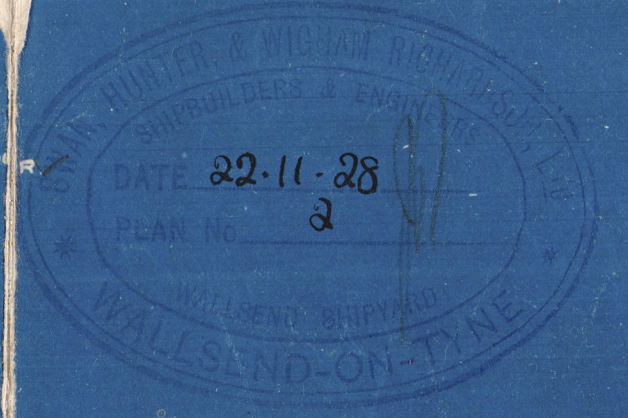
SECTION IN WAY OF
RAISED QUARTER DECK.

15' x 4' x 4" 49/62 CH.
FITTED THROUGHOUT Nº 1 HOLD.

8' x 3' x 36" B.A. WITH 6' x 3' x 40 O.A.
FRAMES 98-118.

6' x 3' x 50" B.A.
B.A. 12' x 3 1/2" x 50"
FRAMES 98-119.

SECTION IN WAY OF STRINGERS.



Midship Section

Swan Hunter & Wk. N^{os} 1391. 3.5.7
1381. 3.5.7.
1356.

Harclay Burke & Co. N^{os} 629. 0.1-2.3.
635.

Y. 6. 6-3-29.

28 - 11 - 28.

✓ 1381. Prescodoc *	✓ 632. Sioux
✓ 1383. Ganandoc	✓ 633. Fairlake.
✓ 1385. Lawrendoc	✓ 1387. Starwell
✓ 629. Sarniadoc	✓ 1391. Portwell
✓ 630. Voleandoc	✓ 1393. Lockwell
✓ 631. Algonquins.	✓ 1395. Samia.
✓ 1356. Farrandoc.	✓ 1397. Saracen.
now Clayton	✓ 635. Fairstream.

NOW
"FAIRRIVER."

NOW

FRANK WILKINSON

for

J. N. MC WATERS.

PLANS TRANSFERRED
TO SISTER VESSEL

Troisdac



© 2021

Lloyd's Register
Foundation

004573 - 004578 - 0080