

# No 915 MIDSHIP SECTION

SCALE 1/2 INCH = 1 FOOT.

LENGTH B.P. 350'-0" BREADTH MLD. 60'-0" DEPTH MLD. 17'-6"  
TO CLASS 100 A.1. "CARRYING PETROLEUM IN BULK."

DRAFT 17'-0" 14-1/2" moulded.

EQUIPMENT NUMBER NOT EXCEEDING 29,700.

LETTER "W."

3 BOWER ANCHORS	EACH	50 CMTS STOCKLESS.
1 STREAM	1A	EX. STOCK.
270 FATHOMS	2 1/4"	STUD CHAIN CABLE.
90	4 1/2"	STEEL WIRE.
120	4 1/2"	
90	2 1/2"	2 LENGTHS
90	2 1/2"	2

## NUMERALS

D. 17.5  
L x D. 350 x 17.5 = 6125  
L x [B + D] 350 x 77.5 = 27125  
5 [TRUNK TOP] 350 26.23 13.34

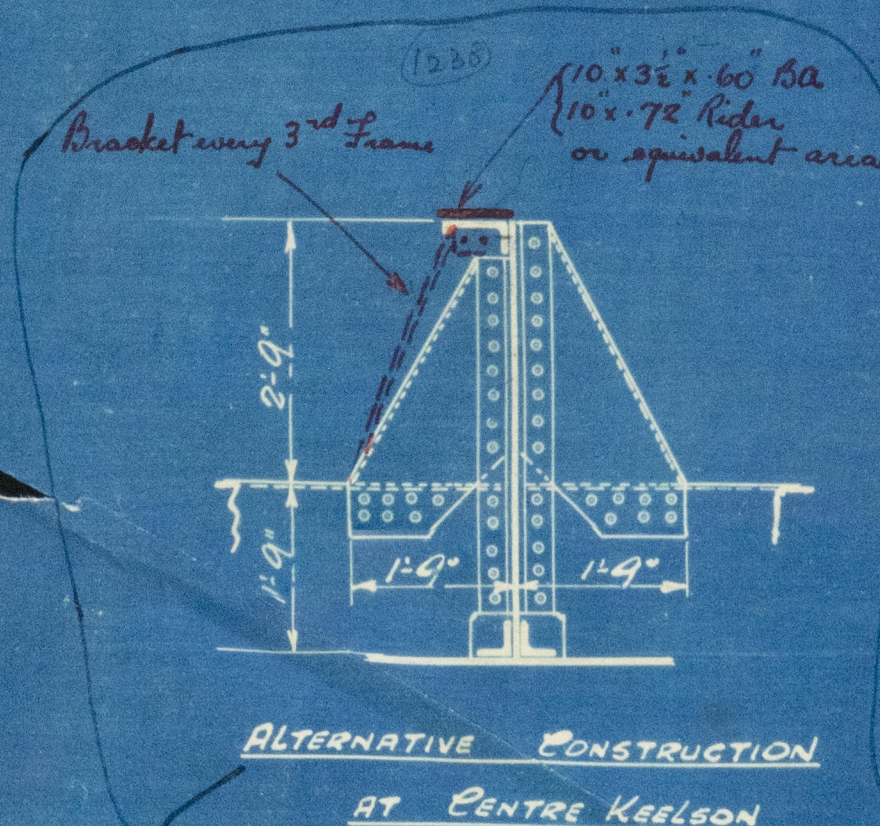
## BUDYANCY SPACE. [SEE PROFILE]

MAIN FRAMES 7' x 3' x 40' B.A.  
PEAK FRAMES 6' x 3' x 44' O.A. at 6' x 3' x 28' full.  
ALL SPACED 24" APART.  
PEAK FRAMING CARRIED UP TO  
POOP & FOLE DECKS ON EVERY  
FRAME.  
FRAMING CLEAR OF PEAKS.  
CARRIED UP TO FOLE DK.  
ON EVERY FRAME AND TO  
POOP DK. ON ALT. FRAMES.  
WITH 3' x 3' x 30" INTERMEDIATE ANGLES  
UNATTACHED AT BOTTOM.

## CARGO OIL TANK.

2 WEBS IN EACH TANK  
WEBS 30' x 18' x 36"  
FACE ANGLE 6' x 3' x 40" ANG.  
SINGLE 5' x 5' x 36" D.R.  
CONNECTION TO BULKHEAD.

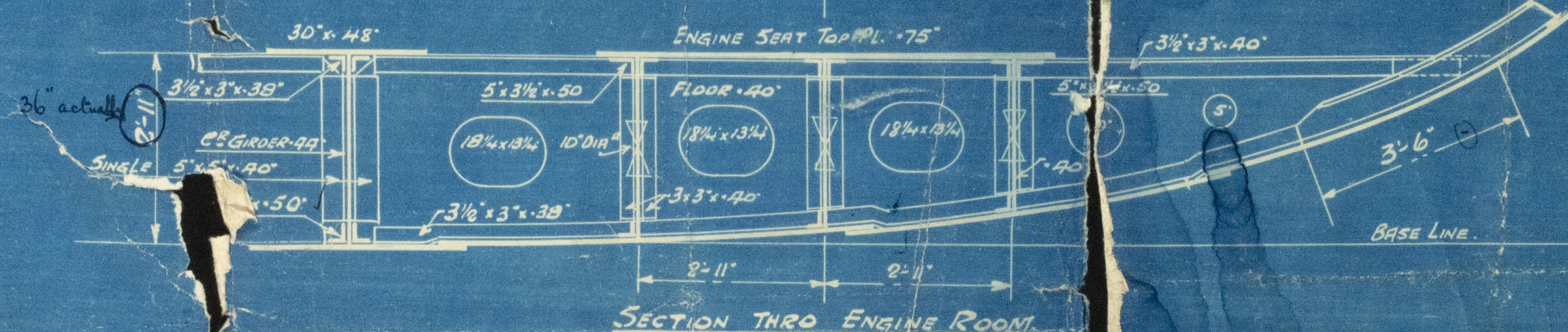
Brackets where cut  
for IL pillars.



ALTERNATIVE CONSTRUCTION  
AT CENTRE KEELSON

Not adopted

BOTTOM INCREASED 10% AS SHOWN  
TO SUIT OWNERS.



SECTION THRO ENGINE ROOM





ESSO MARACAY

Harland Wolff.

915

Midship Section

LR

Yes

①

S/S "MARACAY"

RETAIN

004564-004572-0177



© 2021

Lloyd's Register  
Foundation