

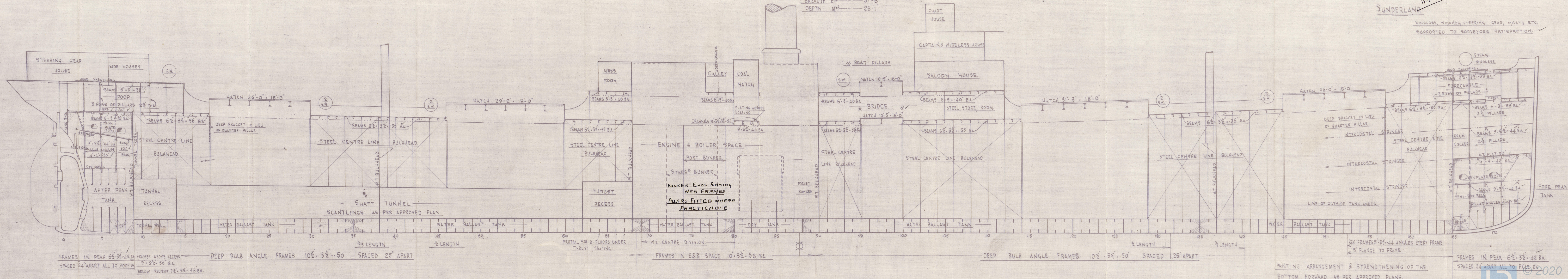
— AMENDED. —
PROFILE N^o 286.

— SCALE $\frac{1}{8}$ - ONE FOOT —

— DIMENSIONS. —
 LENGTH BP — 365'-0"
 BREADTH E₁ — 51'-6"
 DEPTH M₁ — 26'-1"

SIR JOHN PRIESTMAN & CO.
 SHIPBUILDERS.
 SUNDERLAND.

WINDLASS, WINCHES, STEERING GEAR, MASTS ETC.
 SUPPORTED TO SURVEYORS SATISFACTION.



PANTING ARRANGEMENT & STRENGTHENING OF THE
 BOTTOM FORWARD AS PER APPROVED PLANS.

FRAMES IN PEAK 6'-3" x 42" BA.
 SPACED 24' APART ALL TO FOLEY.

Sunderland

Sir John Priestman & Co

No. 286

PROFILE PLAN

AS BUILT

"
S. S. PENHALE"

N/P. PREVENZ

SUNDERLAND RPT. NO. 28415

X



© 2020

Lloyd's Register
Foundation

004556-004563-0005