

16/4/23.

# — CAST STEEL — STERN FRAME

No. 286.<sup>5</sup>/<sub>16</sub>. (IN STOCK).

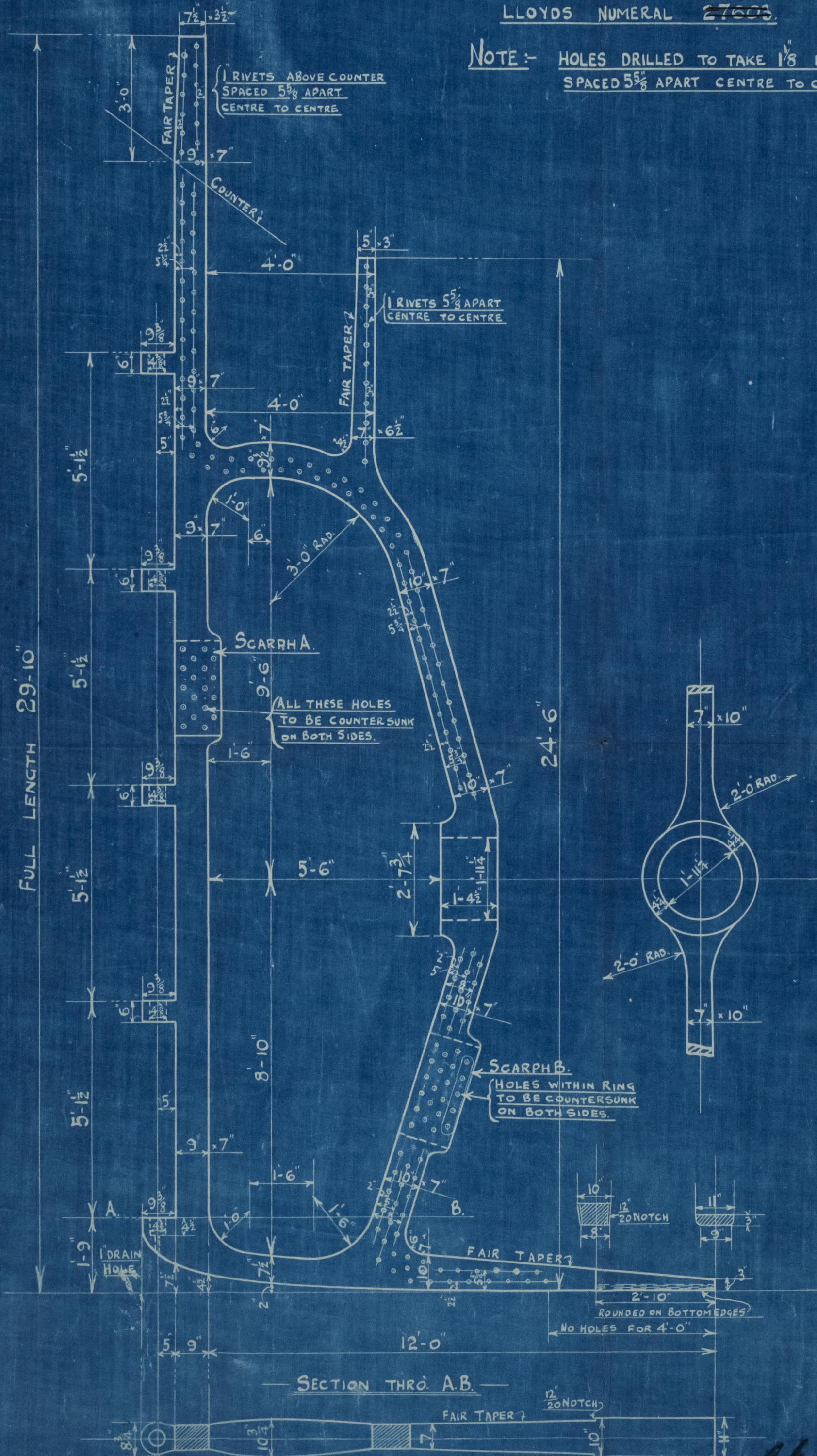
TO PASS LLOYDS SURVEY.

SCALE  $\frac{1}{2}$  = ONE FOOT.

9496.

LLOYDS NUMERAL 27003.

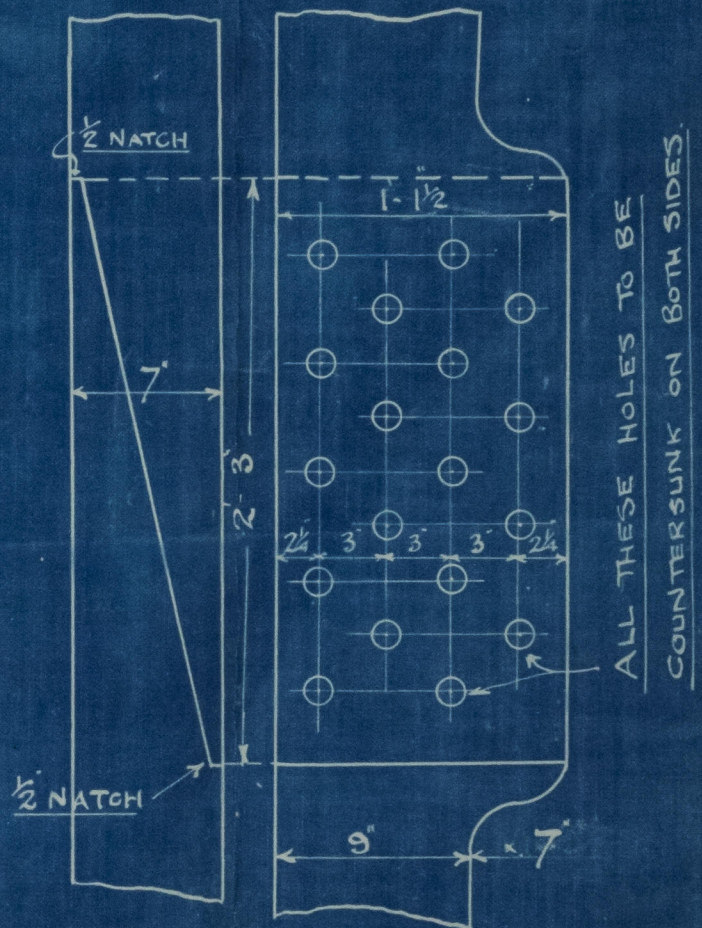
NOTE:— HOLES DRILLED TO TAKE  $\frac{1}{8}$ " RIVETS  
SPACED  $5\frac{5}{8}$ " APART CENTRE TO CENTRE



SKETCH OF SCARPH 'A'

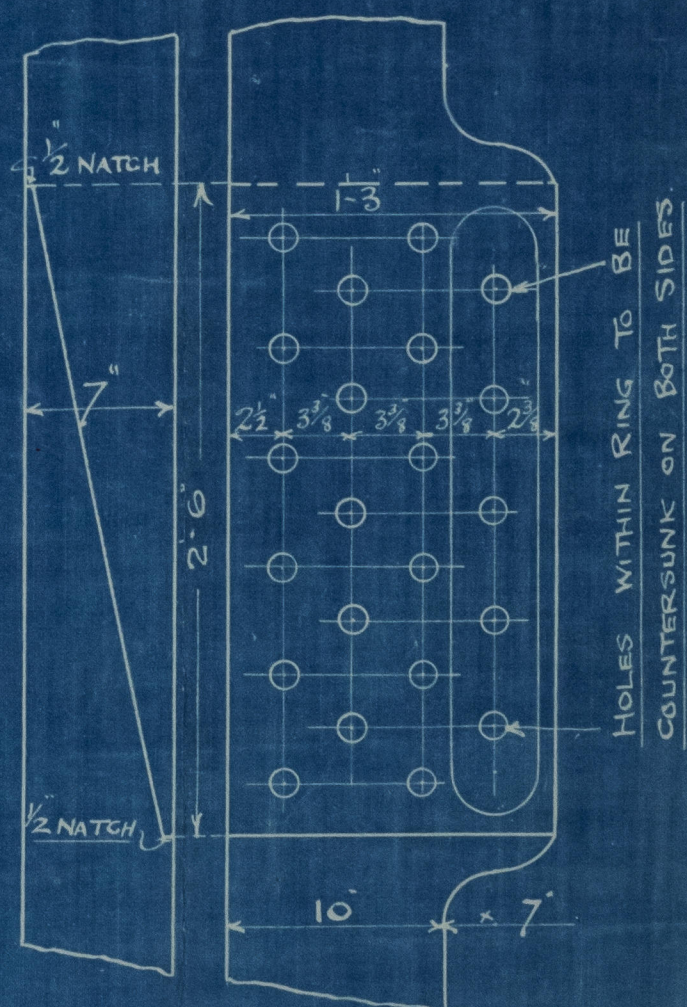
SCALE  $\frac{1}{2}$  = ONE FOOT

HOLES TO TAKE  $\frac{1}{8}$ " RIVETS



SKETCH OF SCARPH 'B'

HOLES TO TAKE  $\frac{1}{8}$ " RIVETS



JOHN PRIESTMAN & CO.,

SHIPBUILDERS,  
13/4/23. SUNDERLAND.

16.4.23.





⑤

SUNDERLAND

MESSRS. J. PRIESTMAN & CO.

S. S. N° 286

BTERN FRAME

(CAST STEEL)

SS. "PENHALE"

N° "PREVENT"

SUNDERLAND RPT. NO. 28415

+



© 2020

Lloyd's Register  
Foundation

004556-004563-0002