

N^o 1242
RUDDER PLAN.

SCALE $\frac{1}{2}$ " & 3" = 1 FOOT

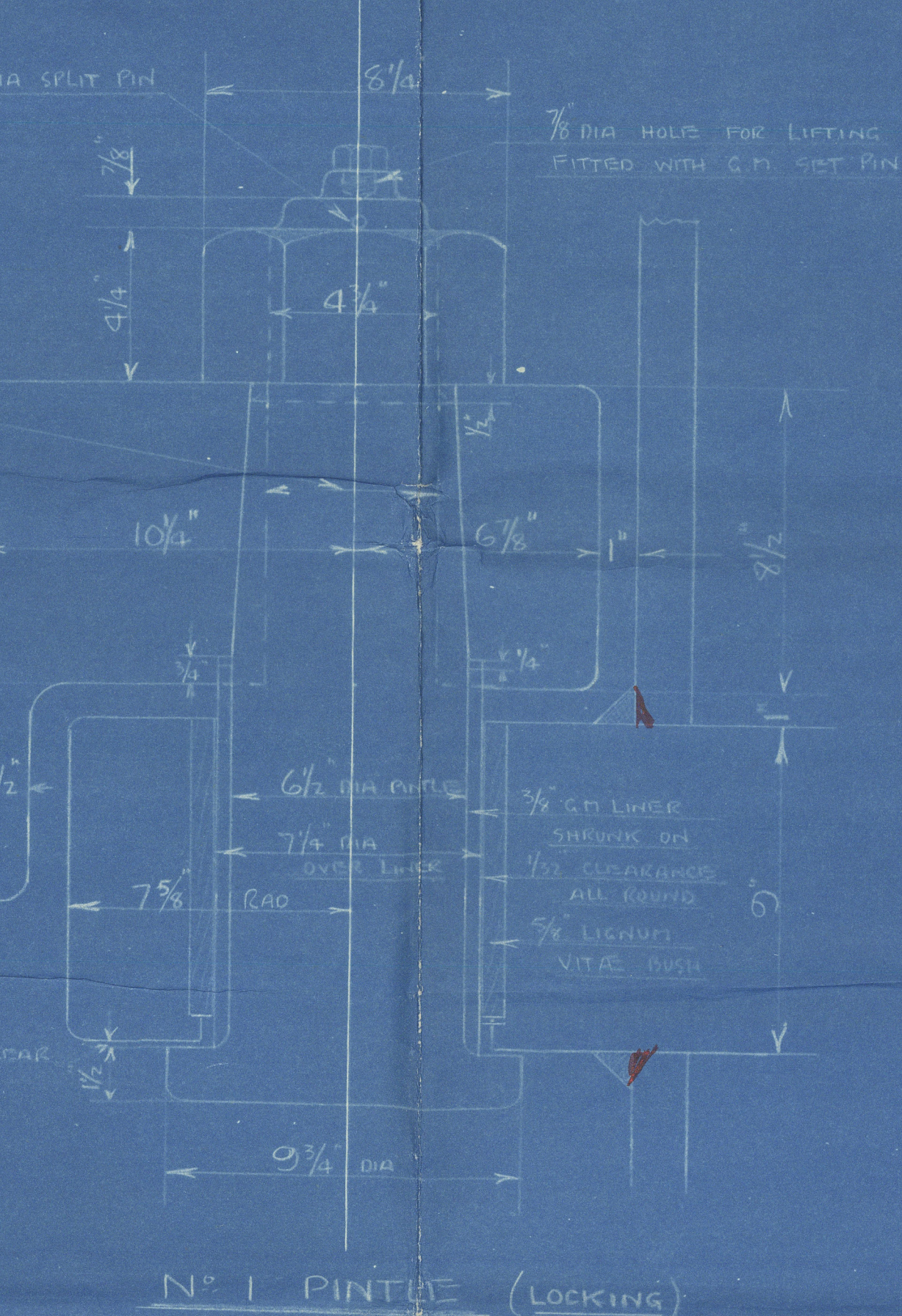
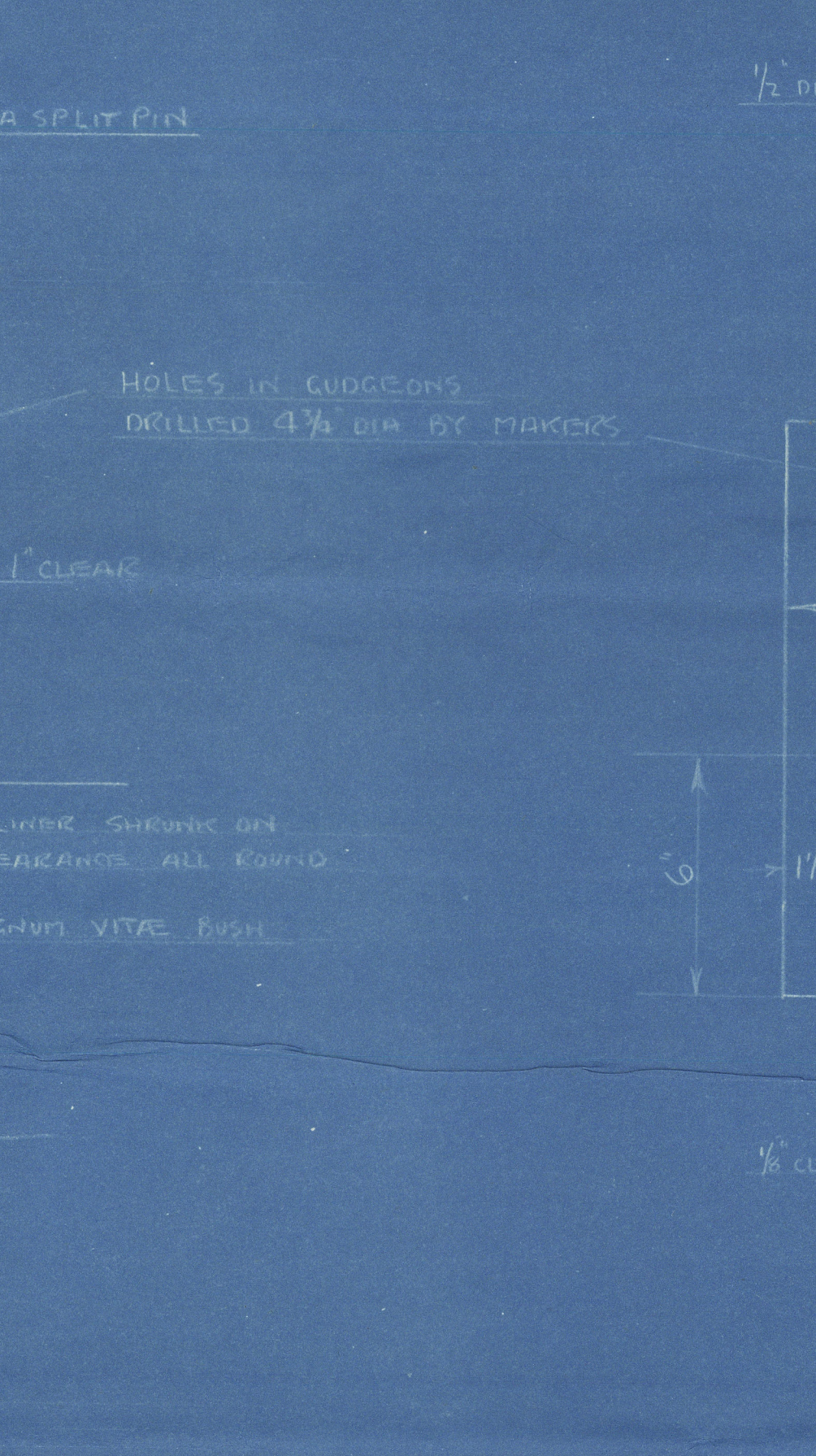
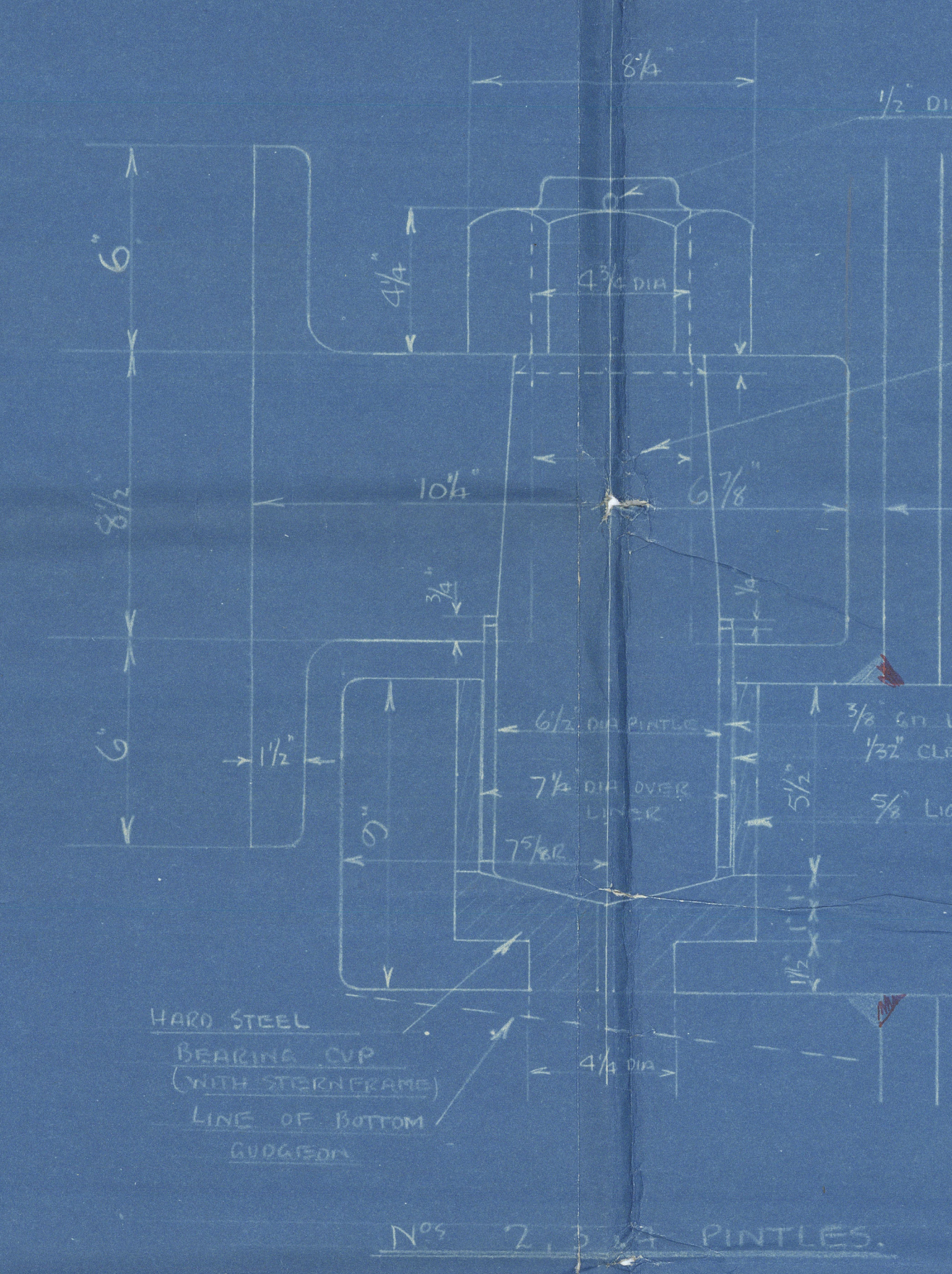
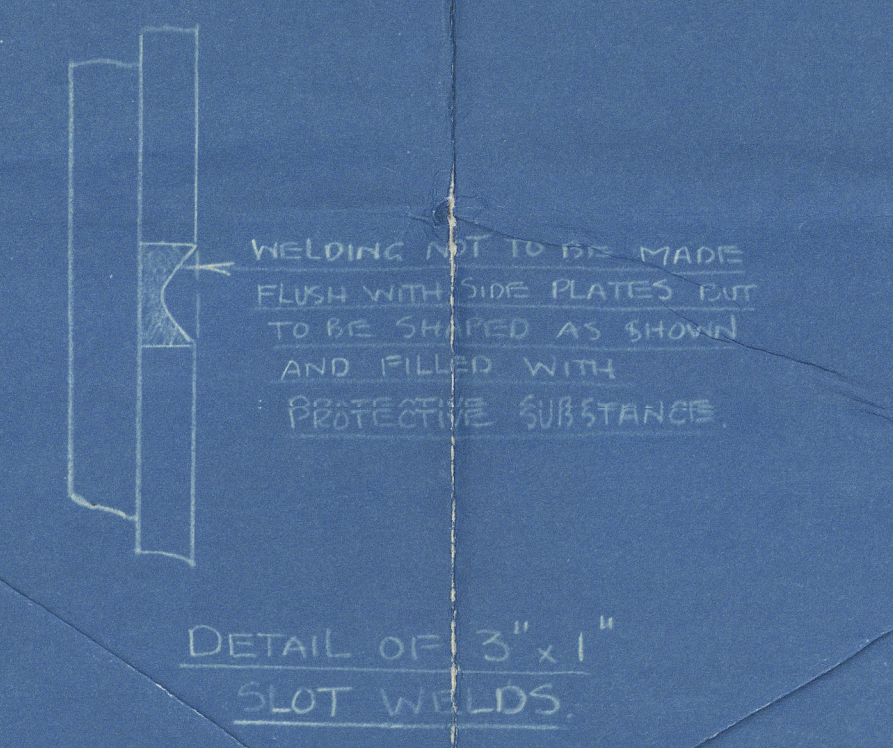
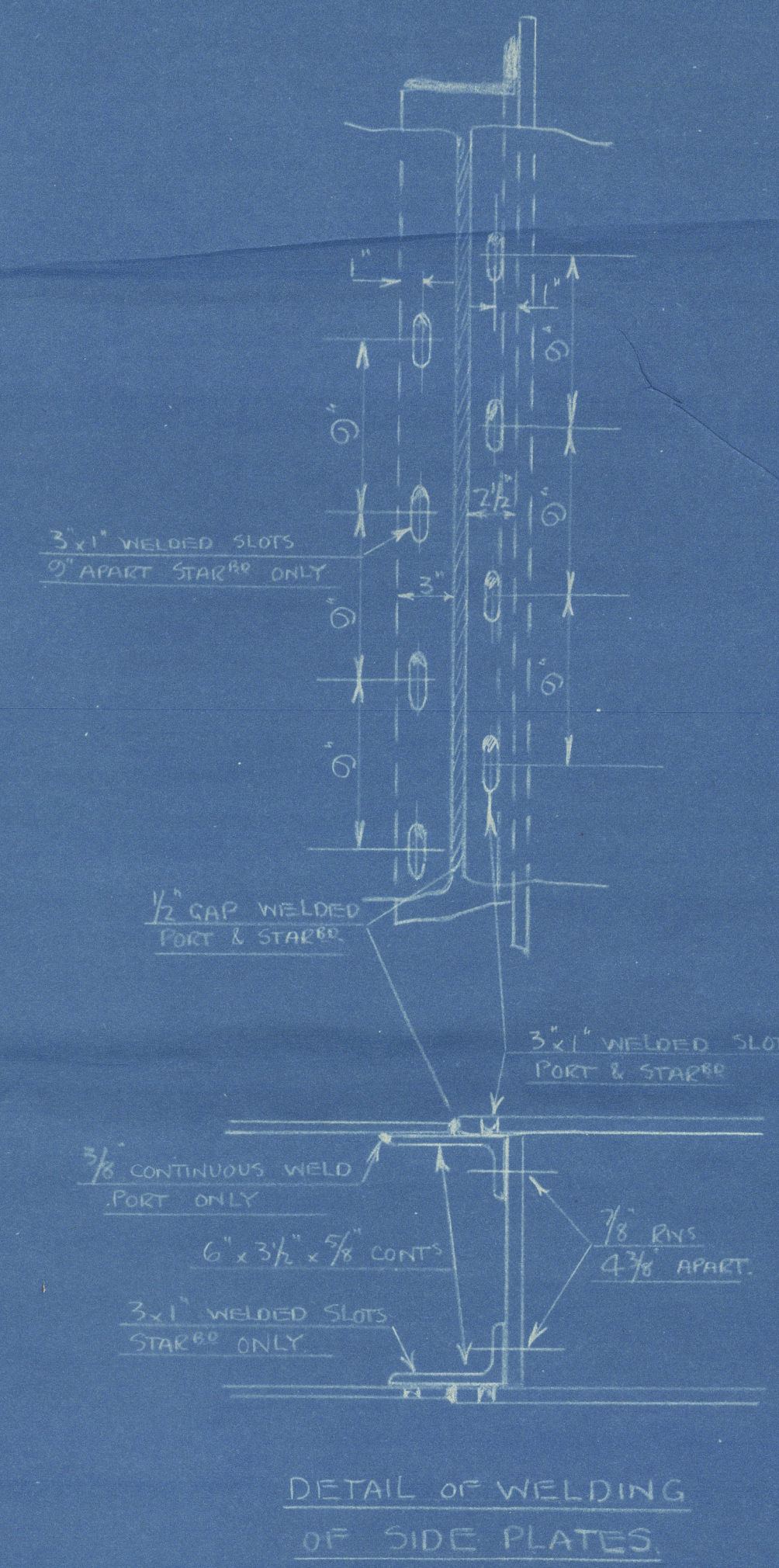
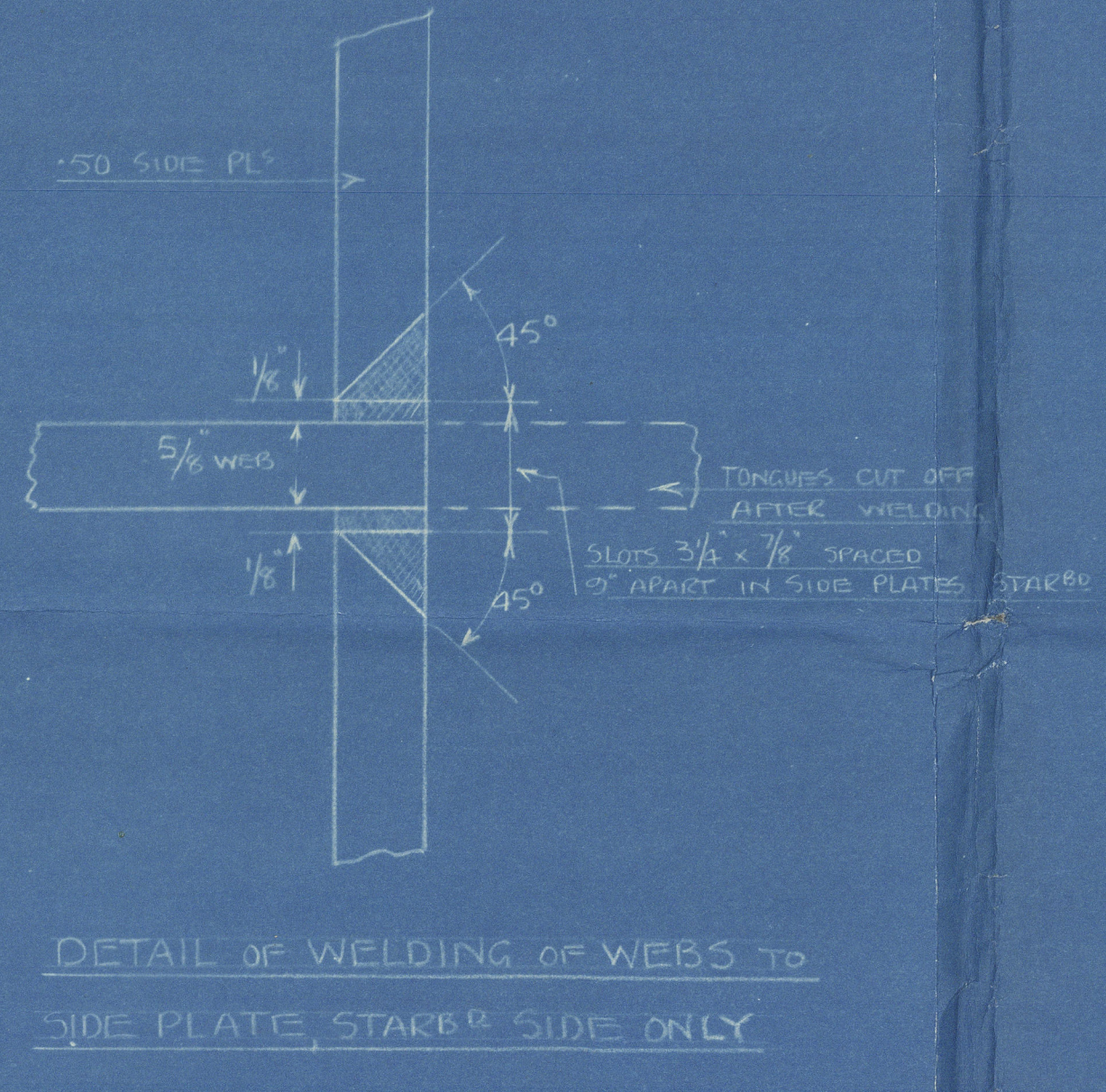
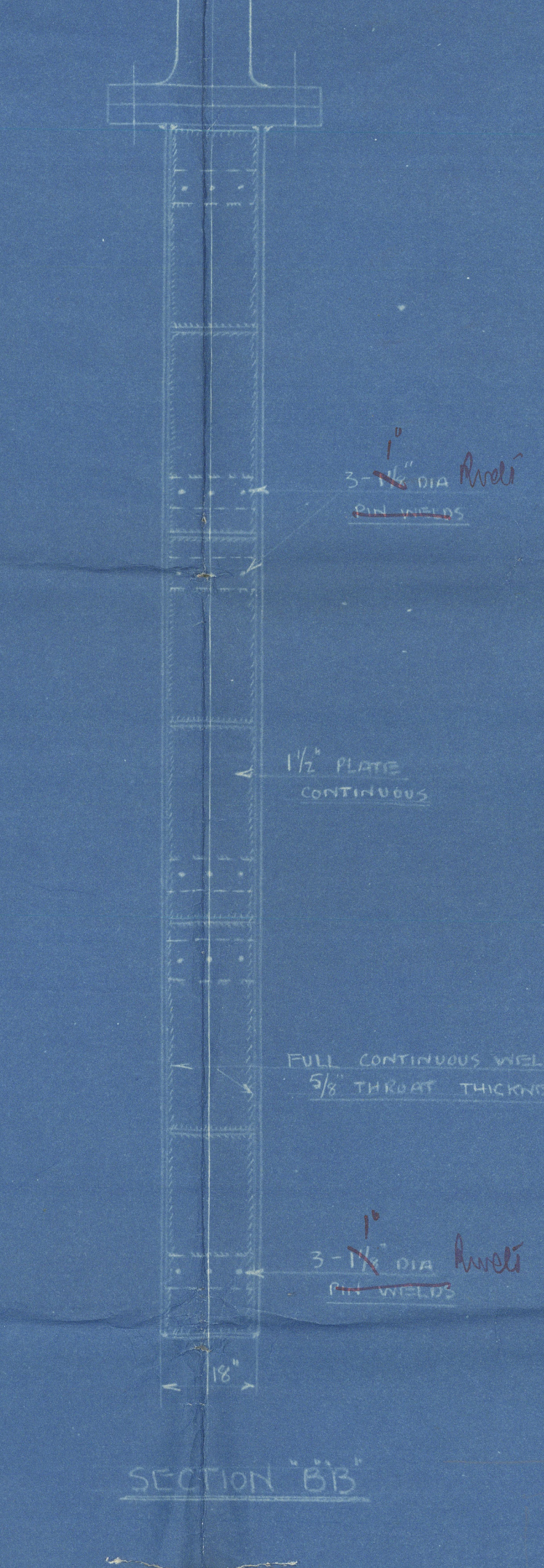
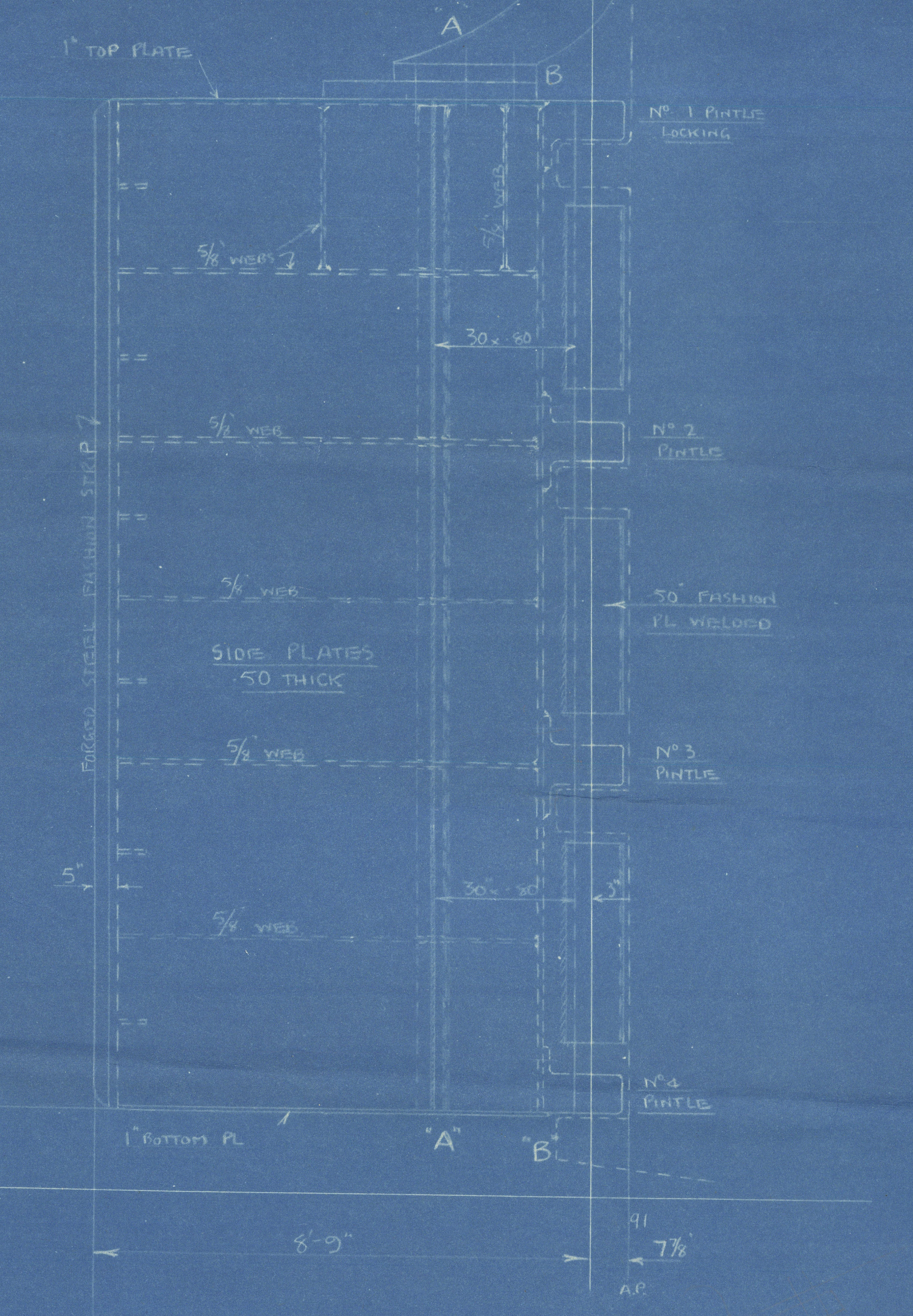
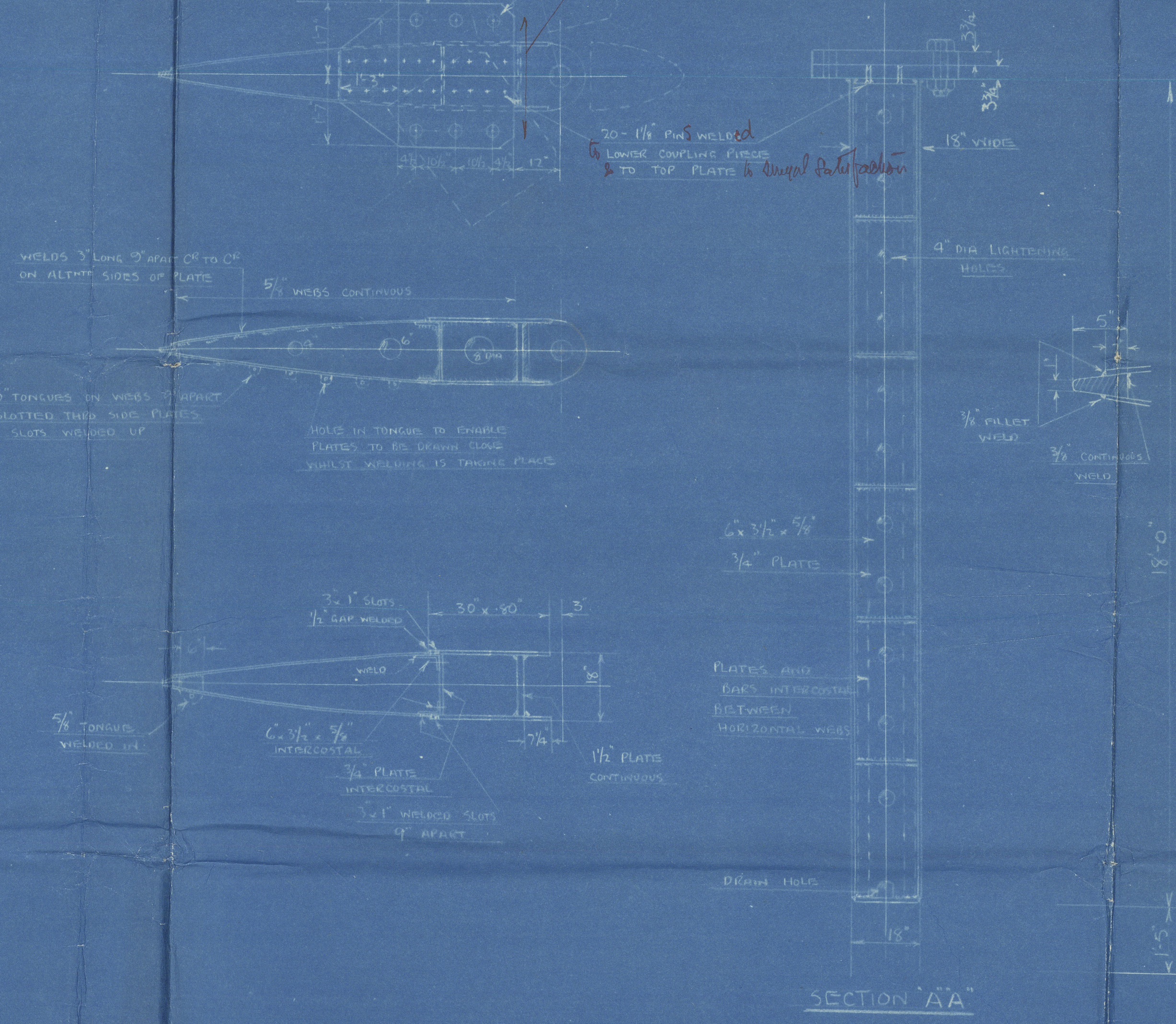
MATERIALS- RUDDER STOCK - FORGED STEEL
RUDDER COUPLING PIECE - FORGED STEEL
PINTLES & GUDGONS - FORGED STEEL
TO LLOYD'S TESTS AND REQUIREMENTS.

SPEED OF VESSEL - 12 KNOTS
MAX^m RUDDER ANGLE - 35°
RUDDER AREA - 107.5 sq ft
AREA EFFICIENT - 197.5 = 30.5

RULE DIA OF STOCK INCLUDING 10%
INCREASE IN DIA FOR OIL TANKERS = 12 7/8"
+ 10% INCREASE IN AREA (SPECIFIED) = 13 1/2"

NOTES - POWER STOCK, COUPLING PIECE, COMPLETE WITH BOLTS, NUTS AND
SPLIT PINS TO BE SUPPLIED BY CONTRACTOR.
FORGED STEEL GUDGONS - ALSO COMPLETE WITH NUTS
AND SPLIT PINS TO BE SUPPLIED BY CONTRACTOR.
GUDGONS TO BE DRILLED AS SHOWN.
KEYWAY AT HEAD OF STOCK CUT, AND HOLD FOR LISTING TAPPED BY CONTRACTOR.
OUTSIDE OF GUDGONS TO BE WELL SCRAPED TO TAKE PLATING.
PLATES, ANGLES AND FORGED STEEL STOCK SUPPLIED AND FITTED BY SHIPBUILDERS.
PARTS TINTED RED TO BE FINISHED.

BASE PLATES - COUPLING LAST 1/2" THICKER
TO BE SUPPLIED BY CONTRACTOR.
BASE MUST BE 1/2" LESS IN DIA
THAN STOCK, AND BOLT TO BE SUPPLIED
BASE TAPPED 1/2" DIA LARGER IN BODY.



13

HARLAND & WOLFF LTD.
BELFAST

No. 0242
TITLE Rudder
DATE APPROVED 11/6/43

Belfast Rpt. No 13753
... Empire Saturn No 1242
N.N. NAYADIS

GLASGOW REPORT NO 68850



© 2020

Lloyd's Register
Foundation

004527-004533-0108