

Nº 1242.

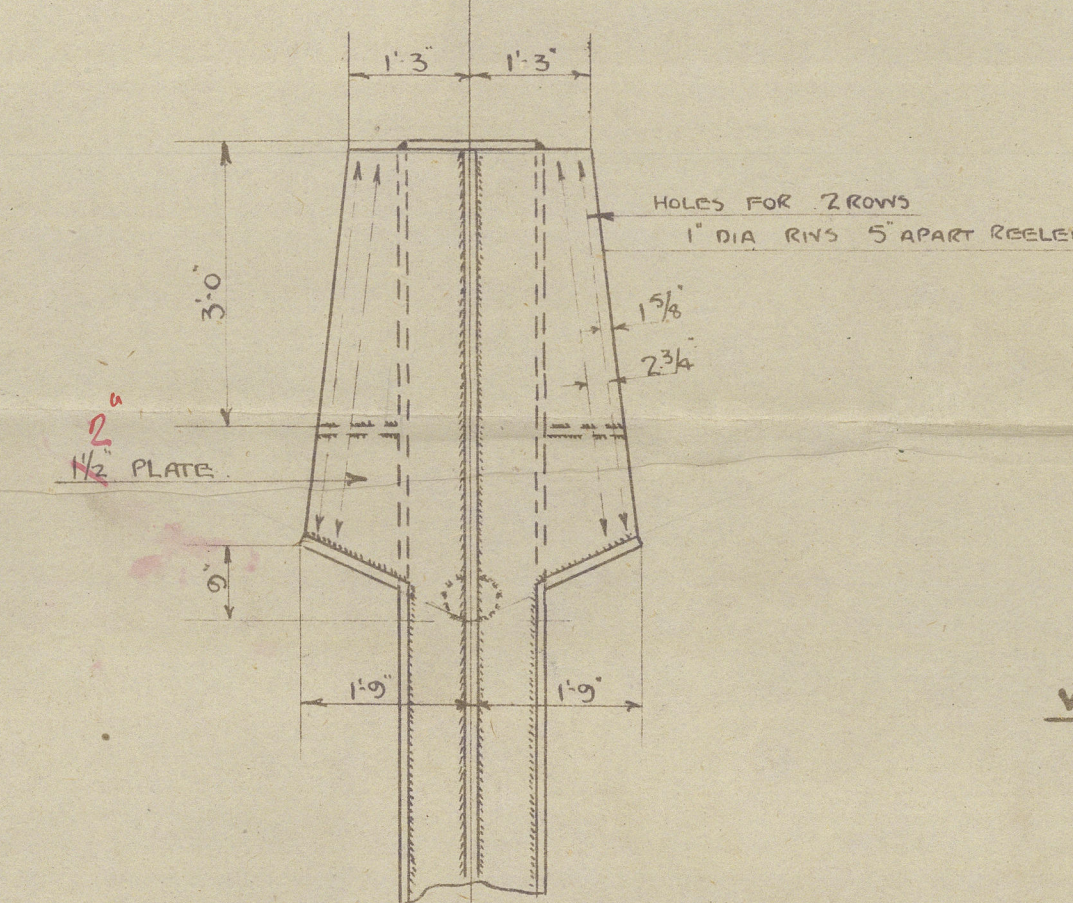
STERNFRAME.

SCALE $\frac{1}{2}" = 1$ FOOT.

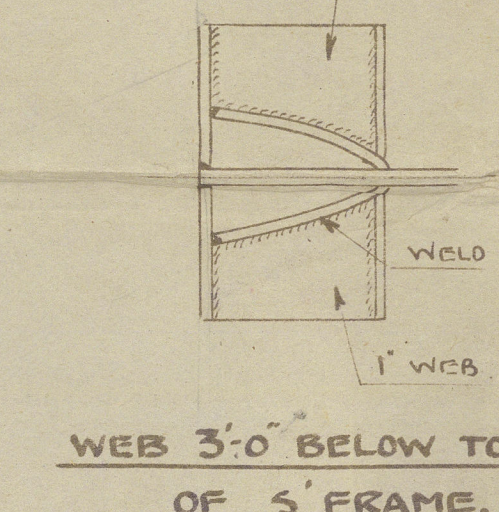
MATERIALS : SOLE PIECE : FORGED STEEL
GUDGEONS : FORGED STEEL
 TO LLOYDS TESTS AND REQUIREMENTS.

NOTES

FORGED STEEL GUDDONS TO BE SUPPLIED AND FITTED
BY CONTRACTOR, AND CARE TO BE TAKEN TO ENSURE
THAT THEY ARE ACCURATELY ALIGNED
LIGNUM VITAE BUSHES AND HARD STEEL BEARING CUPS
TO BE SUPPLIED AND FITTED BY H.W.
HOLES TO BE DRILLED $\frac{1}{16}$ LARGER THAN DIA OF RVS SHOWING
BORE, AND ENDS OF BOSS TO BE MACHINED BY H.W.
SKETCH FOR MODEL PLAIN: MACHINED BY CONTRACTOR

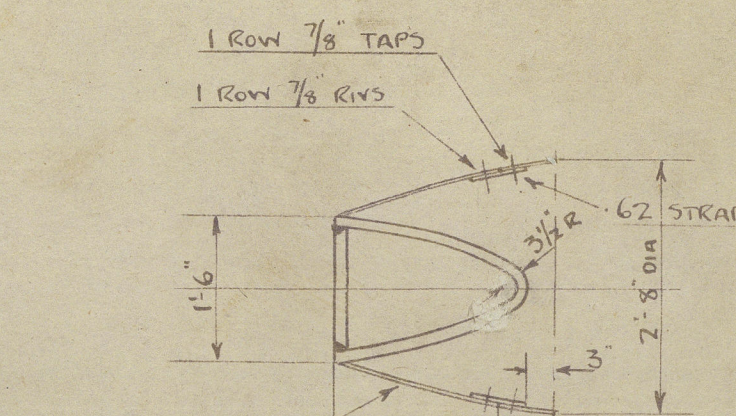


SECTION AT FR 91 (AP.
LOOKING FOR

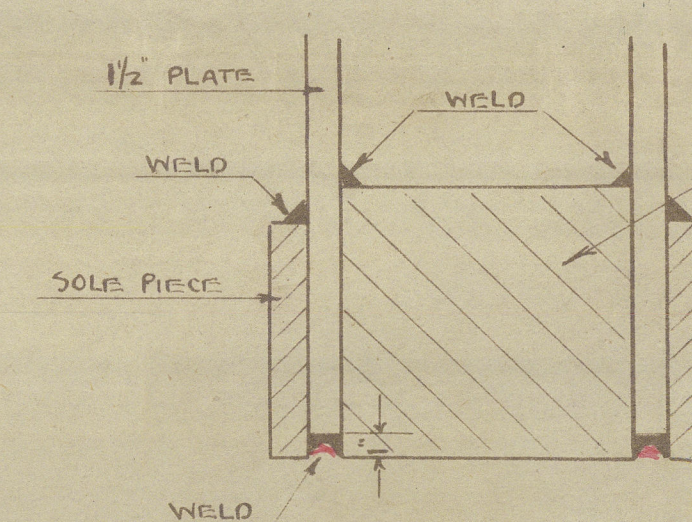


WEB 3'-0" BELOW TOP
OF S' FRAME.

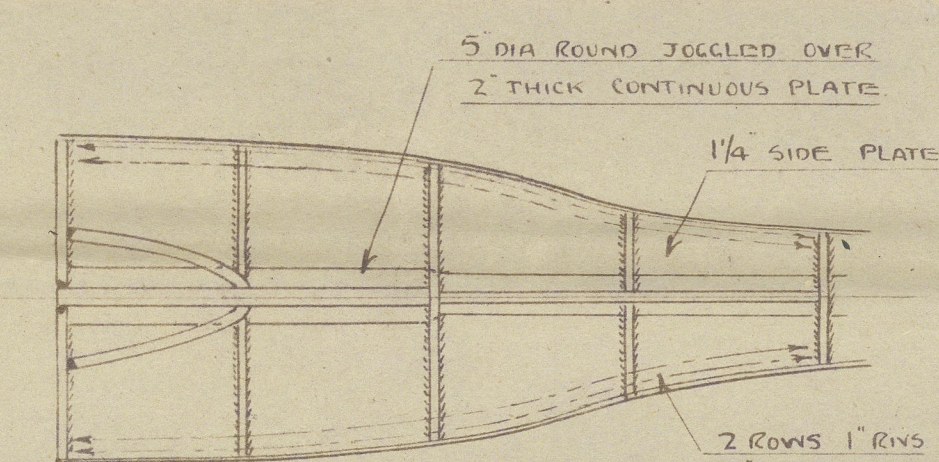
OFFSETS FOR RUDDER POST.
FIGURES GIVEN TO OUTSIDE OF PLATE



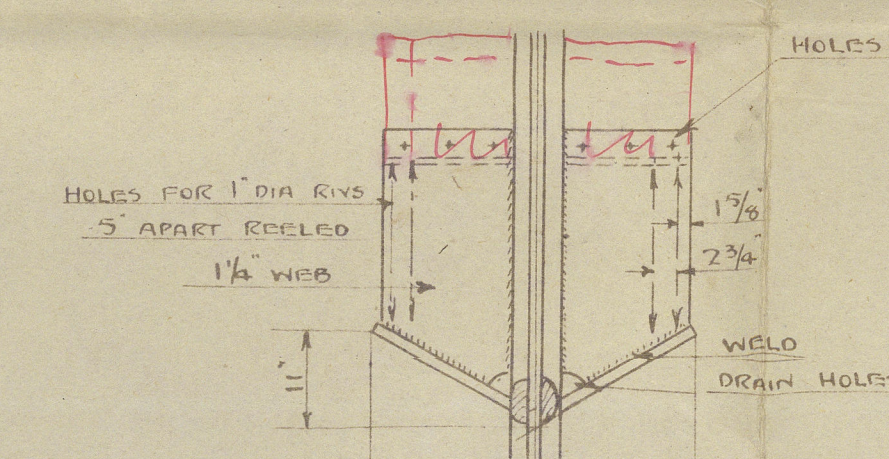
SECTION THRO' CONE PLATE



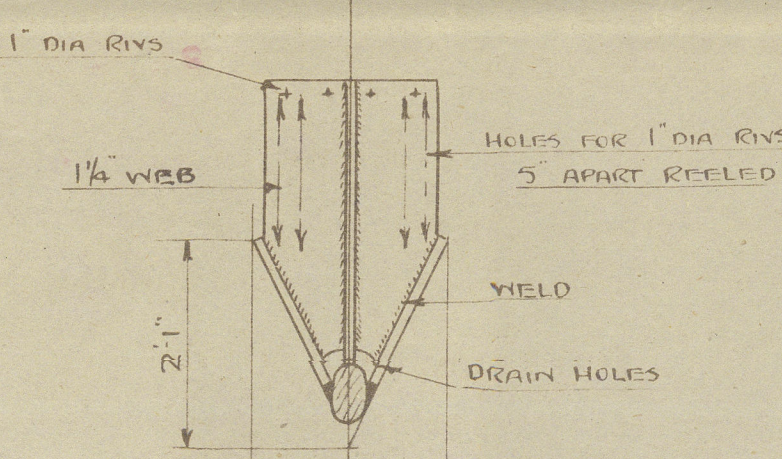
SECTION "D" D



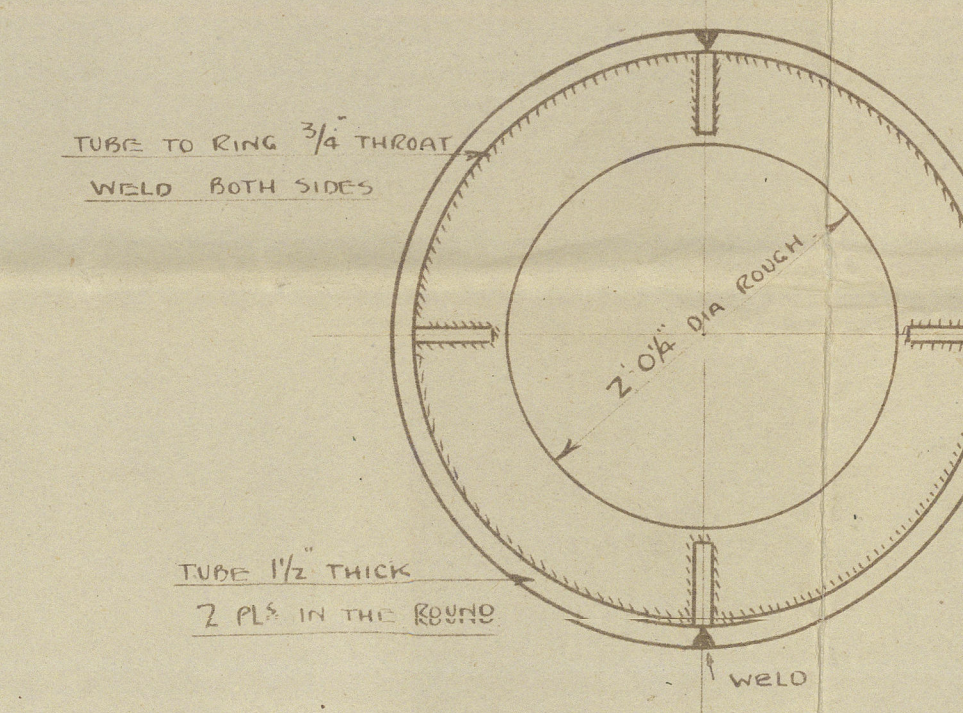
SECTION "B" B



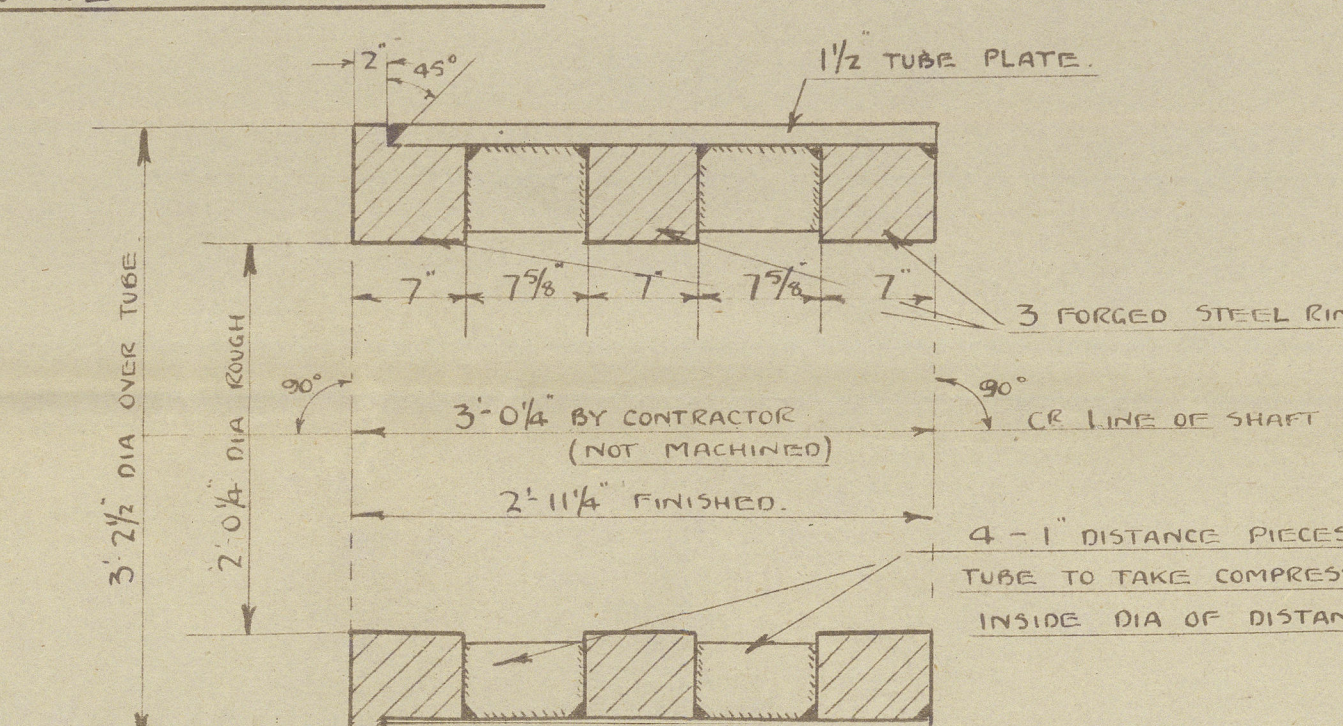
SECTION FB 90
LOOKING AFT



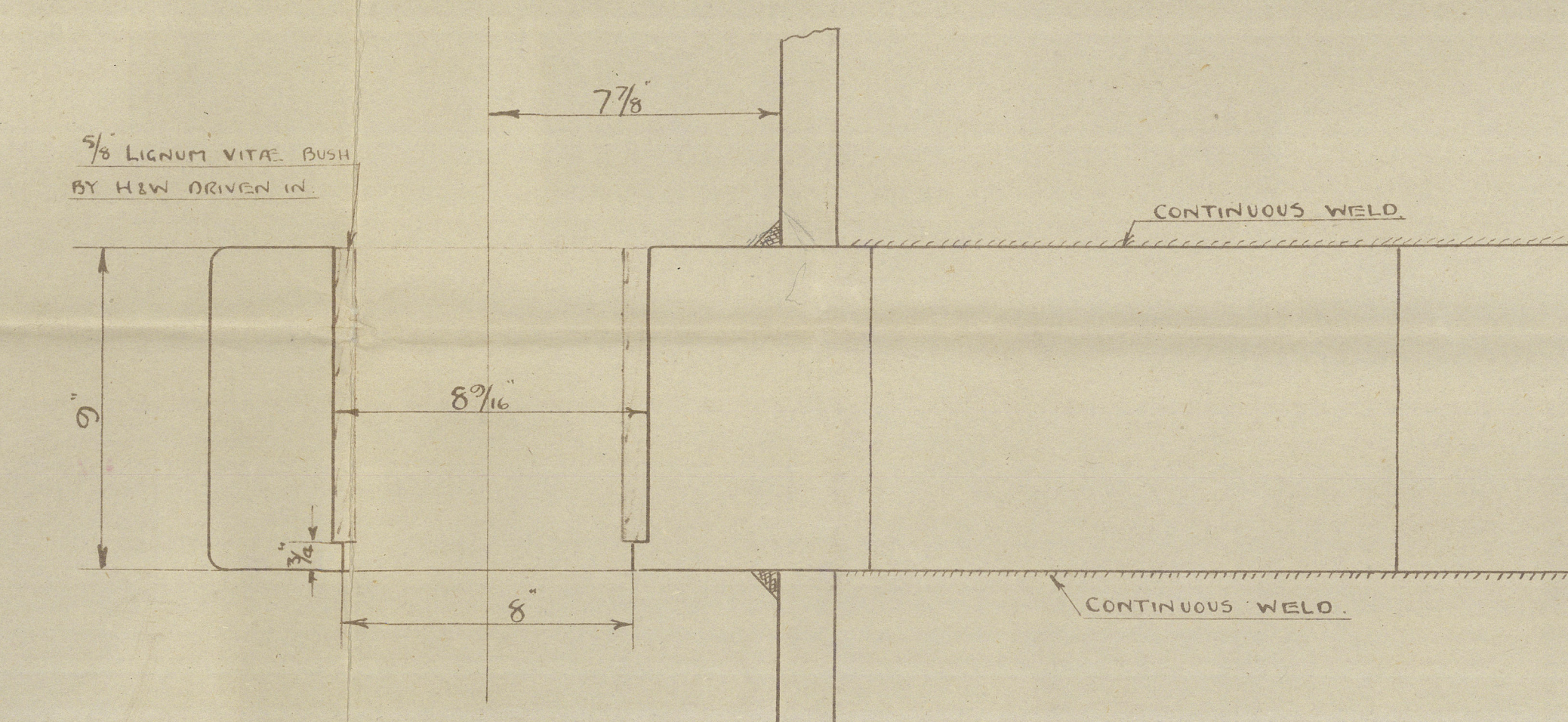
SECTION FR 88
LOOKING AFT



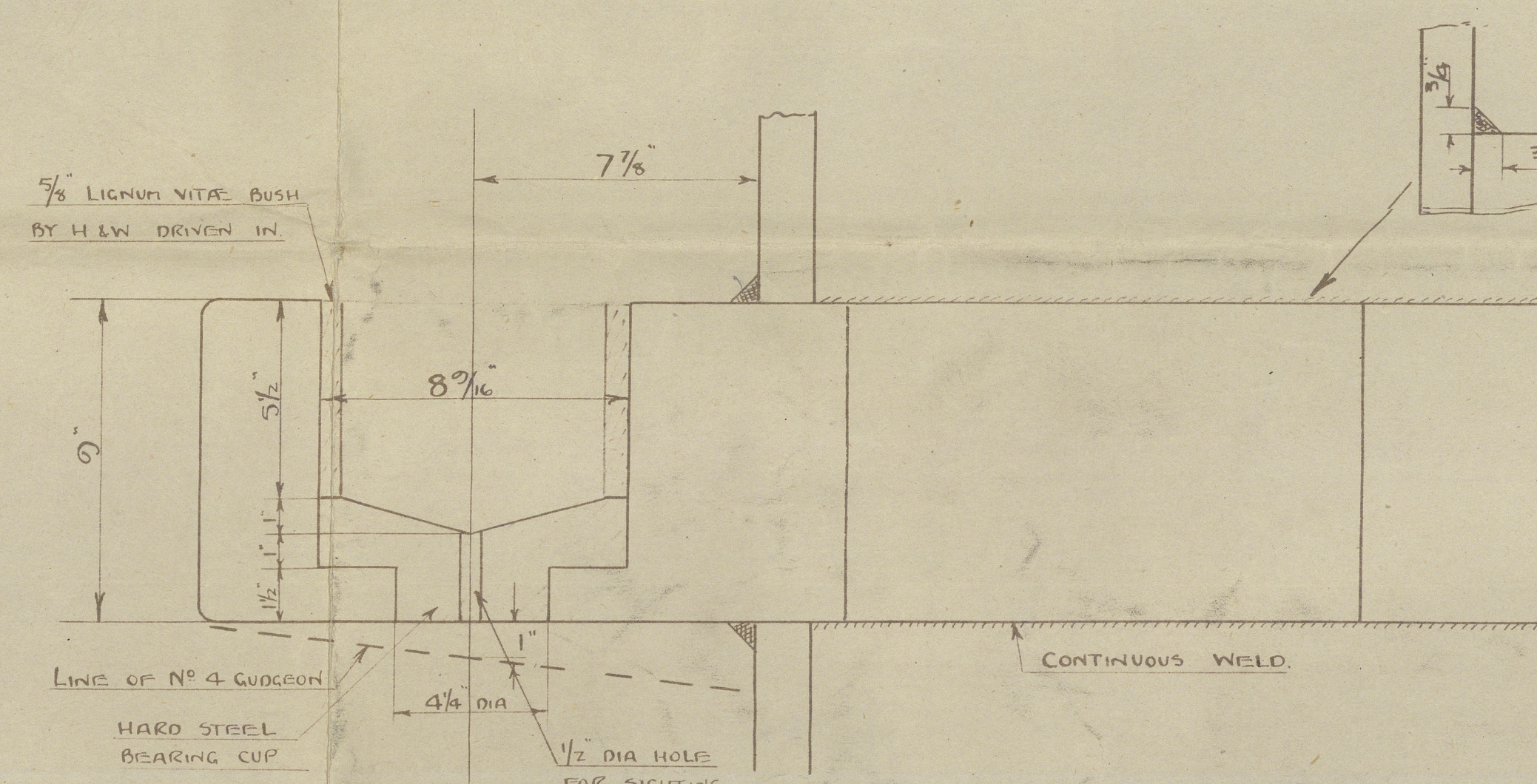
SECTION



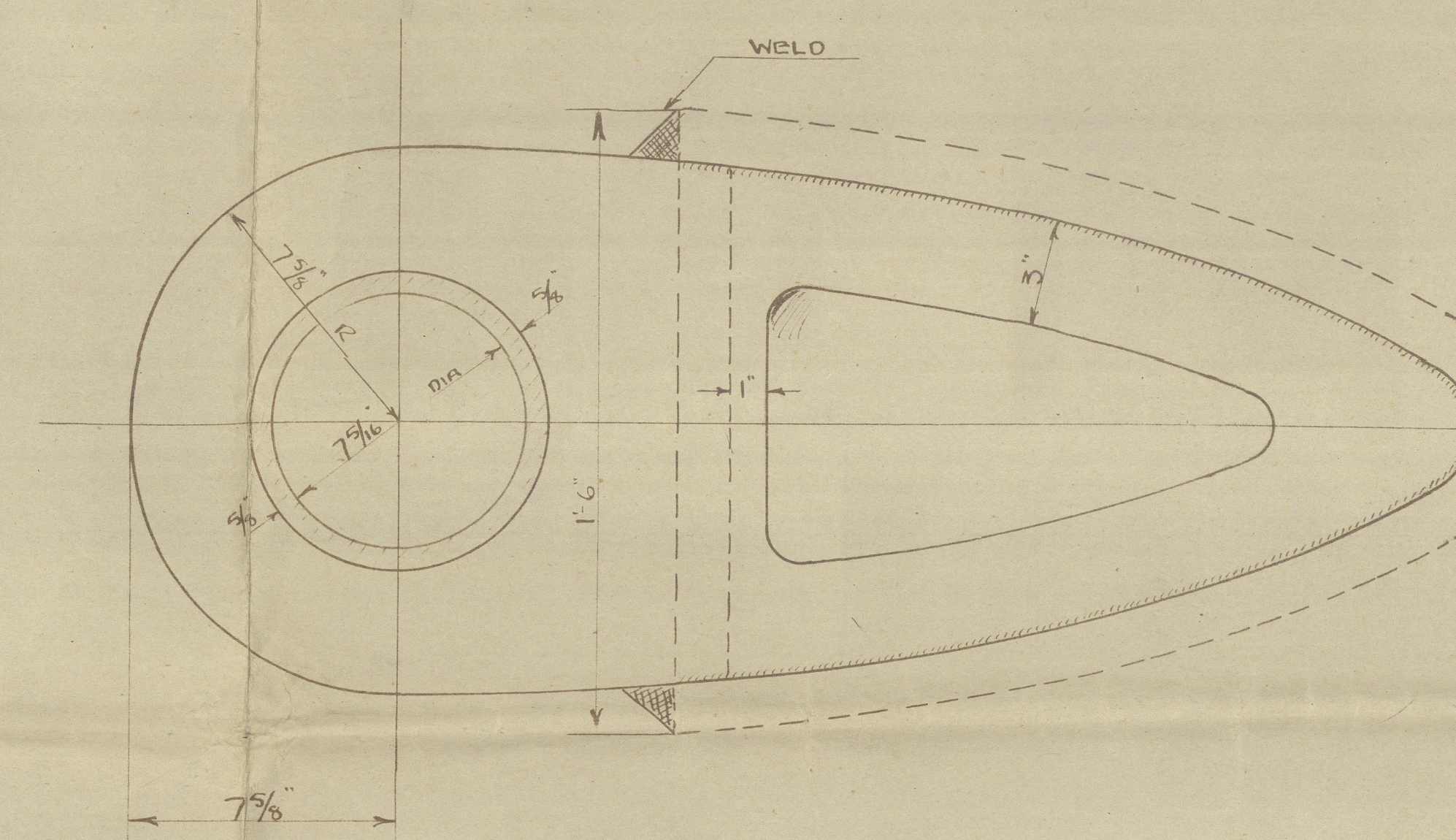
F & A SECTION



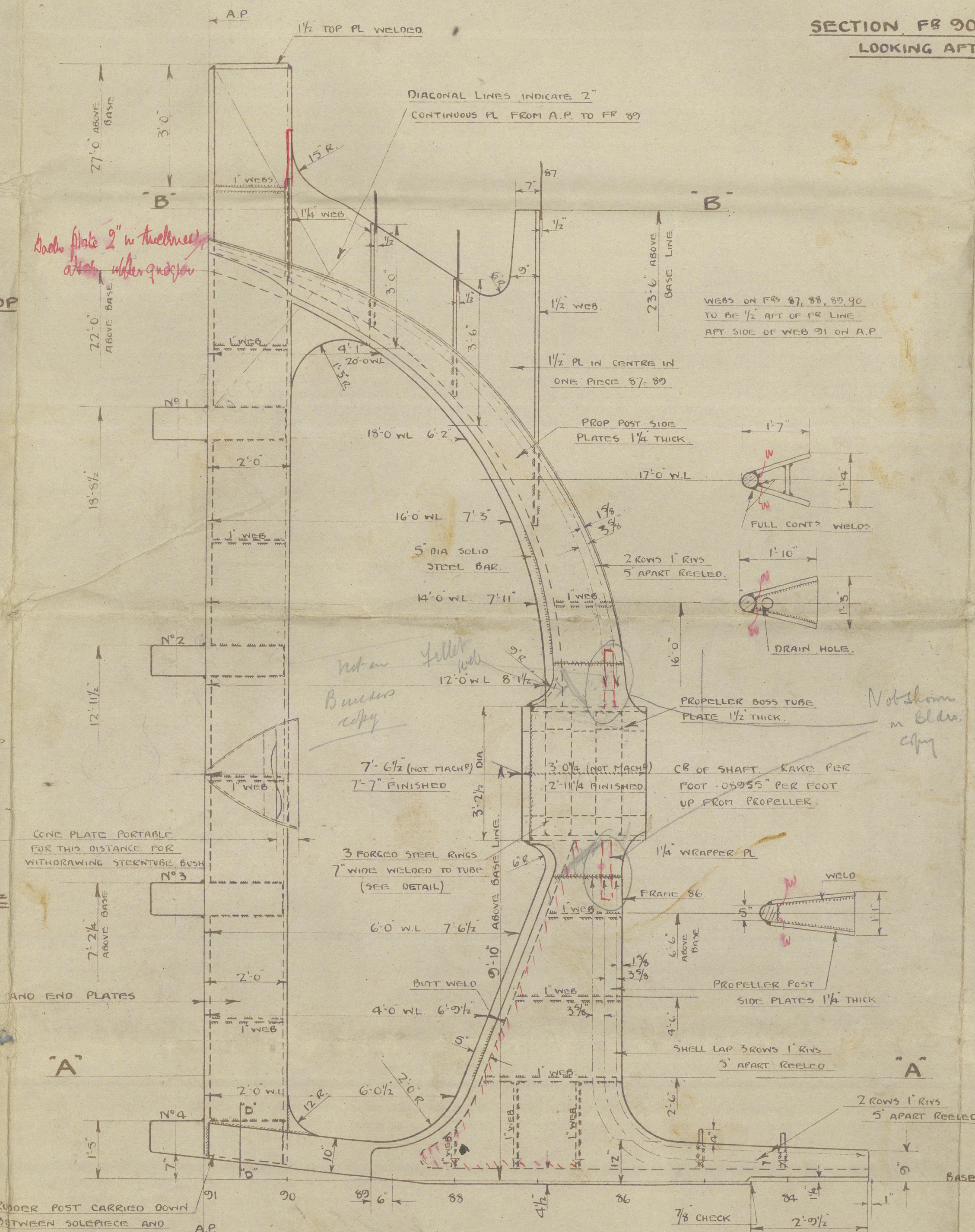
N^o. 1 GUDGEON



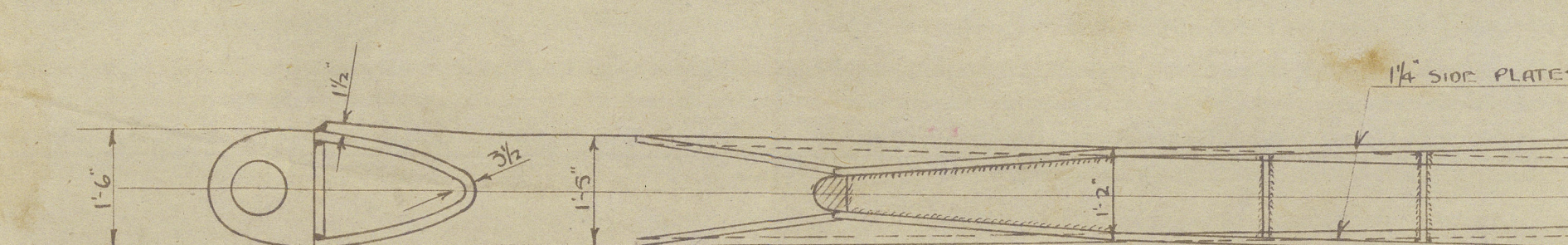
GUDGEONS Nos 2, 3 & 4



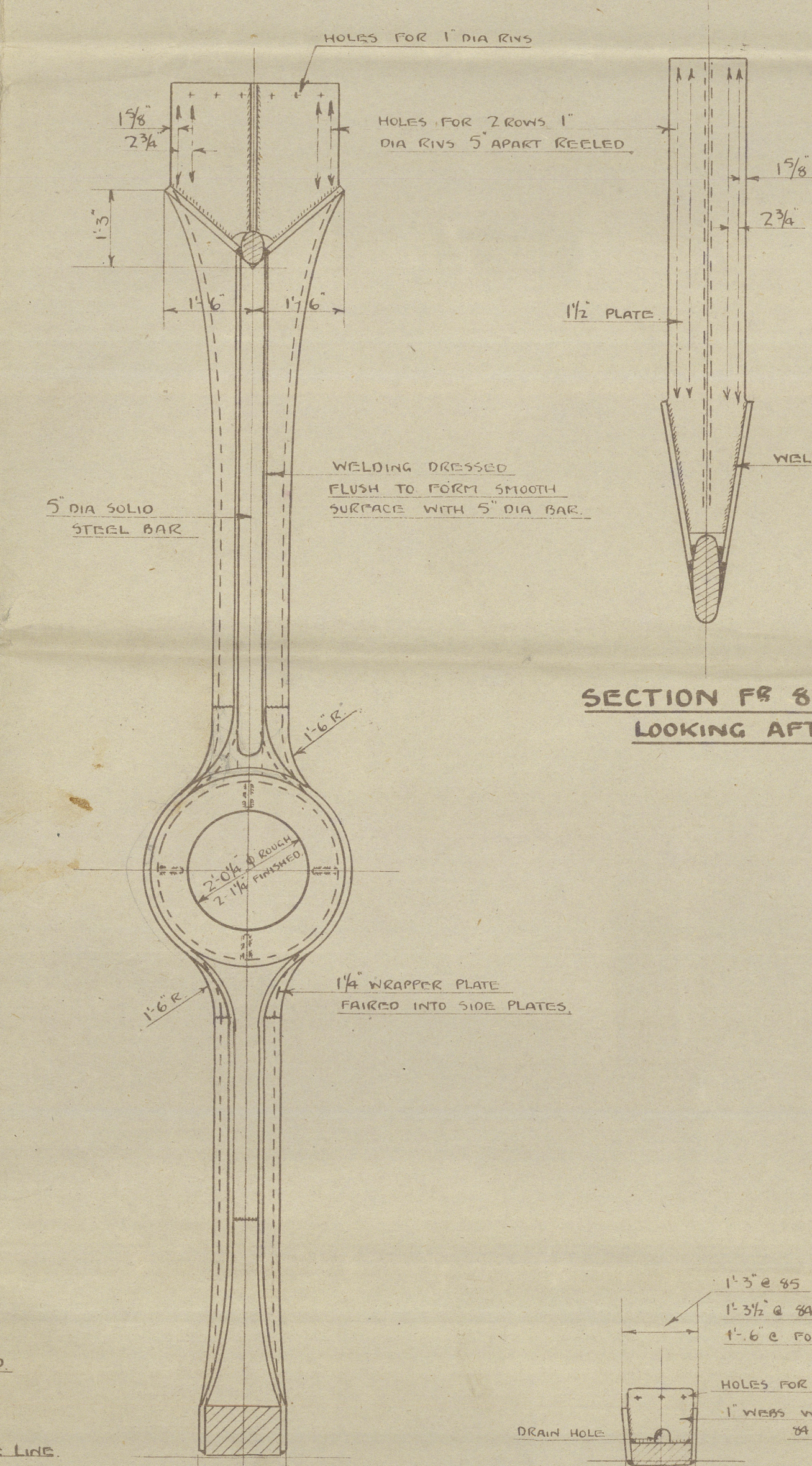
PLAN VIEW



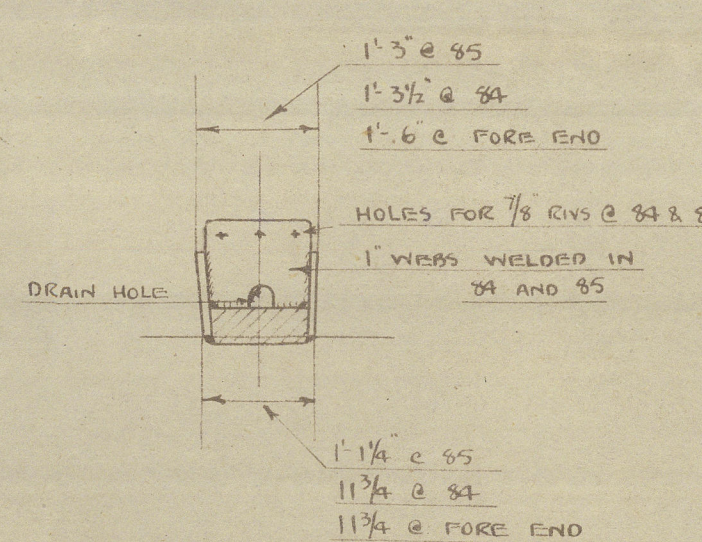
ELEVATION.



SECTION "A-A"



SECTION FR 89
LOOKING FOR



7. 6-25

12

HARLAND & WOLFF LTD.
BELFAST

No. 1242

TITLE Stern frame (amended)

DATE APPROVED 7/6/43

as fitted

Belfast Report No. 13753

Empire Saturn

No 1242

Glasgow Rpt 68749

"NAYADIS"

GLASGOW REPORT No 68850



© 2020

Lloyd's Register
Foundation

004527-004533-0107