

N^o 1369-71-3-5 SHIPS.

25 OCT 1928

STERNFRAME.

OF FORGED STEEL TO PASS BRITISH CORP. TESTS
FOR SERVICE ON THE GREAT LAKES & RIVER ST. LAWRENCE.

SCALE 1/2" = 1 FT.

DIMENSIONS GIVEN ARE TO BE CAREFULLY WORKED TO, & NOT EXCEEDED, AS WE ONLY PAY ON WEIGHTS CALCULATED TO THESE DIMENSIONS.

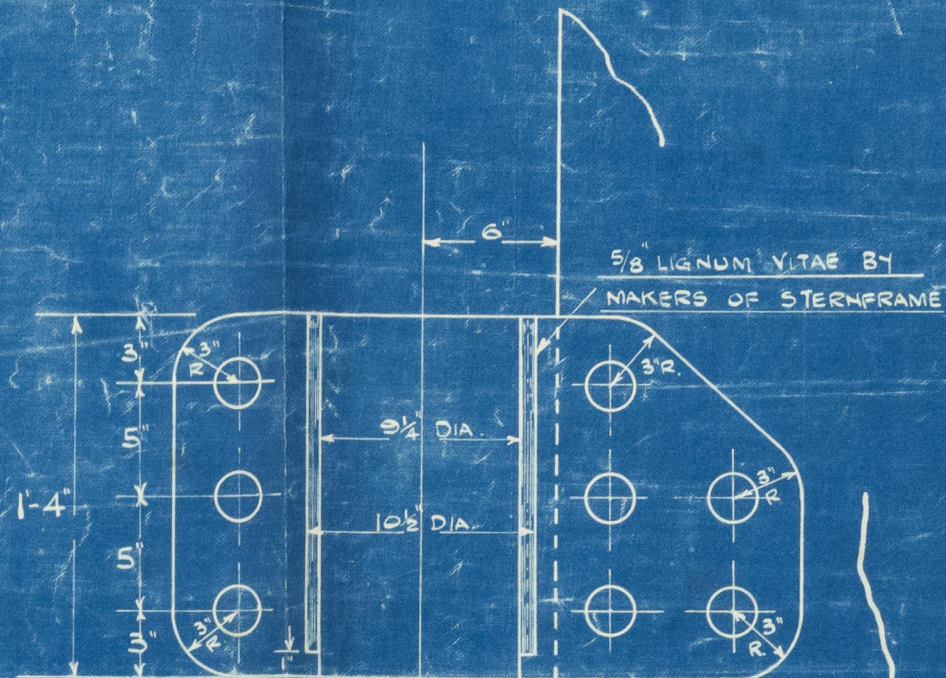
FRAME NOT TO BE PAINTED BUT TO HAVE A COAT OF OIL.

CENTRE LINE OF BEARING GUDGEON & BOTTOM GUDGEON TO BE IN A STRAIGHT LINE & SQUARE TO BASE LINE.

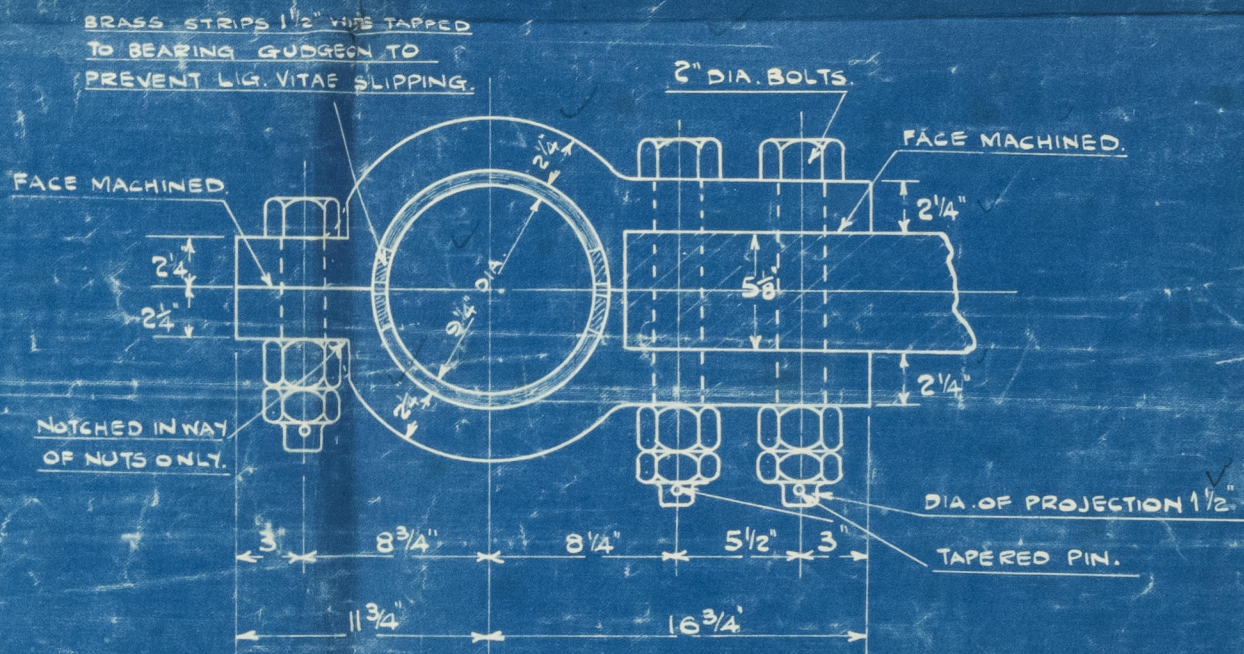
WEIGHT OF FRAME TO BE PAINTED ON BEFORE DESPATCH.

ALL DRILLING & MACHINING TO BE DONE BY MAKERS.

SPECIAL CARE TO BE TAKEN THAT HEIGHT OF CENTRE OF SHAFT ABOVE BASE LINE IS CORRECT & THICKNESS OF BOTTOM PIECE NOT EXCEEDED.

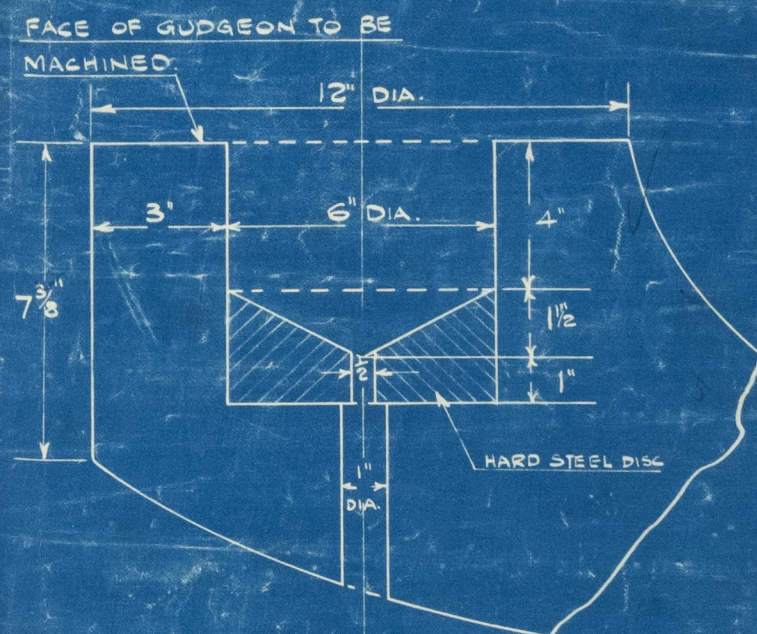


BOLTS IN GUDGEON TURNED & FITTED.



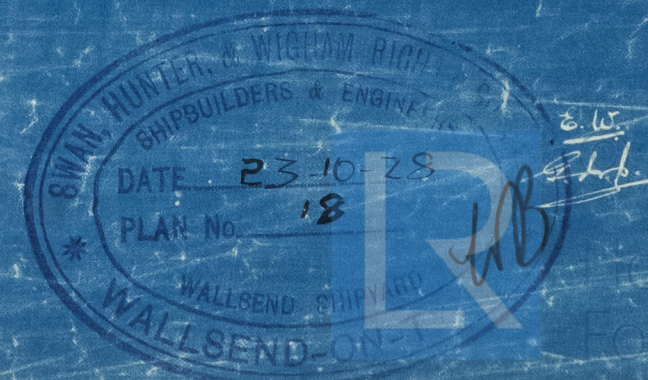
DETAIL OF BEARING GUDGEON.

SCALE 1 1/2" = 1 FT.



DETAIL OF BOTTOM GUDGEON.

SCALE 3" = 1 FT.



004512-004519-0205

7

Sternframe.

Swan Hunter & W.H.

N^{os} 1369. 1. 3. 5.

manicouagan * 2. 11. 28.
ex Empire Mother

1369. "John A. McKeller"

1371. "W. H. Houson"

1373. "Ralph Gilchrist"

1375. "Joseph R. Burke."

PLANS TRANSFERRED
TO SISTER VESSEL

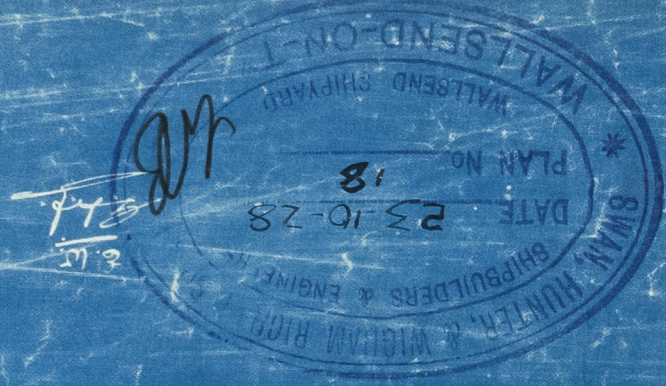
Soreldoe *



© 2020

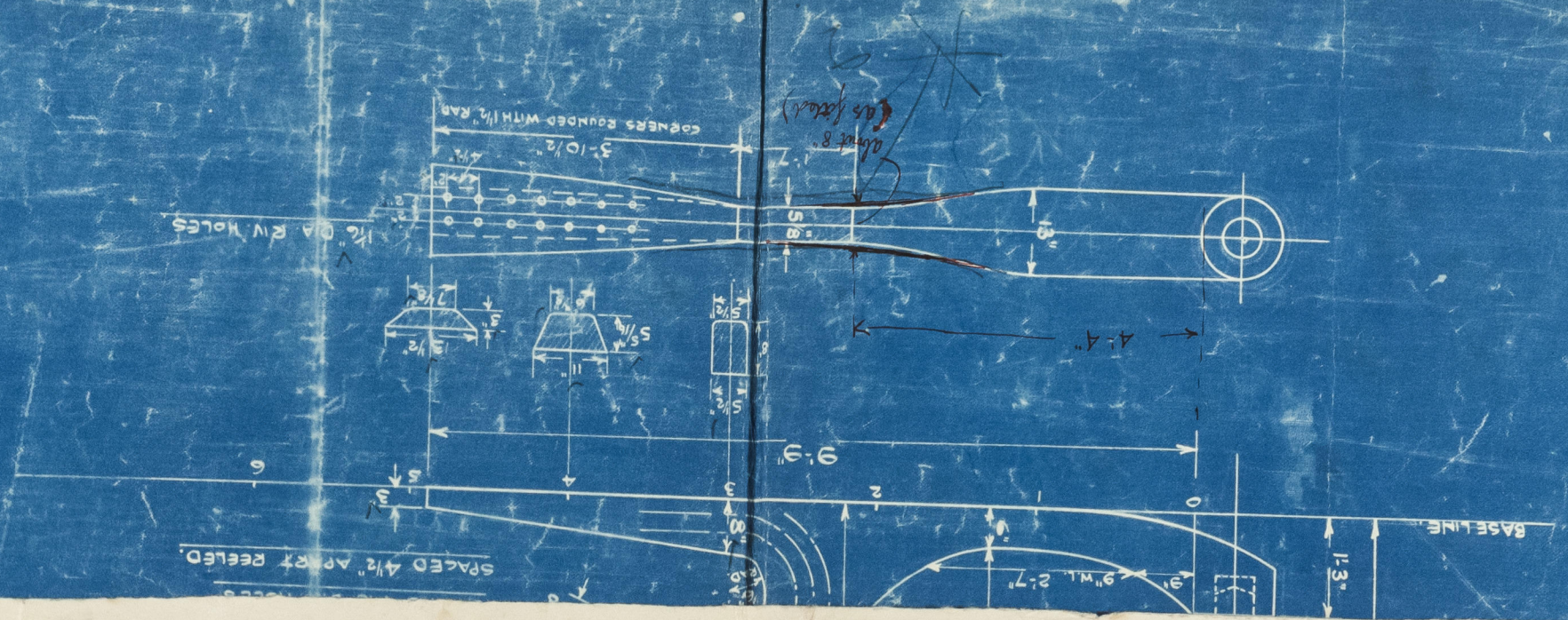
Lloyd's Register
Foundation

004512-004519-0205



DETAIL OF BOTTOM GUDGEON.
SCALE 3"=1'

004512-004519-0205



7
Sternframe

Swan Hunter 1369-1-3-5

Bay

004512-004519-0205



© 2020
Lloyd's Register
Foundation