

STREAMLINE RUDDER

JALA PRATAP.

SCALE: 1" = ONE FOOT.

DETAILS: SCALES AS INDICATED.

RUDDER STOCK BEST FORGED STEEL.

RUDDER FRAME- BEST QUALITY STEEL CASTING.

MAKERS: WILLIAM BEARD MORE & CO. LTD. GLASGOW.

DIMENSIONS: 400'-0" B.P. X 51'-6" MLD. X 30'-6" MLD. TO UPPER DECK.

TO CLASS 100.A1 AT LLOYDS SPECIAL SURVEY.

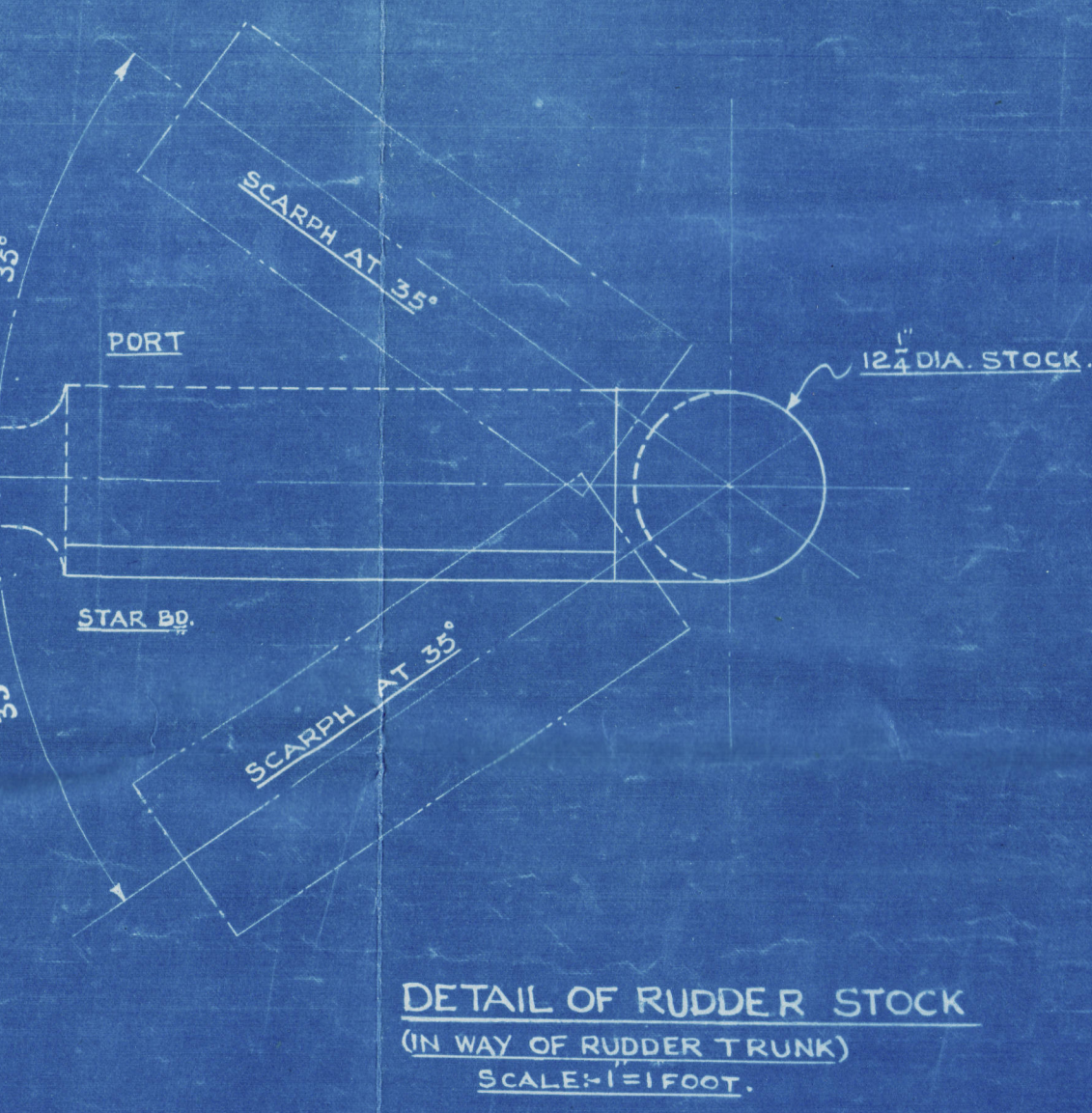
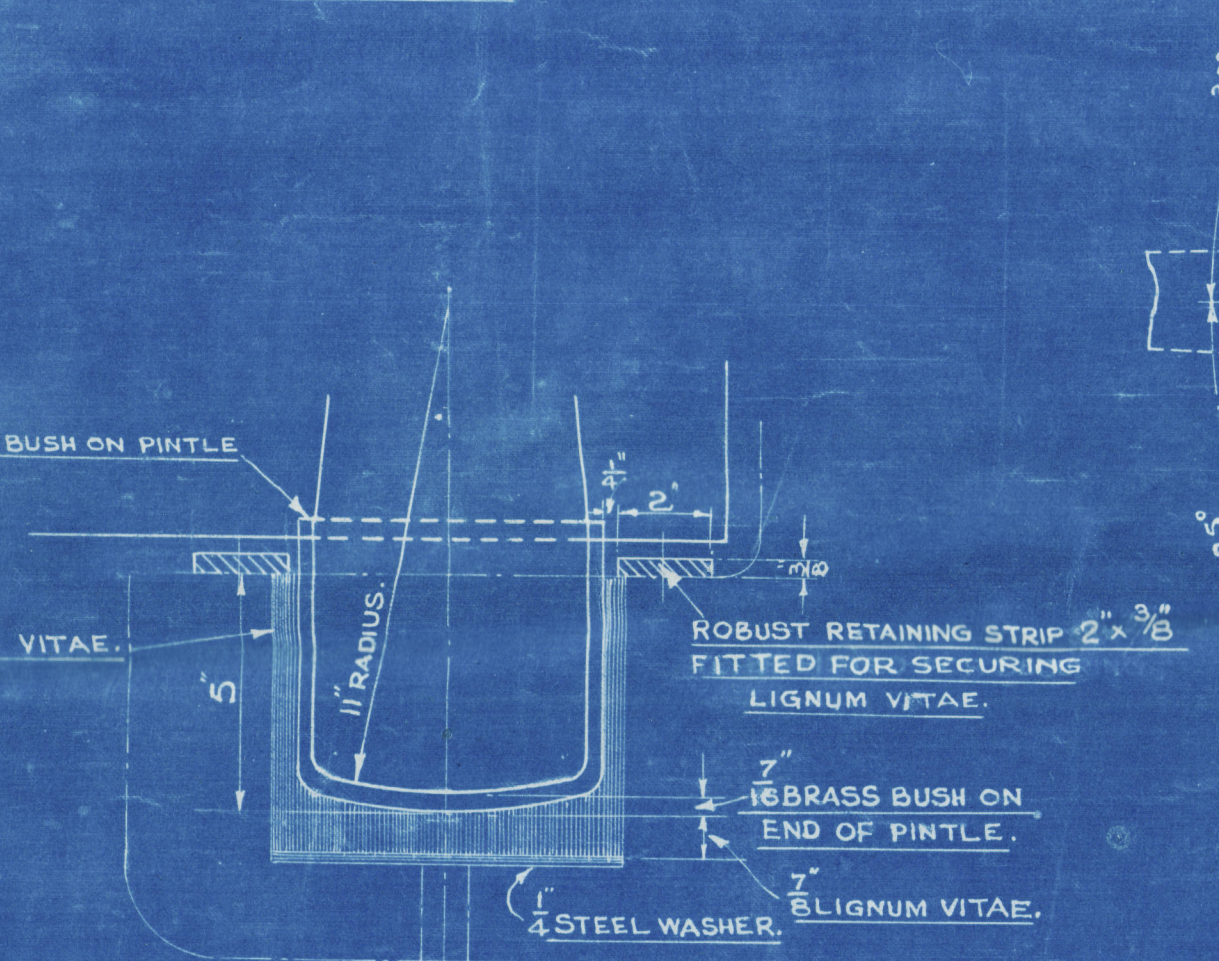
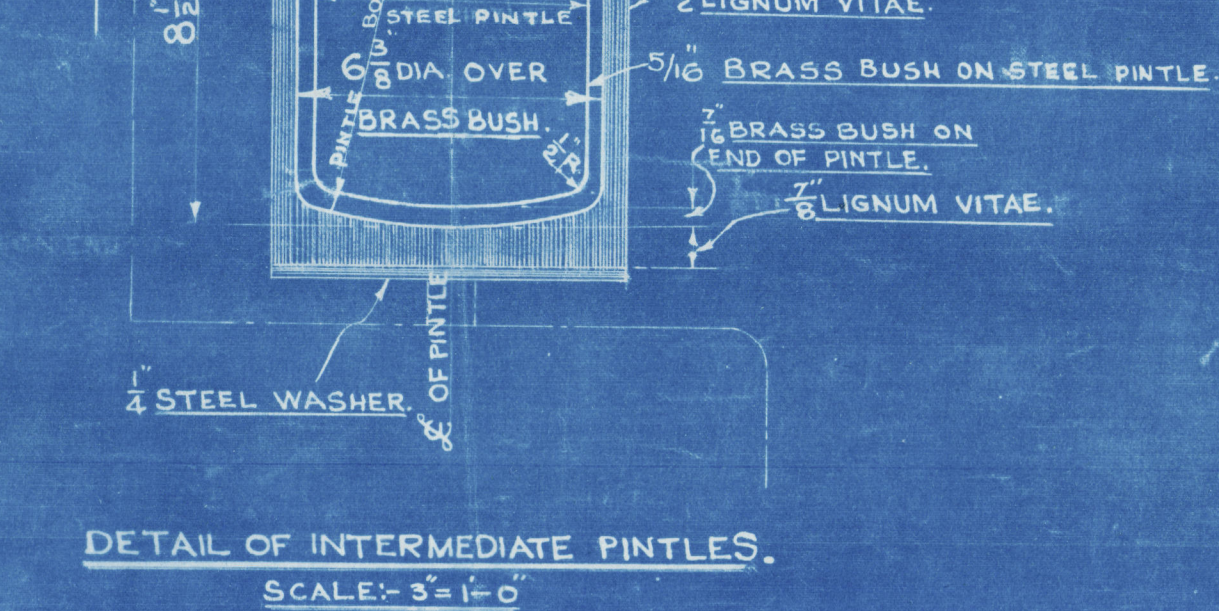
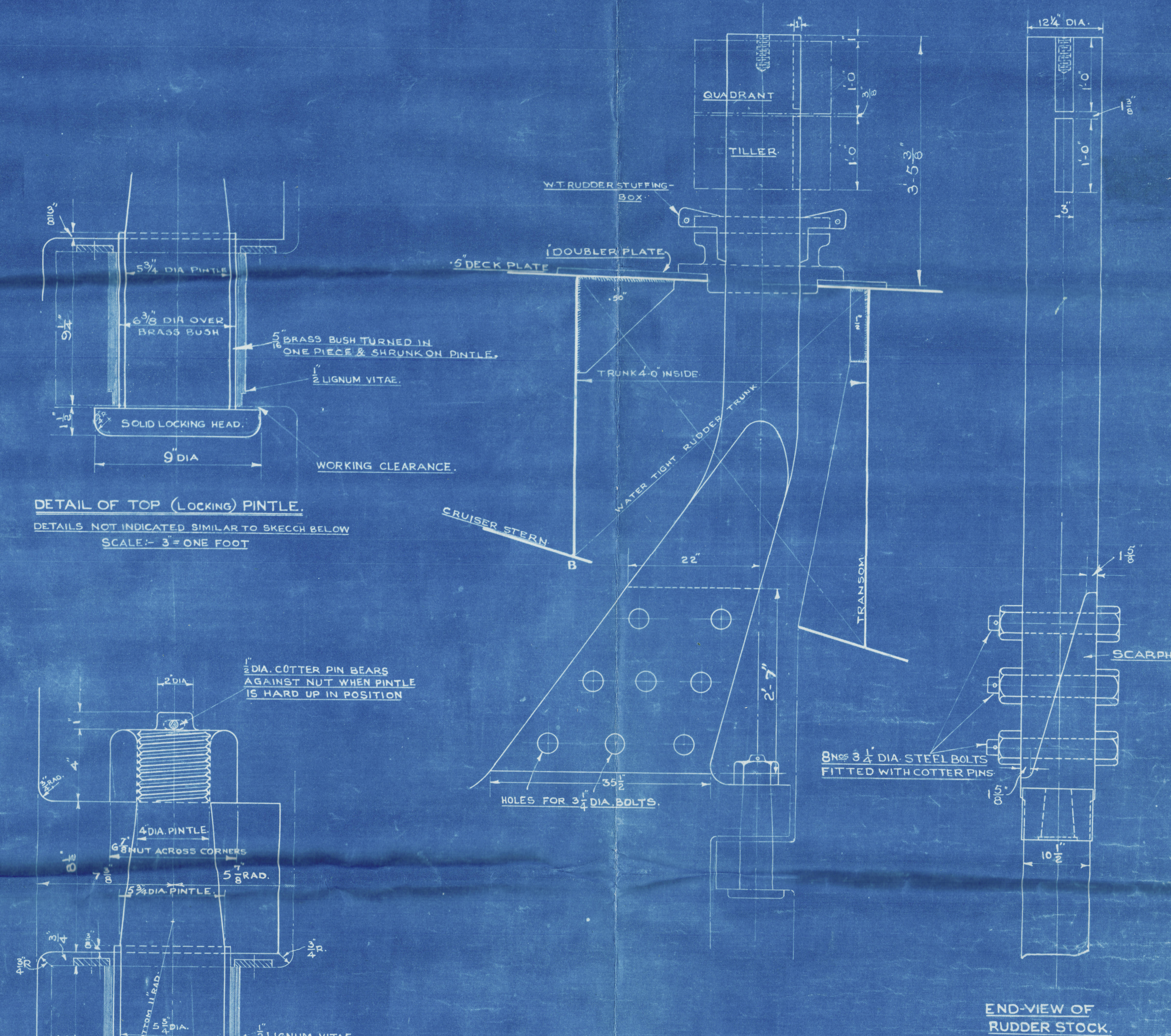
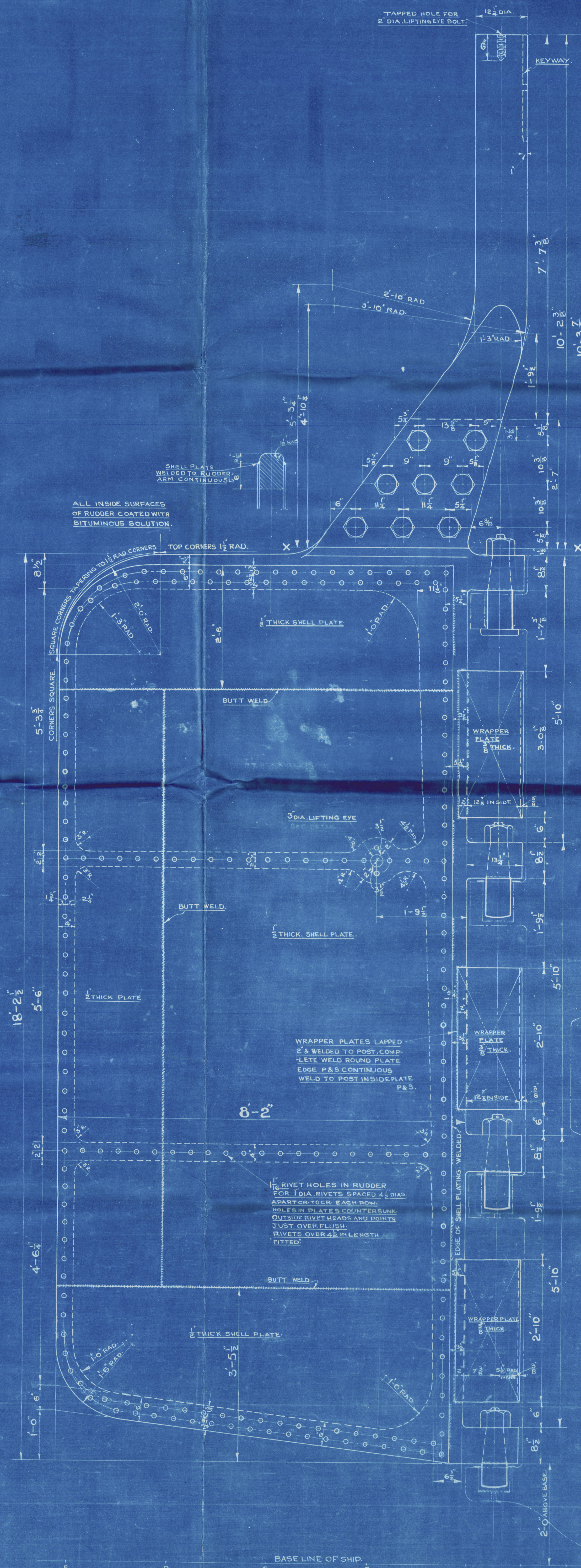
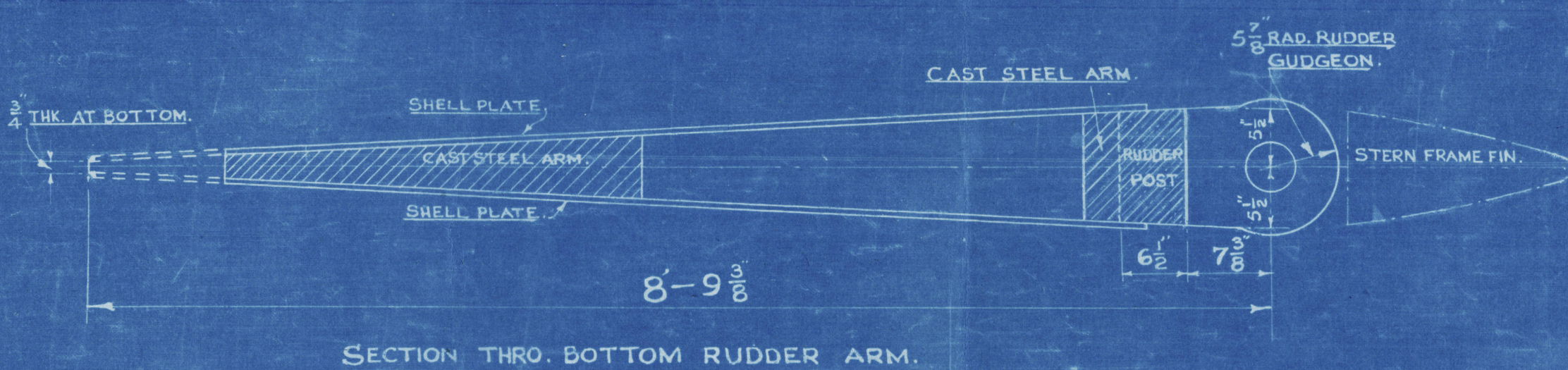
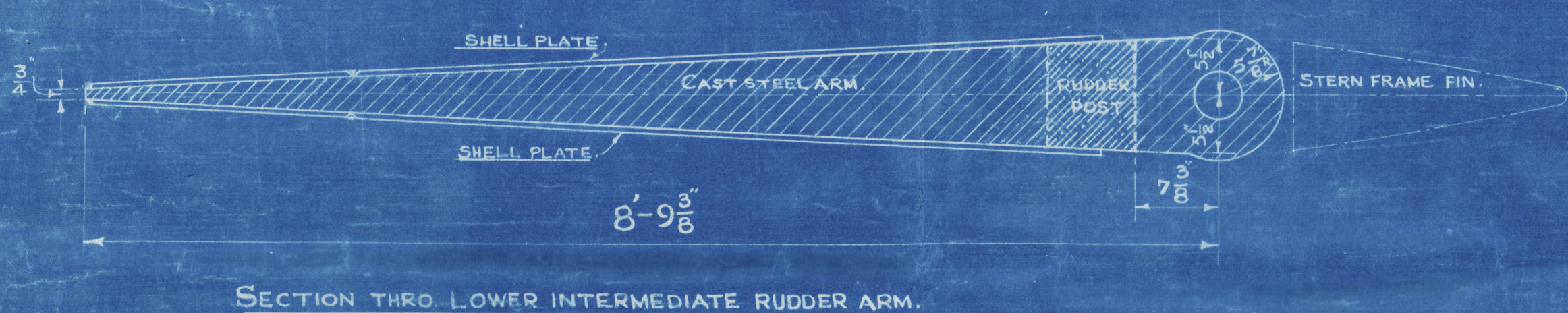
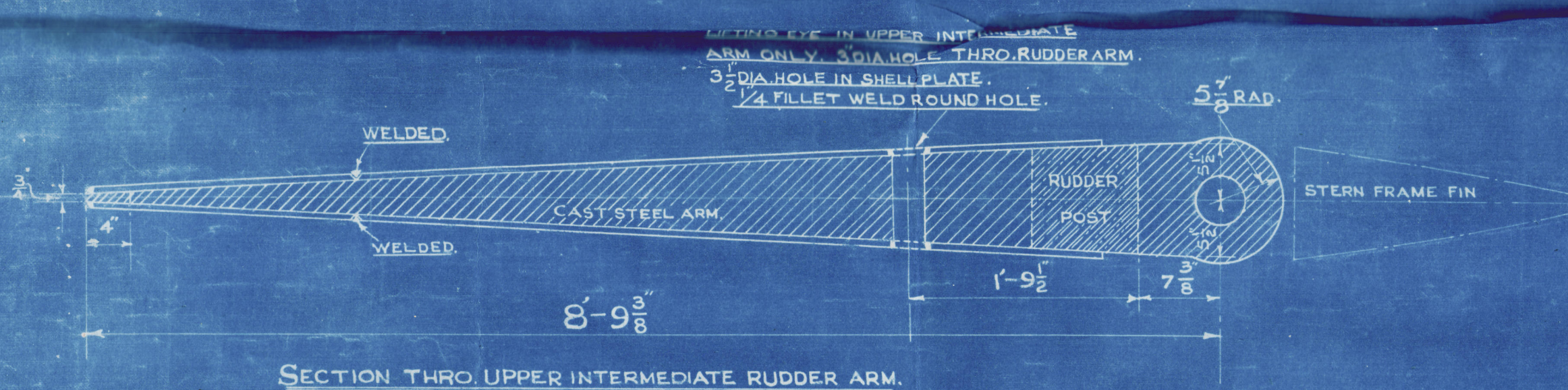
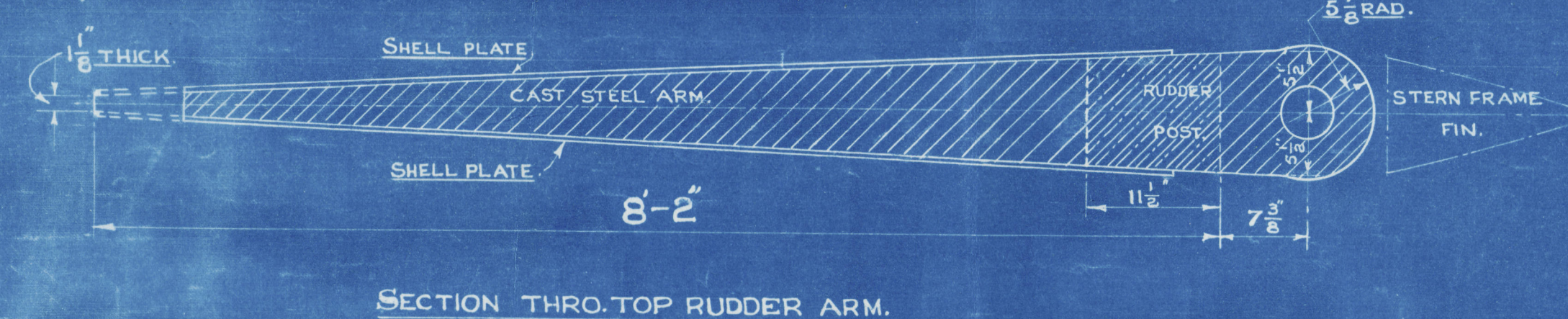
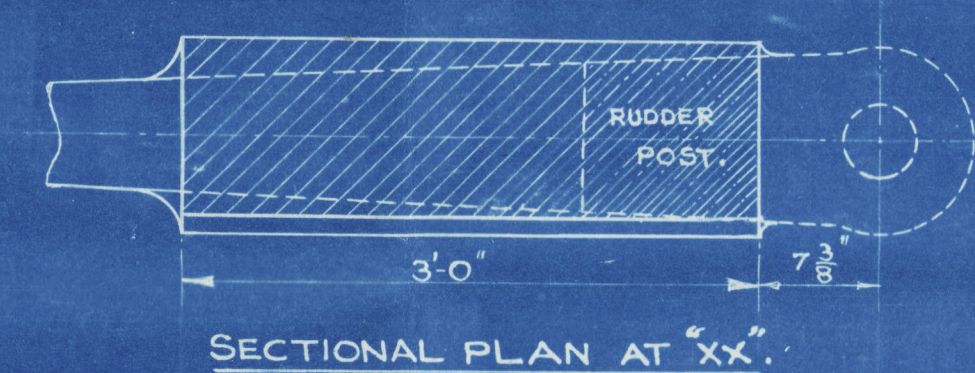
LOAD DRAFT: 25'-0"

SPEED: 10 1/2 KNOTS.

TOTAL IMMERSED AREA OF RUDDER FROM FORE SIDE OF POST = 144 SQ. FT.

CENTRE OF GRAVITY OF AREA FROM CENTRE LINE OF PINTLES = 4.69 FT.

AXD = 67.6 DIA. OF RUDDER STOCK = 12 1/4"



NOTES:
HEIGHT OF DK. MLD. ABOVE BASE AT CR. LINE OF STOCK. 27'-1"
LENGTH OF RUDDER STOCK ABOVE MLD. DK. LINE. 3'-0"
TOTAL LENGTH OF RUDDER ABOVE BASE LINE OF SHIP. 30'-1"
HEIGHT TO THE BOTTOM OF RUDDER STOCK ABOVE BASELINE OF SHIP. 20'-4"
TOTAL LENGTH OF RUDDER STOCK. 10'-2"

For The Hindustan Shipyard Ltd.
Chief Shipyard Manager



9

S. S. "JALAPRATAP" ★ M/M. 4508
YARD N° V.C. III

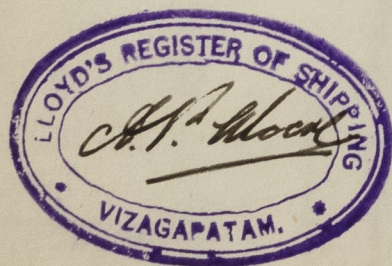
STREAMLINE RUDDER
"AS FITTED"

RECORDS DEPT.
LONDON

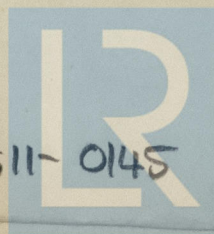
4

HINDUSTAN SHIPYARD LTD
VIZAGAPATAM
S. INDIA.

July, 1952.



004502-004511-0145



© 2020

Lloyd's Register
Foundation